

1 Role of the repeat expansion size in predicting age of onset 2 and severity in RFC1 disease

3 Riccardo Currò,^{1,2} Natalia Dominik,¹ Stefano Facchini,¹ Elisa Vegezzi,^{2,3} Roisin Sullivan,¹
4 Valentina Galassi Deforie,¹ Gorka Fernández-Eulate,⁴ Andreas Traschütz,^{5,6} Salvatore Rossi,^{7,8}
5 Matteo Garibaldi,⁹ Mariusz Kwarciany,¹⁰ Franco Taroni,¹¹ Alfredo Brusco,¹² Jean-Marc Good,¹³
6 Francesca Cavalcanti,¹⁴ Simon Hammans,¹⁵ Gianina Ravenscroft,¹⁶ Richard H Roxburgh,¹⁷
7 RFC1 repeat expansion study group, Ricardo Parolin Schneckenberg,¹ Bianca Rugginini,² Elena
8 Abati,^{1,18} Arianna Manini,^{1,18,19} Ilaria Quartesan,² Arianna Ghia,² Adolfo López de Munain,²⁰
9 Fiore Manganelli,²¹ Marina Kennerson,²² Filippo Maria Santorelli,²³ Jon Infante,²⁴ Wilson
10 Marques,²⁵ Manu Jokela,^{26,27} Sinéad M. Murphy,^{28,29} Paola Mandich,^{30,31} Gian Maria Fabrizi,³²
11 Chiara Briani,³³ David Gosal,³⁴ Davide Pareyson,¹¹ Alberto Ferrari,³ Ferran Prados,^{35,36,37} Tarek
12 Yousry,³⁸ Vikram Khurana,³⁹ Sheng-Han Kuo,⁴⁰ James Miller,⁴¹ Claire Troakes,⁴² Zane
13 Jaunmuktane,⁴³ Paola Giunti,¹ Annette Hartmann,⁴⁴ Nazli Basak,⁴⁵ Matthis Synofzik,^{5,6} Tanya
14 Stojkovic,⁴ Marios Hadjivassiliou,⁴⁶ Mary M. Reilly,¹ Henry Houlden¹ and Andrea Cortese^{1,2}

15 Abstract

16 *RFC1* disease, caused by biallelic repeat expansion in *RFC1*, is clinically heterogeneous in terms
17 of age of onset, disease progression and phenotype. We investigated the role of the repeat size in
18 influencing clinical variables in *RFC1* disease. We also assessed the presence and role of meiotic
19 and somatic instability of the repeat.

20 In this study, we identified 553 patients carrying biallelic *RFC1* expansions and measured the
21 repeat expansion size in 392 cases. Pearson's coefficient was calculated to assess the correlation
22 between the repeat size and age at disease onset. A Cox model with robust cluster standard errors
23 was adopted to describe the effect of repeat size on age at disease onset, on age at onset of each
24 individual symptoms, and on disease progression. A quasi-poisson regression model was used to
25 analyse the relationship between phenotype and repeat size. We performed multi-variate linear
26 regression to assess the association of the repeat size with the degree of cerebellar atrophy.
27 Meiotic stability was assessed by Southern blotting on first-degree relatives of 27 probands.

1 Finally, somatic instability was investigated by optical genome mapping on cerebellar and
2 frontal cortex and unaffected peripheral tissue from four post-mortem cases.

3 A larger repeat size of both smaller and larger allele was associated with an earlier age at
4 neurological onset (smaller allele HR=2.06, $p<0.001$; larger allele HR=1.53, $p<0.001$) and with a
5 higher hazard of developing disabling symptoms, such as dysarthria or dysphagia (smaller allele
6 HR=3.40, $p<0.001$; larger allele HR=1.71, $p=0.002$) or loss of independent walking (smaller
7 allele HR=2.78, $p<0.001$; larger allele HR=1.60; $p<0.001$) earlier in disease course. Patients with
8 more complex phenotypes carried larger expansions (smaller allele: complex neuropathy
9 RR=1.30, $p=0.003$; CANVAS RR=1.34, $p<0.001$; larger allele: complex neuropathy RR=1.33,
10 $p=0.008$; CANVAS RR=1.31, $p=0.009$). Furthermore, larger repeat expansions in the smaller
11 allele were associated with more pronounced cerebellar vermis atrophy (lobules I-V $\beta=-1.06$,
12 $p<0.001$; lobules VI-VII $\beta=-0.34$, $p=0.005$). The repeat did not show significant instability
13 during vertical transmission and across different tissues and brain regions.

14 *RFC1* repeat size, particularly of the smaller allele, is one of the determinants of variability in
15 *RFC1* disease and represents a key prognostic factor to predict disease onset, phenotype, and
16 severity. Assessing the repeat size is warranted as part of the diagnostic test for *RFC1* expansion.

17 18 **Author affiliations:**

19 1 Department of Neuromuscular Diseases, UCL Queen Square Institute of Neurology, London
20 WC1N 3BG, UK

21 2 Department of Brain and Behavioral Sciences, University of Pavia, 27100 Pavia, Italy

22 3 IRCCS Mondino Foundation, 27100 Pavia, Italy

23 4 Nord/Est/Ile-de-France Neuromuscular Reference Center, Institute of Myology, Pitié-
24 Salpêtrière Hospital, APHP, 75013 Paris, France

25 5 Research Division “Translational Genomics of Neurodegenerative Diseases”, Hertie-Institute
26 for Clinical Brain Research and Center of Neurology, University of Tübingen, 72076 Tübingen,
27 Germany

1 6 German Center for Neurodegenerative Diseases (DZNE), University of Tübingen, 72076
2 Tübingen, Germany

3 7 Dipartimento di Scienze dell'Invecchiamento, Neurologiche, Ortopediche e della Testa-Collo,
4 UOC Neurologia, Fondazione Policlinico Universitario A. Gemelli IRCCS, Largo A. Gemelli 8,
5 00168 Rome, Italy

6 8 Dipartimento di Neuroscienze, Università Cattolica del Sacro Cuore, Facoltà di Medicina e
7 Chirurgia, L. F. Vito 1, 00168 Rome, Italy

8 9 Neuromuscular and Rare Disease Center, Department of Neuroscience, Mental Health and
9 Sensory Organs (NESMOS), Sant'Andrea Hospital, Sapienza University of Rome, 00189 Rome,
10 Italy

11 10 Department of Adult Neurology, Medical University of Gdańsk, 80-952 Gdańsk, Poland

12 11 Fondazione IRCCS Istituto Neurologico Carlo Besta, 20126 Milan, Italy

13 12 Department of Medical Sciences, University of Torino, 10124 Turin, Italy

14 13 Division of Genetic Medicine, Lausanne University Hospital (CHUV), 1011 Lausanne,
15 Switzerland

16 14 Institute for Biomedical Research and Innovation (IRIB), Italian National Research Council
17 (CNR), 87050 Mangone, Italy

18 15 Wessex Neurological Centre, Southampton General Hospital, Southampton SO16 6YD, UK

19 16 Neurogenetic Diseases Group, Centre for Medical Research, QEII Medical Centre, University
20 of Western Australia, Nedland, WA 6009, Australia

21 17 Neurology Department, Auckland City Hospital, Auckland 1023, New Zealand and the
22 Centre for Brain Research, University of Auckland, Auckland 1142, New Zealand

23 18 Department of Pathophysiology and Transplantation, University of Milan, 20122, Milan, Italy

24 19 Department of Neurology and Laboratory of Neuroscience, IRCCS Istituto Auxologico
25 Italiano, 20145 Milan, Italy

26 20 Neurology Department, Donostia University Hospital, University of the Basque Country-
27 Osakidetza-CIBERNED-Biodonostia, 20014 Donostia-San Sebastián, Spain

1 21 Department of Neuroscience and Reproductive and Odontostomatological Sciences,
2 University of Naples Federico II, 80131 Naples, Italy

3 22 Sydney Medical School, Faculty of Medicine and Health, University of Sydney, Sydney,
4 NSW 2050, Australia

5 23 IRCCS Stella Maris Foundation, Molecular Medicine for Neurodegenerative and
6 Neuromuscular Disease Unit, 56128 Pisa, Italy

7 24 University Hospital Marqués de Valdecilla-IDIVAL, University of Cantabria, 39008
8 Santander, Spain

9 25 Department of Neurology, School of Medicine of Ribeirão Preto, University of São Paulo,
10 2650 Ribeirão Preto, Brazil

11 26 Neuromuscular Research Center, Department of Neurology, Tampere University and
12 University Hospital, 33520 Tampere, Finland

13 27 Neurocenter, Department of Neurology, Clinical Neurosciences, Turku University Hospital
14 and University of Turku, 20014 Turku, Finland

15 28 Department of Neurology, Tallaght University Hospital, D24 NR0A, Dublin, Ireland

16 29 Academic Unit of Neurology, Trinity College Dublin, D02 R590, Dublin, Ireland

17 30 Department of Neurosciences, Rehabilitation, Ophthalmology, Genetics, Maternal and Child
18 Health (DINOEMI), University of Genoa, 16132 Genoa, Italy

19 31 IRCCS Ospedale Policlinico San Martino, 16132 Genova, Italy

20 32 Department of Neurosciences, Biomedicine, and Movement Sciences, University of Verona,
21 37134 Verona, Italy

22 33 Department of Neurosciences, ERN Neuromuscular Unit, University of Padova, 35100
23 Padova, Italy

24 34 Manchester Centre for Clinical Neurosciences, Salford Royal Hospital, Northern Care
25 Alliance NHS Foundation Trust, Greater Manchester M6 8HD, UK

26 35 Centre for Medical Image Computing (CMIC), Department of Medical Physics and
27 Biomedical Engineering, University College London, WC1V 6LJ London, UK

1 36 NMR Research Unit, Institute of Neurology, University College London (UCL), WC1N 3BG
2 London, UK

3 37 e-Health Centre, Universitat Oberta de Catalunya, 08018 Barcelona, Spain

4 38 Neuroradiological Academic Unit, University College London Queen Square Institute of
5 Neurology, University College London, London WC1N 3BG, UK

6 39 Department of Neurology, Brigham and Women's Hospital and Harvard Medical School,
7 Boston, MA, 02115, USA

8 40 Department of Neurology, College of Physicians and Surgeons, Columbia University, New
9 York, NY, 10032, USA

10 41 Department of Neurology, Royal Victoria Hospitals, The Newcastle upon Tyne Hospitals
11 NHS Foundation Trust, Queen Victoria Road, NE1 4LP Newcastle, UK

12 42 London Neurodegenerative Diseases Brain Bank, Department of Basic and Clinical
13 Neuroscience, Institute of Psychiatry, Psychology and Neuroscience, King's College London,
14 SE21 8EA London, UK

15 43 Department of Clinical and Movement Neurosciences UCL Queen Square Institute of
16 Neurology, University College London, WC1N 3BG London, UK

17 44 Division of General Psychiatry, Medical University of Vienna, 1090 Vienna, Austria

18 45 Koç University, School of Medicine, Suna and İnan Kıraç Foundation, Neurodegeneration
19 Research Laboratory (NDAL), Research Center for Translational Medicine, 34010 Istanbul,
20 Turkey

21 46 Academic Department of Neurosciences, Sheffield Teaching Hospitals NHS Trust and
22 University of Sheffield, S10 2JF Sheffield, UK

23

24 Correspondence to: Andrea Cortese

25 Department of Neuromuscular Diseases, UCL Queen Square Institute of Neurology, Queen
26 Square, WC1N 3BG, London, UK

27 E-mail: andrea.cortese@ucl.ac.uk

1 **Running title:** Role of repeat expansion in *RFC1* disease

2 **Keywords:** CANVAS; RFC1; ataxia; neuropathy; repeat expansions; Southern blotting

3

4 **Introduction**

5 Repeat expansion disorders are a group of diseases caused by abnormally long microsatellites,
6 also called short tandem repeats, located either in coding or non-coding regions of the human
7 genome.¹⁻⁴ The recent developments in whole-genome sequencing methods have led to an
8 increased identification and diagnosis of diseases caused by non-coding repeat expansion.^{5,6}

9 Short tandem repeats are dynamic elements that are variably prone to further expand in offspring
10 and across different tissues from the same individual, leading to genetic anticipation and,
11 arguably, selective tissue involvement.⁷⁻¹³ Notably, repeat expansion disorders typically show a
12 correlation between the repeat length and an earlier onset and more severe disease
13 phenotype.^{10,14-22}

14 Biallelic expansion of AAGGG pentanucleotides (*TTCCC in the transcription sense*) in the
15 second intron of the replication factor complex subunit 1 (*RFC1*) was identified as the main
16 cause of cerebellar ataxia, neuropathy and vestibular areflexia syndrome (CANVAS)^{23,24} and
17 subsequent studies reported a high prevalence of biallelic AAGGG expansions in cases with
18 sporadic or familial ataxia.^{23,25-29} To date, biallelic AAGGG expansions explain the vast majority
19 of CANVAS cases, with only few cases recently reported to carry different, population-specific
20 configurations (that is, ACAGG or AAAGG₁₀₋₂₅AAGGG_{exp}AAAGG₄₋₆ in East Asia and
21 Oceania^{28,30,31}), or mono-allelic AAGGG expansions in compound heterozygous state with
22 truncating variants.³²⁻³⁵ A sensory neuropathy was recognized as the key feature in *RFC1* disease
23 spectrum and up to a third of cases diagnosed with idiopathic sensory neuropathy, with or
24 without ataxia and vestibular impairment, carry biallelic *RFC1* expansions.^{36,37} Clinical
25 heterogeneity in *RFC1* disease also involves the disease course and severity, as revealed by the
26 wide range of age at onset and disability.^{29,36,38} However, determinants of the variability of *RFC1*
27 disease are still largely unknown.

28 In this multicentre study we assessed the impact of the AAGGG repeat expansion size on the
29 disease onset, phenotype, and severity in a large cohort of patients carrying biallelic *RFC1*

1 expansions. To gain further insight into the intergenerational transmission and disease
2 pathogenesis, we also investigated the stability of the AAGGG repeat in families and within
3 different tissues of affected individuals.

4 **Materials and methods**

5 **Patients**

6 The study population consisted of a multicentre cohort of 2334 patients diagnosed with sensory
7 neuropathy, adult-onset (>25 years old) cerebellar ataxia, complex neuropathy, or CANVAS.
8 Sensory neuropathy was diagnosed according to clinical and neurophysiological criteria.^{39,40}
9 Complex neuropathy was defined by the presence of sensory neuropathy and evidence of either
10 cerebellar or vestibular involvement on examination and/or investigations. Patients with
11 combined involvement of sensory, vestibular and cerebellar systems were classified as
12 CANVAS.^{41,42} Previous studies demonstrated that sensory involvement is the hallmark of *RFC1*
13 disorder^{36,38}. Accordingly, a phenotype category was not assigned to patients whose sensory
14 examination or nerve conduction studies were not available. Furthermore, clinical phenotype was
15 defined only when at least two of the three core systems (i.e., sensory, cerebellar, and vestibular
16 system) were examined.

17

18 **Clinical features**

19 Clinical and demographic data of patients with positive genetic testing for biallelic *RFC1*
20 expansions were collected according to a standardised template which was completed by all
21 referring clinicians and which included: family history, age at onset of any neurological
22 symptom, including sensory symptoms, dysarthria, dysphagia, and oscillopsia, use of walking
23 aids, and detailed first and last available neurological examinations. To avoid a possible
24 confounder effect of population-specific non canonical configurations^{28,30,31}, we included only
25 patients of Caucasian ancestry in our analyses. The presence of chronic cough was also recorded,
26 but it was not considered to define the neurological onset of the condition. Assessment of
27 sensory system was available in 381 cases (97%), of cerebellum in 385 (98%) and of vestibular
28 system in 260 (66%). Based on the presence of symptoms and signs, patients were divided into

1 three categories: sensory neuropathy, complex neuropathy, and CANVAS. Additional features,
2 such as parkinsonism, cognitive impairment, symptomatic dysautonomia or pyramidal
3 involvement were also recorded. Dysarthria and dysphagia and loss of independent walking were
4 further analysed as markers of disease severity.

6 **Brain MRI data acquisition**

7 Structural T1 magnetic resonance images of 59 brain MRI acquired from 2004 to 2023 in a
8 clinical setting at the National Hospital for Neurology and Neurosurgery (London, UK) were
9 retrieved for volumetric analyses. 2D or 3D acquisitions were included depending on
10 availability. Twenty-seven MRI were discarded as they did not pass quality check. Brain
11 parcellations were computed using Geodesic Information Flows (GIF)⁴³ (GIF is free and
12 available as webservice in NityWeb⁴⁴) and following the Desikan-Killiany-Tourville atlas⁴⁵.
13 After parcellation, volumes were separately computed for cerebellar vermal lobules I-V, lobules
14 VI-VII, lobules VII-X, and for the total intracranial volume (TIV) in mm³.

16 **PCR-based screening of RFC1 AAGGG repeat expansion**

17 *RFC1* genetic test was performed as previously described.^{23,42} Samples with no amplifiable
18 products on flanking PCR and positive repeat-primed PCR (RP-PCR) for the AAGGG repeat
19 were considered likely positive for biallelic AAGGG *RFC1* expansions, after the exclusion of the
20 non-pathogenic AAAGG and AAAAG expansions on the other allele.

22 **Southern blotting**

23 Provided that enough DNA with good quality was available, samples were analysed by Southern
24 Blotting as previously described,²³ to confirm the presence and to measure the size of the
25 expanded alleles. The lowest size for AAGGG repeat expansions detected in this study was 6.5
26 kilobases (that is approximately 250 repeat units).

1 **Meiotic instability**

2 DNA from affected or unaffected first-degree relatives of index cases from 27 families was
3 tested by Southern Blotting. *RFC1* repeat size within families was compared to evaluate the
4 stability of the AAGGG repeat during intergenerational transmission.

6 **Somatic instability**

7 Optical genome mapping (OGM; Bionano Genomics, San Diego, USA) was performed to assess
8 the presence of post-zygotic instability in affected (vermis, cerebellar hemispheres) versus
9 unaffected tissues (frontal cortex, muscle, fibroblasts) of patients carrying biallelic *RFC1*
10 expansions. OGM has shown a good correlation with Southern Blotting in the identification and
11 sizing of large repeat expansions, including *RFC1*,⁴⁶ and a higher sensitivity in detecting the
12 presence of somatic variation.⁴⁷ Blood-derived DNA from a patient with *C9orf72* GGGGCC
13 expansion was also included as positive control for repeat instability.⁴⁸ Samples were processed
14 as previously described⁴⁷. Labelled ultra-high molecular weight (UHMW) gDNA was loaded on
15 a Saphyr chip for linearization and imaging on the Saphyr instrument (Bionano Genomics, San
16 Diego, CA, USA). The repeat expansion size was estimated as the difference between the mean
17 of the Gaussian distribution of molecules mapping to the expanded alleles and the reference
18 intermarker distance. Repeat sizes in different tissues and their standard deviations were
19 calculated and compared to detect somatic instability.

21 **Statistical analysis**

22 Data were expressed as means with standard deviations or medians with 25%-75% interquartile
23 ranges (IQRs) and min-max values depending on their distribution. Statistical significance
24 threshold was set to $p < 0.05$ and correction for multiple comparisons was applied, as appropriate.
25 We have accounted for the presence of clustered data (i.e., members of the same families)
26 adopting cluster-adjusted robust standard errors in survival models and by adding a family
27 random effect in linear regressions. To address the problem of collinearity due to the correlation
28 between the repeat size of smaller and larger allele, all the analyses were performed adopting two

1 separate models, one for each allele. First, we calculated Pearson's correlation coefficients for
2 repeat size of the smaller and larger allele and age at disease onset (cough excluded). We then
3 ran a Cox regression to evaluate the effect of repeat size on age at disease onset (cough
4 excluded) and at onset of main disease symptoms (i.e., unsteadiness, sensory symptoms,
5 dysarthria and/or dysphagia, oscillopsia, chronic cough). Time from disease onset to dysarthria
6 and /or dysphagia and to use of walking aids were considered as outcomes to predict the effect of
7 repeat size on progression to disabling disease. A Fine-Gray competing risk model was adopted
8 to adjust for competing risk (i.e., risk of the patient dying before experiencing the symptom). For
9 each regression model, regression tables with Hazard Ratios (HR), 95% confidence intervals
10 (CI), and p-value of a two-tailed Wald's test on the coefficients for a 1000-unit change in repeat
11 size were reported (*supplementary materials*). Predicted Cumulative Incidence Functions (CIF)
12 were plotted for all the symptoms of interest. A quasi-poisson regression model was used to
13 analyse the relationship between phenotype and number of repeat units. Coefficients were
14 reported as Rate Ratios (RR). The model was adjusted for sex, age at last examination and
15 disease duration, and was followed by Tukey adjusted pairwise comparisons between the three
16 phenotypes. Multivariate linear regression was performed to assess the correlation between the
17 repeat size and the degree of atrophy of cerebellar vermis, adjusted for age, disease duration, and
18 total intraparenchymal volume (TIV). Meiotic stability of the repeat was assessed by a linear
19 mixed-effects model. Pearson's coefficient was calculated to test the correlation between age of
20 neurological onset in members of the same family. All analyses were performed using STATA
21 statistical software, version 14. Plots and graphs were created with GraphPad Prism version 9.4.1
22 for Windows, GraphPad Software, San Diego, California USA, www.graphpad.com.

23

24 **Ethics**

25 The study was approved by the ethics committee and by local institutional review boards. All
26 patients gave informed consent prior to their inclusion in the study. The study complied with all
27 relevant ethical regulations.

28

1 **Results**

2 **Genetic testing for RFC1 expansions**

3 Out of 2334 patients, 556 (24%) carried biallelic AAGGG expansions at PCR screening. A
4 sufficient amount of good quality DNA to perform Southern Blotting was available in 395 cases.
5 We confirmed the biallelic expansions in 392 patients (99.3%). Sanger sequencing in the three
6 unconfirmed samples showed intermediate expansions (<100 repeats) of non-pathogenic
7 AAAAG, AAAGG or AAAGGG motifs, which were missed by the previous PCR-based
8 screening (**figure 1**).

10 **Clinical heterogeneity and disease course of RFC1 disease**

11 Demographic and clinical data from the 392 patients confirmed at Southern Blotting are
12 summarised in **table 1**. There was a similar number of males and females. Three hundred and
13 forty-seven cases were sporadic (89%), 45 cases were familiar from 19 families, including 14
14 families with 2 members, 3 with 3 members, and 2 families with 4 members affected. All cases
15 were Caucasian and most of them ($n=363$, 92%) from European descents, however multiple
16 countries were represented, including Turkey ($n=18$), Brazil ($n=1$), Iran ($n=1$), Iraq ($n=1$),
17 Algeria ($n=1$), Lebanon ($n=1$). Country of origin was not specified for 6 patients. Median age
18 at onset of neurological symptoms (cough excluded) was 54 years ($IQR=49-61$), ranging from 25
19 to 80 years. Unsteadiness was the most common complaint at disease onset, followed by sensory
20 symptoms (e.g., loss of feeling, tingling, pins-and-needles). Dysarthria and/or dysphagia,
21 suggestive of cerebellar involvement, and oscillopsia, due to bilateral vestibular impairment,
22 were less frequent in the initial stages of disease but were present in up to 51% and 27% of
23 patients at the most recent evaluation, respectively. Chronic cough was investigated in 358
24 patients (91%) and reported by 267 of them (75%). Cough was the presenting symptom in half of
25 the cases. Fifty-four per cent of patients required walking aids after a median disease duration of
26 10 years ($IQR=5-16$) and 17% needed a wheelchair after 14 years ($IQR=11-21$). Less common
27 symptoms and signs included: symptomatic dysautonomia ($n=17$), cognitive impairment ($n=7$),
28 parkinsonism ($n=2$), upper motor neuron involvement other than brisk reflexes (e.g., spasticity,
29 Babinski sign) ($n=1$).

1 Patients had a first neurological assessment at a median age of 65 years ($IQR=57-70$), after a
2 median disease duration of 7 years ($IQR=3-13$). All cases had signs and/or symptoms of sensory
3 neuropathy, when investigated. Ninety-three patients (24%) had an isolated sensory neuropathy,
4 150 (38%) a complex neuropathy with vestibular or cerebellar involvement and 122 (31%)
5 CANVAS. No patient had isolated cerebellar or vestibular disease. A phenotype was not
6 assigned in 28 cases (7%) due to incomplete clinical assessment. A second examination was
7 available in 205 cases, after a median interval of 4 years ($IQR=2-8$) from the first examination
8 and of 12 years ($IQR=8-20$) from disease onset. Additional 12% and 17% patients developed
9 signs of cerebellar and vestibular involvement, respectively. Overall, 195 patients (50%) had
10 complete CANVAS, 131 (33%) had a complex neuropathy, while 54 (14%) still showed an
11 isolated sensory neuropathy.

12 Thirty-two patients (8%) were deceased at the time of the study and in 7 cases death was related
13 to the underlying neurological disease (i.e., four due to complications of prolonged immobility or
14 falls, three due to aspiration pneumonia or cachexia in dysphagic patients). Other reported causes
15 of death were neoplasms ($n=3$), Sars-Cov2 infection ($n=2$), myocardial infarction ($n=1$), cerebral
16 haemorrhage ($n=1$), pulmonary fibrosis and respiratory failure ($n=2$). Median age at death was
17 76 years ($IQR=74-78$) for men and 76 years ($IQR=74-79$) for women, which is slightly below
18 the mean life expectancy in Europe according to WHO data (overall=80.4; females=83.2;
19 males=77.5).⁴⁹

21 **Repeat expansion size predicts onset and progression of RFC1** 22 **disease**

23 The median number of AAGGG repeats was 1042 ($IQR=844-1306$; $range=249-3885$), and
24 specifically 937 repeat units ($IQR=771-1129$; $range=249-2411$) for the smaller allele and 1195
25 repeat units ($IQR=927-1452$; $range=294-3885$) for the larger allele. Notably, we observed a
26 significant correlation ($r=0.7$, $p<0.001$) between the size of the two alleles. In 143 patients (36%)
27 the two expanded alleles appeared as a single band on Southern Blotting. This suggests that they
28 had the same or highly similar size, within the limits of detection resolution of this technique.

1 Detailed tables and figures for the statistical analyses are provided in the supplementary
2 materials. We observed an inverse correlation between age at neurological onset and repeat size
3 of the smaller allele ($r=-0.21$, $r^2=0.06$, $p<0.001$) and the larger allele ($r=-0.17$, $r^2=0.03$, $p<0.001$)
4 (**figure 2A-2B**). After adjusting for sex and clinical phenotype, the association with age at
5 neurological onset was still more significant for the smaller allele ($HR=2.06$, $p<0.001$) than for
6 the larger allele ($HR=1.53$, $p<0.001$) (**supplementary table 1s**).

7 A Fine-Gray model with robust cluster standard errors, adjusted for competing risk of death and
8 corrected for gender, was adopted to analyse the effect of repeat size of smaller and larger allele
9 on age at onset of main disease symptoms. Coefficients were calculated for 1000-repeat units
10 increase.

11 The repeat size of the smaller and larger allele resulted to be significant predictors of age at onset
12 of unsteadiness ($HR=2.68$, $p<0.001$ for the smaller allele; $HR=1.64$, $p<0.001$ for the larger allele)
13 and at onset of dysarthria and/or dysphagia ($HR=4.01$, $p<0.001$ for the smaller allele; $HR=1.93$,
14 $p<0.001$ for the larger allele). The repeat size of the smaller allele also correlated with the onset
15 of cough ($HR=1.95$, $p<0.001$), whereas the larger allele showed a borderline association with the
16 onset of sensory symptoms ($HR=1.33$, $p=0.009$ with adjusted threshold of significance $p=0.01$)
17 (**figure 2C-2F and supplementary table 2s**).

18 Patients carrying larger expansions had an increased risk to develop disabling symptoms earlier
19 in disease course compared to individuals with smaller expansions (smaller allele: $HR=3.40$,
20 $p<0.001$ for dysarthria/dysphagia and $HR=2.78$, $p<0.001$ for walking aids; larger allele:
21 $HR=1.71$, $p=0.002$ for dysarthria/dysphagia and $HR=1.60$, $p<0.001$ for walking aids) (**figures**
22 **2G-2H**). However, age at disease onset was an independent predictors of disease course, with a
23 later disease onset being associated with a shorter time to the onset of these symptoms
24 (**supplementary table 3s**).

25 Median disease duration at onset of dysarthria/dysphagia and at need for walking aids was
26 significantly shorter in patients with repeat size of the smaller allele above the 75th percentile
27 (14.5 years for dysarthria/dysphagia, 15.1 years for walking aids) compared to patients with a
28 repeat size below the 25th percentile (21.5 years for dysarthria/dysphagia, 19.2 years for walking
29 aids; $p<0.001$).

30

1 **Repeat expansion size influences disease phenotype**

2 After correcting for sex, age at last examination, and age at disease onset, the mean size of both
3 alleles was significantly higher in patients with complex neuropathy (smaller allele $RR=1.30$,
4 $p=0.003$; larger allele $RR=1.33$, $p=0.008$) or CANVAS (smaller allele $RR=1.34$, $p<0.001$; larger
5 allele $RR=1.31$, $p=0.009$) than in patients with isolated neuropathy (**supplementary table 4s**).
6 This difference was confirmed by pair-wise comparisons of repeat size between the three
7 phenotypes (**figure 3**). Conversely, we did not observe a significant difference in repeat size
8 between patients with complex neuropathy and CANVAS phenotype ($p=0.83$ smaller allele;
9 $p=0.97$ larger allele).

10

11 **Repeat expansion size correlates with the degree of cerebellar** 12 **atrophy**

13 We next tested the association between the repeat length and the degree of cerebellar vermis
14 atrophy in an internal cohort of 32 brain MRI performed at the National Hospital for Neurology
15 and Neurosurgery, London (UK). After adjusting for age at MRI, disease duration and total
16 intracranic volume, we observed a significant association (Bonferroni-adjusted significance level
17 $\alpha = 0.017$) between the repeat size of the smaller allele and the volume of cerebellar vermis
18 lobules I-V ($\beta=-1.06$, $p<0.001$) and lobules VI-VII ($\beta=-0.34$, $p=0.005$). Conversely, the volume
19 of lobules VIII-X did not correlate with the repeat size ($\beta=-0.44$, $p= 0.07$). No significant
20 association was observed between the repeat size of the larger allele and cerebellar volume
21 (**supplementary table 5s**).

22

23 **Stability of RFC1 repeat expansion across generations and tissues**

24 We evaluated 69 subjects (including 27 probands, 22 siblings, 18 offspring and 2 parents) from
25 27 families, for a total of 64 meiotic events. AAGGG repeat expansion appeared stable across
26 generations ($r^2=0.95$), with a median intra-familial variation of 25 repeats ($IQR=-17/+45$, min
27 $max=-250/+510$), and less than 10% compared to the proband's allele in 80% of meiosis (**figure**
28 **4A**). This was paralleled by the observation of a significant correlation ($r=0.66$, $p<0.001$)

1 between the age at onset of multiple affected members within the same family (n=41 patients
2 from 17 families). Expansion or contraction of the repeat across generations occurred with the
3 same frequency. Next, we compared the *RFC1* repeat size from different brain areas and
4 peripheral tissues including blood, muscles and/or fibroblasts, as available, from four patients
5 carrying biallelic *RFC1* expansions. There was limited instability of the repeat across the tissues
6 analysed, with a variation in size between -97 and +190 repeats (-5%/+7%) compared with the
7 mean size (**figure 4B**). Furthermore, mean dispersion of the repeat length was $\pm 1.7\%$ for vermis,
8 $\pm 2\%$ for cerebellar hemispheres and $\pm 2.7\%$ for frontal cortex, as opposed to a dispersion of \pm
9 36% in an individual carrying *C9orf72* expansion. Overall, there was evidence of limited somatic
10 instability across affected and unaffected bulk tissues.

11

12 Discussion

13 In this study we leveraged a large international cohort of genetically confirmed patients carrying
14 biallelic *RFC1* expansions to assess the impact of the repeat expansion size on onset, clinical
15 phenotype, and progression of *RFC1* disease.

16 Clinical data confirmed the existence of a spatial dissemination of the disease from an isolated
17 sensory neuropathy with or without chronic cough to a complex neurodegenerative disease,
18 mainly entailing clinically manifest cerebellar and vestibular involvement. Sensory neuropathy
19 was present in all patients tested, confirming the central role of sensory involvement in *RFC1*
20 disease. We showed that the repeat size in patients with isolated sensory neuropathy is smaller
21 compared to patients with multisystem involvement and similar disease duration. Therefore, the
22 repeat expansion acts as a modifier of the disease phenotype, probably due to a higher
23 susceptibility of sensory neurons to the AAGGG repeat expansion, even of small size, compared
24 to other tissues.

25 We observed a significant influence of the repeat length on the age of neurological onset. The
26 association could be better appreciated when looking at well-defined clinical symptoms, like the
27 onset of dysarthria and dysphagia, which tend to appear later in the disease course. Indeed, early
28 sensory symptoms, imbalance and chronic cough may be initially mild and progress very slowly

1 over time, so that patients struggle to date back the exact onset of the disease and often tend to
2 date the first symptoms to few years before seeking neurologic attention.

3 Most importantly, we have demonstrated a direct impact of the repeat size on the disease severity
4 and progression. Patients carrying larger expansions had a less favourable prognosis, with over
5 3-fold increased hazard of developing dysarthria or dysphagia and over 2-fold increased hazard
6 of losing independent walking per 1000-units increase in repeat size. An older age at disease
7 onset was associated with a faster progression. This has been observed in other
8 neurodegenerative disorders, including sporadic and familiar (C9orf72) ALS/ALS-FTD^{50–53}. It
9 has been postulated that the faster progression observed in late-onset ALS cases might reflect the
10 reduced neuronal reserve at baseline in older patients⁵¹. This hypothesis may also apply to *RFC1*
11 disease. Alternatively, the shorter interval between disease onset and reaching disability
12 milestones in cases with late onset may simply reflect a delayed diagnosis in individuals where
13 early neurological symptoms, including sensory symptoms or mild unsteadiness, were
14 overlooked or absent.

15 Importantly, we also showed that the repeat size of the smaller allele correlates with the degree
16 of cerebellar vermis atrophy. The correlation is significant for lobules I-V and lobules VI-VII, in
17 keeping with the selective atrophy of these lobules reported in previous neuroimaging and
18 neuropathological studies^{54,55}.

19 However, the degree of correlation might be influenced by the small sample size and by possible
20 partial volume artifacts in 2D acquisitions. Prospective studies with larger cohorts and
21 homogenous volumetric acquisitions are warranted to confirm these findings.

22 Importantly, the repeat size explained only up to 6% of the variability in age of neurological
23 disease onset, suggesting that additional environmental or genetic modifiers at the repeat locus or
24 in distant genes may be at play. In particular, the study was not designed to address the role of
25 repeat interruptions, as Southern Blotting only provides information about the repeat size.

26 The study also demonstrated that the pathogenic AAGGG repeat has limited germline and
27 somatic instability. Unlike most short tandem repeats, including the CAG repeat in Huntington
28 disease and other polyglutamine diseases, CTG in myotonic dystrophy type 1, CGG in Fragile X
29 syndrome- FXTAS, and CCGGGG in C9orf72, in which a significant instability of the expanded
30 repeat was demonstrated,^{8,48,56–59} the *RFC1* AAGGG repeat appears stable across generations,

1 with a repeat size variation, including contraction and further expansion, mostly unchanged or
2 limited to 10% of repeat size.

3 To this regard, it is interesting to note that the size of the two alleles was not independent in the
4 population tested and one third of cases had biallelic expansions of identical or highly similar
5 size. We hypothesize that this observation could be caused by a geographic distribution of
6 expanded alleles of a similar size, which is maintained over time and across generations, and we
7 speculate that the stability of the *RFC1* repeat observed in single families may extend to broader
8 areas and regions, inhabited by distantly related individuals.

9 To gain insight into the mechanisms underlying the tissue-specific involvement of *RFC1* disease,
10 we tested whether the AAGGG repeat may undergo a further somatic expansion in the affected
11 cerebellum. Although a variation of the repeat size at single cell level cannot be excluded, the
12 data obtained from bulk tissue does not support the existence of significant instability of the
13 repeat size as a determinant of the selective involvement of specific regions and neuronal
14 populations in *RFC1* disease.

15 Finally, the relative stronger effect of the size of the smaller allele may suggest the existence of
16 an underlying loss-of-function mechanism in *RFC1* disease, with progressive decrease of the
17 residual *RFC1* function sustained by the allele carrying the smaller of the two expansions. This
18 hypothesis is also supported by the recent identification of truncating variants in *RFC1* in
19 compound heterozygous state with an expansion on the second allele, leading to typical, if not
20 more severe, CANVAS phenotype.^{32,33} These observations are particularly relevant to the
21 understanding of the disease-causing mechanism of *RFC1* disease since, despite the recessive
22 mode of inheritance, the expression of *RFC1* transcript and protein seems unchanged.²³ Notably,
23 truncating variants in the coding region and a prominent effect of the smaller allele have both
24 been previously observed in Friedreich's ataxia, a recessive disorder caused by biallelic GAA
25 expansion in *FXN*, and for which, as opposed to *RFC1* disease, a reduced expression and loss of
26 function of the repeat containing gene has been clearly shown.⁶⁰

27 The main limits of this work are related to its retrospective nature. In particular, the milder
28 influence of the repeat size on some clinical features might be partly explained by the difficulty
29 of patients in dating back the onset of their earliest symptoms, as well as by a lack of
30 homogeneity in the clinical examinations and investigations performed in different centres.

1 Prospective studies in *RFC1* disease are needed to more accurately trace the disease progression
2 and fully capture the effect of repeat expansion disease.

3 In conclusion, the study contributed to better define the genotype-phenotype spectrum of *RFC1*
4 disease and highlighted the key role of the repeat size as disease modifier. Larger expansions, in
5 particular of the smaller allele, are associated with an earlier onset, a more complex phenotype,
6 and a more aggressive disease progression. Estimating the size of the repeat expansion by
7 Southern Blotting or alternative methods which became only recently available (e.g., optical
8 genome mapping) is important not only to confirm the presence of biallelic expansions, but also
9 to identify patients with higher risk to develop more complex and disabling phenotypes after a
10 shorter disease duration and to better inform them and their families on prognosis. This may also
11 impact the future design of trials as it will be key that patients in placebo/active drug groups will
12 have a comparable distribution of repeat sizes.

13

14 **Data availability**

15 With publication, de-identified data collected for the study, including individual participant data
16 and a data dictionary defining each field in the set, can be made available to interested parties on
17 reasonable request, and if in line with privacy regulations. Data can be requested at least 18
18 months after publication of this manuscript by sending an e-mail to the corresponding author.

19

20 **Acknowledgements**

21 We thank the patients and relatives who participated in this study.

22

23 **Funding**

24 This work was supported by Medical Research Council (MR/T001712/1), Fondazione Cariplo
25 (grant n. 2019-1836), the Inherited Neuropathy Consortium, and Fondazione Regionale per la
26 Ricerca Biomedica (Regione Lombardia, project ID 1751723). R. Currò was supported by the
27 European Academy of Neurology (EAN) Research Fellowship 2021. H. Houlden and M.M.

1 Reilly thank the MRC, the Wellcome Trust, the MDA, MD UK, Ataxia UK, The MSA Trust, the
2 Rosetrees Trust and the NIHR UCLH BRC for grant support. F. Taroni thanks the Fondazione
3 Regionale per la Ricerca Biomedica (CP 20/2018 (Care4NeuroRare) and the Italian Ministry of
4 Health (RC) for grant support. D. Pareyson thanks the Italian Ministry of Health (RRC) for grant
5 support. F.M. Santorelli thanks Ricerca Corrente 2022 Ministero della Salute 5X1000 for grant
6 support. M. Synofzik thanks the Deutsche Forschungsgemeinschaft (DFG, German Research
7 Foundation) and the European Joint Programme on Rare Diseases for grant support. P.F.
8 Chinnery the Medical Research Council Mitochondrial Biology Unit, the Medical Research
9 Council (MRC) International Centre for Genomic Medicine in Neuromuscular Disease, the
10 Leverhulme Trust (RPG-2018-408), the Medical Research Council, the Alzheimer's Society
11 Project, and the NIHR Cambridge Biomedical Research for grant support.

12

13 **Competing interests**

14 The authors report no competing interests.

15

16 **Appendix 1**

17 **RFC1 repeat expansion study group**

18 Inés Albájar, Catherine Ashton, Nick Beauchamp, Sarah J Beecroft, Emilia Bellone, José
19 Berciano, Petya Bogdanova-Mihaylova, Barbara Borroni, Bernard Brais, Enrico Bugiardini,
20 Catarina Campos, Aisling Carr, Liam Carroll, Francesca Castellani, Tiziana Cavallaro, Patrick F.
21 Chinnery, Silvia Colnaghi, Giuseppe Cosentino, Joana Damasio, Soma Das, Grazia Devigili,
22 Daniela Di Bella, David Dick, Alexandra Durr, Amar El-Saddig, Jennifer Faber, Moreno
23 Ferrarini, Massimiliano Filosto, Geraint Fuller, Salvatore Gallone, Chiara Gemelli, Marina
24 Grandis, John Hardy, Channa Hewamadduma, Rita Horvath, Vincent Huin, Daniele Imperiale,
25 Pablo Iruzubieta, Diego Kaski, Andrew King, Thomas Klockgether, Müge Koç, Kishore R
26 Kumar, Thierry Kuntzer, Nigel Laing, Matilde Laurà, Timothy Lavin, Peter Nigel Leigh, Lea
27 Leonardis, Michael P Lunn, Stefania Magri, Francesca Magrinelli, Maria João Malaquias,
28 Michelangelo Mancuso, Hadi Manji, Sara Massucco, John McConville, Renato P. Munhoz,

1 Sara Nagy, Alain Ndayisaba, Andrea Hilary Nemeth, Luiz Eduardo Novis, Johanna Palmio,
2 Elena Pegoraro, David Pellerin, Benedetta Perrone, Chiara Pisciotta, James Polke, Malcolm
3 Proudfoot, Laura Orsi, Aleksandar Radunovic, Nilo Riva, Aiko Robert, Riccardo Ronco, Elena
4 Rossini, Alex M Rossor, Irmak Şahbaz, Qais Sa'di, Ettore Salsano, Alessandro Salvalaggio,
5 Lucio Santoro, Elisa Sarto, Andrew Schaefer, Angelo Schenone, Carolin Scriba, Joseph Shaw,
6 Gabriella Silvestri, James Stevens, Michael Strupp, Charlotte J Sumner, Agnieszka Szymura,
7 Matteo Tagliapietra, Cristina Tassorelli, Alessandra Tessa, Marie Theaudin, Pedro Tomaselli,
8 Stefano Tozza, Arianna Tucci, Enza Maria Valente, Maurizio Versino, Richard A Walsh, Nick
9 W Wood, Way Yan Yau, Stephan Zuchner

10

11 **Supplementary material**

12 Supplementary material is available at *Brain* online.

13

14 **References**

- 15 1. Richard G-F, Kerrest A, Dujon B. Comparative Genomics and Molecular Dynamics of
16 DNA Repeats in Eukaryotes. *Microbiol Mol Biol Rev.* 2008;72(4):686-727.
- 17 2. Paulson H. Repeat Expansion Diseases. *Handb Clin Neurol.* 2018;147:105-123.
- 18 3. Orr HT, Zoghbi HY. Trinucleotide repeat disorders. *Annu Rev Neurosci.* 2007;30:575-
19 621.
- 20 4. Hannan AJ. Tandem repeats mediating genetic plasticity in health and disease. *Nat Rev*
21 *Genet.* 2018;19(5):286-298.
- 22 5. Ibañez K, Polke J, Hagelstrom RT, et al. Whole genome sequencing for the diagnosis of
23 neurological repeat expansion disorders in the UK: a retrospective diagnostic accuracy and
24 prospective clinical validation study. *Lancet Neurol.* 2022;21(3):234-245.
- 25 6. Depienne C, Mandel JL. 30 years of repeat expansion disorders: What have we learned
26 and what are the remaining challenges? *Am J Hum Genet.* 2021;108(5):764-785.

- 1 7. Rodriguez CM, Todd PK. New pathologic mechanisms in nucleotide repeat expansion
2 disorders. *Neurobiol Dis.* 2019;130:1-39.
- 3 8. Matsuura T, Fang P, Lin X, et al. Somatic and germline instability of the ATTCT repeat
4 in spinocerebellar ataxia type 10. *Am J Hum Genet.* 2004;74(6):1216-1224.
- 5 9. Khristich AN, Mirkin SM. On the wrong DNA track: Molecular mechanisms of repeat-
6 mediated genome instability. *J Biol Chem.* 2020;295(13):4134-4170.
- 7 10. Long A, Napierala JS, Polak U, et al. Somatic instability of the expanded GAA repeats in
8 Friedreich's ataxia. *PLoS One.* 2017;12(12):1-17.
- 9 11. Morales F, Couto JM, Higham CF, et al. Somatic instability of the expanded CTG triplet
10 repeat in myotonic dystrophy type 1 is a heritable quantitative trait and modifier of disease
11 severity. *Hum Mol Genet.* 2012;21(16):3558-3567.
- 12 12. Swami M, Hendricks AE, Gillis T, et al. Somatic expansion of the Huntington's disease
13 CAG repeat in the brain is associated with an earlier age of disease onset. *Hum Mol Genet.*
14 2009;18(16):3039-3047.
- 15 13. Nordin A, Akimoto C, Wuolikainen A, et al. Extensive size variability of the GGGGCC
16 expansion in C9orf72 in both neuronal and non-neuronal tissues in 18 patients with ALS or FTD.
17 *Hum Mol Genet.* 2014;24(11):3133-3142.
- 18 14. Filla A, De Michele G, Cavalcanti F, et al. The relationship between trinucleotide (GAA)
19 repeat length and clinical features in Friedreich ataxia. *Am J Hum Genet.* 1996;59(3):554-560.
- 20 15. Dürr A, Cossee M, Agid Y, et al. Clinical and genetic abnormalities in patients with
21 Friedreich's ataxia. *N Engl J Med.* 1996;335(16):1169-1175.
- 22 16. Figueroa KP, Coon H, Santos N, Velazquez L, Mederos LA, Pulst SM. Genetic analysis
23 of age at onset variation in spinocerebellar ataxia type 2. *Neurol Genet.* 2017;3(3):1-7.
- 24 17. Johansson J, Forsgren L, Sandgren O, Brice A, Holmgren G, Holmberg M. Expanded
25 CAG repeats in Swedish spinocerebellar ataxia type 7 (SCA7) patients: Effect of CAG repeat
26 length on the clinical manifestation. *Hum Mol Genet.* 1998;7(2):171-176.
- 27 18. Jodice C, Malaspina P, Persichetti F, et al. Effect of trinucleotide repeat length and
28 parental sex on phenotypic variation in spinocerebellar ataxia I. *Am J Hum Genet.*

- 1 1994;54(6):959-965.
- 2 19. Orr HT, Chung M yi, Banfi S, et al. Expansion of an unstable trinucleotide CAG repeat in
3 spinocerebellar ataxia type 1. *Nat Genet.* 1993;4(3):221-226.
- 4 20. Komure O, Sano A, Nishino N, et al. Dna analysis in hereditary dentatorubral-
5 pallidoluisian atrophy: Correlation between cag repeat length and phenotypic variation and the
6 molecular basis of anticipation. *Neurology.* 1995;45(1):143-149.
- 7 21. Brook JD, McCurrach ME, Harley HG, et al. Molecular basis of myotonic dystrophy:
8 Expansion of a trinucleotide (CTG) repeat at the 3' end of a transcript encoding a protein kinase
9 family member. *Cell.* 1992;68(4):799-808.
- 10 22. Richard P, Trollet C, Stojkovic T, et al. Correlation between PABPN1 genotype and
11 disease severity in oculopharyngeal muscular dystrophy. *Neurology.* 2017;88(4):359-365.
- 12 23. Cortese A, Simone R, Sullivan R, et al. Biallelic expansion of an intronic repeat in RFC1
13 is a common cause of late-onset ataxia. *Nat Genet.* 2019;51(4):649-658.
- 14 24. Rafehi H, Szmulewicz DJ, Bennett MF, et al. Bioinformatics-Based Identification of
15 Expanded Repeats: A Non-reference Intronic Pentamer Expansion in RFC1 Causes CANVAS.
16 *Am J Hum Genet.* 2019;105(1):151-165.
- 17 25. Fan Y, Zhang S, Yang J, et al. No biallelic intronic AAGGG repeat expansion in RFC1
18 was found in patients with late-onset ataxia and MSA. *Park Relat Disord.* 2020;73:1-2.
- 19 26. Aboud Syriani D, Wong D, Andani S, et al. Prevalence of RFC1 -mediated
20 spinocerebellar ataxia in a North American ataxia cohort . *Neurol Genet.* 2020;6(3):e440.
- 21 27. Akçimen F, Ross JP, Bourassa C V., et al. Investigation of the RFC1 Repeat Expansion
22 in a Canadian and a Brazilian Ataxia Cohort: Identification of Novel Conformations. *Front*
23 *Genet.* 2019;10:1219.
- 24 28. Tsuchiya M, Nan H, Koh K, et al. RFC1 repeat expansion in Japanese patients with late-
25 onset cerebellar ataxia. *J Hum Genet.* 2020;65(12):1143-1147
- 26 29. Träschütz A, Cortese A, Reich S, et al. Natural History, Phenotypic Spectrum, and
27 Discriminative Features of Multisystemic RFC1 Disease. *Neurology.* 2021;96(9):e1369-e1382.
- 28 30. Beecroft SJ, Cortese A, Sullivan R, et al. A Māori specific RFC1 pathogenic repeat

- 1 configuration in CANVAS, likely due to a founder allele. *Brain*. 2020;143:2673–2680.
- 2 31. Scriba CK, Beecroft SJ, Clayton JS, et al. A novel RFC1 repeat motif (ACAGG) in two
3 Asia-Pacific CANVAS families. *Brain*. 2020;143(10):2904-2910.
- 4 32. Ronco R, Perini C, Currò R, et al. Truncating Variants in RFC1 in Cerebellar Ataxia,
5 Neuropathy, and Vestibular Areflexia Syndrome. *Neurology*. 2023;100(5):e543-554 .
- 6 33. Benkirane M, Da Cunha D, Marelli C, et al. RFC1 nonsense and frameshift variants
7 cause CANVAS: clues for an unsolved pathophysiology. *Brain*. 2022;145(11):3770-3775.
- 8 34. King KA, Wegner DJ, Bucelli RC, et al. Whole-Genome and Long-Read Sequencing
9 Identify a Novel Mechanism in RFC1 Resulting in CANVAS Syndrome. *Neurol Genet*.
10 2022;8(6):e200036.
- 11 35. Arteche-López A, Avila-Fernandez A, Damian A, et al. New Cerebellar Ataxia,
12 Neuropathy, Vestibular Areflexia Syndrome cases are caused by the presence of a nonsense
13 variant in compound heterozygosity with the pathogenic repeat expansion in the RFC1 gene.
14 *Clin Genet*. 2023;103(2):236-241.
- 15 36. Currò R, Salvalaggio A, Tozza S, et al. RFC1 expansions are a common cause of
16 idiopathic sensory neuropathy. *Brain*. 2021;144(5):1542-1550.
- 17 37. Tagliapietra M, Cardellini D, Ferrarini M, et al. RFC1 AAGGG repeat expansion
18 masquerading as Chronic Idiopathic Axonal Polyneuropathy. *J Neurol*. 2021;268(11):4280-
19 4290.
- 20 38. Cortese A, Tozza S, Yau WY, et al. Cerebellar ataxia, neuropathy, vestibular areflexia
21 syndrome due to RFC1 repeat expansion. *Brain*. 2020;143(2):480-490.
- 22 39. England JD, Gronseth GS, Franklin G, et al. Distal symmetric polyneuropathy: A
23 definition for clinical research - Report of the American Academy of Neurology, the American
24 Association of Electrodiagnostic Medicine, and the American Academy of Physical Medicine
25 and Rehabilitation. *Neurology*. 2005;64(2):199-207.
- 26 40. Freeman R, Gewandter JS, Faber CG, et al. Idiopathic distal sensory polyneuropathy:
27 ACTION diagnostic criteria. *Neurology*. 2020;95(22):1005-1014.
- 28 41. Szmulewicz DJ, Roberts L, McLean CA, MacDougall HG, Michael Halmagyi G, Storey

- 1 E. Proposed diagnostic criteria for cerebellar ataxia with neuropathy and vestibular areflexia
2 syndrome (CANVAS). *Neurol Clin Pract.* 2016;6(1):61-68.
- 3 42. Cortese A, Curro' R, Vegezzi E, Yau WY, Houlden H, Reilly MM. Cerebellar ataxia,
4 neuropathy and vestibular areflexia syndrome (CANVAS): genetic and clinical aspects. *Pract*
5 *Neurol.* 2021;22(1):14–18.
- 6 43. Cardoso MJ, Modat M, Wolz R, et al. Geodesic Information Flows: Spatially-Variant
7 Graphs and Their Application to Segmentation and Fusion. *IEEE Trans Med Imaging.*
8 2015;34(9):1976-1988.
- 9 44. F. Prados Carrasco, M. J. Cardoso, Ninon Burgos, C. A. M. Wheeler-Kingshott SO.
10 NiftyWeb: web based platform for image processing on the cloud. *Sci Meet Exhib Int Soc Magn*
11 *Reson Med - ISMRM.* 2016;24th Scien.
- 12 45. Klein A, Tourville J. 101 Labeled Brain Images and a Consistent Human Cortical
13 Labeling Protocol. *Front Neurosci.* 2012;6:1-12.
- 14 46. Ghorbani F, de Boer-Bergsma J, Verschuuren-Bemelmans CC, et al. Prevalence of
15 intronic repeat expansions in RFC1 in Dutch patients with CANVAS and adult-onset ataxia. *J*
16 *Neurol.* 2022; 269(11):6086-6093.
- 17 47. Dai Y, Li P, Wang Z, et al. Single-molecule optical mapping enables quantitative
18 measurement of D4Z4 repeats in facioscapulohumeral muscular dystrophy (FSHD). *J Med*
19 *Genet.* 2020;57(2):109-120.
- 20 48. van Blitterswijk M, DeJesus-Hernandez M, Niemantsverdriet E, et al. Association
21 between repeat sizes and clinical and pathological characteristics in carriers of C9ORF72 repeat
22 expansions (Xpansize-72): A cross-sectional cohort study. *Lancet Neurol.* 2013;12(10):978-988.
- 23 49. Eurostat. Mortality and life expectancy statistics. data extracted on 25 April 2022.
- 24 50. Chiò A, Logroscino G, Hardiman O, et al. Prognostic factors in ALS: A critical review.
25 *Amyotroph Lateral Scler.* 2009;10(5-6):310-323.
- 26 51. Kjældgaard AL, Pilely K, Olsen KS, et al. Prediction of survival in amyotrophic lateral
27 sclerosis: a nationwide, Danish cohort study. *BMC Neurol.* 2021;21(1):1-8.
- 28 52. Westeneng HJ, Debray TPA, Visser AE, et al. Prognosis for patients with amyotrophic

- 1 lateral sclerosis: development and validation of a personalised prediction model. *Lancet Neurol.*
2 2018;17(5):423-433.
- 3 53. Glasmacher SA, Wong C, Pearson IE, Pal S. Survival and Prognostic Factors in C9orf72
4 Repeat Expansion Carriers: A Systematic Review and Meta-analysis. *JAMA Neurol.*
5 2020;77(3):367-376.
- 6 54. Szmulewicz DJ, McLean CA, Rodriguez ML, et al. Dorsal root ganglionopathy is
7 responsible for the sensory impairment in CANVAS. *Neurology.* 2014;82(16):1410-1415.
- 8 55. Szmulewicz DJ, Waterston JA, Macdougall HG, et al. Cerebellar ataxia, neuropathy,
9 vestibular areflexia syndrome (CANVAS): A review of the clinical features and video-
10 oculographic diagnosis. *Ann N Y Acad Sci.* 2011;1233(1):139-147.
- 11 56. Ranen NG, Stine OC, Abbott MH, et al. Anticipation and instability of IT-15 (CAG)(N)
12 repeats in parent-offspring pairs with Huntington disease. *Am J Hum Genet.* 1995;57(3):593-602.
- 13 57. Duyao M, Ambrose C, Myers R, et al. Trinucleotide repeat length instability and age of
14 onset in Huntington's disease. *Nat Genet.* 1993;4(4):387-392.
- 15 58. Fu YH, Pizzuti A, Fenwick RG, et al. An unstable triplet repeat in a gene related to
16 myotonic muscular dystrophy. *Science.* 1992;255(5049):1256-1258.
- 17 59. Nolin SL, Glicksman A, Tortora N, et al. Expansions and contractions of the FMR1 CGG
18 repeat in 5,508 transmissions of normal, intermediate, and premutation alleles. *Am J Med Genet*
19 *Part A.* 2019;179(7):1148-1156.
- 20 60. Campuzano V, Montermini L, Moltò MD, et al. Friedreich's ataxia: Autosomal recessive
21 disease caused by an intronic GAA triplet repeat expansion. *Science.* 1996;271(5254):1423-
22 1427.

24 **Figure legends**

25 **Figure 1 Flow chart describing the results of the genetic screening for RFC1 expansions.**
26 PCR= polymerase chain reaction; RP-PCR= repeat-primed polymerase chain reaction, kb=
27 kilobases. aThree cases were subsequently excluded from the analysis because Southern Blotting
28 did not confirm the presence of biallelic expansions.

1 **Figure 2 Relationship between repeat size and main symptoms of RFC1 disease. (A and B)**
2 The scatter plots illustrate the strength and the direction of the correlation between the age at
3 neurological onset of the disease (y axis) and the repeat size of the smaller or the larger allele (x
4 axis). (C–F) The curves illustrate the predicted cumulative incidence function (CIF) for chronic
5 cough, unsteadiness, dysarthria/dysphagia, and oscillopsia plotted against age at onset. (G and
6 H) Predicted CIF for dysarthria/dysphagia and need of walking aid plotted against disease
7 duration. Curves are stratified for values of smaller allele repeat size equal to the minimum
8 value, 25th, 50th, 75th percentiles and maximum value of distribution.

9
10 **Figure 3 Relationship between phenotype and repeat length.** The box plots compare the
11 repeat size for the smaller (left panel) and larger (right panel) alleles in patients with different
12 phenotypes at last examination. P-values were calculated adopting Tukey's correction. SN=
13 sensory neuropathy; CN= complex neuropathy.

14
15 **Figure 4 Limited meiotic and somatic instability of the AAGGG repeat expansion. (A)** On
16 the left, the picture illustrates a representative example of Southern Blotting including probands
17 (asterisks) and unaffected relatives from six families (F1-F6). On the right, the correlation plot
18 shows the relationship of the repeat size within members of the same family. Each dot
19 corresponds to a meiotic event. (B) On the left, the bar chart shows the dispersion of the repeat
20 size among different brain areas and peripheral tissues of four patients with RFC1 biallelic
21 expansions and in one patient with C9orf72 expansion. Mean intermarker distance (expressed in
22 base pairs) and SDs are shown. In patient 1 and patient 3, repeat size from peripheral tissue was
23 measured by Southern blotting. On the right, distribution of DNA molecules measured by
24 genome optical mapping (Bionano Genomics) in different tissues of a patient with a biallelic
25 expansion in RFC1 and in blood-derived DNA of a patient with C9orf72 expansion. The size of
26 DNA molecules mapping on RFC1 or C9orf72 locus is expressed in base pairs.

27

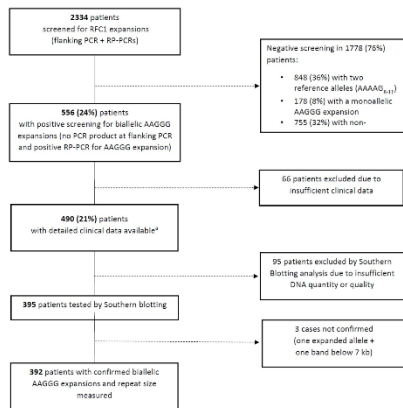


Figure 1
58x57 mm (x DPI)

1
2
3
4

ACCEPTED MANUSCRIPT

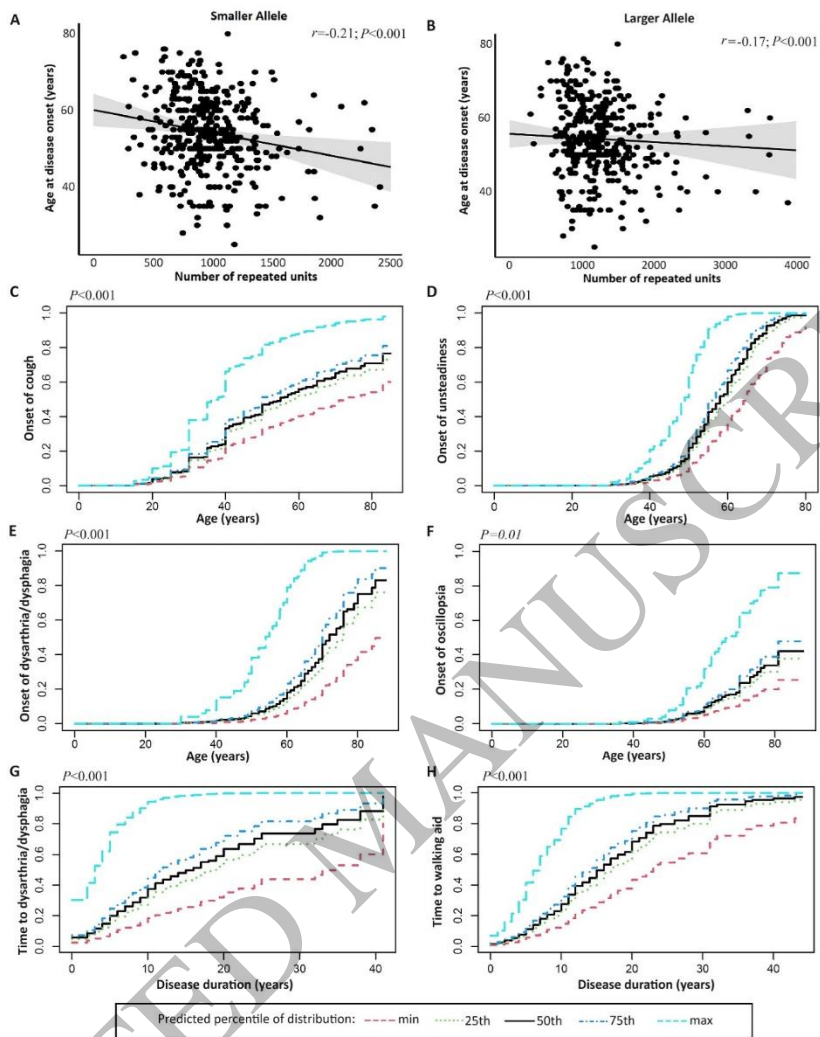


Figure 2
116x141 mm (x DPI)

1
2
3

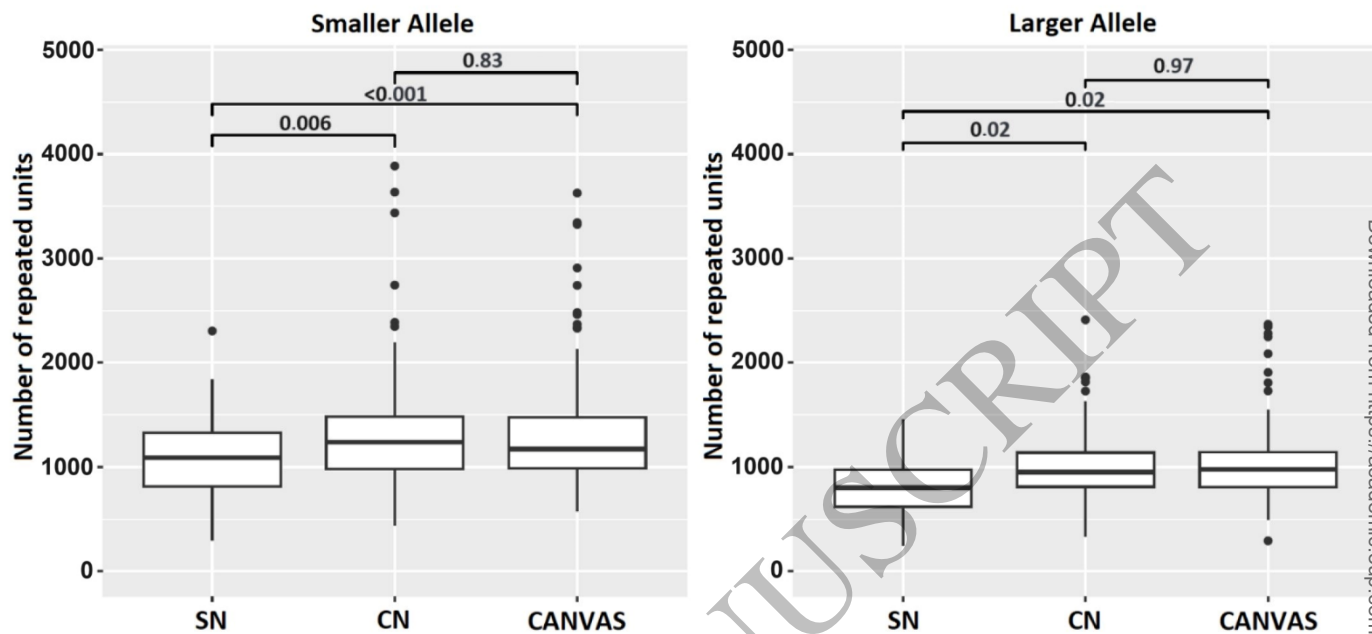


Figure 3
187x89 mm (x DPI)

1
2
3

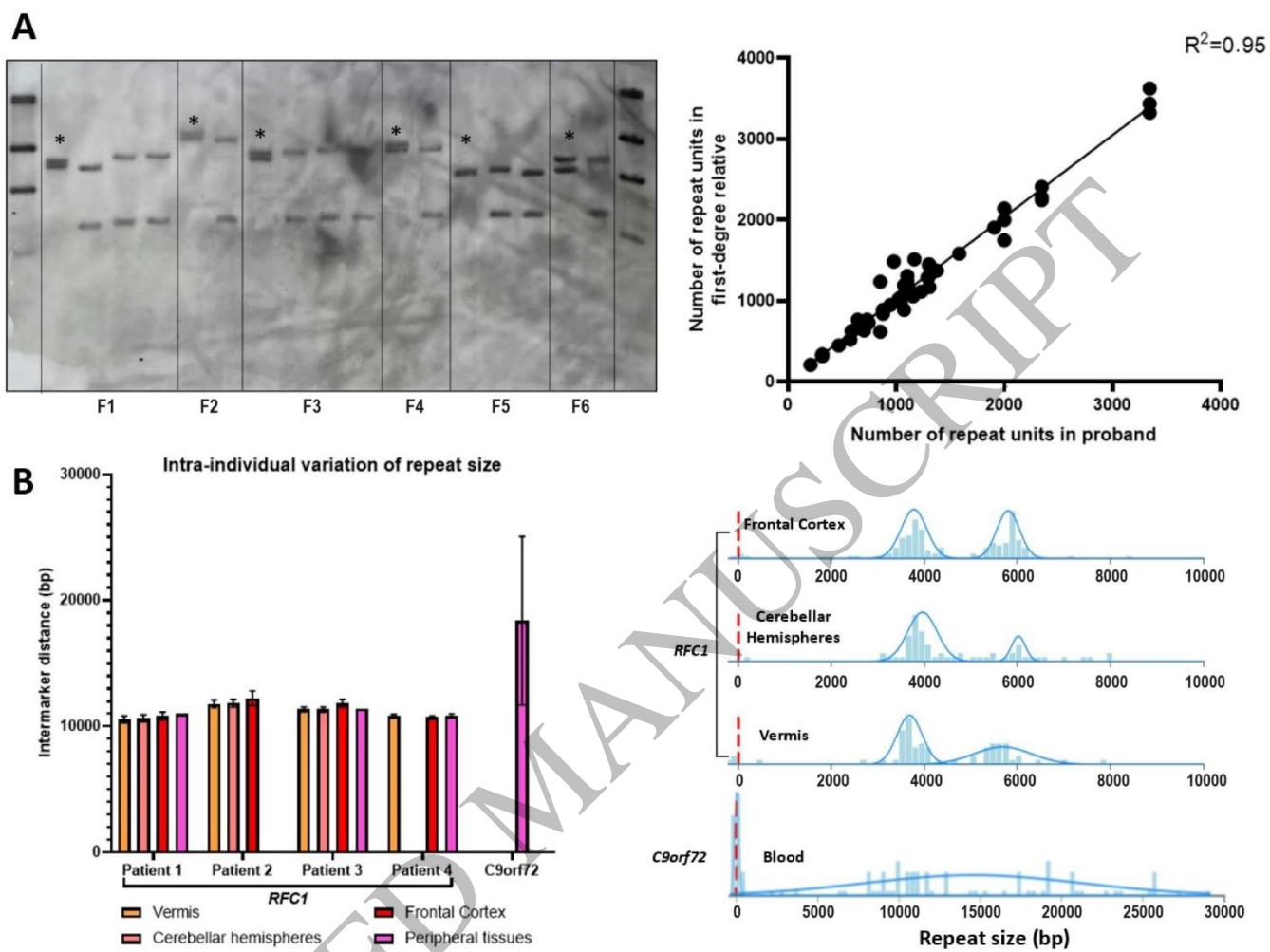


Figure 4
188x135 mm (x DPI)

1
2
3
4
5

Table I Demographic and clinical data of RFC1 positive patients

Demographics			
N. of males (%), females (%)	195 (50%), 197 (50%)		
Positive family history	45 (11%)		
Current age (IQR, min-max)	70 years (64-77; 42-90)		
Age at neurological onset (IQR; min-max)	54 years (49-61; 25-80)		
Deceased	32 (8%)		
Duration of follow up	10 years (6-17)		
Symptoms	Disease onset (N/total)	Last follow-up (N/total)	Age at onset (median, IQRs, min-max)
Chronic cough	178/358 (50%)	267/358 (75%)	40 years (30-50; 15-83)
Sensory symptoms	138/383 (36%)	276/383 (72%)	55 years (50-62; 25-75)
Unsteadiness	255/388 (66%)	366/388 (94%)	56 years (50-63; 30-80)
Oscillopsia	19/352 (6%)	94/352 (27%)	62 years (55-70; 36-81)
Dysarthria/Dysphagia	21/381 (6%)	196/381 (51%)	64 years (57-70; 30-85)

Loss of independent walking	N/total (%)	Age at walking aid (median, IQRs, min-max)	Time to walking aid (median, IQRs, min-max)
Any walking aid	203/379 (54%)	67 years (61–72; 37–88)	10 years (5–16; 0–43)
One stick	181/377 (48%)	66 years (61–71; 37–88)	9 years (5–15; 0–43)
Two sticks	86/354 (24%)	70 years (65–75; 41–86)	12 years (7–20; 0–45)
Wheelchair	61/357 (17%)	70 years (66–76; 46–85)	14 years (11–21; 2–48)
Neurological examination	First examination (N=392)	Most recent examination (N=205)	
Age at examination (IQR, min-max)	65 years (57–70; 32–86)	69 years (62–75; 41–89)	
Disease duration (IQR, min-max)	7 years (3–13; 0–49)	12 years (8–20; 1–43)	
Interval between examinations (IQR, min-max)	-	4 years (2–8; 1–26)	
Sensory impairment	376/376 (100%)	204/204 (100%)	
Pinprick	215/304 (71%)	144/164 (88%)	
Vibration	295/333 (89%)	173/179 (97%)	
Joint Position	116/267 (43%)	88/149 (59%)	
Cerebellar signs	270/374 (72%)	170/202 (84%)	
Vestibular areflexia	147/196 (75%)	116/147 (79%)	
Clinical Phenotype	First examination	Last follow-up	
Isolated neuropathy	93 (24%)	54 (14%)	
Complex neuropathy	150 (38%)	131 (33%)	
Sensory + Cerebellar	134 (34%)	117 (30%)	
Sensory + Vestibular	16 (4%)	14 (3%)	
CANVAS	122 (31%)	195 (50%)	
Not assigned due to incomplete clinical data	28 (7%)	12 (3%)	

1 Data are presented as median (IQRs, min-max) or as percentages. Clinical phenotype was classified in three categories, as detailed in the
2 methods, only when data from neurological examination and/or investigations included at least two of the three main systems involved in *RFCI*
3 disease.