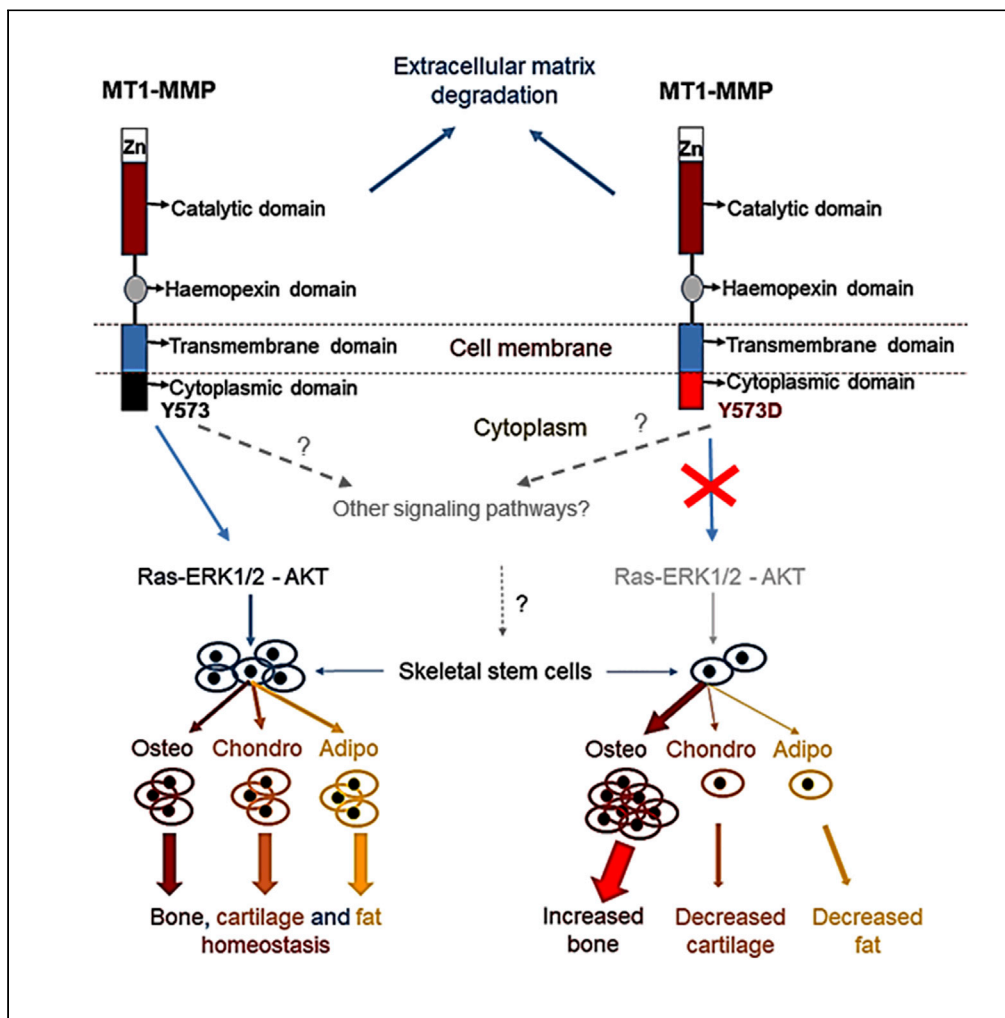


Article

Membrane-type 1 Matrix Metalloproteinase Modulates Tissue Homeostasis by a Non-proteolytic Mechanism



Mukundan Attur,
Cuijie Lu,
Xiaodong
Zhang, ...,
Shoshana Yakar,
Steven Abramson,
Paolo Mignatti

mignap01@nyumc.org

HIGHLIGHTS

The proteinase MT1-MMP controls signaling by its non-proteolytic cytoplasmic tail

The MT1-MMP cytoplasmic tail regulates skeletal stem cell differentiation

MT1-MMP modulates bone, joint cartilage, and fat homeostasis by its cytoplasmic tail



Article

Membrane-type 1 Matrix Metalloproteinase Modulates Tissue Homeostasis by a Non-proteolytic Mechanism

Mukundan Attur,^{1,6} Cuijie Lu,^{1,6} Xiaodong Zhang,² Tianzhen Han,¹ Cassidy Alexandre,² Cristina Valacca,² Shuai Zheng,² Sarina Meikle,² Branka Brukner Dabovic,³ Evelyne Tassone,² Qing Yang,¹ Victoria Kolupaeva,⁴ Shoshana Yakar,⁵ Steven Abramson,¹ and Paolo Mignatti^{1,2,3,7,*}

SUMMARY

Membrane-type 1 matrix metalloproteinase (MT1-MMP, MMP-14), a transmembrane proteinase with a short cytoplasmic tail, is a major effector of extracellular matrix remodeling. Genetic silencing of MT1-MMP in mouse (*Mmp14*^{-/-}) and man causes dwarfism, osteopenia, arthritis, and lipodystrophy, abnormalities ascribed to defective collagen turnover. We have previously shown non-proteolytic functions of MT1-MMP mediated by its cytoplasmic tail, where the unique tyrosine (Y573) controls intracellular signaling. The Y573D mutation blocks TIMP-2/MT1-MMP-induced Erk1/2 and Akt signaling without affecting proteolytic activity. Here, we report that a mouse with the MT1-MMP Y573D mutation (*Mmp14*^{Y573D/Y573D}) shows abnormalities similar to but also different from those of *Mmp14*^{-/-} mice. Skeletal stem cells (SSC) of *Mmp14*^{Y573D/Y573D} mice show defective differentiation consistent with the mouse phenotype, which is rescued by wild-type SSC transplant. These results provide the first *in vivo* demonstration that MT1-MMP modulates bone, cartilage, and fat homeostasis by controlling SSC differentiation through a mechanism independent of proteolysis.

INTRODUCTION

Membrane-type 1 matrix metalloproteinase (MT1-MMP, or MMP-14), the product of the gene *MMP14*, is a cell membrane-bound proteinase with an extracellular catalytic site and a 20-amino acid cytoplasmic tail (Itoh, 2015; Sato et al., 1994). It degrades a variety of extracellular matrix (ECM) components and is expressed by a wide array of normal and tumor cells. Notably, MT1-MMP is the only MMP whose genetic deficiency in the mouse results in severe phenotypes and early death. These features have implicated MT1-MMP as an important component of the proteolytic mechanisms of physiological and pathological processes including bone, cartilage, and adipose tissue homeostasis, as well as tumor invasion, angiogenesis, and metastasis. The analysis of the phenotype of mice genetically deficient in MT1-MMP (*Mmp14*^{-/-}) has shown key roles of this proteinase in the postnatal development and growth of cartilage, bone, and adipose tissue. *Mmp14* deficiency in the mouse results in dwarfism, severe osteopenia, generalized arthritis, and lipodystrophy, among other abnormalities (Chun et al., 2006; Chun and Inoue, 2014; Holmbeck et al., 1999; Zhou et al., 2000). In humans, a mutation of *MMP14* causes multicentric osteolysis and arthritis disease, or Winchester syndrome, which recapitulates much of the phenotype of the *Mmp14*^{-/-} mouse (Evans et al., 2012). Conditional *Mmp14* knockout in uncommitted skeletal stem cells (SSCs, also referred to as mesenchymal stem cells), the common progenitors of osteoblasts, chondrocytes, and adipocytes, recapitulates the skeletal phenotype of the global *Mmp14* knockout mouse (Tang et al., 2013). Conversely, unlike global *Mmp14* deficiency, conditional *Mmp14* knockout in SSC results in thickening of articular cartilage and increased bone marrow (BM)-associated fat but decreased subcutaneous fat, which derives from distinct progenitor cells (Chun et al., 2006; Gupta et al., 2012; Tran et al., 2012). In light of the fundamental role of MT1-MMP in ECM degradation, it has been proposed that the phenotypes of *Mmp14*^{-/-} mice result from defective collagen turnover (Chun et al., 2006; Chun and Inoue, 2014; Holmbeck et al., 1999; Zhou et al., 2000).

However, a number of *in vitro* studies have provided evidence for a variety of non-proteolytic roles of MT1-MMP. We have previously shown that the MT1-MMP cytoplasmic tail activates Ras-ERK1/2 and Ras-AKT

¹Department of Medicine, Division of Rheumatology, NYU School of Medicine, 301 East 17th Street, Suite 1612A, NY 10003, USA

²Department of Cardiothoracic Surgery, NYU School of Medicine, 550 First Avenue, NY 10016, USA

³Department of Cell Biology, NYU School of Medicine, 550 First Avenue, NY 10016, USA

⁴Department of Microbiology, NYU School of Medicine, 550 First Avenue, NY 10016, USA

⁵Department of Basic Science & Craniofacial Biology, NYU College of Dentistry, 345 E. 24th Street, NY 10010, USA

⁶These authors contributed equally

⁷Lead Contact

*Correspondence:

mignap01@nyumc.org

<https://doi.org/10.1016/j.isci.2020.101789>



signaling by a non-proteolytic mechanism that controls cell proliferation, migration, and apoptosis *in vitro*, as well as tumor growth *in vivo* (D'Alessio et al., 2008; Valacca et al., 2015). Signaling is activated in a dose- and time-dependent manner by MT1-MMP binding of low nanomolar concentrations of tissue inhibitor of metalloproteinases-2 (TIMP-2), a physiological protein inhibitor of MT1-MMP. Signaling activation is also mediated by mutant TIMP-2 lacking MMP inhibitory activity (Ala + TIMP-2), as well as by mutant MT1-MMP devoid of proteolytic activity (MT1-MMP E240A), showing that the signaling mechanism is proteolysis-independent. We also showed that MT1-MMP signaling requires the unique tyrosine (Y573) in the cytoplasmic tail, which is phosphorylated by Src and LIM1 kinases (Lagoutte et al., 2016; Nyalendo et al., 2007), and that Y573 substitution with aspartic acid (Y573D), a negatively charged amino acid like phosphotyrosine, abrogates MT1-MMP-mediated activation of Ras-ERK1/2 (D'Alessio et al., 2008). Y573 is required for activation of the small GTPase Rac1 (Gonzalo et al., 2010), controls macrophage migration and infiltration at sites of inflammation (Gonzalo et al., 2010; Sakamoto and Seiki, 2009), as well as MT1-MMP interaction with Src and focal adhesion kinase (FAK) (Wang and McNiven, 2012).

Based on these observations, we generated a mutant mouse with the Y573D substitution in the cytoplasmic tail of MT1-MMP (MT1-MMP Y573D). Here, we report that this mouse shows abnormalities in postnatal bone, cartilage, and adipose tissue development and growth that partly recapitulate the phenotype of the *Mmp14*^{-/-} mouse, but also significant dissimilarities that indicate the relevance of the balance between MT1-MMP proteolytic activity and proteolysis-independent signaling. These phenotypes derive from dysregulation of BM-SSC differentiation, and are rescued by wild-type (wt) BM transplant.

RESULTS

Generation and Macroscopic Characterization of MT1-MMP Y573D Mice

Mice heterozygous (*Mmp14*^{Y573D/wt}) or homozygous (*Mmp14*^{Y573D/Y573D}) for the MT1-MMP Y573D mutation, generated as described in Transparent Methods (Figures 1A and 1B), were macroscopically indistinguishable from *Mmp14*^{wt/wt} mice at birth. However, after the first 2 months, *Mmp14*^{Y573D/wt} and *Mmp14*^{Y573D/Y573D} mice showed a slightly lower growth rate than their *Mmp14*^{wt/wt} littermates (Figure 1C). In mice older than 3 months, the weight of *Mmp14*^{Y573D/Y573D} male and female mice was 15% lower than that of age- and sex-matched *Mmp14*^{wt/wt} littermates (Figure 1D). Adult *Mmp14*^{Y573D/Y573D} mice showed no macroscopic morphological alterations. Both male and female *Mmp14*^{Y573D/Y573D} mice were fertile, bred, and lived up to >2 years of age similarly to *Mmp14*^{wt/wt} mice. Thus, the macroscopic phenotype of *Mmp14*^{Y573D/Y573D} mice did not show the dramatic abnormalities of *Mmp14*^{-/-} mice, which are up to 75% smaller than their wt littermate, have striking skeletal defects and a shortened life span (Table 1).

The Y573D Mutation Does Not Affect the Proteolytic Activity of MT1-MMP

A major consequence of the genetic deficiency of MT1-MMP collagenolytic activity in *Mmp14*^{-/-} mice is the progressive development of fibrosis of soft tissues, including fibrosis of the dermis and hair follicles, with subsequent hair loss (Holmbeck et al., 1999). *Mmp14*^{Y573D/Y573D} mice up to 2 years of age showed no hair loss, and histological analysis of their skin showed no fibrosis of the dermis or hair follicles (Figure 2A), indicating that the collagenolytic activity of MT1-MMP Y573D *in vivo* is comparable to that of wt MT1-MMP. Consistent with this finding, primary fibroblasts from 3-weeks old *Mmp14*^{Y573D/Y573D} and *Mmp14*^{wt/wt} mice, which had comparable levels of MT1-MMP (Figure 2B), showed a similar capacity to degrade collagen, invade 3D collagen and activate proMMP-2 (Figures 2C–2G). Because mutations of the cytoplasmic tail can affect MT1-MMP sorting to, and recycling from the cell membrane (Uekita et al., 2001), we also characterized the cell membrane-associated levels of MT1-MMP *in vivo* by cell surface biotinylation of primary fibroblasts and by flow cytometric analysis of circulating white blood monocytes from *Mmp14*^{Y573D/Y573D} and *Mmp14*^{wt/wt} mice. Consistent with our analysis of the cell-associated collagenolytic activity *in vitro*, the results (Figures 2H and S1A) showed that cells of both genotypes had comparable levels of cell membrane-associated MT1-MMP, indicating that the Y573D mutation has minimal or no detectable effect on cell membrane expression and activity of MT1-MMP *in vitro* and *in vivo*.

In addition to degrading collagen and other ECM components, MT1-MMP cleaves a variety of cell membrane proteins including the collagen receptors CD44 and discoidin domain receptor 1 (DDR1), as well as the metalloproteinase ADAM9 (Chan et al., 2012; Fu et al., 2013; Kajita et al., 2001). Fat, cartilage, and bone (Figure 3A), the tissues affected by the MT1-MMP Y573D mutation (as described under the following subheading), as well as other tissues (Figure S1B), showed minor variations in the levels of MT1-MMP expression in mice of the two genotypes. In fat MT1-MMP was expressed almost exclusively

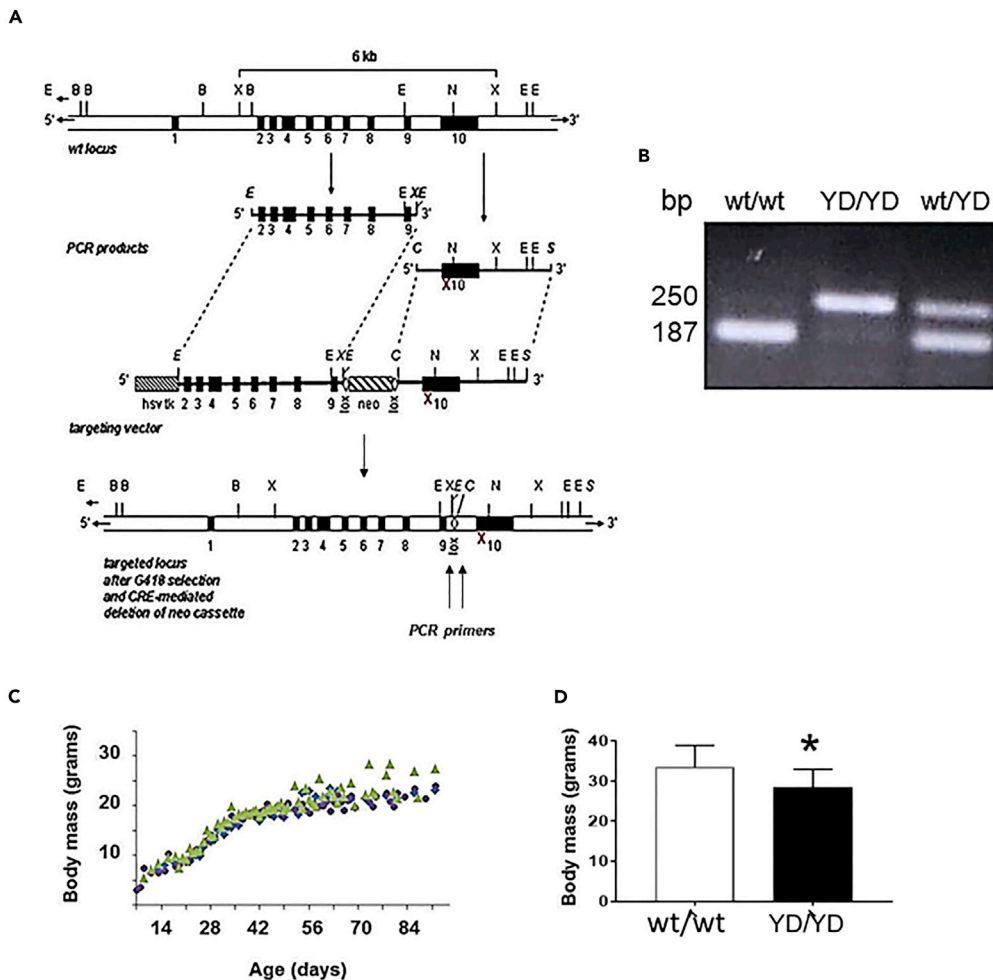


Figure 1. Generation and Macroscopic Characterization of the MT1-MMP Y573D Mouse

(A) Schematic representation of the targeting vector and targeted locus. To construct the targeting vector the genomic sequence of mouse MT1-MMP containing exons 2 to 10 was PCR-amplified from W4 embryonic stem (ES) cells' DNA. A floxed neomycin resistance cassette (*neo*) was inserted into intron 9, adjacent to the 5' end of exon 10, which encodes Y573, and a *hsvtk*-thymidine kinase cassette (*hsvtk*) was placed at the 5' end of the construct. The TAC codon for Y573 was mutated into GAC by PCR. The construct was electroporated into W4 ES cells and colonies of recombinant cells were selected as described in Transparent Methods. The red X indicates the Y573D substitution; B: BamHI; C: ClaI; E: EcoRI; N: NotI; S: Sall; X: XhoI.

(B) Polymerase chain reaction (PCR) genotyping. The mice were genotyped by PCR using primers flanking the *loxP* sites, which afford identification of the three genotypes. The sequence of the primers is reported in Transparent Methods. The size of the amplicons is shown in base pairs (bp) on the left.

(C) Growth curve of *Mmp14*^{wt/wt} (▲), *Mmp14*^{wt/Y573D} (▼) and (*Mmp14*^{Y573D/Y573D}) (●) littermates.

(D) Body mass of 5- to 7-month-old *Mmp14*^{wt/wt} (wt/wt; n = 14) and *Mmp14*^{Y573D/Y573D} (YD/YD; n = 15) mice of both sexes (mean ± S.D.: 33.54 ± 1.44 g vs. 28.5 ± 1.15 g, respectively). *: p ≤ 0.001 by two-tailed Student's t-test.

in the proenzyme form (62 kDa), whereas in cartilage and bone the 42-44 kDa autocatalytic degradation product was prevalent, indicating high levels of proteolytic activity (Rozanov et al., 2001).

We could not detect CD44 in the fat of our mice (Figure 3A), and quantitative polymerase chain reaction (qPCR) analysis showed extremely low levels of CD44 mRNA in both *Mmp14*^{Y573D/Y573D} and *Mmp14*^{wt/wt} mice (Ct values 32.1 and 37.9, respectively). However, the 80 kDa native form of CD44 was present in the cartilage and bone of *Mmp14*^{Y573D/Y573D} and *Mmp14*^{wt/wt} mice in comparable amounts, and no degradation products were detected in mice of either genotype. DDR1 could not be detected in the bone of *Mmp14*^{Y573D/Y573D} or *Mmp14*^{wt/wt} mice (Figure 3A), a result consistent with qPCR analysis (Ct values

Genotype	Global Knockout	SSC Dermo-1	Cartoon ^a	Y573D
Life span	2-3 months	4-5 months	3-6 weeks	Normal (2 years)
Generalized fibrosis of soft tissues	+++	Unknown	Unknown	No fibrosis
Skeleton	Dwarfism Craniofacial abnormalities: domed skull and short snout Osteopenia	Dwarfism Craniofacial abnormalities: domed skull and short snout Osteopenia	Dwarfism craniofacial abnormalities: domed skull and short snout Osteopenia	Decreased cortical bone but increased trabecular bone
Joints	Generalized arthritis with degeneration of articular cartilage	Increased cartilage thickness	Increased cartilage thickness	Decreased cartilage thickness Osteoarthritis-like lesions
Adipose tissue	Generalized lipodystrophy Normal brown fat	Increased bone marrow fat Decreased subcutaneous fat Brown fat unknown	Generalized lipodystrophy Brown fat unknown	Generalized lipodystrophy Brown fat hypertrophy
Inflammation	Increase in inflammatory cytokines	Unknown	Unknown	Decrease of inflammatory cytokines
Hematopoiesis	Pancytopenia	Unknown	Unknown	Normal levels of circulating blood cells
SSC differentiation in 2D culture	Unknown	Decreased osteogenesis Increased adipogenesis and chondrogenesis	Decreased osteogenesis Increased adipogenesis (both in 3D collagen culture)	Increased osteogenesis Decreased adipogenesis and chondrogenesis

Table 1. Comparison of the Phenotypes of MT1-MMP Mutant Mice

^a The Cartoon mouse harbors a S466P point mutation in the MT1-MMP hemopexin domain that generates a misfolded, temperature-sensitive mutant that is retained in the endoplasmic reticulum (Sakr et al., 2018).

31.89 and 31.76, respectively). Conversely, DDR1 was detected in fat and cartilage, but not in bone, extracts as a ~120 kDa form. Comparable levels of a ~62–65 kDa form consistent with a degradation product resulting from MT1-MMP proteolysis (Fu et al., 2013) were present in cartilage, whereas higher levels of ~120 kDa DDR1 was expressed in *Mmp14*^{Y573D/Y573D} than in *Mmp14*^{wt/wt} fat. No other degradation products were detected, showing that wt MT1-MMP and MT1-MMP Y573D have comparable capacity to cleave CD44 and DDR1 *in vivo*.

To corroborate these findings, we analyzed CD44, DDR1, and ADAM9 in primary fibroblasts from adult *Mmp14*^{Y573D/Y573D} and *Mmp14*^{wt/wt} mice (Figure 3B). Western blotting analysis of cell extracts showed comparable levels of native, 80 kDa CD44 and lower molecular weight immunoreactive bands. *Mmp14*^{Y573D/Y573D} and *Mmp14*^{wt/wt} cell extracts showed similar levels of native, ~120 kDa DDR1 and ~62–65 kDa bands consistent with the degradation product resulting from MT1-MMP proteolysis (Fu et al., 2013), as well as ~90 kDa ADAM9 (Figure 3B) and ~40–60 kDa immunoreactive bands consistent with ADAM9 degradation products generated by MT1-MMP (Chan, et al., 2012). However, similar CD44 and DDR1 bands were observed in extracts of cells grown in the presence or absence of the MMP inhibitor GM6001 (Ilomastat), indicating that they either represent nonspecific bands or degradation products generated by non-MMP-mediated cleavage. Therefore, these results showed that the Y573D mutation does not affect MT1-MMP cleavage of CD44, DDR1 or ADAM9 *in vitro* or *in vivo*.

MT1-MMP Y573D Mice Show Structural and Gene Expression Abnormalities in Bone, Articular Cartilage and Adipose Tissue

A striking phenotype of *Mmp14*^{-/-} mice is the dramatically decreased length of long bones, with severe osteopenia and arthritis (Holmbeck et al., 1999; Zhou et al., 2000). At 5 months of age, the femurs of *Mmp14*^{Y573D/Y573D} mice were only ~5% shorter than those of *Mmp14*^{wt/wt} mice (14.81 ± 0.1519 mm vs. 15.61 ± 0.0619 mm; n = 10; p = 0.0001). However, cortical bone thickness at the femur mid-diaphysis was markedly decreased (20-25%) in *Mmp14*^{Y573D/Y573D} vs. *Mmp14*^{wt/wt} mice (Figure 4A), a finding consistent with the osteopenia of the *Mmp14*^{-/-} mouse (Holmbeck et al., 1999; Zhou et al., 2000). Conversely, unlike *Mmp14*^{-/-} mice, which have reduced trabecular bone, and in the homozygous but not in the

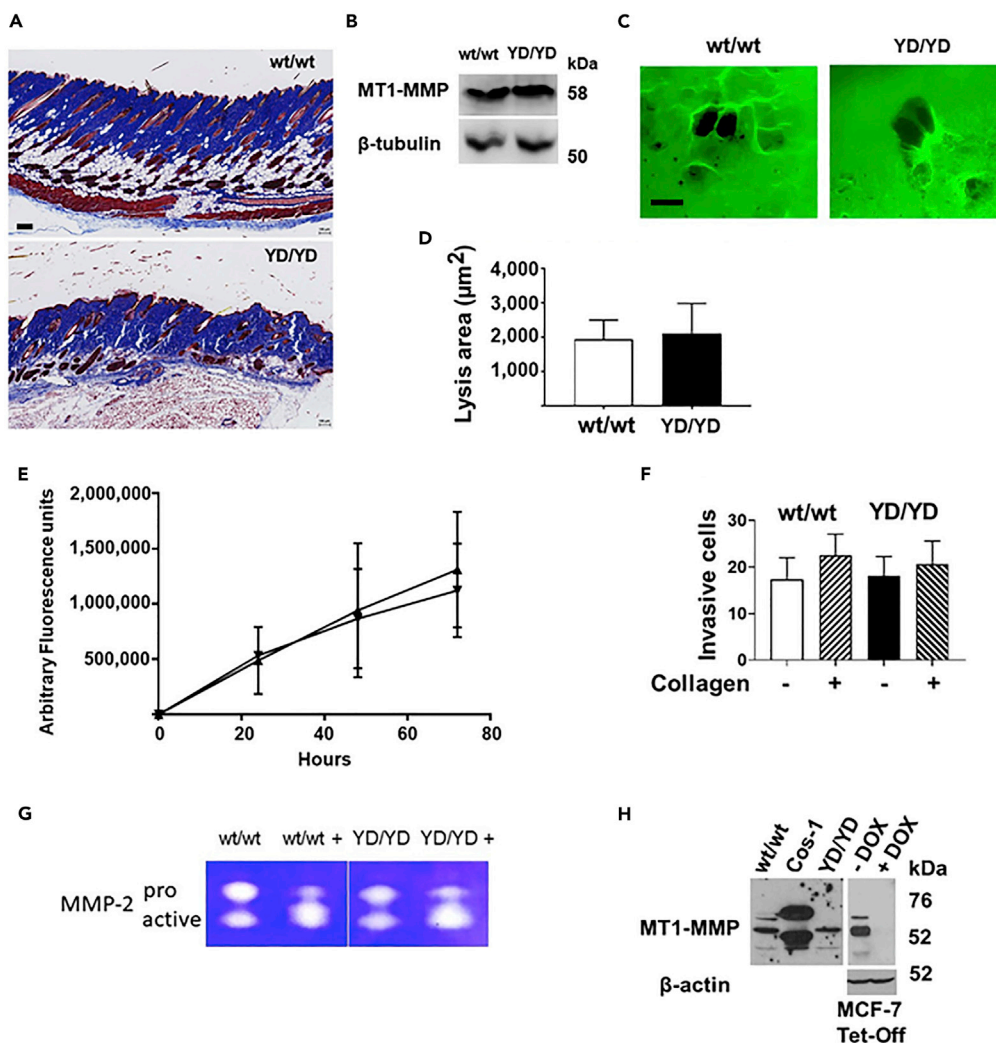


Figure 2. The Y573D Mutation Does Not Affect the Proteolytic Activity of MT1-MMP

(A) Representative histological sections of the skin of 3-months old, male *Mmp14*^{wt/wt} (wt/wt; top panel) and *Mmp14*^{Y573D/Y573D} mice (YD/YD; bottom panel). Trichrome staining; scale bar, 100 μm .

(B) Western blotting analysis of MT1-MMP expression in primary fibroblasts from *Mmp14*^{wt/wt} (wt/wt) and *Mmp14*^{Y573D/Y573D} mice (YD/YD). β -tubulin is shown in the lower panel as a loading control.

(C) Representative images of primary fibroblasts from *Mmp14*^{wt/wt} (wt/wt) and *Mmp14*^{Y573D/Y573D} mice (YD/YD) grown atop Alexa Fluor 488-labeled collagen fibrils for 72 hr. Areas of collagen degradation appear as black holes in the fluorescent collagen layer. Scale bar, 100 μm .

(D) Lysis areas (wt/wt n = 60; YD/YD n = 76) were measured by Photoshop. Mean \pm S.D. is shown. This experiment was repeated three times with comparable results.

(E) Confluent primary fibroblasts from *Mmp14*^{wt/wt} (▲) and *Mmp14*^{Y573D/Y573D} mice (▼) were grown atop Alexa Fluor 488-labeled collagen fibrils for 72 hr, and the fluorescence released into the culture supernatant was measured at the indicated times as described in Transparent Methods. Mean \pm S.D. of two independent experiments is shown for each time point.

(F) Analysis of cell migration and collagen invasion by primary fibroblasts from *Mmp14*^{wt/wt} (wt/wt) and *Mmp14*^{Y573D/Y573D} mice (YD/YD) on 8- μm pore membranes coated (+) or non-coated (-) with type I collagen as described in Transparent Methods. Shown in the ordinate is the mean \pm S.D. of the number of migrated cells per 20X microscopic field. This experiment was repeated twice with comparable results.

(G) Gelatin zymographic analysis of proMMP-2 activation in the serum-free conditioned medium of primary cultures of *Mmp14*^{wt/wt} (wt/wt) and *Mmp14*^{Y573D/Y573D} (YD/YD) mouse fibroblasts incubated with exogenous human recombinant proMMP-2 for 16 hr. Before zymography the conditioned medium was incubated in the absence or presence (+) of APMA (1 mM in DMSO) for 1.5 hr at 37°C as a positive control for proMMP-2 activation. This experiment was repeated three times with comparable results.

Figure 2. Continued

(H) Cell surface biotinylation of MT1-MMP. Left panel: cell membrane-associated MT1-MMP in primary fibroblasts from *Mmp14*^{wt/wt} (wt/wt) and *Mmp14*^{Y573D/Y573D} (YD/YD) mice analyzed as described in Transparent Methods. COS-1 cells transiently transfected with MT1-MMP cDNA and surface biotinylated are shown as a control for the biotinylation procedure. Right panel: Western blotting analysis of extracts of human MCF-7 breast carcinoma cells stably expressing MT1-MMP under control by a Tet-Off promoter (D'Alessio et al., 2008), grown in the absence (–) or presence (+) of doxycycline (DOX; 1 μg/mL). This blot is shown as a control for the specificity of the antibody used for MT1-MMP immunoprecipitation after cell surface biotinylation. β-actin is shown as a loading control. This experiment was done twice with comparable results.

See also Figure S1.

heterozygous state (Holmbeck et al., 1999; Zhou et al., 2000), femurs and tibias showed significantly increased (40-50%) trabecular bone in both *Mmp14*^{Y573D/Y573D} and *Mmp14*^{Y573D/wt} mice relative to age- and sex-matched *Mmp14*^{wt/wt} mice (Figures 4B–4D). This effect was accompanied by increased TRAP-positive osteoclasts (Figure S2), indicating enhanced bone remodeling, a feature also observed in *Mmp14*^{–/–} mice (Holmbeck et al., 1999).

Gene expression profiling of bone from *Mmp14*^{Y573D/Y573D} mice (Figure 4E) showed 76 genes significantly ($p \leq 0.05$) up- or downregulated relative to *Mmp14*^{wt/wt} littermates. A subset of 17 of these transcripts were upregulated 2-fold or more, and 26 transcripts were downregulated 2-fold or more. Consistent with the morphometric analyses, gene ontology analysis showed highly significant enrichment for biological processes related to osteoblast differentiation, bone remodeling, ossification, and bone growth (Figure 4F).

The knee joints of 2-month-old mice showed several abnormalities. Both *Mmp14*^{Y573D/wt} and *Mmp14*^{Y573D/Y573D} mice displayed marked thinning of articular cartilage (Figure 5A top panels, and B) with loss of proteoglycans (Figures 5C and 5D), clustering and cloning of chondrocytes (Figure 5A lower panels), classic histologic features of the articular cartilage degeneration associated with human osteoarthritis (OA) and surgical models of OA in mice. The knee cartilage of 2-year-old mice also showed fissures, chondrocyte clustering and cloning, abnormalities typical of aging-associated cartilage degeneration that were not observed in age- and sex-matched *Mmp14*^{wt/wt} mice (Figure 5E).

RNA-Seq analysis of the transcriptome of cartilage from *Mmp14*^{Y573D/Y573D} mice (Figure 6A) showed significant dysregulation of the expression of 1,549 genes relative to *Mmp14*^{wt/wt} mice ($p \leq 0.05$). Of these genes, 694 were upregulated 2-fold or more, and 92 were downregulated 2-fold or more. Gene ontology analysis (Figure 6B) showed highly significant enrichment for biological processes related to ECM homeostasis, cartilage development, and chondrocyte differentiation. As these biological processes are strongly dysregulated in human OA, we analyzed the transcriptome of *Mmp14*^{Y573D/Y573D} cartilage for expression of genes involved in human OA (Figure 6C). Gene expression profiling of human OA cartilage has revealed 1,423 genes significantly ($p \leq 0.05$) up- or downregulated relative to normal cartilage, 111 of which are strongly up- or downregulated (≥ 2 -fold or ≤ 2 -fold, respectively) (Geyer et al., 2009; Karlsson et al., 2010). We found that 48 of these 111 OA-associated genes are also strongly regulated in *Mmp14*^{Y573D/Y573D} mouse cartilage, including all the genes for collagens and other ECM proteins upregulated in human OA, ECM-degrading proteinases, as well as genes involved in cell metabolism (Figure 6D). Thus, consistent with its histological features, *Mmp14*^{Y573D/Y573D} joint cartilage showed significant gene expression similarity to human OA.

Sections of the long bones of adult *Mmp14*^{Y573D/wt} and *Mmp14*^{Y573D/Y573D} mice also showed marked decrease in BM-associated fat relative to *Mmp14*^{wt/wt} littermates (Figures 7A and 7B). A similar reduction was apparent in all other fat pads, as evidenced by ~50% decrease in body adiposity by DEXA analysis and in the gonadal fat of *Mmp14*^{Y573D/Y573D} mice relative to age- and sex-matched *Mmp14*^{wt/wt} littermates (Figures 7C and 7D). This effect was observed in mice of both sexes and ages ranging 3 months to 2 years (Figures S3 and S4). Histological analysis of abdominal and subcutaneous WAT from *Mmp14*^{Y573D/Y573D} mice revealed marked decrease in the size of adipocytes (Figures 8A and 8C). These findings are consistent with the lipodystrophy of *Mmp14*^{–/–} mice (Chun et al., 2006, 2010). In contrast, the brown adipose tissue (BAT) of *Mmp14*^{Y573D/Y573D} mice showed pronounced adipocyte hypertrophy, with decreased expression of the characteristic marker of BAT, uncoupling protein-1 (UCP-1; Figures 8B and S5).

The transcriptome of abdominal WAT from *Mmp14*^{Y573D/Y573D} mice (Figure 8D) showed significant ($p \leq 0.05$) up- or downregulation of the expression of 151 genes, relative to *Mmp14*^{wt/wt} mice. Gene ontology

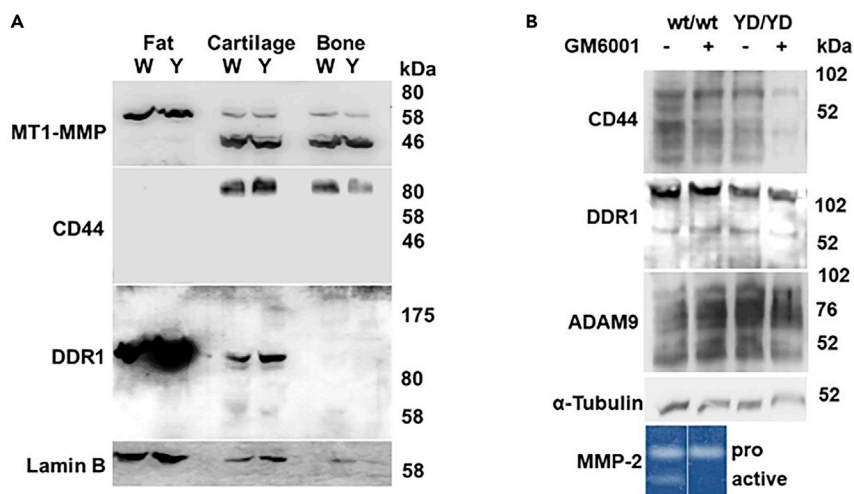


Figure 3. The Y573D Mutation Does Not Affect MT1-MMP Cleavage of CD44, DDR1, or ADAM9

(A) Western blotting analysis of MT1-MMP, CD44, and DDR1 expression and degradation in abdominal fat, joint cartilage, and bone (femur) from 3-month-old *Mmp14*^{wt/wt} (W) and *Mmp14*^{Y573D/Y573D} (Y) male mice. Tissues from three littermates per genotype were pooled for protein extraction. Lamin B is shown as a loading control. A representative result of multiple experiments is shown.

(B) Western blotting analysis of CD44, DDR1, and ADAM9 in cell extracts of primary fibroblasts from *Mmp14*^{wt/wt} (wt/wt) and *Mmp14*^{Y573D/Y573D} (YD/YD) mice grown in the presence (+) or absence (–) of GM6001 (50 μM) for 24 hr. α-tubulin is shown as a loading control. A representative result of multiple experiments is shown. MT1-MMP expression is shown in Figure 2B. Bottom panel: gelatin zymography analysis of proMMP-2 activation is shown as a control for GM6001 inhibition of MT1-MMP. The cells were grown for 16 hr in serum-free medium supplemented with human recombinant proMMP-2 without (–) or with (+) GM6001 (50 μM), and the conditioned medium was analyzed by gelatin zymography.

See also Figure S1.

analysis (Figure 8E) identified highly significant enrichment for biological processes including control of small-molecule synthesis, lipid and fatty acid metabolism, response to corticosteroids, and ECM homeostasis. Some of these pathways are also overrepresented in *Mmp14*^{+/-} mice on a high-fat diet (Chun et al., 2010). Moreover, similar to *Mmp14*^{+/-} mice, *Mmp14*^{Y573D/Y573D} mice were protected from body weight gain induced by high-fat diet (Figure S6A).

In addition to reduced WAT, *Mmp14*^{Y573D/Y573D} mice showed strongly decreased fasting levels of plasma insulin relative to age- and sex-matched *Mmp14*^{wt/wt} littermates, with normoglycemia and normal food consumption (Figure S6B). *Mmp14*^{Y573D/Y573D} and *Mmp14*^{wt/wt} mice also had comparable levels of adrenocorticotropic hormone, which controls adipose tissue metabolism, and leptin, a hormone secreted predominantly by adipose tissue. Conversely, *Mmp14*^{Y573D/Y573D} mice had extremely low serum levels of the inflammatory cytokines interleukin-6 (IL-6), monocyte chemoattractant protein-1/chemokine (C-C motif) ligand 2 (MCP-1/CCL2), and IL-10 relative to age- and sex-matched *Mmp14*^{wt/wt} mice (Figure S7).

MT1-MMP Y573D Expression Alters SSC Erk1/2 and Akt Signaling, Proliferation and Apoptosis, and Skews Differentiation from Chondro- and Adipogenesis toward Osteogenesis

Our previous *in vitro* studies have shown that the Y573D mutation abrogates activation of ERK1/2 and AKT signaling induced by TIMP-2 binding to MT1-MMP (D'Alessio et al., 2008). However, Y573 substitution with D (a negatively charged amino acid) might also mimic phosphotyrosine and result in constitutive activation of other signaling pathways, including FAK, whose activation is downregulated in SSC from conditional MT1-MMP knockout mice (Tang et al., 2013). Therefore, we characterized adipose tissue, articular cartilage and bone from *Mmp14*^{wt/wt} and *Mmp14*^{Y573D/Y573D} mice for activation of Erk1/2, Akt and Fak. The results (Figure 9A) showed no significant differences in activation of these signaling pathways between the two genotypes. However, consistent with our previous studies (D'Alessio et al., 2008; Valacca et al., 2015),

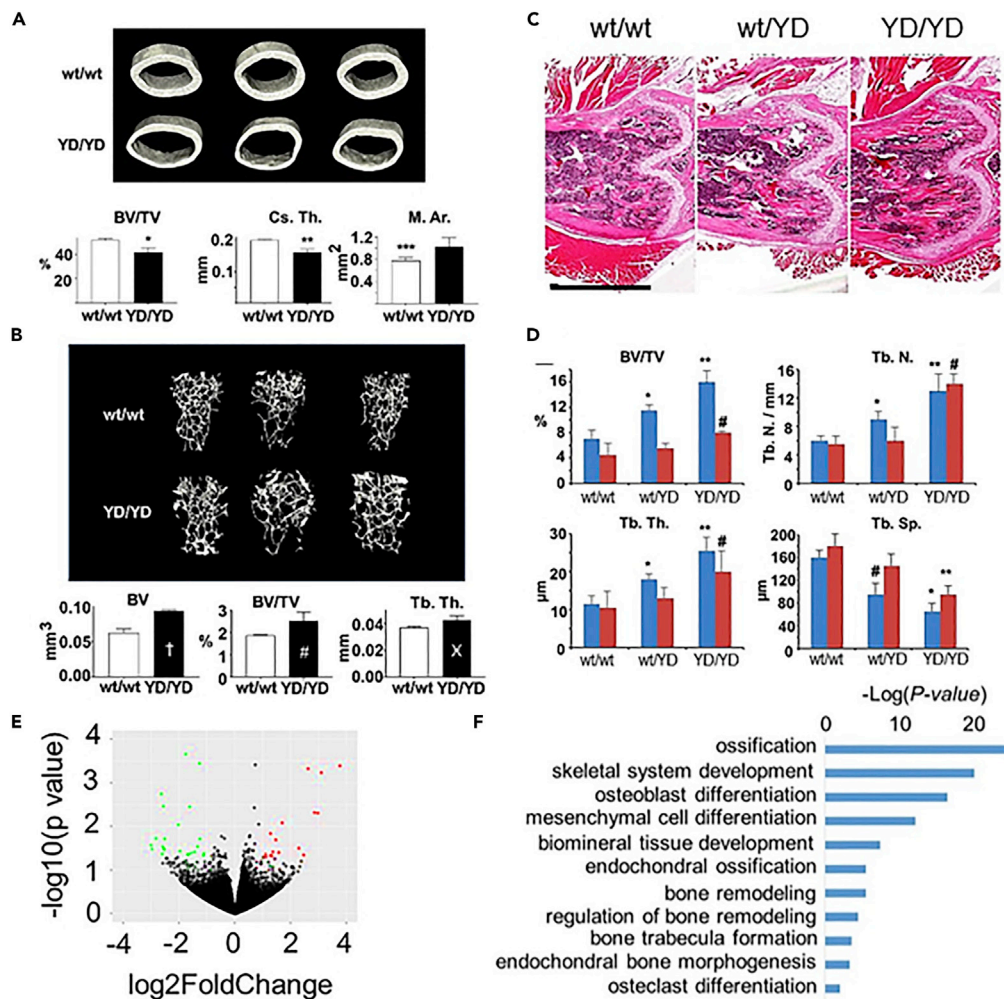


Figure 4. MT1-MMP Y573D Mice Show Decreased Cortical Bone and Increased Trabecular Bone

(A and B) MicroCT analysis of cortical (A) and trabecular bone (B) from *Mmp14*^{wt/wt} (wt/wt; n = 3) and *Mmp14*^{Y573D/Y573D} (YD/YD; n = 3) 3-month-old, male mice. Upper panels; 3D reconstruction; lower panels: quantitative analysis. The histograms show mean \pm S.D. (A) BV/TV: bone volume/tissue volume; *; p = 0.0067; Cs. Th.: cortical thickness; **p = 0.0009; M. Ar.: bone marrow area; ***p = 0.0524. (B) BV: bone volume; †; p = 0.0115; BV/TV: bone volume/tissue volume; #: p = 0.0366; Tb. Th.: trabecular thickness; X; p = 0.0290. All p values by two-tailed Student's t-test. (C) Representative sections of the femurs of *Mmp14*^{wt/wt} (wt/wt), *Mmp14*^{Y573D/wt} (wt/YD) and *Mmp14*^{Y573D/Y573D} (YD/YD) 2-month-old, male mice. H&E staining; scale bar, 1 mm. (D) Osteomeasure analysis of trabecular bone in femurs (blue bars) and tibiae (red bars) of the mice shown in panel (C). Mean \pm s.d. of 5 mice/group is shown. BV/TV: bone volume/total volume; *; p = 0.0329; **; p = 0.0012; #: p = 0.0489. Tb. N.: number of trabeculae; *; p = 0.0425; **; p = 0.0021; #: p = 0.0018. Tb. Th.: trabecular thickness; *; p = 0.0478; **; p = 0.0018; #: p = 0.0089. Tb. Sp.: space between trabeculae; *; p = 0.0014; **; p = 0.0019; #: p = 0.0197 (sample vs corresponding wt control). All p values by two-tailed Student's t-test. (E) RNA-seq analysis of differential gene expression in bone from *Mmp14*^{Y573D/Y573D} vs. *Mmp14*^{wt/wt} mice. Volcano plot representing genes with a significant (p \leq 0.05) fold change higher than 2 (red dots) or lower than -2 (green dots). (F) GO analysis of pathways overrepresented in the bone of *Mmp14*^{Y573D/Y573D} vs. *Mmp14*^{wt/wt} 3-months-old male mice. See also Figure S2.

exogenous TIMP-2 strongly upregulated Erk1/2 and Akt activation in primary fibroblasts from *Mmp14*^{wt/wt} mice but had no such effect in *Mmp14*^{Y573D/Y573D} cells. Conversely, the levels of active Fak were not increased by exogenous TIMP-2 in either *Mmp14*^{Y573D/Y573D} or *Mmp14*^{wt/wt} fibroblasts (Figure 9B).

The observation that the phenotype of *Mmp14*^{Y573D/Y573D} mice involves abnormalities of bone, cartilage, and adipose tissue indicated that the MT1-MMP Y573D mutation might affect the differentiation of SSC,

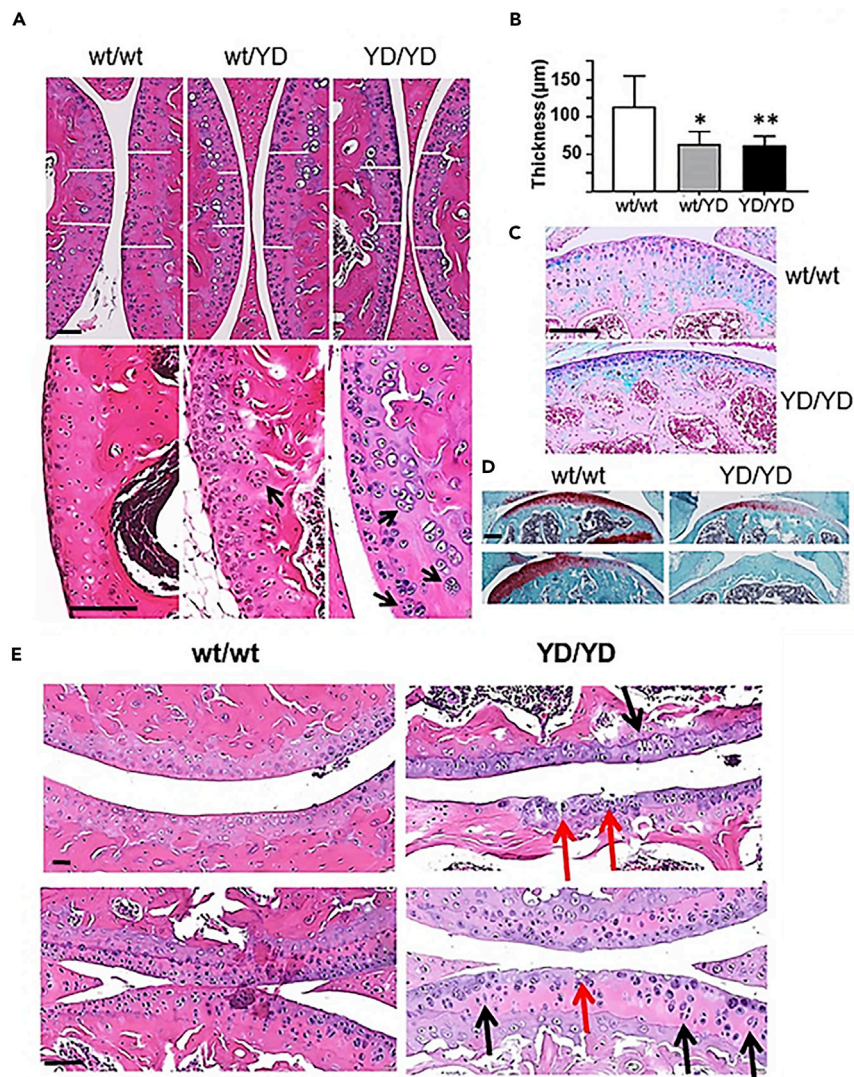


Figure 5. MT1-MMP Y573D Mice Show Reduced Thickness and Structural Abnormalities of Articular Cartilage

Histological and histochemical analyses of knee joint cartilage from *Mmp14*^{wt/wt} (wt/wt), *Mmp14*^{Y573D/wt} (wt/YD), and *Mmp14*^{Y573D/Y573D} (YD/YD) 3-month-old male mice.

(A) H&E staining; black scale bars in top and bottom panels, 100 µm. White bars indicate the thickness of the cartilage at comparable locations in the joint. Arrows: chondrocyte cloning.

(B) Thickness of articular cartilage measured by Photoshop as shown in panel A (top panels) on multiple sections of knee joints of 3 mice per genotype. Mean ± S.D. is shown. *: p = 0.0004; **: p = 0.0001 by two-tailed Student's t-test.

(C and D) (C) Alcian blue staining, and (D) Safranin O staining of sections of knee joints of 2-month-old male mice with the indicated genotypes. Scale bars in C and D, 100 µm.

(E) Histological sections of the shoulder (upper panels) and knee joints (lower panels) of 2-year old *Mmp14*^{wt/wt} (wt/wt) and *Mmp14*^{Y573D/Y573D} (YD/YD) male mice. Red arrows point to cartilage erosion and fissures, and black arrows to chondrocytes oriented orthogonally to the cartilage surface, typical signs of cartilage degeneration. H&E staining; scale bars in top and bottom panels, 100 µm.

the common progenitor cells of these tissues. Therefore, we isolated SSC from the BM of *Mmp14*^{wt/wt} and *Mmp14*^{Y573D/Y573D} littermates and characterized them *in vitro* for Erk1/2, Akt, and Fak signaling. The results (Figure 9C) showed no significant differences in the basal levels of active Erk1/2, Akt, or Fak; however, exogenous TIMP-2 activated Erk1/2 and Akt in *Mmp14*^{wt/wt} but not in *Mmp14*^{Y573D/Y573D} SSC. Conversely, TIMP-2 did not activate Fak in cells of either genotype.

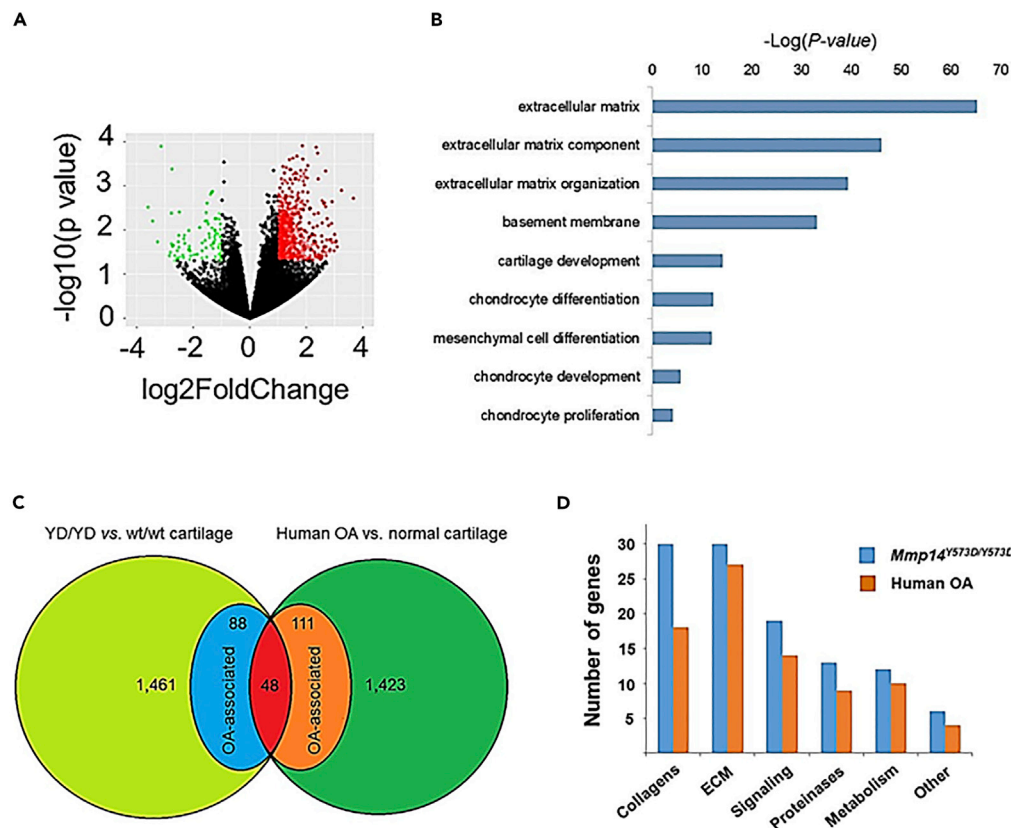


Figure 6. The Gene Expression Profile of the Articular Cartilage of $Mmp14^{Y573D/Y573D}$ Mice Shows Similarity to that of Human OA

(A) RNA-seq analysis of differential gene expression in articular cartilage from $Mmp14^{Y573D/Y573D}$ vs. $Mmp14^{wt/wt}$ 3-month-old male mice. Volcano plot representing genes with a significant ($p \leq 0.05$) fold change higher than 2 (red dots) or lower than -2 (green dots).

(B) GO analysis of pathways overrepresented in the articular cartilage of $Mmp14^{Y573D/Y573D}$ vs. $Mmp14^{wt/wt}$ 3-month-old male mice.

(C) Venn diagram of differentially expressed genes in articular cartilage from $Mmp14^{Y573D/Y573D}$ vs. $Mmp14^{wt/wt}$ 3-month-old male mice, and human OA cartilage vs. normal knee joint cartilage (Geyer et al., 2009; Karlsson et al., 2010).

(D) Gene families upregulated ≥ 2 -fold ($p \leq 0.05$) in knee joint cartilage from both $Mmp14^{Y573D/Y573D}$ 3-month-old male mice and OA patients.

$Mmp14^{Y573D/Y573D}$ SSC contained fewer colony-forming units-fibroblasts (CFU-F) than $Mmp14^{wt/wt}$ SSC (1.5×10^{-6} vs. 4.5×10^{-6} , respectively), formed much smaller colonies (Figure 10A), and showed remarkably lower proliferation and higher apoptosis (Figures 10B and 10C). RNA-Seq analysis (Figure 10D) showed 486 genes significantly dysregulated ($p \leq 0.05$) in $Mmp14^{Y573D/Y573D}$ vs. $Mmp14^{wt/wt}$ SSC. Gene ontology analysis (Figure 10E) revealed highly significant enrichment of genes involved in DNA synthesis, cell cycle regulation and response to DNA damage, indicating dysregulation of cell proliferation and survival, cell functions controlled by Erk1/2 and Akt signaling.

We then induced BM-derived SSC from $Mmp14^{Y573D/Y573D}$ and $Mmp14^{wt/wt}$ littermates to differentiate *in vitro* into the osteoblast, chondrocyte, and adipocyte lineages. qPCR analysis of the expression of lineage-specific markers showed a dramatic increase in osteogenesis (Figure 10F, top panel), and marked decrease in chondrocyte and adipocyte differentiation (Figure 10F, middle and bottom panels, respectively) in $Mmp14^{Y573D/Y573D}$ vs. $Mmp14^{wt/wt}$ SSC. The expression levels of wt MT1-MMP and MT1-MMP Y573D did not change during osteoblast differentiation, and on day 17 comparable levels of MT1-MMP mRNA were expressed by $Mmp14^{wt/wt}$ and $Mmp14^{Y573D/Y573D}$ SSC (Figure 10F; top panel). Conversely, in agreement with previous reports (Y. Tang et al., 2013), MT1-MMP expression decreased by $\sim 80\%$ during

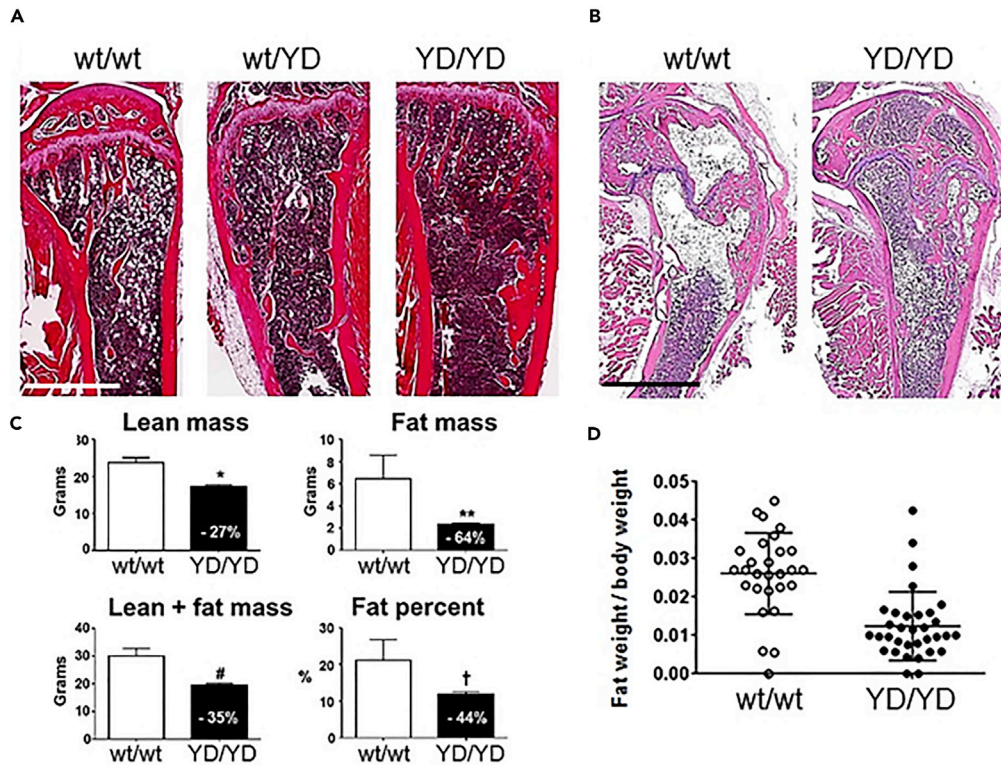


Figure 7. MT1-MMP Y573D Mice Show Decreased White Adipose Tissue

(A and B) Sections of the tibias of *Mmp14*^{wt/wt} (wt/wt), *Mmp14*^{wt/Y573D} (wt/YD) and *Mmp14*^{Y573D/Y573D} (YD/YD) 4-month (A) or 2-year-old male mice (B). H&E staining; scale bar, 1 mm. (C) DEXA scanning analysis of *Mmp14*^{wt/wt} (wt/wt; n = 27) and *Mmp14*^{Y573D/Y573D} (YD/YD; n = 30) male and female, 7-month-old mice. Mean \pm S.D. is shown. *: p = 0.0018, **: p = 0.0295, #: p = 0.0177, †: p = 0.0230 by two-tailed Student's t-test. Statistically significant percent differences between the two genotypes are indicated in the closed bars. (D) Weight of abdominal fat normalized to total body weight of 2-, 4- and 7-month-old, *Mmp14*^{wt/wt} (wt/wt) and *Mmp14*^{Y573D/Y573D} (YD/YD) male and female mice; p = 0.0001. See also [Figures S3](#) and [S4](#).

chondrocyte differentiation in both *Mmp14*^{wt/wt} and *Mmp14*^{Y573D/Y573D} SSC, and on day 17 *Mmp14*^{Y573D/Y573D} cells expressed significantly lower MT1-MMP levels than *Mmp14*^{wt/wt} SSC ([Figure 10F](#), middle panel).

To confirm that the differences in BM-SSC differentiation between *Mmp14*^{wt/wt} and *Mmp14*^{Y573D/Y573D} mice are mediated by the MT1-MMP Y573D mutation, we transfected wt MT1-MMP or MT1-MMP Y573D cDNA into mouse C3H10T1/2 cells, which are functionally similar to SSC ([Tang et al., 2004](#)), and analyzed their capacity to differentiate into osteoblasts, chondrocytes and adipocytes ([Figure 10G](#)) by lineage-specific staining. Consistent with the results obtained with primary BM-derived SSC, C3H10T1/2 cells transfected with MT1-MMP Y573D showed markedly increased osteogenesis, and decreased chondro- and adipogenesis relative to wt MT1-MMP transfectants ([Figure 10G](#)). Therefore, in both BM-derived SSC and C3H10T1/2 cells MT1-MMP Y573D expression skewed differentiation toward the osteogenic lineage.

The Bone and Fat Phenotypes of *Mmp14*^{Y573D/Y573D} Mice Are Rescued by wt BM Transplant

These results indicated that the bone, cartilage, and fat phenotypes of *Mmp14*^{Y573D/Y573D} mice result from a defect in SSC. Therefore, we hypothesized that these phenotypes could be rescued by transplantation of *Mmp14*^{wt/wt} BM; and, *vice versa*, transplantation of *Mmp14*^{Y573D/Y573D} BM could transfer the phenotype to *Mmp14*^{wt/wt} mice. We therefore transplanted 3- and 5-month-old mice with BM from mice of the same age and the opposite genotype or, as controls, from mice of the same age and genotype, and analyzed their phenotypes two months later.

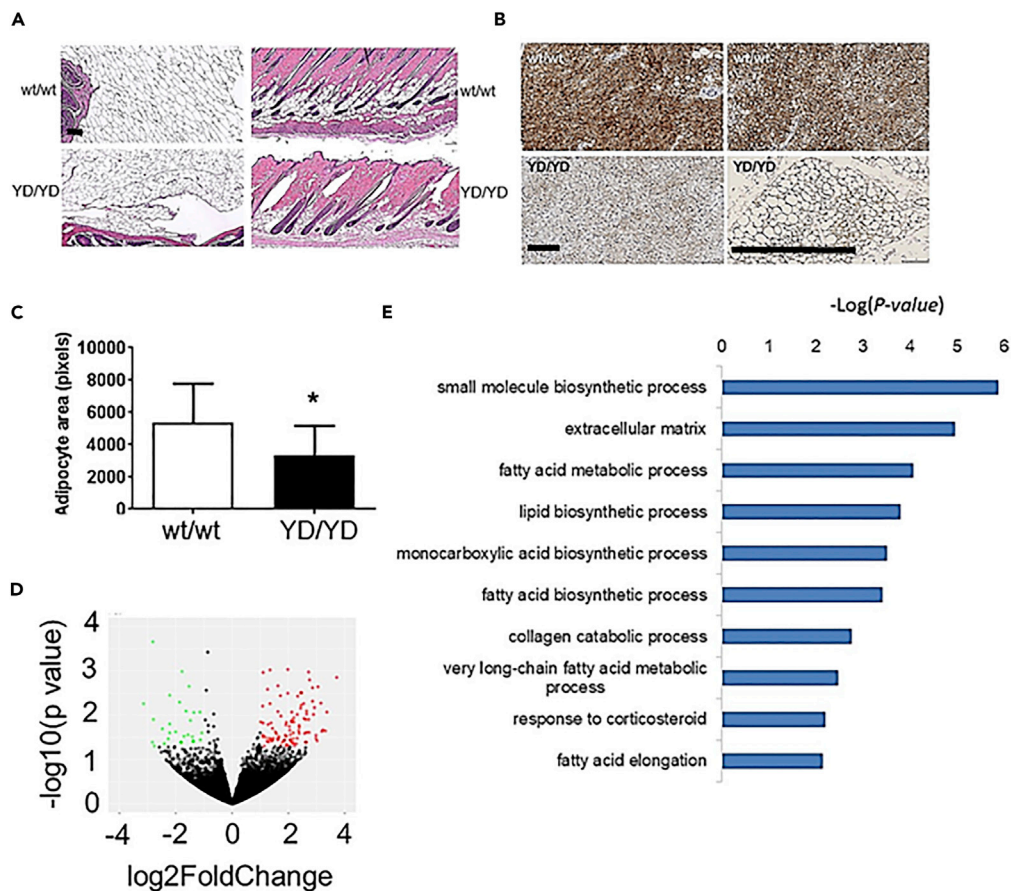


Figure 8. MT1-MMP Y573D Mice Have Hypotrophic White Fat and Hypertrophic Brown Fat

(A) H&E stained sections of periepididymal (left panels) and subcutaneous fat (right panels) of *Mmp14*^{wt/wt} (wt/wt) and *Mmp14*^{Y573D/Y573D} (YD/YD) 4-month-old male mice. Scale bar, 100 μ m.

(B) Sections of infrascapular brown fat from *Mmp14*^{wt/wt} (wt/wt) and *Mmp14*^{Y573D/Y573D} (YD/YD) 4-month-old male mice, immunostained with antibody to UCP-1. Scale bars in left and right panels, 100 μ m.

(C) Adipocyte size of periepididymal fat from *Mmp14*^{wt/wt} (wt/wt) and *Mmp14*^{Y573D/Y573D} (YD/YD) 4-month-old male mice. The area of individual adipocytes was measured by Photoshop using multiple sections (5 mice/genotype) of periepididymal fat similar to those shown in A (left panels). Mean \pm S.D. is shown. *p = 0.0003 by two-tailed Student's t-test.

(D) RNA-seq analysis of differential gene expression white adipose tissue from *Mmp14*^{Y573D/Y573D} vs. *Mmp14*^{wt/wt} 3-month-old male mice. Volcano plot representing genes with a significant ($p \leq 0.05$) fold change higher than 2 (red dots) or lower than -2 (green dots).

(E) GO analysis of pathways overrepresented in white adipose tissue of *Mmp14*^{Y573D/Y573D} vs. *Mmp14*^{wt/wt} mice. See also Figures S3–S7.

We characterized the trabecular and cortical bone of the femurs of the transplanted mice by microCT analysis (Figure 11). The results showed that transplantation of *Mmp14*^{wt/wt} BM had no effect on the cortical bone of *Mmp14*^{Y573D/Y573D} mice transplanted at 3 months or 5 months of age (Figures 11A and S8); however, it completely rescued their trabecular bone phenotype (Figures 11B and S8). Conversely, transplantation of *Mmp14*^{Y573D/Y573D} BM did not transfer the trabecular or cortical bone phenotype to *Mmp14*^{wt/wt} mice.

We also found that BM transplant induced no significant changes in articular cartilage thickness relative to the original phenotype of the transplant recipients in this short-term study (data not shown).

Similarly to the bone phenotype, *Mmp14*^{wt/wt} BM transplant completely rescued the decrease in fat mass of *Mmp14*^{Y573D/Y573D} mice. *Mmp14*^{Y573D/Y573D} BM did not transfer the adipose tissue phenotype to

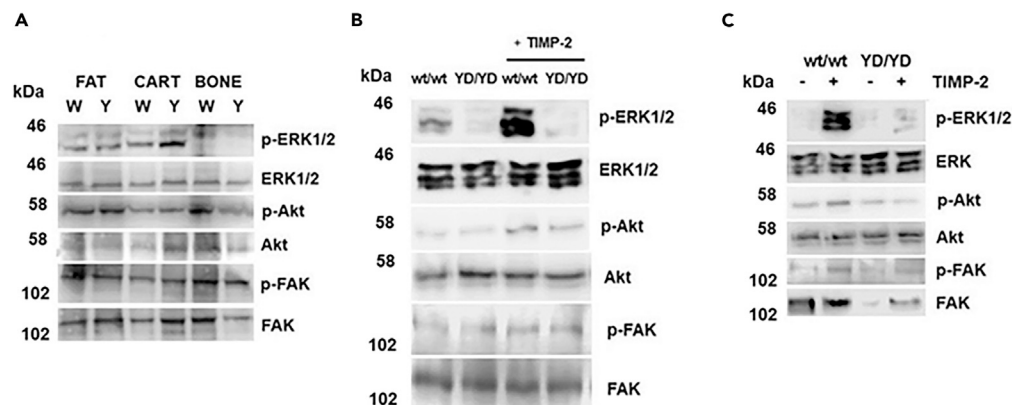


Figure 9. Western Blotting Analysis of Intracellular Signaling in Tissues and Cells from *Mmp14^{wt/wt}* and *Mmp14^{Y573D/Y573D}* Mice

(A) ERK1/2, Akt, and FAK signaling in perigonadal adipose tissue (FAT), knee joint cartilage (CART), and femurs (BONE) of *Mmp14^{wt/wt}* (W) and *Mmp14^{Y573D/Y573D}* (Y) 4-month-old male mice.

(B and C) Analysis of ERK1/2, Akt and FAK activation (p-ERK1/2, p-Akt and p-FAK) in primary fibroblasts (B) or BM-derived SSC (C) from *Mmp14^{wt/wt}* (wt/wt) and *Mmp14^{Y573D/Y573D}* (YD/YD) 2-month-old male mice, incubated with human recombinant TIMP-2 (100 ng/mL) or an equivalent volume of control vehicle for 15 min. Total ERK1/2, Akt and FAK protein is shown as a loading control. Equal amounts of cell extract protein were run in two separate gels and transferred onto separate membranes, one of which was probed with antibodies to the phosphorylated forms and the other to the total forms of ERK1/2, Akt and FAK. These experiments were performed two to three times with similar results.

Mmp14^{wt/wt} mice (Figure 12A). However, consistent with the existence of BM-derived adipocyte precursors able to colonize peripheral WAT and BAT (Crossno et al., 2006), histological analysis of WAT and BAT from transplanted mice (Figures 12B and 12C) showed mixtures of normal and hypotrophic white adipocytes in both *Mmp14^{wt/wt}* mice transplanted with *Mmp14^{Y573D/Y573D}* BM and *Mmp14^{Y573D/Y573D}* mice transplanted with *Mmp14^{wt/wt}* BM. Conversely, BM recipients acquired the BAT phenotype of donor mice (Figure 12C).

The analysis of BM engraftment, described in Transparent Methods, showed virtually complete replacement of the recipient's BM with the donors' BM (Figure S9). The circulating blood cells of *Mmp14^{Y573D/Y573D}* mice displayed no significant abnormalities and numbers comparable to those of *Mmp14^{wt/wt}* mice, showing that the MT1-MMP Y573D mutation does not affect hematopoietic cells. Therefore, these results showed that the bone and fat phenotype of transplanted *Mmp14^{Y573D/Y573D}* mice resulted from the transfer of SSC and not from other BM cells.

DISCUSSION

MT1-MMP plays an important role in the postnatal development of a variety of tissues including bone, cartilage, and fat. The striking abnormalities of *Mmp14^{-/-}* mice – dwarfism, severe osteopenia, generalized arthritis, fibrosis, and lipodystrophy – have been ascribed to impaired collagen turnover, which also plays a fundamental role in SSC differentiation and affects adipocyte development (Chun et al., 2006; Chun and Inoue, 2014; Holmbeck et al., 1999; Zhou et al., 2000). The data presented in this paper show that, in addition to its proteolytic activity, MT1-MMP contributes to bone, cartilage, and adipose tissue homeostasis through a proteolysis-independent mechanism mediated by its cytoplasmic domain. This conclusion is based on the following observations.

We have previously shown that MT1-MMP activates ERK1/2 and Akt signaling upon binding of physiological concentrations of TIMP-2 (D'Alessio et al., 2008; Valacca et al., 2015). Signaling is activated by mutant MT1-MMP devoid of proteolytic activity (MT1-MMP E240A) or TIMP-2 lacking MMP inhibitory activity (Ala + TIMP-2) and is blocked by the Y573D substitution in the MT1-MMP cytoplasmic tail (D'Alessio et al., 2008; Figure 2G). Here we showed that the Y573 mutation does not significantly alter the collagenolytic activity of MT1-MMP or its cleavage of cell membrane proteins *in vivo* and *in vitro* (Figures 2 and 3). It should also be noted that changes in the levels of membrane proteins cleaved by MT1-MMP result in mouse phenotypes different from those of *Mmp14^{Y573D/Y573D}* mice. CD44^{-/-} or ADAM9^{-/-} mice have no phenotype (Protin et al., 1999; Weskamp et al., 2002), whereas the genetic deficiency of FGFR2 (cleaved by ADAM9) or Notch1

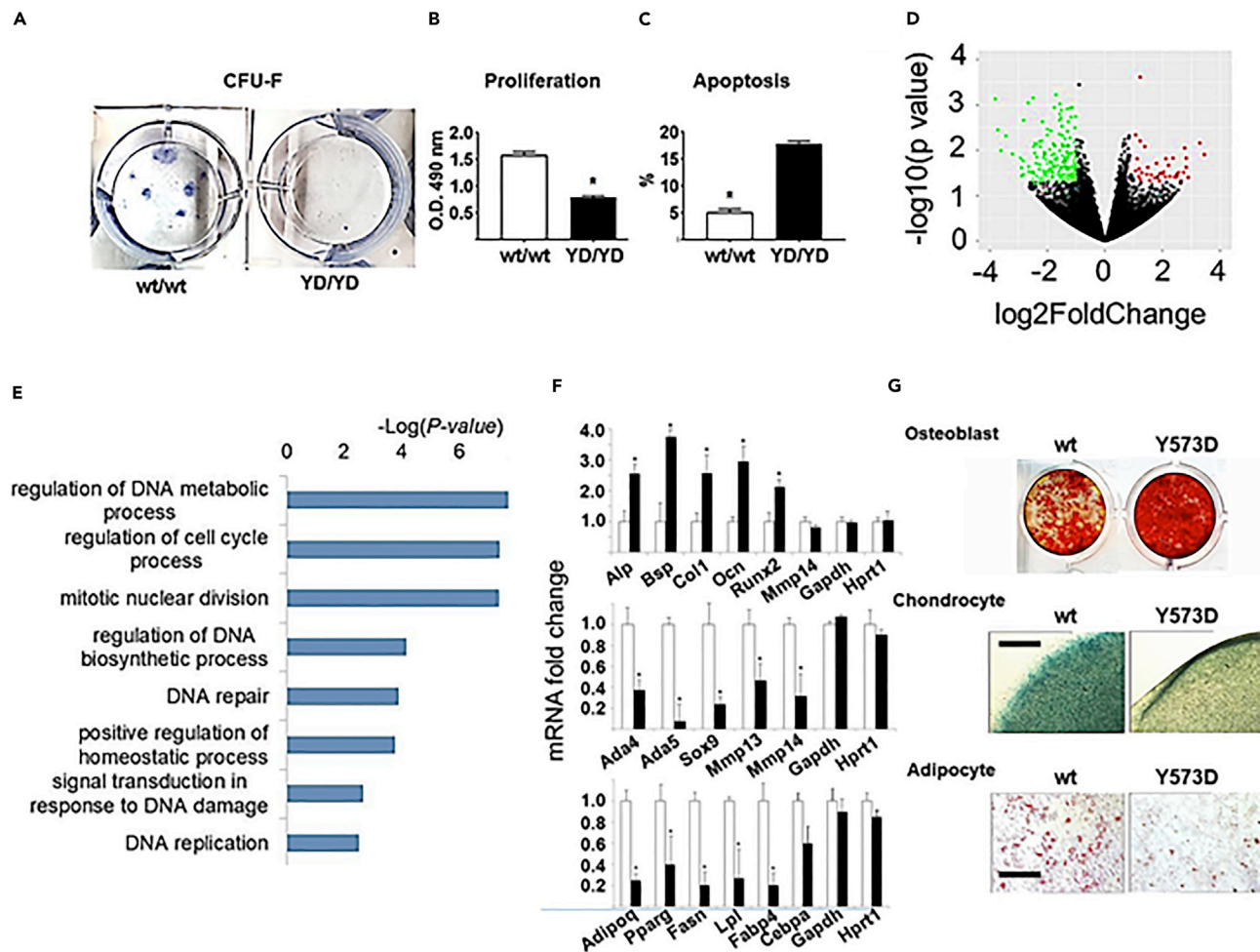


Figure 10. MT1-MMP Y573D Expression Impairs SSC Proliferation and Survival and Skews Differentiation toward Osteogenesis

(A) CFU-F of *Mmp14*^{wt/wt} (wt/wt) and *Mmp14*^{Y573D/Y573D} (YD/YD) SSC; Giemsa staining. This experiment was repeated twice with similar results.

(B) MTS assay of cells grown for 48 hr. Mean \pm S.D. is shown; * $p = 0.0001$ by two-tailed Student's t-test. This experiment was repeated three times with similar results.

(C) Percentage of apoptotic nuclei in DAPI-stained cells (298–320 nuclei). Mean \pm S.D. is shown; * $p = 0.001$ by two-tailed Student's t test. This experiment was repeated twice with similar results.

(D) RNA-seq analysis of differential gene expression in articular cartilage from *Mmp14*^{Y573D/Y573D} vs. *Mmp14*^{wt/wt} mice. Volcano plot representing genes with a significant ($p \leq 0.05$) fold change higher than 2 (red dots) or lower than -2 (green dots).

(E) GO analysis of pathways overrepresented in BM-derived SSC from *Mmp14*^{wt/wt} (wt/wt) and *Mmp14*^{Y573D/Y573D} (YD/YD) 3-month-old male mice.

(F) qPCR analysis of osteoblast (top), chondrocyte (middle) and adipocyte markers (bottom panel) in BM-derived SSC from *Mmp14*^{wt/wt} (open bars) and *Mmp14*^{Y573D/Y573D} (solid bars) 4-month-old littermates, after 17 days in osteoblast or chondrocyte or adipocyte differentiation medium. Shown are mean \pm S.D. of data normalized to geomean of GAPDH and HPRT1 for the three cell types. *: $p \leq 0.05$ by two-tailed Student's t-test. This experiment was repeated twice with similar results.

(G) Differentiation of C3H10T1/2 cells stably transfected with wt or MT1-MMP Y573D cDNA. Top panel, osteogenesis: Alizarin red staining of cells after 21 days in osteoblast differentiation medium. Middle panel, chondrogenesis: Alcian blue staining of cell pellets after 21 days in chondrocyte differentiation medium. Scale bar, 500 μ m. Bottom panel, adipogenesis: oil red O staining of cells grown in adipocyte differentiation medium for 7 days. Scale bar, 500 μ m. This experiment was repeated three times with similar results.

results in embryonic lethality, and Notch1 haploinsufficiency causes virtually no phenotype (Conlon et al., 1995; Xu et al., 1998). DDR1 deficiency in the mouse results in female infertility and defective lactation, which we did not observe in *Mmp14*^{-/-} mice; conversely, DDR1 haploinsufficiency causes no phenotype (Vogel et al., 2001). Therefore, consistent with our previous findings (D'Alessio et al., 2008; Valacca et al., 2015), our present data show that MT1-MMP activation of Erk1/2 and Akt signaling is independent of its proteolytic activity and mediated by its cytoplasmic domain.

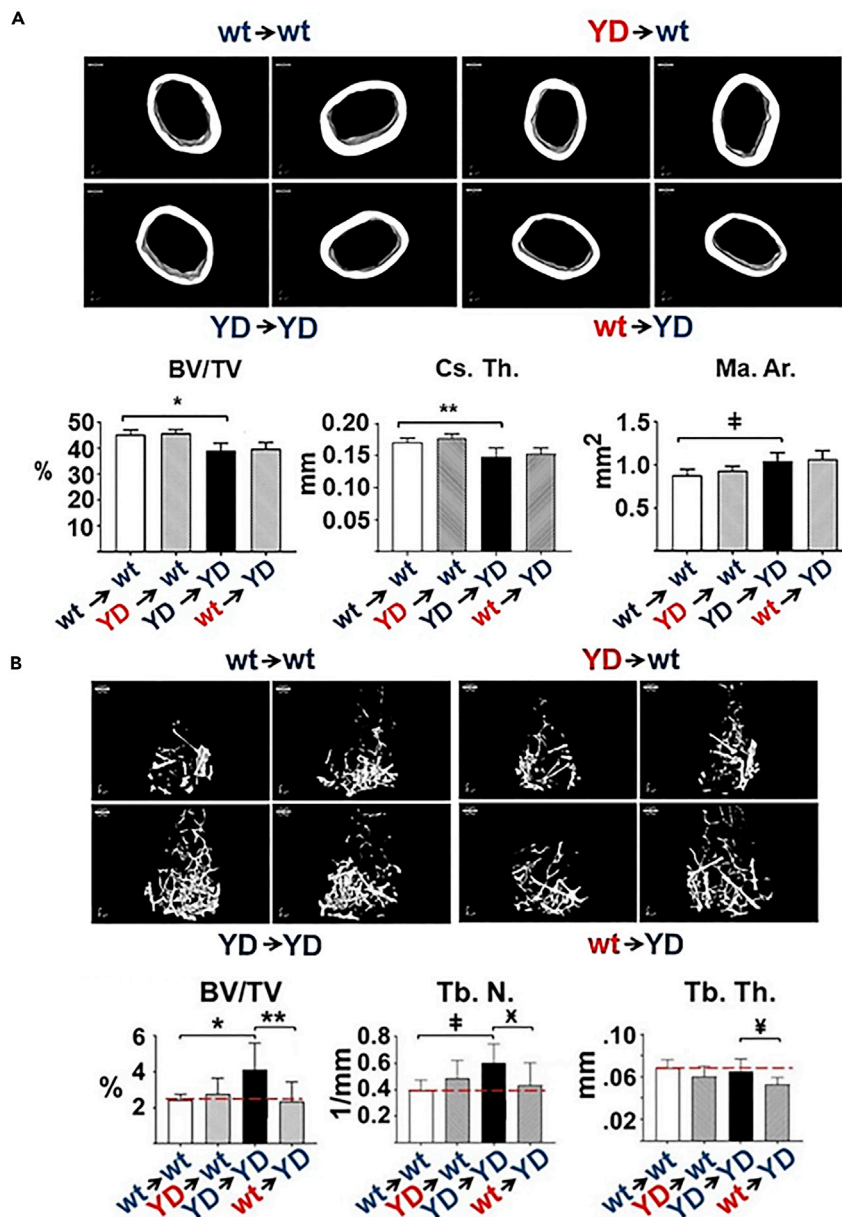


Figure 11. wt BM Transplant Rescues the Trabecular Bone Phenotype of MT1-MMP Y573D Mice

(A) MicroCT 3D reconstruction (upper panels) and quantitative measurements (lower panels) of cortical bone of *Mmp14^{wt/wt}* male mice transplanted with BM from age- and sex-matched *Mmp14^{Y573D/Y573D}* mice (YD→wt) or *Mmp14^{Y573D/Y573D}* male mice transplanted with BM from age- and sex-matched *Mmp14^{wt/wt}* mice (wt→YD). Mice transplanted with BM of the same genotype (wt→wt and YD→YD) were used as controls. The mice (n = 9–11/group) were transplanted at 3 months of age and analyzed 2 months later. BV/TV: bone volume normalized to total tissue volume; Cs. Th.: cortical thickness; Ma. Ar.: bone marrow area. The YD→YD samples show ~20% reduced cortical bone relative to wt→wt samples, as expected (Figure 1A); wt→YD or YD→wt BM transplant does not change the phenotype of the recipient. Mean ± S.D. is shown. *: p = 0.0003; **: p = 0.0021; ‡: p = 0.0038 by two-tailed Student's t-test.

(B) MicroCT 3D reconstruction (upper panels) and quantitative measurements (lower panels) of trabecular bone of the mice described in (A). The YD→YD samples show 35–40% increase in trabecular bone relative to wt→wt samples, as expected (Figure 1B); *Mmp14^{wt/wt}* BM transplant lowers the amount of trabecular bone in *Mmp14^{Y573D/Y573D}* mice to a level similar to that of the wt→wt controls (dotted line). Conversely, BM transplant from *Mmp14^{Y573D/Y573D}* mice does not transfer the phenotype to *Mmp14^{wt/wt}* mice. BV/TV: bone volume normalized to total tissue volume; Tb. N. trabecular number/mm; Tb. Th.: trabecular thickness. Mean ± S.D. is shown. *: p = 0.047; **: p = 0.0150; ‡: p = 0.0124; X: p = 0.0397; ¥: p = 0.0117 by two-tailed Student's t-test.

See also Figures S8 and S9.

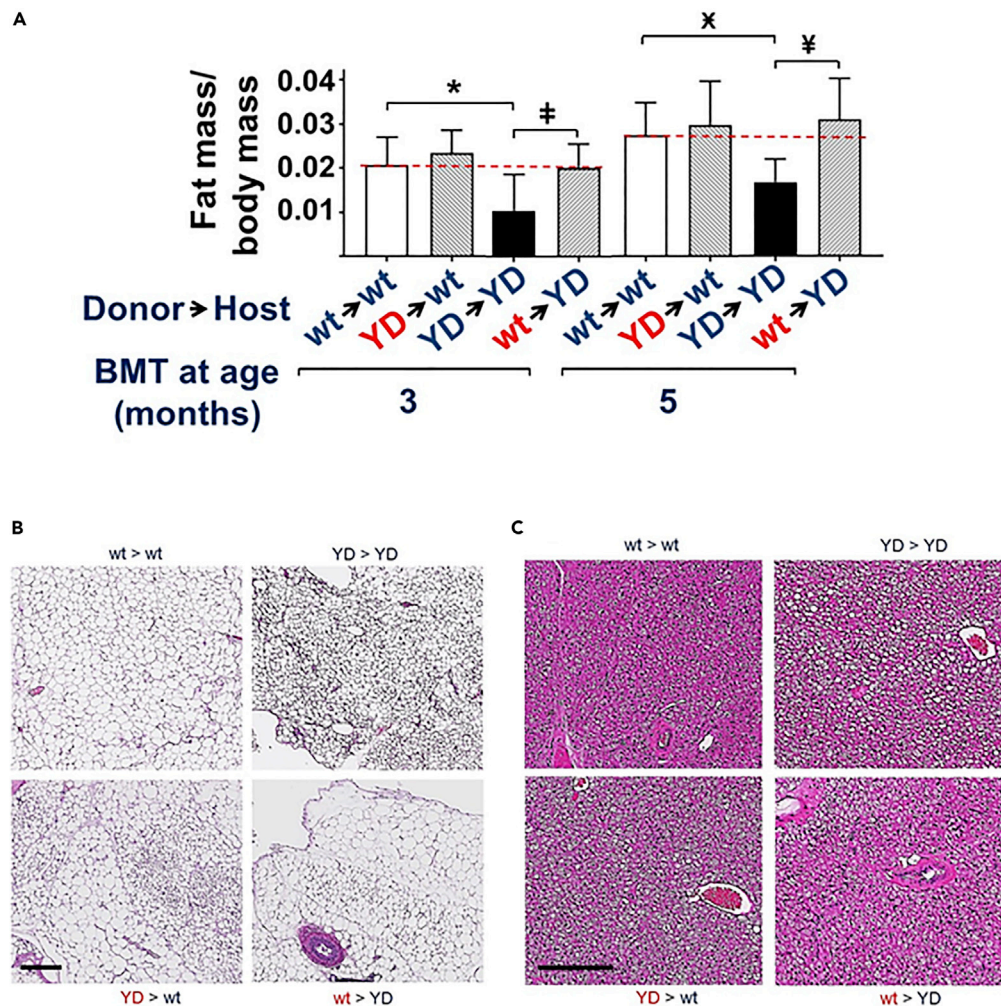


Figure 12. BM Transplant Partially Transfers the White and Brown Fat Phenotypes to Recipient Mice

(A) wt BM Transplant Rescues the Adipose Tissue Phenotype of MT1-MMP Y573D Mice. Weight of visceral fat normalized to total weight of the mice ($n = 9-11/\text{group}$) described in Figure 8, transplanted at 3 or 5 months of age and analyzed 2 months later. The YD \rightarrow YD samples show $\sim 50\%$ less fat than age-matched wt \rightarrow wt controls, as expected (Figure 4). *Mmp14*^{wt/wt} BM transplant increases the amount of adipose tissue in *Mmp14*^{Y573D/Y573D} mice to a level similar to that of the wt \rightarrow wt controls (dotted line). Conversely, BM transplant from *Mmp14*^{Y573D/Y573D} mice does not reduce the fat mass in *Mmp14*^{wt/wt} mice. Mean \pm S.D. is shown. *: $p = 0.006$; ‡: $p = 0.008$; X: $p = 0.003$; ¥: $p = 0.001$ by two-tailed Student's t-test. (B and C) WAT and BAT of BM-transplanted mice show a mixture of donor and recipient phenotypes. Histological sections of periepididymal WAT (B) and infrascapular BAT (C) of the mice described in Figure 8. H&E staining; scale bars in B and C, 100 μm . The YD \rightarrow YD samples show hypotrophic white adipocytes (A) and hypertrophic brown adipocytes, as expected (Figures 5B and 5C); wt \rightarrow YD or YD \rightarrow wt BM transplant results in a mixture of normal and hypotrophic white adipocytes (A), and in recipient mice acquiring the BAT phenotype of the donors. See also Figures S8 and S9.

To investigate the physiological significance of our *in vitro* findings, we generated a mouse in which MT1-MMP activation of Erk1/2 and Akt is abrogated by the Y573D mutation. The data presented in this paper show that mice bearing this mutation present phenotypes that partially recapitulate those caused by *Mmp14* deficiency, as well as significantly different phenotypes. The phenotypes of *Mmp14*^{Y573D/Y573D} mice appear to be milder than those of *Mmp14*^{-/-} mice, indicating that both the proteolytic and signaling functions of MT1-MMP are required for normal postnatal development and homeostasis. However, while comparing the phenotypes of *Mmp14*^{Y573D/Y573D} and *Mmp14*^{-/-} mice (Table 1) provides information about the relative contribution of the proteolytic and non-proteolytic functions of MT1-MMP to postnatal development and tissue homeostasis, significant limitations must be considered. *Mmp14*^{-/-}

mice die within 2–3 months of age (Holmbeck & al., 1999), whereas *Mmp14*^{Y573D/Y573} mice have a normal life span, and their phenotypes become apparent in animals older than 2 months. The global deficiency of *Mmp14* causes severe runting and wasting that ultimately lead to death. It is possible that the dramatic abnormalities of some tissues including cartilage and fat result from indirect effects. For instance, the generalized inflammatory state of *Mmp14*^{-/-} mice (Shimizu-Hirota et al., 2012), as opposed to the decreased inflammatory state of *Mmp14*^{Y573D/Y573D-} mice, may be the cause of, or contribute to, their severe arthritis. Indeed, conditional *Mmp14* knockout in uncommitted SSC (Table 1) results in increased thickness of the articular cartilage in 3-month-old mice (Y. Tang et al., 2013), in contrast with the reduced thickness and degeneration of *Mmp14*^{-/-} and *Mmp14*^{Y573D/Y573D} cartilage (Holmbeck and al., 1999).

Furthermore, the relative contribution of MT1-MMP proteolytic and signaling functions to postnatal development and homeostasis may vary at different stages of postnatal life. The lethality of *Mmp14* deficiency limits our understanding of the role of MT1-MMP to relatively early stages of postnatal development; in contrast, the normal life span of *Mmp14*^{Y573D/Y573} mice affords studying the role of MT1-MMP in adult animals. Our finding that the phenotype of the *Mmp14*^{Y573D/Y573} mouse becomes apparent in adult mice indicates that the proteolytic and the signaling function of MT1-MMP have predominant roles at different stages of postnatal development. The severe phenotype and precocious mortality of the *Mmp14*^{-/-} mouse shows that MT1-MMP proteolytic activity has a fundamental role at early stages. Conversely, silencing MT1-MMP signaling is compatible with normal development but results in altered tissue homeostasis in the adult animal.

Our analysis of the articular cartilage of *Mmp14*^{Y573D/Y573D} mice showed signs of tissue degeneration similar to but milder than that of *Mmp14*^{-/-} mice. However, whereas *Mmp14*^{-/-} mice have severe, acute arthritis (Holmbeck and al., 1999), the articular cartilage of *Mmp14*^{Y573D/Y573D} mice shows histological signs and gene expression profile comparable to human OA, a chronic degenerative condition. The striking similarity of the gene expression profile of the articular cartilage of *Mmp14*^{Y573D/Y573D} mice to that of human OA raises an interesting point about the role of MT1-MMP in articular cartilage homeostasis and the pathogenesis of OA. MT1-MMP expression decreases during chondrocyte differentiation, and in differentiated chondrocytes is ~80% lower than in undifferentiated SSC (Tang et al., 2013). Consistent with this finding, *Mmp14* deficiency in uncommitted SSC results in increased differentiation into chondrocytes and thickening of articular cartilage (Tang et al., 2013), suggesting that MT1-MMP expression contrasts normal chondrocyte development and articular cartilage homeostasis. Indeed, MT1-MMP is upregulated in OA cartilage relative to normal cartilage (Dreier et al., 2004; Kevorkian et al., 2004; Tchetina et al., 2005), indicating that MT1-MMP expression must be strictly controlled for normal cartilage homeostasis. In *Mmp14*^{Y573D/Y573D} SSC-derived chondrocytes MT1-MMP expression is lower than in *Mmp14*^{wt/wt} mice (Figure 10F); however, their cartilage is thinner and presents signs of degeneration, showing that altering MT1-MMP signaling in SSC has a pathological effect even in the presence of low levels of MT1-MMP proteolytic activity. Thus, MT1-MMP signaling is required for articular cartilage homeostasis.

Our phenotypic analysis of *Mmp14*^{Y573D/Y573D} mice showed significant abnormalities in WAT, consistent with the phenotype of *Mmp14*^{-/-} mice and of mice with conditional *Mmp14* knockout in uncommitted SSC (Tang et al., 2013) (Table 1). However, some differences are noteworthy. In contrast to WAT hypotrophy, we surprisingly found BAT hypertrophy in *Mmp14*^{Y573D/Y573} mice, a finding at variance with the normal BAT of *Mmp14*^{-/-} mice (Chun et al., 2006). Similarly, BM-associated WAT is decreased in *Mmp14*^{Y573D/Y573} mice but increased in mice with conditional knockout of *Mmp14* in uncommitted SSC (Tang et al., 2013) (unfortunately, the severe wasting and early death of *Mmp14*^{-/-} mice preclude a reliable assessment of BM-associated fat, which typically develops with aging). However, while the SSC of conditional *Mmp14*^{-/-} mice show increased adipocyte differentiation *in vitro* (Tang et al., 2013), the SSC of *Mmp14*^{Y573D/Y573D} mice show decreased adipocyte differentiation. MT1-MMP is a fundamental effector of adipocyte growth through collagen degradation, a process required for adipocyte increase in size (Chun et al., 2006; Chun and Inoue, 2014). However, *Mmp14*^{-/-} mice have multiple, severe developmental and metabolic defects that can affect adipose tissue development indirectly. Our data show that *in vivo* MT1-MMP contributes to both WAT and BAT homeostasis by a proteolysis-independent mechanism mediated by its cytoplasmic tail. Several studies have shown the involvement of MT1-MMP in adipose tissue homeostasis (Chun et al., 2006; Feinberg et al., 2016; Fenech et al., 2015a, 2015b), and genetic associations between MT1-MMP and obesity in humans have been reported (Chun et al., 2010). MT1-MMP has also been

proposed to control metabolic balance (Mori et al., 2016), a function that could explain the WAT and BAT abnormalities of MT1-MMP Y573D mice. Understanding the proteolysis-independent mechanism of MT1-MMP control of adipose tissue homeostasis can therefore have significant clinical and pharmacological implications.

The cortical bone of *Mmp14*^{Y573D/Y573} mice shows a significant decrease in thickness, a phenotype similar to – if milder than – that caused by *Mmp14* deficiency. In contrast, the increased trabecular bone of *Mmp14*^{Y573D/Y573} mice contrasts with the severe osteopenia of *Mmp14*^{-/-} mice and mice with *Mmp14* knockout in uncommitted SSC (Holmbeck & al., 1999; Tang et al., 2013). This discrepancy between the phenotypic effects of the MT1-MMP Y573D mutation and *Mmp14* deficiency suggests that the proteolytic and signaling functions of MT1-MMP can have opposing roles in bone physiology, and that a balance between the two functions is required for tissue homeostasis. Deletion of the gene abrogates both functions, whereas the MT1-MMP Y573D mutation only affects signaling, altering the balance between ECM proteolysis and intracellular signaling. Moreover, it should be noted again that the bone phenotype of the global or conditional *Mmp14* knockout in SSC can only be observed within the first two-three months of age, whereas the bone abnormalities of *Mmp14*^{Y573D/Y573} mice become apparent in animals older than two months. It is possible that the proteolytic and signaling functions of MT1-MMP play different roles in bone modeling (postnatal development) and remodeling (adult life), respectively.

Consistent with their respective phenotypes, the BM-SSC of *Mmp14*^{Y573D/Y573D} mice show increased osteoblast differentiation and decreased chondrocyte and adipocyte differentiation. Our finding that the bone and adipose tissue phenotypes can be rescued by *Mmp14*^{wt/wt} BM transplant shows that the *in vivo* effects of the MT1-MMP Y573D mutation result from dysregulation of SSC differentiation. Several considerations can explain the failure of *Mmp14*^{Y573D/Y573D} BM to transfer the mutant phenotypes to *Mmp14*^{wt/wt} mice, as well as the incapacity of *Mmp14*^{wt/wt} BM to rescue the cartilage phenotype of *Mmp14*^{Y573D/Y573D} mice. *Mmp14*^{Y573D/Y573D} SSC have significantly reduced proliferation and increased apoptosis relative to *Mmp14*^{wt/wt} SSC (Figures 10A–10C). We examined the phenotypes of the transplanted mice 2 months after the transplant. While hematopoietic cells from *Mmp14*^{Y573D/Y573D} mice were able to efficiently repopulate the BM of wt mice – indeed, we found no peripheral blood abnormalities in *Mmp14*^{Y573D/Y573D} mice – *Mmp14*^{Y573D/Y573D} SSC might have required a longer time than wt cells for the phenotypic effects to become apparent. Similarly, BM transplant did not affect the cortical bone phenotype of *Mmp14*^{Y573D/Y573D} mice. Cortical bone has a much slower turnover than trabecular bone (Clarke, 2008); therefore a longer time is required for its homeostasis to be altered. The failure of our BM transplant experiments to affect the articular cartilage phenotype is consistent with the absence of vascularization of this tissue. Indeed, no attempts at treating joint cartilage diseases by systemic stem cell administration have thus far been effective (Jevotovsky et al., 2018).

MT1-MMP is constitutively expressed in SSC and its levels are differentially modulated during osteogenic vs. chondrogenic/adipogenic differentiation (Y. Tang et al., 2013). The MT1-MMP Y573D mutation and *Mmp14* deficiency have opposing effects on SSC differentiation *in vitro* (Table 1). *Mmp14* knockout in uncommitted SSC has no effect on their differentiation in 2D culture; however, it causes decreased osteogenesis and increased chondro- and adipogenesis in 3D collagen gel (Y. Tang et al., 2013). In contrast, in 2D culture MT1-MMP Y573D expression upregulates SSC differentiation into osteoblasts and downregulates chondrocyte and adipocyte differentiation (Figures 10F and 10G). While the *in vitro* differentiation of *Mmp14*^{Y573D/Y573D} SSC and SSC with conditional *Mmp14* knockout is consistent with the phenotypes of the respective mice, both mutations fail to fully recapitulate the bone, cartilage and fat abnormalities of the global *Mmp14*^{-/-} mouse, which has osteopenia, lipodystrophy and arthritis (Table 1). These discrepancies indicate that MT1-MMP controls SSC differentiation by both proteolytic and non-proteolytic mechanisms, and the balance of these two functions is required for normal differentiation. MT1-MMP-mediated ECM degradation modulates mechanosignaling that controls gene expression during SSC differentiation into osteoblasts, and conditional *Mmp14* deficiency in SSC blocks osteogenesis and causes severe osteopenia (Tang et al., 2013). Normal SSC differentiation requires the concerted action of ECM remodeling and intracellular signaling, cell functions modulated by the extracellular environment. *In vitro*, in the presence of abundant ECM – such as in 3D collagen gel culture (Tang et al., 2013) – the proteolytic activity of MT1-MMP is indispensable. Conversely, in the presence of relatively low amounts of ECM – such as in 2D culture – the role of intracellular signaling becomes prevalent. *In vivo*, cell differentiation in the stem cell niche,

tissue/organ development and remodeling have different proteolytic and signaling requirements, which are spatially and temporally modulated.

The relative contribution of proteolysis and signaling to MT1-MMP function is also coordinated by extracellular ligands that can inhibit extracellular MT1-MMP proteolytic activity and activate intracellular signaling. This hypothesis is supported by our finding that TIMP-2 binding to MT1-MMP activates ERK1/2 and Akt signaling (D'Alessio et al., 2008; Valacca et al., 2015), as well as by the observation that in the mouse embryo MT1-MMP is temporally and spatially co-expressed with TIMP-2 in the developing skeleton (Apte et al., 1997; Kinoh et al., 1996). *TIMP-2*^{-/-} mice do not display the severe phenotype of *Mmp14*^{-/-} mice (Wang et al., 2000). We speculate that in these mice signaling can be activated by MT1-MMP binding of TIMP-3 or TIMP-4, as well as a variety of extracellular and transmembrane proteins, including integrins and CD44, that physiologically interact with the MT1-MMP ectodomains (Mori et al., 2002; Zhao et al., 2004).

Thus, the loss of signaling function caused by the Y573D substitution (D'Alessio et al., 2008; Valacca et al., 2015) (Figure 2E) can be at the basis of the defects in SSC differentiation and the consequent phenotypes of the *Mmp14*^{Y573D/Y573D} mouse. Studies by other groups, as well as our own (unpublished), have shown that, although ERK1/2 signaling is important for osteoblast differentiation (Miraoui et al., 2009; Wu et al., 2015; Xiao et al., 2002), chronic inhibition of ERK1/2 activation results in increased SSC differentiation into osteoblasts (Ge et al., 2007; Higuchi et al., 2002; Nakayama et al., 2003; Schindeler and Little, 2006; Zhang et al., 2012); conversely, inhibition of PI3K/Akt signaling blocks adipo- and chondrogenesis (J. E. Kim and Chen, 2004; Lee et al., 2015; Li and Dong, 2016; Yang et al., 2011). Similarly, the genetic deficiency of Akt (Akt1 and Akt2 double knockout) or ERK1/2 in the mouse results in decreased adiposity and impaired adipogenesis. Conversely, Akt deficiency and conditional knockout of ERK1/2 in osteoprogenitors causes impaired bone development and severe osteopenia (Bost et al., 2005; Cho et al., 2001; Kim et al., 2019; Peng et al., 2003).

The molecular mechanism that relays signaling from the Y573 residue of the MT1-MMP cytoplasmic tail to the Ras-ERK1/2 and Ras-Akt pathways (D'Alessio et al., 2008; Valacca et al., 2015), remains to be investigated. The adaptor protein p130Cas, which binds to the cytoplasmic tail of MT1-MMP by a mechanism involving Y573 (Gonzalo et al., 2010; Wang and McNiven, 2012), recruits Src and/or FAK, which activate Ras (Bunda et al., 2014; Schlaepfer and Hunter, 1997). We speculate that TIMP-2 binding to MT1-MMP triggers the assembly of the p130Cas/Src/FAK complex at the MT1-MMP tail, and that this effect is abrogated by the Y573D substitution, which thus prevents the downstream activation of ERK1/2 and AKT signaling. In addition, Y573 could control intracellular signaling by modulating cytoplasmic tail interactions with a variety of transmembrane or membrane-bound proteins including caveolin-1 (Annabi et al., 2001; Galvez et al., 2002, 2004; Labrecque et al., 2004) and β 1 integrins or growth factor receptors (Langlois et al., 2007). The cytoplasmic tail of MT1-MMP also controls energy production by activating hypoxia-inducible factor-1 (HIF-1) by a non-proteolytic mechanism (Sakamoto and Seiki, 2010).

In conclusion, our findings provide the first *in vivo* evidence for an important role of MT1-MMP-mediated, proteolysis-independent signaling in postnatal development and tissue homeostasis. Understanding the relative contribution of the proteolytic and signaling functions of MT1-MMP to the control of metabolic processes that affect a variety of tissues and organs will require the development of additional genetically engineered mouse models, as well as the molecular dissection of extracellular and intracellular components of the MT1-MMP signaling mechanism. The knowledge obtained from these studies can increase our understanding of the pathogenesis of important diseases that affect bone, cartilage, and adipose tissue homeostasis, such as osteopenia, osteoarthritis, and obesity, and potentially direct the design of pharmacological tools for their treatment.

Limitations of the Study

Our results show that the Y573D mutation in the MT1-MMP cytoplasmic tail abrogates TIMP-2-induced activation of Erk1/2 and Akt in SSC, suggesting that this effect is responsible for the defects in SSC differentiation and the development of the MT1-MMP Y573D mouse phenotypes. However, this mutation may also block or activate other signaling pathways. Future studies are warranted to understand the molecular mechanism by which the Y573 residue of the MT1-MMP cytoplasmic tail activates intracellular signaling that controls tissue homeostasis.

Resource Availability

Lead Contact

Paolo Mignatti, NYU School of Medicine, Department of Medicine, Division of Rheumatology, 301 East 17th Street, Suite 1612A, New York, NY 10003, USA. E-mail: mignap01@nyumc.org.

Materials Availability

The Mmp14^{Y573D/Y573D} mouse is available upon request to the lead contact.

Data and Code Availability

The RNA-seq raw data are available at <https://datadryad.org/stash/dataset/doi:10.5061/dryad.s4mw6m950>.

METHODS

All methods can be found in the accompanying [Transparent Methods supplemental file](#).

SUPPLEMENTAL INFORMATION

Supplemental Information can be found online at <https://doi.org/10.1016/j.isci.2020.101789>.

ACKNOWLEDGMENTS

This work was supported by the US National Institutes of Health (NIH) grants R01 CA136715, R01CA136715-05S1 and R21 AG033735 (to P.M.) and in part by R21 AR069240-01A1 (to S.A.). We gratefully acknowledge the precious collaboration of the Rodent Genetic Engineering, High-Throughput Biology Laboratory, Experimental Pathology Research Laboratory, and Genome Technology Center of NYU School of Medicine, which are partially supported by NIH grant P30CA016087 to the Laura and Isaac Perlmutter Cancer Center and the Shared Instrumentation Grant S10 OD021747, and the MicroCT Core of NYU College of Dentistry, supported by NIH grant S10 OD010751 to Dr. Nicola C. Partridge.

AUTHORS CONTRIBUTION

Conceptualization, P.M.; Methodology, P.M., M.A., X.Z., B.B.D., S.Y. and S.A.; Validation, P.M., M.A.; Formal Analysis: P.M., M.A. and C.L.; Investigation, M.A., C.L., X.Z., T.H, C.A., C.V., S.Z., S.M., E.V., Q.Y., V.K. and S.Y.; Data Curation, P.M.; Writing – Original Draft, P.M.; Writing – Review & Editing, P.M., M.A., S.Y. and S.A.; Visualization, P.M., M.A. and S.A.; Supervision, P.M. and M.A.; Project Administration, P.M.; Funding Acquisition, P.M. and S.A.

DECLARATION OF INTERESTS

The authors declare no competing interests.

Received: May 19, 2020

Revised: August 31, 2020

Accepted: November 6, 2020

Published: December 18, 2020

REFERENCES

- Annabi, B., Lachambre, M., Bousquet-Gagnon, N., Page, M., Gingras, D., and Beliveau, R. (2001). Localization of membrane-type 1 matrix metalloproteinase in caveolae membrane domains. *Biochem. J.* 353 (Pt 3), 547–553.
- Apte, S.S., Fukai, N., Beier, D.R., and Olsen, B.R. (1997). The matrix metalloproteinase-14 (MMP-14) gene is structurally distinct from other MMP genes and is co-expressed with the TIMP-2 gene during mouse embryogenesis. *J. Biol. Chem.* 272 (41), 25511–25517.
- Bost, F., Aouadi, M., Caron, L., Even, P., Belmonte, N., Prot, M., Dani, C., Hofman, P., Pages, G., Pouyssegur, J., et al. (2005). The extracellular signal-regulated kinase isoform ERK1 is specifically required for in vitro and in vivo adipogenesis. *Diabetes* 54, 402–411.
- Bunda, S., Heir, P., Srikumar, T., Cook, J.D., Burrell, K., Kano, Y., Lee, J.E., Zadeh, G., Raught, B., and Ohh, M. (2014). Src promotes GTPase activity of Ras via tyrosine 32 phosphorylation. *Proc. Natl. Acad. Sci. U S A* 111, E3785–E3794.
- Chan, K.M., Wong, H.L., Jin, G., Liu, B., Cao, R., Cao, Y., Lehti, K., Tryggvason, K., and Zhou, Z. (2012). MT1-MMP inactivates ADAM9 to regulate FGFR2 signaling and calvarial osteogenesis. *Dev. Cell* 22 (6), 1176–1190.
- Cho, H., Thorvaldsen, J.L., Chu, Q., Feng, F., and Birnbaum, M.J. (2001). Akt1/PKBalpha is required for normal growth but dispensable for maintenance of glucose homeostasis in mice. *J. Biol. Chem.* 276, 38349–38352.
- Chun, T.H., Hotary, K.B., Sabeh, F., Saltiel, A.R., Allen, E.D., and Weiss, S.J. (2006). A pericellular collagenase directs the 3-dimensional development of white adipose tissue. *Cell* 125, 577–591.

Chun, T.H., and Inoue, M. (2014). 3-D adipocyte differentiation and peri-adipocyte collagen turnover. *Methods Enzymol.* 538, 15–34.

Chun, T.H., Inoue, M., Morisaki, H., Yamanaka, I., Miyamoto, Y., Okamura, T., Sato-Kusubata, K., and Weiss, S.J. (2010). Genetic link between obesity and MMP14-dependent adipogenic collagen turnover. *Diabetes* 59, 2484–2494.

Clarke, B. (2008). Normal bone anatomy and physiology. *Clin. J. Am. Soc. Nephrol.* 3(Suppl 3), S131–S139.

Conlon, R.A., Reaume, A.G., and Rossant, J. (1995). Notch1 is required for the coordinate segmentation of somites. *Development* 121 (5), 1533–1545.

Crossno, J.T., Jr., Majka, S.M., Grazia, T., Gill, R.G., and Klemm, D.J. (2006). Rosiglitazone promotes development of a novel adipocyte population from bone marrow-derived circulating progenitor cells. *J. Clin. Invest.* 116, 3220–3228.

D'Alessio, S., Ferrari, G., Cinnante, K., Scheerer, W., Galloway, A.C., Roses, D.F., Rozanov, D.V., Remacle, A.G., Oh, E.S., Shiryayev, S.A., et al. (2008). Tissue inhibitor of metalloproteinases-2 binding to membrane-type 1 matrix metalloproteinase induces MAPK activation and cell growth by a non-proteolytic mechanism. *J. Biol. Chem.* 283, 87–99.

Dreier, R., Grassel, S., Fuchs, S., Schaumburger, J., and Bruckner, P. (2004). Pro-MMP-9 is a specific macrophage product and is activated by osteoarthritic chondrocytes via MMP-3 or a MT1-MMP/MMP-13 cascade. *Exp. Cell Res.* 297 (2), 303–312.

Evans, B.R., Mosig, R.A., Lobl, M., Martignetti, C.R., Camacho, C., Grum-Tokars, V., Glucksman, M.J., and Martignetti, J.A. (2012). Mutation of membrane type-1 metalloproteinase, MT1-MMP, causes the multicentric osteolysis and arthritis disease Winchester syndrome. *Am. J. Hum. Genet.* 91 (3), 572–576.

Feinberg, T.Y., Rowe, R.G., Saunders, T.L., and Weiss, S.J. (2016). Functional roles of MMP14 and MMP15 in early postnatal mammary gland development. *Development* 143 (21), 3956–3968.

Fenech, M., Gavrilovic, J., Malcolm, P., Toms, A., and Turner, J. (2015a). The role of metalloproteinases and their tissue inhibitors in adipose tissue remodelling and whole-body lipid distribution: a cross-sectional clinical study. *Lancet* 385, S36.

Fenech, M., Gavrilovic, J., and Turner, J. (2015b). Effect of tissue inhibitor of metalloproteinases 3 on DLK1 shedding in cultured human pre-adipocytes and implications for adipose tissue remodelling. *Lancet* 385, S35.

Fu, H.L., Sohail, A., Valiathan, R.R., Wasinski, B.D., Kumarasiri, M., Mahasenan, K.V., Bernardo, M.M., Tokmina-Roszyk, D., Fields, G.B., Mobashery, S., and Fridman, R. (2013). Shedding of discoidin domain receptor 1 by membrane-type matrix metalloproteinases. *J. Biol. Chem.* 288, 12114–12129.

Galvez, B.G., Matias-Roman, S., Yanez-Mo, M., Sanchez-Madrid, F., and Arroyo, A.G. (2002). ECM regulates MT1-MMP localization with beta1

or alphavbeta3 integrins at distinct cell compartments modulating its internalization and activity on human endothelial cells. *J. Cell Biol.* 159, 509–521.

Galvez, B.G., Matias-Roman, S., Yanez-Mo, M., Vicente-Manzanares, M., Sanchez-Madrid, F., and Arroyo, A.G. (2004). Caveolae are a novel pathway for membrane-type 1 matrix metalloproteinase traffic in human endothelial cells. *Mol. Biol. Cell* 15 (2), 678–687.

Ge, C., Xiao, G., Jiang, D., and Franceschi, R.T. (2007). Critical role of the extracellular signal-regulated kinase-MAPK pathway in osteoblast differentiation and skeletal development. *J. Cell Biol.* 176, 709–718.

Geyer, M., Grassel, S., Straub, R.H., Schett, G., Dinsler, R., Grifka, J., Gay, S., Neumann, E., and Muller-Ladner, U. (2009). Differential transcriptome analysis of intraarticular lesional vs intact cartilage reveals new candidate genes in osteoarthritis pathophysiology. *Osteoarthritis Cartilage* 17 (3), 328–335.

Gonzalo, P., Guadamillas, M.C., Hernandez-Riquer, M.V., Pollan, A., Grande-Garcia, A., Bartolome, R.A., Vasanji, A., Ambrogio, C., Chiarle, R., Teixido, J., et al. (2010). MT1-MMP is required for myeloid cell fusion via regulation of Rac1 signaling. *Dev. Cell* 18 (1), 77–89.

Gupta, R.K., Mepani, R.J., Kleiner, S., Lo, J.C., Khandekar, M.J., Cohen, P., Frontini, A., Bhowmick, D.C., Ye, L., Cinti, S., and Spiegelman, B.M. (2012). Zfp423 expression identifies committed preadipocytes and localizes to adipose endothelial and perivascular cells. *Cell Metab.* 15 (2), 230–239.

Higuchi, C., Myoui, A., Hashimoto, N., Kuriyama, K., Yoshioka, K., Yoshikawa, H., and Itoh, K. (2002). Continuous inhibition of MAPK signaling promotes the early osteoblastic differentiation and mineralization of the extracellular matrix. *J. Bone Miner. Res.* 17 (10), 1785–1794.

Holmbeck, K., and al, e. (1999). MT1-MMP-deficient mice develop dwarfism, osteopenia, arthritis, and connective tissue disease due to inadequate collagen turnover. *Cell* 99, 81–92.

Holmbeck, K., Bianco, P., Caterina, J., Yamada, S., Kromer, M., Kuznetsov, S.A., Mankani, M., Gehron Robey, P., Robin Poole, A., Pidoux, I., et al. (1999). MT1-MMP-Deficient mice develop dwarfism, osteopenia, arthritis, and connective tissue disease due to inadequate collagen turnover. *Cell* 99, 81–92.

Itoh, Y. (2015). Membrane-type matrix metalloproteinases: their functions and regulations. *Matrix Biol.* 44–46, 207–223.

Jevotovsky, D.S., Alfonso, A.R., Einhorn, T.A., and Chiu, E.S. (2018). Osteoarthritis and stem cell therapy in humans: a systematic review. *Osteoarthritis Cartilage* 26 (6), 711–729.

Kajita, M., Itoh, Y., Chiba, T., Mori, H., Okada, A., Kinoh, H., and Seiki, M. (2001). Membrane-type 1 matrix metalloproteinase cleaves CD44 and promotes cell migration. *J. Cell Biol.* 153, 893–904.

Karlsson, C., Dehne, T., Lindahl, A., Brittberg, M., Pruss, A., Sittlinger, M., and Ringe, J. (2010). Genome-wide expression profiling reveals new

candidate genes associated with osteoarthritis. *Osteoarthritis Cartilage* 18 (4), 581–592.

Kevorkian, L., Young, D.A., Darrach, C., Donell, S.T., Shepstone, L., Porter, S., Brockbank, S.M., Edwards, D.R., Parker, A.E., and Clark, I.M. (2004). Expression profiling of metalloproteinases and their inhibitors in cartilage. *Arthritis Rheum.* 50, 131–141.

Kim, J.E., and Chen, J. (2004). Regulation of peroxisome proliferator-activated receptor-gamma activity by mammalian target of rapamycin and amino acids in adipogenesis. *Diabetes* 53, 2748–2756.

Kim, J.M., Yang, Y.S., Park, K.H., Oh, H., Greenblatt, M.B., and Shim, J.H. (2019). The ERK MAPK pathway is essential for skeletal development and homeostasis. *Int. J. Mol. Sci.* 20 (8), 1803.

Kinoh, H., Sato, H., Tsunozuka, Y., Takino, T., Kawashima, A., Okada, Y., and Seiki, M. (1996). MT-MMP, the cell surface activator of proMMP-2 (pro-gelatinase A), is expressed with its substrate in mouse tissue during embryogenesis. *J. Cell Sci.* 109 (Pt 5), 953–959.

Labrecque, L., Nyalendo, C., Langlois, S., Durocher, Y., Roghi, C., Murphy, G., Gingras, D., and Beliveau, R. (2004). Src-mediated tyrosine phosphorylation of caveolin-1 induces its association with membrane type 1 matrix metalloproteinase. *J. Biol. Chem.* 279, 52132–52140.

Lagoutte, E., Villeneuve, C., Lafanechere, L., Wells, C.M., Jones, G.E., Chavrier, P., and Rosse, C. (2016). LIMK regulates tumor cell invasion and matrix degradation through tyrosine phosphorylation of MT1-MMP. *Sci. Rep.* 6, 24925.

Langlois, S., Nyalendo, C., Di Tomasso, G., Labrecque, L., Roghi, C., Murphy, G., Gingras, D., and Beliveau, R. (2007). Membrane-type 1 matrix metalloproteinase stimulates cell migration through epidermal growth factor receptor transactivation. *Mol. Cancer Res.* 5, 569–583.

Lee, N., Kim, I., Park, S., Han, D., Ha, S., Kwon, M., Kim, J., Byun, S.H., Oh, W., Jeon, H.B., et al. (2015). Creatine inhibits adipogenesis by downregulating insulin-induced activation of the phosphatidylinositol 3-kinase signaling pathway. *Stem Cells Dev.* 24 (8), 983–994.

Li, J., and Dong, S. (2016). The signaling pathways involved in chondrocyte differentiation and hypertrophic differentiation. *Stem Cells Int.* 2016, 2470351.

Miraoui, H., Oudina, K., Petite, H., Tanimoto, Y., Moriyama, K., and Marie, P.J. (2009). Fibroblast growth factor receptor 2 promotes osteogenic differentiation in mesenchymal cells via ERK1/2 and protein kinase C signaling. *J. Biol. Chem.* 284, 4897–4904.

Mori, H., Bhat, R., Bruni-Cardoso, A., Chen, E.I., Jorgens, D.M., Coutinho, K., Louie, K., Bowen, B.B., Inman, J.L., Tecca, V., et al. (2016). New insight into the role of MMP14 in metabolic balance. *PeerJ* 4, e2142.

Mori, H., Tomari, T., Koshikawa, N., Kajita, M., Itoh, Y., Sato, H., Tojo, H., Yana, I., and Seiki, M. (2002). CD44 directs membrane-type 1 matrix metalloproteinase to lamellipodia by associating

with its hemopexin-like domain. *Embo J.* 21 (15), 3949–3959.

Nakayama, K., Tamura, Y., Suzawa, M., Harada, S., Fukumoto, S., Kato, M., Miyazono, K., Rodan, G.A., Takeuchi, Y., and Fujita, T. (2003). Receptor tyrosine kinases inhibit bone morphogenetic protein-Smad responsive promoter activity and differentiation of murine MC3T3-E1 osteoblast-like cells. *J. Bone Miner. Res.* 18 (5), 827–835.

Nyalendo, C., Michaud, M., Beaulieu, E., Roghi, C., Murphy, G., Gingras, D., and Beliveau, R. (2007). Src-dependent phosphorylation of membrane type I matrix metalloproteinase on cytoplasmic tyrosine 573: role in endothelial and tumor cell migration. *J. Biol. Chem.* 282, 15690–15699.

Peng, X.D., Xu, P.Z., Chen, M.L., Hahn-Windgassen, A., Skeen, J., Jacobs, J., Sundararajan, D., Chen, W.S., Crawford, S.E., Coleman, K.G., and Hay, N. (2003). Dwarfism, impaired skin development, skeletal muscle atrophy, delayed bone development, and impeded adipogenesis in mice lacking Akt1 and Akt2. *Genes Dev.* 17 (11), 1352–1365.

Protin, U., Schweighoffer, T., Jochum, W., and Hilberg, F. (1999). CD44-deficient mice develop normally with changes in subpopulations and recirculation of lymphocyte subsets. *J. Immunol.* 163, 4917–4923.

Rozanov, D.V., Deryugina, E.I., Ratnikov, B.I., Monosov, E.Z., Marchenko, G.N., Quigley, J.P., and Strongin, A.Y. (2001). Mutation analysis of membrane type-1 matrix metalloproteinase (MT1-MMP). The role of the cytoplasmic tail Cys(574), the active site Glu(240), and furin cleavage motifs in oligomerization, processing, and self-proteolysis of MT1-MMP expressed in breast carcinoma cells. *J. Biol. Chem.* 276, 25705–25714.

Sakamoto, T., and Seiki, M. (2009). Cytoplasmic tail of MT1-MMP regulates macrophage motility independently from its protease activity. *Genes Cells* 14 (5), 617–626.

Sakamoto, T., and Seiki, M. (2010). A membrane protease regulates energy production in macrophages by activating hypoxia-inducible factor-1 via a non-proteolytic mechanism. *J. Biol. Chem.* 285, 29951–29964.

Sakr, M., Li, X.Y., Sabeh, F., Feinberg, T.Y., Tesmer, J.J.G., Tang, Y., and Weiss, S.J. (2018). Tracking the Cartoon mouse phenotype: hemopexin domain-dependent regulation of MT1-MMP pericellular collagenolytic activity. *J. Biol. Chem.* 293, 8113–8127.

Sato, H., Takino, T., Okada, Y., Cao, J., Shinagawa, A., Yamamoto, E., and Seiki, M.

(1994). A matrix metalloproteinase expressed on the surface of invasive tumour cells [see comments]. *Nature* 370, 61–65.

Schindeler, A., and Little, D.G. (2006). Ras-MAPK signaling in osteogenic differentiation: friend or foe? *J. Bone Miner. Res.* 21 (9), 1331–1338.

Schlaepfer, D.D., and Hunter, T. (1997). Focal adhesion kinase overexpression enhances ras-dependent integrin signaling to ERK2/mitogen-activated protein kinase through interactions with and activation of c-Src. *J. Biol. Chem.* 272, 13189–13195.

Shimizu-Hirota, R., Xiong, W., Baxter, B.T., Kunkel, S.L., Maillard, I., Chen, X.W., Sabeh, F., Liu, R., Li, X.Y., and Weiss, S.J. (2012). MT1-MMP regulates the PI3Kdelta.Mi-2/NuRD-dependent control of macrophage immune function. *Genes Dev.* 26 (4), 395–413.

Tang, Q.Q., Otto, T.C., and Lane, M.D. (2004). Commitment of C3H10T1/2 pluripotent stem cells to the adipocyte lineage. *Proc. Natl. Acad. Sci. U S A* 101, 9607–9611.

Tang, Y., Rowe, R.G., Botvinick, E.L., Kurup, A., Putnam, A.J., Seiki, M., Weaver, V.M., Keller, E.T., Goldstein, S., Dai, J., et al. (2013). MT1-MMP-dependent control of skeletal stem cell commitment via a beta1-integrin/YAP/TAZ signaling axis. *Dev. Cell* 25 (4), 402–416.

Tchetina, E.V., Squires, G., and Poole, A.R. (2005). Increased type II collagen degradation and very early focal cartilage degeneration is associated with upregulation of chondrocyte differentiation related genes in early human articular cartilage lesions. *J. Rheumatol.* 32, 876–886.

Tran, K.V., Gealekman, O., Frontini, A., Zingaretti, M.C., Morroni, M., Giordano, A., Smorlesi, A., Perugini, J., De Matteis, R., Sbarbati, A., et al. (2012). The vascular endothelium of the adipose tissue gives rise to both white and brown fat cells. *Cell Metab.* 15 (2), 222–229.

Uekita, T., Itoh, Y., Yana, I., Ohno, H., and Seiki, M. (2001). Cytoplasmic tail-dependent internalization of membrane-type 1 matrix metalloproteinase is important for its invasion-promoting activity. *J. Cell Biol.* 155, 1345–1356.

Valacca, C., Tassone, E., and Mignatti, P. (2015). TIMP-2 interaction with MT1-MMP activates the AKT pathway and protects tumor cells from apoptosis. *PLoS One* 10, e0136797.

Vogel, W.F., Aszodi, A., Alves, F., and Pawson, T. (2001). Discoidin domain receptor 1 tyrosine kinase has an essential role in mammary gland development. *Mol. Cell Biol.* 21 (8), 2906–2917.

Wang, Y., and McNiven, M.A. (2012). Invasive matrix degradation at focal adhesions occurs via protease recruitment by a FAK-p130Cas complex. *J. Cell Biol.* 196, 375–385.

Wang, Z., Juttermann, R., and Soloway, P.D. (2000). TIMP-2 is required for efficient activation of proMMP-2 in vivo. *J. Biol. Chem.* 275, 26411–26415.

Weskamp, G., Cai, H., Brodie, T.A., Higashiyama, S., Manova, K., Ludwig, T., and Blobel, C.P. (2002). Mice lacking the metalloprotease-disintegrin MDC9 (ADAM9) have no evident major abnormalities during development or adult life. *Mol. Cell Biol.* 22 (5), 1537–1544.

Wu, Y., Zhou, J., Li, Y., Zhou, Y., Cui, Y., Yang, G., and Hong, Y. (2015). Rap1A regulates osteoblastic differentiation via the ERK and p38 mediated signaling. *PLoS One* 10, e0143777.

Xiao, G., Jiang, D., Gopalakrishnan, R., and Franceschi, R.T. (2002). Fibroblast growth factor 2 induction of the osteocalcin gene requires MAPK activity and phosphorylation of the osteoblast transcription factor, Cbfa1/Runx2. *J. Biol. Chem.* 277, 36181–36187.

Xu, X., Weinstein, M., Li, C., Naski, M., Cohen, R.I., Ornitz, D.M., Leder, P., and Deng, C. (1998). Fibroblast growth factor receptor 2 (FGFR2)-mediated reciprocal regulation loop between FGF8 and FGF10 is essential for limb induction. *Development* 125 (4), 753–765.

Yang, H.J., Xia, Y.Y., Wang, L., Liu, R., Goh, K.J., Ju, P.J., and Feng, Z.W. (2011). A novel role for neural cell adhesion molecule in modulating insulin signaling and adipocyte differentiation of mouse mesenchymal stem cells. *J. Cell Sci.* 124 (Pt 15), 2552–2560.

Zhang, M.Y., Ranch, D., Pereira, R.C., Armbrecht, H.J., Portale, A.A., and Perwad, F. (2012). Chronic inhibition of ERK1/2 signaling improves disordered bone and mineral metabolism in hypophosphatemic (Hyp) mice. *Endocrinology* 153 (4), 1806–1816.

Zhao, H., Bernardo, M.M., Osenkowski, P., Sohail, A., Pei, D., Nagase, H., Kashiwagi, M., Soloway, P.D., DeClerck, Y.A., and Fridman, R. (2004). Differential inhibition of membrane type 3 (MT3)-matrix metalloproteinase (MMP) and MT1-MMP by tissue inhibitor of metalloproteinase (TIMP)-2 and TIMP-3 regulates pro-MMP-2 activation. *J. Biol. Chem.* 279, 8592–8601.

Zhou, Z., Apte, S.S., Soininen, R., Cao, R., Baakli, G.Y., Rauser, R.W., Wang, J., Cao, Y., and Tryggvason, K. (2000). Impaired endochondral ossification and angiogenesis in mice deficient in membrane-type matrix metalloproteinase I. *Proc. Natl. Acad. Sci. U S A* 97, 4052–4057.

iScience, Volume 23

Supplemental Information

Membrane-type 1 Matrix Metalloproteinase

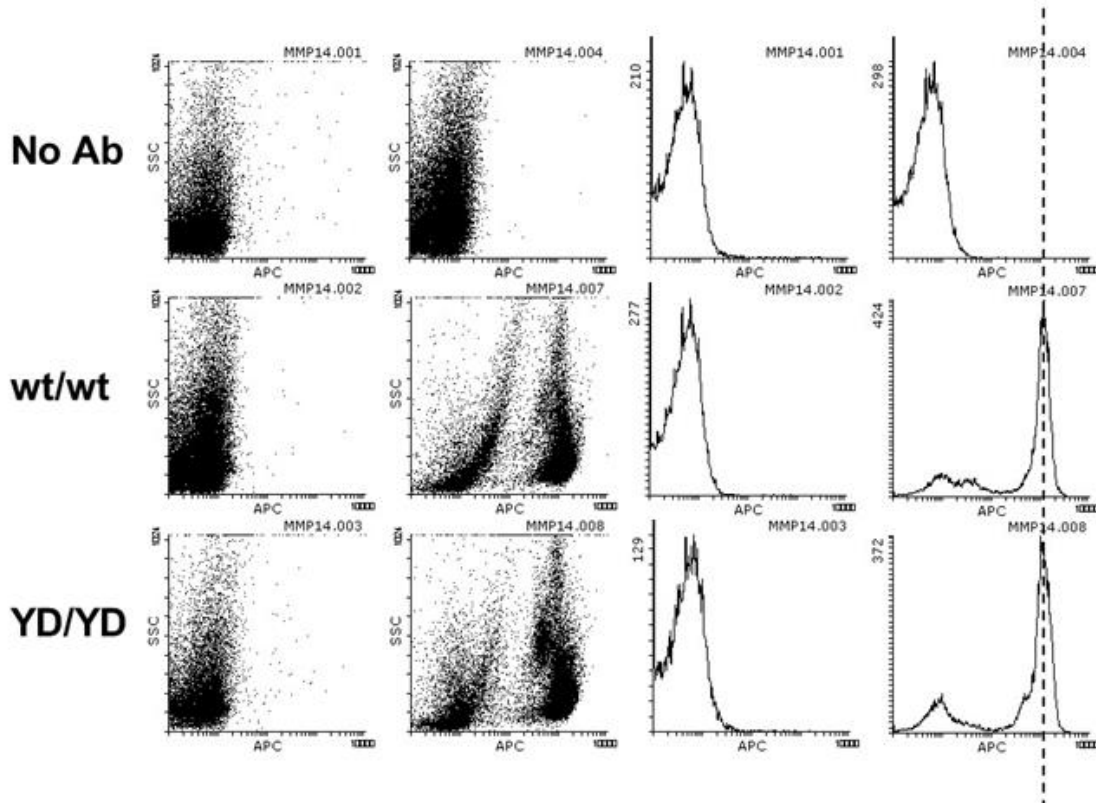
Modulates Tissue Homeostasis

by a Non-proteolytic Mechanism

Mukundan Attur, Cuijie Lu, Xiaodong Zhang, Tianzhen Han, Cassidy Alexandre, Cristina Valacca, Shuai Zheng, Sarina Meikle, Branka Brukner Dabovic, Evelyne Tassone, Qing Yang, Victoria Kolupaeva, Shoshana Yakar, Steven Abramson, and Paolo Mignatti

Figure S1

A



B

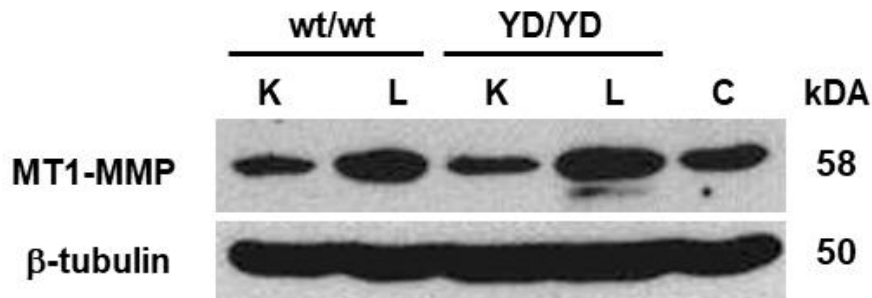


Figure S1. Analysis of wt MT1-MMP and MT1-MMP Y573D expression *in vivo*. Related to Figures 2 and 3. **A.** Flow cytometric analysis of MT1-MMP on the surface of peripheral blood monocytes from *Mmp14^{wt/wt}* (wt/wt) and *Mmp14^{Y573D/Y573D}* (YD/YD) 2-month old male mice. **B.** Western blotting analysis of MT1-MMP in protein extracts of lungs (L) and kidneys (L) from 3-month old *Mmp14^{wt/wt}* (wt/wt) and *Mmp14^{Y573D/Y573D}* (YD/YD) male mice. Tissues from three littermates per genotype were pooled for protein extraction.

Figure S2

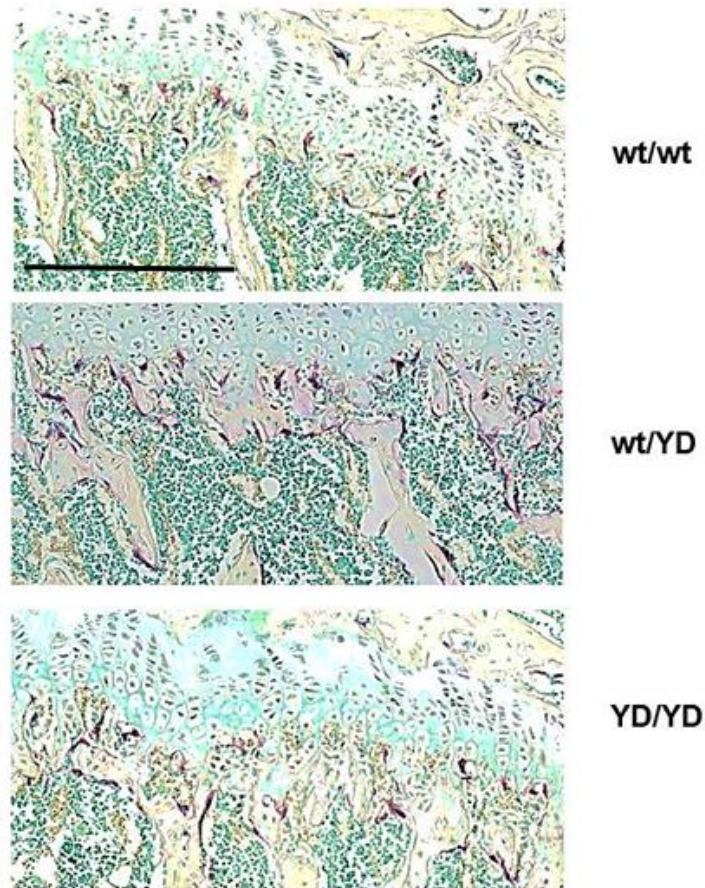


Figure S2. Analysis of osteoclasts in the trabecular bone of *Mmp14*^{wt/wt}, *Mmp14*^{wt/Y573D} and *Mmp14*^{Y573D/Y573D} mice. Related to figure 4. Tartrate-resistant acid phosphatase (TRAP) staining of osteoclasts (dark red cells) in sections of the femurs of *Mmp14*^{wt/wt} (wt/wt), *Mmp14*^{wt/Y573D} (wt/YD) and *Mmp14*^{Y573D/Y573D} (YD/YD) 2-month old male mice. Scale bar, 100 μ m.

Figure S3

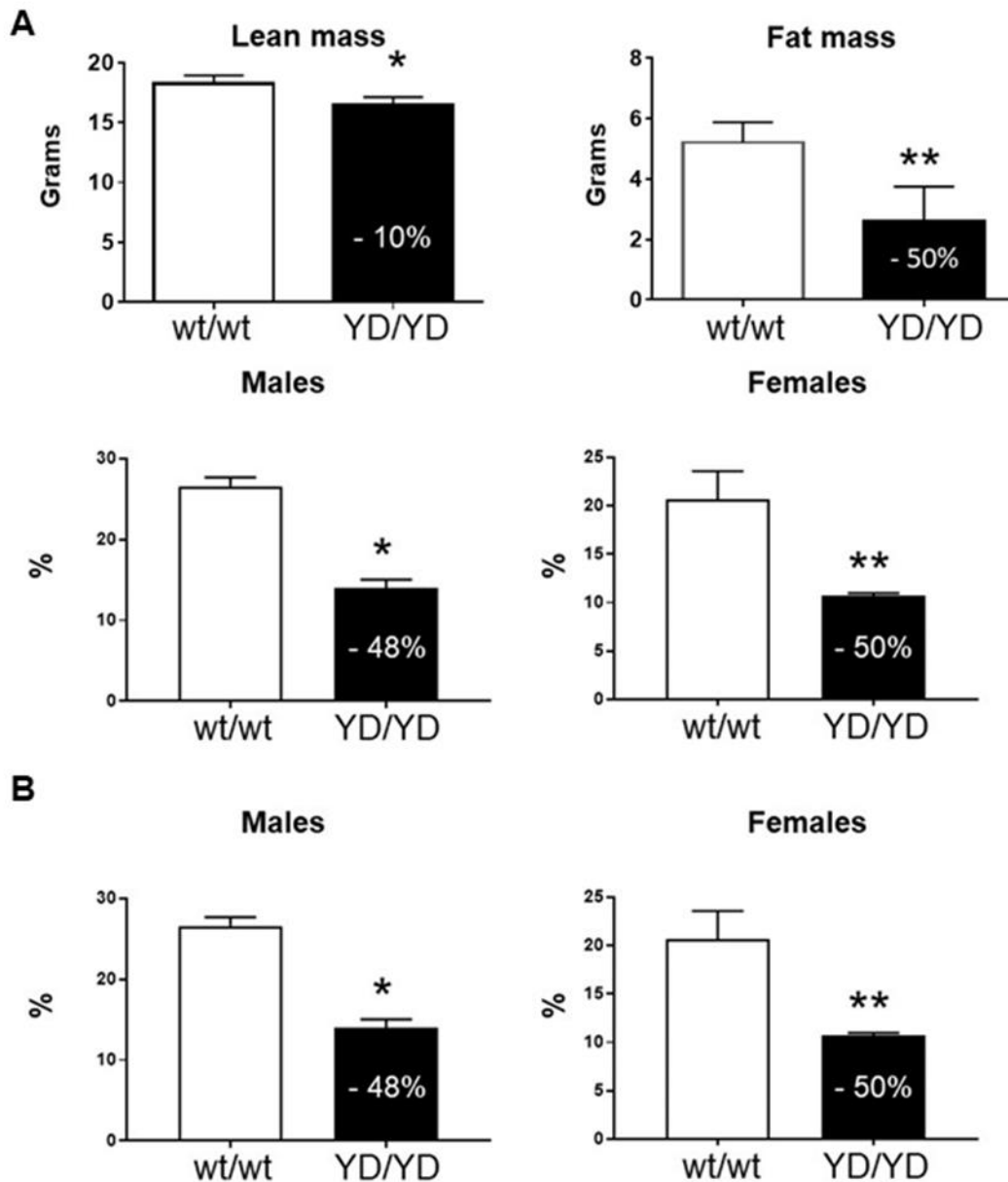


Figure S3. Analysis of adipose tissue in *Mmp14*^{wt/wt} and *Mmp14*^{Y573D/Y573D} mice. Related to Figures 7 and 8. A. DEXA scanning analysis of lean and fat body mass of 4-month old *Mmp14*^{wt/wt} (wt/wt; n = 10) and *Mmp14*^{Y573D/Y573D} (YD/YD; n = 10) female mice. Mean ± S.D. is shown. Statistically significant percent differences between the two genotypes are indicated in the closed bars. Upper panels: *: p = 0.0121; **: p = 0.0060; lower panels: *: p = 0.0093; **: p = 0.0124 by two-tailed Student's t test. **B.** DEXA scanning analysis of adipose tissue in 10-weeks old *Mmp14*^{wt/wt} (wt/wt; n = 10) and *Mmp14*^{Y573D/Y573D} (YD/YD; n = 10) male or female mice. Mean ± S.D. is shown; *: p = 0.0001; **: p = 0.0044 by two-tailed Student's t test. Statistically significant percent differences between the two genotypes are indicated in the closed bars in panels A and B.

Figure S4

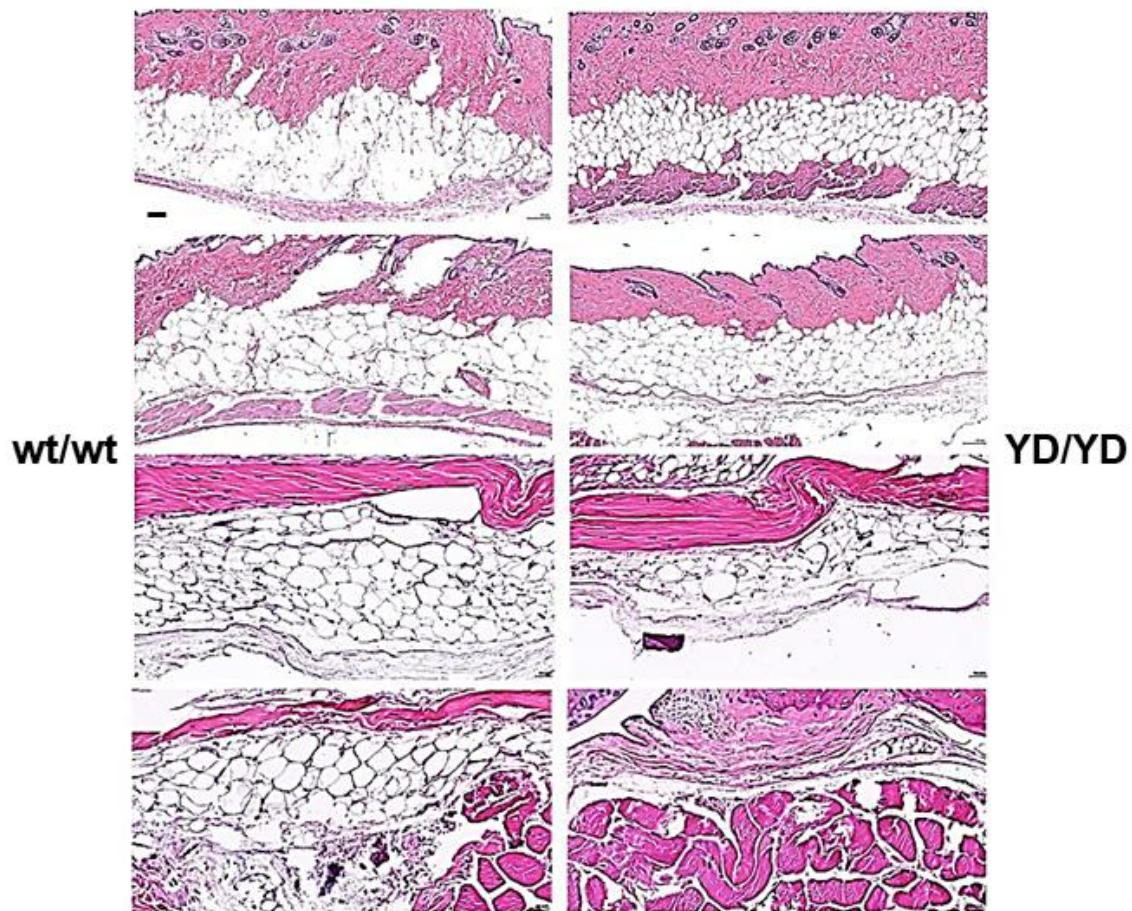


Figure S4. Analysis of subcutaneous fat in *Mmp14*^{wt/wt} and *Mmp14*^{Y573D/Y573D} mice. Related to Figures 7 and 8. Histological sections of subcutaneous fat in *Mmp14*^{wt/wt} (wt/wt; left column) and *Mmp14*^{Y573D/Y573D} 3-4 month old, male or female mice (YD/YD; right column). Age- and sex-matched mice are shown on the same row. H&E staining; scale bar, 100 μ m. *Mmp14*^{Y573D/Y573D} mice show hypotrophic adipocytes and reduced thickness of the adipose layer.

Figure S5

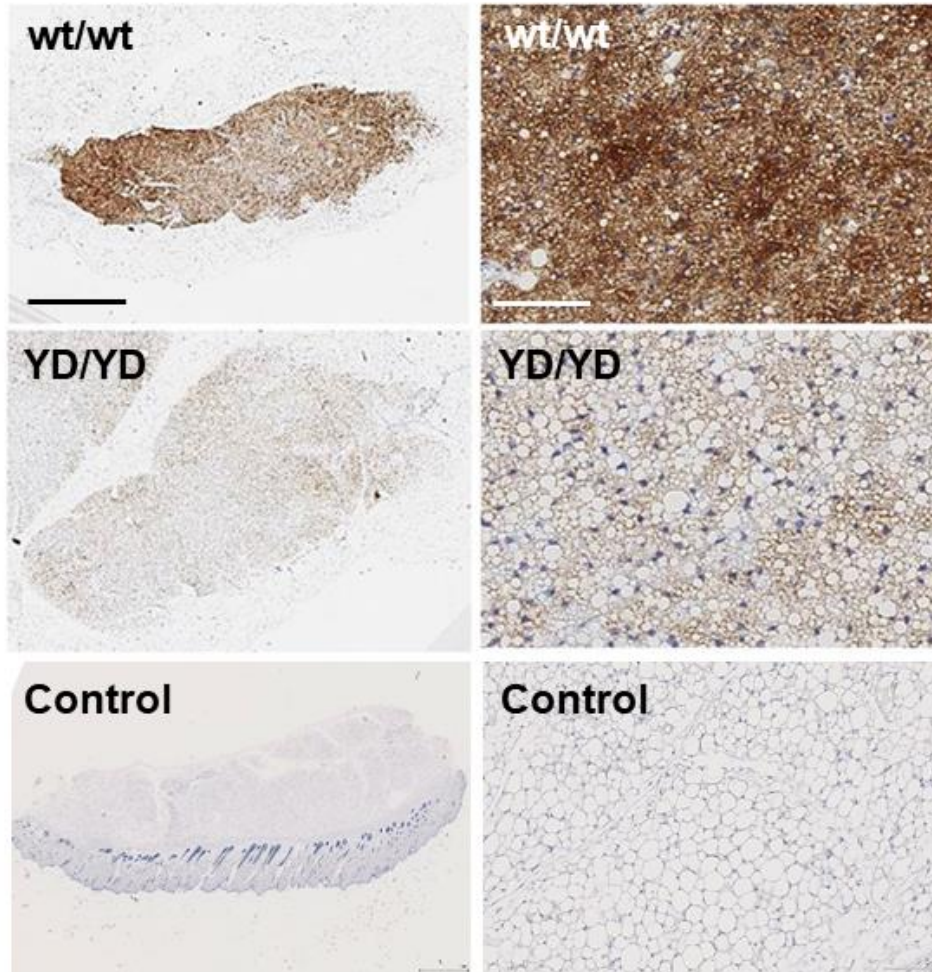


Figure S5. Analysis of brown fat in *Mmp14*^{wt/wt} and *Mmp14*^{Y573D/Y573D} mice. Related to Figures 7 and 8. Histological sections of brown fat from *Mmp14*^{wt/wt} (wt/wt) and *Mmp14*^{Y573D/Y573D} 3-month old male mice (YD/YD), immunostained with antibody to UCP-1. Control: section of subcutaneous white fat from a wt mouse, immunostained with UCP-1 antibody using the same protocol as for the brown fat sections. Scale bar: left panels, 1 mm; right panels: 100 μm.

Figure S6

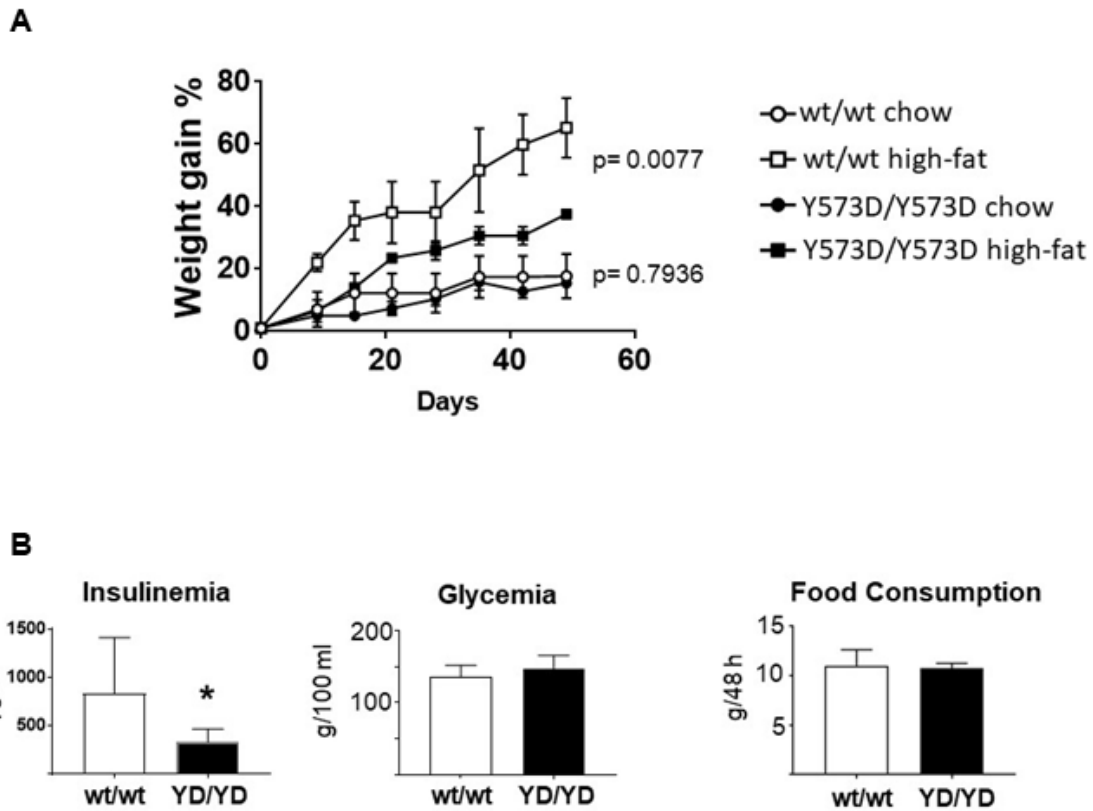


Figure S6. Metabolic analysis of *Mmp14*^{wt/wt} and *Mmp14*^{Y573D/Y573D} mice. Related to Figures 7 and 8. **A.** Weight gain analysis of 6-week old *Mmp14*^{wt/wt} (wt/wt; n = 2) and *Mmp14*^{Y573D/Y573D} (YD/YD; n = 2) male littermates fed normal chow or a high-fat diet. The regression curves and statistical significance of their differences were calculated with GraphPad Prism, Version 7.05. **B.** Fasting serum levels of insulin and glucose in, and food consumption by, 4-month old *Mmp14*^{wt/wt} (wt/wt; n = 8) and *Mmp14*^{Y573D/Y573D} (YD/YD; n = 8) male mice. Mean \pm S.D. is shown; *: $p = 0.0203$ by two-tailed Student's t test. The graph of insulinemia is the same as in Fig. S7, and is shown here for comparison with glycemia.

Fig. S7

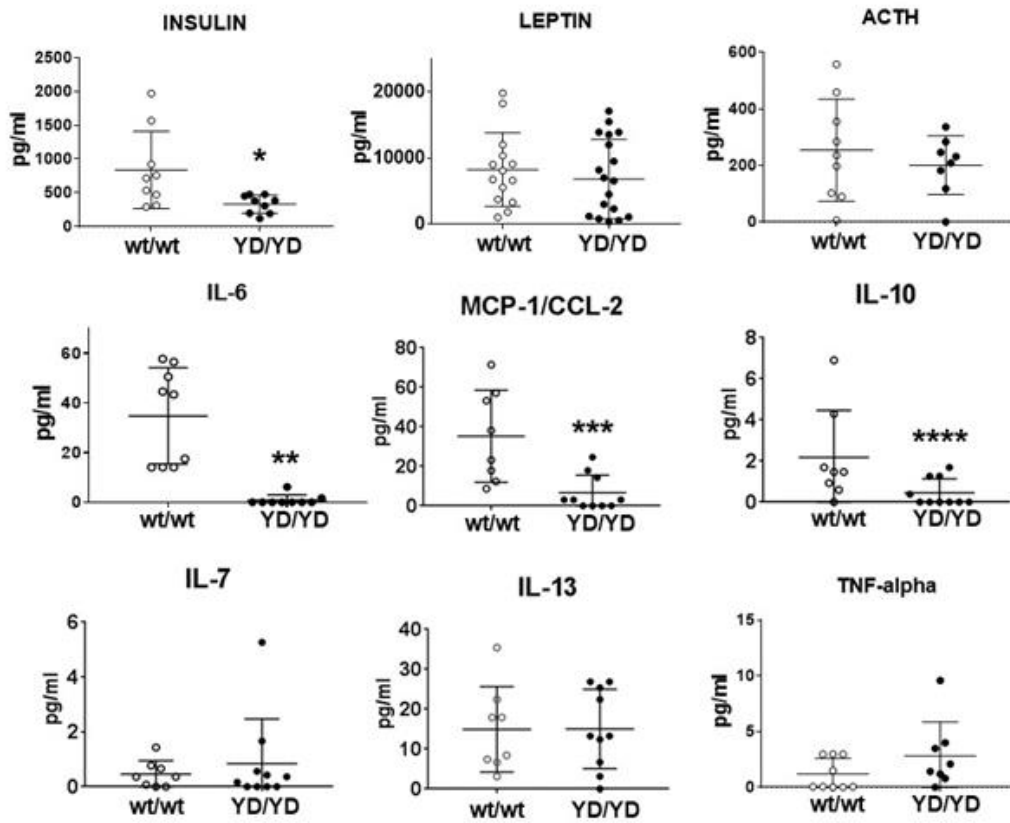
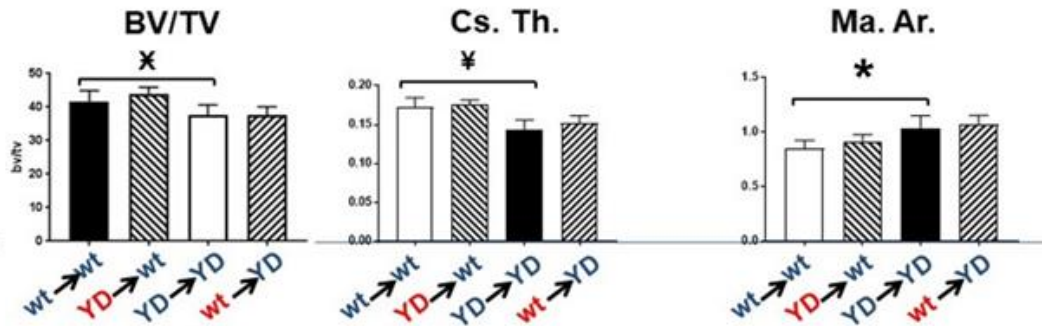


Figure S7. *Mmp14*^{Y573D/Y573D} mice have low levels of insulin and inflammatory cytokines. Related to Figures 7 and 8. Analysis of circulating hormones and cytokines in 4-month old *Mmp14*^{wt/wt} (wt/wt) and *Mmp14*^{Y573D/Y573D} (YD/YD) male mice. Mean \pm S.D. is shown; *: $p = 0.023$; **: $p = 0.0001$; ***: $p = 0.0024$; ****: $p = 0.0384$ by two-tailed Student's t test.

Figure S8

Cortical bone



Trabecular bone

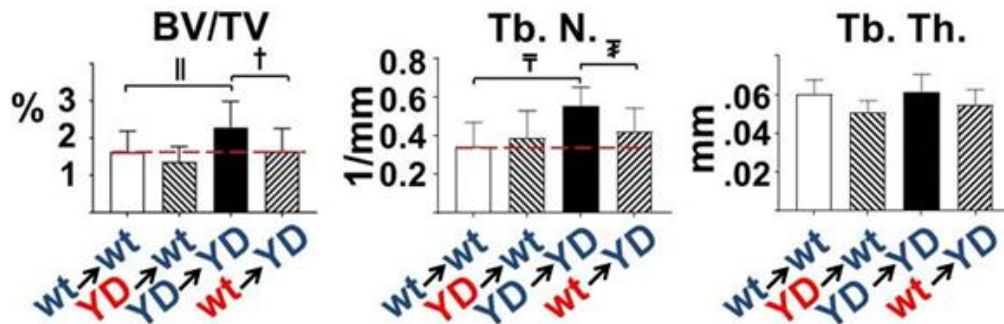


Figure S8. BM transplant rescues the trabecular bone phenotype of MT1-MMP Y573D mice. Related Figure 11. Quantitative microCT analysis of cortical and trabecular bone of 5-month old mice (n = 9-11/group) transplanted as described in the legend to Fig. 11. The mice (n = 9-11/group) were transplanted at 5 months of age, and analyzed 2 months later. The results are comparable to those presented in Fig. 11. Mean ± S.D. is shown; X: p = 0.002; ¥: p = 0.0002; *: p = 0.005; ||: p = 0.0323; †: p = 0.0362; ¯: p = 0.0025; ¯: p = 0.0162 by two-tailed Student's t test.

Figure S9

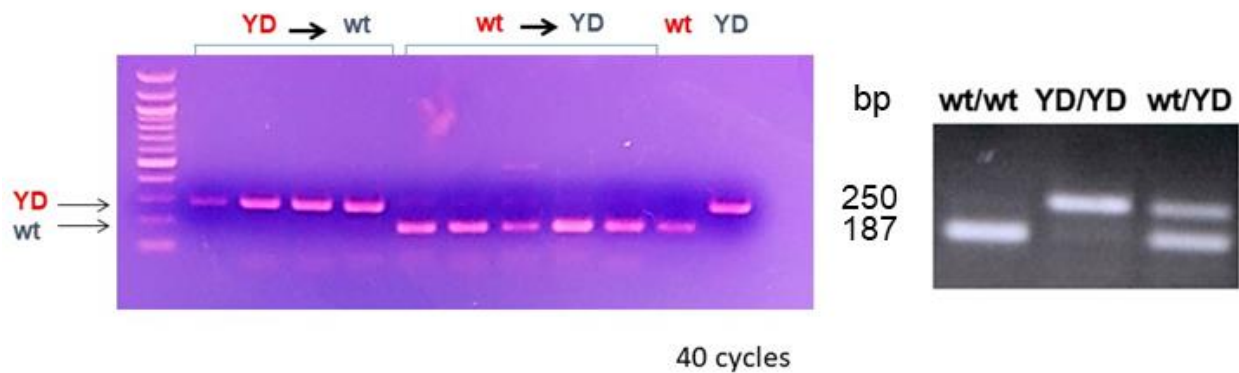


Figure S9. Transplanted bone marrow from *Mmp14^{wt/wt}* mice replaces the bone marrow of *Mmp14^{Y573D/Y573D}* mice. Related to Figures 11 and 12. PCR genotyping of BM from mice transplanted with BM as indicated (YD►wt: *Mmp14^{wt/wt}* mice transplanted with BM from *Mmp14^{Y573D/Y573D}* mice; wt►YD: *Mmp14^{Y573D/Y573D}* mice transplanted with *Mmp14^{wt/wt}* BM). BM from non-transplanted *Mmp14^{wt/wt}* mice (wt) or *Mmp14^{Y573D/Y573D}* mice (YD) is shown as control. The PCR genotyping of non-transplanted mice with the three genotypes shown in the right panel is the same as shown in Figure 1 B, and is reported here to illustrate the expected pattern of BM with a mixed *Mmp14^{wt/wt}* and *Mmp14^{Y573D/Y573D}* genotype. The size of the amplicons is shown in base pairs (bp).

TRANSPARENT METHODS

Generation of MT1-MMP Y573D mice

To generate a mouse with the Y573D mutation in the MT1-MMP cytoplasmic tail we constructed a targeting vector as described in Figure 1 A. The construct was electroporated into W4 embryonic stem (ES) cells, followed by G418 and gancyclovir double selection. The W4 cells were provided to us by the Rodent Genetic Engineering of NYU School of Medicine, who carried out the blastocysts injections and subsequent procedures. Homologous recombination targeting events were identified in 8 ES cell colonies. Two of these, devoid of chromosome abnormalities by cytogenetic analysis, were used for injection into blastocysts of C57BL/6 mice (C57BL/6NTac; Taconic), and one gave germline transmission. Mice heterozygote for the mutation (*Mmp14*^{Y573/wt}), identified by PCR analysis with primers flanking the *LoxP* sites (Fig. 1 A), were crossed with Rosa26Cre Deleter mice (C57BL/6NTac-Gt(*ROSA*)26So^{rtm16(cre)Arte}; Taconic) to excise the neo cassette. Homozygote *Mmp*^{Y573D/Y573D} mice were generated by heterozygote mating, and crossed back to wt C57BL/6 mice to remove the Cre recombinase gene. Sequencing of MT1-MMP cDNA from *Mmp*^{Y573D/Y573D} mouse tissue showed identity with wt MT1-MMP except for the Y573D mutation. Heterozygote mating produced wt, heterozygote and homozygote mice in the expected Mendelian ratios. The mice were genotyped by PCR using the same primers flanking the *loxP* sites, which afford identification of the three genotypes (Fig. 1 B). The sequences of these primers are:

Forward: GCT TGG CAG AGT GGA AAG AC

Reverse: GGG CAG TGA TGA AGG TGA GT

All the animal studies were carried out in strict accordance with the recommendations in the Guide for the Care and Use of Laboratory Animals of the National Institutes of Health. All procedures were approved by the Institutional Animal Care and Use Committee (IACUC) of New York University School of Medicine.

Preparation of bone sections for histological analysis

Mice were euthanized by carbon dioxide narcosis, and the entire limb was removed by excising the femur at the joint in the upper extremity of the hip socket and the tibia at the ankle. The remaining skin was peeled off and the connective tissue removed. Limbs were placed in cold 4% paraformaldehyde for 24 h, and decalcified by incubation with Immunocaltm (Decal Corporation, Tallman, NY) or 10% EDTA for 72 h, with the decalcifying solution replaced with fresh one daily. Following decalcification, the limbs were rinsed 4 times for 30 min in PBS, 30 min in 0.85% NaCl and dehydrated for 30 min in 50% and 70% ethanol. Samples were embedded in paraffin blocks and sequentially cut into 5- μ m sections, mounted onto slides and stained with the indicated reagents.

Micro-computed tomography (CT)

Micro-CT was performed according to published guidelines (Bouxsein et al., 2010). Bones were scanned using a high-resolution SkyScan micro-CT system (SkyScan 1172, Kontich, Belgium). Images were acquired using a 10 MP digital detector, 10W energy (70kV and 142 mA), and a 0.5-mm aluminum filter with a 9.7- μ m image voxel size. A fixed global threshold method was used based on the manufacturer's recommendations and preliminary studies, which showed that mineral variation between groups was not high enough to warrant adaptive thresholds. The cortical region of interest was selected as the 2.0-mm mid-diaphyseal region directly below the third trochanter. The trabecular bone was assessed as the 2.0-mm region at the distal femur metaphysis; measurements included the bone volume relative to the total volume (BV/TV), bone mineral density (BMD), trabecular number (Tb.N), trabecular spacing (Tb.Sp), and trabecular thickness (Tb.Th).

Immunohistochemistry

Paraffin-embedded specimens of brown adipose tissue (BAT) were cut and immunostained with antibody to uncoupling protein-1 UCP-1 (R&D Systems, cat. # MAB6158, Minneapolis, MN) at a concentration of 10 μ g/mL by personnel of the Experimental Pathology Core of NYU School of Medicine. The antibody was validated using, as a negative control, sections of subcutaneous WAT devoid of BAT (Fig. 7 – figure supplement 2).

Western blotting

Western blotting analysis was done as described (D'Alessio et al., 2008; Valacca, Tassone, & Mignatti, 2015) using the following antibodies and predetermined dilutions/concentrations. MT1-MMP antibody: Anti-MMP14 antibody [EP1264Y] rabbit mAb (Abcam, cat. # ab51074; Cambridge, MA), dilution: 1:5,000; phospho-ERK1/2 antibody: Phospho-p44/42 MAPK (Erk1/2) (Thr202/Tyr204) (197G2) Rabbit mAb (Cell Signaling Technology, cat. # 4377; Danvers, MA), dilution: 1:1,000; phospho-Akt antibody: Phospho-Akt (Ser473) (D9E) XP[®] Rabbit mAb (Cell Signaling Technology, cat. # 4060), dilution: 1:2,000; phospho-FAK antibodies: Phospho-FAK (Tyr861) Recombinant Rabbit Monoclonal Antibody (26H16L4) (Invitrogen, cat. # 700154), concentration: 2 µg/ml; or Phospho-FAK (Tyr397) Polyclonal Antibody (Life technology, cat. # 44-624G), dilution: 1,1000; total ERK1/2 antibody: p44/42 MAPK (Erk1/2) (137F5) Rabbit mAb (Cell Signaling Technology, cat. # 4695), dilution: 1:1,000; total Akt antibody: Akt (pan) (C67E7) Rabbit mAb (Cell Signaling Technologies, cat. # 4691), dilution: 1:1,000; total FAK antibody: FAK Antibody C20 (Santa Cruz Biotechnology, cat. # sc-558), dilution: 1:200; CD44 antibody: mouse monoclonal antibody to mouse CD44 (DSHB; cat. # 5D2-27-s), dilution: 0.2 – 0.5 µg/ml; and Cell Signaling CD44 Mouse mAb, (cat. # 156-3C11), dilution: 1:200; ADAM9 antibody: mouse anti-ADAM-9 monoclonal antibody (R&D Systems; cat. # MAB939); dilution: 5 µg /ml; DDR1 antibody: rabbit anti-DDR1 monoclonal antibody D1G6 (Cell Signaling Technology; cat. # 5583, dilution: 1:1,000; or Phospho-DDR1 (Tyr792) Antibody (Cell Signaling Technology; cat. #11994), dilution: 1:1,000; α-tubulin antibody: rabbit anti-tubulin monoclonal antibody 11H10 (Cell Signaling Technology; cat. #2125), dilution: 1:1,000; β-tubulin antibody: β-Tubulin Antibody #2146 (Cell Signaling Technology; cat. #21465), dilution: 1:1,000; lamin B antibody: goat anti-lamin B antibody B-20 (Santa Cruz; cat. # sc-6217); dilution: 1:1,000; rabbit IgG antibody: anti-rabbit IgG, HRP-linked antibody (Jackson ImmunoResearch; cat. # AB_10015289), dilution 1:10,000, or (Cell Signaling Technologies, cat. # 7074), dilution: 1:10,000; mouse IgG antibody: anti-mouse HRP-linked antibody (Jackson ImmunoResearch; cat. # AB_2307391), dilution 1:10,000.

Analysis of proMMP-2 activation by gelatin zymography

Confluent cells were incubated overnight with serum-free culture medium with or without addition of human recombinant MMP-2 (0.1 µg/ml; Anaspec, Fremont, CA). The conditioned medium was then treated with freshly prepared APMA solution (1 mM in DMSO; Sigma, St. Louis, MO) or DMSO as control, at 37° C degree for 1.5 h. Samples were analyzed as described [*Current Protocols in Immunology* 14.24.1-14.24.11, 2011] using precast SDS-polyacrilamide gels containing gelatin (Novex Zymogram Plus; ThermoFisher Scientific, Springfield, NJ).

Collagen degradation assay

Single cell degradation of fibrillar collagen was analyzed as described (Sakr et al., 2018), using rat tendon (Sigma-Aldrich, cat. # C7661) dissolved by us at 2.5 mg/ml in 0.1 M acetic acid or calf skin collagen (Sigma-Aldrich, cat. # C8919; 0.1% solution in 0.1 M acetic acid), both labeled with Alexa Fluor 488 (ThermoFisher Scientific). In a modification of this assay confluent cells were seeded onto Alexa Fluor 488 labeled fibrillar collagen in Dulbecco's Modified Minimal Essential Medium (DMEM) supplemented with 10% fetal calf serum (FCS) to permit cell attachment. After 24 h incubation at 37° C, the cell layer was washed three times with serum-free DMEM and incubation was continued in serum-free phenol red-free to preclude MMP inhibition by serum inhibitors and interference with fluorescence measurement by phenol red. The medium was removed at 24 h intervals, immediately analyzed for Alexa Fluor 488 fluorescence with a fluorescence microplate reader, and replaced with the same volume of medium. Medium incubated with the labeled collagen in the absence of cells was used as a blanc whose fluorescence readings were subtracted from the samples' readings at each time point. The time of the first addition of serum-, phenol red-free DMEM was considered as time 0.

Cell migration and collagen invasion assays

For migration and invasion assays the polycarbonate porous membranes of inserts of 24-well Transwell plates (Nunc, ThermoFisher Scientific, 8-µm pores, 0.47 cm² culture area) were coated with 50 µl of either PBS, for migration assays, or rat tendon (Sigma-Aldrich, cat. # C7661) dissolved by us at 2.5 mg/ml in 0.1 M acetic acid for invasion assays. After incubation at 37° C for 45 min and washing three times

with serum-free DMEM, $1.4 - 1.6 \times 10^4$ cells (corresponding to confluent cultures) the membranes were seeded into each insert in 100 μ l of DMEM supplemented with 10% FCS. Six hundred microliters of the same medium was added to the bottom of each well, and the plates were incubated at 37° C for 2 h to allow cell attachment. The inserts were gently rinsed three times to remove the serum, and 100 μ l of serum-free DMEM was added into each insert, so as to generate a gradient of 0-10% serum across the porous membranes. Following incubation at 37° C for 24 h, the cultures were fixed with 4% paraformaldehyde for 15 min and stained with 10% Giemsa, after which the cell layer on top of the membranes was removed by wiping with a Q-tip. The membranes were detached from the inserts, and mounted upside-down onto microscope slides. The migrated cells were counted under a microscope with 20X magnification in 10 random fields per membrane. Triplicate samples were used.

Biotinylation of cell membrane-associated MT1-MMP

Biotinylation of cell membrane-associated MT1-MMP was performed as we described (Tassone, Valacca, & Mignatti, 2015) using anti-MMP14 antibody [EP1264Y] rabbit mAb (Abcam, cat. # ab51074) for MT1-MMP immunoprecipitation.

Flow cytometry

Flow cytometric analysis of MT1-MMP was performed exactly as we described (Harbi et al., 2016) using MMP14 Alexa Fluor® 488-conjugated antibody (R&D systems, cat. # FAB9181G) or mouse IgG2B Alexa Fluor® 488-conjugated isotype control (R&D systems, cat. #IC0041G) following the manufacturer's instructions.

Analysis of CD44, DDR1 and ADAM9 shedding

For the CD44 shedding experiments we used a monoclonal antibody (Cell Signaling (CD44 Mouse mAb, 156-3C11) that recognizes amino acid residues surrounding Pro210 of human CD44. CD44 cleavage by MT1-MMP occurs between the Gly¹⁹²-Tyr bond and Arg¹⁸⁶-Ser (Kajita et al., 2001); therefore, the epitope of this antibody is retained in the cell-associated CD44 fragment after cleavage by MT1-MMP. For the analysis of DDR1 in cell extracts we used rabbit anti-DDR1 monoclonal antibody D1G6 (Cell Signaling Technology; cat. # 5583) or Phospho-DDR1 (Tyr792) Antibody (Cell Signaling Technology; cat. #11994). Antibody D1G6 was raised against a synthetic DDR1 peptide corresponding to residues surrounding Pro⁶⁰⁰. MT1-MMP cleaves DDR1 at the Ser³⁹⁷-Leu³⁹⁸ and Pro⁴⁰⁷-Val⁴⁰⁸ peptide bonds located within the extracellular juxtamembrane region (Fu et al., 2013). Therefore, the residues surrounding Pro⁶⁰⁰ are retained in the cell-associated DDR1 fragment after cleavage by MT1-MMP. By Western blotting antibody D1G6 and phosphor-DDR antibody gave similar results. For the analysis of ADAM9 in cell extracts we used mouse anti-ADAM-9 monoclonal antibody (R&D Systems; cat. # MAB939). By both ELISA and Western blotting this antibody recognizes a synthetic ADAM9 peptide comprising amino acids Ala206-Asp697. The initial cleavage of DDR1 by MT1-MMP generates an N-terminal fragment of 26 kDa (Chan et al., 2012). Therefore, after initial shedding by MT1-MMP, the epitope of this antibody is likely retained in a cell membrane-bound cleaved fragment with MW of ~ 70 kDa.

Isolation, culture and differentiation of BM SSC

Cultures of BM SSC were established by a modification of the method described (Soleimani & Nadri, 2009). BM was flushed from cut femurs and tibiae using 3-ml syringes with Minimum Essential Medium Alpha (α MEM without ribonucleosides or deoxyribonucleosides; Gibco, Life Technologies cat. # 12561-056, Grand Island, NY) supplemented with 15% fetal calf serum (FBS; Atlanta Biologicals, cat. # S11150, Flowery Branch, GA) and antibiotics (Penicillin-Streptomycin). After separating the BM into a single-cell suspension, the cells were passed through a 70- μ m cell strainer, incubated for 2 min in NH₄Cl red blood cell lysis solution (StemCell Technologies, cat. # 07800, Vancouver, Canada), and seeded into culture plates in α MEM supplemented with 15% FBS and antibiotics. Three hours later non-adherent cells were removed by replacing the medium with fresh complete medium. This procedure was repeated twice a day for the first 72 h. Subsequently, the adherent cells were washed with phosphate buffer saline (PBS) and incubated with fresh medium every 3-4 days until the cultures became subconfluent. To induce differentiation the cells were seeded into 24-well plates (5×10^4 cells/well). After 24 h, the culture medium was substituted with osteoblast or adipocyte differentiation medium, and incubation was continued for the

indicated times, changing the medium with freshly prepared medium twice a week. For chondrocyte differentiation the cells were seeded into 48-well plates as a pellet (2.5×10^5 cells/well). The medium was substituted with freshly prepared differentiation medium 2 h after seeding, and subsequently three times a week. Differentiation medium consisted of α MEM supplemented with 10% FBS, penicillin/streptomycin and, for osteoblast differentiation: dexamethasone 1 μ M (Millipore Sigma, cat. # D4209; St. Louis, MO), beta-glycerolphosphate 20 mM (Millipore Sigma, cat. # 500200), L-ascorbic acid 50 μ M (Millipore Sigma, cat. # A5960); for adipocyte differentiation: dexamethasone 1 μ M, indomethacin 50 μ M (Millipore Sigma, cat. # I7378), 3-Isobutyl-1-methylxanthine (IBMX) 500 nM (Millipore Sigma, cat. # I5879), insulin 5 μ g/ml (Millipore Sigma, cat. # I9278); and for chondrocyte differentiation: sodium pyruvate 100 μ g/ml, ascorbic acid 50 μ g/ml, dexamethasone 0.1 μ M, insulin, transferrin, selenium (ITS) mix 1X (Millipore Sigma, cat. # I3146) and bone morphogenetic protein-2 (BMP2) 300 ng/ml (Peprotech, cat. # 120-02-2UG, Rocky Hill, NJ). The SSC used for differentiation experiments were no older than passage 3 in culture.

CH310T1/2 cell culture, transfection and differentiation

C3H10T1/2 cells obtained from the American Type Culture Collection (ATCC CLL226, Gaithersburg, MD) were grown in Dulbecco's MEM (DMEM; Gibco, Life Technologies, cat. # 10566-016) supplemented with 10% FCS (Atlanta Biologicals). Cells at 50-70% confluency were transfected by overnight incubation with the indicated cDNAs in complete growth medium using TransIT[®]-LT1 - Transfection Reagent according to the manufacturer's instructions (Mirus Bio, LLC, cat. # MIR2300; Madison, WI). Stable transfectants were selected in medium containing 500 μ g/ml hygromycin B (InvivoGen, cat. # ant-hg-1; San Diego, CA). Pools of resistant cell colonies were characterized for MT1-MMP expression by reverse transcription-PCR and Western blotting, and used for differentiation assays. To induce differentiation the cells were seeded into 24-well plates at a density of 2.5×10^4 cells/well and then shifted to DMEM with low glucose (1 g/L; Gibco, Life Technologies, cat. # 11885076) with the same FCS concentration and supplements used for BM-derived SSC differentiation.

Quantitative PCR analysis of gene expression in differentiating cells

Cells were lysed in Trizol Reagent (Invitrogen, Waltham, MA) and total RNA was isolated with RNeasy (Qiagen, Valencia, CA), according to the manufacturer's instructions. RNA was quantified using a Nanodrop 2000 spectrophotometer (ThermoFisher Scientific, Waltham, MA), and 1 μ g of total RNA was used for cDNA preparation using SuperScript III (Invitrogen, Life Technologies). Quantitative real-time PCR reactions were performed with SYBR green PCR reagents using the ABI Prism 7300 sequence detection system (Applied Biosystems-Life Technologies, Waltham, MA). Relative gene expression levels were calculated using the 2 delta Ct method (Livak & Schmittgen, 2001). Target mRNA levels were normalized to the geomean GAPDH and HPRT1.

Primers for qPCR analysis of differentiation markers:

Osteoblast

Primer name	Sequence
ALP	F: CTGGCTACAAGGTGGTGGAC R: ACTGGGCCTGGTAGTTGTTG
BSP	F: CACCCCAAGCACAGACTTTT R: TCGTCGCTTTCCTTCACTTT
COL1	F: CAGTCGCTTCACCTACAGCA R: GACTGTCTTGCCCCAAGTTC
RUNX2	F: CCAAGTAGCCAGGTTCAACG R: TGGGGAGGATTTGTGAAGAC
OCN	F: GAACAGACTCCGGCGCTAC R: CAAGCAGGGTTAAGCTCACA

RANKL	F: ATTTGCACACCTCACCATCA R: CGTGGTACCAAGAGGACAGAG
OPG	F: CAGAGACCAGGAAATGGTGAA R: TCTGTGGTGAGGTTTCGAGTG
MMP14	F: CATTTCATGGGCAGTGATGAA R: GGGATACCCTGGCTCTACCT
GAPDH	F: GGCATTGCTCTCAATGACAA R: CCCTGTTGCTGTAGCCGTAT
HPRT1	F: TGTTGTTGGATATGCCCTTG R: GGCTTTGTATTTGGCTTTTCC

Adipocyte

Primer name	Sequence
Adipoq	F: TGGTTTCCAACATGACCTGA R: CGAGCTGTGGCCTCATGTA
Fabp4	F: GCAGAAGTGGGATGGAAAGT R: CTTGTGGAAGTCACGCCTTT
Pparg	F: TGGAATTAGATGACAGTGACTTGG R: CTCGATGGGCTTCACGTT
Cebpa	F: AGCCGAGATAAAGCCAAACA R: TCACTGGTCAACTCCAGCAC
Fasn	F: ACCTATGGCGAGGACTTGG R: GATGTGCACAGACACCTTCC
LPL	F: GAAAGCCGGAGAGACTCAGA R: TGGCATTTCACAAACACTGC

Chondrocyte

Primer name	Sequence
ADA4	F: TTTGACAAGTGCATGGTGTG R: TCGTGACCACATCGCTGTAT
ADA5	F: AGTGTGCGGAGGGGATAACT R: GGGATCCTCACAACGTCAGT
SOX9	F: AGGAAGCTGGCAGACCAGTA R: TCTTCTCGCTCTCGTTCAGC
COL2	F: GGCAACAGCAGGTTACATA R: CTTGCCCCACTTACCAGTGT
MMP13	F: CCTGGAATTGGCAACAAAGT R: TGGGCCCATTTGAAAAAGTAG

Primers for TGFB3 were purchased from IDT (Coralville, Iowa).

Analysis of circulating hormones and cytokines

Serum and/or plasma levels of the indicated hormones and cytokines were measured by multiplex ELISA kits (Millipore, Burlington, MA) at the High-Throughput Biology Laboratory of NYU School of Medicine.

RNA-Seq and data analysis

The indicated tissues and SSC were isolated from *Mmp14^{wt/wt}* and *Mmp14^{Y573D/Y573}* mice (3 mice/tissue/genotype) and total RNA was extracted using the RNeasy kit (Qiagen). The subsequent steps were carried out by personnel of the Genome Technology Center of NYU School of Medicine. RNA-Seq libraries were prepared with the TruSeq sample preparation kit (Illumina, San Diego, CA). Sequencing reads were mapped to the mouse genome using the STAR aligner (v2.5.0c) (Dobin et al., 2013). Alignments were guided by a Gene Transfer Format file (Ensembl GTF version GRCh37.70). The mean read insert sizes and their standard deviations were calculated using Picard tools (v.1.126). Read count tables were generated using HTSeq (v0.6.0) (Anders, Pyl, & Huber, 2015), normalized to their library size factors with DESeq (v3.7) (Anders & Huber, 2010), and differential expression analysis was performed. Read Per Million (RPM) normalized BigWig files were generated using BEDTools (v2.17.0) (Quinlan & Hall, 2010) and bedGraphToBigWig tool (v4). Statistical analyses were performed with R (v3.1.1), GO analysis with David Bioinformatics Resources 6.8 (Huang da, Sherman, & Lempicki, 2009a, 2009b) and GSEA with the hallmarks (h.all.v6.1.symbols.gmt) gene sets of the Molecular Signature Database (MSigDB) v6.1 (Mootha et al., 2003; Subramanian et al., 2005).

BM transplant

Mice of 3 and 5 months of age were used for BM transplant experiments. The BM of female mice was transplanted into age-matched male mice. The recipient mice were lethally irradiated with a single dose of 9 Gy. Twenty-four hours later BM cells (BMCs) were collected from the tibias and femurs of donor mice, suspended in PBS containing 2% heat-inactivated FBS, and 5×10^6 BMCs in 200 μ l were injected into the recipient mice via the tail vein. Eight weeks later the mice were subjected to DEXA scanning analysis and then sacrificed. To verify BM engraftment we transplanted female mice with male BM, in order to characterize the recipients' BM by immunohistochemistry and/or flow cytometry with antibody to UTY, a Y chromosome marker (Wang et al., 2013). However, several commercially available antibodies failed to recognize UTY in murine BM cells, probably because this marker is not expressed in these cells. For the same reasons we were not able to identify the genotype of transplanted animals' WAT or BAT by immunohistochemistry with UTY antibody, or RNA *in situ* hybridization. Therefore, we genotyped the BM of recipient mice for the *Mmp14^{Y573D/Y573D}* mutation using the PCR primers designed for genotyping our mice. We reasoned that partial engraftment of donor's BM would result in both the *Mmp14^{wt/wt}* and *Mmp14^{Y573D/Y573D}* genotypes, with a pattern of PCR products identical to that of *Mmp14^{Y573D/wt}* mice (Fig. 1 B). In addition, running the PCR reaction for a high number of cycles would afford detection of small residual amounts of BM from recipient mice. By this method, the results (Fig. 10 – figure supplement 1) showed virtually complete replacement of the recipient's BM with the donors' BM. However, we could not use this method to identify donor-derived adipocytes in the transplanted animals' WAT or BAT as these tissues contain circulating cells – e.g. macrophages – from the BM.

Statistical analysis

For the BM transplant experiments, to calculate the number of mice required in each group to achieve statistical significance for the expected differences between controls and experimental groups, we used the analysis of Power of Test based on the variance observed in our previous analyses of our mice. In our characterization of the bone, cartilage and fat phenotypes we found differences between MT1-MMP Y573D wt mice ranging 25% - 75% in the mean (m) values of the various parameters, with standard deviations (SD) ranging 25% - 50%. Therefore, we assumed $m = 50\%$ and $SD = 35\%$. To calculate the number of animals needed we used the formula: $n = (Za + Zb)^2 \times 2 (\%SD)^2 / (\%D)^2$, where: n is number of animals per group, (Za + Zb)² for a 2-Tailed test with power of 90% at $p=0.05$ is 10.5, %SD is the percent standard deviation, and %D is the assumed percent difference between control and experimental group(s). Thus, $n = 10.5 \times 2(35)^2 / 50^2 = 10.29$. Therefore, we planned to use 11 mice for each experimental and

control group. The statistical analysis of the results of all the experiments was performed with the two-tailed Student's t-test (unless otherwise indicated) using GraphPad Prism, Version 7.05.

SUPPLEMENTAL REFERENCES

- Anders, S., & Huber, W. (2010). Differential expression analysis for sequence count data. *Genome Biol*, *11*(10), R106. doi:10.1186/gb-2010-11-10-r106
- Anders, S., Pyl, P. T., & Huber, W. (2015). HTSeq--a Python framework to work with high-throughput sequencing data. *Bioinformatics*, *31*(2), 166-169. doi:10.1093/bioinformatics/btu638
- Bouxsein, M. L., Boyd, S. K., Christiansen, B. A., Guldberg, R. E., Jepsen, K. J., & Muller, R. (2010). Guidelines for assessment of bone microstructure in rodents using micro-computed tomography. *J Bone Miner Res*, *25*(7), 1468-1486. doi:10.1002/jbmr.141
- Chan, K. M., Wong, H. L., Jin, G., Liu, B., Cao, R., Cao, Y., . . . Zhou, Z. (2012). MT1-MMP inactivates ADAM9 to regulate FGFR2 signaling and calvarial osteogenesis. *Dev Cell*, *22*(6), 1176-1190. doi:10.1016/j.devcel.2012.04.014
- D'Alessio, S., Ferrari, G., Cinnante, K., Scheerer, W., Galloway, A. C., Roses, D. F., . . . Mignatti, P. (2008). Tissue inhibitor of metalloproteinases-2 binding to membrane-type 1 matrix metalloproteinase induces MAPK activation and cell growth by a non-proteolytic mechanism. *J Biol Chem*, *283*(1), 87-99. doi:M705492200 [pii] 10.1074/jbc.M705492200
- Dobin, A., Davis, C. A., Schlesinger, F., Drenkow, J., Zaleski, C., Jha, S., . Gingeras, T. R. (2013). STAR: ultrafast universal RNA-seq aligner. *Bioinformatics*, *29*(1), 15-21. doi:10.1093/bioinformatics/bts635
- Fu, H. L., Sohail, A., Valiathan, R. R., Wasinski, B. D., Kumarasiri, M., Mahasenan, K. V., . . . Fridman, R. (2013). Shedding of discoidin domain receptor 1 by membrane-type matrix metalloproteinases. *J Biol Chem*, *288*(17), 12114-12129. doi:10.1074/jbc.M112.409599
- Harbi, S., Wang, R., Gregory, M., Hanson, N., Kobylarz, K., Ryan, K., . . . Mignatti, P. (2016). Infantile Hemangioma Originates From A Dysregulated But Not Fully Transformed Multipotent Stem Cell. *Sci Rep*, *6*, 35811. doi:10.1038/srep35811
- Huang da, W., Sherman, B. T., & Lempicki, R. A. (2009a). Bioinformatics enrichment tools: paths toward the comprehensive functional analysis of large gene lists. *Nucleic Acids Res*, *37*(1), 1-13. doi:10.1093/nar/gkn923
- Huang da, W., Sherman, B. T., & Lempicki, R. A. (2009b). Systematic and integrative analysis of large gene lists using DAVID bioinformatics resources. *Nat Protoc*, *4*(1), 44-57. doi:10.1038/nprot.2008.211
- Kajita, M., Itoh, Y., Chiba, T., Mori, H., Okada, A., Kinoh, H., & Seiki, M. (2001). Membrane-type 1 matrix metalloproteinase cleaves CD44 and promotes cell migration. *J Cell Biol*, *153*(5), 893-904.
- Livak, K. J., & Schmittgen, T. D. (2001). Analysis of relative gene expression data using real-time quantitative PCR and the 2⁻(Delta Delta C(T)) Method. *Methods*, *25*(4), 402-408. doi:10.1006/meth.2001.1262
- Mootha, V. K., Lindgren, C. M., Eriksson, K. F., Subramanian, A., Sihag, S., Lehar, J., . . . Groop, L. C. (2003). PGC-1alpha-responsive genes involved in oxidative phosphorylation are coordinately downregulated in human diabetes. *Nat Genet*, *34*(3), 267-273. doi:10.1038/ng1180
- Quinlan, A. R., & Hall, I. M. (2010). BEDTools: a flexible suite of utilities for comparing genomic features. *Bioinformatics*, *26*(6), 841-842. doi:10.1093/bioinformatics/btq033

- Soleimani, M., & Nadri, S. (2009). A protocol for isolation and culture of mesenchymal stem cells from mouse bone marrow. *Nat Protoc*, 4(1), 102-106. doi:10.1038/nprot.2008.221
- Subramanian, A., Tamayo, P., Mootha, V. K., Mukherjee, S., Ebert, B. L., Gillette, M. A., . . . Mesirov, J. P. (2005). Gene set enrichment analysis: a knowledge-based approach for interpreting genome-wide expression profiles. *Proc Natl Acad Sci U S A*, 102(43), 15545-15550. doi:10.1073/pnas.0506580102
- Tassone, E., Valacca, C., & Mignatti, P. (2015). Membrane-Type 1 Matrix Metalloproteinase Downregulates Fibroblast Growth Factor-2 Binding to the Cell Surface and Intracellular Signaling. *J Cell Physiol*, 230(2), 366-377. doi:10.1002/jcp.24717
- Valacca, C., Tassone, E., & Mignatti, P. (2015). TIMP-2 Interaction with MT1-MMP Activates the AKT Pathway and Protects Tumor Cells from Apoptosis. *PLoS One*, 10(9), e0136797. doi:10.1371/journal.pone.0136797
- Wang, H., Hu, Y. C., Markoulaki, S., Welstead, G. G., Cheng, A. W., Shivalila, C. S., . . . Jaenisch, R. (2013). TALEN-mediated editing of the mouse Y chromosome. *Nat Biotechnol*, 31(6), 530-532. doi:10.1038/nbt.2595