


RESEARCH

Open Access



Gene signature and immune cell profiling by high-dimensional, single-cell analysis in COVID-19 patients, presenting Low T3 syndrome and coexistent hematological malignancies

Salvatore Sciacchitano^{1,2*} , Claudia De Vitis¹, Michela D'Ascanio¹, Simonetta Giovagnoli³, Chiara De Dominicis⁴, Andrea Laghi⁴, Paolo Anibaldi⁵, Andrea Petrucca⁶, Gerardo Salerno⁶, Iolanda Santino⁶, Rachele Amodeo⁷, Maurizio Simmaco⁶, Christian Napoli⁴, Agostino Tafuri¹, Arianna Di Napoli¹, Andrea Sacconi⁸, Valentina Salvati⁹, Gennaro Ciliberto⁹, Maurizio Fanciulli¹⁰, Giulia Piaggio¹⁰, Luisa de Latouliere¹⁰, Alberto Ricci¹ and Rita Mancini¹

Abstract

Background: Low T3 syndrome is frequent in patients admitted to intensive care units for critical illness and pneumonia. It has been reported also in patients with COVID-19, Hodgkin disease and chronic lymphocytic leukemia. We analyzed the clinical relevance of Low T3 syndrome in COVID-19 patients and, in particular, in those with associated hematological malignancies.

Methods: Sixty-two consecutive patients, hospitalized during the first wave of SARS-CoV-2 outbreak in Sant'Andrea University Hospital in Rome, were subdivided in 38 patients (Group A), showing low levels of FT3, and in 24 patients (Group B), with normal FT3 serum values. During the acute phase of the disease, we measured serum, radiologic and clinical disease severity markers and scores, in search of possible correlations with FT3 serum values. In addition, in 6 COVID-19 patients, 4 with Low T3 syndrome, including 2 with a hematological malignancy, and 2 with normal FT3 values, we performed, high-dimensional single-cell analysis by mass cytometry, multiplex cytokine assay and gene expression profiling in peripheral blood mononuclear cells (PBMC).

Results: Low FT3 serum values were correlated with increased Absolute Neutrophil Count, NLR and dNLR ratios and with reduced total count of CD3+, CD4+ and CD8+ T cells. Low FT3 values correlated also with increased levels of inflammation, tissue damage and coagulation serum markers as well as with SOFA, LIPI and TSS scores. The CyTOF analysis demonstrated reduction of the effector memory and terminal effector subtypes of the CD4+ T lymphocytes. Multiplex cytokine assay indicates that mainly IL-6, IP-10 and MCAF changes are associated with FT3 serum levels, particularly in patients with coexistent hematological malignancies. Gene expression analysis using Nanostring identified four genes differently expressed involved in host immune response, namely CD38, CD79B, IFIT3 and NLRP3.

*Correspondence: salvatore.sciacchitano@uniroma1.it

¹ Department of Clinical and Molecular Medicine, Sapienza University, Via di Grottarossa, 1035/1039, 00189 Rome, Italy

Full list of author information is available at the end of the article



© The Author(s) 2021. This article is licensed under a Creative Commons Attribution 4.0 International License, which permits use, sharing, adaptation, distribution and reproduction in any medium or format, as long as you give appropriate credit to the original author(s) and the source, provide a link to the Creative Commons licence, and indicate if changes were made. The images or other third party material in this article are included in the article's Creative Commons licence, unless indicated otherwise in a credit line to the material. If material is not included in the article's Creative Commons licence and your intended use is not permitted by statutory regulation or exceeds the permitted use, you will need to obtain permission directly from the copyright holder. To view a copy of this licence, visit <http://creativecommons.org/licenses/by/4.0/>. The Creative Commons Public Domain Dedication waiver (<http://creativecommons.org/publicdomain/zero/1.0/>) applies to the data made available in this article, unless otherwise stated in a credit line to the data.

Conclusions: Our study demonstrates that low FT3 serum levels are associated with severe COVID-19. Our multi-omics approach suggests that T3 is involved in the immune response in COVID-19 and coexistent hematological malignancy and new possible T3 target genes in these patients have been identified.

Keywords: Low T3 syndrome, Thyroid function, Coronavirus disease (COVID-19), Hematological malignancies, Differentially expressed genes, NanoString, CyTOF

Background

Zoonotic coronavirus has infected human populations three times in as many decades [1]. Coronavirus affect most the lung, but the disease can involve any organ during the viraemic phase. Previous observations indicated potential links between coronavirus infection and endocrine and metabolic alterations [2], mostly related to diabetes and hypertension. Few studies have analyzed other endocrinological alterations associated with coronavirus infections. The occurrence of chronic endocrine sequelae was evaluated in SARS survivors, showing evidences of hypopituitarism, including central hypocortisolism and central hypothyroidism [3]. Few autopsy studies are available regarding the occurrence of specific damages in endocrine tissues caused by coronaviruses [4, 5]. The Low T3 syndrome is also observed in COVID-19 patients, as reported in a recent study [6]. In addition, the Low T3 syndrome is considered a predictor of poor prognosis in chronic lymphocytic leukemia (CLL) [7], in Hodgkin disease (HD) [8] and in B cell Lymphoma [9].

The present study was performed to evaluate alterations in the thyroid function, associated with the acute phase of the SARS-CoV-2 virus infection and to correlate them with the severity of the disease. We also evaluated the clinical relevance of the Low T3 syndrome by gene signature analysis and immunological profiling in COVID-19 patients and in particular in those affected by coexistent hematological malignancies. We identified immunological alterations specifically associated with the occurrence of low FT3 serum values and a set of four genes that are deregulated in COVID-19 patients with Low T3 syndrome and with coexistent hematological malignancies.

Methods

Subjects recruitment

The research has been conducted at the Sant'Andrea University Hospital, designated as one of the referral Hospitals in Rome, Italy. During the first wave of SARS-CoV-2 outbreak, we examined a total of 62 hospitalized patients that were found to be positive for the presence of the SARS-CoV-2 virus in the nasal and oropharyngeal swabs, according to the WHO recommendations [10]. In particular, two real-time reverse-transcription polymerase chain reaction (rRT-PCR) detection kits have been used,

namely the Allplex™ 2019-nCoV Assay (Seegene, Seoul, Republic of Korea) and the RNA Detection kit (DAAN Gene Co. LTD, Guangzhou, Guangdong, China), both CE-approved. The diagnosis has been considered positive in the presence of at least two of the three genes considered (E, RdRP and N genes) for the kit by Seegene and of the two genes considered (ORF1ab and N genes) for the kit by DAAN.

Samples collection

In our COVID-19 patients we have evaluated the serum levels of FT3, FT4, TSH and of several severity markers during the acute phase of the disease, prior to any treatment. Blood samples have been drawn for blood cells count and measurement of the lymphocyte subpopulations by Flow Cytometric Analysis (FCA). The Procalcitonin (PCT) and the high-sensitive C Reactive Protein (hs-CRP) have been evaluated as markers of inflammation. The Prothrombin Time (PT), the Fibrinogen and the D-dimer have been measured as markers of coagulation. Tissue damages have been checked by measuring the Lactate DeHydrogenase (LDH), the Ferritin, the Creatinine, the total Bilirubin, the Creatine Kinase (CK), the Creatine Kinase-Myocardial Band (CK-MB) and the hypersensitive troponin I (hs-cTnI). Furthermore, we measured the immune marker interleukin-6 (IL-6).

A series of indexes have been calculated: including the neutrophil-to-lymphocyte ratio (NLR), as index of severe systemic inflammatory response in critically ill patients [11], the derived neutrophil-to-lymphocyte ratio (dNLR), previously used in cancer patients [12], the platelet-to-lymphocyte ratio (PLR), as an informative marker of acute inflammatory and prothrombotic states [13, 14] and the Lung Immune Prognostic Index (LIPI), as a prognostic index in metastatic non-small cell lung cancer [15, 16].

Flow cytometric analysis (FCA)

FCA was performed in the automated AQUIOS CL® "load & go" flow cytometer (Beckman Coulter, Life Sciences Division, Indianapolis, USA), using fluorescent-labelled antibodies against the following cellular surface markers: CD45, CD19, CD3, CD4, CD8, CD14, CD15 and CD56. Briefly, 50 µl of whole blood was incubated with proper fluorescent-labelled antibodies for 30 min

in dark at room temperature. 450 μ l of 1 \times RBC FACS™ Lysing Solution (Becton, Dickinson and Company BD Biosciences, San Jose, USA) was added to the antibody-blood mixture and incubated for 15 min. at room temperature to remove red blood cells, which was ready for analysis on flow cytometer machine.

The interleukin-6 (IL-6) assay

Interleukin-6 (IL-6) was measured using the IL-6 Human SimpleStep Elisa Kit (Thermo Fisher, Milan, Italy). All exams have been performed simultaneously to the measurements of thyroid function.

Thyroid hormone function tests

The FT3, FT4 and TSH serum levels were assayed using a Chemiluminescent Microparticle Immunoassay (CMIA), using an immunoassay analyser (ARCHITECT i1000SR, Abbott Laboratories, Abbott Park, IL, USA) and specific diagnostic kits (ARCHITECT Free T3, FT4 and TSH assay, Abbott Laboratories, Abbott Park, IL, USA). Conventional reference intervals for FT3, FT4 and TSH were 1.71–3.71 pg/ml, 0.7–1.48 ng/dl and 0.35–4.0 μ IU/ml, respectively.

CT acquisition

Chest CT were obtained on a 128-slice scanner (GE Revolution EVO CT Scanner, GE Medical Systems, Milwaukee, WI, USA), with patients in supine position and during end-inspiration, without iodinated contrast medium injection. The following technical parameters were used: tube voltage: 120 kV; tube current modulation: 100–250 mAs; spiral pitch factor: 0.98; collimation width: 0.625. Images were reconstructed with a sharp convolution kernel (BONEPLUS) at a slice thickness of 1.25 mm.

Quantification of lung CT lesions by TSS

DICOM data have been transferred onto a PACS workstation (Centricity Universal Viewer v.6.0, GE Medical Systems, Milwaukee, WI, USA) and independently evaluated by two expert radiologists, using a dedicated software (Thoracic VCAR v13.1, GE). Only imaging features related to COVID-19, according to the most recent literature [17, 18] have been considered valid for image analysis. For each patient, disease severity has been visually assessed through a “Total Severity Score” (TSS) [19]. In each lobe the percentage of parenchymal involvement was classified as none (0%), minimal (1–25%), mild (26–50%), moderate (51–75%) and severe (76–100%), with a score equal to 0, 1, 2, 3, 4, respectively. TSS, ranging from 0 to 20, was calculated by summing the scores of the five lobes.

SOFA score

The Sequential Organ Failure Assessment (SOFA) score, a mortality prediction score based on the degree of dysfunction of six organ systems, has been calculated using the following variables: PaO₂/FiO₂ measured in mmHg, Platelets counted in $\times 10^3/\mu$ l, the Glasgow Coma Scale from grade 0 to +4, the bilirubin, measured in mg/dl, the mean arterial pressure in mmHg and the creatinine in mg/dl. The SOFA score has been recently used to evaluate the severity of the clinical conditions in COVID-19 patients [20].

Subjects analyzed by mass cytometry, multiplex cytokine analysis and NanoString

In a small group of COVID-19 patients the impact of FT3 serum levels on the immunological and gene expression profiles has been analyzed using two very highly accurate and sensitive methods. In particular, peripheral blood mononuclear cells (PBMC) samples from COVID-19 patients with low and normal FT3 serum levels were immunophenotyped using mass cytometry and sera samples were characterized using multiplexed cytokine analysis. The mass cytometry, was performed using the Cytometry by Time-of-Flight (CyTOF) instrument, to evaluate and quantified the different subtypes of the circulating immune cells. In addition, a NanoString-based gene expression assay has been applied to get reliable, sensitive, and highly-multiplexed detection of mRNA targets. The blood samples have been obtained by 6 COVID-19 patients, four of which had Low T3 Syndrome and two had normal FT3 serum values. The epidemiological and clinical characteristic of these patients are reported in Table 1. Among the patients with COVID-19 and Low T3 Syndrome, a hematological malignancy was present in two cases and consisted in a Mixed Cellularity classical Hodgkin Lymphoma (MCcHL) (Sample # SAND-011) and in a chronic lymphocytic leukemia (Sample # SAND-006). Two samples from non-COVID-19 healthy donors (HC-02 and HC-06) have been used as controls.

Isolation of peripheral blood mononuclear cells (PBMCs)

We have collected blood samples in vials supplemented with anticoagulants (EDTA). We have isolated PBMCs by density gradient centrifugation, using Lympholyte®-H Cell Separation Media (Cedarline Industries LTD, British Columbia, Canada). The blood samples have been diluted with 1:2 volumes phosphate-buffered saline (PBS), and gently layer the whole blood over top of the Lymphocyte (density gradient medium with $\rho=1.077$ g/ml) making sure not mix the two layers, before centrifugation at 1600 $\times g$ for 20 min at 4 °C in a swinging bucket rotor without brake. We carefully aspirated most of the upper

Table 1 COVID-19 patients analyzed by CyTOF and Nanostring, divided according to their serum FT3 levels

Pts	Sex	Age	Neoplastic disease	Non-neoplastic diseases	FT3 (pg/ml)	FT4 (ng/ml)	TSH (μIU/ml)
A—Patients with Normal FT3 serum values							
Sand-100	M	68		Paroxysmal atrial fibrillation, peptic ulcers with anemia, COPD with pneumothorax in the past; monoclonal gammopathy	1.8	1.2	0.11
Sand-007	F	88		Hypertension	1.8	1.1	0.38
B—Patients with low FT3 serum values							
Sand-003	M	60		Hematoma of the right iliopsoas muscle (secondary to therapy with heparin); hemorrhagic liver cyst	1.3	0.8	0.77
Sand-006	M	74	Chronic lymphocytic leukemia (CLL)	Benign prostatic hypertrophy (BPH); pancreatic cyst	1.2	1.8	0.07
Sand-011	M	69	Mixed cellularity classical Hodgkin lymphoma (MCcHL)	Gallbladder stones; benign prostatic hypertrophy (BPH)	1	0.9	0.62
Sand-004	F	69		Encephalitis	<1	1	0.2

layer, leaving the mononuclear cells at the interphase, transfer the mononuclear cells to a new 50 ml tube, fill the tube with PBS, and centrifuge at 1600×g for 10 min at 4 °C (twice). After removal of most of the platelets, we have stored the PBMC in two different storage media. Prior to storage, the batches have been aliquoted in numbers and volumes appropriate for each protocol. A suspension of 10⁷ PBMCs/ml has been preserved in freezer medium, and a final concentration of 2 × 10⁶ PBMCs/ml was resuspended in QIAzol Lysis Reagent (QIAGEN, Manchester, UK).

Immune phenotyping by CyTOF and data analysis

Antibody staining Maxpar Direct Immune Profiling Assay was used to characterize immune phenotyping of PBMC samples, according to the method previously reported [21]. Briefly, cryopreserved PBMC were thawed, treated with DNaseI (Roche), counted and cell viability was determined. Cells were washed in Cell Staining Buffer (CSB) and 3 × 10⁶ cells were resuspended in 50 μl of the same buffer. Samples were treated with Human TruStain FcX for blocking FC receptors. Then samples were diluted and added to the dry antibody tubes for antibody staining. After a 30-min incubation, the cells were washed twice in CSB and fixed in 1.6% paraformaldehyde. Then, cells were resuspended in 1 ml of the 125 nM Cell-ID Intercalator-Ir and frozen at -80 °C. Before data acquisition, fixed cells were washed twice in CSB, twice in Maxpar Cell Acquisition Solution (CAS) and counted. Cell were resuspended in CAS containing 0.1 × EQTM Four Element Calibration Beads with a final concentration of 1 × 10⁶ cells/ml. Samples were filtered through a 35 μm cell strainer. Sample acquisition was performed using Helios system. Following antibodies were analyzed: CD45, CD196/CCR6, CD123, CD19,

CD4, CD8a, CD11c, CD16, CD45RO, CD45RA, CD161, CD194/CCR4, CD25, CD27, CD57, CD183/CXCR3, CD185/CXCR5, CD28, CD38, CD56/NCAM, TCRgd (B1), CD294, CD197/CCR7, CD14, CD3, CD20, CD66b, HLA-DR, IgD, CD127, live/dead intercalator-103Rh.

Data were analyzed by Maxpar[®] Pathsetter[™] automated package (Fluidigm, South San Francisco, CA, USA), powered by GemStone[™] 2.0.41 (Verity Software House, Topsham, ME, USA). Data were normalized using the CyTOF Software v.6.7.1016, with a Cleanup PSM model leveraging Gaussian pulse-processing parameters to eliminate unwanted events. Normalized files contain only intact live singlet cells. Automated analysis identifies and labels the major immune cell populations in sample files. This system is integrated with dimensionality-reduction mapping known as Cauchy Enhanced Nearest-neighbor Stochastic Embedding (Cen-se[™]), which generates a visual display of high-dimensional data labeled with the major cell populations. The high-dimensional Cen-se[™] (next-gen t-SNE) map has been used to identify and visualize all populations of immune cells in our samples [22].

Multiplex cytokine immunoassay

The Bio-Plex Pro Human Cytokine 27-Plex Immunoassay (Bio-Rad Laboratories S.r.l. Segrate, Milan, Italy) has been used to characterize Cytokine Immunoassay of human sera samples. Samples were prepared following the manufacturer’s instructions and quantified in accordance to the generation of the standards curves over a broad range for each target. The magnetic bead-based multiplex assay system allows detection and quantification of multiple cytokines from a single sample of plasma. Primary antibodies are coupled to the magnetic beads, detection proceeds with secondary antibody and streptavidin-PE. Following Cytokine were analyzed: FGF basic, Eotaxin,

G-CSF, GM-CSF, IFN- γ , IL-1 β , IL-1ra, IL-2, IL-4, IL-5, IL-6, IL-7, IL-8, IL-9, IL-10, IL-12 (p70), IL-13, IL-15, IL-17, IP-10, MCP-1 (MCAF), MIP-1 α , MIP-1 β , PDGF-BB, RANTES, TNF- α , VEGF. Sample acquisition has been performed using the Bio-plex Manager MP software with the MagPix instrument. Data were analyzed with xPONENT software.

NanoString analysis

Transcriptome analysis is based on the nCounter[®] Pan-Cancer human IO 360[™] Panel and NanoString platform (NanoString, Seattle, WA, USA). This panel allows simultaneous analysis of 770 genes involved in the immune response in cancer. We compared the NanoString data from our six COVID-19 patients with two healthy control donors. Principal component analysis (PCA) and ANOVA analysis are performed using Partek Genomic Suite (Partek Incorporated, St. Louis, MO, USA). PCA was used to characterize samples based on their gene expression profiles. ANOVA analysis is used to identify differentially expressed genes (significant p -value < 0.05) and samples are clustered by hierarchical clustering.

Statistical analysis

Descriptive statistical analysis is performed on raw data after a one-sample Kolmogorov–Smirnov test [23]. Due to low number of patients a 1% significance level is accepted to reject the null hypothesis. The results are expressed as means \pm SD. A two-tailed P value of 0.05 or less has been used as a criterion to indicate statistical significance. NS = not significant. Multivariate linear regression analysis is performed using FT3 serum value as a dependent variable. Data have been statistically

analyzed using the GraphPad Prism software (version 8.4.1) (GraphPad Software, San Diego, CA, USA).

Ethical approval

A written informed consent was obtained by participant to the study. The study was approved by our Institutional Ethical Committee (University La Sapienza of Rome, Italy) (RIF. CE 5773_2020, Prot. # 52SA_2020, and its subsequent substantial amendment RIF. CE 5773_2020, Prot. # 171SA_2020), on the basis that it complied with the declaration of Helsinki and that the protocol followed existing good clinical practice guidelines.

Results

Epidemiological, anamnestic and clinical data

A total of 62 consecutive patients, referred to our hospital for COVID-19 and identified as laboratory-confirmed SARS-CoV-2 infection, have been included in the study. They are 29 men and 33 women. Their median age is 68.4 years (ranging from 29 to 100 years) (Table 2). Most of them had underlying diseases (54 [87%]), including diabetes (32 [51%]), hypertension (40 [64.5%]), cardiovascular disease (27 [43%]), COPD (12 [34%]) and malignancy (9 [14%]).

The epidemiological, anamnestic and clinical data regarding the patients are listed in Table 2. Patients have been divided into two groups according to their FT3 values. Thirty-eight patients are classified in Group A because of a low FT3 serum value (≤ 1.7 pg/ml, or ≤ 3.2 pmol/l). Twenty-four patients are included in the Group B because they show a normal FT3 serum value (between 1.7 pg/ml and 3.71 ng/ml or between 3.2 and 12.8 pmol/l). In Group A there are equal numbers of

Table 2 Epidemiological and anamnestic data of our COVID-19 patients

Characteristics	All patients (n = 62)	Group A (n = 38)	Group B (n = 24)	P value
Age, years	68.4 (29–100)	70.5 (32–100)	65.5 (29–87)	NS
Sex				
Men	29 (47%)	19 (50%)	10 (42%)	NS
Women	33 (53%)	19 (50%)	14 (58%)	NS
Current smoking	22 (35.5%)	10 (26.3%)	12 (50%)	0.03
Comorbidity (at least one)	54 (87.1%)	33 (86.8%)	21 (87.5%)	NS
Diabetes	32 (51.6%)	24 (63.2%)	8 (33.3%)	0.03
Hypertension	40 (64.5%)	18 (47.4%)	12 (50.0%)	NS
Cardiovascular disease	27 (43.5%)	19 (50.0%)	8 (33.3%)	NS
Chronic obstructive pulmonary disease	21 (33.9%)	11 (28.9%)	10 (41.7%)	NS
Malignancy	9 (14.5%)	6 (15.8%)	3 (12.5%)	NS
Multiple sclerosis	1 (1.6%)	0 (0%)	1 (4.2%)	NS

Data are reported for all patients and for patients with low FT3 values (Group A), compared to those with normal FT3 values (Group B). The p values are indicated as a measure of the levels of significance of the differences among the two groups

males and females (M/F ratio = 1.0), while in Group B the proportion of women is slightly higher (M/F ratio = 0.7). A malignant lesion was reported in both groups at a similar rate, namely 15.8% in Group A compared to 12.5% in Group B. The mean values of all the severity markers of the disease that we have measured are reported in Table 3.

Thyroid function tests

In patients of Group A, the reduced levels of the serum FT3 values is observed in association with the reduction in the mean TSH serum levels. In 19 cases of Group A, the TSH serum levels are suppressed under the lower normal limit, and in two of them there is also a reduction in the FT4 serum levels. There is a clear correlation between reduced levels of FT3 and reduced levels of TSH (Additional file 1: Fig. S1).

Hemocromocytometric parameters

The mean blood counts of our COVID-19 patients, measured on admission, show normal values of red blood cells (RBC), white blood cell (WBC) and platelets (PLT) (Table 3). The mean values of both NLR and dNLR are increased. When we comparatively examined the results in the two groups, we find that a statistically significant difference ($p \leq 0.05$) is present in many parameters of the CBC (Table 3; Fig. 1). The WBC and the Absolute Neutrophils Count (ANC) are increased in Group A compared to Group B. Conversely, the absolute count of RBC and the value of hemoglobin are reduced in Group A compared to Group B. The Absolute Lymphocyte Count (ALC) is reduced too in patients of Group A compared to those in Group B, although with no statistically significance. As a consequence, we observed a higher value of both NLR and dNLR in Group A compared to Group B. Hemocromocytometric analysis indicates a clear correlation between the FT3 serum levels and the NLR and dNLR (Fig. 1a, b). Therefore, the low FT3 values appear to be correlated with mild anemia and, in a strong and highly significant manner, with increased ANC, NLR and dNLR.

Serum markers of inflammation

We have analyzed the Absolute Platelet Count (APC), the PLR, the PCT and the hs-CRP as markers of systemic inflammation. The mean value of all of them are reported in Table 3. Patients in Group A show a slightly reduced APC values, compared to those in Group B, with an increased PLR (Additional file 2: Fig. S2). In both cases the difference is statistically significant. Low FT3 serum levels are associated with a significant reduction of both PLT and PLR.

The PCT is slightly elevated in all COVID-19 patients examined. A minor and not significant difference is observed in the two Groups. The hs-CRP is highly elevated in all patients and it is much higher in Group A compared to Group B. The hs-CRP serum levels appear to be inversely correlated to the FT3 serum levels (Table 3; Fig. 1c, d).

Serum markers of tissue damages

The serum levels of several markers of tissue damages have been assessed in our two Groups of patients (Table 3). No significant differences are visible between the two Groups in serum levels of CK, CK-MB, total Bilirubin, aspartate aminotransferase (AST) and alanine aminotransferase (ALT). Their medium values are all in the normal ranges. The serum levels of hs-cTnI and of LDH appear to be inversely correlated with the serum FT3 levels in our COVID-19 patients (Fig. 1c, d). The serum levels of hs-cTnI are markedly elevated in 10 out of 38 patients (26.3%) in Group A, in whom the diagnosis of virus-related cardiac injury has been made, and in only 1 patient out of 24 (4.2%) in Group B. The mean serum levels of hs-cTnI are higher in Group A, compared to Group B. Creatinine, is only slightly higher in Group A, compared to Group B. A marked difference between the two Groups is also visible in the serum levels of Ferritin and LDH. Mean value of serum Ferritin, in fact, is rather high in all COVID-19 patients and it is much higher in Group A, compared to Group B. Another marker of tissue damage that is substantially increased in all COVID-19 patients is the serum LDH. LDH serum values are higher in Group A, compared to values in Group B. Our results indicate that in COVID-19 patients low FT3 values are associated with increased serum levels of tissue damage markers, especially the LDH, Ferritin and hs-cTnI (Table 3; Fig. 1c, d) (Additional file 3: Fig. S3a).

Serum coagulation markers

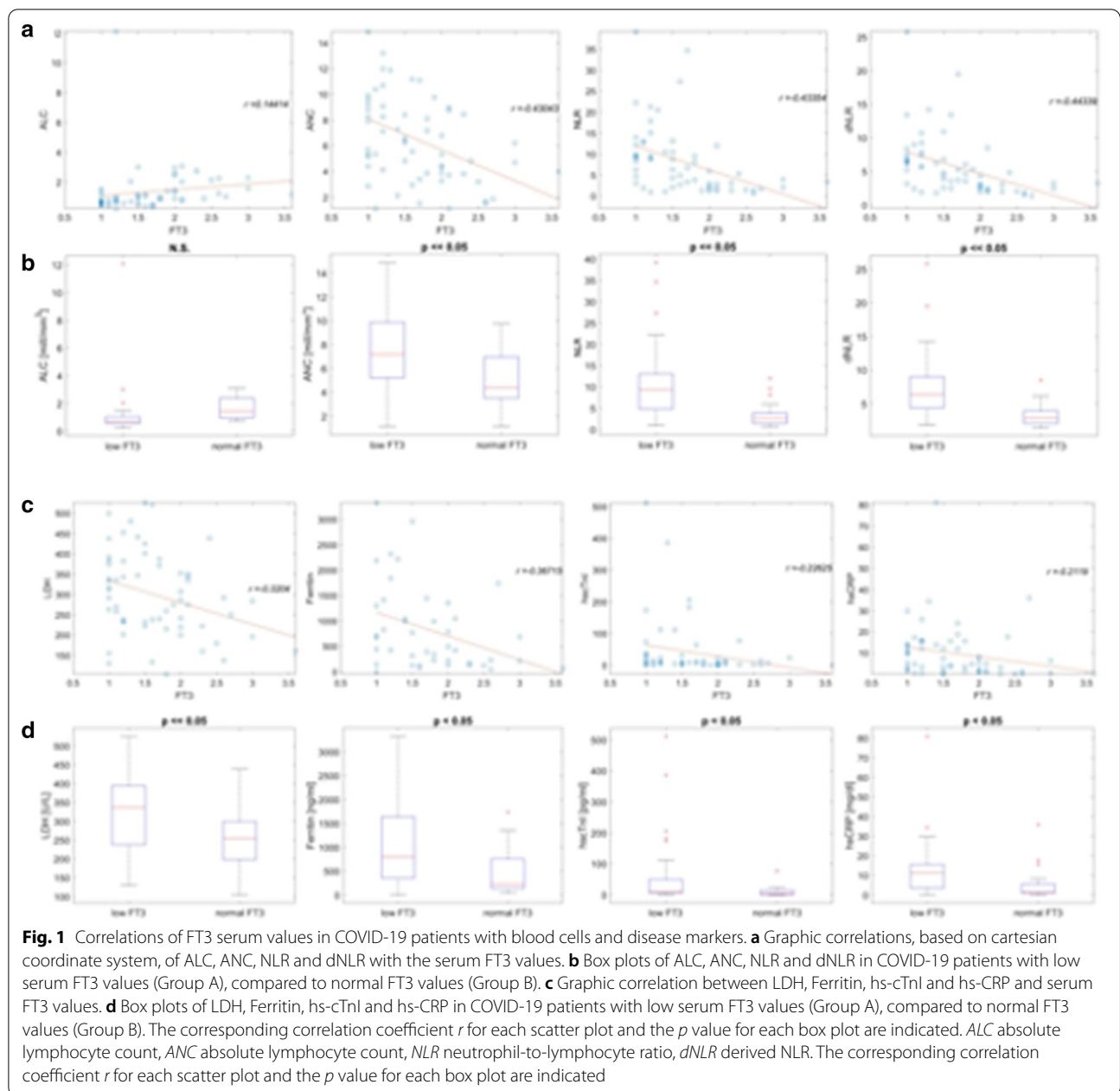
Then we checked whether the FT3 values were associated with alterations in the serum levels of coagulation markers, namely the PT, the Fibrinogen and the D-Dimer. PT is above the normal range (PT > 13 s.) in 18 out of 32 patients (56.3%) in Group A and in 10 out of 24 patients (41.7%) in Group B. Mean Fibrinogen value is high in all our COVID-19 patients. Its levels are different in the two Groups, with higher values in Group A patients compared to Group B. The mean serum levels of the D-dimer are also increased in our COVID-19 patients and much higher values are detected in Group A patients, compared to Group B. We detected a correlation between the FT3 values and the Fibrinogen (Additional file 2: Fig. S2) and the Fibrinogen values are higher in patients with low FT3 serum values (Table 3).

Table 3 Severity indexes of the disease in our COVID-19 patients

Severity indexes	COVID-19 patients			P value
	All patients (n = 62)	Group A (n = 38) FT3 ≤ 1.7 pg/ml	Group B (n = 24) FT3 > 1.7 pg/ml	
Thyroid function				
FT3 (pg/ml)	1.7 ± 0.6	1.2 ± 0.2	2.1 ± 0.6	≪ 0.005
FT4 (ng/dl)	1.1 ± 0.2	1.0 ± 0.3	1.1 ± 0.1	NS
TSH (μIU/ml)	1.0 ± 0.9	0.7 ± 0.8	1.3 ± 1.1	0.01
Hemocromocytometric parameters				
RBC (× 10 ⁶ cells/μl)	4.0 ± 0.7	3.9 ± 0.7	4.2 ± 0.7	0.06
HGB (g/dl)	11.9 ± 1.9	11.5 ± 1.9	12.5 ± 1.9	0.03
WBC (× 10 ³ cells/μl)	8.6 ± 3.9	9.2 ± 4.4	7.7 ± 2.9	0.07
ANC (× 10 ³ cells/mm ³)	6.5 ± 3.4	7.6 ± 3.5	5.0 ± 2.5	0.002
ALC (× 10 ³ cells/mm ³)	1.4 ± 1.6	1.1 ± 1.9	1.7 ± 0.8	0.09
NLR	8.2 ± 7.9	11.2 ± 8.7	3.4 ± 2.8	0.00004
dNLR	5.8 ± 4.4	7.4 ± 4.8	3.3 ± 1.6	0.0001
Lymphocytes subpopulations				
CD45+ (cells/μl)	1034 ± 1147.6	902.4 ± 1235.3	1341.3 ± 871.6	NS
CD19+ (cells/μl)	251.9 ± 973.4	293.4 ± 1164.2	155.9 ± 135.0	NS
CD3+ (cells/μl)	629.9 ± 500.8	467.1 ± 234.9	1006.4 ± 721.5	0.0001
CD45+CD3+CD8+ (cells/μl)	211.8 ± 169.4	174.9 ± 134.5	297.2 ± 212.1	0.007
CD45+CD3+CD4+ (cells/μl)	402.2 ± 366.2	282.2 ± 158.7	686.2 ± 513.9	0.0005
CD4+/CD8+ ratio	2.4 ± 1.6	2.22 ± 1.61	2.88 ± 1.6	0.09
CD3–CD16+CD56+ (cells/μl)	115.3 ± 83.5	99.7 ± 60.7	150.9 ± 115.7	0.02
Serum markers of inflammation				
APC (× 10 ³ cells/μl)	215.1 ± 111.2	186.0 ± 96.4	261.1 ± 119.1	0.005
PLR	231.4 ± 136.4	254.0 ± 131.2	195.5 ± 139.3	0.05
PCT (ng/ml)	3.3 ± 17.2	4.8 ± 20.9	0.2 ± 0.3	NS
hs-CRP (mg/dl)	10.0 ± 13.1	12.7 ± 14.5	5.1 ± 8.0	0.006
Serum markers of tissue damages				
CK (U/l)	81.0 ± 98.7	82.1 ± 104.1	79.4 ± 91.6	NS
CK-MB (ng/ml)	1.2 ± 1.4	1.4 ± 1.7	1.1 ± 0.8	NS
Bilirubin (mg/dl)	0.6 ± 0.6	0.7 ± 0.7	0.5 ± 0.2	NS
hs-cTnl (pg/ml)	41.0 ± 93.3	59.8 ± 110.8	9.7 ± 16.5	0.02
Creatinine (mg/dl)	1.2 ± 1.4	1.4 ± 1.7	0.9 ± 0.4	0.09
Ferritin (ng/ml)	769.2 ± 743.2	1085.6 ± 950.8	495.5 ± 482.8	0.009
LDH (U/l)	300.1 ± 101.8	328.2 ± 105.7	253.6 ± 79.1	0.002
Serum coagulation markers				
Fibrinogen (mg/dl)	555.2 ± 251.8	602.4 ± 269.0	476.5 ± 202.9	0.03
PT (s)	13.8 ± 4.7	13.3 ± 1.7	14.6 ± 7.2	NS
D-dimer (ng/ml)	857.8 ± 1055.8	1038.6 ± 964.6	582.3 ± 1050.1	0.04
Serum immunological markers				
IL-6 (pg/ml)	181.3 ± 456.7	232.1 ± 580.6	103.9 ± 94.4	NS
Severity scores of lung damage				
LIPi score	1.5 ± 0.6	1.8 ± 0.4	1.2 ± 0.6	0.00003
Radiological severity scores of lung damage				
TSS score	8.1 ± 4.3	9.6 ± 3.9	5.7 ± 3.9	0.0004
Clinical severity score				
SOFA score	2.8 ± 1.8	3.3 ± 1.7	2.3 ± 1.7	0.001

Data are reported for all patients and for patients with low FT3 values (Group A), compared to those with normal FT3 values (Group B). For each parameter the mean values ± the standard deviations are reported. The p values are indicated as a measure of the levels of significance of the differences among the two groups

NS not significant



Serum IL-6 values

We found values of IL-6 above the upper normal limit in almost all patients, with large variability among them. No correlation is detectable between FT3 values and IL-6. The mean IL-6 values in Group A is slightly elevated compared to patients in Group B, but the difference is not significant.

Flow cytometric analysis (FCA)

One of the hallmarks of the COVID-19 is represented by the marked lymphocytopenia [24]. To further investigate

the relationship between serum FT3 values and lymphocytes, we performed FCA to analyze the composition of the lymphocyte subpopulations in the peripheral blood of our patients and the results are shown in Table 3. We observed a marked reduction affecting many lymphocyte subpopulations in both groups of patients. The absolute total count of T lymphocytes and both CD8+ and CD4+ are markedly reduced and such reduction is more severe in the CD4+ subpopulation. The NK cells are only slightly reduced. We didn't observe any significant variation in the B lymphocytes. We detected a

direct correlation between serum FT3 levels and CD3+, CD45+CD3+CD8+ and with CD45+CD3+CD4+ lymphocytes (Fig. 2a, b). The analysis of the FCA results in the two groups of patients shows noticeable differences (Table 3; Fig. 2). Patients in Group A are characterized by a more severe reduction in the absolute total count of T lymphocytes, compared to patients in Group B. Patients with low FT3 levels show also a severe reduction in both CD4+ and in CD8+ lymphocytes. However, the reduction affects more the CD4+ subpopulation, with a reduced CD4+/CD8+ ratio observed in Group A, compared to Group B. In addition, a more significant reduction is observed in NK subpopulation in patients belonging to Group A compared to those belonging to

Group B. No differences between the two groups are visible in the absolute count of B lymphocytes. These results indicate a strong correlation between the reduction of FT3 serum levels and the reduction of serum T lymphocytes, especially affecting the CD4+ subpopulation (Fig. 2). FCA analysis of the different lymphocyte subpopulations, in representative cases of the two Groups of patients are shown (Fig. 2c, d) (Additional file 3: Fig. S3b).

Lung Immune Prognostic Index

Since both dNLR and LDH are inversely correlated with FT3 values in our COVID-19 patients, we checked whether the combination of both of them in the LIPI score could be also correlated with low FT3 values. LIPI

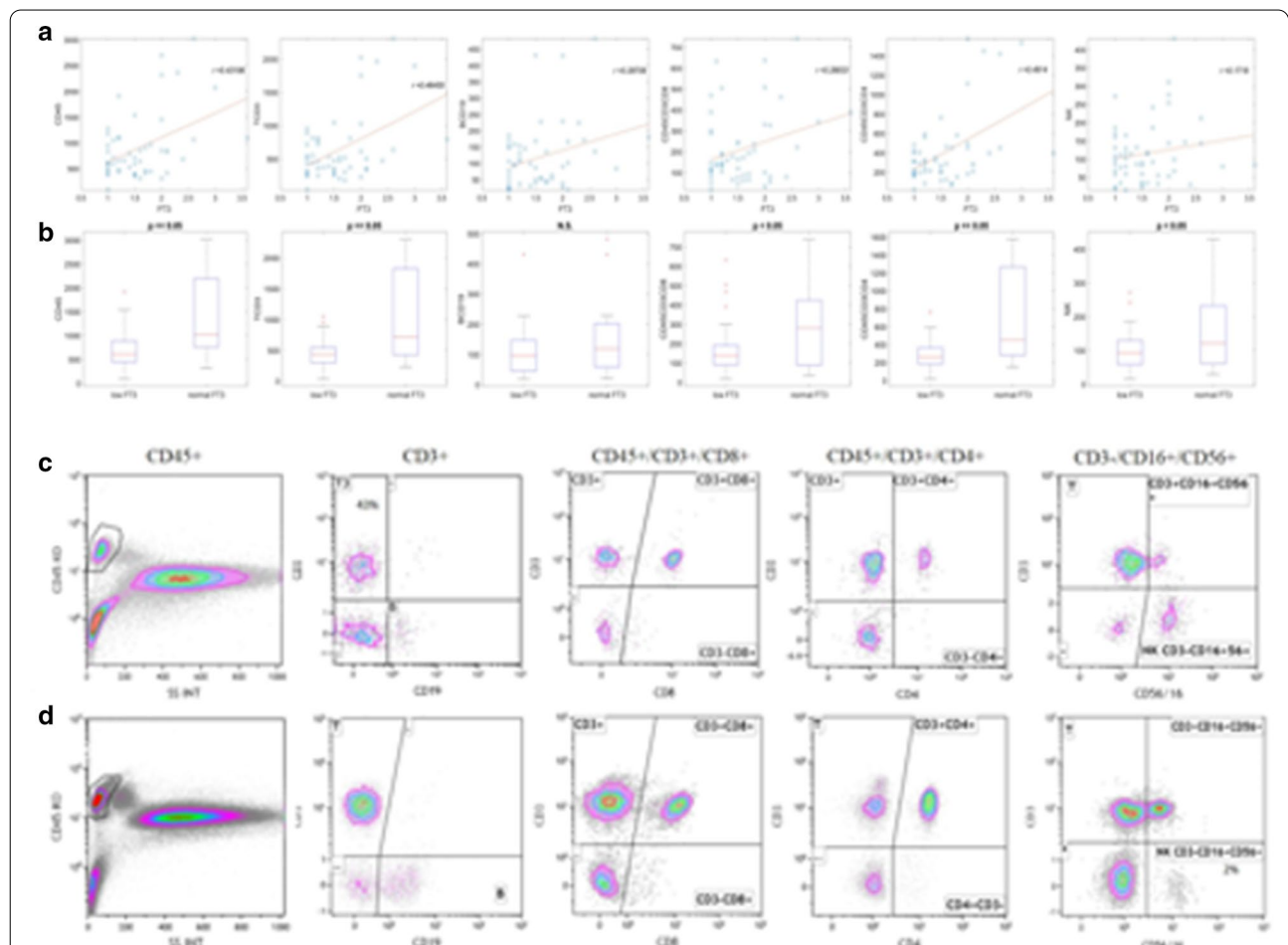


Fig. 2 Correlations of FT3 serum values in COVID-19 patients with lymphocyte subpopulations. **a** Graphic correlation between CD45+, CD3+, CD19+, CD8+, CD4+ and NK cells and serum FT3 values. **b** Box plots of CD45+, CD3+, CD19+, CD8+, CD4+ and NK cells in COVID-19 patients with low serum FT3 values (Group A), compared to normal FT3 values (Group B). The corresponding correlation coefficient *r* for each scatter plot and the *p* value for each box plot are indicated. **c** Representative images of Flow Cytometric Analysis (FCA) in COVID-19 patients using fluorescently-tagged monoclonal antibodies specific for CD45+, CD19+, CD8+, CD4+ and CD16+/CD56+ in COVID-19 in patients with low serum FT3 values (Group A). **d** FCA using fluorescently-tagged monoclonal antibodies specific for CD45+, CD19+, CD8+, CD4+ and CD16+/CD56+ in COVID-19 in patients with normal serum FT3 values (Group B)

score range from 0 to 2. The highest LIPI score of 2 is detected in 29 patients out of 38 (76.3%) in Group A, compared to 7 patients out of 24 (20.8%), in Group B. A higher LIPI score is observed in Group A, compared to Group B and, therefore, it appears to be strongly correlated with low FT3 values (Table 3).

Clinical severity scores

The mean SOFA score measured in our COVID-19 patients is reported in Table 3. Patients in Group A show a higher SOFA score compared to those in Group B. Low FT3 values are clearly associated with higher SOFA score.

Radiological severity scores of lung damage

The median TSS, evaluated on admission, are higher in patients with low FT3 values compared to those observed in patients with normal FT3 values. Therefore, on CT visual quantitative analysis, the most severe degrees of acute lung inflammation appear to be strongly associated with low FT3 values. Representative CT images of patients with mild, moderate and severe degrees of lung inflammation are reported (Fig. 3).

Multivariate analysis

Variables with a *p* value of <0.05 by univariate analysis were entered into the multivariate regression model. The

multivariate linear regression analysis shows that there is a very high degree of correlation between FT3 values and hemocromocytometric and FCA parameters, including WBC, ANC, ALC and the T cells expressing the CD3+, CD4+CD8+, with a very high values of the coefficient of determination *R*² and of the significance (Table 4). When we graphically correlated the serum FT3 values with the clinical and radiological scores, namely the SOFA and the TSS, in a 3D scatter plot diagram, we observed a clear correlation among them (Fig. 4).

CytoF analysis

There is an overall concordance among the results obtained by CyTOF analysis, and those obtained by FCA, with some minor differences (Fig. 5). In agreement with the results of FCA, we observed a reduction in the total lymphocytes (CD45+) in patients with Low T3 syndrome, compared to patients with normal T3 serum levels. Such reduction is not observed in COVID-19 patients with low FT3 serum values who are affected by coexistent hematological malignancy. The B lymphocytes (CD19+) are not increased in all COVID-19 patients with low FT3 serum values but only in those that have coexistent hematological malignancy (Fig. 5d). CyTOF analysis indicates that, in disagreement with FCA results, low FT3 serum values are associated with an increase in the NK

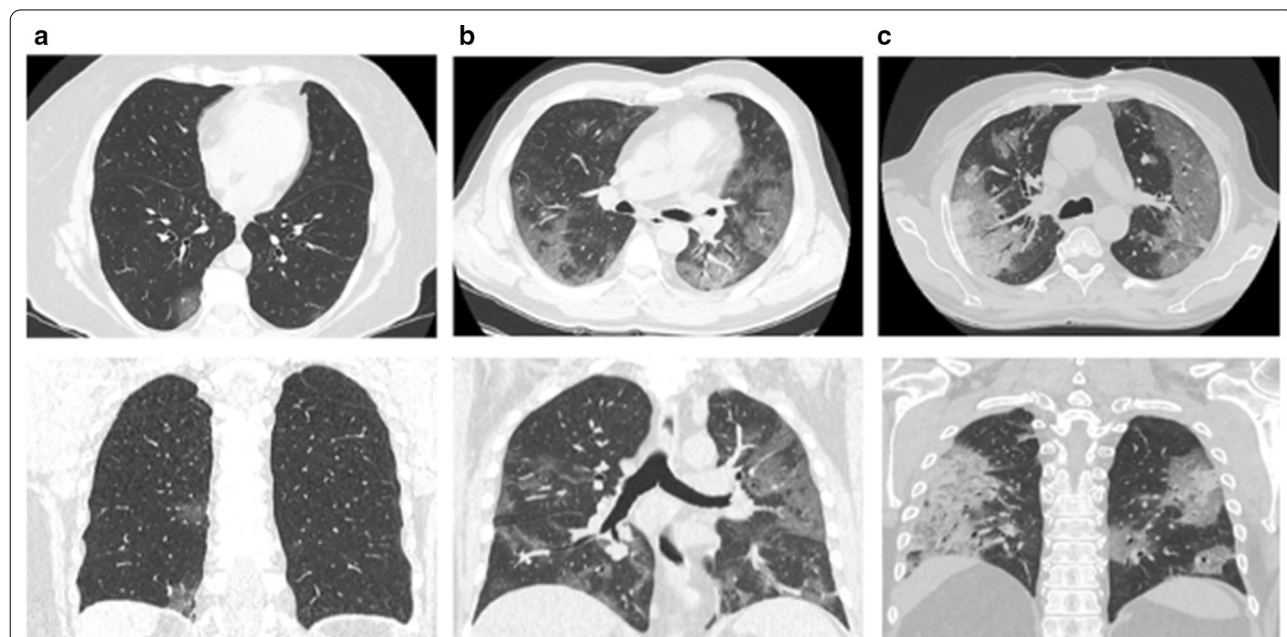
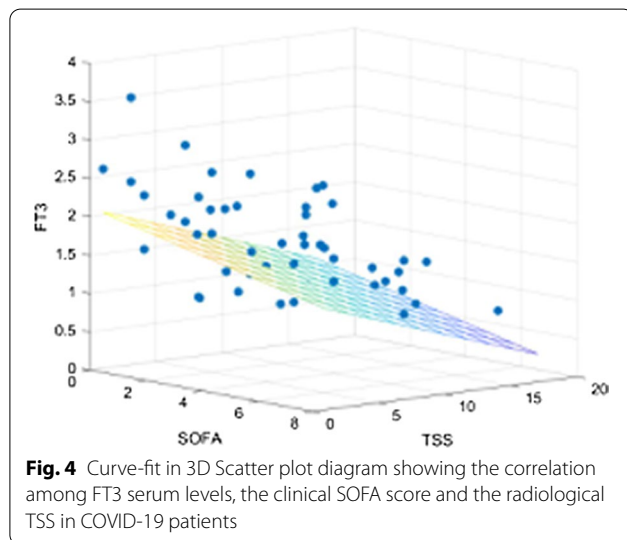


Fig. 3 COVID-19 interstitial lung pneumonia radiologic images in patients with or without Low T3 syndrome. Representative CT images of different degrees of severity in a patient with normal FT3 value (a) and in two patients with low FT3 levels (b, c). a Minimal involvement of right inferior lobe. Two ground glass opacity in the subpleural space. b Moderate involvement of both lungs. Diffuse ground glass opacities, with peripheral distribution and subsegmental vessel enlargement. c Severe involvement of both lungs. Diffuse ground glass opacities, especially with peripheral distribution. Consolidations are also detected, mostly with peripheral distribution, in right upper lobe posterior segments. For each case both axial and coronal sections are shown

Table 4 Multivariate analysis of the severity disease indexes that showed the highest significant differences at the univariate analysis

Severity disease indexes	R ²	95% confidence interval	Standard error	P value
Hemocromocytometric and flow cytometry				
WBC	0.99	−0.26 to 0.66	0.23	<0.0001
ANC	0.99	−0.73 to 0.21	0.23	
ALC	0.97	−0.73 to 0.25	0.24	
CD3+	0.99	−0.01 to 0.01	0.01	
CD45+CD3+CD8+	0.96	−0.01 to 0.01	0.01	
CD45+CD3+CD4+	0.99	−0.01 to 0.01	0.01	
Markers of inflammation/coagulation				
APC	0.37	0.01 to 0.01	0.01	<0.0001
PLR	0.42	−0.01 to −0.01	0.01	
hs-CRP (mg/dl)	0.10	−0.01 to 0.01	0.01	
Fibrinogen (mg/dl)	0.23	−0.01 to 0.01	0.01	
D-dimer (ng/ml)	0.09	−0.01 to 6.6	6.98	
Markers of tissue damages				
hs-cTnl (pg/ml)	0.14	−0.01 to 0.01	0.01	0.0001
Creatinine (mg/dl)	0.15	−0.38 to 0.40	0.19	
Ferritin (ng/ml)	0.44	−0.01 to 0.01	0.01	
LDH (U/l)	0.47	−0.01 to 0.01	0.01	

The coefficient of determination R², the 95% confidence interval, the standard error and the p values are reported



cells (CD3−/CD56+), both the early and late subtypes (Fig. 5e), and an increase in the Monocytes (CD14+) too, that especially affects the classical subpopulation (Fig. 5f). These alterations are not seen in COVID-19 patients with hematological malignancies. Compared to COVID-19 patients with normal FT3 serum values, patients with low FT3 serum values show reduced CD4+ and CD8+ T lymphocytes at CyTOF analysis and these results are in agreement with those observed at FCA. We don't observe any significant difference at CyTOF

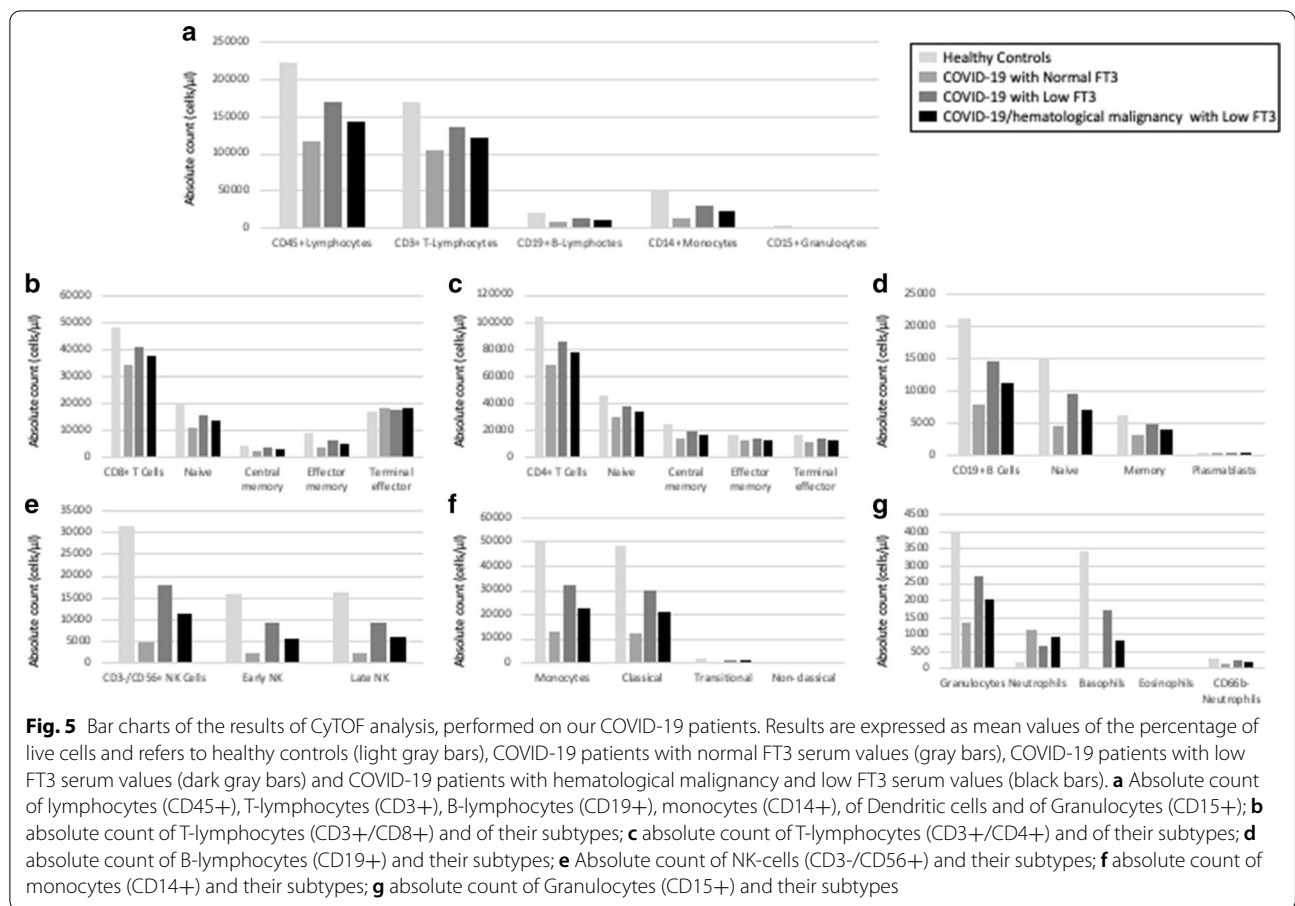
analysis in the absolute count of Treg, γδ T cells and of dendritic cells. A graphical representation of the CyTOF data regarding our COVID-19 patients is reported in the Maxpar® Pathsetter™ Cen-se™ plot (Fig. 6).

Multiplex cytokine analysis

Circulating cytokine analysis indicates that COVID-19 patients show an increase in many different cytokines and that their levels are influenced in COVID-19 patients by the occurrence of the low T3 syndrome (Fig. 7). We found a marked increase in the level of IL-6 in patients with low FT3 serum value, compared to those with normal FT3 serum levels (Fig. 7c). This result correlates with IL-6 classical laboratory immunological dosage (Table 3). It is relevant to note that the effect of low FT3 serum values on some cytokine levels is increased when hematological malignancy coexists with COVID-19. In the two patients with COVID-19 and hematological malignancy, in fact, there is an additional increase in the levels of IL-1ra, IP-10, MCP-1 and MIP-1a (Fig. 7b, d–f). The increase of these cytokines, observed in these patients, indicates that they may represent new targets of TH action, involved in the immune response to both COVID-19 and hematological malignancy.

NanoString analysis

Single cell based NanoString analysis indicates that COVID-19 patients with low FT3 serum values and those with normal FT3 values are clearly differentiated



in the principal component analysis (PCA), with a different location in the plot. COVID-19 patients with normal FT3 serum values are located in the left side, while those with low FT3 serum values are located in the right sides respectively (Fig. 8a). Analysis of the genes that are mostly deregulated indicates that three genes are significantly upregulated and one is downregulated in patients with low serum FT3 levels, compared to those with normal FT3 ones (Fig. 8b). The upregulated genes are the CD38, the IFIT3 and the CD78B, while the downregulated is the NLRP3. In this latter case there is a highly statistically significant difference between the two groups of patients. The differences in the expression levels of these four genes in COVID-19 patients with low or normal FT3 serum values, compared to our control group of 2 non-COVID-19 patients, are reported in the box-plot analysis (Fig. 8c). The expression levels of these genes in the group of non-COVID-19 patients are similar to those observed in the group of COVID-19 patients with normal FT3 levels, but they clearly differ from those observed in the COVID-19 group of patients with low FT3 serum values. A more pronounced deregulation in these genes is observed when COVID-19 is associated with

hematological malignancies. In particular, in the patient with COVID-19 and HD the expressions of the CD38 and of the IFIT3 genes are strongly increased, while in the patient with COVID-19 and CLL they are both normally expressed at a level comparable to that observed in the COVID-19 patients without the Low T3 syndrome. On the other hand, the patient with COVID-19 and HD doesn't show the reduction in the expression level of the CD78B gene, seen in the other COVID-19 patients with the Low T3 Syndrome, including the patient with CLL, and the expression level of this gene is unchanged. Such results indicate that a specific pattern of gene expression is associated with THs action in COVID-19 with coexistent hematological malignancies. The down-regulation of CD79B expression appears to be specifically involved in HD, while the downregulation of both CD38 and IFIT3 appears to be specifically involved in the CLL.

Discussion

The euthyroid sick syndrome (ESS) is a “hypothyroidic” condition that occurs in the absence of overt thyroid disease [25], reported many years ago in patients with systemic nonthyroidal illnesses (NTIs) [26–28], particularly

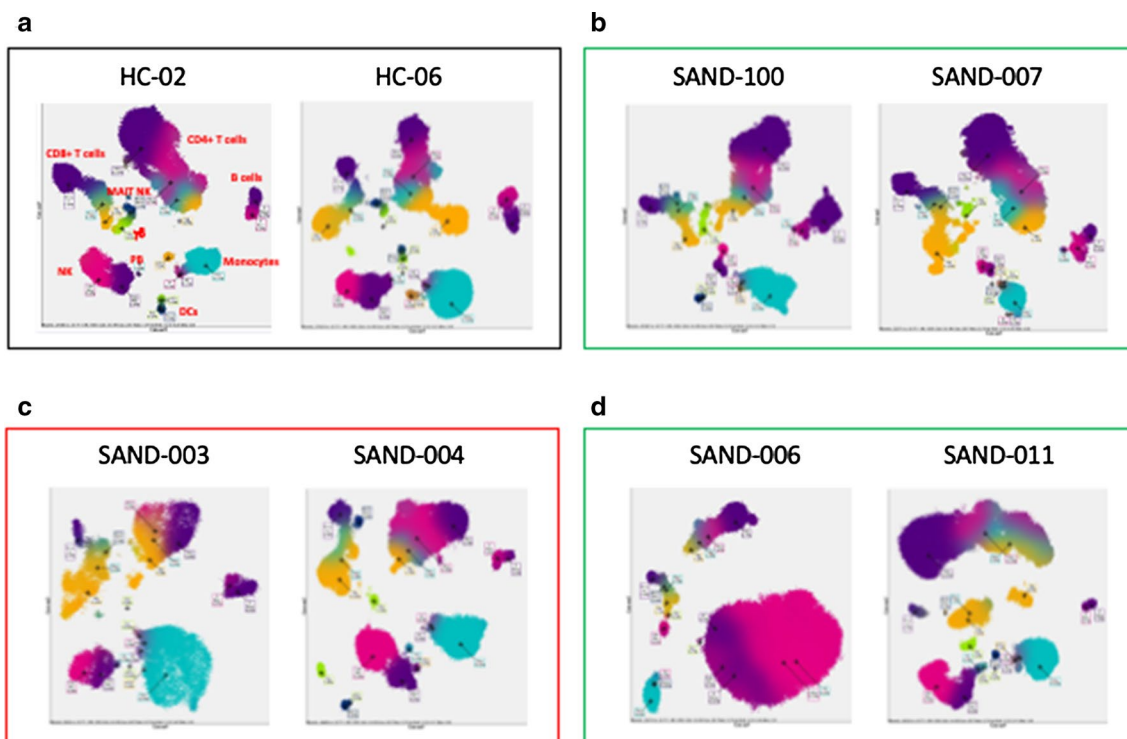
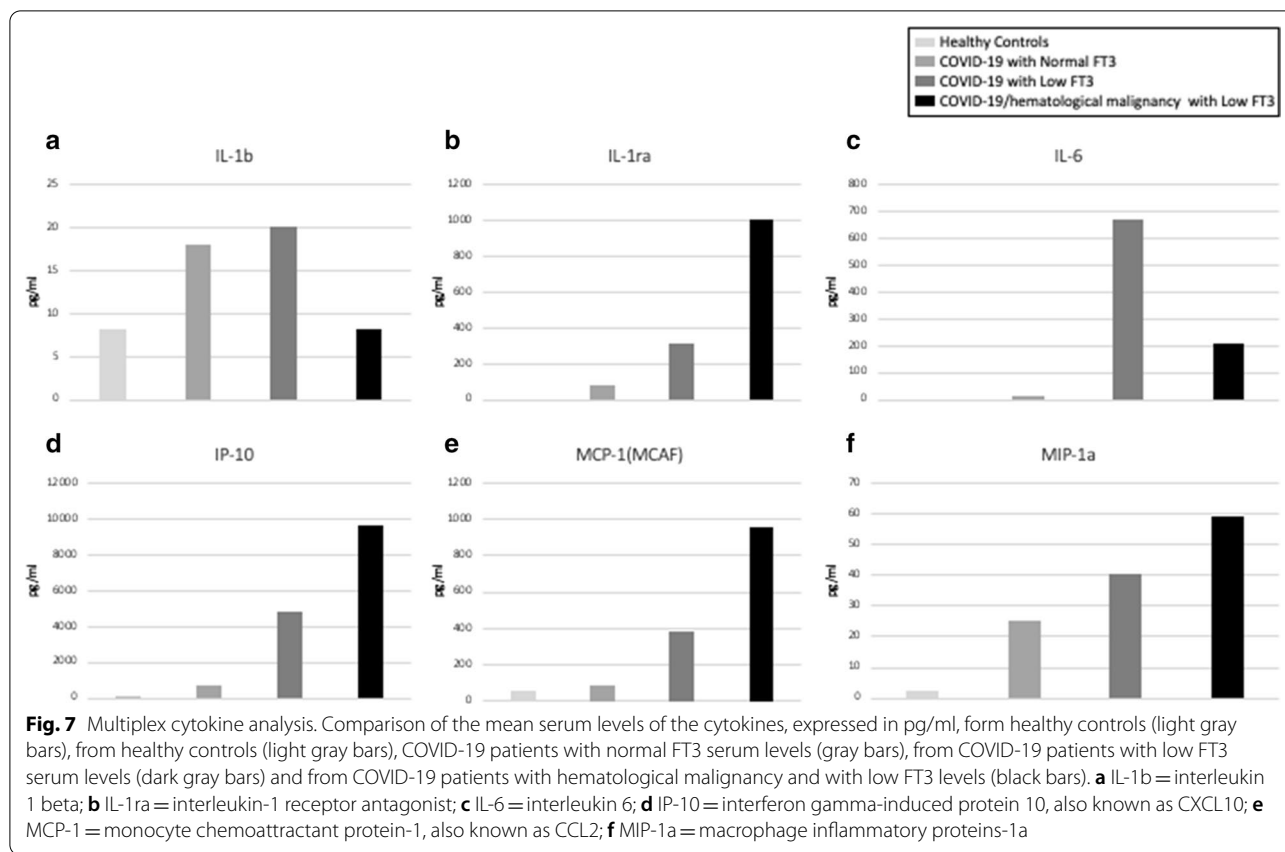


Fig. 6 Pathsetter Cen-se™ plot of the CyTOF data of healthy controls (HC), COVID-19 patients/normal FT3, COVID-19 patients/low FT3 and COVID-19 with hematological malignancy/low FT3 serum values. COVID-19 patients exhibit peculiar differences in the quantity of the different immune cell subpopulations in relation to FT3 serum levels and to the presence of hematological malignancy. **a** Healthy controls (HC); **b** COVID-19 patients with normal FT3 serum values; **c** COVID-19 patients with low FT3 serum values; **d** COVID-19 with hematological malignancy and with low FT3 serum values

those admitted to intensive care units [29]. These patients frequently present a fall in serum T3 levels that may be accompanied by a drop in the serum T4 levels. Serum TSH is usually inappropriately normal or slightly increased, but it may be also decreased. A reduced level of serum total T3 is rather frequent among hospitalized patients [30]. It is generally accepted that it represents an adaptive state of thyroid hormone (TH) economy. It has been associated with the severity of the case [31] and is considered a strong prognostic predictor of death in patients with heart disease [32]. A low serum T3 level predicts increased mortality also in patients with liver cirrhosis, advanced congestive heart failure [33, 34] and it is a strong predictor of poor prognosis in several other systemic illnesses, including surgery, multiple trauma, respiratory failure, septic shock, cerebrovascular diseases, cardiovascular diseases and severe burns [35–40]. Low T3 Syndrome was found to be a strong predictor of poor outcomes also in patients with community-acquired pneumonia [41] and in COVID-19 patients too [6]. Low T3 syndrome is also associated with metastasized cancer in hospitalized older population [42] and it is considered a poor prognostic factor for lung [43] and breast cancers

[44]. The clinical and prognostic relevance of the Low T3 syndrome was reported also in different lymphoproliferative diseases [7–9].

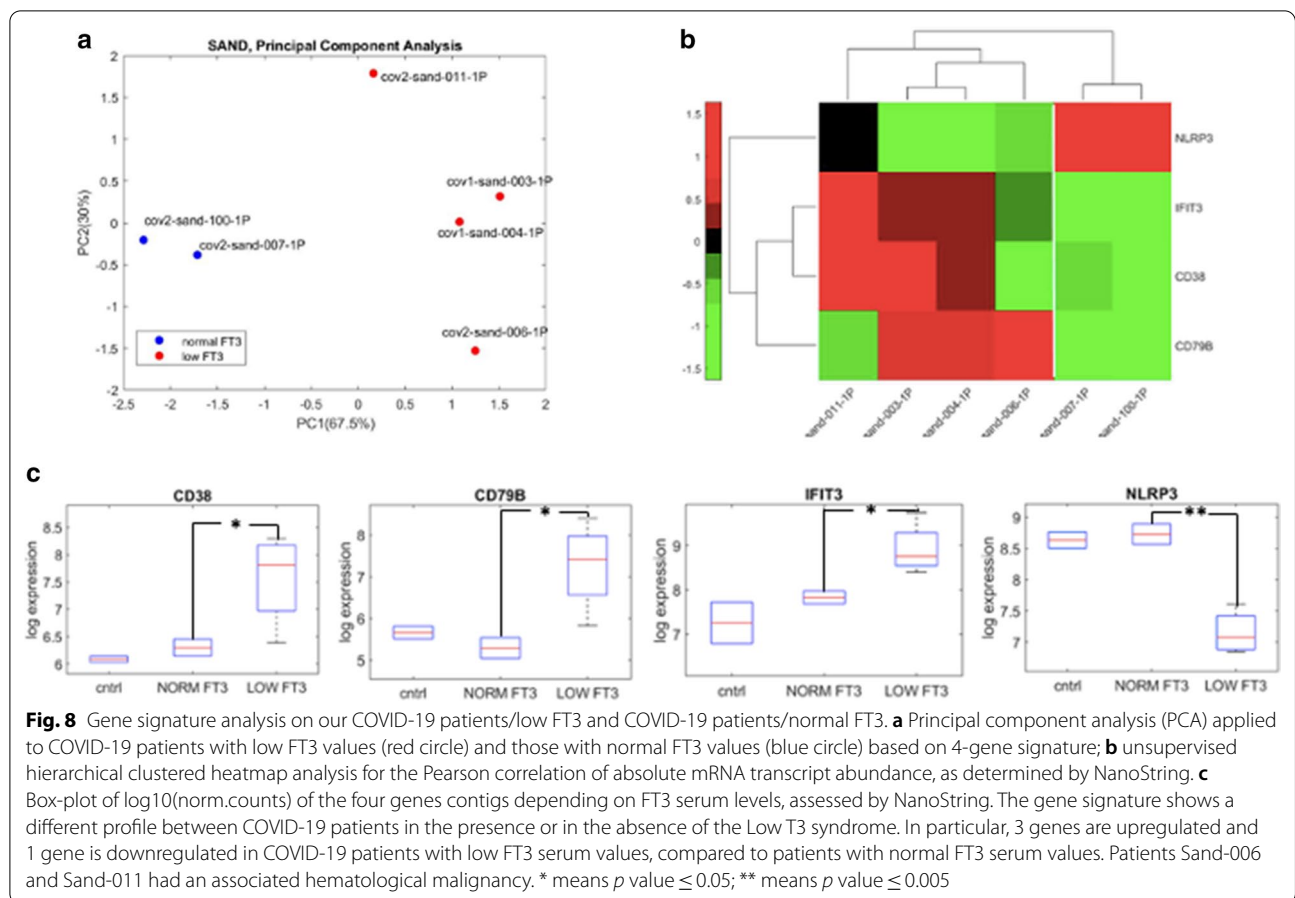
THs play essential roles in both the innate and adaptive immune responses [45]. On the other hand, many proinflammatory cytokines could indirectly influence TH synthesis by lowering the serum TSH levels [46–48]. In this regard, a strong correlation has been previously reported between IL-6 and thyroid function and, in particular with the ESS [49]. IL-6 is elevated in the serum of COVID-19 patients, especially in those presenting with severe disease, as part of a cytokine storms [50]. In agreement with previous observations, we found increased levels of IL-6 in almost all patients. Patients belonging to Group A show higher values compared to those in Group B, but there is high variability among them and the difference is not statistically significant. In agreement, multiplex cytokine analysis indicates that IL-6 is highly increased in COVID-19 patients with low FT3 serum values (Fig. 7). In these experiments there is also a marked increase in the levels of IL-1ra, IP-10, MCP-1 and MIP-1a in patients with low FT3 serum values, compared to patients with normal FT3 serum values. The increase is much higher in



patients with low FT3 and COVID-19 associated hematological malignancy. This observation suggests that such cytokine may be new targets of TH action on the immune cells and may play a role in the immune response to COVID and to hematological malignancy.

In all our patients there is a slight reduction in the absolute number of RBC and in the hemoglobin (Table 3). Such reduction is more evident in patients with low FT3 levels compared to those with normal levels of FT3 values. This finding is in agreement with the reported effect of THs on erythrocyte maturation [51]. However, the FT3 serum values mostly correlate with total WBC and lymphocyte subpopulations. An elevated ANC predicts ongoing inflammation and a decreased ALC is considered to be an indicator of poor prognosis, so a combination of these two measures, namely the NLR, is generally accepted to be predictive of an inflammatory situation [52] and of a more severe clinical condition of COVID-19 patients as well [53]. In our COVID-19 patients, an increased NLR correlates with the low FT3 serum levels. Such correlation appears much stronger when we consider the lymphocyte subpopulations and, more specifically, the T helper-inducer cells. Currently, limited information is available on the changes in lymphocyte

subpopulations in patients affected by COVID-19 [54]. A significantly decreased number of T cells is considered a severity marker of the disease [55]. Both helper-inducer T cells and suppressor-cytotoxic T cells are reported to be below normal levels. However, lower levels of helper-inducer T cells are observed in the more severe group of patients. This is in agreement with our observations. We observed a more pronounced reduction of helper-inducer T cells in Group A patients, which are also characterized by higher SOFA and TSS scores, indicating a more severe disease. Single cells-based CytTOF analysis, performed in the small group of patients, confirms the reduction in the CD8+ and in the CD4+ T lymphocyte subpopulations, observed by FCA in COVID-19 patients with low FT3. Mass cytometry indicates that there is an increase in the CD4+ T lymphocytes in COVID-19 and associated hematological malignancy, due to an increase in the naïve subpopulation. The NK cells are increased too, with a relevant increase of both early and late types and this result is different from that observed by FCA, where the NK cells were reduced in patients with low FT3 serum levels. Mass cytometry has essentially the same workflow as conventional FCA and it has been recently compared to FCA and validated for its application in human oncology clinical trials [56].



Considering all these data, we can deduce that reduced FT3 levels can be considered as a severity disease biomarker of COVID-19. Our results are in agreement with those recently reported indicating reduced levels of FT3 serum levels as a prognostic tool for disease severity in the early presentation of COVID-19 [57]. It is interesting to observe that COVID-19 may even be responsible for the occurrence of a subacute thyroiditis, as recently reported in two reports [58, 59]. The potential use of treatment with intravenous high dose of T3 is under investigation in a new phase II randomized, double blind, placebo controlled trial (Thy-Support, ClinicalTrials.gov Identifier: NCT04348513) for enhancing recovery of critically ill COVID-19 patients [60]. The mechanism that is behind the T3 reduction in critical illness, as well in malignancies, is still under debate. Our study indicates that there are some possible targets of T3 action that are deregulated in COVID-19 patients showing the typical laboratory asset of the Low T3 syndrome, compared to COVID-19 patients that had normal FT3 serum values. We observed a different gene expression levels in the two patients that, in addition to the COVID-19, had hematological malignancies. Low T3 syndrome appears

to be correlated not only with severity of COVID-19 but it is involved also in the mechanism of lymphoproliferative disorders that coexist with COVID-19. Thanks to NanoString analysis we identified a limited set of genes, all involved in immune reaction and expressed in immune cells, that may represent new potential targets of TH action on the immune system. The CD38, also known as cyclic ADP ribose hydrolase, is a glycoprotein that is present on the surface of many immune cells, including the CD4+, the CD8+, the B lymphocytes and the natural killer cells. It can function either as receptor or as an enzyme [61]. It is a well-recognized marker in leukemias, in myelomas and in different solid tumors [62–64]. CD 38 is a therapeutic target for many different hematological malignancies and there is a comprehensive list of monoclonal antibodies directed against the CD38 have been produced and approved. They have been designed to target the CD38, such as the daratumumab (Darzalex, Janssen Biotech, Inc. Horsham, PA), the daratumumab/hyaluronidase (Darzalex Faspro, Janssen Biotech, Inc. Horsham, PA), and the isatuximab (Sarclisa, Sanofi-Aventis, Bridgewater, NJ), or they are CD30-directed Antibody Drug conjugate (ADC), meaning that

they consist of a targeted therapy monoclonal antibody and an antineoplastic (chemotherapy) agent that work together to destroy cancer cells, such as the brentuximab vedotin (Adcetris, Seattle Genetics, Inc. Bothell, WA). We detected an increased CD38 expression level in our patient affected by COVID-19 and a coexistent HD but not in the other patient that was affected by COVID-19 and a coexistent indolent CLL. The IFIT3 (Interferon Induced Protein With Tetratricopeptide Repeats 3) is a IFN-induced antiviral protein which acts as an inhibitor of cellular as well as viral processes, cell migration, proliferation, signalling, and viral replication. IFIT3 was highly upregulated in a human thyroid follicle culture system upon stimulation with a chemical analog of viral double-stranded RNA (dsRNA) to mimic viral infection [65]. CD79B, also known as B29 protein, is a component of the multimeric complex of the B lymphocyte antigen receptor [66]. It is expressed in the lymphocytes of patients with more advanced stages of CLL [67]. It represents a therapeutic target for the treatment of adult patients with relapsed or refractory diffuse large B-cell lymphoma and a specific monoclonal antibody has been product for this purpose. The Polatuzumab vedotin-piiq (POLIVY, Genentech, Inc. South San Francisco, CA) is an antibody–drug conjugate, composed of a monoclonal antibody against CD79B, in combination with bendamustine and a rituximab product. The NLRP3 is expressed predominantly on the macrophages and is considered a major component of the so-called inflammasome [68, 69]. NLRP3 plays a critical role for host immune defences against bacterial, fungal, and viral infections. NLRP3-induced pyroptosis and IL-1 β /18 secretion is linked to various diseases. There are various inhibitors that specifically target the NLRP3 inflammasome [70]. We found that these genes are differentially regulated in COVID-19 patients in relation to the occurrence of the Low T3 Syndrome and to the presence of a hematological malignancy. Our study underlines the possible correlation among the immune response to viral infection, the thyroid function and the hematological malignancy and identifies these genes as new potential diagnostic prognostic and therapeutic targets for both COVID-19 and lymphoproliferative disorders. None of these genes has been previously reported to be regulated by THs. Reduced levels of FT3 in our COVID-19 patients affect differently the expression levels of these genes in the two lymphoproliferative diseases, suggesting that they act in a specific way and they depend on the type of the malignancy and possible on its stage. The major advantage of our study relies on the use of highly accurate methods, performed at the single cell level, to investigate the immunoprofiling and the gene expression patterns of COVID-19 patients with and without reduced

FT3 serum levels. The major limitation is related to in the small number of samples that we have analyzed with these methods. Therefore, our observation needs to be confirmed in a larger population of COVID-19 affected patients.

Conclusions

Our data, indicate that thyroid function alterations are frequently observed in the acute phase of COVID-19 disease. In these patients, low FT3 serum values appear to be associated with the severity serological indexes of the disease and, in particular, with an increase in the serum levels of markers of coagulation, inflammation and tissue damages. The strongest correlation is observed with increased NLR and dNLR ratios and with reduced level of T lymphocytes, especially of the helper-inducer T cell subpopulations. The low FT3 values are also associated with the clinical and radiologic scores of disease severity and can be considered as a prognostic marker of COVID-19. According to the results of our study, we should add the thyroid to the other endocrine glands, known to influence COVID-19 outcome, as reported by the European Society of Endocrinology [71]. FCA, CyTOF and multiplex cytokine analyses indicate that specific subset of circulating immune cells and cytokines are modulated by the T3 in COVID-19 patients and, finally, NanoString analysis allows us to identify four genes, responsive to THs, that may represent new diagnostic, prognostic and therapeutic targets in both COVID-19 and hematological malignancies.

Abbreviations

COVID-19: Coronavirus disease 2019; HD: Hodgkin disease; CLL: Chronic lymphocytic leukemia; MCcHL: Mixed Cellularity classical Hodgkin Lymphoma; SOFA: Sequential Organ Failure Assessment score; LIPI: Lung Inflammation Prognostic Index; TSS: Total Severity Score; CyTOF: Cytometry by Time-of-Flight; rRT-PCR: Real-time reverse-transcription polymerase chain reaction; FCA: Flow Cytometric Analysis; PCT: Procalcitonin; hs-CRP: High-sensitive C Reactive Protein; PT: Prothrombin time; LDH: Lactate DeHydrogenase; CK: Creatine Kinase; CK-MB: Creatine Kinase-Myocardial Band; hs-cTnI: Hypersensitive troponin I; IL-6: Interleukin-6; NLR: Neutrophil-to-lymphocyte ratio; dNLR: Derived neutrophil-to-lymphocyte ratio; PLR: Platelet-to-lymphocyte ratio; CT: Computerized tomography; PBMC: Peripheral blood mononuclear cells; HC: Healthy controls; Cen-se': Cauchy Enhanced Nearest-neighbor Stochastic Embedding; PCA: Principal component analysis; COPD: Chronic obstructive pulmonary disease; RBC: Red blood cells; WBC: White blood cell; PLT: Platelets; ANC: Absolute Neutrophil Count; ALC: Absolute Lymphocyte Count; APC: Absolute Platelet Count; TH: Thyroid hormone.

Supplementary Information

The online version contains supplementary material available at <https://doi.org/10.1186/s12967-021-02805-6>.

Additional file 1: Figure S1. a Graphic correlations between FT4 and TSH with serum FT3 values. **b** Box plot correlations between FT4 and TSH in COVID-19 patients with low serum FT3 values (Group A), compared to

normal FT3 values (Group B). The corresponding correlation coefficient r for each scatter plot and the p value for each box plot are indicated.

Additional file 2: Figure S2. **a** Graphic and **b** box plot correlations between FT3 serum values and several disease severity markers in COVID-19 patients. The corresponding correlation coefficient r for each scatter plot and the p value for each box plot are indicated.

Additional file 3: Figure S3. **a** Correlations of FT3 serum values in COVID-19 patients with blood cells and disease markers; **b** correlations of FT3 serum values in COVID-19 patients with lymphocyte subpopulations.

Acknowledgements

We are deeply grateful to the COVID-19 Sant'Andrea Group and in particular to Prof. Luciano De Biase, Prof. Paolo Martelletti, Prof. Antonio Aceti and to Prof. Monica Rocco for their support in the presentation of the study for the approval by our Institutional Review Board. The funder of the study had no role in study design, data collection, data analysis, data interpretation, or writing of the report. The corresponding author has full access to all the data in the study and has final responsibility for the decision to submit for publication.

Authors' contributions

SG, AT, AR, PA, CN, MD'A, collected and supervised the acquisition of clinical data of the patients. AP, GS, RA, IS, MS, performed, collected and analyzed clinical laboratory data. CDD, AL, performed and analyzed radiological exams. ADN, AT, analyzed histological and clinical data of the patients with hematological malignancies. MD'A, AR, AT, PM, LDB, CN, MR, PA, VS, RM, designed and supervised sample collections. LdL, CDV, VS, collected and processed the patient samples for experimental analysis. CDV, AS, LdL, MF, acquired, analyzed and interpreted experimental data. SS, RM, GP, GC, acquired and analyzed the data. conceptualized and designed the experiments. SS, RM, wrote the manuscript. All authors revised the final version of the manuscript. All authors read and approved the final manuscript.

Funding

This study was funded by Lazioinova Grant 2018 n.85-2017-13750 to Rita Mancini; PRIN Bando 2017 (Prot. 2017HWTP2K) to G. Ciliberto and R. Mancini; AIRC Investigator Grant 2020-2025 to Rita Mancini.

Availability of data and materials

The datasets used and/or analyzed during the current study are available from the corresponding author on reasonable request. All data generated or analyzed during this study are included in this published article and its Additional files.

Declarations

Ethics approval and consent to participate

A written informed consent was obtained by participant to the study. The study was approved by the Institutional Ethical Committee of our University La Sapienza of Rome, Italy (RIF. CE 5773_2020, Prot. # 52SA_2020, and its subsequent substantial amendment RIF. CE 5773_2020, Prot. # 171SA_2020), on the basis that it complied with the declaration of Helsinki and that the protocol followed existing good clinical practice guidelines.

Consent for publication

A written consent for publication stating that the details/images/videos will be freely available on the internet and may be seen by the general public was obtained by all participant to the study. However, images are entirely unidentifiable and there are no details on individuals reported within the manuscript.

Competing interests

There is no conflict of interest that could be perceived as prejudicing the impartiality of the research reported.

Author details

¹ Department of Clinical and Molecular Medicine, Sapienza University, Via di Grottarossa, 1035/1039, 00189 Rome, Italy. ² Laboratory of Biomedical Research, Niccolò Cusano University Foundation, Via Don Carlo Gnocchi, 3, 00166 Rome, Italy. ³ Division of Pneumology, Sant'Andrea Hospital,

Via di Grottarossa, 1035/1039, 00189 Rome, Italy. ⁴ Department of Medical and Surgical Sciences and of Translational Medicine, Sapienza University, Sant'Andrea Hospital, Via di Grottarossa, 1035/1039, 00189 Rome, Italy. ⁵ Health Management Director, Sant'Andrea Hospital, Via di Grottarossa, 1035/1039, 00189 Rome, Italy. ⁶ Department of Neuroscience, Mental Health and Sense Organs, Sapienza University, Sant'Andrea Hospital, Via di Grottarossa, 1035/1039, 00189 Rome, Italy. ⁷ Flow Cytometry Unit, Clinical Laboratory, Sant'Andrea Hospital, Via di Grottarossa, 1035/1039, 00189 Rome, Italy. ⁸ UOSD Oncogenomica ed Epigenetica, IRCCS-Regina Elena National Cancer Institute, Via Elio Chianesi 53, 00144 Rome, Italy. ⁹ Scientific Direction, IRCCS Regina Elena National Cancer Institute, Rome, Italy. ¹⁰ UOSD SAFU, IRCCS-Regina Elena National Cancer Institute, Via Elio Chianesi 53, 00144 Rome, Italy.

Received: 2 February 2021 Accepted: 23 March 2021

Published online: 01 April 2021

References

- Perlmans S. Another decade, another coronavirus. *NEJM*. 2020;382:760–2.
- Bornstein SR, Dalan R, Hopkins D, Mingrone G, Boehm BO. Endocrine and metabolic link to coronavirus infection. *Nat Rev Endocrinol*. 2020;16:297–8.
- Leow MKS, Kwek DSK, Ng AWK, Ong KC, Kaw GJL, Lee LSU. Hypocortisolism in survivors of severe acute respiratory syndrome (SARS). *Clin Endocrinol*. 2005;63(2):197–202.
- Wei L, Sun S, Xu C-H, Zhang J, Xu Y, Zhu H, Peh S-C, Korteweg C, McNutt MA, Gu J. Pathology of the thyroid in severe acute respiratory syndrome. *Hum Pathol*. 2007;38(1):95–102.
- Zhang Q-L, Ding Y-Q, Hou J-L, He L, Huang Z-X, Wang H-J, Cai J-J, Zhang J-H, Zhang W-L, Geng J, et al. Detection of severe acute respiratory syndrome (SARS)-associated coronavirus RNA in autopsy tissues with in situ hybridization. *Di Yi Jun Yi Da Xue Xue Bao*. 2003;23:1125–7.
- Chen M, Zhou W, Xu W. Thyroid function analysis in 50 patients with COVID-19: a retrospective study. *Thyroid*. 2020. <https://doi.org/10.1089/thy.2020.0363>.
- Gao R, Chen RZ, Xia Y, Liang JH, Wang L, Zhu HY, Zhu WJ, Fan L, Li JY, Yang T, Xu W. Low T3 syndrome as a predictor of poor prognosis in chronic lymphocytic leukemia. *Int J Cancer*. 2018;143:466–77.
- Mohn A, Di Marzio A, Cerruto M, Angrilli F, Fioritoni C, Chiarelli F. Euthyroid sick syndrome in children with Hodgkin disease. *Pediatr Hematol Oncol*. 2001;18:211–5.
- Gao R, Liang JH, Wang L, Zhu HY, Wu W, Wu JZ, Xia Y, Cao L, Fan L, Yang T, Li JY, Xu W. Low T3 syndrome is a strong prognostic predictor in diffuse large B cell lymphoma. *Br J Haematol*. 2017;177:95–105.
- World Health Organization. Laboratory testing for coronavirus disease (COVID-19) in suspected human cases: interim guidance, 19 March 2020. World Health Organization. CC, licence BY-NC-SA 3.0 IGO. WHO reference number: WHO/COVID-19/laboratory/2020.5; 2020.
- Zahorec R. Ratio of neutrophil to lymphocyte counts-rapid and simple parameter of systemic inflammation and stress in critically ill. *Bratisl Lek Listy*. 2001;102(1):5–14.
- Wood G, Grenader T, Nash S, Adams R, Kaplan R, Fisher D, Maughan T, Bridgewater J. Derived neutrophil to lymphocyte ratio as a prognostic factor in patients with advanced colorectal cancer according to RAS and BRAF status: a post-hoc analysis of the MRC COIN study. *Anticancer Drugs*. 2017;28(5):546–50.
- Balta S, Ozturk C. The platelet-lymphocyte ratio: a simple, inexpensive and rapid prognostic marker for cardiovascular events. *Platelets*. 2015;26(7):680–1.
- Gasparyan AY, Ayyavazyan L, Mukanova U, Yessirkepov M, Kitas GD. The platelet-to-lymphocyte ratio as an inflammatory marker in rheumatic diseases. *Ann Lab Med*. 2019;39(4):345–57.
- Kazandjian D, Gong Y, Keegan P, Pazdur R, Blumenthal GM. Prognostic value of the lung immune prognostic index for patients treated for metastatic non-small cell lung cancer. *JAMA Oncol*. 2019;5(10):1481–5.
- Mezquita L, Auclin E, Ferrara R, Charrier M, Remon J, Planchard D, Ponce S, Ares LP, Leroy L, Audigier-Valette C, et al. Association of the lung immune prognostic index with immune checkpoint inhibitor outcomes in patients with advanced non-small cell lung cancer. *JAMA Oncol*. 2018;4(3):351–7.

17. Zhou S, Wang Y, Zhu T, Xia L. CT features of coronavirus disease 2019 (COVID-19) pneumonia in 62 patients in Wuhan, China. *AJR*. 2020;214(6):1287–94.
18. Caruso D, Zerunian M, Polici M, Pucciarelli F, Polidori T, Rucci C, Guido G, Bracci B, de Dominicis C, Laghi A. Chest CT features of COVID-19 in Rome, Italy. *Radiology*. 2020. <https://doi.org/10.1148/radiol.2020201237>.
19. Li K, Fang Y, Li W, Pan C, Qin P, Zhong Y, Liu X, Huang M, Liao Y, Li S. CT image visual quantitative evaluation and clinical classification of coronavirus disease (COVID-19). *Eur Radiol*. 2020;25:1–10. <https://doi.org/10.1007/s00330-020-06817-6>.
20. Zhou F, Yu T, Du R, Fan G, Liu Y, Liu Z, Xiang J, Wang Y, Song B, Gu X, et al. Clinical course and risk factors for mortality of adult inpatients with COVID-19 in Wuhan, China: a retrospective cohort study. *Lancet*. 2020;395(10229):1054–62.
21. Horowitz A, Strauss-Albee DM, Leipold M, Kubo J, Nemat-Gorgani N, Dogan OC, Dekker CL, Mackey S, Maecker H, Swan GE, Davis MM, Norman PJ, Guethlein LA, Desai M, Parham P, Blish CA. Genetic and environmental determinants of human NK cell diversity revealed by mass cytometry. *Sci Transl Med*. 2013;5(208):208ra145.
22. Bagwell CB, Hunsberger B, Hill B, Herbert D, Bray C, Selvanantham T, Li S, Villasboas JC, Pavelko K, Strausbauch M, Rahman A, Kelly G, Asgharzadeh S, Gomez-Cabrero A, Behbehani G, Chang H, Lyberger J, Montgomery R, Zhao Y, Inokuma M, Goldberger O, Stelzer G. Multi-site reproducibility of a human immunophenotyping assay in whole blood and peripheral blood mononuclear cells preparations using CyTOF technology coupled with Maxpar Pathsetter, an automated data analysis system. *Cytometry B Clin Cytom*. 2020;98(2):146–60.
23. Massey FJ. The Kolmogorov–Smirnov test for goodness of fit. *J Am Stat Assoc*. 1951;46(253):68–78.
24. Wang D, Hu B, Hu C, Zhu F, Liu X, Zhang J, Wang B, Xiang H, Cheng Z, Xiong Y, Zhao Y, Li Y, Wang X, Peng Z. Clinical characteristics of 138 hospitalized patients with 2019 novel coronavirus-infected pneumonia in Wuhan, China. *JAMA*. 2020;323(11):1061–9.
25. Klein JR. The immune system as a regulator of thyroid hormone activity. *Exp Biol Med*. 2006;231(3):229–36.
26. Chopra IJ. Euthyroid sick syndrome: abnormalities in circulating thyroid hormones and thyroid hormone physiology in nonthyroid illness (NTI). *Med Ground Rounds*. 1982;1:201–12.
27. Wartofsky L, Burman KD. Alterations in thyroid function in patients with systemic illness: the “Euthyroid sick syndrome.” *Endocr Rev*. 1982;3(2):164–217.
28. Chopra IJ. Nonthyroidal illness syndrome or euthyroid sick syndrome? *Endocr Pract*. 1996;2(1):45–52.
29. Mebis L, Van Den Berge G. Thyroid axis function and dysfunction in critical illness. *Best Pract Res Clin Endocrinol Metab*. 2011;25(5):745–57.
30. Chopra IJ. Euthyroid sick syndrome: is it a misnomer? *JCEM*. 1997;82(2):329–34.
31. Iltumur K, Olmez G, Ariturk Z, Taskesen T, Toprak N. Clinical investigation: thyroid function test abnormalities in cardiac arrest associated with acute coronary syndrome. *Crit Care*. 2005;9(4):R416–424.
32. Iervasi G, Pingitore A, Landi P, Raciti M, Ripoli A, Scarlattini M, L’Abbate A, Donato L. Low-T3 syndrome: a strong prognostic predictor of death in patients with heart disease. *Circulation*. 2003;107(5):708–13.
33. Hepner GW, Chopra IJ. Serum thyroid hormone levels in patients with liver disease. *Arch Intern Med*. 1979;139(10):1117–2112.
34. Hamilton MA. Prevalence and clinical implications of abnormal thyroid hormone metabolism in advanced heart failure. *Ann Thorac Surg*. 1993;56(1 Suppl):S48–52.
35. Alevizaki M, Syntou M, Xynos K, Pappa T, Vemmos KN. Low triiodothyronine: a strong predictor of outcome in acute stroke patients. *Eur J Clin Invest*. 2007;37(8):651–7.
36. Plikat K, Langgartner J, Buettner R, Bollheimer LC, Woenckhaus U, Schölmerich J, Wrede CE. Frequency and outcome of patients with non-thyroidal illness syndrome in a medical intensive care unit. *Metabolism*. 2007;56(2):239–44.
37. Gangemi EN, Garino F, Berchiolla P, Martinese M, Arecco F, Orlandi F, Stella M. Low triiodothyronine serum levels as a predictor of poor prognosis in burn patients. *Burns*. 2008;34(6):817–24.
38. Scoscia E, Baglioni S, Eslami A, Iervasi G, Monti S, Todisco T. Low triiodothyronine (T3) state: a predictor of outcome in respiratory failure? Results of a clinical pilot study. *Eur J Endocrinol*. 2004;151(5):557–60.
39. Borkowski J, Siemiatkowski A, Wolczyński S, Czaban SL, Jedynek M. Assessment of the release of thyroid hormones in septic shock—prognostic significance. *Pol Merkuri Lekarski*. 2005;18(103):45–8.
40. Schilling JU, Zimmermann T, Albrecht S, Zwipp H, Saeger HD. Low T3 syndrome in multiple trauma patients—a phenomenon or important pathogenetic factor? *Med Klin*. 1999;94(Suppl 3):66–9.
41. Liu J, Wu X, Lu F, Zhao L, Shi L, Xu F. Low T3 syndrome is a strong predictor of poor outcomes in patients with community-acquired pneumonia. *Sci Rep*. 2016;6:22271.
42. Tognini S, Marchini F, Dardano A, Polini A, Ferdeghini M, Castiglioni M, Monzani F. Non-thyroidal illness syndrome and short-term survival in a hospitalised older population. *Age Ageing*. 2010;39:46–50.
43. Yasar ZA, Kirakli C, Yilmaz U, Ucar ZZ, Talay F. Can non-thyroid illness syndrome predict mortality in lung cancer patients? A prospective cohort study. *Horm Cancer*. 2014;5:240–6.
44. Huang J, Jin L, Ji G, Xing L, Xu C, Xiong X, Li H, Wu K, Ren G, Kong L. Implication from thyroid function decreasing during chemotherapy in breast cancer patients: chemosensitization role of triiodothyronine. *BMC Cancer*. 2013;13:334.
45. Del Mar MM, Pellizas C. Thyroid hormone action on innate immunity. *Front Endocrinol*. 2019;10:350.
46. Pang XP, Hershman JM, Chung M, Pekary AE. Characterization of tumor necrosis factor- α receptors in human and rat thyroid cells and regulation of the receptors by thyrotropin. *Endocrinology*. 1989;125(4):1783–8.
47. Pang XP, Hershman JM, Smith V, Pekary AE, Sugawara M. The mechanism of action of tumour necrosis factor- α and interleukin 1 on FRTL-5 rat thyroid cells. *Acta Endocrinol*. 1990;123(2):203–10.
48. Dubuis JM, Dayer JM, Siegrist-Kaiser CA, Burger AG. Human recombinant interleukin-1 β decreases plasma thyroid hormone and thyroid stimulating hormone levels in rats. *Endocrinology*. 1988;123(5):2175–81.
49. Davies PH, Black EG, Sheppard MC, Franklyn JA. Relation between serum interleukin-6 and thyroid hormone concentrations in 270 hospital inpatients with non-thyroidal illness. *Clin Endocrinol*. 1996;44(2):199–205.
50. Chen X, Zhao B, Qu Y, Chen Y, Xiong J, Feng Y, Men D, Huang Q, Liu Y, Yang B, Ding J, Li F. Detectable serum SARS-CoV-2 viral load (RNAemia) is closely correlated with drastically elevated interleukin 6 (IL-6) level in critically ill COVID-19 patients. *Clin Infect Dis*. 2020. <https://doi.org/10.1093/cid/ciaa449>.
51. Gao X, Lee HY, Li W, Platt RJ, Barrasa MI, Ma Q, Elmes RR, Rosenfeld MG, Lodish HF. Thyroid hormone receptor beta and NCOA4 regulate terminal erythrocyte differentiation. *Proc Natl Acad Sci USA*. 2017;114(38):10107–12.
52. Imtiaz F, Shafique K, Mirza S, Ayooz B, Vart P, Rao S. Neutrophil lymphocyte ratio as a measure of systemic inflammation in prevalent chronic diseases in Asian population. *Int Arch Med*. 2012;5(1):2.
53. Zheng M, Gao Y, Wang G, Song G, Liu S, Sun D, Xu Y, Tian Z. Functional exhaustion of antiviral lymphocytes in COVID-19 patients. *Cell Mol Immunol*. 2020;17:533–5.
54. Zheng Y, Huang Z, Ying G, Zhang X, Ye W, Hu Z, Hu C, Wei H, Zeng Y, Chi Y, et al. Study of the lymphocyte change between COVID-19 and non-COVID-19 pneumonia cases suggesting other factors besides uncontrolled inflammation contributed to multi-organ injury. *medRxiv*. 2020. <https://doi.org/10.1101/2020.02.19.20024885>.
55. Qin C, Zhou L, Hu Z, Zhang S, Yang S, Tao Y, Xie C, Ma K, Shang K, Wang W, et al. Dysregulation of immune response in patients with COVID-19 in Wuhan, China. *Clin Infect Dis*. 2020. <https://doi.org/10.1093/cid/ciaa248>.
56. Gadalla R, Noamani B, MacLeod BL, Dickson RJ, Guo M, Xu W, Lukhele S, Elsaesser HJ, Razak ARA, Hirano N, McGaha TL, Wang B, Butler M, Guidos CJ, Ohashi PS, Siu LL, Brooks DG. Validation of CyTOF against flow cytometry for immunological studies and monitoring of human cancer clinical trials. *Front Oncol*. 2019;9:415.
57. Schwarz Y, Percik R, Oberman B, Yaffe D, Zimlichman E, Tirosh A. Sick euthyroid syndrome on presentation of patients With COVID-19: a potential marker for disease severity. *Endocr Pract*. 2021;27(2):101–9.
58. Mattar SAM, Koh SJQ, Rama Chandran SR, Cherg BPZ. Subacute thyroiditis associated with COVID-19. *BMJ Case Rep*. 2020;13:e237336.
59. Dworakowska D, Morley S, Mulholland N, Grossman AB. Covid-19 related thyroiditis: a novel disease entity? *Clin Endocrinol*. 2021. <https://doi.org/10.1111/cen.14453>.

60. Pantos C, Tseti I, Mourouzis I. Use of triiodothyronine to treat critically ill COVID-19 patients: a new clinical trial. *Crit Care*. 2020;24(1):209. <https://doi.org/10.1186/s13054-020-02934-2>.
61. Nooka AK, Kaufman JL, Hofmeister CC, Joseph NS. Daratumumab in multiple myeloma. *Cancer*. 2019;125(14):23642382.
62. Marlein CR, Piddock RE, Mistry JJ, Zaitseva L, Hellmich C, Horton RH, Zhou Z, Auger MJ, Bowles KM, Rushworth SA. CD38-driven mitochondrial trafficking promotes bioenergetic plasticity in multiple myeloma. *Cancer Res*. 2019;79(9):2285–97.
63. Burgler S. Role of CD38 expression in diagnosis and pathogenesis of chronic lymphocytic leukemia and its potential as therapeutic target. *Crit Rev Immunol*. 2015;35(5):417–32.
64. Deaglio S, Mehta K, Malavasi F. Human CD38: a (r)evolutionary story of enzymes and receptors. *Leuk Res*. 2001;25(1):1–12.
65. Yamazaki K, Suzuki K, Yamada E, Yamada T, Takeshita F, Matsumoto M, Mitsuhashi T, Obara T, Takano K, Sato K. Suppression of iodide uptake and thyroid hormone synthesis with stimulation of the Type I interferon system by double-stranded ribonucleic acid in cultured human thyroid follicles. *Endocrinology*. 2007;148(7):3226–35.
66. Reth M. Antigen receptors on B lymphocytes. *Annu Rev Immunol*. 1992;10:97–121.
67. Garcia Vela J, Delgado I, Benito L, Monteserin M, Garcia Alonso L, Somolinos N, Andreu M, Oña F. CD79b expression in B cell chronic lymphocytic leukemia: its implication for minimal residual disease detection. *Leukemia*. 1999;13:1501–5.
68. Lu A, Wu H. Structural mechanisms of inflammasome assembly. *FEBS J*. 2015;282(3):435–44.
69. Kelley N, Jeltema D, Duan Y, He Y. The NLRP3 inflammasome: an overview of mechanisms of activation and regulation. *Int J Mol Sci*. 2019;20:3328.
70. Zahid A, Li B, Kombe AJK, Jin T, Tao J. Pharmacological inhibitors of the NLRP3 inflammasome. *Front Immunol*. 2019;10:2538.
71. Puig-Domingo M, Marazuela M, Giustina A. COVID-19 and endocrine diseases. A statement from the European society of endocrinology. *Endocrine*. 2020;68(1):2–5. <https://doi.org/10.1007/s12020-020-02294-5>.

Publisher's Note

Springer Nature remains neutral with regard to jurisdictional claims in published maps and institutional affiliations.

Ready to submit your research? Choose BMC and benefit from:

- fast, convenient online submission
- thorough peer review by experienced researchers in your field
- rapid publication on acceptance
- support for research data, including large and complex data types
- gold Open Access which fosters wider collaboration and increased citations
- maximum visibility for your research: over 100M website views per year

At BMC, research is always in progress.

Learn more biomedcentral.com/submissions

