

ANALYTICAL AND NUMERICAL INVESTIGATION OF TRAVELING WAVES FOR THE ALLEN–CAHN MODEL WITH RELAXATION

CORRADO LATTANZIO, CORRADO MASCIA, RAMÓN G. PLAZA,
AND CHIARA SIMEONI

ABSTRACT. A modification of the parabolic Allen–Cahn equation, determined by the substitution of Fick’s diffusion law with a relaxation relation of Cattaneo–Maxwell type, is considered. The analysis concentrates on traveling fronts connecting the two stable states of the model, investigating both the aspects of existence and stability. The main contribution is the proof of the nonlinear stability of the wave, as a consequence of detailed spectral and linearized analyses. In addition, numerical studies are performed in order to determine the propagation speed, to compare it to the speed for the parabolic case, and to explore the dynamics of large perturbations of the front.

CONTENTS

1. Introduction	2
2. Propagating fronts	7
2.1. Existence of the traveling wave	7
2.2. Numerics of the propagating speed	13
3. Linearization and spectral stability	16
3.1. Perturbation equations and the spectral problem	17
3.2. Reformulation of the spectral problem	19
3.3. The (translation invariance) eigenvalue $\lambda = 0$	22
3.4. Further properties of the point spectrum	26
3.5. Consistent splitting and essential spectrum	27
3.6. Evans function analysis	31
3.7. Resolvent estimates and proof of Theorem 3.2	34
4. Decaying semigroup and nonlinear stability	37
4.1. Generation of the semigroup	37
4.2. Linear decay rates	39

Key words and phrases. Allen–Cahn equation; Traveling waves; Nonlinear stability.

RGP is grateful to DISIM, University of L’Aquila, and to the MathMods Program (Erasmus Mundus) for their hospitality and financial support in academic visits during the Falls of 2012 and 2013, when this research was carried out.

This work was partially supported by CONACyT (Mexico) and MIUR (Italy), through the MAE Program for Bilateral Research, grant no. 146529 and by the Italian Project FIRB 2012 “Dispersive dynamics: Fourier Analysis and Variational Methods”.

4.3. Nonlinear stability	41
5. Numerical experiments	46
5.1. Riemann problem	50
5.2. Randomly perturbed initial data	51
References	52

1. INTRODUCTION

The main topic of this paper is to investigate the dynamical behavior of a scalar variable u subject to a transport mechanism of hyperbolic type coupled with a reaction process, driving the unknown u toward one among two different competing stable states. Restricting the attention to a one-dimensional environment and denoting by v the flux of u , standard balance of mass provides the relation

$$u_t - v_x = f(u), \quad (1.1)$$

dictating that the quantity u diffuses with flux v and grows/decays according to the choice of the function f . The simplest structure for the reaction term f giving raise to two competing stable states is referred to as a *bistable form*, meaning that f is smooth and such that for some $\alpha \in (0, 1)$,

$$\begin{aligned} f(0) = f(\alpha) = f(1) = 0, & \quad f'(0), f'(1) < 0, \quad f'(\alpha) > 0, \\ f(u) > 0 \text{ in } (-\infty, 0) \cup (\alpha, 1), & \quad f(u) < 0 \text{ in } (0, \alpha) \cup (1, +\infty). \end{aligned} \quad (1.2)$$

Equivalently, the function f can be considered as the derivative of a double-well potential with wells centered at $u = 0$ and $u = 1$. A typical reaction function satisfying (1.2) which is often found in the literature is the cubic polynomial

$$f(u) = \kappa u(1 - u)(u - \alpha), \quad \kappa > 0, \quad \alpha \in (0, 1). \quad (1.3)$$

Reaction functions of bistable type arise in many models of natural phenomena, such as kinetics of biomolecular reactions [40, 38], nerve conduction [32, 35], and electrothermal instability [25], among others.

To complete the model, an additional relation has to be coupled with (1.1). The standard approach is based on the use of Fick's diffusion law, which consists in the equality $v = u_x$, so that one ends up with the semilinear parabolic equation

$$u_t = u_{xx} + f(u). \quad (1.4)$$

Equation (1.4) has appeared in many different contexts and the nomenclature is not uniform. It is known as the bistable reaction-diffusion equation [13], the Nagumo equation in neurophysiological modeling [35, 41], the real Ginzburg–Landau for the variational description of phase transitions [36], and the Chafee–Infante equation [6], among others. In tribute to S. M. Allen and J. W. Cahn, who proposed it in connection with the motion of

boundaries between phases in alloys [3], we call it the (*parabolic*) *Allen–Cahn equation*.

Equation (1.4) undergoes the same criticisms received by the standard linear diffusion equation, mainly concerning the unphysical infinite speed of propagation of disturbances (see discussion in [24]). Thus, following the modification proposed by Cattaneo [5] (see also Maxwell [34]) for the heat equation, it is meaningful to couple (1.1) with an equation stating that the flux v relaxes toward u_x in a time-scale $\tau > 0$, namely

$$\tau v_t + v = u_x,$$

usually named *Maxwell–Cattaneo transfer law* (for a complete discussion on its role and significance in the modeling of heat conduction, see [26, 27]). With this choice, the couple density/flux (u, v) solves the hyperbolic system

$$u_t = v_x + f(u), \quad \tau v_t = u_x - v. \quad (1.5)$$

We are interested in studying the dynamics of solutions to system (1.5), which we refer to as the *Allen–Cahn model with relaxation*. The corresponding Cauchy problem is determined by initial conditions

$$u(x, 0) = u_0(x), \quad v(x, 0) = v_0(x), \quad x \in \mathbb{R}. \quad (1.6)$$

It is to be observed that we can eliminate the variable v by a procedure known in some references as *Kac’s trick* (cf. [23, 21, 28]): differentiate the first equation in (1.5) with respect to t , and the second with respect to x , to obtain the following scalar second-order equation for the variable u ,

$$\tau u_{tt} + (1 - \tau f'(u))u_t = u_{xx} + f(u), \quad (1.7)$$

which we call the *one-field equation* determined by (1.5). The initial conditions corresponding to (1.6) read

$$u(x, 0) = u_0(x), \quad u_t(x, 0) = f(u_0(x)) + v_0'(x), \quad x \in \mathbb{R}.$$

Notice that equation (1.7) formally reduces to (1.4) in the singular limit $\tau \rightarrow 0^+$.

We also observe that if we include a diffusion coefficient $\nu > 0$,

$$u_t = v_x + f(u), \quad \tau v_t = \nu u_x - v,$$

then last system can be reduced to the form of (1.5) under the rescaling $x \mapsto x/\sqrt{\nu}$ and $v \mapsto v/\sqrt{\nu}$. Thus, we can consider the case $\nu = 1$ without loss of generality.

System (1.5) can be interpreted as a hyperbolic reaction-diffusion system. An intriguing issue is to compare the properties of the usual parabolic reaction-diffusion equation (1.4) with the ones of its hyperbolic counterpart (1.5). This paper pertains to one of the main hallmarks of the Allen–Cahn equation: the presence of stable heterogeneous structures, describing the interaction between the two stable states. Specifically, we examine traveling wave solutions to (1.5), i.e. special solutions of the form

$$(u, v)(x, t) = (U, V)(\xi), \quad \xi = x - ct, \quad c \in \mathbb{R}, \quad (1.8)$$

with asymptotic conditions

$$(U, V)(\pm\infty) = (U_{\pm}, 0), \quad \text{where } U_- := 0, \quad U_+ := 1, \quad (1.9)$$

with the aim of investigating their existence and stability from both an analytical and numerical point of view.

Existence of traveling waves for systems of the form (1.5) with monostable/logistic reaction terms has been widely investigated [18, 19, 17]. The situation for the bistable case is less explored, even if it is more or less known that, under reasonable assumptions, there exist traveling fronts with a uniquely determined propagation speed. For the sake of completeness, in §2 we give a self-contained proof of the following existence result, which provides also some properties crucial to the stability analysis.

Theorem 1.1. *Let f be such that (1.2) holds and let τ satisfy*

$$0 < \tau < \tau_m := 1 / \sup_{u \in [0,1]} |f'(u)|. \quad (1.10)$$

Then, there exists a unique value $c_ \in (-1/\sqrt{\tau}, 1/\sqrt{\tau})$ for which system (1.5) possesses a traveling wave connecting the state $(0, 0)$ to $(1, 0)$. Moreover,*

- (a) the function U is monotone increasing;*
- (b) both components U and V are positive and converge to their asymptotic states exponentially fast; and,*
- (c) the speed c_* depends continuously with respect to $\tau \in (0, \tau_m)$ and converges to the speed of the (parabolic) Allen–Cahn equation as $\tau \rightarrow 0^+$.*

The smallness assumption (1.10) on the relaxation parameter τ is not sharp and arises as a consequence of the specific choices of the natural variables u and v , which generates some obstruction in the course of the proof. A different choice of unknowns could provide a more general result allowing a weaker requirement on τ , and, specifically, $\tau < 1/\sup_u f'(u)$.

We observe, however, that condition (1.10) is tantamount to the positivity of the damping coefficient in equation (1.7), a condition which is usually imposed in order to ensure that the solution is positive (hyperbolic equations may have negative solutions even with positive initial conditions; cf. [20]). The latter is an important feature for a density solution, for example. Furthermore, although condition (1.10) may seem as a pure mathematical assumption, it relates the relaxation time τ with the typical time scale $\tau_{\text{reac}} = \inf |u/f(u)| \sim 1/\sup |f'(u)|$ associated to the reaction.

Passing to the stability issue, as for evolution problems on the whole real line defined by autonomous partial differential equations, invariance with respect to translations determines that any traveling wave belongs to a manifold of solutions of the same type with dimension at least equal to one. Thus, small perturbations of a given front are not expected to decay to the front itself, but to the manifold generated by the traveling wave and, at best, to a specific element of such set. Such property, called *orbital stability*, holds for the present case. More precisely, we establish the following

Theorem 1.2. *Let $f \in C^3$ be such that (1.2) holds and $\tau \in [0, \tau_m)$. Let (U, V) be a traveling wave of (1.5) satisfying (1.9) with speed c_* . Then, there exists $\varepsilon > 0$ such that, for any initial data satisfying $(u_0, v_0) - (U, V) \in H^1(\mathbb{R}; \mathbb{R}^2)$ with $|(u_0, v_0) - (U, V)|_{H^1} < \varepsilon$, the solution (u, v) to the Cauchy problem (1.5)–(1.6) satisfies for any $t > 0$*

$$|(u, v)(\cdot, t) - (U, V)(\cdot - c_*t + \delta)|_{H^1} \leq C|(u_0, v_0) - (U, V)|_{H^1} e^{-\theta t}$$

for some shift $\delta \in \mathbb{R}$ and constants $C, \theta > 0$.

This statement is the final outcome of some intermediate fundamental steps which are not detailed at this stage for the sake of simplicity of presentation. Actually, Theorem 1.2 is proved by following a well-established approach based on linearization, spectral analysis, linear and nonlinear stability. All of these steps are developed in a complete way, altogether providing a sound rigorous basis to the stability of propagation fronts for the Allen–Cahn model with relaxation. At this point, we find it suitable to mention recent work by Rottmann-Matthes [48, 49], who proves that spectral stability implies orbital stability of traveling waves for a large class of hyperbolic systems (which includes the Allen–Cahn model with relaxation (1.5)), and provides numerical evidence of spectral stability with spectral gap for the particular case of system (1.5). These numerical observations, however, do not constitute a proof of stability. Our contribution is a self-contained study of the dynamics of traveling fronts for the particular model (1.5) (which warrants note because of its importance in the theory of hyperbolic diffusion), as well as a complete analysis of their stability.

Both the existence and the stability analyses are complemented with a numerical study confirming the theoretical results and providing additional relevant information on what should be expected beyond the boundaries of the proved statements. In the first part, we numerically determine the values of the propagation speeds and discuss their relation with the corresponding value in the case of the standard Allen–Cahn equation. Interestingly enough, the model with relaxation exhibits in some regimes fronts that are faster with respect to their corresponding parabolic ones. At the end of the paper, we consider some numerical simulations relative to perturbations of the traveling front, restricting the attention to the case of standard and perturbed Riemann problems. The outcome is a strong numerical evidence that the domain of attractivity of the wave is wider than what described by the stability result of Theorem 1.2 (see Figure 1, detailed description in Section 5). The algorithm used in this part is based on a reformulation of (1.5), discretized by using a standard finite-difference method with upwinding of the space derivatives.

Plan of the paper. This work is divided into four more sections. Section 2 deals with the existence of the propagation fronts together with the establishment of their main properties, which are essential for completing the stability arguments. It contains the detailed proof of Theorem 1.1, and it

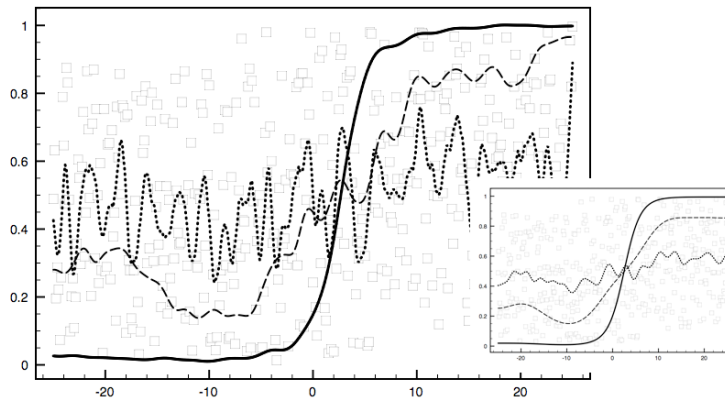


FIGURE 1. Random initial datum in $(-\ell, \ell)$, $\ell = 25$ (squares). Solution profiles for the Allen–Cahn equation with relaxation at time $t = 0.5$ (dot), $t = 7.5$ (dash), $t = 15$ (continuous). For comparison, in the small window, the solution to the parabolic Allen–Cahn equation. For details, see Section 5.

is based on a phase-plane analysis that takes advantage of a specific monotonicity property of the system under consideration. The content of Section 3 is the spectral analysis of the linearized operator around the front. The main result is Theorem 3.2, establishing the spectral stability of the wave. The proof is based on a perturbation argument at $\tau = 0$, combined with a continuation procedure to show that the same spectral structure holds all along the interval $(0, \tau_m)$. The first part of Section 4 deals with the linear stability property. This is consequence of spectral stability because of the hyperbolic nature of system (1.5) together with an additional resolvent estimate controlling the behavior at large frequencies. With such tools at hand, it is possible to prove the nonlinear stability theorem, taking advantage of the presence of a spectral gap separating the zero eigenvalue from the rest of the spectrum. That is the content of the final part of the Section. Finally, Section 5 is entirely devoted to the numerical approximation of (1.5). The principal part of the system is diagonalized and a finite-difference upwind approximation is considered. First, we analyze the Riemann problem connecting the two asymptotic states of the front. Such choice is used to compare the asymptotic speed of propagation with the values determined in Section 2 and to show the numerical evidence of convergence to the front. Then, as large perturbations of the front, we consider initial data which are randomly chosen with some bias on the values at the left and at the right, mimicking an initial configuration which vaguely resembles the transition from $u = 0$ to $u = 1$. The large-time convergence to the propagation front

is evident from the numerical output.

Notations. We use lowercase boldface roman font to indicate column vectors (e.g., \mathbf{w}), and with the exception of the identity matrix I we use upper case boldface roman font to indicate square matrices (e.g., \mathbf{A}). Elements of a matrix \mathbf{A} (or vector \mathbf{w}) are denoted A_{ij} (or w_j , respectively). Linear operators acting on infinite-dimensional spaces are indicated with calligraphic letters (e.g., \mathcal{L} and \mathcal{T}). For a complex number λ , we denote complex conjugation by $\bar{\lambda}$ and denote its real and imaginary parts by $\operatorname{Re} \lambda$ and $\operatorname{Im} \lambda$, respectively. Complex transposition of vectors or matrices are indicated by the symbol $*$ (e.g., \mathbf{w}^* and \mathbf{A}^*), whereas simple transposition is denoted by the symbol \mathbf{A}^\top . For a linear operator \mathcal{L} , its formal adjoint is denoted by \mathcal{L}^* . Given $m \in \mathbb{N}$, the space $H^m(\mathbb{R}; \mathbb{C}^n)$ is composed of vector functions from \mathbb{R} to \mathbb{C}^n , where each component belongs to the Sobolev space $H^m(\mathbb{R}; \mathbb{C})$. It is endowed with the standard scalar product. Finally, we denote derivatives with respect to the indicated argument by $'$ (e.g., $f'(u)$, $a'(x)$). Partial or total derivatives with respect to spatial and time variables (e.g. x and t) are indicated by lower subscript. For the sake of simplicity, we sometimes use the symbol ∂ to indicate the latter when appropriate.

2. PROPAGATING FRONTS

Parabolic Allen–Cahn equation (1.4) supports traveling waves connecting the stable states $u = 0$ and $u = 1$. Also, the propagating speed and, up to translations, the wave profile, are unique. For special forms of the reaction function f , existence of the wave can be proved by determining explicit formulae for speed and profile. For a general bistable f , the proof is based on a phase-plane analysis for the corresponding nonlinear ordinary differential system. Uniqueness arises as consequence of the fact that the heteroclinic orbit linking the asymptotic states is a saddle/saddle connection.

For system (1.5), it is not anymore possible to find explicit traveling wave solutions even for f of polynomial type. Phase-plane analysis, instead, is a more flexible approach and it can be applied also in the case of the Allen–Cahn equation with relaxation, as it is shown in the sequel. In Subsection 2.2, we also tackle the problem of the numerical evaluation of the propagation speed in the case of a third-order polynomial function f , analyzing the relation between the velocities of the hyperbolic and the parabolic Allen–Cahn equations for different choices of the parameters α and τ .

2.1. Existence of the traveling wave. Traveling waves of (1.5) are special solutions of the form $(u, v)(x, t) = (U, V)(\xi)$ where $\xi = x - ct$ and c is a real parameter. The couple (U, V) is referred to as the *profile of the wave* and the value c as its *propagation speed*. Here, we are concerned with traveling waves satisfying the asymptotic conditions (1.9), so that the corresponding solution describes how the relaxation system resolves the transition from one stable state to the other. In this respect, the value of the speed c is very

significant, since it describes how fast and in which direction the switch from value $u = 0$ to value $u = 1$ is performed.

Existence of a traveling wave for (1.5) satisfying (1.9) can be deduced by the fact that the ordinary differential equation for the profile, obtained by inserting the *ansatz* $u(x, t) = U(x - ct)$ in the one-field equation (1.7), is convertible into the corresponding equation arising in the case of reaction-diffusion models with density-dependent diffusion. Then, one applies a general result proven by Engler [11], that relates the existence of traveling wave solutions of reaction-diffusion equations with constant diffusion coefficients to the ones of the density-dependent diffusion coefficient case. Considering such path too tangled, we prefer to give an explicit proof of the existence by dealing directly with the system in the original form (1.5).

Substituting the form of the traveling wave solutions, we obtain the system of ordinary differential equations

$$cU_\xi + V_\xi + f(U) = 0, \quad U_\xi + c\tau V_\xi - V = 0, \quad (2.1)$$

to be complemented with the asymptotic boundary conditions (1.9). The value c in (2.1) is an unknown and its determination is part of the problem.

Proposition 2.1. *Assume hypothesis (1.2) and let $\tau \in [0, \tau_m)$. If (U, V) is a solution to (2.1) satisfying the asymptotic conditions (1.9), then*

- (i) *the velocity c has the same sign of $-\int_0^1 f(u) du$;*
- (ii) *there holds*

$$c^2\tau < 1. \quad (2.2)$$

Proof. (i) Multiplying the first equation in (2.1) by U_ξ and using the second, we obtain

$$\begin{aligned} 0 &= c|U_\xi|^2 + V_\xi U_\xi + f(U)U_\xi \\ &= c|U_\xi|^2 + (U_\xi + c\tau V_\xi)_\xi U_\xi + f(U)U_\xi \\ &= c|U_\xi|^2 + U_\xi U_{\xi\xi} - c\tau(cU_\xi + f(U))_\xi U_\xi + f(U)U_\xi \\ &= c(1 - \tau f'(U))|U_\xi|^2 + (1 - c^2\tau)U_\xi U_{\xi\xi} + f(U)U_\xi. \end{aligned}$$

Thus, denoting by F a primitive of f , there holds

$$\left(\frac{1}{2}(1 - c^2\tau)|U_\xi|^2 + F(U)\right)_\xi + c(1 - \tau f'(U))|U_\xi|^2 = 0. \quad (2.3)$$

Integrating in \mathbb{R} , we infer the relation

$$c \int_{\mathbb{R}} (1 - \tau f'(U)) |U_\xi|^2 d\xi = F(0) - F(1) = - \int_0^1 f(u) du.$$

Since $\tau < \tau_m$, then $\tau f'(u) < 1$ for any u and part (i) follows.

(ii) The case $c = 0$ is obvious. Let us assume $c < 0$ (the opposite case being similar). Integrating the equality (2.3) in $(-\infty, \xi)$, we get

$$\frac{1}{2}(1 - c^2\tau)|U_\xi|^2 = F(0) - F(U(\xi)) - c \int_{-\infty}^{\xi} (1 - \tau f'(U)) |U_\xi|^2 d\xi.$$

Choosing ξ such that $U(\xi) \in (0, \alpha)$, since F is strictly decreasing in $(0, \alpha)$, the right-hand side is strictly positive and thus (2.2) holds. \square

Condition (2.2) should be regarded as a *subcharacteristic condition*. Indeed, it has a similar interpretation as the corresponding relation for hyperbolic systems with relaxation: the equilibrium wave velocity cannot exceed the characteristic speed of the perturbed wave equation (1.7).

Thanks to (2.2), we are allowed to introduce the independent variable $\eta = (1 - c^2\tau)^{-1}\xi$, so that system (2.1) becomes

$$U_\eta = \phi(U, V) := c\tau f(U) + V, \quad V_\eta = \psi(U, V) := -f(U) - cV. \quad (2.4)$$

Departing from a detailed description of the unstable and stable manifold of the singular points $(0, 0)$ and $(1, 0)$, respectively, it is possible to show the existence of a saddle/saddle connection between the asymptotic states required by (1.9). The existence result is based on the analysis of the limiting regimes $c \rightarrow \pm 1/\sqrt{\tau}$ of the system (2.4) and on their (monotone) variations for the values in between, using the notion of a *rotated vector field* (cf. [45]).

Theorem 1.1. 1. The linearization of (2.4) at $(\bar{U}, 0)$ with $f(\bar{U}) = 0$ is described by the jacobian matrix calculated at $(\bar{U}, 0)$

$$\frac{\partial(\phi, \psi)}{\partial(u, v)} = \begin{pmatrix} c\tau f'(\bar{U}) & 1 \\ -f'(\bar{U}) & -c \end{pmatrix}$$

whose determinant is $(1 - c^2\tau)f'(\bar{U})$. In particular, if $f'(\bar{U}) < 0$, the singular point $(\bar{U}, 0)$ is a saddle. The eigenvalues are the roots of the polynomial

$$p(\mu) = \mu^2 + c(1 - \tau f'(\bar{U}))\mu + (1 - c^2\tau)f'(\bar{U})$$

and they are given by

$$\mu_\pm(\bar{U}) = -\frac{1}{2}c(1 - \tau f'(\bar{U})) \pm \frac{1}{2}\sqrt{c^2(1 - \tau f'(\bar{U}))^2 - 4f'(\bar{U})}$$

with corresponding eigenvectors $\mathbf{r}_\pm(\bar{U}) = (1, \mu_\pm(\bar{U}) - c\tau f'(\bar{U}))^\top$.

For later use, let us note that, as a consequence of (1.10),

$$\mu_+(0) - c\tau f'(0) > -\sqrt{\tau} f'(0) \quad \text{and} \quad \mu_-(1) - c\tau f'(1) < \sqrt{\tau} f'(1), \quad (2.5)$$

for $c \in (-1/\sqrt{\tau}, 1/\sqrt{\tau})$. Indeed, for $f'(\bar{U}) < 0$, there holds

$$p((c\tau \pm \sqrt{\tau})f'(\bar{U})) = \sqrt{\tau} \left(\frac{1}{\sqrt{\tau}} \pm c \right) (1 - \tau f'(\bar{U}))f'(\bar{U}) < 0,$$

so that the values $(c\tau \pm \sqrt{\tau})f'(\bar{U})$ belong to the interval $(\mu_-(\bar{U}), \mu_+(\bar{U}))$.

2. Given $c \in (-1/\sqrt{\tau}, 1/\sqrt{\tau})$, let us denote by $\mathbb{U}_0(c)$ the unstable manifold of the singular point $(0, 0)$ and by $\mathbb{S}_1(c)$ the stable manifold of $(1, 0)$. Also, let $\mathbb{U}_0^+(c)$ be the intersection of $\mathbb{U}_0(c)$ with the strip $[0, \alpha] \times \mathbb{R}$ and let $\mathbb{S}_1^-(c)$ the intersection of $\mathbb{S}_1(c)$ with the strip $[\alpha, 1] \times \mathbb{R}$. Such sets are graphs of appropriate solutions to the first order equation

$$\frac{dV}{dU} = -\frac{f(U) + cV}{c\tau f(U) + V}. \quad (2.6)$$

Thanks to (2.5), $\mathbb{U}_0^+(c)$ lies above the graph of the function $v = -\sqrt{\tau}f(u)$ in a neighborhood of $(0, 0)$. In addition, for $u \in (0, \alpha)$, there holds

$$(\phi, \psi) \cdot (\sqrt{\tau}f'(u), 1)|_{v=-\sqrt{\tau}f(u)} = -(1 - c\sqrt{\tau})(1 - \tau f'(u))f(u) > 0$$

showing that no trajectories may trespass the graph of the function $v = -\sqrt{\tau}f(u)$ for $u \in (0, \alpha)$. In particular, the set $\mathbb{U}_0^+(c)$ lies above the graph $v = -\sqrt{\tau}f(u)$ and hits the line $u = \alpha$ for a given value $v_0(c) \in (0, +\infty)$. Similar considerations show that $\mathbb{S}_1^-(c)$ stays above the graph $v = \sqrt{\tau}f(u)$ and touches the straight line $u = \alpha$ for a given value $v_1(c) \in (0, +\infty)$.

3. To determine how the unstable/stable manifolds change with the parameter c , let us observe that

$$\begin{aligned} (\phi, \psi, 0)^\top \wedge (\partial_c \phi, \partial_c \psi, 0)^\top &= \det \begin{pmatrix} \mathbf{i} & \mathbf{j} & \mathbf{k} \\ c\tau f(U) + V & -f(U) - cV & 0 \\ \tau f(U) & -V & 0 \end{pmatrix} \\ &= (\tau f(U)^2 - V^2)\mathbf{k}. \end{aligned}$$

Thus, the vector field (ϕ, ψ) defining (2.4) rotates clockwise in the region $\{(u, v) : v \geq \sqrt{\tau}|f(u)|\}$ as the parameter c increases. As a consequence, the curves describing $\mathbb{U}_0^+(c)$ and $\mathbb{S}_1^-(c)$ rotate clockwise when c increases and the functions $c \mapsto v_0(c)$ and $c \mapsto v_1(c)$ are, respectively, strictly monotone decreasing and strictly monotone increasing.

4. To conclude the existence of the orbit, we analyze the behavior of (2.4) in the limiting regimes $c \rightarrow \pm 1/\sqrt{\tau}$. For $c = -1/\sqrt{\tau}$, the system reduces to

$$U_\eta = V - \sqrt{\tau}f(U), \quad V_\eta = \frac{1}{\sqrt{\tau}}(V - \sqrt{\tau}f(U)).$$

In particular, all the trajectories lie along straight lines of the form

$$v = \frac{u}{\sqrt{\tau}} + C, \quad C \in \mathbb{R},$$

and converge, as $t \rightarrow -\infty$, to the unique intersection between the invariant straight line and the graph of the function $\sqrt{\tau}f$ (see Fig. 2, depicting the (U, V) plane for the particular case of the cubic reaction function f). The unstable manifold $\mathbb{U}_0(c)$ of the singular point $(0, 0)$ is the straight line $v = u/\sqrt{\tau}$, while the center-stable manifold $\mathbb{S}_1(c)$ of $(1, 0)$ is the graph of the function $\sqrt{\tau}f$. In particular, there holds

$$\mathbb{U}_0(-1/\sqrt{\tau})|_{U=\alpha} = \alpha(1, 1/\sqrt{\tau}), \quad \mathbb{S}_1(-1/\sqrt{\tau})|_{U=\alpha} = \alpha(1, 0),$$

that gives

$$v_0(-1/\sqrt{\tau}) = \alpha/\sqrt{\tau}, \quad v_1(-1/\sqrt{\tau}) = 0.$$

The situation for $c = 1/\sqrt{\tau}$ is similar, yielding

$$v_0(1/\sqrt{\tau}) = 0, \quad v_1(1/\sqrt{\tau}) = (1 - \alpha)/\sqrt{\tau}.$$

The conclusion is at hand, since

$$(v_1 - v_0)(-1/\sqrt{\tau}) = -\alpha/\sqrt{\tau} < 0 < (1 - \alpha)/\sqrt{\tau} = (v_1 - v_0)(1/\sqrt{\tau}),$$

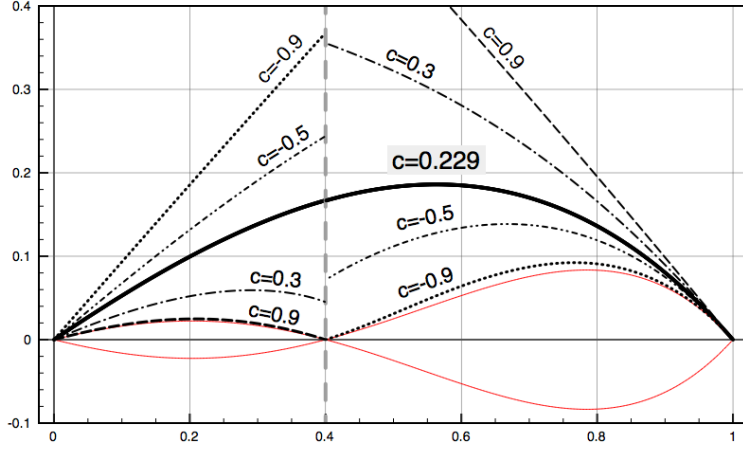


FIGURE 2. Plane (U, V) in the case $f(u) = u(1 - u)(u - \alpha)(0.5 + u)$, $\alpha = 0.4$, $\tau = 1$. The manifolds \mathbb{U}_0^+ and \mathbb{S}_1^- are represented for different choices of $c \in (-1, 1)$. Note the monotonicity with respect to the parameter c . For the choice $c = 0.229$ the two curves intersect at $u = \alpha = 0.4$. The thin (red; online version) lines on the bottom are the graphs of the functions $\pm\sqrt{\tau} f$.

implying, together with the monotonicity of v_0 and v_1 , that there exists a unique value c_* such that $v_1(c_*) = v_0(c_*)$, and then system (2.4) possesses a heteroclinic orbit.

5. To verify the monotonicity of the component U , we note that from system (2.4) one has $U_\eta = c\tau f(U) + V$. Let us suppose that $c > 0$. Assume, by contradiction, that $U_\eta(\eta_*) = 0$ for some $\eta_* \in \mathbb{R}$. Therefore $V_* = -c\tau f(U_*)$, where $V_* = V(\eta_*)$, $U_* = U(\eta_*)$. Since V is positive for all $\eta \in \mathbb{R}$, this implies that $f(U_*) < 0$ and, necessarily, that $U_* \in (0, \alpha)$. The subcharacteristic condition (2.2), however, yields

$$0 < -c\tau f(U_*) < -\sqrt{\tau} f(U_*),$$

which is a contradiction with the fact that the trajectory (U, V) lies above the graph of the function $v = -\sqrt{\tau} f(u)$ for $u \in (0, \alpha)$. The case $c < 0$ is analogous and a similar argument for $U_* \in (\alpha, 1)$ applies. Therefore, U_η never changes sign along the trajectory. Since U connects $U(-\infty) = 0$ with $U(+\infty) = 1$, the function is strictly increasing and $U_\eta > 0$ for all $\eta \in \mathbb{R}$. The subcharacteristic condition guarantees that the same statement holds for the original profile in the ξ variable, that is, $U_\xi > 0$.

6. Exponential decay of the profile is a consequence of the hyperbolicity of the non-degenerate end-points $(0, 0)$ and $(1, 0)$. Indeed, rewriting system (2.1) (in the original moving variable ξ) as

$$U_\xi = (1 - c^2\tau)^{-1}(c\tau f(U) + V), \quad V_\xi = -(1 - c^2\tau)^{-1}(\tau f(U) + cV),$$

and linearizing the right hand side around $(\bar{U}, 0)$, one readily notes that its eigenvalues are the same as the eigenvalues of the linearization of (2.4) at the same point multiplied by a factor $(1 - c^2\tau)^{-1}$. The positive (unstable) eigenvalue at $(0, 0)$ is

$$\mu_u = \frac{1}{2}(1 - c^2\tau)^{-1} \left(-c(1 - \tau f'(0)) + \sqrt{c^2(1 - \tau f'(0))^2 - 4f'(0)} \right) > 0,$$

and the orbit decays to $(0, 0)$ as $\xi \rightarrow -\infty$ with exponential rate

$$|(U, V)(\xi)| \leq C \exp(\mu_u \xi).$$

Likewise, the negative (stable) eigenvalue at $(1, 0)$ is

$$\mu_s = \frac{1}{2}(1 - c^2\tau)^{-1} \left(-c(1 - \tau f'(1)) - \sqrt{c^2(1 - \tau f'(1))^2 - 4f'(1)} \right) < 0,$$

and the orbit decays to $(1, 0)$ as $\xi \rightarrow +\infty$ with rate

$$|(U, V)(\xi)| \leq C \exp(-|\mu_s|\xi).$$

Setting $\nu = \nu(\tau) := \min\{\mu_u, |\mu_s|\} > 0$, we find that

$$\left| \frac{d^j}{d\xi^j} (U - U_{\pm}, V)(\xi) \right| \leq C \exp(-\nu|\xi|), \quad \xi \in \mathbb{R},$$

for some constant $C > 0$ and with $j = 0, 1, 2$.

7. Finally, we have to show continuity of the speed c_* with respect to τ , as stated in (c). To this aim, denoting explicitly the dependence on τ , let us consider the function

$$\delta v(c, \tau) := v_0(c, \tau) - v_1(c, \tau)$$

with v_0 and v_1 defined at Step 2. For any τ , the value c_* is determined implicitly by the equality $\delta v(c, \tau) = 0$. Also, smooth dependence with respect to parameters c and τ of the system (2.4) implies that the function δv is continuous with respect to its variables. Moreover, since v_0 is monotone decreasing and v_1 monotone increasing as functions of c (see the end of Step 3.), the function δv is monotone decreasing with respect to c .

Fix $\tau_0 \in (0, \tau_m)$ and $\eta > 0$. Then, there holds

$$\delta v(c_*(\tau_0) + \eta, \tau_0) < \delta v(c_*(\tau_0), \tau_0) = 0 < \delta v(c_*(\tau_0) - \eta, \tau_0)$$

Since δv is continuous, for any τ in a neighborhood of τ_0 , there holds

$$\delta v(c_*(\tau_0) + \eta, \tau) < 0 < \delta v(c_*(\tau_0) - \eta, \tau),$$

which gives, for $\delta v(\tau, c_*(\tau)) = 0$ and the monotonicity of δv ,

$$c_*(\tau_0) - \eta < c_*(\tau) < c_*(\tau_0) + \eta.$$

The property relative to the limiting behavior as $\tau \rightarrow 0$ can be proved in the same way, observing that the dependence of the differential system with respect to τ is smooth and that the heteroclinic orbit relative to the classical Allen–Cahn case can be obtained by the same procedure. \square

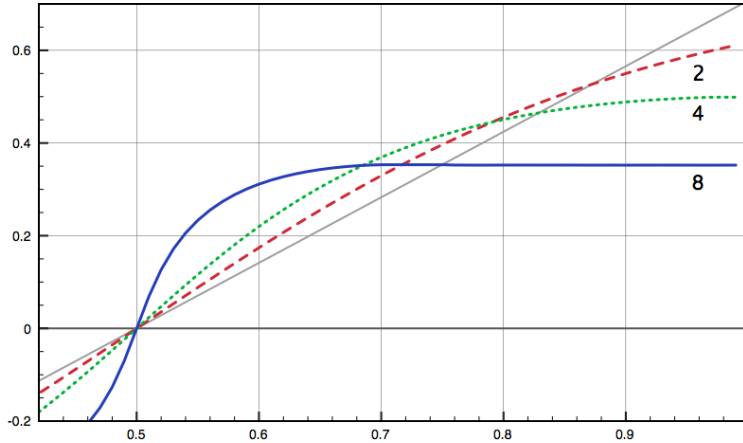


FIGURE 3. Graph of the map $\alpha \mapsto c_*^\tau$ for $\tau = 2$ (dashed line), $\tau = 4$ (dotted line), $\tau = 8$ (continuous line). The thin straight line corresponds to c_*^0 (parabolic Allen–Cahn equation).

2.2. Numerics of the propagating speed. In the case of the Allen–Cahn equation (1.4) with f given by (1.3), it is possible to determine an explicit form for the speed of the propagation front, namely

$$c_*^0 := \sqrt{\frac{2}{\kappa}} \left(\alpha - \frac{1}{2} \right), \quad (2.7)$$

and for the corresponding profile, which is given by a hyperbolic tangent. For the Allen–Cahn system with relaxation, however, finding analogous explicit formulas is awkward if not impossible. Some attempts to derive approximated expressions applying a series expansion method have been performed in [1, 12, 52] with very restricted success.

Here, fixed the reaction strength $\kappa = 1$, we address the problem of computing numerically the value of c_*^τ , the speed of propagation corresponding to the relaxation parameter $\tau > 0$, and we discuss its dependency with respect to the parameters α, τ and its relation with the limiting value c_*^0 .

To determine reliable approximations of the value c_*^τ , we first evaluate numerically the functions $v_0 = v_0(c)$ and $v_1 = v_1(c)$, defined in the proof of Theorem 1.1. In view of that, we compute the solutions $V_0 = V_0(U)$ and $V_1 = V_1(U)$ to (2.6) with initial conditions

$$V_0(\delta) = \delta(\mu_+(0) - c\tau f'(0)), \quad V_1(1 - \delta) = -\delta(\mu_-(1) - c\tau f'(1)),$$

for $\delta > 0$ small (in the following computations, we actually choose $\delta = 10^{-8}$) and we set

$$v_0(c) := V_0(\alpha), \quad v_1(c) := V_1(\alpha).$$

TABLE 1. Numerically computed speeds $c_*^\tau = c_*^\tau(\alpha)$ for different values of α and τ . The column $\tau = 0$ gives the values of the speed for the parabolic Allen–Cahn equation. The presence of parenthesis indicates that condition (1.10) is not satisfied.

α	$\tau = 0$	1	2	3	4	5	6	7	8
0.6	0.14	0.16	0.17	(0.20)	(0.22)	(0.25)	(0.27)	(0.30)	(0.31)
0.7	0.28	0.31	0.33	0.35	(0.37)	(0.38)	(0.38)	(0.37)	(0.35)
0.8	0.42	0.44	0.46	0.46	0.45	(0.43)	(0.41)	(0.38)	(0.35)
0.9	0.57	0.56	0.55	0.52	0.49	0.45	0.41	0.38	0.35

As explained in the proof of Theorem 1.1, the function $c \mapsto v_0(c) - v_1(c)$ is monotone decreasing and it has a single zero, so that, by following a standard bisection procedure, we find an approximated value for the unique zero c_*^τ of the difference $v_0 - v_1$. Some of the numerically computed speeds for different values of α and τ can be found in Table 1.

Applying a variational approach, explicit estimates from below and from above for the value of the speed c_*^τ have been determined by Méndez *et al.* [37]. As already noted by these authors, the estimate from below

$$c_*^\tau(\alpha) \geq c_{\text{low}}^\tau(\alpha) := \frac{\sqrt{2}(\alpha - 1/2)}{\sqrt{(1 - \frac{1}{5}(1 - 2\alpha + 2\alpha^2)\tau)^2 + \frac{1}{2}\tau(1 - 2\alpha)^2}} \quad (2.8)$$

manifests an excellent agreement with the numerically computed values of the speed.

The value c_*^τ depends on both τ and α . For fixed τ , as a function of α alone, c_*^τ is oddly symmetric with respect to $\alpha = 1/2$. Moreover, numerical simulations show that c_*^τ is monotone increasing and *S*-shaped (see Fig. 3).

In some regimes of the parameter α (depending on the size of τ), the speed for the hyperbolic model is larger than the one for the parabolic Allen–Cahn equation. Such behavior is different with respect to the *damped Allen–Cahn equation*, obtained by solely adding the inertial term τu_{tt} to equation (1.4)

$$\tau u_{tt} + u_t = u_{xx} + f(u),$$

(see [14] and the references therein). Indeed, for such equation, the traveling wave equation can be directly reduced to the one of the parabolic case by a simple rescaling of the independent variable. Such procedure furnishes an explicit relation between the speed of propagation of the fronts with and without the inertial term, that is

$$c_{\text{damped}}^\tau = \frac{c_*^0}{\sqrt{1 + \tau(c_*^0)^2}}.$$

From this relation, it is evident that such hyperbolic front is always slower with respect to the corresponding parabolic one.

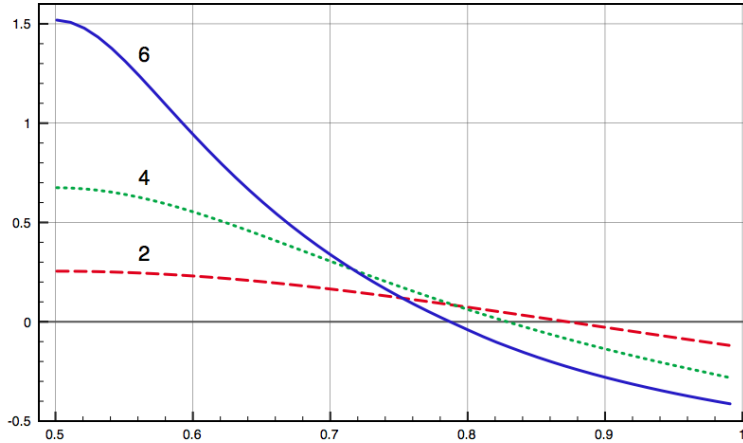


FIGURE 4. Graph of the map $\alpha \mapsto (c_*^\tau - c_*^0)/|c_*^0|$ for $\alpha \in (0.5, 1)$ measuring the relative variation of the speed passing from the parabolic Allen–Cahn equation to its hyperbolic counterpart: $\tau = 2$ (dashed), $\tau = 4$ (dotted), $\tau = 6$ (continuous).

Coming back to the case of the Allen–Cahn equation with relaxation, the discrepancy between c_*^τ and c_*^0 is described by the function of the relative variation $\alpha \mapsto (c_*^\tau - c_*^0)/|c_*^0|$, whose behavior is depicted in Fig. 4 for different values of τ . For large values of τ , the relative increase of the front can be particularly relevant (as an example, about 150% for $\tau = 6$ and values of α close to 0.5). The limiting value of the relative variation as $\alpha \rightarrow 1/2$ can be approximated by using the estimate (2.8), that gives

$$\lim_{\alpha \rightarrow 1/2^+} \frac{c_*^\tau - c_*^0}{|c_*^0|} \approx \lim_{\alpha \rightarrow 1/2^+} \frac{c_{\text{low}}^\tau - c_*^0}{|c_*^0|} = \frac{\tau}{10 - \tau}$$

in good agreement with the numerical values expressed in Fig. 4. It is worth noting the presence of a singularity for $\tau \rightarrow 10^-$ that is outside the range of smallness on the parameter τ that we are considering. We do consider the behavior for large relaxation times τ a very interesting issue to be analyzed in detail in the future.

Complementary information is provided by the analysis of the value of c_*^τ as a function of τ for fixed α (see Fig. 5). The numerical evidence shows that the speed function has different monotonicity properties depending on the chosen value α , passing through the monotone increasing case ($\alpha = 0.6$), increasing-decreasing ($\alpha = 0.7$ and 0.8), monotone decreasing ($\alpha = 0.9$).

It is also worthwhile to observe the relation between the propagation speed c_*^τ and the characteristic speed $1/\sqrt{\tau}$. As stated in Proposition 2.1, $|c_*^\tau|$ is always strictly smaller than $1/\sqrt{\tau}$, as it is observed in Fig. 5, where the graph of the characteristic speed is depicted by a thick gray, in the

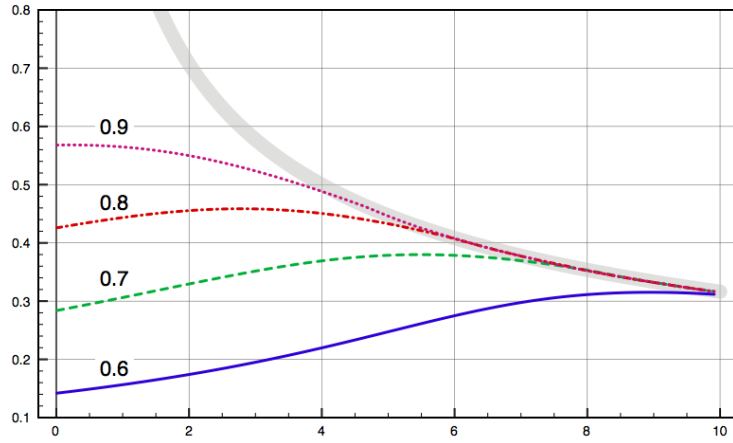


FIGURE 5. Graph of the map $\tau \mapsto c_*^\tau(\alpha)$ for different values of α : continuous line $\alpha = 0.6$, dashed line $\alpha = 0.7$, dash-dotted line $\alpha = 0.8$, dotted line $\alpha = 0.9$. The thick (gray; online version) band corresponds to the graph of the characteristic speed $\tau \mapsto 1/\sqrt{\tau}$; as τ increases, the speed $c_*^\tau(\alpha)$ tends to $1/\sqrt{\tau}$ from below as a consequence of the emergent rôle of the principal part of the system (1.5).

online version) band, lying above the speed curves for all of the values α . For large values of τ , the hyperbolic structure of the principal part of (1.5) becomes crucial and the propagation speed of the front tends to one of the characteristic values $\pm 1/\sqrt{\tau}$ (except for the case of zero speed).

3. LINEARIZATION AND SPECTRAL STABILITY

This section is devoted to establishing both the equations for the perturbation of the traveling wave and the corresponding spectral stability problem. For stability purposes, it is often convenient to recast the system of equations (1.5) in a moving coordinate frame. For fixed $\tau \in [0, \tau_m)$, let $c := c_*(\tau)$ be the unique wave speed of Theorem 1.1. Rescaling the spatial variables as $x \mapsto x - ct$, we obtain the nonlinear system

$$\begin{aligned} u_t &= cu_x + v_x + f(u), \\ \tau v_t &= u_x + c\tau v_x - v. \end{aligned} \tag{3.1}$$

From this point on and for the rest of the paper the variable x will denote the moving (galilean) variable $x - ct$. With a slight abuse of notation, traveling wave solutions to the original system (1.5) transform into stationary solutions $(U, V)(x)$ of the new system (3.1) and satisfy the “profile” equations

$$cU_x + V_x + f(U) = 0, \quad U_x + c\tau V_x - V = 0, \tag{3.2}$$

together with the asymptotic limits (1.9). Furthermore, the convergence is exponential,

$$|\partial_x^j(U - U_\pm, V)(x)| \leq C \exp(-\nu|x|), \quad x \in \mathbb{R} \quad (3.3)$$

for some $C, \nu > 0$ and $j = 0, 1, 2$. It is to be noted that $U_x, V_x \in H^1(\mathbb{R}; \mathbb{R})$. Moreover, by a bootstrapping argument and the second equation in (3.2), it is easy to verify that $U_{xx}, V_{xx} \in H^1(\mathbb{R}; \mathbb{R})$.

3.1. Perturbation equations and the spectral problem. Consider a solution to the nonlinear system (3.1) of the form $(u, v)(x, t) + (U, V)(x)$, being u and v perturbation variables. Upon substitution (and using the profile equations (3.2)) we arrive at the following nonlinear system for the perturbation:

$$\begin{aligned} u_t &= cu_x + v_x + f(u + U) - f(u), \\ \tau v_t &= u_x + c\tau v_x - v. \end{aligned} \quad (3.4)$$

The standard strategy to prove stability of the traveling wave is based on linearizing system (3.4) around the wave. The subsequent analysis can be divided into three steps: the spectral analysis of the resulting linearized operator, the establishment of linear stability estimates for the associated semigroup, and the nonlinear stability under small perturbations to solutions to (3.4). Thus, we first linearize last system around the profile solutions (U, V) . The result is

$$\begin{aligned} u_t &= cu_x + v_x + f'(U)u, \\ \tau v_t &= u_x + c\tau v_x - v. \end{aligned}$$

Specializing these equations to perturbations of the form $e^{\lambda t}(\hat{u}, \hat{v})$, where $\lambda \in \mathbb{C}$ is the spectral parameter and $(\hat{u}, \hat{v})(x)$ belongs to an appropriate Banach space X , we obtain a naturally associated spectral problem

$$\begin{aligned} \lambda \hat{u} &= c\hat{u}_x + \hat{v}_x + f'(U)\hat{u}, \\ \lambda \tau \hat{v} &= \hat{u}_x + c\tau \hat{v}_x - \hat{v}. \end{aligned}$$

With a slight abuse of notation we denote again $(\hat{u}, \hat{v})^\top = (u, v)^\top \in X$. Henceforth, for each $\tau \in (0, \tau_m)$ we are interested in studying the spectral problem

$$\mathcal{L}^\tau \begin{pmatrix} u \\ v \end{pmatrix} = \lambda \begin{pmatrix} u \\ v \end{pmatrix}, \quad \begin{pmatrix} u \\ v \end{pmatrix} \in D \subset X, \quad (3.5)$$

where \mathcal{L}^τ denotes the first order differential operator determined by

$$\mathcal{L}^\tau = -\mathbf{B}^{-1}(\mathbf{A} \partial_x + \mathbf{C}(x)), \quad (3.6)$$

with domain D in X , and where

$$\mathbf{A} = \begin{pmatrix} -c & -1 \\ -1 & -c\tau \end{pmatrix}, \quad \mathbf{B} = \begin{pmatrix} 1 & 0 \\ 0 & \tau \end{pmatrix}, \quad \mathbf{C}(x) = \begin{pmatrix} -a(x) & 0 \\ 0 & 1 \end{pmatrix}, \quad (3.7)$$

and

$$a(x) := f'(U).$$

In this analysis we choose the perturbation space as $X = L^2(\mathbb{R}; \mathbb{C}^2)$, with dense domain $D = H^2(\mathbb{R}; \mathbb{C}^2)$, which corresponds to the study of stability under *localized* perturbations. In this fashion, we obtain a family of closed, densely defined first order operators in $L^2(\mathbb{R}; \mathbb{C}^2)$, parametrized by $\tau \in (0, \tau_m)$.

It is to be observed that \mathcal{L}^τ is not defined for $\tau = 0$, where \mathbf{B} becomes singular. Formally, in the limit $\tau \rightarrow 0^+$ system (3.4) can be written (after substitution) as the scalar perturbation equation for the parabolic Allen-Cahn (or Nagumo) front:

$$u_t = u_{xx} + c_0 u_x + f(U^0 + u) - f(U^0),$$

where U^0 denotes the unique (up to translations) traveling wave solution to the parabolic Allen-Cahn equation (1.4), traveling with speed $c_0 = c|_{\tau=0}$. Its linearization leads to the well-studied spectral problem for the operator $\mathcal{L}_0 : H^2(\mathbb{R}; \mathbb{C}) \rightarrow L^2(\mathbb{R}; \mathbb{C})$, defined by

$$\mathcal{L}_0 u := u_{xx} + c_0 u_x + \bar{a}(x)u = \lambda u, \quad u \in H^2(\mathbb{R}; \mathbb{C}),$$

where $\bar{a}(x) = f(U^0)$. The stability of the parabolic traveling front is a well-known fact: it was first established by Fife and McLeod [13] using maximum principles. The spectral analysis of the operator \mathcal{L}_0 can be found in [22, pp.128–131], and in [29, Chapter 2]. The following proposition summarizes the spectral stability properties of the parabolic front.

Proposition 3.1 (cf. [22, 29]). *There exists $\omega_0 > 0$ such that the spectrum $\sigma(\mathcal{L}_0)$ of the operator \mathcal{L}_0 can be decomposed as*

$$\sigma(\mathcal{L}_0) = \{0\} \cup \sigma_-^{(0)},$$

where $\lambda = 0$ is an (isolated) eigenvalue with algebraic multiplicity equal to one and eigenspace generated by $U_x^0 \in L^2(\mathbb{R}; \mathbb{C})$, and $\sigma_-^{(0)}$ is contained in the half-space $\{\lambda \in \mathbb{C} : \operatorname{Re} \lambda \leq -\omega_0\}$.

Since the operators \mathcal{L}^τ have been defined on the appropriate spaces, the standard definitions for the resolvent $\rho(\mathcal{L}^\tau)$ and spectrum $\sigma(\mathcal{L}^\tau)$ follow (see [9, 30] and Section 3.2 below). Our goal is to establish the spectral stability for the family of operators (3.6), for parameter values $\tau \in (0, \tau_m)$, by proving a result analogous to Proposition 3.1:

Theorem 3.2 (Spectral stability). *For each $\tau \in (0, \tau_m)$, there exists $\omega_0(\tau) > 0$ such that the spectrum $\sigma(\mathcal{L}^\tau)$ of the operator \mathcal{L}^τ can be decomposed as*

$$\sigma(\mathcal{L}^\tau) = \{0\} \cup \sigma_-^{(\tau)},$$

where $\lambda = 0$ is an (isolated) eigenvalue with algebraic multiplicity equal to one and eigenspace generated by $(U_x, V_x) \in D(\mathcal{L}^\tau)$, and $\sigma_-^{(0)}$ is contained in the half-space $\{\lambda \in \mathbb{C} : \operatorname{Re} \lambda \leq -\omega_0(\tau)\}$.

The approach to prove Theorem 3.2 is based on rewriting the spectral problem as a first order system with the eigenvalue as a parameter. Then,

applying a general theorem for convergence of approximate flows (cf. [46]), we show that the spectral stability for $\tau = 0$ persists for $\tau \sim 0^+$. By a continuation argument, we extend the result to the whole parameter domain $\tau \in (0, \tau_m)$.

3.2. Reformulation of the spectral problem. Set $\tau \in (0, \tau_m)$. Component-wise the spectral problem (3.5) can be written as

$$\begin{aligned} cu_x + v_x + (a(x) - \lambda)u &= 0, \\ u_x + c\tau v_x - (1 + \tau\lambda)v &= 0. \end{aligned} \quad (3.8)$$

Just like for the original nonlinear Allen-Cahn model with relaxation (1.5), the v variable can be eliminated to obtain a second order equation for u (a spectral version of Kac's trick): multiply the first equation by $c\tau$, subtract it from the second and differentiate with respect to x . The result is the following second order spectral equation,

$$(1 - c^2\tau)u_{xx} + c(1 + \tau(2\lambda - a))u_x + ((1 + \tau\lambda)(a(x) - \lambda) - c\tau a'(x))u = 0. \quad (3.9)$$

Following Alexander, Gardner and Jones [2], we recast the scalar spectral equation (3.9) as a first order system of the form

$$\mathbf{w}_x = \mathbf{A}^\tau(x, \lambda)\mathbf{w}, \quad (3.10)$$

where $\mathbf{w} = (u, u_x)^\top$ and, for $a = a(x)$ and $a' = a'(x)$,

$$\mathbf{A}^\tau(x, \lambda) := \frac{1}{1 - c^2\tau} \begin{pmatrix} 0 & 1 - c^2\tau \\ c\tau a' + (1 + \tau\lambda)(\lambda - a) & c(\tau a - 1 - 2\tau\lambda) \end{pmatrix}. \quad (3.11)$$

Observe that the coefficient matrices (3.11) can be written as

$$\mathbf{A}^\tau(x, \lambda) = \mathbf{A}_0^\tau(x) + \lambda\mathbf{A}_1^\tau(x) + \lambda^2\mathbf{A}_2^\tau(x),$$

where

$$\begin{aligned} \mathbf{A}_0^\tau(x) &:= \mathbf{A}^\tau(x, 0) = \frac{1}{1 - c^2\tau} \begin{pmatrix} 0 & 1 - c^2\tau \\ c\tau a'(x) - a(x) & c(\tau a(x) - 1) \end{pmatrix}, \\ \mathbf{A}_1^\tau(x) &:= \frac{1}{1 - c^2\tau} \begin{pmatrix} 0 & 0 \\ 1 - \tau a(x) & -2c\tau \end{pmatrix}, \\ \mathbf{A}_2^\tau(x) &:= \frac{\tau}{1 - c^2\tau} \begin{pmatrix} 0 & 0 \\ 1 & 0 \end{pmatrix}. \end{aligned}$$

Since $c = c(\tau)$ is a continuous function of $\tau \in [0, \tau_m)$, we reckon that $\mathbf{A}^\tau(\cdot, \lambda)$ is a function from $(\tau, \lambda) \in [0, \tau_m) \times \mathbb{C}$ to $L^\infty(\mathbb{R}; \mathbb{R}^{2 \times 2})$, continuous in τ and analytic (second order polynomial) in λ .

It is a well-known fact (see [50, 2] and the references therein) that an alternate but equivalent definition of the spectra and the resolvent sets associated to the spectral problem (3.5) can be expressed in terms of the first

order systems (3.10). Consider the following family of linear, closed, densely defined operators

$$\begin{aligned} \mathcal{T}^\tau(\lambda) : \overline{D} = H^1(\mathbb{R}; \mathbb{C}^2) &\rightarrow L^2(\mathbb{R}; \mathbb{C}^2), \\ \mathcal{T}^\tau \mathbf{w} &:= \mathbf{w}_x - \mathbf{A}^\tau(x, \lambda) \mathbf{w}, \quad \mathbf{w} \in H^1(\mathbb{R}; \mathbb{C}^2), \end{aligned} \quad (3.12)$$

indexed by $\tau \in (0, \tau_m)$, parametrized by $\lambda \in \mathbb{C}$ and with domain $\overline{D} = H^1(\mathbb{R}; \mathbb{C}^2)$, which is independent of λ and τ . With a slight abuse of notation we call $\mathbf{w} \in H^1(\mathbb{R}; \mathbb{C}^2)$ an *eigenfunction* associated to the eigenvalue $\lambda \in \mathbb{C}$ provided \mathbf{w} is a bounded solution to the equation

$$\mathcal{T}^\tau(\lambda) \mathbf{w} = 0.$$

More precisely, for each $\tau \in [0, \tau_m)$ we define the resolvent ρ , the point spectrum σ_{pt} and the essential spectrum σ_{ess} of problem (3.8) as

$$\begin{aligned} \rho &= \{ \lambda \in \mathbb{C} : \mathcal{T}^\tau(\lambda) \text{ is injective and onto, and } \mathcal{T}^\tau(\lambda)^{-1} \text{ is bounded} \}, \\ \sigma_{\text{pt}} &= \{ \lambda \in \mathbb{C} : \mathcal{T}^\tau(\lambda) \text{ is Fredholm with index zero and non-trivial kernel} \}, \\ \sigma_{\text{ess}} &= \{ \lambda \in \mathbb{C} : \mathcal{T}^\tau(\lambda) \text{ is either not Fredholm or with non-zero index} \}, \end{aligned}$$

respectively. The whole spectrum is $\sigma = \sigma_{\text{ess}} \cup \sigma_{\text{pt}}$. Since each operator $\mathcal{T}^\tau(\lambda)$ is closed, then $\rho = \mathbb{C} \setminus \sigma$ (cf. [30]). When $\lambda \in \sigma_{\text{pt}}$ we call it an eigenvalue, and any element in $\ker \mathcal{T}^\tau(\lambda)$ is an eigenvector.

We call the reader's attention to the fact that, unlike equation (3.5), the spectral problem formulated in terms of the first order systems (3.10) is well defined for $\tau = 0$, with

$$\mathbf{A}^0(x, \lambda) = \begin{pmatrix} 0 & 1 \\ \lambda - a(x) & -c_0 \end{pmatrix},$$

and where $c_0 = c(\tau)|_{\tau=0}$ is the velocity of the parabolic front.

Remark 3.3. Suppose $\tau \in (0, \tau_m)$. If we substitute $\lambda = -1/\tau$ into (3.8) we arrive at the equation

$$(1 - c^2\tau)u_x - c(1 + \tau a(x))u = 0.$$

Taking the real part of the L^2 product of last equation with u we obtain

$$0 = \int_{\mathbb{R}} \underbrace{(1 + \tau a(x))}_{>0} |u|^2 dx \geq 0,$$

inasmuch as $\text{Re} \langle u, u_x \rangle_{L^2} = 0$, and $\tau < \tau_m = 1/\sup |f'|$. This implies that $u = 0$, and hence $v = 0$, showing that $\lambda = -1/\tau$ does not belong to the point spectrum.

3.2.1. On algebraic and geometric multiplicities. In the stability of traveling waves literature, it is customary to analyze the spectrum of a differential operator \mathcal{L} of second (or higher) order, for which there is a natural invertible transformation from the kernel of $\mathcal{L} - \lambda$ to the kernel of a first order operator of the form (3.12). In such cases, the matrices (3.11) are linear in λ and there is a natural correspondence between the Jordan block structures of

$\mathcal{L} - \lambda$ and those of the corresponding operators $\mathcal{T}(\lambda)$ (see [50]). Since we arrived at systems (3.10) through a different transformation (Kac's trick), we must show that such property remains in our case. For each $\tau \in (0, \tau_m)$ and $\lambda \in \sigma_{\text{pt}}$, we call the mapping,

$$\begin{aligned} \mathcal{K} : \ker(\mathcal{L}^\tau - \lambda) &\rightarrow \ker \mathcal{T}^\tau(\lambda), \\ \mathcal{K} \begin{pmatrix} u \\ v \end{pmatrix} &:= \begin{pmatrix} u \\ u_x \end{pmatrix} = \mathbf{w}, \quad \begin{pmatrix} u \\ v \end{pmatrix} \in \ker(\mathcal{L}^\tau - \lambda), \end{aligned} \quad (3.13)$$

as the *spectral Kac's transformation*. It is a one-to-one and onto map. Indeed, if $\mathbf{w}_1 = \mathbf{w}_2 \in \ker \mathcal{T}^\tau(\lambda)$ then $u_1 = u_2$ and $\partial_x u_1 = \partial_x u_2$ a.e., and the first equation in (3.8) yields $\partial_x v_1 = \partial_x v_2$, whereas the second equation implies $v_1 = v_2$ a.e. Thus, $(u_1, v_1)^\top = (u_2, v_2)^\top \in \ker(\mathcal{L}^\tau - \lambda)$. It is onto because for each $\mathbf{w} = (u, u_x)^\top \in \ker \mathcal{T}^\tau(\lambda)$ clearly there exists

$$\begin{pmatrix} u \\ v \end{pmatrix} = \begin{pmatrix} u \\ (1 + \tau\lambda)^{-1}((1 - c^2\tau)u_x + c\tau(\lambda - a(x))u) \end{pmatrix} \in \ker(\mathcal{L}^\tau - \lambda),$$

such that $\mathbf{w} = \mathcal{K}(u, v)^\top$. (Provided, of course, that $\lambda \neq -1/\tau$. But $-1/\tau \notin \sigma_{\text{pt}}$ by Remark 3.3.) Since v satisfies the first equation of (3.8) we conclude that $v \in H^2(\mathbb{R}; \mathbb{C})$ as well.

Proposition 3.4. *Spectral Kac's transformation (3.13) induces a one-to-one correspondence between Jordan chains.*

Proof. Suppose $(\varphi, \psi)^\top \in \ker(\mathcal{L}^\tau - \lambda)$. This is equivalent to the system

$$c\varphi_x + \psi_x + (a(x) - \lambda)\varphi = 0, \quad \varphi_x + c\tau\psi_x - (1 + \tau\lambda)\psi = 0. \quad (3.14)$$

If we take the next element in a Jordan chain, say $(u, v)^\top \in H^2(\mathbb{R}; \mathbb{C}^2)$, solution to

$$(\mathcal{L}^\tau - \lambda) \begin{pmatrix} u \\ v \end{pmatrix} = \begin{pmatrix} \varphi \\ \psi \end{pmatrix},$$

then we obtain the system

$$cu_x + v_x + (a(x) - \lambda)u = \varphi, \quad u_x + c\tau v_x - (1 + \tau\lambda)v = \tau\psi. \quad (3.15)$$

Multiply the first equation by $c\tau$, subtract from the second one, differentiate it, and substitute v_x from the first equation and ψ_x from the second in (3.14). The result is the following scalar equation

$$\begin{aligned} (1 - c^2\tau)u_{xx} + c(1 + \tau(2\lambda - a(x)))u_x \\ + \{(1 + \tau\lambda)(a(x) - \lambda) - c\tau a'(x)\}u = (1 + 2\tau\lambda - \tau a(x))\varphi - 2c\tau\varphi_x. \end{aligned} \quad (3.16)$$

Written as a system for $\mathbf{w}_1 := (u, u_x)^\top$, equation (3.16) is equivalent to

$$\partial_x \mathbf{w}_1 - \mathbf{A}^\tau(x, \lambda)\mathbf{w}_1 = (\mathbf{A}_1^\tau(x) + 2\lambda\mathbf{A}_2^\tau(x)) \begin{pmatrix} \varphi \\ \varphi_x \end{pmatrix}.$$

Generalizing this procedure, we observe that solutions to

$$(\mathcal{L}^\tau - \lambda) \begin{pmatrix} u_j \\ v_j \end{pmatrix} = \begin{pmatrix} u_{j-1} \\ v_{j-1} \end{pmatrix},$$

are in one-to-one correspondence with solutions to the equation $\mathcal{T}^\tau(\lambda)\mathbf{w}_j = (\partial_\lambda \mathbf{A}^\tau(x, \lambda))\mathbf{w}_{j-1}$, where w_j and $(u_j, v_j)^\top$ are related to each other through Kac's transformation. Hence, a Jordan chain for $\mathcal{L}^\tau - \lambda$ induces a Jordan chain for $\mathcal{T}^\tau(\lambda)$ with same block structure and length. \square

Consequently, we have the following definition.

Definition 3.5. *Assume $\lambda \in \sigma_{pt}$. Its geometric multiplicity (g.m.) is the maximal number of linearly independent elements in $\ker \mathcal{T}^\tau(\lambda)$. Suppose $\lambda \in \sigma_{pt}$ has g.m. = 1, so that $\ker \mathcal{T}^\tau(\lambda) = \text{span} \{\mathbf{w}_0\}$. We say λ has algebraic multiplicity (a.m.) equal to m if we can solve $\mathcal{T}^\tau(\lambda)\mathbf{w}_j = (\partial_\lambda \mathbf{A}^\tau(x, \lambda))\mathbf{w}_{j-1}$, for each $j = 1, \dots, m-1$, with $\mathbf{w}_j \in H^1$, but there is no bounded H^1 solution \mathbf{w} to $\mathcal{T}^\tau(\lambda)\mathbf{w} = (\partial_\lambda \mathbf{A}^\tau(x, \lambda))\mathbf{w}_{m-1}$. For an arbitrary eigenvalue $\lambda \in \sigma_{pt}$ with g.m. = l , the algebraic multiplicity is defined as the sum of the multiplicities $\sum_k^l m_k$ of a maximal set of linearly independent elements in $\ker \mathcal{T}^\tau(\lambda) = \text{span} \{\mathbf{w}_1, \dots, \mathbf{w}_l\}$.*

Thanks to Proposition 3.4 and Definition 3.5 we readily obtain the following

Corollary 3.6. *For each $\tau \in [0, \tau_m)$, the sets σ_{pt} and $\sigma_{pt}(\mathcal{L}^\tau)$ (the latter defined as the set of complex λ such that $\mathcal{L}^\tau - \lambda$ is Fredholm with index zero and has a non-trivial kernel) coincide, with same algebraic and geometric multiplicities.*

3.3. The (translation invariance) eigenvalue $\lambda = 0$. Here, we prove that $\lambda = 0$ is an eigenvalue of \mathcal{L}^τ for each $\tau \in (0, \tau_m)$ (the eigenvalue associated to translation invariance of the wave, with eigenfunction $(U_x, V_x)^\top$), and, moreover, that it is simple.

Lemma 3.7. *For each $\tau \in (0, \tau_m)$, $\lambda = 0$ is an eigenvalue of \mathcal{L}^τ with geometric multiplicity equal to one, and with eigenspace generated by $(U_x, V_x)^\top \in H^2(\mathbb{R}; \mathbb{C}^2)$.*

Proof. Differentiate system (3.2) with respect to x to verify that (U_x, V_x) is a solution to the spectral system (3.8) with $\lambda = 0$, that is,

$$cU_{xx} + V_x + a(x)V_x = 0, \quad U_x + c\tau V_{xx} - V_x = 0. \quad (3.17)$$

Due to exponential decay (3.3) of the wave, and solving for U_{xx} and V_{xx} in equations (3.17), we observe that $(U_x, V_x)^\top \in H^2(\mathbb{R}; \mathbb{C}^2) = D(\mathcal{L}^\tau)$. This shows that $(U_x, V_x)^\top$ belongs to $\ker \mathcal{L}^\tau$ for each $\tau \in (0, \tau_m)$. Thus, $\lambda = 0 \in \sigma_{pt}(\mathcal{L}^\tau)$. In view of the equivalence established by Kac's spectral transformation (Proposition 3.4), this implies that

$$\mathbf{w}_0 = \begin{pmatrix} U_x \\ U_{xx} \end{pmatrix} \in \ker \mathcal{T}^\tau.$$

To analyze its multiplicity we observe that system (3.8) with $\lambda = 0$ is equivalent to the following scalar equation (substitute $\lambda = 0$ in (3.9)):

$$\mathcal{A}u := a_0 u_{xx} + a_1(x)u_x + a_2(x)u = 0, \quad (3.18)$$

where we have introduced the closed, densely defined auxiliary operator $\mathcal{A} : D(\mathcal{A}) = H^2(\mathbb{R}; \mathbb{C}) \rightarrow L^2(\mathbb{R}; \mathbb{C})$, where $a(x) = f'(U(x))$ as before, and with

$$a_0 = 1 - c^2\tau > 0, \quad a_1(x) = c(1 - \tau a(x)), \quad a_2(x) = a(x) - c\tau a'(x).$$

Let us denote

$$\phi := U_x \in H^2(\mathbb{R}; \mathbb{C}).$$

Clearly, ϕ is a bounded solution to (3.18), and $\lambda = 0$ is an eigenvalue of \mathcal{A} associated to the eigenfunction ϕ .

We shall rewrite (3.18) in self-adjoint form by eliminating the first derivative. To this aim, we introduce the new variable w as follows:

$$u(x) = z(x)w(x), \quad z(x) = \exp\left(\int^x b(y) dy\right). \quad (3.19)$$

A direct calculation shows that

$$u_x = (w_x + wb)z, \quad u_{xx} = (w_{xx} + 2bw_x + (b_x + b^2)w)z.$$

Upon substitution,

$$\mathcal{A}u = (a_0w_{xx} + (a_1(x) + 2a_0b)w_x + (a_0(b_x + b^2) + a_1(x)b + a_2(x))w)z.$$

Choose $b = -a_1(x)/2a_0$. This yields

$$z_x = -\frac{a_1(x)}{2a_0}z, \quad z(x) = \exp\left(-\int^x a_1(y)/2a_0 dy\right),$$

and

$$\mathcal{A}u = (\tilde{\mathcal{A}}w)z = 0,$$

where the self-adjoint operator $\tilde{\mathcal{A}} : H^2(\mathbb{R}; \mathbb{C}) \rightarrow L^2(\mathbb{R}; \mathbb{C})$ is defined as

$$\tilde{\mathcal{A}}w := a_0w_{xx} + h(x)w, \quad h(x) = a_2(x) - \frac{1}{2}a_1'(x) - \frac{1}{4}a_0^{-1}a_1(x)^2.$$

Since $z(x) > 0$ for all x , this readily implies that $\mathcal{A}u = 0$ if and only if $w = uz^{-1} \in \ker \tilde{\mathcal{A}}$.

Upon inspection, we observe that any decaying solution (at $x = \pm\infty$) to $\tilde{\mathcal{A}}w = 0$ converges to zero exponentially with rate

$$\mp \frac{1}{2a_0} \sqrt{(a_1^\pm)^2 - 4a_0 f'(U^\pm)}. \quad (3.20)$$

This is true, in particular, for $\varphi = \phi/z$, because of the behavior at $\pm\infty$ of the weight function z . In view of these observations, we reckon that there is a one-to-one correspondence between L^2 eigenfunctions of \mathcal{A} and $\tilde{\mathcal{A}}$, determined by the change of variables (3.19).

Now suppose that $u \in H^2$ is a solution to $\mathcal{A}u = 0$. Therefore, it decays at $x = \pm\infty$ with rate

$$-\frac{a_1^\pm}{2a_0} \mp \frac{1}{2a_0} \sqrt{(a_1^\pm)^2 - 4a_0 f'(U^\pm)}.$$

This implies that $w = uz^{-1}$ is an L^2 solution to $\tilde{\mathcal{A}}w = 0$ which decays with rate (3.20). Hence, the Wronskian determinant of these two solutions, viz. $w\varphi_x - \varphi w_x$ goes to zero when $x \rightarrow \pm\infty$ and, moreover,

$$a_0(w\varphi_x - \varphi w_x)_x = a_0(w\varphi_{xx} - \varphi w_{xx}) = h(x)w\varphi - h(x)\varphi w = 0,$$

implying that $w\varphi_x - \varphi w_x = 0$ for all $x \in \mathbb{R}$. Therefore, w and φ (and hence, u and ϕ) are linearly dependent.

By the equivalence between solutions to the scalar equation (3.9) and solutions to the first order system (3.10), we have shown that any bounded solution \mathbf{w} to $\mathbf{w}_x = \mathbf{A}^\tau(x, 0)\mathbf{w}$ is a multiple of \mathbf{w}_0 , and consequently $\mathcal{T}^\tau(0)$ is Fredholm with index zero, with non-trivial kernel spanned by \mathbf{w}_0 . Whence, $\lambda = 0 \in \sigma_{\text{pt}}$ with geometric multiplicity equal to one. By Proposition 3.4, this implies, in turn, that $\lambda = 0 \in \sigma_{\text{pt}}(\mathcal{L}^\tau)$ with geometric multiplicity equal to one, and with associated eigenfunction $(U_x, V_x)^\top$. \square

Corollary 3.8. *The adjoint equation*

$$\mathbf{y}_x = -\mathbf{A}^\tau(x, 0)^*\mathbf{y}, \quad (3.21)$$

has a unique (up to constant multiples) bounded solution $\mathbf{y}_0 = (\zeta, \eta)^\top \in H^1(\mathbb{R}; \mathbb{C}^2)$ where $\eta \in H^2(\mathbb{R}; \mathbb{C})$ is the unique bounded solution to

$$\mathcal{A}^*\eta = a_0\eta_{xx} - a_1(x)\eta_x + (a_2(x) - a_1'(x))\eta = 0, \quad (3.22)$$

and $\mathcal{A}^* : H^2(\mathbb{R}; \mathbb{C}) \rightarrow L^2(\mathbb{R}; \mathbb{C})$ denotes the formal adjoint of the auxiliary operator \mathcal{A} .

Proof. Since $\mathcal{T}^\tau(0)$ is Fredholm with index zero and $\ker \mathcal{T}^\tau(0) = \text{span}\{\mathbf{w}_0\}$, by an exponential dichotomies argument (see Remark 3.4 in [50]), the adjoint equation (3.21) has a unique bounded solution $\mathbf{y}_0 \in H^1(\mathbb{R}; \mathbb{C}^2)$. Observing that

$$\begin{aligned} -\mathbf{A}^\tau(x, 0)^* &= -\mathbf{A}_0^\tau(x)^\top = (1 - c^2\tau)^{-1} \begin{pmatrix} 0 & -(1 - c^2\tau) \\ a(x) - c\tau a'(x) & c(1 - \tau a(x)) \end{pmatrix}^\top \\ &= a_0^{-1} \begin{pmatrix} 0 & a_2(x) \\ -a_0 & a_1(x) \end{pmatrix}, \end{aligned}$$

we arrive at the following system of equations for the components of \mathbf{y}_0 :

$$\zeta_x = a_0^{-1}a_2(x)\eta, \quad \eta_x = -\zeta + a_0^{-1}a_1(x)\eta.$$

Since the coefficients are bounded, by bootstrapping it is easy to verify that $\eta \in H^2(\mathbb{R}; \mathbb{C})$. Thus, differentiate the second equation and substitute the first to arrive at

$$a_0\eta_{xx} - a_1(x)\eta_x + (a_2(x) - a_1'(x))\eta = 0.$$

That the left hand side of last equation is $\mathcal{A}^*\eta$ follows from a direct calculation of the formal adjoint. \square

Lemma 3.9. *For each $\tau \in (0, \tau_m)$ the algebraic multiplicity of $\lambda = 0 \in \sigma_{\text{pt}}(\mathcal{L}^\tau)$ is equal to one.*

Proof. We define the quantity

$$\Gamma := \langle \mathbf{y}_0, \mathbf{A}_1^\tau(x) \mathbf{w}_0 \rangle_{L^2} = \int_{-\infty}^{+\infty} \begin{pmatrix} \zeta \\ \eta \end{pmatrix}^* \mathbf{A}_1^\tau(x) \begin{pmatrix} \phi \\ \phi_x \end{pmatrix} dx. \quad (3.23)$$

Substituting the expression for \mathbf{A}_1^τ we obtain

$$\Gamma = a_0^{-1} \int_{-\infty}^{+\infty} \bar{\eta} ((1 - \tau a(x))\phi - 2c\tau\phi_x) dx.$$

Let us suppose that $(u_1, v_1)^\top \in H^1(\mathbb{R}; \mathbb{C})$, $(u_1, v_1) \neq 0$, is a non-trivial first element of a Jordan chain for \mathcal{L}^τ associated to $\lambda = 0$, that is, a solution to

$$\mathcal{L}^\tau \begin{pmatrix} u_1 \\ v_1 \end{pmatrix} = \begin{pmatrix} U_x \\ V_x \end{pmatrix} \in \ker \mathcal{L}^\tau.$$

Hence, $(u_1, v_1)^\top$ is a solution to system (3.15) with $\lambda = 0$. By substitution, this is equivalent to equation (3.16) for u_1 and with $\lambda = 0$, namely to

$$\mathcal{A}u_1 = (1 - \tau a(x))U_x - 2c\tau U_{xx} = (1 - \tau a(x))\phi - 2c\tau\phi_x.$$

Apply the change of variables (3.19) to last equation to obtain

$$\mathcal{A}u_1 = z(\tilde{\mathcal{A}}w_1) = (1 - \tau a(x))\phi - 2c\tau\phi_x,$$

where $w_1 = u_1 z^{-1}$. Now, since z is real and $\tilde{\mathcal{A}}$ is self-adjoint, we obtain

$$\Gamma = a_0^{-1} \int_{-\infty}^{+\infty} \bar{z}\bar{\eta}\tilde{\mathcal{A}}w_1 dx = a_0^{-1} \langle z\eta, \tilde{\mathcal{A}}w_1 \rangle_{L^2} = a_0^{-1} \langle \tilde{\mathcal{A}}(z\eta), w_1 \rangle_{L^2}.$$

Use equation (3.22) to compute

$$(z\eta)_{xx} = -a_0^{-1}h(x)z\eta,$$

yielding $\tilde{\mathcal{A}}(z\eta) = a_0(z\eta)_{xx} + h(x)z\eta = 0$. We conclude that $\Gamma = 0$.

Therefore, the contraposition holds true: if $\Gamma \neq 0$ then there exists no non-trivial first element of the Jordan chain. In other words, if we show that $\Gamma \neq 0$ then the algebraic multiplicity of $\lambda = 0$ is equal to one. To compute Γ we make the observation that the unique bounded solution to $\mathcal{A}^*\eta = 0$ is precisely $\eta = z^{-2}\phi$. Indeed, by a direct calculation we get

$$\begin{aligned} \eta_x &= \frac{1}{z^2}(\phi_x + a_0^{-1}a_1(x)\phi), \quad \text{and,} \\ \eta_{xx} &= \frac{a_0^{-1}a_1(x)}{z^2}(\phi_x + a_0^{-1}a_1(x)\phi) + \frac{1}{z^2}(\phi_{xx} + a_0^{-1}a_1'(x)\phi + a_0^{-1}a_1(x)\phi_x). \end{aligned}$$

This yields

$$\mathcal{A}^*\eta = \frac{1}{z^2}(a_0\phi_{xx} + a_1(x)\phi_x + a_2(x)\phi) = \frac{1}{z^2}\mathcal{A}\phi = 0.$$

Substituting in the expression for Γ , and since ϕ is real, after integration by parts one gets

$$\begin{aligned}\Gamma &= a_0^{-1} \int_{-\infty}^{+\infty} z^{-2} \phi((1 - \tau a(x))\phi - 2c\tau\phi_x) dx \\ &= a_0^{-1} \int_{-\infty}^{+\infty} z^{-2} |\phi|^2 (1 - \tau a(x)) dx - 2c\tau a_0^{-1} \int_{-\infty}^{+\infty} z^{-3} z_x |\phi|^2 dx \\ &= a_0^{-1} (1 + c^2 \tau a_0^{-1}) \int_{-\infty}^{+\infty} |1 - \tau a(x)| z^{-2} |\phi|^2 dx,\end{aligned}$$

because $1 - \tau a(x) > 0$ for all x if $\tau \in (0, \tau_m)$. Since $\phi \not\equiv 0$ a.e. we conclude that $\Gamma > 0$ and the proof is complete. \square

Remark 3.10. It is well known that the integral

$$\Gamma = \langle \mathbf{y}_0, ((d/d\lambda)\mathbf{A}^\tau(x, \lambda))|_{\lambda=0} \mathbf{w}_0 \rangle_{L^2},$$

known as a *Melnikov integral*, decides whether $\lambda = 0$ has higher algebraic multiplicity: Γ is proportional, modulo a non-vanishing orientation factor, to the derivative of the Evans function $D'(0)$ at $\lambda = 0$ (see Definition (3.42) below); thus, if $\Gamma \neq 0$ then the algebraic multiplicity is equal to one. See [50], Section 4.2.1 for further information.

3.4. Further properties of the point spectrum. Next, we use energy estimates to show that there are no purely imaginary eigenvalues different from zero.

Lemma 3.11. *If λ is an eigenvalue for (3.8) and $\lambda \in i\mathbb{R}$, then $\lambda = 0$.*

Proof. Let $\lambda \in i\mathbb{R}$ be such that equation (3.9) is satisfied for some function u . Applying the transformation (3.19) of the proof of Lemma 3.7, i.e. $u(x) = w(x)z(x)$ with $z(x) = \exp(-\int^x b)$ and $b = -a_1/2a_0$, equation is transformed into

$$w_{xx} + \alpha\lambda w_x - \beta(x, \lambda)w = 0,$$

with

$$\begin{aligned}\alpha &= \frac{2c\tau}{1 - c^2\tau}, \\ \beta(x, \lambda) &= \frac{1}{4a_0^2} (a_1(x)^2 - 4a_0a_2(x) - 2a_0a_1'(x)) + \frac{(1 - \tau a(x))}{a_0^2} \lambda + \frac{\tau}{a_0} \lambda^2.\end{aligned}$$

Multiplying by \bar{w} , we infer the relation

$$|w_x|^2 - (\bar{w}w_x)_x + \alpha\lambda\bar{w}w_x + \beta(x, \lambda)|w|^2 = 0.$$

Thus, integrating in \mathbb{R} and taking the imaginary part one obtains

$$\int_{\mathbb{R}} \text{Im} \lambda \{ 2c\tau(1 - c^2\tau)\text{Re}(w_x\bar{w}) + (1 - \tau a(x))|w|^2 \} dx = 0.$$

since, by assumption, $\lambda \in i\mathbb{R}$. For $\lambda \neq 0$, thanks to the relation

$$\text{Re}(\bar{w}w_x) = \frac{1}{2}(|w|^2)_x,$$

the previous equality implies $w = 0$ a.e. since $1 - \tau a(x) > 0$. \square

3.5. Consistent splitting and essential spectrum. Let us look at the asymptotic (constant coefficient) systems derived from (3.11) when we take the limit as $x \rightarrow \pm\infty$. If we define the positive parameters

$$\begin{aligned} 0 < \delta_{\pm} &:= - \lim_{x \rightarrow \pm\infty} a(x) = - \lim_{x \rightarrow \pm\infty} f'(U) = -f'(U_{\pm}) \\ 0 < b_{\pm} &:= \lim_{x \rightarrow \pm\infty} (1 - \tau f'(U)) = 1 + \tau \delta_{\pm}, \end{aligned}$$

for each $\tau \in (0, \tau_m)$, then systems (3.10) tend to the constant coefficient asymptotic systems

$$\mathbf{w}_x = \mathbf{A}_{\pm}^{\tau}(\lambda) \mathbf{w}, \quad (3.24)$$

where

$$\begin{aligned} \mathbf{A}_{\pm}^{\tau}(\lambda) &:= \lim_{x \rightarrow \pm\infty} \mathbf{A}^{\tau}(x, \lambda) \\ &= (1 - c^2\tau)^{-1} \begin{pmatrix} 0 & 1 - c^2\tau \\ \tau\lambda^2 + \lambda b_{\pm} + \delta_{\pm} & -c(b_{\pm} + 2\tau\lambda) \end{pmatrix}. \end{aligned} \quad (3.25)$$

The localization of the essential spectrum of problem (3.8) is determined by systems (3.24). Let us denote the characteristic polynomial of $\mathbf{A}_{\pm}^{\tau}(\lambda)$ as

$$\pi_{\pm}^{(\tau, \lambda)}(\kappa) := \det(\mathbf{A}_{\pm}^{\tau}(\lambda) - \kappa I). \quad (3.26)$$

Thus, we compute

$$\begin{aligned} \det(\kappa I - (1 - c^2\tau)\mathbf{A}_{\pm}^{\tau}(\lambda)) &= \det \begin{pmatrix} \kappa & -(1 - c^2\tau) \\ -(\tau\lambda^2 + \lambda b_{\pm} + \delta_{\pm}) & \kappa - c(b_{\pm} + 2\tau\lambda) \end{pmatrix} \\ &= \kappa^2 + \kappa c(b_{\pm} + 2\tau\lambda) - (1 - c^2\tau)(\tau\lambda^2 + \lambda b_{\pm} + \delta_{\pm}). \end{aligned}$$

Hence, if we assume $\kappa = i\xi$, $\xi \in \mathbb{R}$, is a purely imaginary root of (3.26), then

$$\xi^2 - ic\xi(b_{\pm} + 2\tau\lambda) + (1 - c^2\tau)(\tau\lambda^2 + \lambda b_{\pm} + \delta_{\pm}) = 0. \quad (3.27)$$

Equation (3.27) is the dispersion relation of wave solutions to the constant coefficient equations (3.24). Its λ -roots, functions of $\xi \in \mathbb{R}$, define algebraic curves in the complex plane. They bound the essential spectrum on the right as we shall verify. We denote these curves as

$$\lambda = \lambda_{1,2}^{\pm}(\xi), \quad \xi \in \mathbb{R}. \quad (3.28)$$

It is to be noticed that $\lambda = 0$ does not belong to any of the algebraic curves (3.28) inasmuch as

$$\operatorname{Re}(\xi^2 - ic\xi b_{\pm} + (1 - c^2\tau)\delta_{\pm}) = \xi^2 + (1 - c^2\tau)\delta_{\pm} > 0,$$

for all $\xi \in \mathbb{R}$.

3.5.1. *Analysis of the dispersion relation.* Fix $0 < \tau < \tau_m$. Suppose that $\lambda(\xi)$ belongs to one of the algebraic curves (3.28) and denote $\eta := \operatorname{Re} \lambda(\xi)$ and $\beta := \operatorname{Im} \lambda(\xi)$. Taking the real and imaginary parts of (3.27) yields

$$\xi^2 + 2c\tau\xi\beta + (1 - c^2\tau)(\tau(\eta^2 - \beta^2) + \eta b_{\pm} + \delta_{\pm}) = 0. \quad (3.29)$$

$$((1 - c^2\tau)\beta - c\xi)(b_{\pm} + 2\tau\eta) = 0. \quad (3.30)$$

We readily notice that if $\eta = 0$ for some $\xi \in \mathbb{R}$ then from equation (3.30) we get $\beta = c\xi/(1 - c^2\tau)$, as $b_{\pm} > 0$. Upon substitution in (3.29) we obtain

$$\xi^2 + \frac{c^2\tau\xi^2}{1 - c^2\tau} + (1 - c^2\tau)\delta_{\pm} = 0,$$

which yields a contradiction with $\delta_{\pm} > 0$, $\tau > 0$ and the subcharacteristic condition (2.2). We conclude that the algebraic curves never cross the imaginary axis: they remain in either the stable or in the unstable complex half plane. Now, from equation (3.30) we distinguish two cases:

$$\text{either } \eta = -\frac{b_{\pm}}{2\tau}, \quad (3.31)$$

$$\text{or } \beta = \frac{c\xi}{1 - c^2\tau}. \quad (3.32)$$

Let us first assume (3.31). Substituting into (3.29) we obtain the equation

$$\tau\beta^2 - \frac{2c\tau\xi}{1 - c^2\tau}\beta - \delta_{\pm} + \frac{b_{\pm}^2}{4\tau} - \frac{\xi^2}{1 - c^2\tau} = 0. \quad (3.33)$$

This equation has real solutions β provided that

$$\begin{aligned} \Delta_1(\xi) &:= \frac{4c^2\tau^2\xi^2}{(1 - c^2\tau)^2} - 4\tau\left(-\delta_{\pm} + \frac{b_{\pm}^2}{4\tau} - \frac{\xi^2}{1 - c^2\tau}\right) \geq 0, \\ &\iff \xi^2(1 - c^2\tau)^{-2} + \delta_{\pm} \geq \frac{b_{\pm}^2}{4\tau}. \end{aligned} \quad (3.34)$$

Secondly, substitute (3.32) into (3.29). The result is

$$\tau\eta^2 + b_{\pm}\eta + \delta_{\pm} + \frac{\xi^2}{(1 - c^2\tau)^2} = 0. \quad (3.35)$$

Last equation has real solutions η if and only if

$$\begin{aligned} \Delta_2(\xi) &:= b_{\pm}^2 - 4\tau\left(\delta_{\pm} + \frac{\xi^2}{(1 - c^2\tau)^2}\right) \geq 0, \\ &\iff \xi^2(1 - c^2\tau)^{-2} + \delta_{\pm} \leq \frac{b_{\pm}^2}{4\tau}. \end{aligned} \quad (3.36)$$

Then, clearly, from (3.34) and (3.36) we have $\operatorname{sgn} \Delta_2 = -\operatorname{sgn} \Delta_1$. Observe, however, that by definition,

$$\frac{b_{\pm}^2}{4\tau} = \frac{(1 + \tau\delta_{\pm})^2}{4\tau} > \delta_{\pm},$$

because $(1 - \delta_{\pm}\tau)^2 > 0$ for all $0 < \tau < \tau_m = 1/\sup |f'|$, $\delta_{\pm} = |f'(1)|, |f'(0)|$. Therefore, for small values of $|\xi|$, (3.36) holds, $\text{sgn } \Delta_2 = +1$, and the only algebraic curve solutions $\lambda = \lambda(\xi)$ are

$$\text{Im } \lambda(\xi) = \beta(\xi) = \frac{c\xi}{1 - c^2\tau}, \quad \text{Re } \lambda(\xi) = \eta(\xi) = \frac{1}{2\tau} \left(-b_{\pm} \pm \sqrt{\Delta_2(\xi)} \right). \quad (3.37)$$

Let $\xi_{\pm}^{(0)}$ be the positive solution to

$$(\xi_{\pm}^{(0)})^2 = (1 - c^2\tau)^2 \left(\frac{b_{\pm}^2}{4\tau} - \delta_{\pm} \right) > 0.$$

Hence, for each $\xi \in (-\xi_{\pm}^{(0)}, \xi_{\pm}^{(0)})$, condition (3.36) holds and the algebraic curves are determined by (3.37). Observe that:

- $\Delta_1(\xi), \Delta_2(\xi) \rightarrow 0$,
- $\eta(\xi) \rightarrow -b_{\pm}/2\tau$, $\beta(\xi) \rightarrow \pm c\xi_{\pm}^{(0)}/(1 - c^2\tau)$,

as $|\xi| \uparrow \xi_{\pm}^{(0)}$. This behavior guarantees the continuity of the algebraic curves at $|\xi| = \xi_{\pm}^{(0)}$, as β tends to the roots of (3.33) and η tends to (3.31). Therefore, for $|\xi| \geq \xi_{\pm}^{(0)}$, $\Delta_1(\xi) \geq 0$ and the solutions $\lambda(\xi)$ are determined uniquely by

$$\text{Im } \lambda(\xi) = \beta(\xi) = \frac{c\xi}{1 - c^2\tau} \pm \frac{\sqrt{\Delta_1(\xi)}}{2\tau}, \quad \text{Re } \lambda(\xi) = \eta(\xi) = -\frac{b_{\pm}}{2\tau}. \quad (3.38)$$

The algebraic curves (3.28) in the case of a cubic reaction (1.3), with $\kappa = 1$ and for the parameter value $\alpha = 3/4$ can be found in Figure 6. To compute them, we approximated the value of the speed c by its lower bound (2.8).

Finally, notice that, for $|\xi| \leq \xi_{\pm}^{(0)}$, from equation (3.37) we obtain the following bound for the real part of λ :

$$\begin{aligned} \text{Re } \lambda = \eta &= \frac{1}{2\tau} \left(-b_{\pm} \pm \sqrt{\Delta_2(\xi)} \right) \leq \frac{1}{2\tau} \left(-b_{\pm} + \sqrt{b_{\pm}^2 - 4\tau\delta_{\pm}} \right) \\ &= \frac{1}{2\tau} (-(1 + \tau\delta_{\pm}) + (1 - \delta_{\pm}\tau)) = -\delta_{\pm} < -\frac{\delta_{\pm}}{2}. \end{aligned}$$

Likewise, when $|\xi| \geq \xi_{\pm}^{(0)}$, we have the uniform bound

$$\text{Re } \lambda = \eta = -\frac{b_{\pm}}{2\tau} = -\frac{1 + \tau\delta_{\pm}}{2\tau} < -\frac{\delta_{\pm}}{2},$$

for all $0 < \tau < \tau_m$. We have proved the following

Lemma 3.12. *For all $\tau \in (0, \tau_m)$, there exists a uniform*

$$\chi_0 := \frac{1}{2} \min\{\delta_+, \delta_-\} > 0, \quad (3.39)$$

such that the algebraic curves $\lambda = \lambda_{1,2}^{\pm}(\xi)$, $\xi \in \mathbb{R}$, solutions to the dispersion relations (3.27), satisfy

$$\text{Re } \lambda_{1,2}^{\pm}(\xi) < -\chi_0 < 0, \quad (3.40)$$

for all $\xi \in \mathbb{R}$.

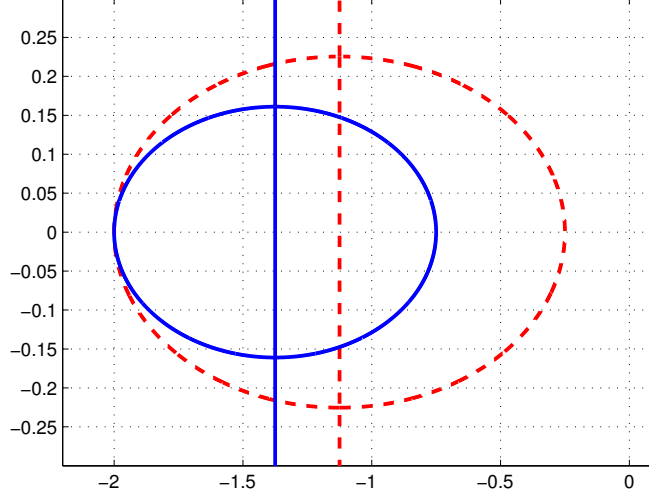


FIGURE 6. Algebraic Fredholm curves (3.28) for systems (3.24) in the case of a cubic nonlinearity (1.3) with $\kappa = 1$, $\tau = 1/2$, and unstable state $u = \alpha = 3/4$. The value of the speed $c = c(\tau)$ is approximated by its lower bound (2.8). The curves at $+\infty$, $\lambda_{1,2}^+(\xi)$ are depicted by the solid continuous (blue; online version) curves, whereas the curves at $-\infty$, $\lambda_{1,2}^-(\xi)$, are represented by the dashed (red; online version) curves.

3.5.2. *Stability of the essential spectrum.* We define the following open, connected region of the complex plane,

$$\Omega := \{\lambda \in \mathbb{C} : \operatorname{Re} \lambda > -\chi_0\}. \quad (3.41)$$

It properly contains the unstable complex half plane $\mathbb{C}_+ = \{\operatorname{Re} \lambda > 0\}$. Denote $\mathbb{S}_{\pm}^{\tau}(\lambda)$ and $\mathbb{U}_{\pm}^{\tau}(\lambda)$ as the stable and unstable eigenspaces of $\mathbf{A}_{\pm}^{\tau}(\lambda)$, respectively.

Lemma 3.13. *For all $\tau \in (0, \tau_m)$, and all $\lambda \in \Omega$, the coefficient matrices $\mathbf{A}_{\pm}^{\tau}(\lambda)$ have no center eigenspace and, moreover,*

$$\dim \mathbb{S}_{\pm}^{\tau}(\lambda) = \dim \mathbb{U}_{\pm}^{\tau}(\lambda) = 1.$$

Proof. Take $\lambda \in \Omega$ and suppose $\kappa = i\xi$, with $\xi \in \mathbb{R}$, is an eigenvalue of $\mathbf{A}_{\pm}^{\tau}(\lambda)$. Then λ belongs to one of the algebraic curves (3.28). But (3.40) yields a contradiction with $\lambda \in \Omega$. Therefore, the matrices $\mathbf{A}_{\pm}^{\tau}(\lambda)$ have no center eigenspace.

Since Ω is a connected region of the complex plane, it suffices to compute the dimensions of $\mathbb{S}_{\pm}^{\tau}(\lambda)$ and $\mathbb{U}_{\pm}^{\tau}(\lambda)$ when $\lambda = \eta \in \mathbb{R}_+$, sufficiently large.

The characteristic polynomial (3.26) of $\mathbf{A}_\pm^\tau(\lambda)$ is

$$\kappa^2 + \kappa c(b_\pm + 2\tau\lambda) - (1 - c^2\tau)(\tau\lambda^2 + \lambda b_\pm + \delta_\pm) = 0.$$

Assuming $\lambda = \eta \in \mathbb{R}_+$, the roots are

$$\kappa = -\frac{c}{2}(b_\pm + 2\tau\eta) \pm \frac{1}{2}\sqrt{c^2(b_\pm + 2\tau\eta)^2 + 4(1 - c^2\tau)(\tau\eta^2 + \eta b_\pm + \delta_\pm)}.$$

Clearly, for each $\eta > 0$, one of the roots is positive and the other is negative. This proves the lemma. \square

In view of last result, the region Ω is often called the *region of consistent splitting* [50].

Corollary 3.14 (Stability of the essential spectrum). *For each $\tau \in (0, \tau_m)$, the essential spectrum is contained in the stable half-plane. More precisely,*

$$\sigma_{\text{ess}} \subset \{\lambda \in \mathbb{C} : \text{Re } \lambda \leq -\chi_0 < 0\}.$$

Proof. Fix $\lambda \in \Omega$. By exponential dichotomies theory (see [7, 50]), since $\mathbf{A}_\pm^\tau(\lambda)$ are hyperbolic, the asymptotic systems (3.10) have exponential dichotomies in $x \in \mathbb{R}_+ = (0, +\infty)$ and in $x \in \mathbb{R}_- = (-\infty, 0)$ with respective Morse indices

$$i_+(\lambda) = \dim \mathbb{U}_+^\tau(\lambda) = 1, \quad i_-(\lambda) = \dim \mathbb{U}_-^\tau(\lambda) = 1.$$

This implies (see [42, 43] and also [50]) that the variable coefficient operators $\mathcal{T}^\tau(\lambda)$ are Fredholm as well, with index

$$\text{ind } \mathcal{T}^\tau(\lambda) = i_+(\lambda) - i_-(\lambda) = 0,$$

showing that $\Omega \subset \mathbb{C} \setminus \sigma_{\text{ess}}$, or equivalently, $\sigma_{\text{ess}} \subset \mathbb{C} \setminus \Omega = \{\text{Re } \lambda \leq -\chi_0 < 0\}$. \square

The significance of Corollary 3.14 is that there is no accumulation of essential spectrum at the eigenvalue $\lambda = 0$, which is an isolated eigenvalue with finite multiplicity. In other words, there is a *spectral gap*.

3.6. Evans function analysis. The Evans function (cf. [2, 29, 50]) is a powerful tool to locate the point spectrum. Thanks to Lemma 3.13, Ω is the open, connected component of $\mathbb{C} \setminus \sigma_{\text{ess}}$ containing the (unstable) right half-plane in which the asymptotic matrices $\mathbf{A}_\pm^\tau(\cdot)$ are hyperbolic and the dimensions of their stable \mathbb{S}_\pm^τ (respectively, unstable \mathbb{U}_\pm^τ) spaces agree. By spectral separation of $\mathbb{U}_\pm^\tau, \mathbb{S}_\pm^\tau$, the associated eigenprojections are analytic in λ and there exists analytic representations for the bases of subspaces \mathbb{S}_\pm^τ and \mathbb{U}_\pm^τ (by a Kato construction, cf. [30, pp.99–102]). In our special (low dimensional) case,

$$\mathbb{S}_+^\tau = \text{span}\{\mathbf{w}_+(\lambda)\}, \quad \mathbb{U}_-^\tau = \text{span}\{\mathbf{w}_-(\lambda)\},$$

where $\mathbf{w}_\pm(\lambda)$ can be chosen analytic in $\lambda \in \Omega$. The associated Evans function

$$D^\tau(\lambda) := \det(\mathbf{w}_-(\lambda), \mathbf{w}_+(\lambda)), \quad (3.42)$$

is defined to locate non-trivial intersections of the initial conditions \mathbf{w}_+ which produce solutions to the variable coefficient systems (3.10) that decay when $x \rightarrow +\infty$, with the initial conditions \mathbf{w}_- which produce solutions to (3.10) that decay at $x \rightarrow -\infty$. The Evans function is not unique, but they all differ by a non-vanishing factor. It is endowed with the following properties:

- D^τ is analytic in $\lambda \in \Omega$;
- $D^\tau(\lambda) = 0$ if and only if $\lambda \in \sigma_{\text{pt}} \cap \Omega$; and,
- the order of λ as a zero of D^τ is equal to its algebraic multiplicity

In our case, we end up with a family of Evans functions $D^\tau(\cdot)$ indexed by $\tau \in [0, \tau_m)$ and defined on Ω . It is to be observed that the region Ω is independent of τ , and that the case when $\tau = 0$ is included in the family. In view of Proposition 3.1, which guarantees the spectral stability of the parabolic Allen-Cahn front, we have the following

Corollary 3.15. *$D^0(\lambda) \neq 0$ for all $\text{Re } \lambda \geq 0$, $\lambda \neq 0$. Moreover, $\lambda = 0$ is a simple zero of $D^0(\cdot)$.*

In order to establish spectral stability in the regime $\tau \in (0, \tau_m)$, we shall apply a result from Evans function theory (see [46]) which assures that, under suitable structural but rather general conditions, the Evans functions for $\tau > 0$ converge uniformly to the Evans function with $\tau = 0$ in bounded regions of $\lambda \in \Omega$. By analyticity and uniform convergence, the non-vanishing property of D^0 persists for D^τ for each $0 < \tau \ll 1$ sufficiently small. Next, by continuity in τ of eigenvalues and by Lemma 3.9 and Lemma 3.11, we rule out possible crossing of eigenvalues across the imaginary axis as τ varies within the full set $(0, \tau_m)$, establishing point spectral stability for all values of τ under consideration.

Therefore, let us consider the family of first order systems (3.10) for $\lambda \in \Omega$ and with τ varying in a compact set $\mathcal{V} := [0, \tau_1]$, with $\tau_1 < \tau_m$. First, we observe that the coefficients $\mathbf{A}^\tau(\cdot, \lambda)$ are functions of $(\lambda, \tau) \in \Omega \times \mathcal{V}$ into $L^\infty(\mathbb{R}; \mathbb{R}^{2 \times 2})$ (the coefficients are bounded), they are analytic in $\lambda \in \Omega$ (second order polynomial in λ), and continuous in $\tau \in \mathcal{V}$ (this follows from the continuity of the coefficients and of the velocity c in τ). Moreover, in view of Theorem 1.1(c),

$$c(\tau) = c_0 + \zeta(\tau), \quad \zeta(\tau) = o(1) \text{ as } \tau \rightarrow 0^+.$$

Here c_0 is, of course, the speed of the traveling wave for the parabolic Allen-Cahn equation (or Nagumo front). Also, notice that from the expressions of the coefficients (3.25) we may write

$$\mathbf{A}_\pm^\tau(\lambda) = \mathbf{A}_\pm^0(\lambda) + (1 - c^2\tau)^{-1} \mathbf{Q}_\pm^\tau(\lambda),$$

where the residual is

$$\begin{aligned} \mathbf{Q}_\pm^\tau(\lambda) &= \begin{pmatrix} 0 & 0 \\ \tau\lambda^2 + \tau(c^2 - a(x))\lambda + c\tau a'(x) & c\tau(cc_0 - a(x) - 2\lambda) - (c - c_0) \end{pmatrix} \\ &= (\lambda^2 + \lambda + 1)O(\tau) + O(|\zeta(\tau)|), \end{aligned}$$

so that

$$|\mathbf{Q}_\pm^\tau(\lambda)| \leq O(\tau + |\zeta(\tau)|)(1 + |\lambda| + |\lambda|^2).$$

Thanks to exponential decay of the wave (3.3) we reckon that the coefficients $\mathbf{A}^\tau(\cdot, \lambda)$ approach exponentially to its limit coefficients $\mathbf{A}_\pm^\tau(\lambda)$ as $x \rightarrow \pm\infty$:

$$|\mathbf{A}^\tau(x, \lambda) - \mathbf{A}_\pm^\tau(\lambda)| \leq Ce^{-\nu|x|}, \quad \text{for } |x| \rightarrow +\infty,$$

uniformly on compact subsets of $(\lambda, \tau) \in \Omega \times \mathcal{V}$. In addition, by Lemma 3.13 the limiting coefficient matrices are hyperbolic with agreeing dimensions of their unstable eigenspaces.

Finally, the geometric separation assumption of Gardner and Zumbrun [15] (namely, that the limits of the spaces \mathbb{S}_\pm^τ and \mathbb{U}_\pm^τ along λ -rays, $\lambda = r\lambda_0$ as $r \rightarrow 0^+$, $\lambda_0 \in \Omega$, are continuous) holds trivially in our case as the matrices $\mathbf{A}_\pm^\tau(0)$ are hyperbolic and the eigenspaces are one-dimensional with uniform spectral separation.

To sum up, we have verified that assumptions (A0)-(A1)-(A2) in [46, p.894] are satisfied, and the systems (3.10) belong to the generic class of equations for which there is convergence of approximate flows [46, Section 2]. We need to verify one final hypothesis to apply [46, Proposition 2.4].

Lemma 3.16. *Let $(\lambda, \tau) \in \Omega \times \mathcal{V}$. Then the stable eigenvector $\mathbf{w}_+(\lambda)$ of $\mathbf{A}_+^\tau(\lambda)$ and the unstable eigenvector $\mathbf{w}_-(\lambda)$ of $\mathbf{A}_-^\tau(\lambda)$ converge as $\tau \rightarrow 0^+$ with rate $\eta(\tau) := O(\tau + |\zeta(\tau)|)$ to the stable and unstable eigenvectors of $\mathbf{A}_+^0(\lambda)$ and $\mathbf{A}_-^0(\lambda)$, respectively. Moreover, for all $\tau \in \mathcal{V}$,*

$$|(\mathbf{A}^\tau - \mathbf{A}_\pm^\tau) - (\mathbf{A}^0 - \mathbf{A}_\pm^0)| \leq C_1\eta(\tau)e^{-\tilde{\nu}|x|},$$

as $x \rightarrow \pm\infty$ for some constants $C_1, \tilde{\nu} > 0$, uniformly in compact sets of Ω .

Proof. Let γ be a closed rectifiable contour enclosing the stable eigenvalue of \mathbf{A}_\pm^τ . By continuity on τ , we may as well select γ such that it encloses the stable eigenvalue of \mathbf{A}_\pm^τ for each $\tau > 0$ sufficiently small. By compactness of $\bar{\gamma}$ we have a uniform resolvent bound of the form

$$|(\mathbf{A}_+^0 - z)^{-1}| \leq C, \quad z \in \gamma.$$

Thus, expanding,

$$\begin{aligned} (\mathbf{A}_+^\tau - z)^{-1} &= (\mathbf{A}_+^0 - z + (1 - c^2\tau)^{-1}\mathbf{Q}_+^\tau)^{-1} \\ &= ((\mathbf{A}_+^0 - z)(I + (\mathbf{A}_+^0 - z)^{-1}(1 - c^2\tau)^{-1}\mathbf{Q}_+^\tau))^{-1} \\ &= (I + (\mathbf{A}_+^0 - z)^{-1}(1 - c^2\tau)^{-1}\mathbf{Q}_+^\tau)^{-1}(\mathbf{A}_+^0 - z)^{-1} \\ &= (I + O(|\eta(\tau)|))(\mathbf{A}_+^0 - z)^{-1}. \end{aligned}$$

Here $\eta(\tau)$ depends on $|\mathbf{A}_+^0|$. Therefore, the (one-dimensional) projection \mathbf{P}_+^τ onto \mathbb{S}_+^τ satisfies the bound

$$\begin{aligned} |\mathbf{P}_+^\tau(\lambda) - \mathbf{P}_+^0(\lambda)| &= \left| \frac{1}{2\pi i} \oint_\gamma (z - \mathbf{A}_+^\tau(\lambda))^{-1} dz - \frac{1}{2\pi i} \oint_\gamma (z - \mathbf{A}_+^0(\lambda))^{-1} dz \right| \\ &\leq \frac{1}{2\pi i} \oint_\gamma O(|\eta(\tau)|) |(\mathbf{A}_+^0 - z)^{-1}| dz \leq C|\eta(\tau)|, \end{aligned}$$

that is, $\mathbf{P}_+^\tau(\lambda) = \mathbf{P}_+^0(\lambda) + O(|\eta(\tau)|)$, showing that $\mathbf{w}_+(\lambda) \rightarrow \mathbf{w}_+^0(\lambda)$ as $\tau \rightarrow 0^+$ with rate $|\eta(\tau)|$ in Ω -neighborhoods of λ . The same applies to the unstable eigenvectors. The second assertion is an immediate consequence of the exponential decay (3.3) of the coefficients. \square

3.7. Resolvent estimates and proof of Theorem 3.2. In order to give a complete proof of Theorem 3.2, we establish a general resolvent estimates, based on an approximate diagonalization technique introduced by Mascia and Zumbrun [33].

3.7.1. Resolvent estimates. Given two real symmetric matrices $\mathbf{A}, \mathbf{B} \in \mathbb{R}^{n \times n}$, a real matrix valued function $x \mapsto \mathbf{C}(x)$ defined for any $x \in \mathbb{R}$, and $\lambda \in \mathbb{C}$, let us consider the *resolvent equation*

$$\mathbf{A}\mathbf{w}_x + (\lambda\mathbf{B} + \mathbf{C}(x))\mathbf{w} = \mathbf{f}, \quad \mathbf{f} \in H^m(\mathbb{R}; \mathbb{C}^n), \quad (3.43)$$

for the unknown $\mathbf{w} \in H^m(\mathbb{R}; \mathbb{C}^n)$. Here, the concern is to show that, for appropriate choices of sets $\tilde{\Omega} \subset \mathbb{C}$, there exists some constant M such that for any solution $\mathbf{w} = \mathbf{w}(\cdot, \lambda)$ to (3.43) with $\lambda \in \tilde{\Omega}$, there holds

$$|\mathbf{w}(\cdot, \lambda)|_{H^m} \leq M|\mathbf{f}|_{H^m}. \quad (3.44)$$

The first classical result, consequence of the underlying hyperbolic problem from which (3.43) arises, provides an estimate for sets $\tilde{\Omega}$ composed by numbers with large positive real part.

Proposition 3.17. *Given $m \in \mathbb{N}$, let \mathbf{B} be positive definite and $\mathbf{C} = \mathbf{C}(x)$ uniformly bounded in \mathbb{R} together with its derivatives of order $j = 1, \dots, m$. Then there exist $L > 0$ and $M = M(m, L)$ such that for any λ with $\operatorname{Re} \lambda \geq L$ there holds*

$$|\mathbf{w}(\cdot, \lambda)|_{H^m} \leq \frac{M}{\operatorname{Re} \lambda} |\mathbf{f}|_{H^m}. \quad (3.45)$$

Proof. As a first step, let us consider the case of L^2 , i.e. $m = 0$. We recall that if \mathbf{A} is a constant real symmetric matrix then

$$\mathbf{w}^* \mathbf{A} \mathbf{w}_x = \frac{1}{2} (\mathbf{w}^* \mathbf{A} \mathbf{w})_x.$$

Taking the scalar product of (3.43) against \mathbf{w}^* and integrating in \mathbb{R} , we get

$$\lambda \langle \mathbf{w}, \mathbf{B} \mathbf{w} \rangle_{L^2} + \langle \mathbf{w}, \mathbf{C}(x) \mathbf{w} \rangle_{L^2} = \langle \mathbf{w}, \mathbf{f} \rangle_{L^2}.$$

Since \mathbf{B} is symmetric, the term $\langle \mathbf{w}, \mathbf{B} \mathbf{w} \rangle_{L^2}$ is real; thus, taking the real part, we infer that there exists some constant $C > 0$ such that

$$(\operatorname{Re} \lambda) \langle \mathbf{w}, \mathbf{B} \mathbf{w} \rangle_{L^2} \leq C (|\mathbf{w}|_{L^2}^2 + |\mathbf{f}|_{L^2}^2)$$

having used the standard Young inequality. As a final step, under the hypothesis that \mathbf{B} is positive definite, it is possible to absorb the term with \mathbf{w} at the right-hand side into the corresponding term in the left-hand side and deduce (3.45) with $m = 0$.

Next, we may proceed inductively, assuming estimate (3.45) for any $j = 0, 1, \dots, m-1$. By differentiation of (3.43), we deduce that the function $\mathbf{z} := d^m \mathbf{w} / dx^m$ solves

$$\mathbf{A} \mathbf{z}_x + (\lambda \mathbf{B} + \mathbf{C}(x)) \mathbf{z} = \frac{d^m \mathbf{f}}{dx^m} - \sum_{j=0}^{m-1} \binom{m}{j} \frac{d^{m-j} \mathbf{C}}{dx^{m-j}} \frac{d^j \mathbf{w}}{dx^j}. \quad (3.46)$$

Since the coefficients of the derivatives of \mathbf{C} are assumed to be bounded, as a consequence of (3.45) with $m = 0$, we infer the estimate

$$|z(\cdot, \lambda)|_{L^2} \leq \frac{C}{\operatorname{Re} \lambda} \left(\left| \frac{d^m \mathbf{f}}{dx^m} \right|_{L^2} + \sum_{j=0}^{m-1} \left| \frac{d^j w}{dx^j} \right|_{L^2} \right)$$

for some $C > 0$. Then, the inductive assumption provides the conclusion. \square

Next, we turn to the problem of proving (3.44) for sets $\tilde{\Omega}$ contained in the half plane $\{\operatorname{Re} \lambda \geq 0\}$ and with sufficiently large modulus. Of course, additional restrictions on the matrices $\mathbf{A}, \mathbf{B}, \mathbf{C}$ are needed. Our approach is based on the approximate diagonalization procedure presented in [33, p.817 and following]. Specifically, let us consider a change of variable $\mathbf{w} = \mathbf{T}(x, \lambda) \mathbf{v}$ with $\mathbf{T}(x, \lambda)$ in the form

$$\mathbf{T}(x, \lambda) = \mathbf{T}_0 (I + \lambda^{-1} \mathbf{T}_1(x))$$

with \mathbf{T}_0 and $\mathbf{T}_1 = \mathbf{T}_1(x)$ to be determined. Plugging into (3.43) and assuming \mathbf{A} invertible, we deduce the equation solved by the new unknown \mathbf{v}

$$\mathbf{v}_x + \tilde{\mathbf{A}}(x, \lambda) \mathbf{v} = \tilde{\mathbf{f}}$$

where

$$\begin{aligned} \tilde{\mathbf{A}}(x, \lambda) &= (I + \lambda^{-1} \mathbf{T}_1)^{-1} \left\{ \lambda \mathbf{T}_0^{-1} \mathbf{A}^{-1} \mathbf{B} \mathbf{T}_0 + \mathbf{T}_0^{-1} \mathbf{A}^{-1} (\mathbf{B} \mathbf{T}_0 \mathbf{T}_1 + \mathbf{C} \mathbf{T}_0) \right. \\ &\quad \left. + \lambda^{-1} (\mathbf{T}_0^{-1} \mathbf{A}^{-1} \mathbf{C} \mathbf{T}_0 \mathbf{T}_1 + \mathbf{T}_1') \right\} \\ \tilde{\mathbf{f}} &= (I + \lambda^{-1} \mathbf{T}_1(x))^{-1} \mathbf{T}_0^{-1} \mathbf{A}^{-1} \mathbf{f} \end{aligned}$$

The matrix $\tilde{\mathbf{A}}$ can be represented as

$$\tilde{\mathbf{A}}(x, \lambda) = \lambda \mathbf{D}_0 + \mathbf{D}_1 + o(1) \quad \lambda \rightarrow \infty$$

where the matrices \mathbf{D}_0 and \mathbf{D}_1 are given by

$$\mathbf{D}_0 := \mathbf{T}_0^{-1} \mathbf{A}^{-1} \mathbf{B} \mathbf{T}_0, \quad \mathbf{D}_1 := [\mathbf{D}_0, \mathbf{T}_1(x)] + \mathbf{T}_0^{-1} \mathbf{A}^{-1} \mathbf{C}(x) \mathbf{T}_0, \quad (3.47)$$

and $[\mathbf{A}, \mathbf{B}] = \mathbf{A} \mathbf{B} - \mathbf{B} \mathbf{A}$. If the matrix $\mathbf{A}^{-1} \mathbf{B}$ is diagonalizable, \mathbf{T}_0 can be chosen so that \mathbf{D}_0 is diagonal and $\mathbf{T}_1 = \mathbf{T}_1(x)$ is such that the matrix \mathbf{D}_1 is diagonal (see [33, Lemma 4.6]). Moreover, since $[\mathbf{D}_0, \mathbf{T}]$ is equal to zero for any diagonal matrix, the term \mathbf{T}_1 can be chosen with zero entries in the principal diagonal. With these choices, the special form of the system satisfied by \mathbf{v} can be used to obtain a different form of estimate (3.44).

Proposition 3.18. *Given $m \in \mathbb{N}$, let the matrices \mathbf{A} , \mathbf{B} and \mathbf{C} be such that \mathbf{A} is invertible, $\mathbf{A}^{-1}\mathbf{B}$ is diagonalizable in \mathbb{R} , and $\mathbf{C} = \mathbf{C}(x)$ is uniformly bounded in \mathbb{R} together with all its derivatives of order $j = 1, \dots, m$. Let the elements of \mathbf{D}_0 and \mathbf{D}_1 , defined in (3.47), be denoted by μ_0^k and μ_1^k , $k = 1, \dots, n$. If μ_0^k and $\operatorname{Re} \mu_1^k$ have the same sign for any k and*

$$\min_{k=1, \dots, n} \inf_{x \in \mathbb{R}} |\operatorname{Re} \mu_1^k| > 0, \quad (3.48)$$

then there exist $R > 0$ and M such that the estimate (3.44) holds for any $\lambda \in \tilde{\Omega}_R := \{|\lambda| \geq R, \operatorname{Re} \lambda \geq 0\}$.

Proof. As in the proof of Proposition 3.17, we initially consider the L^2 -case, i.e. $m = 0$. With the change of variable $\mathbf{v} = \mathbf{T}(x, \lambda)\mathbf{w}$ where \mathbf{T} has been chosen following the above procedure, we end up with a system for the unknown \mathbf{v} , whose k -th component solves

$$\frac{dv_k}{dx} + \left(\lambda \mu_0^k + \mu_1^k(x) \right) v_k = o(1)v_k + \tilde{f}_k.$$

Taking the scalar product against \bar{v}_k , integrating in \mathbb{R} , and taking its real part, we deduce

$$\int_{\mathbb{R}} \left(\operatorname{Re} \lambda \mu_0^k + \operatorname{Re} \mu_1^k(x) \right) |v_k|^2 dx = \operatorname{Re} \int_{\mathbb{R}} (o(1)v_k + \tilde{f}_k) \bar{v}_k dx.$$

For any λ with positive real part, since μ_0^k and $\operatorname{Re} \mu_1^k(x)$ have the same sign, we obtain

$$\int_{\mathbb{R}} \left(\operatorname{Re} \lambda |\mu_0^k| + |\operatorname{Re} \mu_1^k(x)| \right) |v_k|^2 dx \leq o(1)|v|_{L^2}^2 + C|\tilde{f}|_{L^2}^2$$

for some $C > 0$ and then, as a consequence of (3.48),

$$C_0 |\mathbf{v}|_{L^2}^2 \leq o(1) |\mathbf{v}|_{L^2}^2 + C |\tilde{\mathbf{f}}|_{L^2}^2$$

for some $C_0 > 0$. For $|\lambda|$ sufficiently large, the term $o(1)$ can be controlled by C_0 , so that we end up with

$$|\mathbf{v}|_{L^2}^2 \leq C |\tilde{\mathbf{f}}|_{L^2}^2.$$

Finally, since C is uniformly bounded, also \mathbf{T} and \mathbf{T}_1 are, and the estimate can be brought back to the original variable \mathbf{w} .

The case of $m \geq 1$ follows by differentiating (3.43) and proceeding as in the proof of Proposition 3.17. \square

In the case at hand, system (3.43) is two-dimensional and defined by the matrices \mathbf{A} , \mathbf{B} and \mathbf{C} of (3.7). Then, the matrix

$$\mathbf{A}^{-1}\mathbf{B} = \frac{1}{1 - c^2\tau} \begin{pmatrix} -c\tau & \tau \\ 1 & -c\tau \end{pmatrix}$$

has real eigenvalues $\mu_0^\pm = \pm\sqrt{\tau}(1 \mp c\sqrt{\tau})$ and

$$\mathbf{T}_0^{-1}\mathbf{A}^{-1}\mathbf{B}\mathbf{T}_0 = \mathbf{D}_0 = \operatorname{diag}(\mu_0^-, \mu_0^+), \quad \text{where } \mathbf{T}_0 = \begin{pmatrix} -\sqrt{\tau} & \sqrt{\tau} \\ 1 & 1 \end{pmatrix}.$$

Then, straightforward computations give

$$\mathbf{T}_0^{-1} \mathbf{A}^{-1} \mathbf{C}(x) \mathbf{T}_0 = \frac{1}{2\sqrt{\tau}} \begin{pmatrix} -(1 - \tau a)/(1 - c\sqrt{\tau}) & -(1 + \tau a)/(1 - c\sqrt{\tau}) \\ (1 + \tau a)/(1 + c\sqrt{\tau}) & (1 - \tau a)/(1 + c\sqrt{\tau}) \end{pmatrix},$$

(where $a = a(x)$) so that

$$\mathbf{D}_1 = \text{diag}(\mu_1^-, \mu_1^+) = \frac{1}{2\sqrt{\tau}} \text{diag} \left(-\frac{1 - \tau a}{1 - c\sqrt{\tau}}, \frac{1 - \tau a}{1 + c\sqrt{\tau}} \right).$$

Thus, if the function $a = a(x)$ is such that $\sup a < 1/\tau$, then assumption of Proposition 3.18 holds and the resolvent estimate (3.44) holds in $\Omega_R := \{|\lambda| \geq R, \text{Re } \lambda \geq 0\}$ for R sufficiently large.

3.7.2. Proof of Theorem 3.2. In view of Proposition 3.18, take $R > 0$ sufficiently large so that $\sigma_{\text{pt}} \cap \Omega \subset \{|\lambda| \leq R\}$, and consider the following compact subset of Ω :

$$\Omega_R := \{\lambda \in \mathbb{C} : |\lambda| \leq R, \text{Re } \lambda \geq -\frac{1}{2}\chi_0\}.$$

By Lemma 3.16, systems (3.10) satisfy the hypotheses of [46, Proposition 2.4]. Hence, for each $\tau \in \mathcal{V}$ and in a Ω_R -neighborhood of λ , the local Evans functions $D^\tau(\lambda)$ converge uniformly to $D^0(\lambda)$ in a (possible smaller) neighborhood of λ as $\tau \rightarrow 0^+$ with rate $|D^\tau(\cdot) - D^0(\cdot)| = O(\eta(\tau)) = O(\tau + |\zeta(\tau)|) \rightarrow 0$.

By point spectral stability for $\tau = 0$ (Corollary 3.15), and by analyticity and uniform convergence, we conclude that $D^\tau(\lambda) \neq 0$ for $\lambda \in \Omega_R, \text{Re } \lambda \geq 0$, except only at $\lambda = 0$, and for each $0 \leq \tau \ll 1$ sufficiently small. Hence there exists $\tau_0 \in (0, \tau_m)$ such that point spectral stability holds for each $\tau \in (0, \tau_0)$. Finally, noticing that Ω_R contains only isolated eigenvalues with finite multiplicity, and by continuous dependence of eigenvalues of Fredholm operators in Banach spaces with respect to its coefficients (cf. [39]), the eigenvalues $\lambda = \lambda(\tau) \in \sigma_{\text{pt}} \cap \Omega_R$ are continuous functions of $\tau \in (0, \tau_m)$. In view of Lemma 3.11, such eigenvalues may cross the imaginary axis towards the unstable half plane only through the origin. But $\lambda = 0 \in \sigma_{\text{pt}}$ is a simple eigenvalue for each $\tau \in (0, \tau_m)$ as proved in Lemma 3.9. Hence all point spectrum remains in the stable half plane $\text{Re } \lambda < 0$ for all $\tau \in (0, \tau_m)$. This proves the Theorem.

4. DECAYING SEMIGROUP AND NONLINEAR STABILITY

In this Section, we establish the conditions for the generation of a C_0 -semigroup of solutions operators for the linearization around the wave, as well as for its asymptotic decaying properties. We also present the proof of nonlinear (orbital) stability, which uses such information in a key way.

4.1. Generation of the semigroup. We are now ready to establish that each operator \mathcal{L}^τ generates a C_0 semigroup in $L^2(\mathbb{R}; \mathbb{C}^2)$.

Lemma 4.1. *For each $\tau \in (0, \tau_m)$, the operator $\mathcal{L}^\tau : D = H^2(\mathbb{R}; \mathbb{C}^2) \rightarrow L^2(\mathbb{R}; \mathbb{C}^2)$ is the infinitesimal generator of a C_0 -semigroup of quasi-contractions $\{\mathcal{S}(t)\}_{t \geq 0}$, satisfying*

$$\|\mathcal{S}(t)\| \leq e^{\omega t}, \quad (4.1)$$

for some $\omega = \omega(\tau) \in \mathbb{R}$, all $t \geq 0$.

Here $\|\cdot\|$ denotes the operator norm.

Proof. First, we note that the domain $D = H^2(\mathbb{R}; \mathbb{C}^2)$ is dense in $L^2(\mathbb{R}; \mathbb{C}^2)$. Now, for each $\mathbf{u} = (u, v)^\top \in D$:

$$\begin{aligned} \operatorname{Re} \langle \mathbf{u}, \mathcal{L}^\tau \mathbf{u} \rangle_{L^2} &= -\operatorname{Re} \langle \mathbf{u}, \mathbf{B}^{-1}(\mathbf{A}\mathbf{u}_x + \mathbf{C}(x)\mathbf{u}) \rangle_{L^2} \\ &= -\operatorname{Re} \langle \mathbf{u}, \mathbf{B}^{-1}\mathbf{A}\mathbf{u}_x \rangle_{L^2} - \operatorname{Re} \langle \mathbf{u}, \mathbf{B}^{-1}\mathbf{C}(x)\mathbf{u} \rangle_{L^2} \\ &= -\int_{\mathbb{R}} a(x)|u|^2 dx + \tau^{-1}|v|_{L^2}^2 \\ &\leq \sup_{\mathbb{R}} |a(x)| |u|_{L^2}^2 + \tau^{-1}|v|_{L^2}^2 \leq \omega |\mathbf{u}|_{L^2}^2, \end{aligned}$$

with $\omega = \max\{\sup |a(x)|, \tau^{-1}\} > 0$.

Now, thanks to the resolvent estimate (3.44) for any $|\lambda| \geq R$, $\operatorname{Re} \lambda \geq 0$ with R sufficiently large, there are no L^2 solutions to $\mathcal{L}^\tau \mathbf{u} = \lambda_0 \mathbf{u}$ for $\lambda_0 \in \mathbb{R}$, $\lambda_0 > \omega$ and sufficiently large. Thus, for each $\lambda_0 > \omega$ sufficiently large $\mathcal{L} - \lambda_0$ is onto. A direct application of the classical Hille-Yosida theorem [10, 44] yields the result together with the estimate (4.1). \square

As a consequence of the semigroup properties we have that

$$\frac{d}{dt}(\mathcal{S}(t)\mathbf{u}) = \mathcal{S}(t)\mathcal{L}^\tau \mathbf{u} = \mathcal{L}^\tau \mathcal{S}(t)\mathbf{u},$$

for all $\mathbf{u} = (u, v)^\top \in D = H^2(\mathbb{R}; \mathbb{C}^2)$.

Naturally, the growth rate ω of estimate (4.1) is not optimal. Actually, $\omega \rightarrow +\infty$ as $\tau \rightarrow 0^+$, due to the fact that, in the limit, the operator \mathcal{L}^τ is not defined and becomes singular. The optimal growth rate in the appropriate subspace will be provided by spectral stability. The significance of Lemma 4.1 is simply that, for each fixed $\tau \in (0, \tau_m)$, the operator \mathcal{L}^τ is the generator of a C_0 -semigroup. Let us recall the growth bound for a semigroup $\mathcal{S}(t)$:

$$\omega_0 = \inf\{\omega \in \mathbb{R} : \lim_{t \rightarrow +\infty} e^{-\omega t} \|\mathcal{S}(t)\| \text{ exists}\}.$$

We say a semigroup is uniformly (exponentially) stable whenever $\omega_0 < 0$. Let \mathcal{L} be the infinitesimal generator of the semigroup $\mathcal{S}(t)$. Its spectral bound is defined as

$$s(\mathcal{L}) = \sup\{\operatorname{Re} \lambda : \lambda \in \sigma(\mathcal{L})\}.$$

Since the spectral mapping theorem — namely, that, $\sigma(\mathcal{S}(t)) \setminus \{0\} = e^{t\sigma(\mathcal{L})}$ — is *not* true in general for C_0 -semigroups (cf. [10]), for stability purposes we rely on the Gearhart-Prüss theorem [16, 47], which restricts our attention

to semigroups on Hilbert spaces (see also [8, 10]). It states that any C_0 -semigroup $\{\mathcal{S}(t)\}_{t \geq 0}$ on a Hilbert space H is uniformly exponentially stable if and only if its generator satisfies $s(\mathcal{L}) < 0$, and the following resolvent estimate holds:

$$\sup_{\operatorname{Re} \lambda > 0} \|(\mathcal{L} - \lambda)^{-1}\| < +\infty.$$

This task is already substantially completed thanks to the general resolvent estimates of the previous Section.

It is known (see Kato [30, Remark 6.23, p.184]) that if $\lambda \in \mathbb{C}$ is an eigenvalue of a closed operator $\mathcal{L} : D \subset H \rightarrow H$ then $\bar{\lambda}$ is an eigenvalue of \mathcal{L}^* (formal adjoint) with the same geometric and algebraic multiplicities. Also, since H^2 and L^2 are reflexive Hilbert spaces, $\mathcal{L} : D \subset H^2 \rightarrow L^2$ has a formal adjoint which is also densely defined and closed. Moreover, $\mathcal{L}^{**} = \mathcal{L}$ (cf. [30, Theorem 5.29, p.168]). Upon these observations we immediately have the following

Lemma 4.2. *$\lambda = 0$ is an isolated, simple eigenvalue of the formal adjoint*

$$(\mathcal{L}^\tau)^* : D(\mathcal{L}^\tau) = H^2(\mathbb{R}; \mathbb{C}^2) \rightarrow L^2(\mathbb{R}; \mathbb{C}^2),$$

and there exists an eigenfunction $(\Psi, \Phi)^\top \in D(\mathcal{L}^\tau)$ such that $(\mathcal{L}^\tau)^(\Psi, \Phi)^\top = 0$.*

Let us denote the inner product:

$$\Theta := \langle (U_x, V_x), (\Psi, \Phi) \rangle_{L^2} = \int_{-\infty}^{+\infty} \begin{pmatrix} U_x \\ V_x \end{pmatrix}^* \begin{pmatrix} \Psi \\ \Phi \end{pmatrix} dx.$$

It is not hard to see that $\Theta \neq 0$. Indeed, suppose by contradiction that $\Theta = 0$. Then $(\Psi, \Phi)^\top \in (\ker \mathcal{L}^\tau)^\perp = \operatorname{range}(\mathcal{L}^{\tau*})$. Hence, there exists $0 \neq (u, v)^\top \in D(\mathcal{L}^\tau) = H^2$ such that $(\mathcal{L}^\tau)^*(u, v)^\top = (\Psi, \Phi)^\top$. Thus, $((\mathcal{L}^\tau)^*)^2(u, v)^\top = 0$, which is a contradiction with $\lambda = 0$ being a simple eigenvalue of $(\mathcal{L}^\tau)^*$. Thus, we may define the Hilbert space $\tilde{X} \subset L^2(\mathbb{R}; \mathbb{C}^2)$ as the range of the spectral projection,

$$\mathcal{P} \begin{pmatrix} u \\ v \end{pmatrix} := \begin{pmatrix} u \\ v \end{pmatrix} - \Theta^{-1} \langle (u, v), (\Psi, \Phi) \rangle_{L^2} \begin{pmatrix} U_x \\ V_x \end{pmatrix}.$$

In this fashion we project out the eigenspace spanned by the single eigenfunction $(U_x, V_x)^\top$. Outside this eigenspace, the semigroup decays exponentially.

4.2. Linear decay rates. We now observe that on a reflexive Banach space, weak and weak* topologies coincide, and therefore the family of dual operators $\{\mathcal{S}(t)^*\}_{t \geq 0}$, consisting of all the formal adjoints in L^2 is a C_0 -semigroup as well (cf. [10, p.44]). Moreover, the infinitesimal generator of this semigroup is simply $(\mathcal{L}^\tau)^*$ (see [44, Corollary 10.6]). By semigroup properties we readily have

$$\mathcal{S}(t) \begin{pmatrix} U_x \\ V_x \end{pmatrix} = \begin{pmatrix} U_x \\ V_x \end{pmatrix}, \quad \mathcal{S}(t)^* \begin{pmatrix} \Psi \\ \Phi \end{pmatrix} = \begin{pmatrix} \Psi \\ \Phi \end{pmatrix}.$$

As a result of these properties and the definition of the projector it is easy to verify that

$$\mathcal{S}(t)\mathcal{P} = \mathcal{P}\mathcal{S}(t).$$

Hence \tilde{X} is an $\mathcal{S}(t)$ -invariant closed (Hilbert) subspace of $H^2(\mathbb{R}; \mathbb{C}^2)$. So we define the domain

$$\tilde{D} := \{\mathbf{u} \in D \cap \tilde{X} : \mathcal{L}^\tau \mathbf{u} \in \tilde{X}\}$$

and the operator

$$\begin{aligned} \widetilde{\mathcal{L}}^\tau &: \tilde{D} \subset \tilde{X} \rightarrow \tilde{X}, \\ \widetilde{\mathcal{L}}^\tau \mathbf{u} &:= \mathcal{L}^\tau \mathbf{u}, \quad \mathbf{u} \in \tilde{D}, \end{aligned}$$

as the restriction of \mathcal{L}^τ on \tilde{X} . Therefore, $\widetilde{\mathcal{L}}^\tau$ is a closed, densely defined operator on the Hilbert space \tilde{X} . Moreover, we observe that $0 \neq (U_x, V_x)^\top \in \ker \mathcal{P}$. Hence, $\lambda = 0 \notin \sigma_{\text{pt}}(\widetilde{\mathcal{L}}^\tau)$. As a consequence of point spectral stability of \mathcal{L}^τ we readily obtain

$$\sigma(\widetilde{\mathcal{L}}^\tau) \subset \{\lambda \in \mathbb{C} : \text{Re } \lambda < 0\},$$

and hence the spectral bound of $\widetilde{\mathcal{L}}^\tau$ is strictly negative, $s(\widetilde{\mathcal{L}}^\tau) < 0$. By the above observations, we reckon the following

Lemma 4.3. *The family of operators $\{\tilde{\mathcal{S}}(t)\}_{t \geq 0}$, $\tilde{\mathcal{S}}(t) : \tilde{X} \rightarrow \tilde{X}$, defined as*

$$\tilde{\mathcal{S}}(t)\mathbf{u} := \mathcal{S}(t)\mathcal{P}\mathbf{u}, \quad \mathbf{u} \in \tilde{X}, \quad t \geq 0,$$

is a C_0 -semigroup in the Hilbert space \tilde{X} with infinitesimal generator $\widetilde{\mathcal{L}}^\tau$.

Proof. The semigroup properties are inherited from those of $\mathcal{S}(t)$ in $L^2(\mathbb{R}; \mathbb{C}^2)$. That $\widetilde{\mathcal{L}}^\tau$ is the infinitesimal generator follows from Corollary in Section 2.2 of [10], p.61. \square

Finally, we apply Gearhart-Prüss theorem.

Proposition 4.4 (Uniform exponential stability). *For each $\tau \in (0, \tau_m)$ there exist uniform constants $C \geq 1$ and $\theta > 0$ such that*

$$\|\tilde{\mathcal{S}}(t)\mathbf{u}\|_{L^2} \leq C e^{-\theta t} \|\mathbf{u}\|_{L^2}, \quad \mathbf{u} \in \tilde{X}, \quad t \geq 0. \quad (4.2)$$

Proof. In view of the resolvent estimates (3.44), we can find a radius sufficiently large such that, if $|\lambda| \geq R$ and $\text{Re } \lambda \geq 0$, then

$$\|(\mathcal{L}^\tau - \lambda)^{-1}\|_{L^2 \rightarrow L^2} \leq C$$

for some uniform $C > 0$. Since $\widetilde{\mathcal{L}}^\tau = \mathcal{L}^\tau$ on the subspace $\tilde{X} \subset L^2(\mathbb{R}; \mathbb{C}^2)$, the same estimate applies to $\widetilde{\mathcal{L}}^\tau$ outside that half circle. Inside, however, thanks to (strict) point spectral stability of the operator restricted to \tilde{X} , the resolvent of $\widetilde{\mathcal{L}}^\tau$ is uniformly bounded inside the intersection of any ball of finite radius and $\text{Re } \lambda \geq 0$. We conclude that

$$\sup_{\text{Re } \lambda > 0} \|(\widetilde{\mathcal{L}}^\tau - \lambda)^{-1}\|_{\tilde{X} \rightarrow \tilde{X}} \leq C,$$

for some uniform $C > 0$. In addition, $s(\widetilde{\mathcal{L}}^\tau) < 0$. Thus, a direct application of Gearhart-Prüss theorem to the operator $\widetilde{\mathcal{L}}^\tau$ on the Hilbert space \widetilde{X} implies that the semigroup $\widetilde{\mathcal{S}}(t)$ is uniformly exponentially stable, and that estimate (4.2) holds for some $C \geq 1$ and some $\theta > 0$. \square

This result establishes the decaying properties of the linearized operator around the wave, that is, linear stability. The latter can be summarized in the following

Theorem 4.5 (Linear stability). *There exists a projection operator $\mathcal{Q} = I - \mathcal{P}$ with one-dimensional range $\text{span}\{(U_x, V_x)^\top\} \subset L^2(\mathbb{R}; \mathbb{C}^2)$ such that for any $t > 0$*

$$\mathcal{S}(t)\mathcal{Q} = \mathcal{Q}\mathcal{S}(t) = \mathcal{Q} \quad \text{and} \quad \|\mathcal{S}(t)(I - \mathcal{Q})\| \leq C e^{-\theta t}$$

for some $C, \theta > 0$.

4.3. Nonlinear stability. The proof of Theorem 1.2 on nonlinear orbital stability of the traveling fronts for (1.5) is a consequence of the linear decay estimates combined in a smart way with the standard Duhamel representation formula. The main difficulty stems in the fact that a single traveling front is not isolated as a stationary solution and it belongs to a one-dimensional manifold generated by applying an arbitrary translation in space. This is a common feature of many autonomous evolutive PDEs when considered in the whole space as a consequence of the underlying translation invariance of the corresponding initial value problem.

At the linear level, such feature of the problem is expressed by the membership of $\lambda = 0$ to the spectrum of the linearized operator and by the presence of a time-independent projection term into the representation of the solution semigroup. Converting such structure at the nonlinear level amounts in identifying a nonlinear projection operator describing the convergence of a given perturbed initial datum to a translate of the original front. A possible approach is based on the application of the Implicit Function Theorem in Banach spaces and it has been used by Sattinger in the classical paper [51]. For the sake of clarity, we first present here a restyled version of this approach in the framework of Hilbert spaces, as needed in our case, and then apply it to prove Theorem 1.2.

Let \mathcal{W} be a Hilbert space with norm $|\cdot|_{\mathcal{W}}$ and let $B_r(\overline{W})$ be the open ball with center \overline{W} and radius r . Let F be a smooth function from $\mathcal{D} \subset \mathcal{W}$ into \mathcal{W} such that $F(\overline{W}) = 0$ for some $\overline{W} \in \mathcal{D}$. Additionally, let us assume that, for some $r > 0$, there holds

$$\{W \in \mathcal{W} : F(W) = 0\} \cap \{|W - \overline{W}|_{\mathcal{W}} < r\} = \phi(I)$$

for some smooth function $\phi : I \rightarrow \mathcal{W}$, $I \subset \mathbb{R}$ an open interval. Without loss of generality, we may assume $0 \in I$ and $\phi(0) = \overline{W}$.

Let $W = W(t; W_0)$ be the solution to the abstract Cauchy problem

$$\frac{dW}{dt} = F(W), \quad W(0) = W_0 \in \mathcal{D}. \quad (4.3)$$

By assumption, there holds $W(t; \phi(\delta)) = \phi(\delta)$ for any t .

The linearized problem at $\phi(\delta)$ is

$$\frac{dZ}{dt} = dF(\phi(\delta))Z, \quad Z(0) = Z_0 \in \mathcal{D}. \quad (4.4)$$

Differentiating with respect to δ the relation $F(\phi(\delta)) = 0$ for $\delta \in I$, we infer

$$dF(\phi(\delta)) \phi'(\delta) = 0,$$

showing that $0 \in \sigma(dF(\phi(\delta)))$ and that $r(\delta) := \phi'(\delta)$ is a right eigenvector of $dF(\phi(\delta))$. Let us denote by $\ell(\delta)$ the unique left eigenvector of $dF(\phi(\delta))$ such that $\ell(\delta) \cdot r(\delta) = 1$. Equivalently, $\ell(\delta)$ can be defined as the unique element in the kernel of the adjoint operator $dF(\phi(\delta))^*$ satisfying the normalization condition $\ell(\delta) \cdot r(\delta) = 1$. We also set for $\delta \in I$

$$P(\delta) := r(\delta) \otimes \ell(\delta), \quad Q(\delta) := I - P(\delta).$$

In particular, there hold

$$dF(\phi)P = P dF(\phi) = 0, \quad \text{and} \quad dF(\phi)Q = Q dF(\phi) = dF(\phi),$$

where the dependency on δ has been omitted for shortness.

We assume the following hypotheses.

H1. There exist $C, \theta > 0$ such that the solution $Z = Z(t; Z_0, \delta)$ to (4.4) is such that

$$|Q(\delta)Z(t; Z_0, \delta)| \leq C e^{-\theta t} |Q(\delta)Z_0| \quad (4.5)$$

for any $Z_0 \in \mathcal{D}$.

H2. The function ϕ is differentiable at $\delta = 0$ and there exist $C, \delta_0, \gamma > 0$ such that

$$|\phi(\delta) - \phi(0) - \phi'(0)\delta|_{\mathcal{W}} \leq C\delta^{1+\gamma}, \quad (4.6)$$

for $|\delta| < \delta_0$.

H3. There exist $C, M, \delta_0, \gamma > 0$ such that the function F is differentiable at $\phi(\delta)$ for any $\delta \in (-\delta_0, \delta_0)$ and

$$|F(\phi(\delta) + W) - F(\phi(\delta)) - dF(\phi(\delta))W|_{\mathcal{W}} \leq C|W|_{\mathcal{W}}^{1+\gamma}, \quad (4.7)$$

for $|\delta| < \delta_0$ and $|W|_{\mathcal{W}} \leq M$.

Theorem 4.6. *Assume that hypotheses **H1**, **H2** and **H3** hold. Then there exists $\varepsilon > 0$ such that for any $W_0 \in B_\varepsilon(\bar{W})$ there exists $\delta \in I$ for which the solution $W(t; W_0)$ to (4.3) satisfies*

$$|W(t; W_0) - \phi(\delta)|_{\mathcal{W}} \leq C|W_0 - \bar{W}|_{\mathcal{W}} e^{-\theta t} \quad (4.8)$$

for some $C, \theta > 0$

Proof. Given $W_0 \in \mathcal{W}$, let $w_0 \in \mathcal{W}$ be such that $W_0 = \bar{W} + \varepsilon w_0$ where $\varepsilon := |W_0 - \bar{W}|_{\mathcal{W}}$ and let the solution W to (4.3) be decomposed as

$$W = \phi(\varepsilon\eta) + \varepsilon w$$

with $\eta = \eta(\varepsilon)$ to be determined later, where the function w solves

$$\frac{dw}{dt} = dF(\phi(\varepsilon\eta))w + \varepsilon^\gamma R(\eta, w; \varepsilon), \quad w(0) = w_0 - \phi'(0)\eta - \varepsilon^\gamma \psi(\eta; \varepsilon) \quad (4.9)$$

where

$$\begin{aligned} R(\eta, w; \varepsilon) &:= \varepsilon^{-1-\gamma} \{F(\phi(\varepsilon\eta) + rw) - F(\phi(\varepsilon\eta)) - dF(\phi(\varepsilon\eta))rw\}, \\ \psi(\eta; \varepsilon) &:= \varepsilon^{-1-\gamma} \{\phi(\varepsilon\eta) - \phi(0) - \phi'(0)\varepsilon\eta\}. \end{aligned}$$

Decomposing w as

$$w = \alpha \phi'(\varepsilon\eta) + \omega, \quad \text{where} \quad \alpha := \ell(\varepsilon\eta) \cdot w, \quad \omega := Q(\varepsilon\eta)w,$$

and setting

$$S(\eta, \alpha, \omega; \varepsilon) := R(\eta, \alpha \phi'(\varepsilon\eta) + \omega; \varepsilon),$$

the unknowns α and ω solve

$$\begin{cases} \frac{d\alpha}{dt} = \varepsilon^\gamma \ell(\varepsilon\eta) \cdot S(\eta, \alpha, \omega; \varepsilon), \\ \frac{d\omega}{dt} = dF(\phi(\varepsilon\eta))\omega + \varepsilon^\gamma Q(\varepsilon\eta)S(\eta, \alpha, \omega; \varepsilon), \end{cases} \quad (4.10)$$

with initial conditions

$$\begin{cases} \alpha(0) = \ell(\varepsilon\eta) \cdot (w_0 - \phi'(0)\eta - \varepsilon^\gamma \psi(\eta; \varepsilon)), \\ \omega(0) = Q(\varepsilon\eta)(w_0 - \phi'(0)\eta - \varepsilon^\gamma \psi(\eta; \varepsilon)). \end{cases} \quad (4.11)$$

Therefore, the following relations hold

$$\begin{aligned} \alpha(t) &= \ell \cdot (w_0 - \phi'(0)\eta) - \varepsilon^\gamma \left\{ \ell \cdot \psi - \int_0^t \ell \cdot S \, d\tau \right\}, \\ \omega(t) &= e^{dF(\phi)t} Q(w_0 - \phi'(0)\eta) \\ &\quad - \varepsilon^\gamma \left\{ e^{dF(\phi)t} Q\psi - \int_0^t e^{dF(\phi)(t-\tau)} QS \, d\tau \right\}. \end{aligned} \quad (4.12)$$

where $\ell = \ell(\varepsilon\eta)$, $Q = Q(\varepsilon\eta)$, $\phi = \phi(\varepsilon\eta)$, $\psi = \psi(\eta; \varepsilon)$ and $S = S(\eta, \alpha, \omega; \varepsilon)$.

Next, we require the value $\eta = \eta(\varepsilon)$ to be such that $\alpha(+\infty) = 0$ that is

$$\ell \cdot (-w_0 + \phi'(0)\eta) + \varepsilon^\gamma \left\{ \ell \cdot \psi - \int_0^{+\infty} \ell \cdot S \, d\tau \right\} = 0.$$

Thus, the triple (η, α, ω) has to be such that

$$\mathcal{F}(\eta, \alpha, \omega; \varepsilon) + \varepsilon^\gamma \mathcal{G}(\eta, \alpha, \omega; \varepsilon) = 0 \quad (4.13)$$

where

$$\begin{aligned} \mathcal{F} &= \left(\ell \cdot (-w_0 + \phi'(0)\eta), \alpha, \omega - e^{dF(\phi)t} Q(w_0 - \phi'(0)\eta) \right) \\ \mathcal{G} &= \left(\ell \cdot \psi - \int_0^{+\infty} \ell \cdot S \, d\tau, \int_t^{+\infty} \ell \cdot S \, d\tau, e^{dF(\phi)t} Q\psi - \int_0^t e^{dF(\phi)(t-\tau)} QS \, d\tau \right). \end{aligned}$$

We want to show that, for small ε , the implicit relation (4.13) defines a function $\varepsilon \mapsto (\eta, \alpha, \omega)$. Prospecting the application the Implicit function

theorem in Banach spaces (among others, see [4]), let us introduce an appropriate functional setting. Given $\theta > 0$ and a Banach space \mathcal{Y} with norm $|\cdot|_{\mathcal{Y}}$, set

$$C_{\theta}^0(\mathbb{R}_+; \mathcal{Y}) := \left\{ f \in C^0(\mathbb{R}_+; \mathcal{Y}) : \sup_{t>0} e^{\theta t} |f(t)|_{\mathcal{Y}} < +\infty \right\}.$$

Then, let us consider the Banach space $\mathcal{X} = \mathbb{R} \times C_{\theta}^0(\mathbb{R}_+; \mathbb{R}) \times C_{\theta}^0(\mathbb{R}_+; \mathcal{W})$ with norm

$$\|(\eta, \alpha, \omega)\|_{\mathcal{X}} := |\eta| + \sup_{t>0} e^{\theta t} (|\alpha(t)| + |\omega(t)|_{\mathcal{W}}).$$

Choosing θ as in (4.5), for any $M > 0$, the function \mathcal{F} maps the set $\mathcal{X} \times (-\varepsilon, \varepsilon)$ into $\mathcal{X} \cap \{|\eta| \leq M\}$ for ε sufficiently small, since

$$e^{\theta t} |e^{dF(\phi)t} Q(w_0 - \phi'(0)\eta)|_{\mathcal{W}} \leq C |Q(w_0 - \phi'(0)\eta)|_{\mathcal{W}} < +\infty.$$

Moreover, as a consequence of the estimate

$$\begin{aligned} e^{\theta t} \int_t^{+\infty} |S(\eta, \alpha(\tau), \omega(\tau); r)|_{\mathcal{W}} d\tau &\leq C e^{\theta t} \int_t^{+\infty} |\alpha(\tau)\phi'(\varepsilon\eta) + \omega(\tau)|_{\mathcal{W}}^{1+\gamma} d\tau \\ &\leq C e^{\theta t} \int_t^{+\infty} e^{-(1+\gamma)\theta\tau} \left\{ e^{\theta\tau} (|\alpha(\tau)| + |\omega(\tau)|_{\mathcal{W}}) \right\}^{1+\gamma} d\tau \\ &\leq C e^{-\gamma\theta t} \|(0, \alpha, \omega)\|_{\mathcal{X}}^2, \end{aligned}$$

also the function $\varepsilon^{\gamma}\mathcal{G}$ maps $\mathcal{X} \times (-\varepsilon, \varepsilon)$ into $\mathcal{X} \cap \{|\eta| \leq M\}$ for any $M > 0$ and for ε sufficiently small. Moreover, the smoothness of the functions ℓ, Q, ψ, S with respect to their arguments guarantees that the map $\mathcal{F} + \varepsilon^{\gamma}\mathcal{G}$ is differentiable.

For $r = 0$, there holds $\mathcal{F}(\eta, \alpha, \omega; 0) = (\ell(0) \cdot w_0 - \eta, \alpha, \omega - Q(0)w_0)$, thus (4.13) is satisfied if and only if

$$\eta = \ell(0) \cdot w_0, \quad \alpha = 0, \quad \omega = Q(0)w_0.$$

In order to apply Implicit Function Theorem, it is sufficient to observe that

$$\frac{\partial(\mathcal{F} + \varepsilon^{\gamma}\mathcal{G})}{\partial(\eta, \alpha, \omega)} \Big|_{\varepsilon=0} = \frac{\partial\mathcal{F}}{\partial(\eta, \alpha, \omega)} \Big|_{\varepsilon=0} = \begin{pmatrix} 1 & 0 & 0 \\ 0 & I & 0 \\ 0 & 0 & I \end{pmatrix}$$

since

$$\frac{\partial}{\partial\eta} \ell(\varepsilon\eta) \Big|_{\varepsilon=0} = \frac{\partial}{\partial\eta} Q(\varepsilon\eta) \Big|_{\varepsilon=0} = 0.$$

Thus, in a neighborhood of $\varepsilon = 0$, there exist a smooth function Ξ with values in a neighborhood of $(\ell(0) \cdot w_0, 0, Q(0)w_0) \in \mathcal{X}$ such that

$$\mathcal{F} + \varepsilon\mathcal{G} = 0 \quad \text{if and only if} \quad (\eta, \alpha, \omega) = \Xi(r). \quad (4.14)$$

The function Ξ is locally bounded, $\|\Xi(r)\|_{\mathcal{X}} \leq C$ for ε small, and thus

$$|w(t)| = |\alpha(t)\phi'(\varepsilon\eta) + \omega(t)| \leq C e^{-\theta t}.$$

Recalling that $W = \phi(\varepsilon\eta) + \varepsilon w$, the decay estimate (4.8) follows. \square

With Theorem 4.6 at hand, we are able to provide the proof of Theorem 1.2. For the reader's convenience, let us briefly retrace the path toward nonlinear stability. The traveling wave (U, V) propagates with a specific speed c . Thus, considering a reference frame moving with such speed, we obtain the nonlinear system (3.4) for the perturbation variables, for which the Cauchy problem can be written as

$$\begin{aligned} \partial_t \begin{pmatrix} u \\ v \end{pmatrix} &= -\mathbf{B}^{-1} \left(\mathbf{A} \partial_x \begin{pmatrix} u \\ v \end{pmatrix} + \begin{pmatrix} f(U) - f(u+U) \\ v \end{pmatrix} \right), \\ \begin{pmatrix} u \\ v \end{pmatrix} (0) &= \begin{pmatrix} u_0 - U \\ v_0 - V \end{pmatrix} \end{aligned} \quad (4.15)$$

where \mathbf{A} and \mathbf{B} are defined in (3.7), and (u_0, v_0) is the (unperturbed) initial data of Theorem 1.2. Problem (4.15) corresponds to (4.3) in the general framework previously considered in Theorem 4.6. Therefore, we are able to make the following identifications:

1. the Hilbert space \mathcal{W} is $H^1(\mathbb{R}; \mathbb{R}^2)$; the steady state \bar{W} is $\bar{W} = 0$, and the function ϕ is defined by $\phi(\delta) := (U, V)(\cdot + \delta) - (U, V)(\cdot)$ with $\delta \in \mathbb{R}$; observe that for each $\delta \in \mathbb{R}$ fixed,

$$\begin{aligned} |\phi(\delta)|_{H^1}^2 &= \int_{\mathbb{R}} |(U, V)(\zeta + \delta) - (U, V)(\zeta)|^2 d\zeta + \int_{\mathbb{R}} |(U_x, V_x)(\zeta + \delta) - (U_x, V_x)(\zeta)|^2 d\zeta \\ &= \int_{\mathbb{R}} |(U_x, V_x)(\hat{\theta}\zeta)|^2 \delta^2 d\zeta + \int_{\mathbb{R}} |(U_{xx}, V_{xx})(\hat{\theta}\zeta)|^2 \delta^2 d\zeta \\ &\leq C_\delta |(U_x, V_x)|_{H^1}^2, \end{aligned}$$

for some $\hat{\theta} \in (0, \delta)$, showing that $\phi(\delta) \in \mathcal{W}$.

2. the linearized equation (corresponding to the one in (4.4)) is

$$\partial_t \begin{pmatrix} u \\ v \end{pmatrix} = -\mathbf{B}^{-1} \left(\mathbf{A} \partial_x + \mathbf{C}(x) \right) \begin{pmatrix} u \\ v \end{pmatrix};$$

3. the remainder, for which the estimate (4.7) has to be proved, is

$$\begin{pmatrix} u \\ v \end{pmatrix} \mapsto \begin{pmatrix} R(U; u) \\ 0 \end{pmatrix} := \begin{pmatrix} f(U+u) - f(U) - f'(U)u \\ 0 \end{pmatrix}.$$

Assuming $f \in C^3$, we next show that hypotheses **H2** and **H3** are verified for the function space $\mathcal{W} = H^1(\mathbb{R}; \mathbb{R}^2)$.

First we verify (4.6). Denoting by Φ the couple (U, V) , there holds

$$\begin{aligned} |\phi(\delta) - \phi(0) - \phi'(0)\delta|_{L^2}^2 &= \int_{\mathbb{R}} |\Phi(x + \delta) - \Phi(x) - \Phi_x(x)\delta|^2 dx \\ &= \delta^2 \int_{\mathbb{R}} \left| \int_0^1 (\Phi_x(x + \theta\delta) - \Phi_x(x)) d\theta \right|^2 dx \\ &\leq \delta^2 \int_{\mathbb{R}} \int_0^1 |\Phi_x(x + \theta\delta) - \Phi_x(x)|^2 d\theta dx \\ &\leq \delta^4 \int_{\mathbb{R}} \int_0^1 \int_0^1 |\Phi_{xx}|^2 d\eta d\theta dx, \end{aligned}$$

and thus

$$|\phi(\delta) - \phi(0) - \phi'(0)\delta|_{L^2} \leq \delta^2 |\Phi_{xx}|_{L^2}.$$

A similar estimate can be obtained by differentiating with respect to x , so that

$$|\phi(\delta) - \phi(0) - \phi'(0)\delta|_{H^1} \leq \delta^2 |\Phi_{xx}|_{H^1}.$$

To prove estimate (4.7), we first observe that

$$\begin{aligned} R(U; u) &= \left\{ \int_0^1 f''(U + \theta u)(1 - \theta) d\theta \right\} u^2; \\ \partial_x R(U; u) &= \left\{ \int_0^1 f'''(U + \theta u)\theta(1 - \theta) d\theta \right\} u^2 \partial_x u \\ &\quad + 2 \left\{ \int_0^1 f''(U + \theta u)(1 - \theta) d\theta \right\} u \partial_x u. \end{aligned}$$

Thus, for $u \in H^1(\mathbb{R})$, taking into account the embedding $H^1(\mathbb{R}) \subset L^\infty(\mathbb{R})$, there holds

$$|R(U; u)|_{L^2} \leq C |u|_{L^2}^2, \quad |\partial_x R(U; u)|_{L^2} \leq C |u|_{H^1}^2,$$

where the constant C depends on f, U and the L^∞ -norm of u , so that, in particular, estimate (4.7) holds with $\gamma = 1$.

Finally, thanks to Theorem 4.5, also hypothesis **H1** is verified, so that Theorem 4.6 applies and Theorem 1.2 follows.

5. NUMERICAL EXPERIMENTS

In this Section, we present some numerical experiment on system (1.5), based on the observation that it can be rewritten as the weakly coupled semilinear hyperbolic system (a reactive version of the Goldstein–Kac model for correlated random walk):

$$\begin{cases} \partial_t u_- - \lambda \partial_x u_- = \frac{1}{2} \tau^{-1} (-u_- + u_+) + \frac{1}{2} f(u_+ + u_-), \\ \partial_t u_+ + \lambda \partial_x u_+ = \frac{1}{2} \tau^{-1} (u_- - u_+) + \frac{1}{2} f(u_+ + u_-), \end{cases} \quad (5.1)$$

where the coefficient λ and the unknowns u_\pm are given by

$$\lambda := 1/\sqrt{\tau}, \quad u_- := \frac{1}{2} (u + \lambda^{-1}v), \quad u_+ := \frac{1}{2} (u - \lambda^{-1}v).$$

Inverting the equality, we infer the relations $u = u_+ + u_-$ and $v = \lambda(u_- - u_+)$.

Fixed the mesh size $dx > 0$, we discretize the space by approximating the first order space derivatives in an upwind fashion. Thus, setting $r_j \approx u_-(j \, dx, t)$ and $s_j \approx u_+(j \, dx, t)$, we obtain

$$\begin{cases} \frac{dr_j}{dt} = \frac{\lambda}{dx} (r_{j+1} - r_j) + \frac{1}{2\tau} (-r_j + s_j) + \frac{1}{2} f(r_j + s_j), \\ \frac{ds_j}{dt} = -\frac{\lambda}{dx} (s_j - s_{j-1}) + \frac{1}{2\tau} (r_j - s_j) + \frac{1}{2} f(r_j + s_j). \end{cases} \quad (5.2)$$

Let us stress that, setting $u_j := r_j + s_j$ and $v_j := \lambda(r_j - s_j)$, we infer a semi-discrete version of (1.5)

$$\begin{cases} \frac{du_j}{dt} = \frac{1}{2} \lambda dx \frac{u_{j+1} - 2u_j + u_{j-1}}{dx^2} + \frac{v_{j+1} - v_{j-1}}{2dx} + f(u_j), \\ \frac{dv_j}{dt} = \frac{1}{2} \lambda dx \frac{v_{j+1} - 2v_j + v_{j-1}}{dx^2} + \frac{1}{\tau} \left(\frac{u_{j+1} - u_{j-1}}{2dx} - v_j \right), \end{cases}$$

which formally corresponds to

$$\begin{cases} u_t - v_x = \nu u_{xx} u + f(u), \\ \tau v_t - u_x = \tau \nu v_{xx} - v, \end{cases} \quad \text{where } \nu := \frac{1}{2} \lambda dx,$$

so that we expect the appearance of a numerical viscosity with strength measured by the parameter λ .

Next, fixed the time step $dt > 0$, we discretize the time derivative in (5.2) by means of an implicit-explicit approach, leaded by a simplicity criterion suggesting to discretize implicitly only the linear terms

$$\begin{cases} \frac{r_j^{n+1} - r_j^n}{dt} = \frac{\lambda}{dx} (r_{j+1}^{n+1} - r_j^{n+1}) + \frac{1}{2\tau} (-r_j^{n+1} + s_j^{n+1}) + \frac{1}{2} f(r_j^n + s_j^n), \\ \frac{s_j^{n+1} - s_j^n}{dt} = -\frac{\lambda}{dx} (s_j^{n+1} - s_{j-1}^{n+1}) + \frac{1}{2\tau} (r_j^{n+1} - s_j^{n+1}) + \frac{1}{2} f(r_j^n + s_j^n). \end{cases}$$

Fully implicit schemes have been tested with no significant advantage in the approximation, but with a significant increase of the computational time.

Setting

$$\alpha = \lambda \frac{dt}{dx}, \quad \beta = \frac{dt}{2\tau}, \quad f_j^n = f(r_j^n + s_j^n),$$

and with an upwind discretization of the space derivatives, we end up with

$$\begin{pmatrix} (1 + \beta) \mathbb{I} - \alpha \mathbb{D}_+ & -\beta \mathbb{I} \\ -\beta \mathbb{I} & (1 + \beta) \mathbb{I} + \alpha \mathbb{D}_- \end{pmatrix} \begin{pmatrix} r^{n+1} \\ s^{n+1} \end{pmatrix} = \begin{pmatrix} r^n + f^n dt/2 \\ s^n + f^n dt/2 \end{pmatrix} \quad (5.3)$$

where the matrices $\mathbb{I}, \mathbb{D}_\pm$ are given by

$$\mathbb{I} = (\delta_{i,j}), \quad \mathbb{D}_+ = (\delta_{i+1,j} - \delta_{i,j}), \quad \mathbb{D}_- = (\delta_{i,j} - \delta_{i,j+1})$$

(here $\delta_{i,j}$ is the standard Kronecker symbol). The block-matrix in (5.3) is invertible, since its spectrum is contained in the complex half plane $\{\lambda \in \mathbb{C} : \text{Re } \lambda \geq 1\}$ as a consequence of the Geršgorin criterion.

A direct manipulation of (5.3) gives

$$\begin{aligned} r^{n+1} &= (\mathbb{S} - \alpha^2 \mathbb{D}_- \mathbb{D}_+)^{-1} \left\{ [(1 + \beta)\mathbb{I} + \alpha \mathbb{D}_-] r^n + \beta s^n \right. \\ &\quad \left. + \frac{1}{2} [(1 + 2\beta)\mathbb{I} + \alpha \mathbb{D}_-] f^n dt \right\} \\ s^{n+1} &= (\mathbb{S} - \alpha^2 \mathbb{D}_+ \mathbb{D}_-)^{-1} \left\{ \beta r^n + [(1 + \beta)\mathbb{I} - \alpha \mathbb{D}_+] s^n \right. \\ &\quad \left. + \frac{1}{2} [(1 + 2\beta)\mathbb{I} - \alpha \mathbb{D}_+] f^n dt \right\} \end{aligned} \quad (5.4)$$

where \mathbb{S} is the symmetric matrix

$$\mathbb{S} := (1 + 2\beta)\mathbb{I} + \alpha(1 + \beta)(\mathbb{D}_- - \mathbb{D}_+)$$

To start with, we test the algorithm by analyzing its capability to recover the correct wave speeds c_* of the front connecting the stable states 0 and 1. Following [31], we introduce an *average speed* of the numerical solution at time t^n defined by

$$c^n = \frac{1}{dt} \mathbf{1} \cdot (u^n - u^{n+1}) = \frac{1}{dt} \sum_j (u_j^n - u_j^{n+1}) \quad (5.5)$$

where $\mathbf{1} = (1, \dots, 1)$. Indeed, for any differentiable function ϕ with asymptotic states ϕ_{\pm} and derivative integrable in \mathbb{R} , and for $h \in \mathbb{R}$, there holds

$$\begin{aligned} \int_{\mathbb{R}} (\phi(x+h) - \phi(x)) dx &= h \int_{\mathbb{R}} \int_0^1 \frac{d\phi}{dx}(x+\theta h) d\theta dx \\ &= h \int_0^1 \int_{\mathbb{R}} \frac{d\phi}{dx}(x+\theta h) dx d\theta = h[\phi] \end{aligned}$$

where $[\phi] := \phi(+\infty) - \phi(-\infty)$, so that for $h = -c dt$, we infer

$$c = \frac{1}{[\phi] dt} \int_{\mathbb{R}} (\phi(x) - \phi(x - c dt)) dx.$$

As a test case, we consider the usual cubic function $f(u) = u(u - \alpha)(1 - u)$ with $\alpha \in (0, 1)$. Our aim is to compare the values for the propagation speed c_* as obtained by means of the shooting argument (see Section 2) and the one given by calculating (5.5) for the solution to the initial-value problem with an increasing datum connecting 0 and 1 and computing c^n at a time t so large that stabilization of the speed of propagation of the numerical solution is reached.

To start with, we test three different choices for the couple (τ, α) for different values of dx and dt , where the range of variation of τ has been chosen so that the condition $\tau f'(u) < 1$ is satisfied for all the values of the unstable zero α .

From Table 2, we note that the smallness of the space mesh dx is more relevant than the corresponding time-step value dt .

Requiring to detect the correct speed value with an error that is always less than 5% of the effective value, we heuristically determine the choice $dx = 2^{-3}$ and $dt = 10^{-2}$, that will be used for subsequent numerical experiments. For

TABLE 2. Riemann problem with jump at $\ell/2$, $\ell = 25$. Relative error for three different cases (T final time): A. $\tau = 1$, $\alpha = 0.9$, $c_* = 0.5646$, $T = 40$; B. $\tau = 2$, $\alpha = 0.6$, $c_* = 0.1737$, $T = 30$; C. $\tau = 4$, $\alpha = 0.7$, $c_* = 0.3682$, $T = 35$.

	dx	2^0	2^{-1}	2^{-2}	2^{-3}	2^{-4}
$dt = 10^{-1}$	A	0.1664	0.0787	0.0325	0.0091	0.0018
	B	0.0383	0.0306	0.0241	0.0198	0.0175
	C	0.1527	0.1144	0.0818	0.0581	0.0442
$dt = 10^{-2}$	A	0.1751	0.0876	0.0417	0.0186	0.0079
	B	0.0275	0.0196	0.0128	0.0084	0.0061
	C	0.1420	0.1018	0.0684	0.0457	0.0339
$dt = 10^{-3}$	A	0.1760	0.0885	0.0427	0.0196	0.0089
	B	0.0265	0.0184	0.0117	0.0072	0.0049
	C	0.1411	0.1006	0.0670	0.0441	0.0321

TABLE 3. Final average speed (5.5) and relative error with respect to c_* given in Sect.2 ($N = 400$, $dx = 0.125$, $dt = 0.01$, $\ell = 25$, $T = 40$).

	$\alpha = 0.6$	$\alpha = 0.7$	$\alpha = 0.8$	$\alpha = 0.9$
$\tau = 1$	0.1580	0.3096	0.4497	0.5751
	0.0101	0.0118	0.0145	0.0186
$\tau = 4$	0.2102	0.3533	0.4337	0.4825
	0.0396	0.0404	0.0365	0.0118

TABLE 4. Second order in space. Final average speed (5.5) and relative error with respect to c_* given in Sect.2 ($N = 400$, $dx = 0.125$, $dt = 0.01$, $\ell = 25$, $T = 40$).

	$\alpha = 0.6$	$\alpha = 0.7$	$\alpha = 0.8$	$\alpha = 0.9$
$\tau = 1$	0.1560	0.3052	0.4421	0.5630
	0.0025	0.0025	0.0026	0.0029
$\tau = 4$	0.2184	0.3672	0.4485	0.4885
	0.0022	0.0025	0.0034	0.0004

such a choice, we record the results in Table 3 for different choices of α and $\tau = 1$ and $\tau = 4$ together with the corresponding relative error.

Considering different form for matrices \mathbb{D}_\pm giving a second order approximation of the derivatives, such as

$$\mathbb{D}_+ = \left(-\frac{1}{2}\delta_{i+2,j} + 2\delta_{i+1,j} - \frac{3}{2}\delta_{i,j}\right), \quad \mathbb{D}_- = \left(\frac{3}{2}\delta_{i,j} - 2\delta_{i,j+1} + \frac{1}{2}\delta_{i,j+2}\right),$$

the speed approximation gain in accuracy, as reported in Table 4, that shows an increase of one order.

In what follows, we keep considering the previously discussed first order discretization, since we are interested in considering initial data with sharp transitions (as in the case of Riemann problems). In such a case, higher order approximations of the derivatives introduce spurious oscillations that, even being transient, may leads to catastrophic consequences because of the bistable nature of the reaction term.

As a consequence of its capability of correct computations of propagation speeds, we consider the scheme (5.4) to be a reliable tools for determining numerically the behavior of the solutions to (1.5) and we use it to show that the actual domain of attraction of the front is much larger than guaranteed by the nonlinear stability in Theorem 1.2.

5.1. Riemann problem. The rigorous result proved in the previous sections guarantees that small perturbations to the propagating front are dissipated, with exponential rate, by the equation. Inspired by the many available results for the parabolic Allen–Cahn equation (starting from the landmark article [13]), we expect that the front possesses a very large domain of attraction and, specifically, that any bounded initial data u_0 such that

$$\limsup_{x \rightarrow -\infty} u_0(x) < \alpha < \liminf_{x \rightarrow +\infty} u_0(x) \quad (5.6)$$

gives raise to a solution that is asymptotically convergent to a member of the traveling fronts connecting $u = 0$ with $u = 1$.

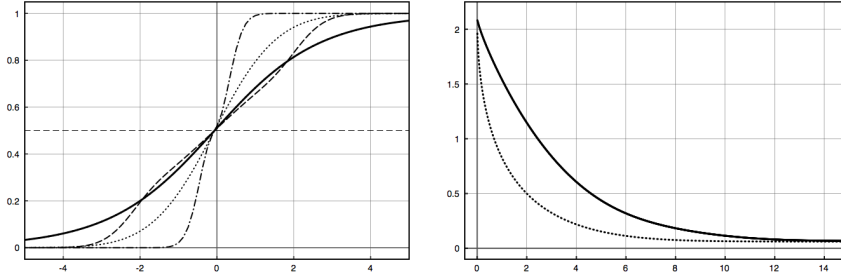


FIGURE 7. Riemann problem with initial datum $\chi_{(0,\ell)}$ in $(-\ell, \ell)$, $\ell = 25$. Left: solution profiles zoomed in the interval $(-5, 5)$ at time $t = 1$ (dash-dot), $t = 5$ (dash), $t = 15$ (continuous), for comparison, solution to the parabolic Allen–Cahn equation at time $t = 1$ (dot). Right: Decay of the L^2 distance to the exact equilibrium solution for the hyperbolic (continuous) and parabolic (dot) Allen–Cahn equations.

To support such conjecture, we perform some numerical experiments choosing the parameters values

$$\tau = 4, \quad \ell = 25, \quad dx = 0.125, \quad dt = 0.01.$$

Moreover, we consider the case $\alpha = 1/2$ motivated by the fact that, in such a special case, the profile of the traveling front for the hyperbolic Allen–Cahn equation is stationary and it coincides with the one of the corresponding original parabolic equation, explicitly given by

$$U(x) = \frac{1}{1 + e^{-x/\sqrt{2}}}, \quad V(x) = \frac{dU}{dx} = \frac{1}{\sqrt{2}} \frac{1}{e^{x/\sqrt{2}} + 2 + e^{-x/\sqrt{2}}}$$

when normalized by the condition $U(0) = 1/2$.

Numerical simulations confirm the decay of the solution to the equilibrium profile (see Figure 7, left). When compared with the standard Allen–Cahn equation, it appears evident that the dissipation mechanism of the hyperbolic equation is weaker with respect to the parabolic case (see Figure 7, right).

5.2. Randomly perturbed initial data. Next, keeping all of the previous parameters fixed, we consider initial data that resemble very roughly the transition from 0 to 1. Namely, we divide the interval $(-\ell, \ell)$ into three parts and we choose a random value in each of these sub-intervals coherently with the requirement (5.6). Precisely, we choose $u_0(x)$ to be a different random value in $(0, 0.5)$ for each $x \in (-\ell, -\ell/3)$, in $(0, 1)$ for each $x \in (-\ell/3, \ell/3)$ and in $(0.5, 1)$ for each $x \in (\ell/3, \ell)$.

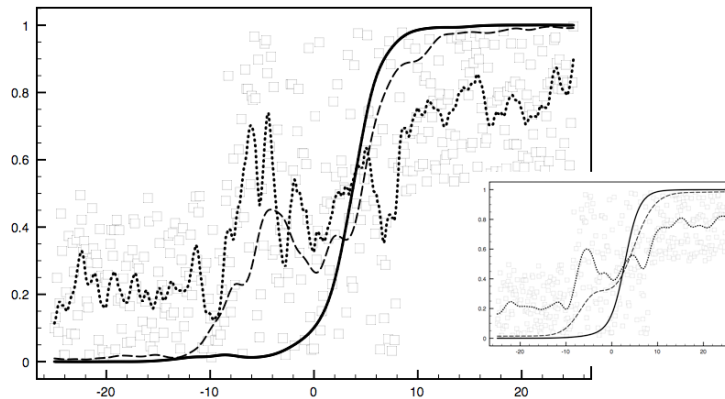


FIGURE 8. Random initial datum in $(-\ell, \ell)$, $\ell = 25$ (squares). Solution profiles for the hyperbolic Allen–Cahn equation with relaxation at time $t = 0.5$ (dot), $t = 7.5$ (dash), $t = 15$ (continuous). For comparison, in the small window, the solution to the parabolic Allen–Cahn equation.

The results for both hyperbolic and parabolic Allen–Cahn equation with the same initial datum are illustrated in Fig.8. Convergence to the equilibrium configuration is manifest. It is also worthwhile to note that different level of smoothing produced by the presence/absence of the relaxation parameter τ , measuring the “hyperbolicity” of the model.

The transition is even much more robust than what the previous computation shows. With an initial datum $u_0(x)$ given by a random value in $(0, 0.9)$ for each $x \in (-\ell, -\ell/3)$, in $(0, 1)$ for each $x \in (-\ell/3, \ell/3)$ and in $(0.1, 1)$ for each $x \in (\ell/3, \ell)$, we still observe the appearance and formation of the front, as shown in Figure 1.

REFERENCES

- [1] H. A. Abdusalam, Analytic and approximate solutions for Nagumo telegraph reaction diffusion equation. *Appl. Math. Comput.* **157** (2004) no. 2, 515–522.
- [2] J. Alexander, R. A. Gardner and C. K. R. T. Jones, A topological invariant arising in the stability analysis of travelling waves, *J. Reine Angew. Math.* **410** (1990), 167–212.
- [3] S. M. Allen and J. W. Cahn, A microscopic theory for antiphase boundary motion and its application to antiphase domain coarsening. *Acta Metallurgica* **27** (1979) no. 6, 1085–1095.
- [4] A. Ambrosetti and G. Prodi, *A primer of nonlinear analysis*. Corrected reprint of the 1993 original. Cambridge Studies in Advanced Mathematics, 34. Cambridge University Press, Cambridge, 1995.
- [5] C. Cattaneo, Sulla conduzione del calore. *Atti Sem. Mat. Fis. Univ. Modena* **3** (1949) 83–101.
- [6] N. Chafee and E. F. Infante, A bifurcation problem for a nonlinear partial differential equation of parabolic type. *Applicable Analysis* **4** (1974) no. 1, 17–37.
- [7] W. A. Coppel, *Dichotomies in Stability Theory*, vol. 629 of Lecture Notes in Mathematics, Springer-Verlag, New York, 1978.
- [8] D. Cramer and Y. Latushkin, Gearhart-Prüss theorem in stability for wave equations: a survey, in G. Goldstein, R. Nagel, and S. Romanelli (eds.), *Evolution equations*, vol. 234 of Lecture Notes in Pure and Appl. Math., Dekker, New York, 2003, 105–119.
- [9] D. E. Edmunds and W. D. Evans, *Spectral Theory and Differential Operators*, Oxford Mathematical Monographs, Clarendon Press, Oxford, 1987.
- [10] K. J. Engel and R. Nagel, *One-parameter semigroups for linear evolution equations*, vol. 194 of Graduate Texts in Mathematics, Springer-Verlag, New York, 2000.
- [11] H. Engler, Relations between travelling wave solutions of quasilinear parabolic equations. *Proc. Amer. Math. Soc.* **93** (1985) no. 2, 297–302.
- [12] E. S. Fahmy, An analytical study of telegraph reaction diffusion equation. *Int. J. Comput. Appl. Math.* **2** (2007) no. 2, 149–162.
- [13] P. C. Fife and J. B. McLeod, The approach of solutions of nonlinear diffusion equations to travelling front solutions. *Arch. Ration. Mech. Anal.* **65** (1977) no. 4, 335–361.
- [14] T. Gallay and R. Joly, Global stability of travelling fronts for a damped wave equation with bistable nonlinearity. *Ann. Sci. Éc. Norm. Supér. (4)* **42** (2009) no. 1, 103–140.
- [15] R. A. Gardner and K. Zumbrun, The gap lemma and geometric criteria for instability of viscous shock profiles. *Comm. Pure Appl. Math.* **51** (1998), no. 7, 797–855.
- [16] L. Gearhart, Spectral theory for contraction semigroups on Hilbert space, *Trans. Amer. Math. Soc.* **236** (1978), 385–394.
- [17] B. H. Gilding and R. Kersner, Wavefront solutions of a nonlinear telegraph equation. *J. Differential Equations* **254** (2013) no. 2, 599–636.
- [18] K. P. Hadeler, Hyperbolic travelling fronts. *Proc. Edinburgh Math. Soc. (2)* **31** (1988) no. 1, 89–97.
- [19] K. P. Hadeler, Travelling fronts for correlated random walks. *Canad. Appl. Math. Quart.* **2** (1994) no. 1, 27–43.
- [20] K. P. Hadeler, Reaction transport systems in biological modelling, in Capasso, V. and Diekmann, O. (eds.), *Mathematics inspired by biology (Martina Franca, 1997)*, Lecture Notes in Math. vol. 1714, Springer-Verlag Berlin, 1999.

- [21] K. P. Hadeler and J. Müller, Dynamical systems of population dynamics, in B. Fiedler (ed.), *Ergodic theory, analysis, and efficient simulation of dynamical systems*, Springer-Verlag, Berlin, 2001.
- [22] D. Henry, Geometric Theory of Semilinear Parabolic Equations, vol. 840 of Lecture Notes in Mathematics, Springer-Verlag, New York, 1981.
- [23] T. Hillen, Invariance principles for hyperbolic random walk systems. *J. Math. Anal. Appl.* **210** (1997) no. 1, 360–374.
- [24] E. E. Holmes, Are diffusion models too simple? Comparisons with a telegraph model of dispersal. *American Naturalist* **142** (1993) no. 5, 779–796.
- [25] G. Izús, R. Deza, O. Ramírez, H.S. Wio, D. H. Zanette and C. Borzi, Global stability of stationary patterns in bistable reaction-diffusion systems. *Phys. Rev. E* (3) **52** (1995) no. 1, part A, 129–136.
- [26] D. D. Joseph and L. Preziosi, Heat waves. *Rev. Modern Phys.* **61** (1989) no. 1, 41–73.
- [27] D. D. Joseph and L. Preziosi, Addendum to the paper: “Heat waves” [Rev. Modern Phys. 61 (1989) no. 1, 41–73]. *Rev. Modern Phys.* **62** (1990) no. 2, 375–391.
- [28] M. Kac, A stochastic model related to the telegrapher’s equation, *Rocky Mountain J. Math.* **4** (1974), 497–509.
- [29] T. Kapitula and K. Promislow, *Spectral and dynamical stability of nonlinear waves*, vol. 185 in Applied Mathematical Sciences, Springer-Verlag, New York, 2013.
- [30] T. Kato, *Perturbation Theory for Linear Operators*, Classics in Mathematics, Springer-Verlag, New York, Second ed., 1980.
- [31] R. J. LeVeque and H. C. Yee, A study of numerical methods for hyperbolic conservation laws with stiff source terms. *J. Comput. Phys.* **86** (1990) no. 1, 187–210.
- [32] H. M. Lieberstein, On the Hodgkin–Huxley partial differential equation, *Math. Biosci.* **1** (1967) no.1, 45–69.
- [33] C. Mascia and K. Zumbrun, Pointwise Green’s function bounds and stability of relaxation shocks. *Indiana Univ. Math. J.* **51** (2002) no. 4, 773–904.
- [34] J. C. Maxwell, On the dynamical theory of gases. *Trans. Royal Soc. London* **157** (1867), 49–88.
- [35] H. P. McKean Jr., Nagumo’s equation. *Advances in Math.* **4** (1970) 209–223.
- [36] I. Melbourne and G. Schneider, Phase dynamics in the real Ginzburg-Landau equation, *Math. Nachr.* **263/264** (2004), 171–180.
- [37] V. Méndez, J. Fort and J. Farjas, Speed of wave-front solutions to hyperbolic reaction-diffusion equations. *Phys. Review E* **60** no.5 (1999), 5231–5243.
- [38] A. S. Mikhailov, *Foundations of synergetics. I. Distributed active systems*. Second edition. Springer Series in Synergetics, 51. Springer-Verlag, Berlin, 1994.
- [39] M. Möller and A. Zettl, Differentiable dependence of eigenvalues of operators in Banach spaces. *J. Operator Theory* **36** (1996), no. 2, 335–355.
- [40] J. D. Murray, *Mathematical biology. I. An introduction*. Third edition. Interdisciplinary Applied Mathematics, 17. Springer-Verlag, New York, 2002.
- [41] J. Nagumo, S. Arimoto and S. Yoshizawa, An active pulse transmission line simulating nerve axon. *Proc. IRE* **50** (1962), no. 10, 2061–2070.
- [42] K. J. Palmer, Exponential dichotomies and transversal homoclinic points, *J. Differential Equations* **55** (1984), no.2, 225–256.
- [43] K. J. Palmer, Exponential dichotomies and Fredholm operators, *Proc. Amer. Math. Soc.* **104** (1988), no. 1, 149–156.
- [44] A. Pazy, *Semigroups of Linear Operators and Applications to Partial Differential Equations*, Springer-Verlag, New York, 1983.
- [45] L. Perko, Rotated vector fields, *J. Differential Equations* **103** (1993) no. 1, 127–145.
- [46] R. G. Plaza and K. Zumbrun, An Evans function approach to spectral stability of small-amplitude shock profiles. *Discr. and Cont. Dynam. Syst.* **10** (2004) no. 4, 885–924.

- [47] J. Prüss, On the spectrum of C_0 -semigroups, *Trans. Amer. Math. Soc.* **284** (1984), no. 2, 847–857.
- [48] J. Rottmann-Matthes, Linear stability of traveling waves in first-order hyperbolic PDEs, *J. Dynam. Differential Equations* **23** (2011) no. 2, 365–393.
- [49] J. Rottmann-Matthes, Stability and freezing of nonlinear waves in first order hyperbolic PDEs, *J. Dynam. Differential Equations* **24** (2012) no. 2, 341–367.
- [50] B. Sandstede, Stability of travelling waves, in B. Fiedler (ed.), *Handbook of dynamical systems, Vol. 2*, North-Holland, Amsterdam, 2002, 983–1055.
- [51] D. H. Sattinger, On the stability of waves of nonlinear parabolic systems. *Advances in Math.* **22** (1976) no. 3, 312–355.
- [52] R. A. van Gorder and K. Vajravelu, Analytical and numerical solutions of the density dependent Nagumo telegraph equation. *Nonlinear Anal. Real World Appl.* **11** (2010) no. 5, 3923–3929.

(Corrado Lattanzio) DIPARTIMENTO DI INGEGNERIA E SCIENZE DELL'INFORMAZIONE E MATEMATICA, UNIVERSITÀ DEGLI STUDI DELL'AQUILA (ITALY)

E-mail address: `corrado@univaq.it`

(Corrado Mascia) DIPARTIMENTO DI MATEMATICA, SAPIENZA UNIVERSITÀ DI ROMA (ITALY)

E-mail address: `mascia@mat.uniroma1.it`

(Ramón G. Plaza) DEPARTAMENTO DE MATEMÁTICAS Y MECÁNICA, IIMAS, UNIVERSIDAD NACIONAL AUTÓNOMA DE MÉXICO (MEXICO)

E-mail address: `plaza@mym.iimas.unam.mx`

(Chiara Simeoni) LABORATOIRE DE MATHÉMATIQUES J.A. DIEUDONNÉ, UNIVERSITÉ NICE SOPHIA-ANTIPOLIS (FRANCE)

E-mail address: `simeoni@unice.fr`