



Prognostic factors of lung cancer in lymphoma survivors (the LuCiLyS study)

Alfonso Fiorelli¹, Antonio D'Andrilli², Annalisa Carlucci¹, Giovanni Vicidomini¹, Domenico Loizzi³, Nicoletta Pia Ardò³, Rita Daniela Marasco³, Luigi Ventura⁴, Luca Ampollini⁴, Paolo Carbognani⁴, Giovanni Bocchialini⁴, Filippo Lococo⁵, Massimiliano Paci⁶, Teresa Severina Di Stefano⁶, Francesco Ardissoni⁷, Matteo Gagliasso⁷, Paolo Mendogni⁸, Lorenzo Rosso⁸, Alessandra Mazzucco⁸, Camilla Vanni², Beatrice Trabalza Marinucci², Rossella Potenza⁹, Alberto Matricardi⁹, Mark Ragusa¹⁰, Valentina Tassi¹⁰, Marco Anile¹¹, Camilla Poggi¹¹, Nicola Serra¹², Antonello Sica¹³, Mario Nosotti⁸, Francesco Sollitto³, Federico Venuta¹¹, Erino Angelo Rendina², Francesco Puma⁹, Mario Santini¹; The LuCiLyS study group

¹Translational Medical and Surgical Science, University of Campania Luigi Vanvitelli, Naples, Italy; ²Thoracic Surgery, Università La Sapienza, Sant'Andrea Hospital, Rome, Italy; ³Thoracic Surgery, Università di Foggia, Foggia, Italy; ⁴Medicine and Surgery, Thoracic Surgery, University Hospital of Parma, Parma, Italy; ⁵Department of General Thoracic Surgery, Fondazione Policlinico Universitario "Agostino Gemelli" IRCCS, Università Cattolica del Sacro Cuore, Rome, Italy; ⁶Unit of Thoracic Surgery, Azienda Unità Sanitaria Locale-IRCCS di Reggio Emilia, Reggio Emilia, Italy; ⁷Department of Oncology, Thoracic Surgery Unit, University of Torino, San Luigi Hospital, Orbassano, Italy; ⁸Thoracic Surgery and Lung Transplant Unit, Fondazione IRCCS Ca'Granda Ospedale Maggiore Policlinico, Milan, Italy; ⁹Thoracic Surgery, Università di Perugia, Perugia, Italy; ¹⁰Thoracic Surgery Unit, S. Maria Hospital at Terni, Perugia University Medical School, Terni, Italy; ¹¹Unit of Thoracic Surgery, Policlinico Umberto I, University of Rome La Sapienza, Rome, Italy; ¹²Statistic Unit, Department of Public Health, University of Federico II, Naples, Italy; ¹³Department of Precision Medicine, University of Campania Luigi Vanvitelli, Naples, Italy

Contributions: (I) Conception and design: M Santini, A Fiorelli, F Ardissoni, M Nosotti, F Puma, M Ragusa, EA Rendina, F Sollitto, F Venuta; (II) Administrative support: A Carlucci; (III) Provision of study materials or patients: G Vicidomini, D Loizzi, NP Ardò, RD Marasco, L Ventura, L Ampollini, P Carbognani, G Bocchialini, F Lococo, M Paci, TS Di Stefano; (IV) Collection and assembly of data: M Gagliasso, P Mendogni, L Rosso, A Mazzucco, C Vanni, BT Marinucci, R Potenza, A Matricardi, V Tassi, M Anile, C Poggi, A Sica; (V) Data analysis and interpretation: N Serra; (VI) Manuscript writing: All authors; (VII) Final approval of manuscript: All authors.

Correspondence to: Alfonso Fiorelli, MD, PhD. Thoracic Surgery Unit, Università degli Studi della Campania "Luigi Vanvitelli", Piazza Miraglia, 2, I-80138 Naples, Italy. Email: alfonso.fiorelli@unicampania.it.

Background: Second cancer is the leading cause of death in lymphoma survivors, with lung cancer representing the most common solid tumor. Limited information exists about the treatment and prognosis of second lung cancer following lymphoma. Herein, we evaluated the outcome and prognostic factors of Lung Cancer in Lymphoma Survivors (the LuCiLyS study) to improve the patient selection for lung cancer treatment.

Methods: This is a retrospective multicentre study including consecutive patients treated for lymphoma disease that subsequently developed non-small cell lung cancer (NSCLC). Data regarding lymphoma including age, symptoms, histology, disease stage, treatment received and lymphoma status at the time of lung cancer diagnosis, and data on lung carcinoma as age, smoking history, latency from lymphoma, symptoms, histology, disease stage, treatment received, and survival were evaluated to identify the significant prognostic factors for overall survival.

Results: Our study population included 164 patients, 145 of which underwent lung cancer resection. The median overall survival was 63 (range, 58–85) months, and the 5-year survival rate 54%. At univariable analysis no-active lymphoma (HR: 2.19; P=0.0152); early lymphoma stage (HR: 1.95; P=0.01); adenocarcinoma histology (HR: 0.59; P=0.0421); early lung cancer stage (HR: 3.18; P<0.0001); incidental diagnosis of lung cancer (HR: 1.71; P<0.0001); and lung cancer resection (HR: 2.79; P<0.0001) were favorable prognostic factors. At multivariable analysis, no-active lymphoma (HR: 2.68; P=0.004); early lung cancer stage

(HR: 2.37; $P < 0.0001$); incidental diagnosis of lung cancer (HR: 2.00; $P < 0.0001$); and lung cancer resection (HR: 2.07; $P < 0.0001$) remained favorable prognostic factors. Patients with non-active lymphoma ($n=146$) versus those with active lymphoma ($n=18$) at lung cancer diagnosis presented better median survival (64 *vs.* 37 months; HR: 2.4; $P=0.02$), but median lung cancer specific survival showed no significant difference (27 *vs.* 19 months; HR: 0.3; $P=0.17$).

Conclusions: The presence and/or a history of lymphoma should not be a contraindication to resection of lung cancer. Inclusion of lymphoma survivors in a lung cancer-screening program may lead to early detection of lung cancer, and improve the survival.

Keywords: Lymphoma; second primary tumor; lung cancer

Submitted Sep 13, 2019. Accepted for publication Oct 21, 2019.

doi: 10.21037/tlcr.2019.12.28

View this article at: <http://dx.doi.org/10.21037/tlcr.2019.12.28>

Introduction

Developments in modern chemotherapy and radiotherapy have increased the survival rate of lymphoma patients. The cure rate for patients with early stage Hodgkin lymphoma (HL) is generally $\geq 90\%$, and the 5-year survival rate (5-YSR) for patients with non-HL ranges from 26% to 73%, depending on the stage and the aggressiveness of the disease (1). However, lymphoma survivors develop second primary malignancies with a higher rate than people of the same age, and sex in the general population (2). Established risk factors for lung cancer include radiotherapy, and alkylating-agent chemotherapy as well as smoking (3,4). During prolonged follow-up after initial treatment of lymphoma, the mortality of lung cancer overcomes that of lymphoma, and it represents the main cause of death in lymphoma survivors (5). Nevertheless, only few studies (1,6-8) have evaluated the outcome of lymphoma survivors who developed lung cancer as second primary malignancy. Thus, it is still unclear whether standard treatment options for lung cancer are limited or not by lymphoma.

In this study, we evaluated the outcome and prognostic factors of Lung Cancer in Lymphoma Survivors (the LuCiLyS study) in order to improve the patient selection for lung cancer treatment.

Methods

Study design

This is a retrospective multicenter study. Consecutive patients who developed non-small cell lung cancer (NSCLC) as second primary cancer after lymphoma

diagnosis, were identified from data base or medical records of each participating institution. A minimum latency of 2 months between lymphoma and diagnosis of NSCLC was required, which is the standard latency generally adopted to exclude synchronous primary cancers (6-8). We excluded from the analysis: (I) patients with a different histological diagnosis from NSCLC (i.e., neuroendocrine, carcinoid, small cell carcinoma, oat cell carcinoma, sarcoma, and mesothelioma histology) as the natural history, as treatment, and/or outcome of these histologic subtypes differ from those of NSCLC; (II) patients with simultaneous diagnosis of lung carcinoma and lymphoma; (III) patients diagnosed with an additional second malignancy before and after their diagnosis of NSCLC, as it was difficult to understand whether previous lymphoma or second malignancy affected lung cancer outcome; (IV) patients with incomplete follow-up.

The end-points of the paper were to evaluate post-operative morbidity and mortality of lung cancer resection and prognostic risk factors of overall survival. The study design was approved by Local Ethics Committees of University of Campania Luigi Vanvitelli (approvation code: 228/19), coordinating center of the study, and then approved by each participating center. All patients gave a written informed consent for the surgical treatment and were aware that all information could be used anonymously for scientific purpose only.

Data abstraction

The following data were recorded for each patient: gender, smoking history, age at diagnosis of lymphoma and at

Table 1 Characteristics of lymphoma (n=164)

Variables	Number [%]
Gender (male/female)	123 [75]/41 [25]
Smokers	130 [79]/34 [21]
Age at lymphoma diagnosis (years)	49±15
≤29	26 [16]
30–39	39 [24]
40–49	71 [43]
≥50	28 [17]
Lymphoma B symptoms	
No	84 [51]
Yes	45 [27]
Unknown	35 [22]
Lymphoma stage	
I	63 [38]
II	46 [28]
III	39 [24]
IV	16 [10]
Lymphoma classification	
Hodgkin disease	21 [13]
Non-Hodgkin disease	143 [87]
Follicular cell lymphoma	69 [42]
Diffuse large B-cell lymphoma	44 [27]
T-cell lymphoma	2 [1]
Mantle cell lymphoma	10 [6]
MALT lymphoma	14 [9]
Burkitt lymphoma	4 [2]
Treatment of lymphoma	
RT alone	74 [45]
CT alone	54 [33]
RT + CT	27 [16]
RT + CT + surgery	9 [5]

CT, chemotherapy; RT, radiotherapy; MALT, mucosa-associated lymphoid tissue.

diagnosis of NSCLC, stage, and histology of lymphoma; treatment given for lymphoma including radiotherapy, chemotherapy or combined radio-chemotherapy, histology and stage of NSCLC re-classified based on the latest, 8th

edition of TNM staging system, treatments given for lung carcinoma including surgery, chemotherapy, radiotherapy or combined chemo-radiotherapy. For patients undergoing lung cancer resection, we also evaluated the type of resection and post-operative morbidity and mortality. Operative mortality was defined as any death within 30 days of operation or prior to discharge.

Survival

End points of the analysis included overall survival, and lung cancer specific survival. Overall survival was measured from the date of surgery until death. Patients without events were censored at the time of last follow up. Lung cancer specific survival was calculated from the date of surgery until death due to lung cancer.

Statistical analysis

Data were reported as mean ± standard deviation (SD), or median and interquartile range for continuous variables or as number and percentages for categorical variables. The chi-square test and Fisher's exact test were performed to evaluate significant differences of proportions or percentages between two groups. Particularly Fisher's exact test was used where the chi-square test was not appropriate. Significant difference between two means was evaluated with Student's *t*-test. Survival curves were calculated by the Kaplan-Meier method, and differences assessed by log-rank test. Univariate analysis was performed and the hazard ratio (HR) with confidence interval at 95% were evaluated to compare two conditions or states, in this way we identified the prognostic factors influencing the overall survival. The variables reaching statistically significant difference entered into a multivariate regression analysis with forward selection and backward elimination, using death as endpoint (dependent variable). A *P*<0.05 was considered statistically significant. We used MedCalc statistical software (Version 12.3, Broekstraat 52; 9030 Mariakerke; Belgium) for all statistical analyses

Results

One hundred and seventy-nine patients with lung cancer diagnosis and a history of lymphoma were retrospectively identified; of these, 15 patients were excluded due to a different histological diagnosis from NSCLC (n=7), presence of additional second malignancy before diagnosis of NSCLC (n=3), or incomplete follow-up (n=5). Thus, our

study population included 164 patients.

Lymphoma data

Data are summarized in *Table 1*. The mean age at lymphoma diagnosis was 49 ± 15 years. The majority of patients were male ($n=123/164$; 75%) and smokers ($n=155/164$; 95%), presented no lymphoma B symptoms ($n=84/164$; 51%), and had stage I ($n=63/164$; 38%) disease. The most common type of lymphoma was NHD ($n=143/164$; 87%), and follicular cell lymphoma was the most represented histological subtype ($n=69/143$; 48%). If considering lymphoma treatment, 74 (45%) patients received radiotherapy (RT), 54 (33%) chemotherapy (CT), 27 (16%) CT associated with RT, and 9 (5%) patients a combined treatment with RT, CT and surgery including splenectomy ($n=6$), gastrectomy ($n=1$), or intestinal resection ($n=1$).

Lung cancer data

Data are summarized in *Table 2*. The mean age at lung cancer diagnosis was 57 ± 9.7 years, and most patients were smokers ($142/164$; 87%). The mean latency between diagnosis of lymphoma and that of lung cancer was 8.8 ± 2.1 years, with 79% of patients who developed lung cancer >5 years following lymphoma diagnosis (peak of incidence between 5 and 10 years: 55%). In most cases ($n=134$; 82%) patients were asymptomatic, and the lung cancer detection was made incidentally on chest X-RAY or chest computed tomography scan performed during lymphoma follow-up, lung cancer screening program, and preoperative screening for other surgical procedures (i.e., inguinal hernia, cataract etc.). The 30 (18%) remaining patients presented with signs and symptoms related to lung cancer. The most common histological types of lung cancer were adenocarcinoma ($n=110/164$; 67%). One hundred and six (65%) patients presented stage I, 29 (18%) stage II, 18 (11%) stage III, and 11 (7%) stage IV disease. Lung cancer resection was performed in 145 patients out of 164 (88%) including lobectomy ($n=114$; 79%), sublobar resection ($n=21$; 14%), bilobectomy ($n=7$; 5%); and pneumonectomy ($n=3$; 2%) followed by adjuvant chemotherapy and/or RT, if indicated. The remaining 19 (12%) patients underwent CT and/or RT due to the advanced stage of the tumor or unfit clinical condition.

Post-operative morbidity and mortality, long-term follow-up

Data are summarized in *Table 3*. Twenty-three out of

145 patients (16%) patients presented post-operative complications including air-leaks ($n=10$), atelectasis needing bronchoscopic aspiration ($n=8$), atrial fibrillation ($n=4$), and infection of surgical site ($n=1$). One patient (0.6%) died 25 days after pneumonectomy for acute respiratory distress syndrome (ARDS).

During the follow-up, 68 (41%) patients died due to recurrence or metastasis from lung cancer ($n=31$; 20%) or lymphoma ($n=12$; 7.3%), Acute Myocardial Infarction ($n=13$; 8%), respiratory failure ($n=7$; 4%); and cerebrovascular accident ($n=5$; 3%).

Lymphoma status

At the time of lung cancer diagnosis, 146 (89%) out of 164 patients were in complete clinical remission, while the remaining 18 (11%) patients presented active lymphoma. As summarized in *Table 2*, the comparison of active lymphoma versus non active lymphoma group showed no significant difference regarding the different lung cancer variables: age at lung cancer diagnosis (55 ± 9.7 vs. 57 ± 8.3 years; $P=0.63$), latency between lymphoma and lung cancer diagnosis (8.3 ± 3.1 vs. 8.8 ± 4.1 years; $P=0.67$); incidental diagnosis (83% vs. 72%; $P=0.90$); pre-operative morbidity (38% vs. 51%, $P=0.31$), histology and stage disease, lung cancer resection (83% vs. 89%; $P=0.41$); post-operative morbidity (11% vs. 14%; $P=0.12$) and post-operative mortality (0 vs. 0.6%; $P=0.72$). “Active lymphoma” had a higher rate of death due to lymphoma recurrence or metastasis than that of “no active” lymphoma group (22% vs. 5.4%, $P=0.01$).

Survival

The median overall survival after the diagnosis of lung cancer was 63 (range, 58–85) months, and the 5-YSR was 54% (*Figure 1*).

Lymphoma characteristics

Median overall survival of patients with age ≤ 29 ; 30–39; 40–49; ≥ 50 years was 63 (range, 16–73); 59 (range, 24–64); 67 (range, 60–85); 42 (range, 28–72); 63 (range, 59–85) months, respectively. No significant difference was found among patient groups stratified according to age at lymphoma diagnosis ($P=0.20$; *Figure 2A*). Survival of HL patients compared to that of NHL patients showed no significant difference [67 (range, 24–85) vs. 61 (range, 51–85) months; HR: 1.1 (0.59–2.42); $P=0.65$]; among NHL

Table 2 Characteristics of lung cancer (n=164)

Variables	Total population (n=164)	Active lymphoma (n=18)	No active lymphoma (n=146)	P value
Age at lung cancer diagnosis	57±9.7	55±9.7	57±8.3	0.63
≤59 years	68 [41]	7 [39]	61 [42]	0.77
60 to 69 years	65 [40]	9 [50]	56 [38]	0.37
≥70 years	31 [19]	2 [11]	29 [20]	0.76
Latency between lymphoma and lung cancer diagnosis	8.8±2.1	8.3±3.1	8.8±4.1	0.67
≤5 years	34 [21]	2 [11]	32 [22]	0.6
>5 to 10 years	90 [55]	10 [56]	80 [55]	0.99
>10 to 15 years	30 [18]	4 [22]	26 [18]	0.7
>15 years	10 [6]	2 [11]	8 [5]	0.43
Pre-operative morbidity	81 [49]	7 [39]	74 [51]	0.31
COPD	19 [12]	2 [11]	17 [11.6]	
Cardiac disease	20 [12]	2 [11]	18 [12.3]	
Vascular disease	10 [6]	1 [6]	9 [6]	
Diabetes	15 [9]	1 [6]	14 [10]	
Renal failure	3 [2]	–	3 [2]	
Others	14 [9]	1 [6]	13 [9]	
Symptoms at time of lung cancer diagnosis				
No symptoms	134 [82]	15 [83]	119 [82]	0.9
Symptoms*	30 [18]	3 [17]	27 [18]	0.79
Cough	9 [5]	3 [2]	6 [4]	
Pneumothorax	1 [0.6]	–	1 [0.6]	
Hemoptysis	5 [3]	–	5 [3]	
Pleural effusion	3 [2]	–	3 [2]	
Chest pain	10 [6]	1 [6]	10 [7]	
Dyspnea	13 [8]	1 [6]	13 [9]	
Pneumonia	2 [1]	–	2 [1]	
Histology of lung cancer				
Adenocarcinoma	110 [67]	11 [61]	99 [68]	0.52
Squamous cell carcinoma	42 [26]	5 [28]	37 [25]	0.87
Large cell carcinoma	12 [7]	2 [11]	10 [7]	0.59

Table 2 (continued)

Table 2 (continued)

Variables	Total population (n=164)	Active lymphoma (n=18)	No active lymphoma (n=146)	P value
Stage disease (8 th edition)				
IA1	40 [24]	5 [28]	35 [24]	0.77
IA2	29 [18]	2 [11]	27 [18]	0.4
IA3	21 [13]	2 [11]	19 [13]	0.76
IB	16 [10]	1 [6]	15 [10]	0.47
IIA	6 [3]	2 [11]	4 [3]	0.07
IIB	23 [14]	3 [17]	20 [14]	0.79
IIIA	15 [9]	2 [11]	13 [9]	0.83
IIIB	3 [2]	0	3 [2]	0.54
IV	11 [7]	1 [6]	10 [7]	0.83
Treatment of lung cancer				
Surgical resection	145 [88]	15 [83]	130 [89]	0.41
Lobectomy	114 [78]	12 [80]	102 [70]	0.68
Wedge resection	10 [7]	1 [1]	9 [6]	0.83
Segmentectomy	11 [8]	1 [1]	10 [7]	0.76
Bilobectomy	7 [5]	1 [1]	6 [4]	0.88
Pneumonectomy	3 [2]	0	3 [2]	0.54
No resection	19 [22]	3 [17]	16 [11]	0.54

*, some patients presented more than one symptom.

Table 3 Post-operative morbidity, post-operative mortality, cause of death

Variables	Total population (n=164)	Active lymphoma (n=18)	No active lymphoma (n=146)	P value
Post-operative morbidity	23 [14]	2 [11]	21 [14]	0.12
Air leaks	10 [6]	1 [6]	9 [6]	
Atelectasis	8 [5]	1 [6]	7 [5]	
Atrial fibrillation	4 [3]	–	4 [3]	
Infection of surgical site	1 [1]	–	1 [1]	
Post-operative mortality	1 [1]	–	1 [0.7]	0.72
Cause of death	68 [41]	11 [61]	57 [39]	0.08
Recurrence or metastasis lung cancer	31 [19]	3 [17]	28 [19]	0.74
Recurrence or metastasis lymphoma	12 [7]	4 [22]	8 [5.5]	0.01
Other medical conditions	25 [15]	4 [22]	21 [14]	0.43
Myocardial ischemia	13 [8]	2 [11]	11 [8]	
Respiratory failure	7 [4]	1 [6]	6 [4]	
Cerebral Ictus	5 [3]	1 [6]	4 [3]	

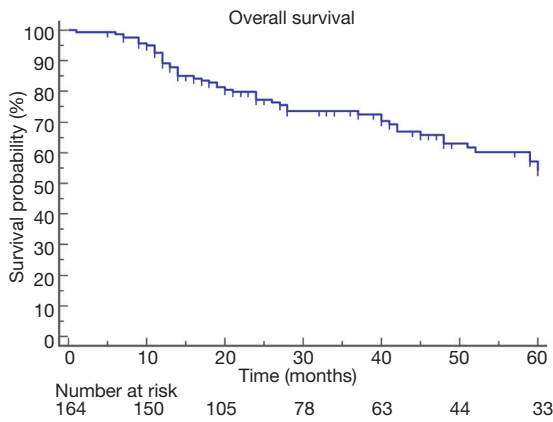


Figure 1 The median overall survival after diagnosis of lung cancer was 63 (range, 58–85) months.

patients the comparison of survival among patient groups stratified according to different histology also showed no significant difference ($P=0.11$, *Figure 2B*). The overall survival for patients with stage I; stage II; stage III; and stage IV lymphoma were 67 (range, 61–75); 72 (range, 59–85); 45 (range, 19–48); 51 (range, 14–59) months, respectively; no significant difference was found among patient groups stratified according to lymphoma stage ($P=0.08$; *Figure 2C*). The overall survival for patients undergoing radiotherapy (RT); chemotherapy (CT); RT plus CT; RT + CT + surgery were: 60 (range, 41–85); 61 (range, 41–85); 72 (range, 51–75); 61 (range, 11–76) months, respectively. No significant difference was found among patient groups stratified according to lymphoma treatment ($P=0.56$; *Figure 2D*).

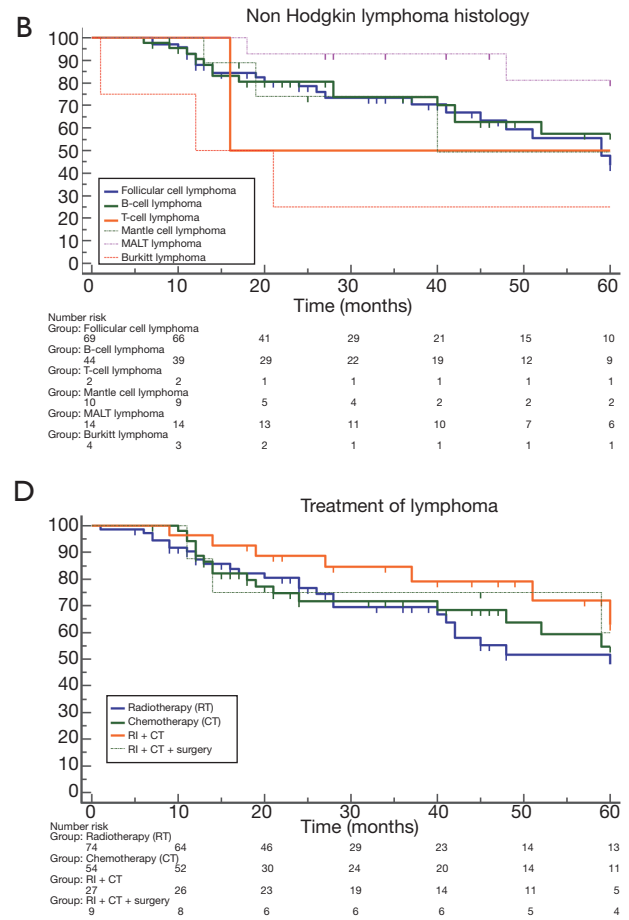
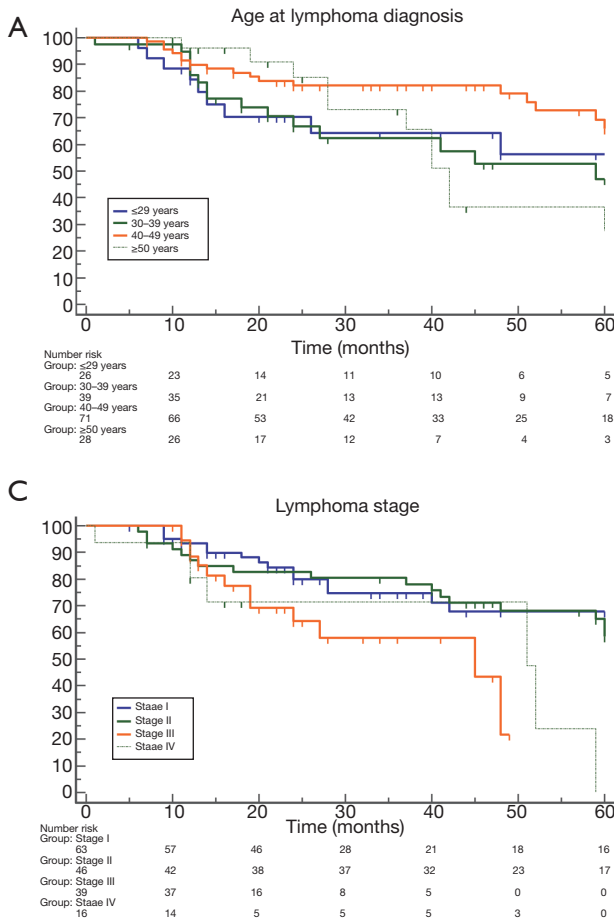


Figure 2 No significant difference was found among patients groups stratified according to age at lymphoma diagnosis ($P=0.20$; Part A); Non-Hodgkin lymphoma histology ($P=0.11$, Part B); lymphoma stage ($P=0.08$; Part C); and lymphoma treatment ($P=0.56$; Part D).

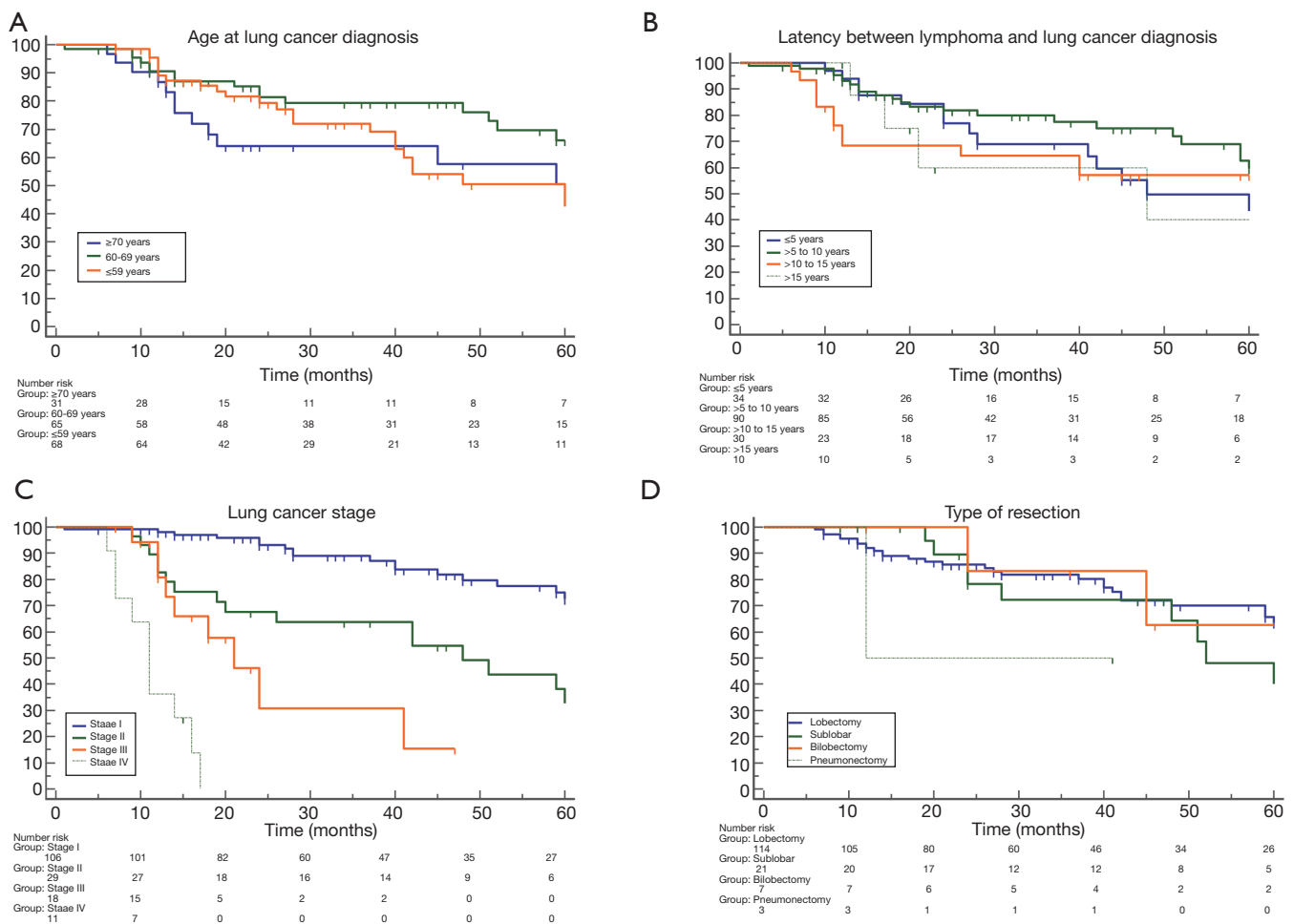


Figure 3 No significant difference was found among patients stratified according to age at lung cancer diagnosis ($P=0.17$; Part A); latency between lymphoma and lung cancer diagnosis ($P=0.07$; Part B); and different type of resections ($P=0.23$; Part D), while significant difference was found among patients stratified according to lung cancer stage ($P<0.0001$; Part C).

Lung cancer characteristics

The median overall survival for patients with age ≤ 59 ; 60–69; and ≥ 70 years was: 63 (range, 18–73); 67 (range, 59–85); and 60 (range, 40–85) months, respectively; and no significant difference was found among patients stratified according to age at lung cancer diagnosis ($P=0.17$; Figure 3A). The median overall survival for patients with latency between lymphoma and lung cancer diagnosis ≤ 5 ; >5 to 10; >10 to 15; and >15 years was: 48 (range, 28–75); 67 (range, 59–85); 61 (range, 12–63), 48 (range, 13–79) respectively; no significant difference was found among patients stratified according to different latency ($P=0.07$; Figure 3B). Patients whose lung tumors were detected incidentally had a significantly better survival than that of symptomatic

patients [67 (range, 63–85) vs. 28 (range, 18–45) months; HR: 5.3 (2.76 to 10.3); $P<0.0001$]. The overall survival for patients with stage I; stage II; stage III; and stage IV disease was: 76 (range, 64–85); 48 (range, 20–75); 21 (range, 13–41); 11 (range, 7–17) months, respectively. Significant difference was found by the comparison of patients stratified according to different stage disease ($P<0.0001$; Figure 3C). The overall survival for patients with adenocarcinoma, squamous cell carcinoma, and large cell carcinoma was: 61 (range, 50–81); 51 (range, 25–61); 43 (range, 20–59) months, respectively; no significant difference was found comparing patients stratified according to different histology ($P=0.11$). Patients undergoing lung cancer resection had better survival compared to that of non-surgical patients [64 (range, 60–85)

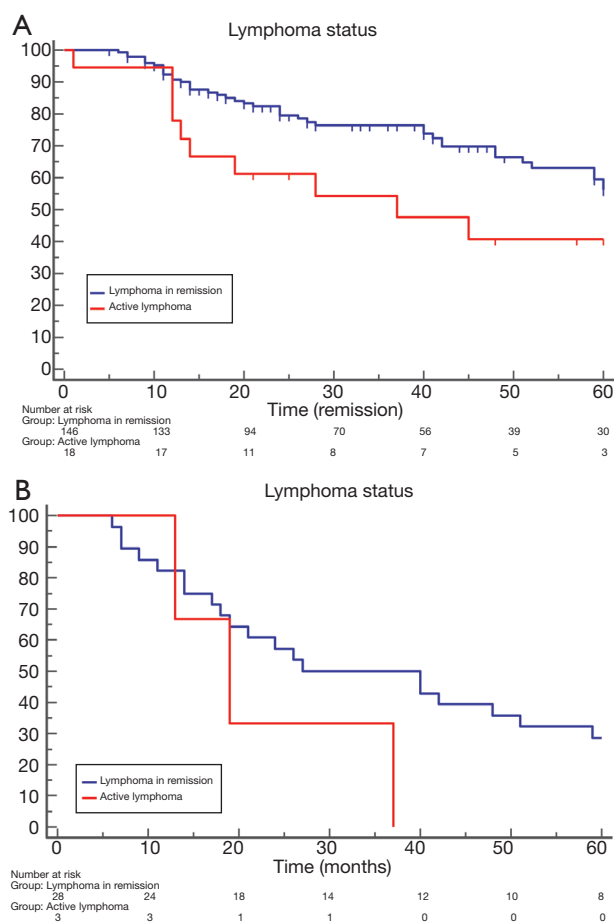


Figure 4 Patients with lymphoma in remission compared with those with active lymphoma presented significant better survival [64 (range, 59–85) *vs.* 37 (range, 13–75) months; HR: 2.4; $P=0.02$; Part A], but lung cancer specific survival showed no significant difference [27 (range, 18–85) *vs.* 19 (range, 13–37) months; HR: 0.3; $P=0.17$; Part B].

vs. 14 (range, 11–18) months; HR: 1.7 (2.8–4.7); $P<0.0001$]. No significant difference was found among patients stratified according to the different type of resections ($P=0.23$; *Figure 3D*).

Lymphoma status

Patients with lymphoma in remission presented a significantly better overall survival than those with active lymphoma [64 (range, 59–85) *vs.* 37 (range, 13–75) months; HR: 2.4 (1.09–5.49); $P=0.02$; *Figure 4A*]. The comparison of lung cancer specific survival showed no significant difference between no active lymphoma and active lymphoma patients [27 (range, 18–85) *vs.* 19 (range, 13–37)

months; HR: 0.3 (0.05–1.70); $P=0.17$; *Figure 4B*].

Univariable and multivariable analysis for overall survival

Data are summarized in *Table 4*. At univariable analysis no-active lymphoma (HR: 2.19; $P=0.0152$); early lymphoma stage (HR: 1.95; $P=0.01$); adenocarcinoma histology (HR: 0.59; $P=0.0421$); early stage of lung cancer (HR: 3.18; $P<0.0001$); incidental diagnosis of lung cancer (HR: 1.71; $P<0.0001$); and lung cancer resection (HR: 2.79; $P<0.0001$) were favorable prognostic factors. At multivariable analysis, no-active lymphoma (HR: 2.68; $P=0.0043$); early stage of lung cancer (HR: 2.37; $P<0.0001$); incidental diagnosis of lung cancer (HR: 2.00; $P<0.0001$); and lung cancer resection (HR: 2.07; $P<0.0001$) were confirmed to be favorable prognostic factors.

Discussion

The increased risk of lung cancer among lymphoma survivors has been well described in several papers and meta-analyses (2–6), but limited information exists about the prognosis and treatment outcome of lung cancer. Milano *et al.* (7,8) and Kim *et al.* (9) evaluated survival of lymphoma patients who developed NSCLC, and matched them with non-lymphoma patients with *de novo* NSCLC. Both authors (7–9) found that lymphoma patients faced worse survival than did non-lymphoma patients. These findings supported the hypothesis that previous lymphoma adversely affect the survival and outcome of lung cancer treatment, but it is still unclear which lymphoma survivors with lung cancer could benefit from lung cancer resection. To investigate this issue, we evaluated the outcome and prognostic factors of lung cancer in lymphoma survivors in order to improve the patient selection for lung cancer treatment

First, we found that the safety of surgery was not impacted by lymphoma, as the latter disease did not significantly increase post-operative morbidity and mortality rate. Twenty-three (16%) patients presented post-operative complications including air-leaks (7%), atelectasis needing bronchoscopic aspiration (5%), atrial fibrillation (3%), and infection of surgical site (1%) while only one patient (0.6%) died of ARDS 25 days after pneumonectomy. These complications seemed to be correlated to the underlying patient's diseases as chronic obstructive pulmonary disease (COPD), diabetes, cardiac disease, and extent of lung resection rather than to previous lymphoma. Furthermore, no patients presented pneumonia that was the most

Table 4 Univariable and Multivariable analysis (dependent variable: overall survival)

Covariates	Univariable				Multivariable			
	Coefficient	HR	95% CI	P value	Coefficient	HR	95% CI	P value
Sex (male vs. female)	0.42	1.52	0.81–2.84	0.19				
No active lymphoma (yes vs. not)	0.79	2.19	1.16–4.14	0.0152	1.00	2.68	1.36–5.26	0.0043
Age at Lymphoma diagnosis (≤ 39 vs. ≥ 40 years)	-0.03	0.97	0.74–1.29	0.85				
Type of lymphoma (HL vs. NHL)	0.56	0.34	0.63–1.69	0.76				
Stage of lymphoma (stage I–II vs. stage III–IV)	1.59	1.95	1.68–2.03	0.01	0.67	0.98	0.97–2.96	0.78
Treatment of lymphoma (RT alone vs. others)	-0.19	0.83	0.63–1.09	0.18				
Age at NSCLC diagnosis (≤ 59 vs. ≥ 60 years)	0.21	1.24	0.87–1.76	0.24				
Incidental diagnosis of lung cancer (yes vs. not)	0.54	1.71	1.41–2.08	<0.0001	0.69	2.00	1.48–2.70	<0.0001
Histology of NSCLC (adenocarcinoma vs. others)	-0.52	0.59	0.36–0.98	0.0421	0.19	1.20	0.67–2.15	0.53
NSCLC stage (stage I–II vs. stage III–IV)	1.16	3.18	2.28–4.24	<0.0001	0.86	2.37	1.60–3.51	<0.0001
Lung cancer resection (yes vs. not)	-2.45	2.79	2.98–3.65	<0.0001	0.86	2.07	1.51–2.75	<0.0001

HL, Hodgkin lymphoma; NHL, non-Hodgkin lymphoma; RT, radiotherapy; NSCLC, non-small cell lung cancer.

common complication reported by other authors (10,11) in lymphoma survivors undergoing lung cancer resection, most likely due to the lymphoma related immunodeficiency. In line with our data, Kim *et al.* (9) found no significant difference in postoperative morbidity and mortality between lymphoma patients and no-lymphoma patients after lung cancer resection. However, the authors (9) reported a mortality rate of 6% that was three times higher after standard lobectomy compared to matched no-lymphoma lung cancer patients. Therefore, these patients need more aggressive postoperative monitoring, especially in case of comorbid condition and extended resection such as pneumonectomy.

Second, we observed in our series a median overall survival of 63 months (mean, 54.8 \pm 2.5 months) that was better than what reported by other authors. Schoenfeld *et al.* (1) showed a median survival time of 10.3 months even because two thirds of the patients (67%) presented an advanced stage disease, (stage III or stage IV). Laurie *et al.* (12) reported a median survival of 5.1 months, and no patient lived longer than 10.5 months. Complete resection was achieved in 5 cases and only 2 of which (25%) presented stage I disease. The remaining 14 patients did not undergo a complete resection, and showed a median survival of 3.0 months. De Giacomo *et al.* (11) reported a 5-YSR of 20% and only 40% of patients had an early stage lung cancer. Das *et al.* (13) found a median survival of 9 months. Most patients (85%) presented at advanced disease stage (III or

stage IV), and 40% underwent surgery. Yet, some patients presented different histology from NSCLC (i.e., small-cell lung cancer and mesothelioma). Riquet *et al.* (14) reported a 5-YSR of 38.1% (median 34 months), and 5 of 36 (14%) patients had pN2 disease. Thus, the higher percentage of patients with stage I lung cancer, as well as the higher rate of patients undergoing surgery, and the exclusion of those with different histology from NSCLC could explain our different results. This is further confirmed by Kim *et al.* (9) who reported a median overall survival duration of 53 months. All patients underwent surgery, and 70% presented Stage I disease.

Third, we found that early lung cancer stage, no-active lymphoma status at the time of lung cancer diagnosis, lung cancer resection, and incidental diagnosis of lung cancer were favorable predictors for overall survival. Incidental diagnosis of lung cancer allowed to make diagnosis of cancer at an early stage with the possibility of surgical treatment. Similarly, in Schoenfeld's series (1) the subgroup of HL patients (n=12) with subsequent incidentally diagnosed lung malignancy presented a significant longer survival time (median 48 months after initial diagnosis) than that of patients who presented with symptomatic lung disease. Surgery was the only therapeutic chance for these patients, because definitive thoracic radiotherapy would be precluded in most patients by prior mantle-field radiation therapy. This observation was also confirmed by Laurie *et al.* (12) who found that only patients who underwent

complete resection of their lung carcinoma were long-term survivors. Active lymphoma adversely affected overall survival, but no significant difference was found in lung cancer specific survival between active lymphoma and no active lymphoma patients. These results may be explained since patients with active lymphoma died of lymphoma recurrence or metastasis in a significantly higher rate than patients with no-active lymphoma ($P=0.01$), while the mortality rate due to lung cancer recurrence or metastasis was similar between the two sub-groups ($P=0.74$). Our data were also confirmed by Kim *et al.* (9) who found no significant difference regarding lung cancer specific survival between active lymphoma patients and no-active lymphoma patients, despite active lymphoma, also in our series, was shown to be an adverse significant prognostic factor at multivariable analysis. Thus, patients with active lymphoma could achieve reasonable survival after lung cancer resection, but they should be carefully selected for surgery (i.e., early stage lung cancer, treatable NHL, and adequate cardio-respiratory function). Differently from other authors (7-9), we found that previous radiotherapy for lymphoma, different histological types of lymphoma, and older age did not significantly affect the overall survival. Milano *et al.* (7,8) found that different histology sub-types and radiotherapy for lymphoma significantly influenced survival. However, the authors (7,8) evaluated only patients with HL, and in their series previous RT for lymphoma significantly limited the possibility of radiotherapy treatment for NSCLC. Conversely, in our series including patients with NH and NHL, RT for lymphoma did not have a significant impact on survival, as only one of the 10 patients scheduled for RT did not receive full dose radiation due to previous irradiation for lymphoma. Kim *et al.* (9) found that older age was an adverse prognostic factor in patients with lymphoma and lung cancer. In our series, 22 of 31 patients (71%) older than 70 years had an early stage tumor, probably because they were more likely to undergo diagnostic workups for related symptoms than younger patients. This was also observed in Milano's studies (7,8). Fifteen of these patients (72%) underwent lung cancer resection, and in 11 (73%) cases a sublobar resection rather than a more extended resection was carried out. This strategy allowed to reduce the risk of post-operative morbidity, without significantly affecting the oncological results (15,16).

Fourth, the increased survival found in our patients with incidentally diagnosed lung cancer supported the usefulness of lung cancer screening in lymphoma survivors. The National Lung Screening Trial (NLST) found that CT

screening reduced lung cancer deaths of 20% in high risk population (17). Based on these data, the National Comprehensive Cancer Network (NCCN) categorized patients with prior lymphoma as a high-risk group only if they are more than 50 years old and have a smoking history (18). It was recommended that those patients should have annual low-dose helical CT scan for 2 years (category 1) and should be considered for an annual screening if they are clinically fit for definitive treatment. However, Ibrahim *et al.* (4) in a recent meta-analysis supported these recommendations should be reconsidered for several reasons. The NLST study (17) did not include patients with prior lymphoma, and only 0.1% of patients were younger than 55 years of age. Moreover, the median age at the diagnosis of second lung cancer in Ibrahim *et al.* (4) meta-analysis was 45.0 years, and the rate of developing second lung cancer remained high after 15 years of follow-up. Our results seemed to confirm this hypothesis as the incidence of lung cancer reached its peak at 5–10 years following primary lymphoma treatment (55%), and remained elevated after 10 years of follow-up (24%). Thus, we also support the need for continued follow-up of these patients, also considering that screening for breast cancers in young women treated for HL has been recommended to start ~8 to 10 years after HL treatment (19). Therefore, we believe that lymphoma survivors should receive a closer follow-up than the general population. Following treatment of lymphoma, survivors tend to switch to health-care providers and often lose contact with their oncologists. Thus, it is essential that all physicians should promote appropriate investigations to screen second carcinomas, especially primary lung carcinomas in smokers and former smokers, keeping in mind that latency time to the development of further malignancies could be long. Smoking cessation and abstinence are likely to have the greatest impact on reducing the mortality from lung carcinoma in this population. Ibrahim's meta-analysis (1) showed that approximately 80% of patients with second lung cancer had a history of smoking, and these data are in line with ours and many reported series. Travis *et al.* (20) showed that in 24% of lymphoma survivors, incidence of second lung cancer could be attributable to smoking alone, while other studies (21,22) found that the risk of developing second lung cancer was positively associated with increasing number of pack-years smoked.

Study limitations

Our study presents several limitations that do not allow

to draw definitive conclusions. Due to the retrospective and the multicenter nature of the study, there was not a standardized treatment for lymphoma (i.e., different protocol and regimen of chemotherapy and radiotherapy) and for NSCLC (i.e., different type of resection), but the treatment depended on the era of diagnosis, and the choice of physicians in the treating center. In some cases, there was a lack of detailed information about the site of radiotherapy and/or tobacco history (i.e., number of pack-year), while other variables as weight loss and performance status were not considered.

Conclusions

The history of lymphoma or an active lymphoma should not be considered a contraindication to surgical treatment of lung cancer in selected patients who present with early stage lung cancer and are clinically fit for surgery. The increased survival observed in patients with an incidentally diagnosed lung cancer supports the usefulness of lung cancer screening in lymphoma survivors to detect lung cancer at an early stage. Due to the limitations of a retrospective analysis, our results should be furtherly validated by a prospective randomized study.

Acknowledgments

Funding: This study was supported by the funding of “VALERE” research program from University of Campania Luigi Vanvitelli.

Footnote

Conflicts of Interest: The authors have no conflicts of interest to declare.

Ethical Statement: The authors are accountable for all aspects of the work in ensuring that questions related to the accuracy or integrity of any part of the work are appropriately investigated and resolved. The study design was approved by Local Ethics Committees of University of Campania Luigi Vanvitelli (approvation code: 228/19), coordinating center of the study, and then approved by each participating center. All patients gave a written informed consent for the surgical treatment and were aware that all information could be used anonymously for scientific purpose only.

Data Sharing Statement: No additional data available.

Open Access Statement: This is an Open Access article distributed in accordance with the Creative Commons Attribution-NonCommercial-NoDerivs 4.0 International License (CC BY-NC-ND 4.0), which permits the non-commercial replication and distribution of the article with the strict proviso that no changes or edits are made and the original work is properly cited (including links to both the formal publication through the relevant DOI and the license). See: <https://creativecommons.org/licenses/by-nc-nd/4.0/>.

References

1. Schoenfeld JD, Mauch PM, Das P, et al. Lung malignancies after Hodgkin lymphoma: disease characteristics, detection methods and clinical outcome. *Ann Oncol* 2012;23:1813-8.
2. Okines A, Thomson CS, Radstone CR, et al. Second primary malignancies after treatment for malignant lymphoma. *Br J Cancer* 2005;93:418-24.
3. Franklin J, Pluetschow A, Paus M, et al. Second malignancy risk associated with treatment of Hodgkin's lymphoma: meta-analysis of the randomised trials. *Ann Oncol* 2006;17:1749-60.
4. Ibrahim EM, Kazkaz GA, Abouelkhair KM, et al. Increased risk of second lung cancer in Hodgkin's lymphoma survivors: a meta-analysis. *Lung* 2013;191:117-34.
5. Castellino SM, Geiger AM, Mertens AC, et al. Morbidity and mortality in long-term survivors of Hodgkin lymphoma: a report from the Childhood Cancer Survivor Study. *Blood* 2011;117:1806-16.
6. Ng AK, Bernardo MP, Weller E, et al. Long-term survival and competing causes of death in patients with early-stage Hodgkin's disease treated at age 50 or younger. *J Clin Oncol* 2002;20:2101-8.
7. Milano MT, Li H, Constine LS, et al. Variables affecting survival after second primary lung cancer: A population-based study of 187 Hodgkin's lymphoma patients. *J Thorac Dis* 2012;4:22-9.
8. Milano MT, Li H, Gail MH, et al. Long-term survival among patients with Hodgkin's lymphoma who developed breast cancer: a population-based study. *J Clin Oncol* 2010;28:5088-96.
9. Kim MP, Correa AM, Swisher SG, et al. Non-small cell lung cancer resection in lymphoma patients. *Ann Thorac Surg* 2010;90:210-6.

10. Provencio M, España P, Salas C, et al. Hodgkin's disease: correlation between causes of death at autopsy and clinical diagnosis. *Ann Oncol* 2000;11:59-64.
11. De Giacomo T, Martelli M, Venuta F, et al. Lung cancer after treatment for non-Hodgkin lymphoma. *Minerva Chir* 2006;61:467-71.
12. Laurie SA, Kris MG, Portlock CS, et al. The clinical course of nonsmall cell lung carcinoma in survivors of Hodgkin disease. *Cancer* 2002;95:119-26.
13. Das P, Ng AK, Stevenson MA, et al. Clinical course of thoracic cancers in Hodgkin's disease survivors. *Ann Oncol* 2005;16:793-7.
14. Riquet M, Arame A, Foucault C. Does presence of hematologic malignancy change our approach to non-small cell lung cancer? *Ann Thorac Surg* 2011;91:1652-3.
15. Fiorelli A, Caronia FP, Daddi N, et al. Sublobar resection versus lobectomy for stage I non-small cell lung cancer: an appropriate choice in elderly patients? *Surg Today* 2016;46:1370-82.
16. Fiorelli A, Vicidomini G, Mazzella A, et al. The influence of body mass index and weight loss on outcome of elderly patients undergoing lung cancer resection. *Thorac Cardiovasc Surg* 2014;62:578-87.
17. National Lung Screening Trial Research Team Reduced lung-cancer mortality with low-dose computed tomographic screening. *N Engl J Med* 2011;365:395-409.
18. Wood DE, Kazerooni EA, Baum SL, et al. Lung Cancer Screening, Version 3.2018, NCCN Clinical Practice Guidelines in Oncology. *J Natl Compr Canc Netw* 2018;16:412-41.
19. Henderson TO, Amsterdam A, Bhatia S, et al. Systematic review: surveillance for breast cancer in women treated with chest radiation for childhood, adolescent, or young adult cancer. *Ann Intern Med* 2010;152:444-55.
20. Travis LB, Gospodarowicz M, Curtis RE, et al. Lung cancer following chemotherapy and radiotherapy for Hodgkin's disease. *J Natl Cancer Inst* 2002;94:182-92.
21. Metayer C, Lynch CF, Clarke EA, et al. Second cancers among long-term survivors of Hodgkin's disease diagnosed in childhood and adolescence. *J Clin Oncol* 2000;18:2435-43.
22. van Leeuwen FE, Klokman WJ, Stovall M, et al. Roles of radiotherapy and smoking in lung cancer following Hodgkin's disease. *J Natl Cancer Inst* 1995;87:1530-7.

Cite this article as: Fiorelli A, D'Andrilli A, Carlucci A, Vicidomini G, Loizzi D, Ardò NP, Marasco RD, Ventura L, Ampollini L, Carbognani P, Bocchialini G, Lococo F, Paci M, Di Stefano TS, Ardissoni F, Gagliasso M, Mendogni P, Rosso L, Mazzucco A, Vanni C, Marinucci BT, Potenza R, Matricardi A, Ragusa M, Tassi V, Anile M, Poggi C, Serra N, Sica A, Nosotti M, Sollitto F, Venuta F, Rendina EA, Puma F, Santini M; The LuCiLyS study group. Prognostic factors of lung cancer in lymphoma survivors (the LuCiLyS study). *Transl Lung Cancer Res* 2020;9(1):90-102. doi: 10.21037/tlcr.2019.12.28