

WIT Transactions on The Built Environment

VOLUME 187, 2019



Maritime Transport 2019

Maritime Transport

WIT^{PRESS}

WIT Press publishes leading books in Science and Technology.

Visit our website for new and current list of titles.

www.witpress.com

WIT^{eLibrary}

Home of the Transactions of the Wessex Institute.

Papers published in this volume are archived in the WIT eLibrary in volume 187 of
WIT Transactions on The Built Environment (ISSN 1743-3509).

The WIT eLibrary provides the international scientific community with immediate and
permanent access to individual papers presented at WIT conferences.

Visit the WIT eLibrary at www.witpress.com/elibrary.

First International Conference on
Maritime Transportation

Maritime Transport 2019

Conference Chairmen

G. Passerini

*Marche Polytechnic University, Italy
Member of WIT Board of Directors*

S. Ricci

University of Rome “La Sapienza”, Italy

International Scientific Advisory Committee

L. Aragonés
P. De Girolamo
S. Furio Pruñonosa
N. Guler
I. Makashina
J. Niedzwecki
W. Ravesteijn
G. Rodriguez
F. Rotoli
E. Veremey
P. Vorobief
G. Zappalà

Sponsored by

*WIT Transactions on the Built Environment
International Journal of Transport Development and Integration*

Organised by

*Wessex Institute, UK
University of Rome “La Sapienza”, Italy*

WIT Transactions

Wessex Institute
Ashurst Lodge, Ashurst
Southampton SO40 7AA, UK

Senior Editors

H. Al-Kayiem

Universiti Teknologi PETRONAS, Malaysia

G. M. Carlomagno

University of Naples Federico II, Italy

A. H-D. Cheng

University of Mississippi, USA

J. J. Connor

Massachusetts Institute of Technology, USA

J. Th M. De Hosson

University of Groningen, Netherlands

P. De Wilde

Vrije Universiteit Brussel, Belgium

N. A. Dumont

PUC-Rio, Brazil

A. Galiano-Garrigos

University of Alicante, Spain

F. Garzia

University of Rome "La Sapienza", Italy

M. Hadfield

University of Bournemouth, UK

S. Hernández

University of A Coruña, Spain

J. T. Katsikadelis

National Technical University of Athens, Greece

J. W. S. Longhurst

University of the West of England, UK

E. Magaril

Ural Federal University, Russia

S. Mambretti

Politecnico di Milano, Italy

W. J. Mansur

Federal University of Rio de Janeiro, Brazil

J. L. Miralles i Garcia

Universitat Politècnica de València, Spain

G. Passerini

Università Politecnica delle Marche, Italy

F. D. Pineda

Complutense University, Spain

D. Poljak

University of Split, Croatia

F. Polonara

Università Politecnica delle Marche, Italy

D. Proverbs

Birmingham City University, UK

T. Rang

Tallinn Technical University, Estonia

G. Rzevski

The Open University, UK

P. Skerget

University of Maribor, Slovenia

B. Sundén

Lund University, Sweden

Y. Villacampa Esteve

Universidad de Alicante, Spain

P. Vorobieff

University of New Mexico, USA

S. S. Zubir

Universiti Teknologi Mara, Malaysia

Editorial Board

- B. Abersek** University of Maribor, Slovenia
Y. N. Abousleiman University of Oklahoma, USA
G. Alfaro Degan Università Roma Tre, Italy
K. S. Al Jabri Sultan Qaboos University, Oman
D. Almorza Gomar University of Cadiz, Spain
J. A. C. Ambrosio IDMEC, Portugal
A. M. Amer Cairo University, Egypt
S. A. Anagnostopoulos University of Patras, Greece
E. Angelino A.R.P.A. Lombardia, Italy
H. Antes Technische Universität Braunschweig, Germany
M. A. Atherton South Bank University, UK
A. G. Atkins University of Reading, UK
D. Aubry Ecole Centrale de Paris, France
H. Azegami Toyohashi University of Technology, Japan
J. M. Baldasano Universitat Politècnica de Catalunya, Spain
J. Barnes University of the West of England, UK
J. G. Bartzis Institute of Nuclear Technology, Greece
S. Basbas Aristotle University of Thessaloniki, Greece
A. Bejan Duke University, USA
M. P. Bekakos Democritus University of Thrace, Greece
G. Belingardi Politecnico di Torino, Italy
R. Belmans Katholieke Universiteit Leuven, Belgium
D. E. Beskos University of Patras, Greece
S. K. Bhattacharyya Indian Institute of Technology, India
H. Bjornlund University of South Australia, Australia
E. Blums Latvian Academy of Sciences, Latvia
J. Boarder Cartref Consulting Systems, UK
B. Bobee Institut National de la Recherche Scientifique, Canada
H. Boileau ESIGEC, France
M. Bonnet Ecole Polytechnique, France
C. A. Borrego University of Aveiro, Portugal
A. R. Bretones University of Granada, Spain
F-G. Buchholz Universität Gesamthochschule Paderborn, Germany
F. Butera Politecnico di Milano, Italy
W. Cantwell Liverpool University, UK
C. Capilla Universidad Politécnica de Valencia, Spain
D. J. Cartwright Bucknell University, USA
P. G. Carydis National Technical University of Athens, Greece
J. J. Casares Long Universidad de Santiago de Compostela, Spain
A. Chakrabarti Indian Institute of Science, India
F. Chejne National University, Colombia
J-T. Chen National Taiwan Ocean University, Taiwan
J. Chilton University of Lincoln, UK
C-L. Chiu University of Pittsburgh, USA
H. Choi Kangnung National University, Korea
A. Cieslak Technical University of Lodz, Poland
C. Clark Wessex Institute, UK
S. Clement Transport System Centre, Australia
M. C. Constantinou State University of New York at Buffalo, USA
M. da C Cunha University of Coimbra, Portugal
W. Czyczula Krakow University of Technology, Poland
L. D'Acerno Federico II University of Naples, Italy
M. Davis Temple University, USA
A. B. de Almeida Instituto Superior Tecnico, Portugal
L. De Biase University of Milan, Italy
R. de Borst Delft University of Technology, Netherlands
G. De Mey University of Ghent, Belgium
A. De Naeyer Universiteit Ghent, Belgium
N. De Temmerman Vrije Universiteit Brussel, Belgium
D. De Wrachien State University of Milan, Italy
L. Debnath University of Texas-Pan American, USA
G. Degrande Katholieke Universiteit Leuven, Belgium
S. del Giudice University of Udine, Italy
M. Domaszewski Université de Technologie de Belfort-Montbéliard, France

- K. Dorow** Pacific Northwest National Laboratory, USA
- W. Dover** University College London, UK
- C. Dowlen** South Bank University, UK
- J. P. du Plessis** University of Stellenbosch, South Africa
- R. Duffell** University of Hertfordshire, UK
- A. Ebel** University of Cologne, Germany
- V. Echarri** University of Alicante, Spain
- K. M. Elawadly** Alexandria University, Egypt
- D. Elms** University of Canterbury, New Zealand
- M. E. M El-Sayed** Kettering University, USA
- D. M. Elsom** Oxford Brookes University, UK
- F. Erdogan** Lehigh University, USA
- J. W. Everett** Rowan University, USA
- M. Faghri** University of Rhode Island, USA
- R. A. Falconer** Cardiff University, UK
- M. N. Fardis** University of Patras, Greece
- A. Fayvisovich** Admiral Ushakov Maritime State University, Russia
- H. J. S. Fernando** Arizona State University, USA
- W. F. Florez-Escobar** Universidad Pontificia Bolivariana, South America
- E. M. M. Fonseca** Instituto Politécnico do Porto, Instituto Superior de Engenharia do Porto, Portugal
- D. M. Fraser** University of Cape Town, South Africa
- G. Gambolati** Universita di Padova, Italy
- C. J. Gantes** National Technical University of Athens, Greece
- L. Gaul** Universitat Stuttgart, Germany
- N. Georgantzis** Universitat Jaume I, Spain
- L. M. C. Godinho** University of Coimbra, Portugal
- F. Gomez** Universidad Politécnica de Valencia, Spain
- A. Gonzales Aviles** University of Alicante, Spain
- D. Goulias** University of Maryland, USA
- K. G. Goulias** Pennsylvania State University, USA
- W. E. Grant** Texas A & M University, USA
- S. Grilli** University of Rhode Island, USA
- R. H. J. Grimshaw** Loughborough University, UK
- D. Gross** Technische Hochschule Darmstadt, Germany
- R. Grundmann** Technische Universität Dresden, Germany
- O. T. Gudmestad** University of Stavanger, Norway
- R. C. Gupta** National University of Singapore, Singapore
- J. M. Hale** University of Newcastle, UK
- K. Hameyer** Katholieke Universiteit Leuven, Belgium
- C. Hanke** Danish Technical University, Denmark
- Y. Hayashi** Nagoya University, Japan
- L. Haydock** Newage International Limited, UK
- A. H. Hendrickx** Free University of Brussels, Belgium
- C. Herman** John Hopkins University, USA
- I. Hideaki** Nagoya University, Japan
- W. F. Huebner** Southwest Research Institute, USA
- M. Y. Hussaini** Florida State University, USA
- W. Hutchinson** Edith Cowan University, Australia
- T. H. Hyde** University of Nottingham, UK
- M. Iguchi** Science University of Tokyo, Japan
- L. Int Panis** VITO Expertisecentrum IMS, Belgium
- N. Ishikawa** National Defence Academy, Japan
- H. Itoh** University of Nagoya, Japan
- W. Jager** Technical University of Dresden, Germany
- Y. Jaluria** Rutgers University, USA
- D. R. H. Jones** University of Cambridge, UK
- N. Jones** University of Liverpool, UK
- D. Kaliampakos** National Technical University of Athens, Greece
- D. L. Karabalis** University of Patras, Greece
- A. Karageorghis** University of Cyprus
- T. Katayama** Doshisha University, Japan
- K. L. Katsifarakis** Aristotle University of Thessaloniki, Greece
- E. Kausel** Massachusetts Institute of Technology, USA
- H. Kawashima** The University of Tokyo, Japan
- B. A. Kazimee** Washington State University, USA
- F. Khoshnaw** Koya University, Iraq
- S. Kim** University of Wisconsin-Madison, USA
- D. Kirkland** Nicholas Grimshaw & Partners Ltd, UK
- E. Kita** Nagoya University, Japan
- A. S. Kobayashi** University of Washington, USA
- D. Koga** Saga University, Japan
- S. Kotake** University of Tokyo, Japan

- A. N. Kounadis** National Technical University of Athens, Greece
- W. B. Kratzig** Ruhr Universitat Bochum, Germany
- T. Krauthammer** Penn State University, USA
- R. Laing** Robert Gordon University, UK
- M. Langseth** Norwegian University of Science and Technology, Norway
- B. S. Larsen** Technical University of Denmark, Denmark
- F. Lattarulo** Politecnico di Bari, Italy
- A. Lebedev** Moscow State University, Russia
- D. Lesnic** University of Leeds, UK
- D. Lewis** Mississippi State University, USA
- K-C. Lin** University of New Brunswick, Canada
- A. A. Liolios** Democritus University of Thrace, Greece
- D. Lippiello** Università degli Studi Roma Tre, Italy
- S. Lomov** Katholieke Universiteit Leuven, Belgium
- J. E. Luco** University of California at San Diego, USA
- L. Lundqvist** Division of Transport and Location Analysis, Sweden
- T. Lyons** Murdoch University, Australia
- L. Mahdjoubi** University of the West of England, UK
- Y-W. Mai** University of Sydney, Australia
- M. Majowiecki** University of Bologna, Italy
- G. Manara** University of Pisa, Italy
- B. N. Mandal** Indian Statistical Institute, India
- Ü. Mander** University of Tartu, Estonia
- H. A. Mang** Technische Universitat Wien, Austria
- G. D. Manolis** Aristotle University of Thessaloniki, Greece
- N. Marchettini** University of Siena, Italy
- J. D. M. Marsh** Griffith University, Australia
- J. F. Martin-Duque** Universidad Complutense, Spain
- T. Matsui** Nagoya University, Japan
- G. Mattrisch** DaimlerChrysler AG, Germany
- F. M. Mazzolani** University of Naples "Federico II", Italy
- K. McManis** University of New Orleans, USA
- A. C. Mendes** Universidade de Beira Interior, Portugal
- J. Mera** Polytechnic University of Madrid, Spain
- J. Mikieliewicz** Polish Academy of Sciences, Poland
- R. A. W. Mines** University of Liverpool, UK
- C. A. Mitchell** University of Sydney, Australia
- K. Miura** Kajima Corporation, Japan
- A. Miyamoto** Yamaguchi University, Japan
- T. Miyoshi** Kobe University, Japan
- G. Molinari** University of Genoa, Italy
- F. Mondragon** Antioquin University, Colombia
- T. B. Moodie** University of Alberta, Canada
- D. B. Murray** Trinity College Dublin, Ireland
- M. B. Neace** Mercer University, USA
- D. Neculescu** University of Ottawa, Canada
- B. Ning** Beijing Jiatong University, China
- S-I. Nishida** Saga University, Japan
- H. Nisitani** Kyushu Sangyo University, Japan
- B. Notaros** University of Massachusetts, USA
- P. O'Donoghue** University College Dublin, Ireland
- R. O. O'Neill** Oak Ridge National Laboratory, USA
- M. Ohkusu** Kyushu University, Japan
- G. Oliveto** Università di Catania, Italy
- R. Olsen** Camp Dresser & McKee Inc., USA
- E. Oñate** Universitat Politecnica de Catalunya, Spain
- K. Onishi** Ibaraki University, Japan
- P. H. Oosthuizen** Queens University, Canada
- E. Outa** Waseda University, Japan
- O. Ozcevik** Istanbul Technical University, Turkey
- A. S. Papageorgiou** Rensselaer Polytechnic Institute, USA
- J. Park** Seoul National University, Korea
- F. Patania** Università di Catania, Italy
- B. C. Patten** University of Georgia, USA
- G. Pelosi** University of Florence, Italy
- G. G. Penelis** Aristotle University of Thessaloniki, Greece
- W. Perrie** Bedford Institute of Oceanography, Canada
- M. F. Platzer** Naval Postgraduate School, USA
- D. Prandle** Proudman Oceanographic Laboratory, UK
- R. Pulselli** University of Siena, Italy
- I. S. Putra** Institute of Technology Bandung, Indonesia
- Y. A. Pykh** Russian Academy of Sciences, Russia
- A. Rabasa** University Miguel Hernandez, Spain
- F. Rachidi** EMC Group, Switzerland
- K. R. Rajagopal** Texas A & M University, USA
- J. Ravnik** University of Maribor, Slovenia

- A. M. Reinhorn** State University of New York at Buffalo, USA
- G. Reniers** Universiteit Antwerpen, Belgium
- A. D. Rey** McGill University, Canada
- D. N. Riahi** University of Illinois at Urbana-Champaign, USA
- B. Ribas** Spanish National Centre for Environmental Health, Spain
- K. Richter** Graz University of Technology, Austria
- S. Rinaldi** Politecnico di Milano, Italy
- F. Robuste** Universitat Politecnica de Catalunya, Spain
- A. C. Rodrigues** Universidade Nova de Lisboa, Portugal
- G. R. Rodríguez** Universidad de Las Palmas de Gran Canaria, Spain
- C. W. Roeder** University of Washington, USA
- J. M. Roesset** Texas A & M University, USA
- W. Roetzel** Universitaet der Bundeswehr Hamburg, Germany
- V. Roje** University of Split, Croatia
- R. Rosset** Laboratoire d'Aerologie, France
- J. L. Rubio** Centro de Investigaciones sobre Desertificacion, Spain
- T. J. Rudolphi** Iowa State University, USA
- S. Russenckuck** Magnet Group, Switzerland
- H. Ryssel** Fraunhofer Institut Integrierte Schaltungen, Germany
- S. G. Saad** American University in Cairo, Egypt
- M. Saiidi** University of Nevada-Reno, USA
- R. San Jose** Technical University of Madrid, Spain
- F. J. Sanchez-Sesma** Instituto Mexicano del Petroleo, Mexico
- B. Sarler** Nova Gorica Polytechnic, Slovenia
- S. A. Savidis** Technische Universitat Berlin, Germany
- A. Savini** Universita de Pavia, Italy
- G. Schleyer** University of Liverpool, UK
- R. Schmidt** RWTH Aachen, Germany
- B. Scholtes** Universitaet of Kassel, Germany
- A. P. S. Selvadurai** McGill University, Canada
- J. J. Sendra** University of Seville, Spain
- S. M. Şener** Istanbul Technical University, Turkey
- J. J. Sharp** Memorial University of Newfoundland, Canada
- Q. Shen** Massachusetts Institute of Technology, USA
- G. C. Sih** Lehigh University, USA
- L. C. Simoes** University of Coimbra, Portugal
- A. C. Singhal** Arizona State University, USA
- J. Sladek** Slovak Academy of Sciences, Slovakia
- V. Sladek** Slovak Academy of Sciences, Slovakia
- A. C. M. Sousa** University of New Brunswick, Canada
- H. Sozer** Illinois Institute of Technology, USA
- P. D. Spanos** Rice University, USA
- T. Speck** Albert-Ludwigs-Universitaet Freiburg, Germany
- C. C. Spyrakos** National Technical University of Athens, Greece
- G. E. Swaters** University of Alberta, Canada
- S. Syngellakis** Wessex Institute, UK
- J. Szmyd** University of Mining and Metallurgy, Poland
- H. Takemiya** Okayama University, Japan
- I. Takewaki** Kyoto University, Japan
- C-L. Tan** Carleton University, Canada
- E. Taniguchi** Kyoto University, Japan
- S. Tanimura** Aichi University of Technology, Japan
- J. L. Tassoulas** University of Texas at Austin, USA
- M. A. P. Taylor** University of South Australia, Australia
- A. Terranova** Politecnico di Milano, Italy
- T. Tirabassi** National Research Council, Italy
- S. Tkachenko** Otto-von-Guericke-University, Germany
- N. Tomii** Chiba Institute of Technology, Japan
- T. Tran-Cong** University of Southern Queensland, Australia
- R. Tremblay** Ecole Polytechnique, Canada
- I. Tsukrov** University of New Hampshire, USA
- R. Turra** CINECA Interuniversity Computing Centre, Italy
- S. G. Tushinski** Moscow State University, Russia
- R. van der Heijden** Radboud University, Netherlands
- R. van Duin** Delft University of Technology, Netherlands
- P. Vas** University of Aberdeen, UK
- R. Verhoeven** Ghent University, Belgium
- A. Viguri** Universitat Jaume I, Spain
- S. P. Walker** Imperial College, UK
- G. Walters** University of Exeter, UK
- B. Weiss** University of Vienna, Austria

T. W. Wu University of Kentucky, USA
S. Yanniotis Agricultural University of Athens,
Greece
A. Yeh University of Hong Kong, China
B. W. Yeigh University of Washington, USA
K. Yoshizato Hiroshima University, Japan
T. X. Yu Hong Kong University of Science &
Technology, Hong Kong

M. Zador Technical University of Budapest,
Hungary
R. Zainal Abidin Infrastructure University Kuala
Lumpur, Malaysia
K. Zakrzewski Politechnika Lodzka, Poland
M. Zamir University of Western Ontario, Canada
G. Zappalà National Research Council, Italy
R. Zarnic University of Ljubljana, Slovenia

Maritime Transportation

Editors

G. Passerini

*Marche Polytechnic University, Italy
Member of WIT Board of Directors*

S. Ricci

University of Rome “La Sapienza”, Italy

WITPRESS Southampton, Boston



Editors:

G. Passerini

Marche Polytechnic University, Italy

Member of WIT Board of Directors

S. Ricci

University of Rome "La Sapienza", Italy

Published by

WIT Press

Ashurst Lodge, Ashurst, Southampton, SO40 7AA, UK

Tel: 44 (0) 238 029 3223; Fax: 44 (0) 238 029 2853

E-Mail: witpress@witpress.com

<http://www.witpress.com>

For USA, Canada and Mexico

Computational Mechanics International Inc

25 Bridge Street, Billerica, MA 01821, USA

Tel: 978 667 5841; Fax: 978 667 7582

E-Mail: infousa@witpress.com

<http://www.witpress.com>

British Library Cataloguing-in-Publication Data

A Catalogue record for this book is available
from the British Library

ISBN: 978-1-78466-347-6

eISBN: 978-1-78466-348-3

ISSN: 1746-4498 (print)

ISSN: 1743-3509 (on-line)

The texts of the papers in this volume were set individually by the authors or under their supervision. Only minor corrections to the text may have been carried out by the publisher.

No responsibility is assumed by the Publisher, the Editors and Authors for any injury and/or damage to persons or property as a matter of products liability, negligence or otherwise, or from any use or operation of any methods, products, instructions or ideas contained in the material herein. The Publisher does not necessarily endorse the ideas held, or views expressed by the Editors or Authors of the material contained in its publications.

© WIT Press 2020

Open Access: All of the papers published in this journal are freely available, without charge, for users to read, download, copy, distribute, print, search, link to the full text, or use for any other lawful purpose, without asking prior permission from the publisher or the author as long as the author/copyright holder is attributed. This is in accordance with the BOAI definition of open access.

Creative Commons content: The CC BY 4.0 licence allows users to copy, distribute and transmit an article, and adapt the article as long as the author is attributed. The CC BY licence permits commercial and non-commercial reuse.

Preface

These Proceedings contain the revised versions of selected papers presented at Maritime Transport 2019 (MT2019), the 1st International Conference on Maritime Transport, held in Rome, Italy, in September 2019. The conference was jointly organized by Wessex Institute (UK) and University of Rome “La Sapienza” (Italy).

One of the key issues of maritime transport is typically characterised by the amplifying effects generated by the big quantities of goods and the dimensions of investments in infrastructures and fleets needed to meet the demand and plan effective freight and passengers transport services.

In this context, the challenge of technological and operational innovation is to setup the most useful solutions to effectively deal with such crucial problem. Nevertheless, economic and political instabilities, in the globalised world, are generating a geographically jeopardized alternation of development and recession, which often requires extreme performances in terms of capacity, speed, energy consumption, environmental and social sustainability, as well as economic efficiency.

Therefore, interdisciplinary researches characterise the key topics related to maritime transport and this fosters the necessity of meeting opportunities for knowledge exchange among concerned researchers and operators. The common interpretations of multidisciplinary researches and operational experiences will be the specific focus of the Conference, where technological, infrastructural, co-modal and sustainable themes will co-habit with reference to both components and the system as a whole.

According to this approach, Maritime Transport is fully open to all involved heterogeneous environments, where basic technical knowledge and scientific research are under development with various purposes, modes and time-frames and will offer a valuable opportunity for a periodic systematic cultural exchange and upgrade.

The Editors wish to acknowledge the authors, the members of the Scientific Committee, the Referees, the Institutional Partners, who supported the Conference, and, in particular, Stephanie Everest, of the Conference Secretariat, who did an outstanding job of coordination together with the WIT Press staff.

The Editors
2019

This page intentionally left blank

Contents

Section 1: Ports and their operation

Ports' structural and operational benchmark: Methodology and application to the Mediterranean basin <i>Cristiano Marinacci, Rosa Alessandra Polo, Stefano Ricci & Luca Rizzetto</i>	3
Management and infrastructures in a maritime coal terminal: A decision-making methodology <i>Cristiano Marinacci, Stefano Ricci, Luca Rizzetto & Maria Eugenia Lopez Lambas</i>	13
Improvement in workability of terminals placed along the inner side of port vertical breakwaters by means of recurved parapet walls <i>Paolo de Girolamo, Myrta Castellino & Alessandro Romano</i>	23
Integrated observing systems supporting Civitavecchia port development <i>Marco Marcelli, Simone Bonamano, Marco Boschi, Calogero Burgio, Valentina Cafaro, Giulia Caporale, Gabriella Caruso, Giorgio Fersini, Alice Madonia, Emanuele Mancini, Daniele Piazzolla, Viviana Piermattei, Sergio Scanu & Guiseppa Zappala</i>	31

Section 2: Routing and automatic control of marine ships

Optimization approach to the guidance and control of marine vehicles <i>Evgeny I. Veremey & Margarita Sotnikova</i>	45
Improving the performance of weather routing algorithms <i>Maxim V. Korovkin & Sergei V. Pogozhev</i>	57
DREM-based online identification of a surface vessel dynamic model <i>Anastasiia O. VEDIKOVA & Alexey A. VEDYAKOV</i>	65
Marine ships' control fault detection based on discrete H_2 -optimization <i>Evgeny I. Veremey & Yaroslav V. Knyazkin</i>	73

Stability analysis of ships' movement along optimal routes <i>Irina V. Aleksandrova & Alexey P. Zhabko</i>	83
---	----

Section 3: Responsible and sustainable port innovation and development along the 21st century Maritime Silk Road

Cultivating a friendly attitude: The Master's program of "One Belt One Road", a think-tank for international students at Harbin Institute of Technology <i>Wei Dai, Wim Ravesteijn & Jianing Mi</i>	97
--	----

Chinese road to responsible innovation: Constructing a green port in Dalian <i>Ping Yan & Wim Ravesteijn</i>	109
---	-----

Sustainable port development based on the Blue Economy framework in China: The example of Qingdao port <i>Yan Zhang & Wim Ravesteijn</i>	121
---	-----

Section 4: Ports of the future – Sustainable intelligent ports for smart and autonomous ships and logistics

Just-In-Time rail shuttle service feasibility study for the port of Valencia <i>Lorena Sáez-Carramolino, Alex Sánchez-Pérez, Carles Pérez-Cervera & Salvador Furió-Pruñonosa</i>	135
---	-----

Small and medium ports' activities modelling: Introduction to the PIXEL approach <i>Erwan Simon, Charles Garnier, Ignacio Lacalle, Joao Pita Costa & Carlos E. Palau</i>	149
---	-----

Section 5: Pollution and the protection of the marine environment

Cost effective marine exhaust abatement for NO _x , SO _x and soot <i>Robert G. Richardson</i>	167
---	-----

Preliminary cost-effectiveness analysis of the measures put in place by EU Member States to implement the directive on reduction of sulphur content in fuels used by ships <i>Francesco Rotoli, Guido Calcagno, Sergio Alda, Mercedes Garcia Horrillo, Stefano Ricci & Luca Rizzetto</i>	175
---	-----

Maritime environmental performance indices: Useful tools for evaluating transport supplier environmental performance? <i>Anastasia Christodoulou</i>	187
---	-----

Air pollution in Ancona harbour, Italy <i>Lorenzo Fileni, Enrico Mancinelli, Mauro Morichetti, Giorgio Passerini, Umberto Rizza & Simone Virgili</i>	199
---	-----

Section 6: Maritime education and training

Using the Solar Splash competition to train the new generation of maritime engineers in solar power use <i>Peter Vorobieff & Jane Lehr</i>	211
--	-----

Maritime education in the age of autonomy <i>Robert Kidd & Elizabeth McCarthy</i>	221
--	-----

Section 7: Planning and management

Advantages of pre-clearance procedures in maritime transport <i>Mauro Bernacchi & Alessandro Torello</i>	233
---	-----

Global soybean trade, supply chain and tariffs <i>Changqian Guan, Shmuel (Sam) Yahalom, Luke Germanakos, Samuel LaPage & Brenden McKeever</i>	239
--	-----

Nautical tourism and regional population: The Italian case <i>Francesco Russo & Corrado Rindone</i>	251
--	-----

Author index	265
---------------------------	-----

This page intentionally left blank

SECTION 1
PORTS AND THEIR
OPERATION

This page intentionally left blank

PORTS' STRUCTURAL AND OPERATIONAL BENCHMARK: METHODOLOGY AND APPLICATION TO THE MEDITERRANEAN BASIN

CRISTIANO MARINACCI, ROSA ALESSANDRA POLO, STEFANO RICCI & LUCA RIZZETTO
Sapienza University of Rome – DICEA, Italy

ABSTRACT

Starting from morphology and equipment, a synthetic method able to provide indicators representing the ports' performances was setup. The knowledge background, built on cartography, statistical data, port master plans and sectorial researches, required important efforts in terms of integration and homogenisation. The method's development is based on a survey of the Mediterranean basin, progressively identifying a sample of ports by additive selection criteria, including geographical location, the layout's morphology, traffic typologies and consistent data availability. A set of indicators characterising the ports' performances allows benchmarking and matching to derive useful design and operational feedback. The achieved results include homogeneous indicators for dimensions, equipment and performances, useful for design and planning purposes, operational checks, identification of bottlenecks and project needs. The extension of the sample (39 case studies in the Mediterranean basin) encompasses the values of results, exposed in thematic maps and diagrams dealing with wharfs' extension vs. sea depth and basin surface, average length of route, the docks' density, ship turnover rates, productivity index, docks utilisation and approaching time. Moreover, the global operational capacity and the related present utilisation rate was calculated, taking into account the internal routes' network, compatibility among routes, manoeuvring times and distribution of traffic by route.

Keywords: transport, navigation, port, operation, capacity, benchmark, Mediterranean.

1 INTRODUCTION

In an International scenario where production and distribution are worldwide globally integrated, the maritime sector is increasingly playing the role of key ring of the integrated logistic chain [1].

In such a competitive environment, the ports are required to systematically monitor their activities, check their performances and their ability to satisfy the market demand.

Nevertheless, the rich and diversified literature is mainly concentrated on economic aspects, volumes of traffic and effectiveness of loads handling, with minor focus on effects of geography (positive or negative dynamics of locations) and seaside operation (traffic congestion and possible fluidisation measures).

The expansion of maritime flows is today not characterised by a parallel enlargement of the amount of called ports.

Indeed, the big ship-owners companies base their success mainly on economy of scale factors, achieved by the increase of ships' dimensions and the selection of a limited set of ports equipped to host them (length and draught) and manage in the fastest way their loading and unloading.

Meanwhile, in such rigid constraints, the effective management of seaside operation, which is required to prevent congestion and avoid any kind of unproductive time, also plays a key role.

In this framework, the objective of the present research is to identify and propose a systematic quantitative approach to assess and benchmark structural and operational features of ports affecting their service capacity towards ships.



The systematic evaluation of this capacity represents a primary parameter, both for design and operation of ports and allows identifying possible bottlenecks and effects in terms of delays and economic consequences of congestion.

The main investigated questions are:

Geographical and morphological factors influencing the port operation (e.g. effects of layouts on operational time);

Mechanisms to manage the operation influencing the delays generation.

In this respect, the choice to approach the problem with a typically bottom-up method, required to collect a large and as much as possible homogeneous set of data.

For Europe, maritime transport has been a catalyst for economic development and prosperity throughout its history.

Maritime transport enables trade and contacts between all European and world nations: it ensures the security of supply of energy, food and commodities and provides the main vehicle for European imports and exports to the rest of the world.

One of the European Commission's objectives is to protect Europe with very strict safety rules preventing sub-standard shipping, reducing the risk of serious maritime accidents and minimising the health and environmental impact of maritime transport.

The European Commission's strategic goals and recommendations for the EU had been set out in 2009 in the Maritime Transport Policy until 2018.

2 DATA COLLECTION TOWARDS AN OPERATIONAL PORTS' ATLAS

Starting from morphology and equipment, a synthetic method able to provide with indicators representing the ports' performances was setup.

The collection included data about:

- A. Layout and geometrical features: typologies and distribution of basins, extension of waters, length and specialisation of quays, water's depth, number and dimension of evolution's basins, width of internal and external channels, availability of nautical services;
- B. Traffic: yearly, monthly and daily data;
- C. Nautical accessibility: yearly period in which the seaside accessibility is free, despite of waves, streams, tides, wind or ports schedule itself;
- D. Port rules and regulations: normative for entering and priority, allowed speed, separation scheme and general safety rules.

The database includes the entire Mediterranean basin, encountering mainly homogeneity problems due to typical regional features of many ports.

The main rationales of the database building are the following:

- A. The layout and geometrical features allow to fill in a port's descriptive sheet (ports atlas), including main characteristics useful to comparison and benchmarking, as well as to feed the capacity models.
- B. The yearly traffic by categories provides with an estimation of the global activity of the port, the monthly traffic lets emerge the possible seasonal trends, as well as the daily ships' planning is the key information to estimate the capacity and its rate of occupancy.
- C. The nautical accessibility allows calculating the expected delays for ships during temporary port operation suspensions.

- D. The port rules and regulations are mainly useful to take into account traffic priorities:
- a. Departures before arrivals,
 - b. Military ships before RO-PAX and cargo.

Moreover, depending upon features of basins and ships themselves, the speed must be not too high to avoid collisions during manoeuvres, but not too low to let the rudder ensure the highest manoeuvrability.

Finally, the separation schemes prevent conflicts during manoeuvres, particularly under severe weather conditions.

The data sources include cartography, statistical data, port master plans, sectorial researches, required important efforts in terms of integration and homogenisation.

The method, validated by a survey extended to the Mediterranean basin, progressively identified by additive selection criteria, setup a set of indicators characterising ports' performances, benchmarked and matched each other to derive useful design and operational feedback.

The investigations collected information from the following sources:

- Port authorities;
- Harbourmasters;
- Governmental bodies;
- Statistical institutes;
- Geographical institutes;
- European Union;
- Other studies and researches [2]–[4].

The Mediterranean Sea is a closed basin, with a wide variation of latitude and gates at Suez and Gibraltar, merging three continents and 20 countries, with various socio-economic conditions but a common market.

Therefore, the sample for the investigation results strongly variegated and initially composed by 51 ports over 16 countries, later reduced, due to data availability constraints, to 37 ports over 15 countries only (Fig. 1).



Figure 1: Final sample of investigated ports (highlighted in pink) and set of ports excluded due to data unavailability (highlighted in blue).

For each port, the data has been homogenised and synthetically stored in sheets, including maps, tables and diagrams: an example for the port of Marseille is in Figs 2 and 3 and Table 1. Similar outputs are available for all the investigated ports.



Figure 2: Port of Marseille: layout.

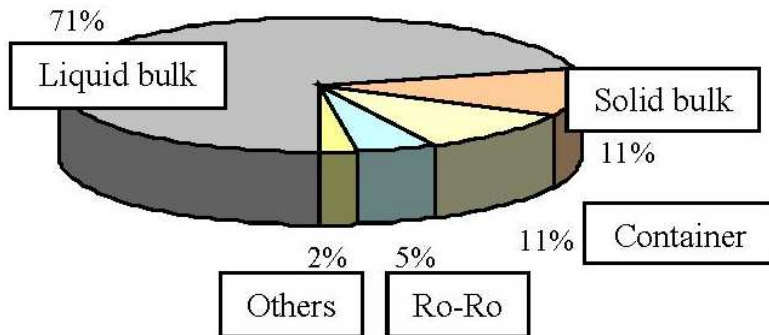


Figure 3: Port of Marseille: traffic distribution.

Table 1: Port of Marseille: characteristics of quays.

Basin	Quay	Min Depth [m]	Max Depth [m]	Length
Gourret	002-008	9,60	11,00	903
Wilson	009-025	9,00	11,00	2034
Pinede	026-040	8,00	10,30	1388
National	041-048	6,00	9,00	110
Sud Roro	050-058	7,20	9,00	943
Arenc	059-068	6,10	7,80	905
Grande Joliette	069-096	6,90	7,90	2943
Digue du Large	109-131	3,50	11,00	3977
Avamport Nord	143-148	4,00	10,00	1121
Mirabeau	150-163	8,90	14,40	1741
Leon Gourret	181-186	12,90	13,00	970
Radoub	F01-F09	4,50	11,70	1882
Radoub	QFAB-QMD3	4,40	5,00	253

3 METHODOLOGICAL APPROACH

The method applied for the analysis includes the calculation of synthetic indicators, expressive of present and potential performances of the ports and useful to organise an effective benchmarking among them.

In the literature a large set of studies dealt with the selection of the most effective set of indicators for ports benchmarking both for operational [5]–[7] and economic [8]–[10] performances.

The indicators proposed in the present study, differentiate themselves from the state-of-the-art, aiming to represent synthetically a large set of operational ports performances; therefore, they articulate into the levels defined below.

Level 1: primary indicators representing the key port's performances:

- A. Length of quays,
- B. Number of quays,
- C. Surface of port's basin,
- D. Water's depth,
- E. Ships' movement in the reference year,
- F. Length of approaching channel,
- G. Maximum speed allowed along the approaching channel,
- H. Average length of internal routes,
- I. Volume of handled goods in the reference year;

Level 2: secondary indicators, calculated basing on primary indicators, finalised to benchmarking and other comparative analyses:

- A. Length of quays by classes of water's depth;
- B. Use of quays: yearly ships' movements / length of quays;
- C. Density of quays: number of quays/surfaces of port's basin;
- D. Extension of quays: length of quays / surface of port's basin;
- E. Exchange rate: yearly ships' movements / number of quays;
- F. Port's productivity: yearly volume of handled goods /length of quays;
- G. Approaching time to port mouth: length of approaching channel / maximum speed allowed along the approaching channel;
- H. Extension of internal routes: average length of internal routes / surface of port's basin.

In addition to the indicators above, a specific focus is on the seaside operation; with the research of the maximum ships' flow (capacity) compatible with safety rules and the present utilisation degree.

The method [11], [12] is based on the assessment of the shared resources generating potential conflicts and corresponding queuing processes, to manage in order to ensure a reasonable quality of service.

In the framework of the large literature dealing with ports capacity, the chosen method is able to manage dynamic capacity calculation taking into account of movements directed/generated to/by all terminals and docks, whereas the most consolidated methods and simulation models, mainly deal with static capacity of single terminals and/or docks' occupancy [13], [14].

In this respect, critical standards and features are mainly the separation rules along the approaching routes and the port's basin morphology, managed by the method in terms of compatibility among movements conditioning the capacity itself.



The model is basing on the seaside schematisation of ships routes from port mouth to quays and back, which may be partially or completely independent.

Therefore, the intermodal equipment and the single terminal operation is not relevant for the global approach, which is willing to assess capacity and utilisation in a global and synthetic approach.

Indeed, the main factors affecting the capacity are the time distribution of entering and exiting movements to/from the port and related assignment to quays as well as the basin's topology defined by quays and mouth location.

To achieve high generality, the model approach is basing on a constant probability for the arrivals: the number of movements per route is representing the demand.

This condition is equivalent to an array P , with dimensions corresponding to the number of the routes in the terminal and single elements p_i defining the number of movements on each route in the reference time T .

The analysis of the terminal morphology allows defining routes and their reciprocal compatibility/incompatibility represented in a square matrix (compatibility matrix) $C = P \times P$, with each element c_{ij} representing that condition.

The possible relationships are:

Incompatibility between two routes due to:

- Common final/initial sections,
- Common middle sections,
- Same path but opposite versus;

Compatibility between two routes without common sections, where ships can run simultaneously.

The proposed approach allows calculating the average number of possible simultaneous movements \bar{n} by taking into account the compatibility of the routes and their frequency of utilisation:

$$\bar{n} = \frac{N^2}{\sum_{ij} m_{ij}}, \quad (1)$$

where:

$m_{ij} = p_i \times p_j$ if i and j are incompatible;

$m_{ij} = 0$ if i and j are compatible.

In a similar way, the average utilisation time of the terminal is:

$$\bar{t} = \frac{\sum_{ij} m_{ij} t_{ij}}{\sum_{ij} m_{ij}}. \quad (2)$$

where t_{ij} is the time during which the route j may not be run because a ship is moving on the route i (interdiction time) and N is the total number of movements during T .

The total occupation time is:

$$B = \frac{N}{\bar{n}} \bar{t}. \quad (3)$$

In order to take into account the waiting situations due to simultaneous arrivals on incompatible routes, it is possible to calculate the delay imposed by the p_i movements on the p_j movements because of the interdiction time t_{ij} :

$$r_{ij} = \frac{p_i p_j t_{ij}^2}{2 T} \quad (4)$$

These parameters allow the comparison between the total port's utilisation time, including the delays, and the reference time.

The utilisation rate with reference to the regular running on the routes only is:

$$U_R = \frac{B}{T} \quad (5)$$

Alternatively, to the total time, including the delays, as:

$$U_T = \frac{B+R}{T} \quad (6)$$

where:

$$R = \sum_{i,j} R_{ij} \quad (7)$$

Such method is well representing both:

- High frequency of arrivals in the peak periods;
- Typical database in the planning phase, when detailed information on future ships scheduling cannot be available.

4 RESULTS AND FINDINGS

4.1 Rationale

The achieved results include homogeneous indicators for dimensions, equipment and performances, highly reliable thanks to the extension of the sample (39 case studies):

- For design and planning purposes;
- For operational check, identification of bottlenecks and project needs.

Moreover, the global operational capacity and the related present utilisation rate is calculated taking into account internal routes' network, compatibility among routes, manoeuvring times, distribution of traffic by route.

4.2 Primary indicators

The primary indicators are summarised in comparative diagrams: an example is in Fig. 4 with reference to the length of the quays.

The extension of basins is synthetically represented in Fig. 5, reflecting the classification into dimensional classes, with 11% only associated to the largest one (over 500 ha).

Finally, the entity of seaside traffic volumes allows the classification of ports into clusters, with 11% of them managing more than 10,000 movements/years (Fig. 6).

10 Maritime Transport

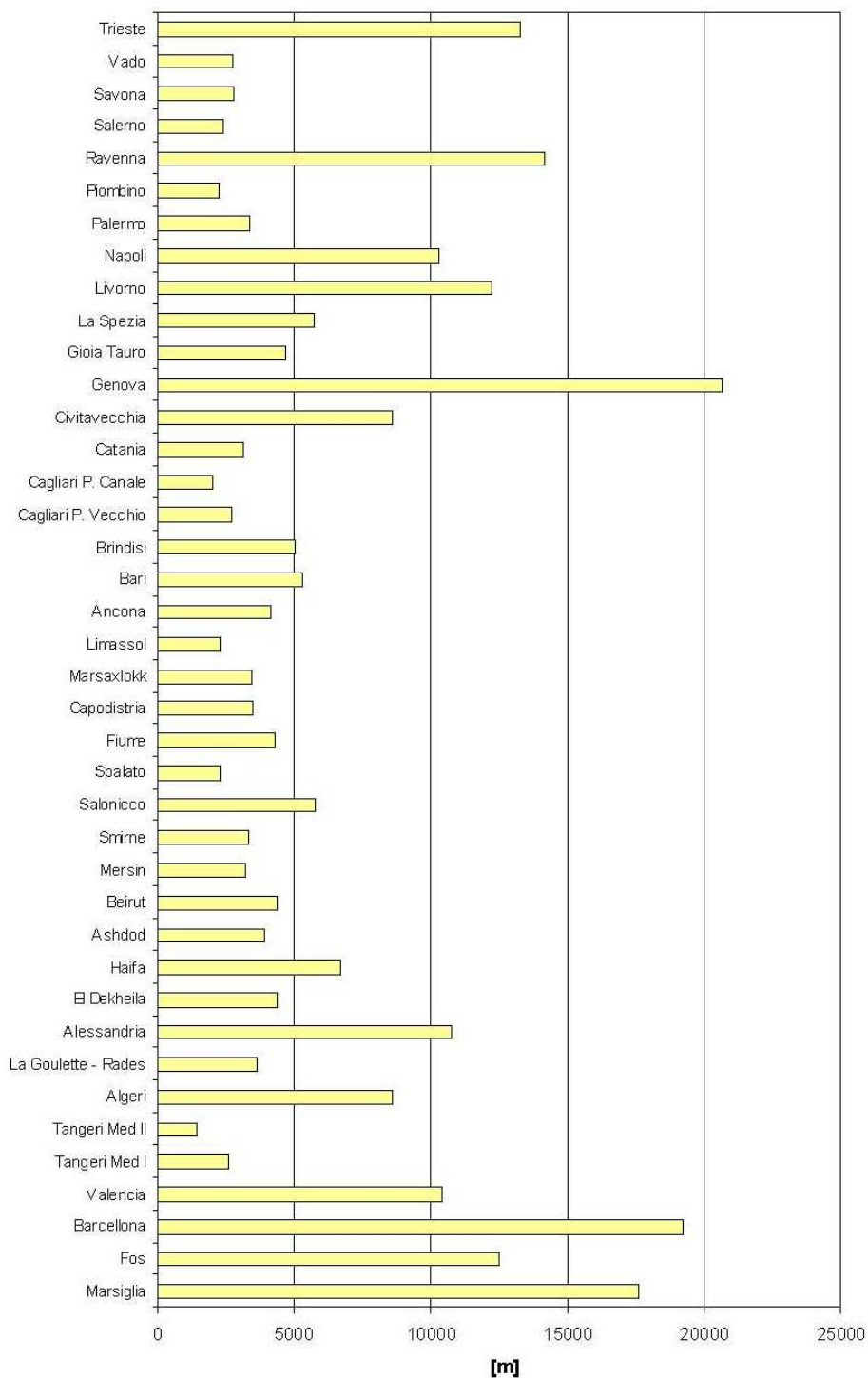


Figure 4: Benchmarking of ports by length of quays (Indicator Level 1 – A).



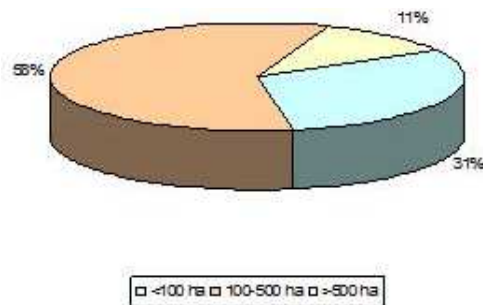


Figure 5: Classification of ports' basins by dimension (ha) (Indicator Level 1 – C).

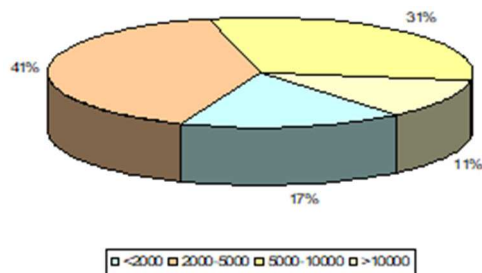


Figure 6: Classification of ports' basins by ship movements (movements/year) (Indicator Level 1 – E).

5 CONCLUSIONS

The methodology setup in the study demonstrates to be able to provide a quantitative assessment of morphological and dimensional aspects of ports, to enrich the most frequently used purely stochastic parameters as handled tonnes or number of TEUs.

Indeed the infrastructural features combined with the offered technical services (pilotage, manoeuvres, etc.) are essential to express reliable indicators of seaside port capacity.

Moreover, the research work succeeded to reach the following relevant objectives:

- Homogeneity of database ensuring good comparative attitude of the methodology;
- Extension of the database ensuring the statistical correlation of indicators and average relationships between characteristic parameters;
- Dual possibility to apply the method both to design new ports (dimensions, equipment, etc.) as well as to assess the performances of existing infrastructures (residual capacity, bottlenecks, etc.);
- Capability to provide synthetic, though reliable, results with a limited amount of input data;
- Possibility to assess globally the performances of a system of ports for potential distribution and re-allocation of traffic.

REFERENCES

- [1] UNCTAD, *Review of Maritime Transport*, United Nations Publication: New York and Geneva, 2013.

- [2] Lupi, M., Danesi, A., Farina, A. & Pratelli, A., *Maritime Container Transport in Italy. Study on Deep and Short Sea Shipping Routes Departing from the Main Italian Ports and on Rail Modal Shares*. IF-Ingegneria Ferroviaria, 5, pp. 409–446, 2012.
- [3] National Geospatial-Intelligence Agency, *PUB. 131. Sailing Directions (ENROUTE) – Western Mediterranean*. United States Government: Springfield, 2014.
- [4] National Geospatial-Intelligence Agency, *PUB. 131. Sailing Directions (ENROUTE) – Western Mediterranean*. United States Government: Springfield, 2015.
- [5] Dragovic, B., Park, N.K. & Radmilovic, Z., Ship-berth link performance evaluation – Simulation and analytical approaches. *Maritime Policy and Management*, **33**(3), pp. 281–299, 2006.
- [6] Kek, C.C., *Port Performance Indicators*, Transportation, Water and Urban Development Department, The World Bank, Transport No. PS-6, 1993.
- [7] Ricci, S., Marinacci, C. & Rizzetto L., The modelling support to maritime terminals sea operation: The case study of port of Messina. *Journal of Maritime Research*, **9**(3), pp. 39–43, 2012.
- [8] Amr, M. & Amr, A., Seaport management aspects and perspectives: An overview. *Proceedings of the 12th Annual Irish Academy of Management Conference*, Galway-Mayo Institute of Technology, Galway, Ireland, 2009.
- [9] Cullinane, K. & Talley, W.K., Port economics. *Research in Transportation Economics*, **16**, pp. 1–249, 2006.
- [10] Marlow, P.B., Measuring lean ports performance. *International Journal of Transport Management*, **1**, pp. 189–202, 2003.
- [11] Malavasi, G. & Ricci, S., The seaside port capacity: A synthetic evaluation model. *Maritime Heritage and Modern Ports*, I. Marcet, R. Barbe, C. Brebbia & J. Olivella (eds) *WIT Transactions on the Built Environment*, vol. 79, WIT Press: Southampton and Boston, pp. 471–480, 2005.
- [12] Marinacci, C., Quattrini, A. & Ricci, S., Integrated design process of maritime terminals assisted by simulation models. *International Conference on Harbour, Maritime and Multimodal Logistics Modelling and Simulation*, **1**, pp. 190–201, 2008.
- [13] Kia, M., Shayan, E. & Ghotb, F., Investigation of port capacity under a new approach by computer simulation. *Computers and Industrial Engineering*, **42**, pp. 533–540, 2002.
- [14] Munisamy, S., Timber terminal capacity planning through queuing theory. *Maritime Economics & Logistics*, **12**, pp. 147–161, 2010.

