

June 26, 2019 | Research | No comments

Hearing loss in autoimmune disorders

Autoimmune sensorineural hearing loss (SNHL) is a rare clinical entity accounting for less than 1% of all cases of hearing loss; however, this could be an underestimation based on the absence of specific diagnostic tests and the complexity of differential diagnosis. The disease could be localized only in the ear or hearing loss could be a symptom of a systemic autoimmune disease.

The definition of autoimmune SNHL varied over decades. Malik et al. proposed the term "immune-mediated inner ear disease" (IMIED) for all cases, distinguishing between "organ-specific" (OS-IMIED) and "systemic" (S-IMIED) forms, on the light of the consideration that some organ specific disorders might be only the initial manifestation of a more systemic disease.

The incidence is controversial. The audio-vestibular involvement in several systemic autoimmune disorders has been reported by various authors. However, incidence of involvement of the inner ear in S-IMIED has been described rarely, whilst prevalence was reported more frequently (Fig. 1 and 2).

The management of IMIED is aimed at hearing preservation. Pharmacological treatment is limited mainly to high-dose corticosteroids with prolonged taper and low-dose maintenance therapy. Although an initial clinical response to steroids has helped to define the diagnosis, for those with progressive hearing loss requiring corticosteroid treatment, only 14% remain responsive after 34 months. Moreover steroid-associated side-effects occur in 15% of patients during the first month of treatment and 6% have to discontinue steroid therapy.

Several strategies have been proposed to overcome this problem, such as shorter steroid regimes that might be associated with a higher rate of relapse, or intratympanic steroid injections. For the future, the

inner ear appear to be a potential target for modulating the immune response in the inner ear in the pathophysiology of SNHL.

However, some patients prefer to avoid or cannot tolerate the side effects of medical therapy. Besides medical therapy in subjects where hearing loss ranges between mild to severe (25–70 dB) rehabilitation with hearing aids could be attempted. There are no studies regarding the application of hearing aids in OS-IMIED and S-IMIED. The main difficulty of hearing aids application in IMIED is represented, in a first stage, by the fluctuation of hearing loss and in any degree of hearing loss by distortion of perception linked to cochlear damage.

In patients who develop severe/profound SNHL and who no longer benefit from hearing aid amplification, cochlear implantation is indicated. Although patients affected by immune-mediated profound SNHL represent ideal candidates for cochlear implantation, as these patients become deaf after years of hearing, the associated systemic disease, the specific damage on inner ear structures and the medication taken may influence the result of cochlear implantation.

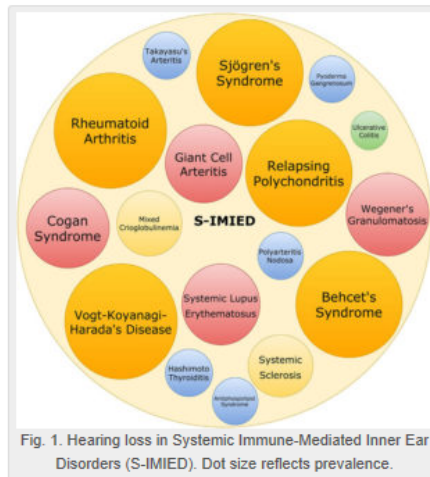


Fig. 1. Hearing loss in Systemic Immune-Mediated Inner Ear Disorders (S-IMIED). Dot size reflects prevalence.

TOP KEYWORDS

Diabetes | Alzheimer's disease
Cancer | Breast cancer | Tumor
Blood pressure | Heart
Brain | Kidney | Liver | Lung
Stress | Pain | Therapy
Infection | Inflammation | Injury
DNA | RNA | Receptor | Nanoparticles
Bacteria | Virus | Plant

See more ...

Popular



The woody breast condition affects texture characteristics of both raw and cooked chicken breast meat
April 11, 2017



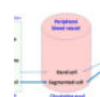
Comparison of biological and cultural evolution
January 7, 2016



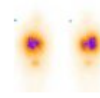
Finding aroma clues in the human breath to diagnose diseases
February 29, 2016



Morgellons disease: the search for a perpetrator
January 18, 2016



Bacterial infection can be diagnosed and the severity evaluated using WBC count and left shift
October 31, 2016

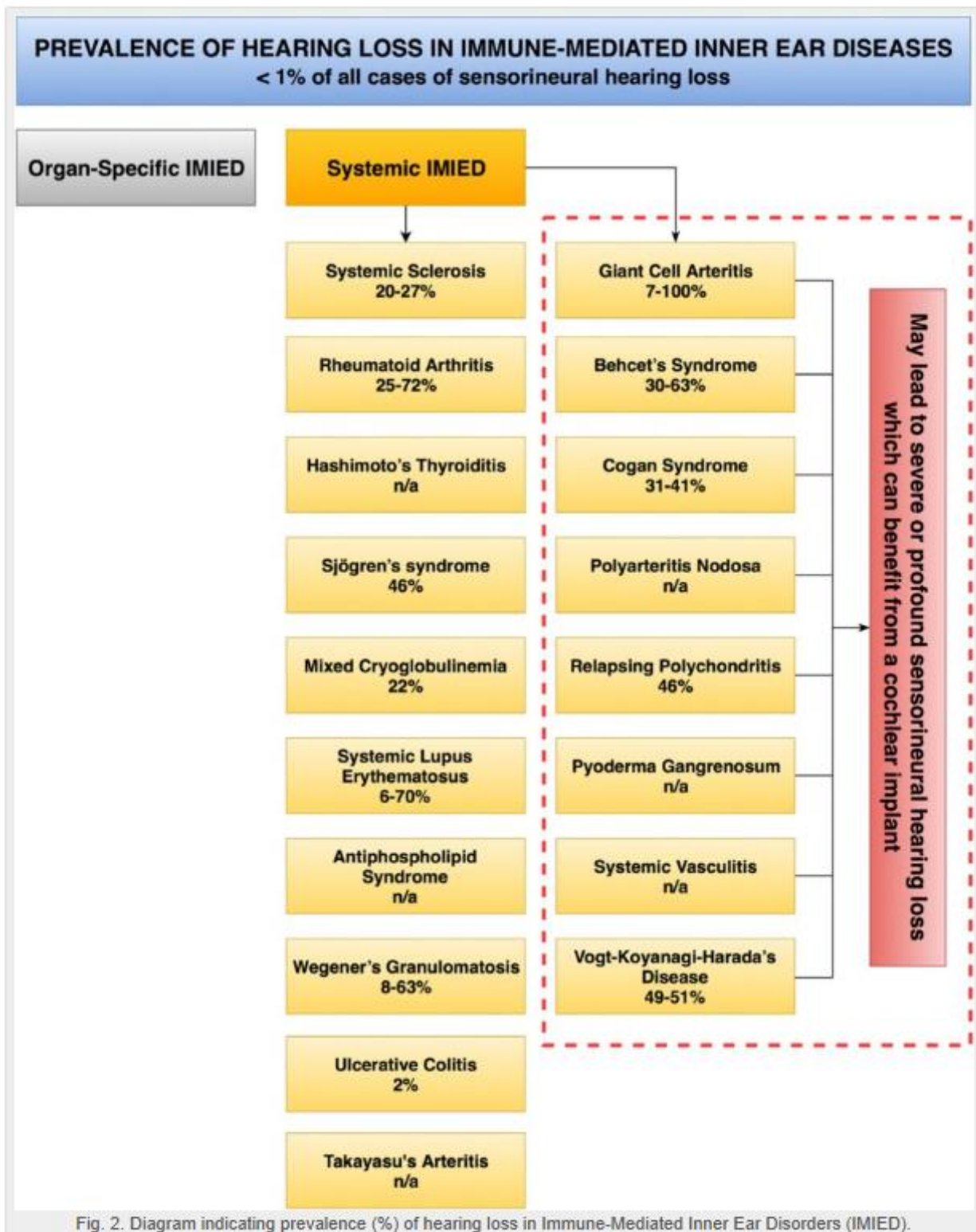


Lutetium-177 radioisotope targeted therapy for treatment of cancer and other diseases
February 12, 2016



Vodka and wine consumption: good for your liver?
January 12, 2017

may influence the result of cochlear implantation.



Excellent results and good performance in implanted IMIED patients have been reported, compared with patients with other causes of deafness. Interestingly, regardless of the etiology of the various diseases affecting the inner ear, pathological findings are identical: they include degeneration and destruction of the peripheral receptor; segmental and diffuse infiltration of lymphocytes, plasma cells, and macrophages; proliferation of fibrous tissue; and varying degrees of ossification of the inner ear. Cochlear fibrosis or ossification has been found to affect up to 50% of implanted ears, mainly caused by segmental and diffuse infiltration of lymphocytes, plasma cells, and macrophages, and proliferation of fibrous tissue. Early diagnosis and immediate therapeutic approach, could give better results. In case of severe/profound deafness an earlier implantation may be indicated before post-inflammatory obliterative changes in the cochlea.

*Mancini P, Atturo F, Di Mario A, Portanova G, Ralli M, De Virgilio A, de Vincentiis M, Greco A
Department of Sense Organs, Sapienza University of Rome, Rome, Italy*

Publication

Hearing loss in autoimmune disorders: Prevalence and therapeutic options.

Mancini P, Atturo F, Di Mario A, Portanova G, Ralli M, De Virgilio A, de Vincentiis M, Greco A
Autoimmun Rev. 2018 Jul