

Journal section: Operative Dentistry and Endodontics  
 Publication Types: Reserach

doi:10.4317/jced.55487  
<http://dx.doi.org/10.4317/jced.55487>

## A comparative study of mechanical resistance of two reciprocating files

Dario Di Nardo <sup>1</sup>, Massimo Galli <sup>2</sup>, Antonio Morese <sup>3</sup>, Marco Seracchiani <sup>3</sup>, Valerio Ferri <sup>3</sup>, Gabriele Miccoli <sup>4</sup>, Gianluca Gambarini <sup>2</sup>, Luca Testarelli <sup>1</sup>

<sup>1</sup> DDS, PhD. Department of Oral and Maxillo-Facial Sciences, Sapienza University of Rome, Italy

<sup>2</sup> MD. Department of Oral and Maxillo-Facial Sciences, Sapienza University of Rome, Italy

<sup>3</sup> DDS. Department of Oral and Maxillo-Facial Sciences, Sapienza University of Rome, Italy

<sup>4</sup> DDS, PhD student. Department of Oral and Maxillo-Facial Sciences, Sapienza University of Rome, Italy

### Correspondence:

Department of Oral and Maxillo-Facial Sciences  
 Sapienza University of Rome  
 Via Caserta, 6 – 00161 Rome, Italy  
[dario.dinardo@uniroma1.it](mailto:dario.dinardo@uniroma1.it)

Di Nardo D, Galli M, Morese A, Seracchiani M, Ferri V, Miccoli G, Gambarini G, Testarelli L. A comparative study of mechanical resistance of two reciprocating files. J Clin Exp Dent. 2019;11(3):e231-5.  
<http://www.medicinaoral.com/odo/volumenes/v11i3/jcedv11i3p231.pdf>

Received: 06/12/2018  
 Accepted: 04/02/2019

Article Number: 55487 <http://www.medicinaoral.com/odo/indice.htm>  
 © Medicina Oral S. L. C.I.F. B 96689336 - eISSN: 1989-5488  
 eMail: [jced@jced.es](mailto:jced@jced.es)

**Indexed in:**  
 Pubmed  
 Pubmed Central® (PMC)  
 Scopus  
 DOI® System

### Abstract

**Background:** To evaluate the cyclic fatigue resistance of two different Nickel-Titanium instruments, ReziFlow (Komet, Brasseler GmbH & Co., Lemgo, Germany) and WaveOne Gold (Dentsply Maillefer, Ballaigues, Switzerland). **Material and Methods:** Two groups of 20 different NiTi endodontic instruments of identical tip size of 0.25 mm were tested; ReziFlow and Wave-One Gold primary. Cyclic fatigue testing was performed in a stainless steel simulated root canal manufactured by reproducing the instrument's size and taper. A simulated root canal with a 90 degrees angle of curvature and 5 mm radius of curvature was constructed for the instruments tested. The centre of the curvature was 5 mm from the tip of the instrument and the curved segment of the canal was approximately 5 mm in length. Both the instruments were used in the same preset program specific for the WaveOne instruments. Each instrument was rotated until fracture occurred and the time to fracture (TtF) and the length of the fractured fragment were recorded. Means and standard deviations of TtF and fragment length were calculated and data were subjected to statistical analysis ( $P < 0.05$ ).

**Results:** Statistically significant differences ( $P < 0.05$ ) were noted between ReziFlow and WaveOne Gold instruments. There were no significant differences ( $P > 0.05$ ) in the mean length of the fractured fragments between the instruments.

**Conclusions:** ReziFlow instruments were associated with a significantly higher cyclic fatigue resistance than WaveOne Gold instruments.

**Key words:** Endodontic instruments, NiTi alloy, Reciprocating motion, Cyclic Fatigue, Heat treatment.

### Introduction

Since the early 1990, the introduction of nickel-titanium (NiTi) alloy for the endodontic treatment has improved the shaping procedures in the root canal preparation, ma-

king it easier and faster (1-3). Unfortunately, despite the superior mechanical properties of the NiTi alloy, the risk of intracanal separation of the instruments increased due to the continuous rotation and higher speed used (4-11).

The multifactorial origin of the NiTi instruments separation has been demonstrated in various clinical and experimental studies. According to these studies, cyclic fatigue is one of the most relevant cause of intracanal instruments breakage (12-14). Starting from the manufacturing process, each instrument shows some irregularities and defects and their distribution influences the fracture resistance of the resulting product (15). Indeed the fatigue failure begins with the formation of surface microcracks which seems to arise from the described irregularities. The microcracks deepening, as a result of each loading cycle, leads to the complete instrument separation (16-18).

In the last years, clinicians and manufacturers tried to find different ways to reduce the risk of intracanal separation, making the instruments more resistant to both flexural and torsional stress. To reach this aim, the development has followed mostly three different ways: the changing in the instruments design, the heat treatments of the alloy and the use of different kind of motions (19-23). Reciprocating motions has grown in popularity in the last ten years and many researches were published in the last years (24,25). All studies clearly demonstrate that reciprocation motion has a significant influence on cyclic fatigue resistance, comparing the same instruments in reciprocating and continuous motion (26,27). Reziflow (Komet, Brasseler GmbH & Co., Lemgo, Germany) are new traditional NiTi instruments, with an S-shaped cross sectional design. thought to be used in counter-clock wise (CCW) reciprocating motion.

Wave-One Gold (WOG) (Dentsply Maillefer, Ballaigues, Switzerland), instruments are heat treated NiTi alloy instruments with two different cross-section, a modified convex triangular cross-section at the tip and a convex triangular cross-section in the middle and coronal portion, born to be used in counter-clock wise (CCW) reciprocating motion.

To date there are no studies comparing the resistance of WOG and Reziflow instruments to cyclic fatigue in a stainless steel artificial canal. Therefore the aim of this study is to compare the resistance to cyclic fatigue of WOG and Reziflow instruments in an artificial canal with a 90° curvature and a radius of 5 millimeters. The null hypothesis was that there are no differences between the two tested instruments in cyclic fatigue lifespan.

## Material and Methods

A total of 40 new NiTi instruments 25 mm in length were tested in this study: 20 Wave One Gold Primary, tip size 25 and variable taper (Dentsply Maillefer, Ballaigues, Switzerland) and 20 Reziflow (Komet, Brasseler GmbH & Co., Lemgo, Germany) tip size 25 and taper 06. All instruments were of the same length and used in the same reciprocating motion, the only difference was in the three-dimensional design. All of them had been

previously inspected for morphological defects or any visible signs of deformations using a stereomicroscope at x20 magnification. None of them were discarded. Both the instruments were used in the same preset program specific for the WaveOne Gold instruments, because Reziflow has no preset motion and manufacturer declare its adaptability to preexisting CCW reciprocating motion.

In the present study, it was used a cyclic fatigue testing device already featured in previous studies (28,29). The device consists of a main platform to which is connected the electric handpiece and a stainless-steel block containing the artificial canals. The electric handpiece was mounted on a mobile device to allow for precise and reproducible placement of each instrument inside the stainless steel canal, ensuring that each instrument reached the same depth (18 mm). The same artificial root canal with a 90 degrees angle of curvature and 5 mm radius of curvature was used for all the tested instruments. Moreover the whole procedure has been performed by the same operator, to keep as low as possible the variability during the testing procedure.

All instruments were inserted at the same length (18mm) and then rotated in reciprocating motion until fracture occurred. For each instrument, the time was stopped as soon as the fracture was detectable and registered with a 1/100 sec chronometer. Time to fracture for each instrument was recorded (TtF).

Fragments were collected, measured by using a digital caliber and subject to optical microscopic analysis (Figs. 1,2).

The data were collected and mean and standard deviation were calculated. Differences among groups were statistically evaluated with an analysis of variance test ANOVA (significance level was set at  $P < 0.05$ ). Data were statistically analyzed using the SPSS 17.0 software (SPSS Incorporated, Chicago, IL, USA).

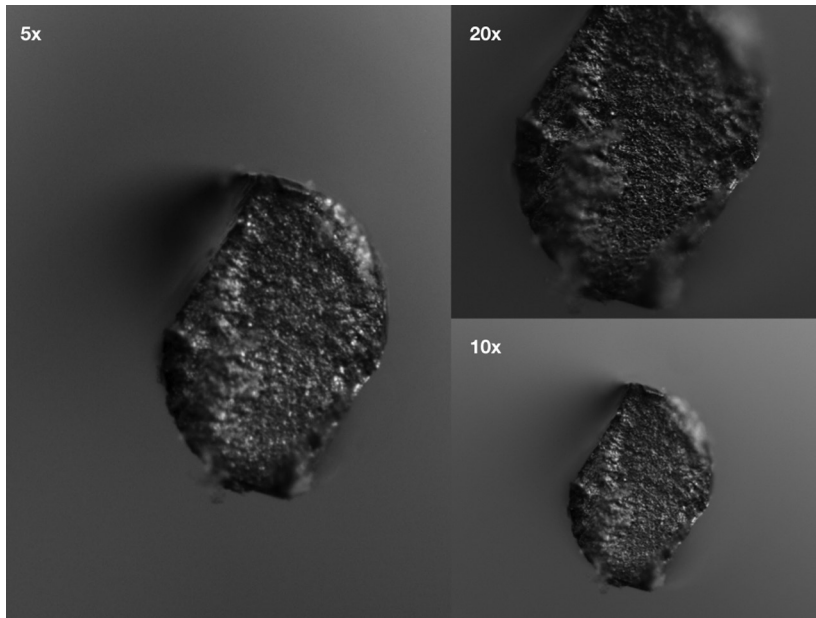
## Results

Mean values for fragment length, showing no statistically relevant differences ( $p > 0,05$ ), demonstrate that there is no difference in the insertion of the instruments inside the stainless steel canal and therefore no differences in the portion of the instrument subjected to the stresses (Table 1).

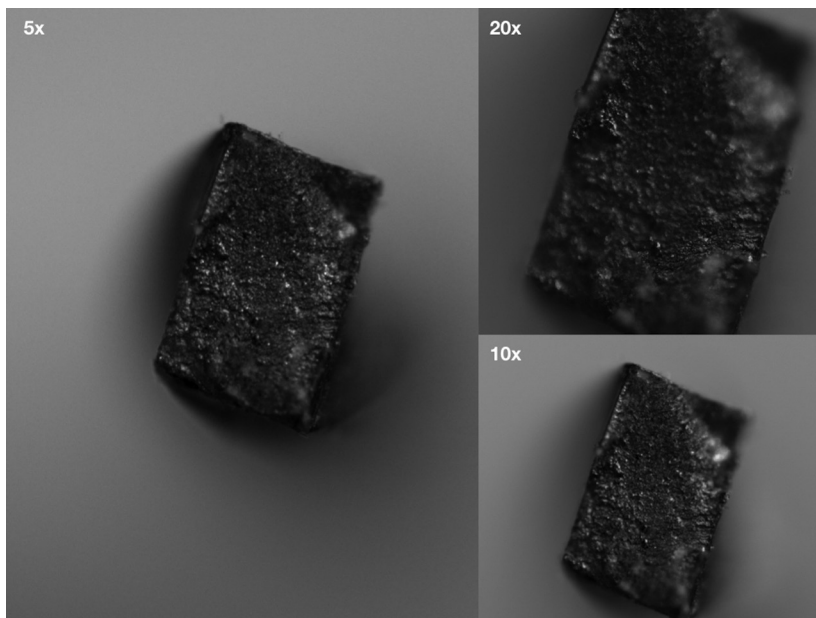
Mean values for time to fracture for Reziflow instruments were 50,75 seconds (SD +/- 20,06) and for WOG instruments were 30,13 seconds (SD +/- 9,40). Statistical analysis found significant differences between the two instruments ( $p < 0,05$ ).

## Discussion

The two instruments selected for the study were both designed for use in CCW reciprocating motion. The instruments have the same tip size #25, but a different ta-



**Fig. 1:** Reziflow’s fractured site at 5x, 10x and 20x magnification (Zeiss Scope A1, Oberkochen, Germany).



**Fig. 2:** WaveOne Gold’s fractured site at 5x, 10x and 20x magnification (Zeiss Scope A1, Oberkochen, Germany).

**Table 1:** Time to fracture (seconds) and length (mm) of fractured fragments of instruments during cyclic fatigue testing.

GROUP	TtF (seconds)		FL (mm)	
	Mean	SD	Mean	SD
Wave One Gold	30.13	9.40	6.02	0.53
Reziflow	50.75	20.06	6.27	0.57

per 0.08 for the coronal part, 3 mm from the tip, for the WOG and 0.06 constant taper for the ReziFlow.

The test results showed significant differences: these results could have been influenced by three main different factors: design, alloy and motion. The recent literature demonstrated the importance of the angles of reciprocating motion in the cyclic fatigue life of NiTi rotary instruments (27). Although the Wave One motion is not clearly disclosed by the manufacturers, the present study was not influenced by the reciprocating angles, because both the instruments have been rotated using the Wave One proprietary motion. It must be explained that the reciprocating movement's main aim is to reduce torsional loads and consequently torsional failure: the effect on flexural stresses is probably less evident, resulting in a significant improvement during the cyclic fatigue test (26,27).

The instruments were made from different alloys: thermal treated, XX-Wire, for Wave One Gold and traditional NiTi alloy for ReziFlow. According to previous study, cyclic fatigue resistance can be influenced by the alloy and the manufacturing process of the instruments (30). Thus the results of this study can be influenced by their metallurgical composition and related behavior.

Another possible explanation of the test's results is related to the different design and cross-section of the tested instruments. ReziFlow has an S-shaped cross sectional design, similar to Reciproc and M-Two instruments. WaveOne Gold instruments have a modified convex triangular cross-section at the tip and a convex triangular cross-section in the middle and a coronal portion that is similar to the cross-section of the ProTaper instruments (31,32). Nevertheless the influence of instrument's design on the cyclic fatigue resistance is controversial, and is still unclear how the cross-sectional design can influence the stress on the instruments. (33-36) Anyway most recent studies demonstrated that the resistance of rotary instruments is influenced by the quantity of metal mass: it is reported that the S-shape cross sectional design is characterized by a lower cross sectional metal mass that is related with an higher fatigue resistance (31). The influence of the design in the cyclic fatigue lifespan has been considered also in other studies (32). The null hypothesis can be rejected, as the result of the test that showed statistically significant differences between the two instruments in cyclic fatigue lifespan. However, each of the different design and manufacturing features could be responsible for fatigue resistance, but it is not clear which of them is most correlated with instrument's impairment, since the different features act simultaneously.

Wave One and ReziFlow showed statistically significant differences in cyclic fatigue test. Since motion was the same, differences could be related to two factors: the different cross sectional and/or the different thermal treat-

ment of the two instruments. However, further studies are needed to better evaluate the specific role of the different cross-sectional design and the thermal treatment of the alloy, in improving fatigue resistance to fracture.

## References

1. Kwak SW, Cheung GS, Ha JH, Kim SK, Lee H, Kim HC. Preference of undergraduate students after first experience on nickel-titanium endodontic instruments. *Restor Dent Endod.* 2016;41:176-81.
2. Rubini AG, Plotino G, Al-Sudani D, Grande NM, Putorti E, Sonnino G, Cotti E, Testarelli L, et al. A new device to test cutting efficiency of mechanical endodontic instruments. *Med Sci Monit.* 2014;20:374-8.
3. Al-Sudani D, Grande NM, Plotino G, Pompa G, Di Carlo S, Testarelli L, et al. Cyclic fatigue of nickel-titanium rotary instruments in a double (S-shaped) simulated curvature. *J Endod.* 2012;38:987-9.
4. Ebihara A, Yahata Y, Miyara K, Nakano K, Hayashi Y, Suda H. Heat treatment of nickel-titanium rotary endodontic instruments: effects on bending properties and shaping abilities. *Int Endod J.* 2011;44:843-9.
5. Testarelli L, Plotino G, Al-Sudani D, Vincenzi V, Giansiracusa A, Grande NM, et al. Bending properties of a new nickel-titanium alloy with a lower percent by weight of nickel. *J Endod.* 2011;37:1293-5.
6. Plotino G, Rubini AG, Grande NM, Testarelli L, Gambarini G. Cutting efficiency of reciproc and waveone reciprocating instruments. *J Endod.* 2014;40:1228-30.
7. Gambarini G, Pongione G, Rizzo, F, Testarelli L, Cavalleri G, Gerosa, R. Bending properties of nickel-titanium instruments: a comparative study. *Minerva stomatol.* 2008;57:393-8.
8. Di Fiore PM, Genov KA, Komaroff E, Li Y, Lin L. Nickel-titanium rotary instrument fracture: a clinical practice assessment. *Int Endod J.* 2006;39:700-8.
9. Gambarini G, Giansiracusa Rubini A, Sannino G, Di Giorgio G, Piasecki L, Al-Sudani D, et al. Cutting efficiency of nickel-titanium rotary and reciprocating instruments after prolonged use. *Odontology.* 2016;104:77-81.
10. Parashos P, Messer H. Rotary NiTi instrument fracture and its consequences. *J Endod.* 2006;32:1031-43.
11. Plotino G, Grande NM, Cordaro M, Testarelli L, Gambarini G. Measurement of the trajectory of different NiTi rotary instruments in an artificial canal specifically designed for cyclic fatigue tests. *Oral Surg Oral Med Oral Pathol Oral Radiol Endod.* 2009;108:152-6.
12. Capar ID, Ertas H, Arslan H. Comparison of cyclic fatigue resistance of novel nickel-titanium rotary instruments. *Aust Endod J.* 2015;41:24-8.
13. Gambarini G, Plotino G, Sannino GP, Grande NM, Giansiracusa A, Piasecki L, et al. Cyclic fatigue of instruments for endodontic glide path. *Odontology.* 2015;103:56-60.
14. Plotino G, Costanzo A, Grande NM, Petrovic, R, Testarelli L, Gambarini G. Experimental evaluation on the influence of autoclave sterilization on the cyclic fatigue of new nickel-titanium rotary instruments. *J Endod.* 2012;38:222-5.
15. Braga LC, Faria Silva AC, Buono VT, de Azevedo Bahia MG. Impact of heat treatments on the fatigue resistance of different rotary nickel-titanium instruments. *J Endod.* 2014;40:1494-7.
16. Zinelis S, Darabara M, Takase T, Ogane K, Papadimitriou GD. The effect of thermal treatment on the resistance of nickel-titanium rotary files in cyclic fatigue. *Oral Surg Oral Med Oral Pathol Oral Radiol Endod.* 2007;103:843-7.
17. Plotino G, Grande NM, Mazza C, Petrovic R, Testarelli L, Gambarini G. Influence of size and taper of artificial canals on the trajectory of NiTi rotary instruments in cyclic fatigue studies. *Oral Surg Oral Med Oral Pathol Oral Radiol Endod.* 2010;109:60-6.
18. Gambarini G, Gergi R, Grande NM, Osta N, Plotino G, Testarelli L. Cyclic fatigue resistance of newly manufactured rotary nickel titanium instruments used in different rotational directions. *Aust Endod J.* 2013;39:151-4.
19. Plotino G, Grande NM, Cotti E, Testarelli L, Gambarini G. Blue treatment enhances cyclic fatigue resistance of vortex nickel-titanium rotary files. *J Endod.* 2014;40:1451-3.

20. Pereira ES, Peixoto IF, Viana AC, Oliveira II, Gonzalez BM, Buono VT, et al. Physical and mechanical properties of a thermomechanically treated NiTi wire used in the manufacture of rotary endodontic instruments. *Int Endod J.* 2012;45:469-74.
21. Miccoli G, Gaimari G, Seracchiani M, Morese A, Khrenova T, Di Nardo D. In vitro resistance to fracture of two nickel-titanium rotary instruments made with different thermal treatments. *Ann Stomatol.* 2018;8:53-8.
22. Plotino G, Testarelli L, Al-Sudani, D, Pongione G, Grande NM, Gambarini G. Fatigue resistance of rotary instruments manufactured using different nickel-titanium alloys: A comparative study. *Odontology.* 2014;102:31-5.
23. Shen Y, Zhou HM, Zheng YF, Peng B, Haapasalo M. Current challenges and concepts of the thermomechanical treatment of nickel-titanium instruments. *J Endod.* 2013;39:163-72.
24. Yared G. Canal preparation using only one Ni-Ti rotary instrument preliminary observations. *Int Endod J.* 2008;41:339-44.
25. Kim HC, Kwak SW, Cheung GSP, Ko DH, Chung SM, Lee W. Cyclic fatigue and torsional resistance of two new nickel-titanium instruments used in reciprocation motion: reciproc versus WaveOne. *J Endod.* 2012;38:541-4.
26. De-Deus G, Moreira EJ, Lopes HP, Elias CN. Extended cyclic fatigue life of F2 ProTaper instruments used in reciprocating movement. *Int Endod J.* 2010;43:1063-8.
27. Gambarini G, Rubini AG, Al Sudani D, Gergi R, Culla A, De Angelis F, et al. Influence of different angles of reciprocation on the cyclic fatigue of nickel-titanium endodontic instruments. *J Endod.* 2012;38:1408-11.
28. Gambarini G, Gergi R, Naaman A, Osta N, Al Sudani D. Cyclic fatigue analysis of twisted file rotary NiTi instruments used in reciprocating motion. *Int Endod J.* 2012;45:802-6.
29. Gambarini G, Tucci E, Bedini R, Pecci R, Galli M, Milana V, et al. The effect of brushing motion on the cyclic fatigue of rotary nickel titanium instruments. *Annali dell'Istituto Superiore di Sanita.* 2010;46:400-4.
30. Gambarini G, Grande NM, Plotino G, Somma F, Garala M, De Luca M, et al. Fatigue resistance of engine-driven rotary nickel-titanium instruments produced by new manufacturing methods. *J Endod.* 2008;34:1003-5.
31. Grande NM, Plotino G, Pecci R, Bedini R, Malagnino VA, Somma F. Cyclic fatigue resistance and three dimensional analysis of instruments from two nickel-titanium rotary systems. *Int Endod J.* 2006;39:755-63.
32. Plotino G, Grande NM, Testarelli L, Gambarini G. Cyclic fatigue of Reciproc and WaveOne reciprocating instruments *Int Endod J.* 2012;45:614-8.
33. Turpin YL, Chagneau F, Bartier O, Cathelineau G, Vulcain JN. Impact of torsional and bending inertia on root canal instruments. *J Endod.* 2001;27:333-6.
34. Biz MT, Figueiredo JAP. Morphometric analysis of shank-to-flute ratio in rotary nickel-titanium files. *Int Endod J.* 2004;37:353-8.
35. Diemer F, Calas P. Effect of pitch length on the behaviour of rotary triple helix root canal instruments. *J Endod.* 2004;30:716-8.
36. Chow DY, Stover SE, Bahcall JK, Jaunberzins A, Toth JM. An in vitro comparison of the rake angles between K3 and Profile endodontic file systems. *J Endod.* 2005;31:180-2.

#### **Conflict of Interest**

The authors have declared that no conflict of interest exist.