

# SCIENTIFIC REPORTS

OPEN

## Retinal micro-vascular and aortic macro-vascular changes in postmenopausal women with primary hyperparathyroidism

Jessica Pepe<sup>1</sup>, Cristiana Cipriani<sup>1</sup>, Massimiliano Tedeschi<sup>2</sup>, Mario Curione<sup>1</sup>, Mariacristina Parravano<sup>2</sup>, Monica Varano<sup>2</sup>, Federica Biamonte<sup>1</sup>, Luciano Colangelo<sup>1</sup> & Salvatore Minisola<sup>1</sup>

**Aim of the study** was to evaluate the micro and macro-vascular changes in patients with primary hyperparathyroidism (PHPT) compared to controls. 30 postmenopausal PHPT women (15 hypertensive and 15 normotensive) and 30 normotensive controls underwent biochemical evaluation of mineral metabolism and measurements of arterial stiffness by 24 hour ambulatory blood pressure monitoring. Retinal microcirculation was imaged by a Retinal Vessel Analyzer. PHPT patients also underwent bone mineral density measurements and kidney ultrasound. PHPT patients had higher mean calcium and parathyroid hormone values compared to controls. Evaluating macro-vascular compartment, we found higher values of 24 hours-systolic, diastolic blood pressure, aortic pulse wave velocity (aPWV) and aortic augmentation index (Aix) in hypertensive PHPT, but not in normotensive PHPT compared to controls. The eye examination showed narrowing arterial and venular diameters of retinal vessels in both hypertensive and normotensive PHPT compared to controls. In hypertensive PHPT, 24 hours systolic blood pressure was associated only with parathyroid hormone (PTH) levels ( $\beta = 0.36$ ,  $p = 0.04$ ). aPWV was associated with retinal diameter ( $\beta = -0.69$ ,  $p = 0.003$ ), but not with PTH. Retinal artery diameter was associated with PTH ( $\beta = -0.6$ ,  $p = 0.008$ ). In the normotensive PHPT, only PTH was associated with retinal artery diameter ( $\beta = -0.60$ ,  $p = 0.01$ ) and aortic Aix ( $\beta = 0.65$ ,  $p = 0.02$ ). In conclusion, we found macro-vascular impairment in PHPT and that micro-vascular impairment is negatively associated with PTH, regardless of hypertension in PHPT.

In primary hyperparathyroidism (PHPT), a combination of structural and functional vascular changes has been advocated with conflicting results<sup>1</sup>. Thus, currently, the presence of atherosclerosis, even with early vascular abnormalities or so called vascular impairments, is not included among the criteria needed to submit patients to surgery<sup>2</sup>. Few studies reported that these vascular impairments in PHPT were associated with hypertension<sup>3,4</sup>, while others reported that they were related to high calcium and parathyroid hormone levels which are the biochemical features of PHPT<sup>5-7</sup>. Other authors did not find any difference between PHPT and controls as regards vascular functions<sup>8,9</sup>.

These results may be due to different calcium levels in the populations studied, or to co-morbidities or also to different methods used to measure vascular impairment, namely arterial stiffness.

Currently, regional and local arterial stiffness may be measured directly and noninvasively, at various sites along the arterial tree, by assessing pulse wave velocity (PWV) and augmentation index (Aix)<sup>10</sup>. Aortic PWV has been shown to be a powerful predictor of cardiovascular events in the general population<sup>11</sup>. We chose 24 hour ambulatory blood pressure monitoring (ABPM) to determine both PWV and Aix, because this method has never been utilized in PHPT populations<sup>12</sup>. Interestingly, studies suggest that large artery stiffness is also associated with micro-vascular changes<sup>13</sup>. In particular, over the last decade, a large population-based study has shown that very small vessels, such as in the retina, are associated with a wide range of subclinical and clinical cardiovascular

<sup>1</sup>Department of Internal Medicine and Medical Disciplines, "Sapienza" University, Viale del Policlinico 155, 00161, Rome, Italy. <sup>2</sup>IRCCS-G. B. Bietti Foundation, IRCCS, Rome, Italy. Correspondence and requests for materials should be addressed to J.P. (email: [jessica.pepe@uniroma1.it](mailto:jessica.pepe@uniroma1.it))

	Controls (n = 30)	PHPT Hypertensive (n = 15)	PHPT Normotensive (n = 15)
Age (years)	61.0 ± 9.8	61.1 ± 4.8	64.8 ± 7.8
Years since menopause (years)	12.4 ± 8.9	15.2 ± 6.2	14.7 ± 7.18
Body mass index (kg/m <sup>2</sup> )	23.1 ± 2.8	24.9 ± 3.6	23.9 ± 4.2
Creatinine (mg/dl)	0.8 ± 0.1	0.8 ± 0.2	0.7 ± 0.1
Calcium (mg/dL)	9.3 ± 0.4	10.7 ± 0.5**	10.6 ± 0.3 <sup>§§</sup>
Ionized Calcium (mmol/L)	1.2 ± 0.0	1.4 ± 0.1***	1.4 ± 0.0 <sup>§§</sup>
Phosphorus (mg/dL)	4.0 ± 0.3	2.9 ± 0.3**	2.9 ± 0.4 <sup>§§</sup>
25(OH)D (nmol/L)	34.6 ± 11.4	37.1 ± 11.3	36.4 ± 14.3
Urinary calcium 24 hours	214.0 ± 62.2	264.3 ± 84.7*	274.1 ± 122.0 <sup>§</sup>
PTH (ng/L)	36.4 ± 14.3	100.4 ± 37.4**	80.1 ± 26.3 <sup>§§</sup>
Alkaline phosphatase (U/L)	82.2 ± 23.3	91.5 ± 47.0	83.4 ± 54.7
Glucose (mg/dL)	89.8 ± 6.0	86.7 ± 5.6	88.7 ± 6.5
Total cholesterol (mg/dL)	203.8 ± 31.4	210.6 ± 40.8	190.9 ± 30.0
High Density Lipoprotein (mg/dL)	61.1 ± 13.2	62.2 ± 10.6	57.1 ± 10.3
Low Density Lipoprotein (mg/dL)	121.1 ± 27.5	128.5 ± 25.8	114.9 ± 22.6
Triglycerides (mg/dL)	120.6 ± 38.1	115.13 ± 42.08	124.4 ± 60.7

**Table 1.** Anthropometric and biochemical parameters in patients with primary hyperparathyroidism (PHPT) hypertensive and normotensive and controls. Results are presented as mean ± 1 SD. Controls vs PHPT hypertensive \*p ≤ 0.05; \*\*p ≤ 0.0001, \*\*\*p ≤ 0.00001. Controls vs PHPT normotensive <sup>§</sup>p ≤ 0.05; <sup>§§</sup>p ≤ 0.0001.

disease<sup>13,14</sup>. The retina represents a unique site where the microvasculature can be directly and non-invasively visualized, but until now, with a limit of subjective clinical assessment. However, nowadays a modern digital imaging systems have revolutionized the assessment of retinal photograph by capturing a larger segment of the retina and allowing a more objective documentation. So far, there is no information available regarding retinal micro-vascular assessment in PHPT patients.

Our study aimed to provide a preliminary analysis of the micro-vascular retinal vessels using a modern digital imaging system and of the macro-vascular compartment using 24 hour ABPM to derive both PWV and Aix in PHPT patients with and without arterial hypertension compared to controls.

## Results

The characteristics of PHPT patients are reported in Table 1. Seventy - three percent of subjects had densitometric osteoporosis; morphometric or clinical vertebral fracture were present in 16% of the patients and 13% of the patients reported peripheral fractures. Ultrasound revealed renal calculi in 23% of the patients. Serum calcium levels higher than 1 mg/dl above the normal range, were present in 13% of the patients. All patients, met the current criteria for surgery according to current guidelines, except three patients with mild disease<sup>2</sup>.

There were no difference between PHPT and controls considering anthropometric parameters, nor between hypertensive PHPT patients and normotensive PHPT patients (Table 1).

As expected, mean total and ionized calcium, parathyroid hormone (PTH) and 24 hour urinary calcium were higher in both groups of PHPT patients compared to controls (all p < 0.001, Table 1).

No differences were found as regards biochemical evaluation between hypertensive and normotensive PHPT patients.

Cardiovascular risk factors were similar between PHPT patients and controls regarding BMI, glucose and lipid profile as reported in Table 1. Alcohol consumption was ascertained in 13.3% of the PHPT population and in 16.6% of the control subjects (p = ns). Tobacco use was recorded in 20% of the PHPT population and in 26.6% of the control subjects (p = ns).

Twelve PHPT patients affected by hypertension were under medication. In particular, 9 patients were under alfa-blockers and 3 were under loop-diuretics. The mean time since diagnosis of hypertension was 5 ± 2 years.

We found that hypertensive PHPT patients had higher values of 24 h-systolic, diastolic blood pressure and aortic systolic blood pressure (SBP-Ao) as compared to the controls and to the normotensive PHPT group (all p < 0.05, Table 2). Seven out of fifteen PHPT patients showed a non physiological decrease in blood pressure during night time (non dipper).

Mean baseline best corrected visual acuity was 0.1 ± 0.1 LogMar with a mean refractive error of +1.25 sf.

In the assessment of the macro-vascular compartment, aortic PWV and aortic Aix were significantly higher in hypertensive PHPT patients as compared to both the controls and to the normotensive PHPT patients (all p < 0.05, Table 2).

The normotensive PHPT patients showed no difference as concerns blood pressure and macrovascular parameters compared to the controls.

The eye examination to explore the micro-vascular compartment showed a narrowing arterial and venular diameter of the retinal vessels in both hypertensive and normotensive PHPT patients compared to the controls (Table 2).

	Controls (n = 30)	PHPT Hypertensive (n = 15)	PHPT Normotensive (n = 15)
<b>24 hour ambulatory blood pressure</b>			
24 hour -SBP (mmHg)	116.03 ± 13.71	153.26 ± 6.16**	123.46 ± 7.04 <sup>°°°</sup>
24 hour -DBP (mmHg)	73.30 ± 14.54	88.26 ± 10.93**	70.2 ± 8.3 <sup>°°</sup>
MAP (mmHg)	87.37 ± 9.14	109.06 ± 7.14**	88.6 ± 8.79 <sup>°°</sup>
ABPM-PP (mmHg)	51.18 ± 20.77	71.86 ± 10.02*	51.80 ± 9.06 <sup>°°</sup>
SBP-AO (mmHg)	118.12 ± 15.48	156.33 ± 8.10**	120.8 ± 10.31 <sup>°°</sup>
HR (beats/minutes)	73.30 ± 14.49	71.0 ± 6.69	72.8 ± 8.3
<b>Macro-vascular assessment</b>			
Brachial AIx (%)	-22.15 ± 22.43	-17.62 ± 8.80	-22.71 ± 11.43
Aortic AIx (%)	28.74 ± 9.87	42.62 ± 10.88*	30.01 ± 13.67 <sup>°</sup>
aPWV (m/s)	7.53 ± 2.70	10.81 ± 1.00**	7.97 ± 1.26 <sup>°°</sup>
<b>Micro-vascular assessment</b>			
Retinal artery diameter (µm)	109.47 ± 11.91	99.33 ± 16.53*	101.00 ± 15.37 <sup>°</sup>
Retinal vein diameter (µm)	133.57 ± 14.40	124.19 ± 19.99*	125.6 ± 14.47 <sup>°</sup>
AVR (index)	0.86 ± 0.05	0.83 ± 0.06	0.82 ± 0.06 <sup>°</sup>

**Table 2.** 24 hour parameters of blood pressure, macro-vascular parameters of arterial stiffness and retinal micro-vascular parameters in hypertensive and normotensive patients with primary hyperparathyroidism (PHPT) and controls. Results are presented as mean ± 1 SD, or percentages. Legend: SBP = systolic blood pressure, DBP = diastolic blood pressure, MAP = mean arterial pressure, PP = pulse pressure, AO = aortic, HR = heart rate, Aix = arterial index, aPWV = aortic pulse wave velocity, AVR = retinal artery vein ratio. \* $p \leq 0.05$ ; \*\* $p \leq 0.0001$  Controls vs PHPT hypertensive. <sup>°</sup> $p \leq 0.05$ ; <sup>°°</sup> $p \leq 0.0001$  Controls vs PHPT normotensive. <sup>°°°</sup> $p \leq 0.05$ , <sup>°°°°</sup> $p \leq 0.0001$  PHPT hypertensive vs PHPT normotensive.

We found that 24 h systolic blood pressure and SBP-Ao were associated with PTH levels in the PHPT hypertensive group (beta = 0.36,  $p = 0.04$  and beta = 0.71,  $p = 0.002$  respectively), but not with age, BMI and calcium levels. aPWV was associated with retinal arterial diameter (beta = -0.69,  $p = 0.003$ ), but not with PTH, BMI, blood pressure and age. Retinal arterial diameter was negatively associated with PTH (beta = -0.60,  $p = 0.008$ , Fig. 1A).

In the normotensive PHPT group, we did not find an association between aPWV and retinal vessel diameter, nor with PTH neither with blood pressure parameters. The only associations found were a negative association between PTH and retinal arterial diameter (beta = -0.60,  $p = 0.01$ , Fig. 1B), and a positive association between PTH and aortic AIx (beta = 0.65,  $p = 0.02$ ). Considering all of the PHPT sample and including controls, a negative association between retinal arterial vessel diameter and PTH was also found (beta = -0.51,  $p < 0.001$ , Fig. 2).

## Discussion

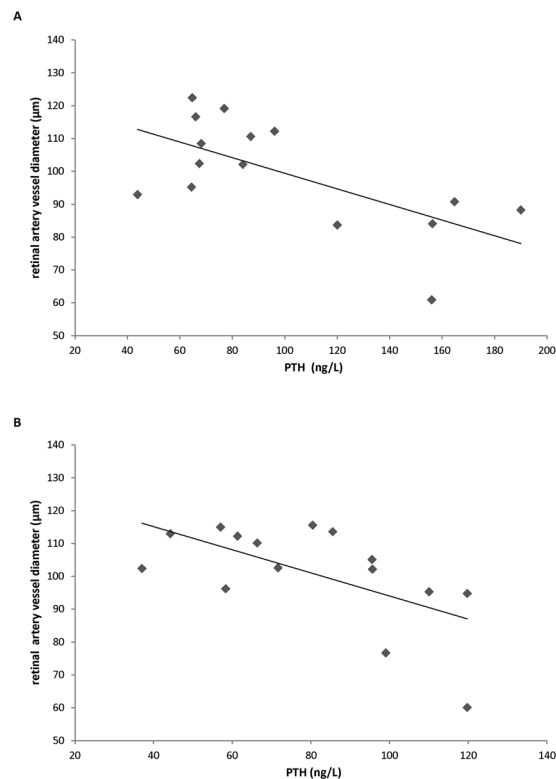
The strength of this study derives from the demonstration for the first time of a retinal vessel impairment in PHPT patients together with macro-vascular abnormalities in hypertensive PHPT patients and a retinal vessel narrowing in normotensive PHPT patients, compared to controls. In particular, in PHPT patients with and without hypertension PTH levels are negatively associated with retinal vessel diameter.

The macro-vascular abnormalities shown in our study are in line with previous papers on this topic<sup>3,4</sup>, while the novelty of micro-vascular retinal vessel narrowing in PHPT, regardless of the presence of hypertension, deserves attention. Indeed, in the general population, retinal arteriolar narrowing may precede the presentation of hypertension by years in initially normotensive individuals, supporting the view that micro-vascular changes exert a key role in the evolution from normal to elevated blood pressure<sup>15</sup>. The atherosclerosis risk in communities study showed that normotensive participants, who had generalized arteriolar narrowing at baseline, were 60% more likely to be diagnosed with hypertension over a 3-year period than individuals who did not have arteriolar narrowing<sup>16</sup>.

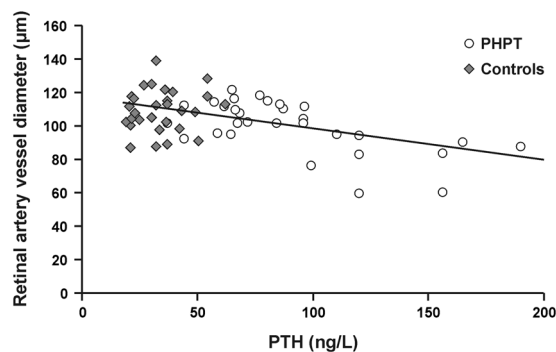
The pathophysiological mechanisms that link PTH to vascular compliance markers remain unclear. PTH may influence arterial vasculature through the serum levels modification of several molecules such as osteoprotegerin or vessel endothelial growth factor<sup>17-21</sup>. Another plausible explanation is that PTH adversely affects vascular smooth muscle cells, which might increase vascular stiffness and promote atherosclerotic changes<sup>22,23</sup>. Evidence from animal and human studies suggests that endothelium is an important regulator of arterial stiffness and discussions are still ongoing as to whether endothelial dysfunction contributes to increased arterial stiffness or if arterial stiffness causes endothelial alteration, which in turn further increases arterial stiffness.

Considering macro-vascular damage, we observed a higher aPWV in hypertensive PHPT patients, but not a higher brachial AIx compared to controls and normotensive PHPT patients.

The AIx is the proportion of central pulse pressure that results from arterial wave reflection and is a commonly used measure of arterial stiffness. Although the timing of the arrival of the reflected wave at the proximal aorta is largely determined by large artery PW, Aix is not a simple surrogate measure of PWV. It is influenced by vasoactive drugs independently of aPWV<sup>24</sup> suggesting that it is also determined by the intensity of wave reflection which, in turn, is determined by the diameter and elasticity of small arteries and arterioles. However, twin studies suggest that AIx is partially heritable and independent of these variables<sup>25</sup>. It might be possible that in our sample



**Figure 1.** Association between retinal artery vessel diameter and PTH levels in hypertensive PHPT patients (A) and normotensive PHPT patients (B).



**Figure 2.** Association between retinal artery vessel diameter and PTH levels in all the sample studied including PHPT patients and controls.

the use of antihypertensive drugs has influenced this parameter; however studying hypertensive patients without any medication would have been unethical.

It should be noted that at the moment in Europe and in America there is no specific practical recommendation on the use of PWV and ALx and more data are required before these vascular biomarkers can be recommended for routine use in the general population<sup>12</sup>.

However, PWV is a well know factor of increased cardiovascular risk in the general population and it might be possible that increased vascular stiffness in subjects with PHPT may account in part for the increased cardiovascular risk in this group.

Our study has a few limits. We studied only postmenopausal women of a single geographical area. Thus, men and PHPT patients in different countries may show other clinical expressions, as it has been shown for the classical manifestations of the disease<sup>26,27</sup>.

Taken together our data point to the role of PTH as a marker of atherosclerosis in PHPT patients not only for large vessels but also for small vessels, as it has been suggested also in the general population<sup>28</sup>.

Moreover our study suggests that the eye examination, which is a non invasive and well know tool for the examination of hypertensive patients, may have a possible role also in the clinical assessment of normotensive

PHPT, as retinal vessels are a possible target of PTH. We considered in the current study the assessment of a single point of the retinal temporal artery and of the retinal temporal vein as representative of the changes in the retinal circulation. However more generalized indexes, such as the central retinal arterial equivalent and venular equivalent, might be more suitable indicators of peripheral micro-vascular abnormalities.

Further longitudinal studies are needed to determine the temporal relationship between the development of diminished vascular plasticity and possible incident cardiovascular events in PHPT patients. Moreover, since we studied patients who met surgical criteria for parathyroid adenoma removal, interest arises, for further research, as to whether surgical treatment may influence both macro and micro-vascular abnormalities in PHPT patients.

## Methods

**Subjects.** The population studied included 15 consecutive Caucasian postmenopausal women (age range 55–75 years old) diagnosed as having PHPT with hypertension and 15 without hypertension at the Metabolic Bone Disease Unit of the University of Rome, ‘Sapienza’ (Italy), between January 2017 and February 2018. The diagnosis of PHPT was made following the finding of hypercalcemia with an inappropriately high plasma level of PTH<sup>29</sup>. During the same period, in the same center, 30 Caucasian volunteer postmenopausal women in the same age range and with the same body mass index (BMI), without hypertension, were enrolled as the control group. Exclusion criteria included: BMI > 30 kg/m<sup>2</sup>, hypo- and hyperthyroidism, previous cardiovascular diseases, previous medical history of dyslipidemia and/or use of statins, use of beta blocker, angiotensin-converting-enzyme inhibitor, estrogen replacement therapy, diabetes mellitus type 1 and 2, creatinine clearance <60 ml/min and history of peripheral arterial diseases.

We excluded eyes diseases which could modify retinal vessels, especially a history of glaucoma, retinal vein occlusion and retinitis pigmentosa. In addition patients with spherical refractive error  $\geq \pm 6$  diopters, astigmatism  $\geq \pm 3$  diopters, optical media opacities that could influence functional and structural retinal testing were excluded.

Every patient provided written informed consent. The study was approved by “Policlinico Umberto I” Hospital Ethics Committee (protocol number 3454) and by the Institutional Review Board of the G.B. Bietti Foundation. The study protocol adhered to the tenets of the Declaration of Helsinki.

After informed consent was obtained, patients and control subjects with 25(OH)D levels lower than 20 ng/mL were treated weekly with 50,000 I.U. of cholecalciferol for one month. After completing a validated questionnaire, those on a calcium poor diet were supplemented with calcium (1,000 mg) per os daily, which is the recommended dose<sup>30</sup>. After one month of supplementation, both PHPT and controls were reevaluated by blood sample analysis.

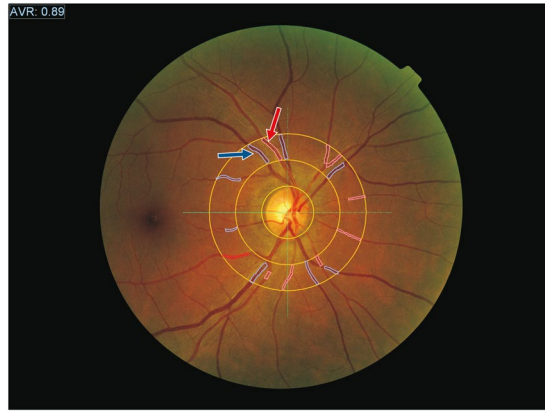
**Cardiovascular risk factors.** BMI was calculated as weight (kilograms) divided by the square of height (square meters). Alcohol consumption (more than three alcoholic units per day) and current smoking status were assessed in a face-to-face medical interview. Blood pressure (millimetres of mercury) was measured after 5 minutes of rest, at the upper left arm with subjects in a lying position and using an oscillometric blood pressure (BP) monitor to diagnose hypertension, following the current European Society of Cardiology guidelines<sup>31</sup>.

**Biochemical evaluation.** We measured total and ionized calcium, phosphorus, creatinine, glucose, 25(OH) vitamin D, parathyroid hormone (PTH), alkaline phosphatase, as described previously<sup>32,33</sup>. Creatinine clearance (CrCl) was calculated using the formula of Cockcroft and Gault. Total cholesterol, high density lipoprotein (HDL) and triglycerides (TC) were measured using enzymatic methods (Hitachi 911 analyzer, Roche Diagnostics, Basel, Switzerland). LDL was calculated with the Friedewald Formula:  $LDL = TC - HDL - TG/5.0$  (mg/dL).

**Skeletal and renal assessment.** In PHPT patients, both skeletal and renal assessment were carried out to better characterize the disease. Bone mineral density (BMD) of the lumbar spine (L1–L4) in the anterior–posterior projection, of the femur (neck and total hip) and nondominant distal one-third radius was measured in each PHPT patient by dual-energy X-ray absorptiometry (Hologic QDR 4500, Hologic Inc, Waltham, MA, USA). The precision error of lumbar spine and total hip measurements was 1.3 and 1.7%, respectively and 1.3% at the distal 1/3 radius<sup>34</sup>. Fractured lumbar vertebrae were excluded from BMD measurement. Each patient subject underwent morphometric vertebral assessment (VFA) with the DXA scan<sup>35</sup>. Abdominal ultrasound was performed by a skilled radiologist to detect renal calculi, with an ultrasound scanner (Esaote MyLab 70 x Vision; Genoa, Italy), as previously described<sup>36</sup>.

**Non-invasive vascular studies.** All participants underwent 24 hour ABPM. They were instructed to keep their non-dominant arm still at the side during measurements. Measurements were carried out by using the 24 hour TensioMed Arteriograph system (TensioMed Ltd., Budapest, Hungary). The automatic monitoring system was set up to obtain measurements every 15 minutes while subjects were awake and every 30 minutes while the subjects were sleeping. Details of this device have been previously described<sup>12</sup>. This technique is based on the fact that the contraction of the myocardium generates pulse waves in the aorta. The pulse wave goes to the arm (first wave), where the cuff is located, then to the aorta. Part of the wave is reflected at the bifurcation of the aorta, goes back, adds to the first and is sensed by the cuff. The first wave is reflected at the bifurcation of the aortic wall; a second, reflected wave therefore appears as a late systolic peak.

The morphology of this second wave depends on the stiffness of the large artery, the reflection time at 35 mmHg suprasystolic pressure of the brachial artery and the peripheral resistance-dependent amplitude. The cuff collects a pulse wave that contains both the first and reflected waves. The software calculates aortic PWV (aPWV) and AIx from this combined wave. The speed with which the pulse wave travels along the jugular fossa-symphysis distance is aPWV. The jugular fossa-symphysis distance is anatomically identical to the distance between the aortic trunk and the bifurcation. Because PWV indicates the pulse wave speed in the arterial tree: if the artery is stiff, the speed is increased. The AIx is defined as the percentage ratio of the pressure increment



**Figure 3.** Image of an eye examination in a PHPT patient, obtained by retinal vessel analyzer. The assessments of the arterial caliber and of the vein caliber were taken between 1 and 2 disc diameters from the margin of the optic disc, in correspondence with the major superior temporal arteries (red arrow) and vein (blue arrow) of the right eye.

caused by the reflected wave to the direct wave. Normally, the reflected component in peripheral waves is always smaller than the direct component and AIx is negative.

**Retinal vessel assessment.** In order to exclude other diseases that may modify retinal vessel diameter, each patient received a comprehensive ophthalmological assessment which involved a visual acuity and a slit-lamp examination, a Goldmann applanation tonometry and an ocular fundus evaluation.

All patients and controls were imaged by a Retinal Vessel Analyzer (RVA) by positioning the subject in front of a non-midriatic camera (TopconTRC-NV2000) to obtain a retinographic image (45°). The images were then processed by IMEDOS software measuring the caliber of vessels emerging from the optic disc, as previously described<sup>37</sup>. In particular, the RVA produces continuous and automated analysis of the vessels combined with correction for small eye movements. Using an adaptive algorithm to calculate the size of the vessels (Vessel Map 2-Z), this system combines high reproducibility with high temporal and of spatial resolution.

Measurements of the right eye were taken: in particular superior temporal retinal artery diameter (RAD), superior temporal retinal vein diameter (RVD) and artery-vein ratio (AVR) were taken between 1 and 2 disc diameters from the margin of the optic disc major (Fig. 3). Generally we considered the more temporal vein as “superior temporal vein” and the other vessel was recognized as a medial retinal vein or tributary vessel of the superior temporal vein<sup>38</sup>.

In view of the high reproducibility of the procedure, only one acquisition session was scheduled for each subject. One single measurement was performed by positioning the caliber at the outer margin of the first circle delimitating the optic disc<sup>39</sup>, due to the results of a previous study demonstrating the high correlation in vascular morphology between the left and the right eye<sup>40</sup>.

**Statistical analysis.** Statistical analysis was performed using SPSS for Windows version 13 (SPSS Inc., Chi, IL, USA). Categorical variables are described with numbers and percentages. Continuous variables are expressed as mean value  $\pm$  SD. Differences between groups were assessed with chi-squared test for categorical variables. We checked all variables in the three groups for normality. For comparison of continuous variables that failed to pass normality test, we used the Mann – Whitney test. For comparison of continuous variables was made using unpaired t-test. Pearson correlation coefficient (beta) was calculated for the measurement of micro-vascular and macro-vascular parameters with biochemical and anthropometric values. A p value  $< 0.05$  was considered statistically significant. As there are no data on retinal vessels in PHPT, it was not possible to calculate a sample size; thus, we decided to include at least 15 hypertensive patients, considering the previous study where 15 patients affected by PHPT and hypertension had a significantly different AIx compared to controls<sup>6</sup>.

## References

1. Pepe, J. *et al.* Cardiovascular manifestations of primary hyperparathyroidism: a narrative review. *Eur J Endocrinol.* **177**, 297–308 (2017).
2. Bilezikian, J. P., Khan, A. A., Potts, Jr. & on behalf of the Third International Workshop on the Management of Asymptomatic Primary Hyperthyroidism. Guidelines for the Management of Asymptomatic Primary Hyperparathyroidism: Summary Statement from the Third International Workshop. *J Clin Endocrinol Metab.* **94**, 335–339 (2009).
3. Cansu, G. B. *et al.* Parathyroidectomy in asymptomatic primary hyperparathyroidism reduces carotid intima-media thickness and arterial stiffness. *Clin Endocrinol (Oxf).* **84**, 39–47 (2016).
4. Rosa, J. *et al.* Pulse wave velocity in primary hyperparathyroidism and effect of surgical therapy. *Hypertension Research.* **34**, 296–300 (2011).
5. Schillaci, G. *et al.* Large-artery stiffness: a reversible marker of cardiovascular risk in primary hyperparathyroidism. *Atherosclerosis.* **218**, 96–101 (2011).
6. Rubin, M. R., Maurer, M. S., McMahon, D. J., Bilezikian, J. P. & Silverberg, S. J. Arterial stiffness in mild primary hyperparathyroidism. *J Clin Endocrinol Metab.* **90**, 3326–3330 (2005).

7. Smith, J. C. *et al.* Augmentation of central arterial pressure in mild primary hyperparathyroidism. *J Clin Endocrinol Metab.* **85**, 3515–3519 (2000).
8. Barletta, G. *et al.* Cardiovascular effects of parathyroid hormone: a study in healthy subjects and normotensive patients with mild primary hyperparathyroidism. *J Clin Endocrinol Metab.* **85**, 1815–21 (2000).
9. Tordjman, K. M. *et al.* Cardiovascular risk factors and arterial rigidity are similar in asymptomatic normocalcemic and hypercalcemic primary hyperparathyroidism. *Eur J Endocrinol.* **162**, 925–33 (2010).
10. Laurent, S. *et al.* European Network for Non-invasive Investigation of Large Arteries Expert consensus document on arterial stiffness: methodological issues and clinical applications. *Eur Heart J.* **27**, 2588–605 (2006).
11. Sutton-Tyrrell, K. *et al.* Elevated aortic pulse wave velocity, a marker of arterial stiffness, predicts cardiovascular events in well-functioning older adults. *Circulation.* **111**, 3384–90 (2005).
12. Omboni, S., Posokhov, I. N., Kotovskaya, Y. V., Protogerou, A. D. & Blacher, J. Twenty-Four-Hour Ambulatory Pulse Wave Analysis in Hypertension Management: Current Evidence and Perspectives. *Curr Hypertens Rep.* **18**, 72 (2016).
13. Wong, T. Y. *et al.* Retinal microvascular abnormalities and their relationship with hypertension, cardiovascular disease, and mortality. *Surv Ophthalmol.* **46**, 59–80 (2001).
14. Katsi, V. *et al.* Association between retinal microcirculation and aortic stiffness in hypertensive patients. *Int J Cardiol.* **157**, 370–373 (2012).
15. Tanabe, Y. *et al.* Retinal arteriolar narrowing predicts 5-year risk of hypertension in Japanese people: the Funagata study. *Microcirculation.* **17**, 94–102 (2010).
16. Wong, T. Y. *et al.* Atherosclerosis Risk in Communities Study. Retinal arteriolar diameters and risk of hypertension. *Ann Intern Med.* **140**, 248–255 (2004).
17. Szymczak, J. & Bohdanowicz-Pawlak, A. Osteoprotegerin in primary hyperparathyroidism. *Horm Metab Res.* **46**, 376–377 (2014).
18. Minisola, S. *et al.* Osteoprotegerin serum levels in primary hyperparathyroidism and changes following surgery. *Horm Metab Res.* **46**, 375 (2014).
19. Rashid, G., Bernheim, J., Green, J. & Benchetrit, S. Parathyroid hormone stimulates the endothelial expression of vascular endothelial growth factor. *Eur J Clin Invest.* **38**, 798–803 (2008).
20. Prisby, R., Menezes, T. & Campbell, J. Vasodilation to PTH (1–84) in bone arteries is dependent upon the vascular endothelium and is mediated partially via VEGF signaling. *Bone.* **54**, 68–75 (2013).
21. Pepe, J. *et al.* The effect of parathyroid hormone (1–84) treatment on serum bone morphogenetic protein 4 and vascular endothelial growth factor in postmenopausal women with established osteoporosis. *J of Endocrinol Invest.* **40**, 663–667 (2017).
22. Bosworth, C. *et al.* Parathyroid hormone and arterial dysfunction in the Multi-Ethnic Study of Atherosclerosis. *Clin Endocrinol (Oxf).* **79**, 429–436 (2013).
23. Pepe, J. *et al.* High prevalence of abdominal aortic calcification in patients with primary hyperparathyroidism as evaluated by Kauppila score. *Eur J Endocrinol.* **175**, 95–100 (2016).
24. Kelly, R. P., Millasseau, S. C., Ritter, J. M. & Chowienczyk, P. J. Vasoactive drugs influence aortic augmentation index independently of pulse-wave velocity in healthy men. *Hypertension.* **37**, 1429–1433 (2001).
25. Snieder, H. *et al.* Heritability of central systolic pressure augmentation: a twin study. *Hypertension.* **35**, 574–579 (2000).
26. Minisola, S., Pepe, J., Scillitani, A. & Cipriani, C. Explaining geographical variation in the presentation of primary hyperparathyroidism. *Lancet Diabetes Endocrinol.* **4**, 641–643 (2016).
27. De Lucia, F. *et al.* Effect of gender and geographic location on the expression of primary hyperparathyroidism. *J of Endocrinol Invest.* **36**, 123–126 (2013).
28. Buizert, P. J. *et al.* PTH: a new target in arteriosclerosis? *J Clin Endocrinol Metab.* **98**, E1583–1590 (2013).
29. Pepe, J. *et al.* Sporadic and hereditary primary hyperparathyroidism. *J of Endocrinol Invest.* **34**, 40–44 (2011).
30. Montomoli, M. *et al.* Validation of a food frequency questionnaire for nutritional calcium intake assessment in Italian women. *Eur J Clin Nutr.* **56**, 21–30 (2002).
31. Mancia, G. *et al.* 2013 ESH/ESC guidelines for the management of arterial hypertension: the Task Force for the Management of Arterial Hypertension of the European Society of Hypertension (ESH) and of the European Society of Cardiology (ESC). *Eur Heart J.* **34**, 2159–219 (2013).
32. Pepe, J. *et al.* The combination of frax and aging male symptoms scale better identifies treated hiv males at risk for major fracture. *Clin Endocrinol (Oxf).* **77**, 672–678 (2012).
33. Paglia, F. *et al.* Biomarkers of bone turnover after a short period of steroid therapy in elderly men. *Clin Chem.* **47**, 1314–1316 (2001).
34. Pepe, J. *et al.* The effects of alendronate treatment in osteoporotic patients affected by monoclonal gammopathy of undetermined significance. *Calcif Tissue Int.* **82**, 418–426 (2008).
35. Diacinti, D. *et al.* Diagnostic performance of vertebral fracture assessment by the lunar iDXA scanner compared to conventional radiography. *Calcif Tissue Int.* **91**, 335–342 (2012).
36. Cipriani, C. *et al.* Prevalence of kidney stones and vertebral fractures in primary hyperparathyroidism using imaging technology. *J Clin Endocrinol Metab.* **100**, 1309–1315 (2015).
37. Varano, M. *et al.* Comparisons of microvascular and macrovascular changes in aldosteronism-related hypertension and essential hypertension. *Sci Rep.* **7**, 2666 (2017).
38. No author listed, II. The ophthalmoscopic distribution of the retinal vessels in the normal eyeground. *Acta Ophthalmologica* **14**, 12–22 (1936).
39. Hubbard, L. D. *et al.* Methods for evaluation of retinal microvascular abnormalities associated with hypertension/sclerosis in the atherosclerosis risk in communities study. *Ophthalmology.* **106**, 2269–2280 (1999).
40. Leung, H. *et al.* Computer-assisted retinal vessel measurement in an older population: correlation between right and left eyes. *Clin Experiment Ophthalmol.* **31**, 326–330 (2003).

## Author Contributions

(a) Conception and design: M.C. and S.M.; (b) Analysis and interpretation: M.C., S.M., J.P., M.T., C.C., M.C.P. and M.V.; (c) Writing the article: M.C., S.M., J.P., M.T., C.C., M.C.P. and M.V.; (d) Critical revision of the article: M.C., S.M., J.P., M.T., C.C., M.C.P., M.V., F.B. and L.C.; (e) Final approval of the article: M.C., S.M., J.P., M.T., C.C., M.C.P., M.V., F.B. and L.C.; (f) Data Collection: J.P., M.T., F.B. and L.C.; (g) Provision of materials, patients, or resources: M.C., J.P., M.T., C.C., M.C.P., M.V., F.B. and L.C.; (h) Statistical expertise: M.C. and J.P.; (i) Literature search: J.P., F.B. and L.C.

## Additional Information

**Competing Interests:** Dr. Parravano M. is member of Advisory Board Allergan, Bayer and Novartis. Dr. Varano M. is member of Advisory Board Allergan, Bayer and Novartis. The other authors have no competing interests.

**Publisher's note:** Springer Nature remains neutral with regard to jurisdictional claims in published maps and institutional affiliations.



**Open Access** This article is licensed under a Creative Commons Attribution 4.0 International License, which permits use, sharing, adaptation, distribution and reproduction in any medium or format, as long as you give appropriate credit to the original author(s) and the source, provide a link to the Creative Commons license, and indicate if changes were made. The images or other third party material in this article are included in the article's Creative Commons license, unless indicated otherwise in a credit line to the material. If material is not included in the article's Creative Commons license and your intended use is not permitted by statutory regulation or exceeds the permitted use, you will need to obtain permission directly from the copyright holder. To view a copy of this license, visit <http://creativecommons.org/licenses/by/4.0/>.

© The Author(s) 2018