

# **A Fuzzy-QFD approach for the enhancement of work equipment safety: a case study in the agriculture sector**

Mario Fagnoli\*<sup>1</sup>, Mara Lombardi<sup>2</sup>, Nicolas Haber<sup>3</sup>

Faculty of Civil and Industrial Engineering, Sapienza - University of Rome

Via Eudossiana, 18, Rome 00184, Italy

<sup>1</sup> [mario.fagnoli@uniroma1.it](mailto:mario.fagnoli@uniroma1.it); <sup>2</sup> [mara.lombardi@uniroma1.it](mailto:mara.lombardi@uniroma1.it); <sup>3</sup> [nicolas.haber@uniroma1.it](mailto:nicolas.haber@uniroma1.it)

\* Corresponding author

**Mario Fagnoli** is currently employed at the Italian Ministry of Agriculture as Technical Director and collaborates with Sapienza - University of Rome as Adjunct Professor since 2012. He worked at the Department of Precision Machinery of the University of Tokyo as JSPS Fellow Researcher from 2005 to 2007. He earned both his MD and PhD at Sapienza - University of Rome. His research interests and publications mainly concern design for safety, machinery safety, product-service systems, ecodesign as well as engineering design tools and methods.

**Mara Lombardi** is Assistant Professor at Sapienza - University of Rome, where she earned both master degree and PhD at the Department of Civil and Industrial Engineering. She is the Coordinator of the courses in Safety Engineering of the Sapienza - University of Rome. Her research activities and scientific publications mainly concern: Construction site safety; Fire Safety Engineering; Occupational Health and Safety; Risk Analysis; Safety engineering.

**Nicolas Haber** is an Industrial Engineer holding a PhD in Industrial Engineering and Engineering Management from Sapienza - University of Rome which he earned in 2017. His field of research is the design of product-service systems in a sustainable manner. He holds master's degrees in mechatronics engineering and industrial engineering management. Moreover, he has two years' experience at Heineken and obtained the 6-Sigma black belt certificate.

## **Abstract**

The paper proposes a design for safety methodology based on the use of the Quality Function Deployment (QFD) method, focusing on the need to identify and analyse risks related to a working task in an effective manner, i.e. considering the specific work activities related to such a task. To reduce the drawbacks of subjectivity while augmenting the consistency of judgements, the QFD was augmented by both the Delphi method and the Fuzzy Logic approach. To verify such an approach, it was implemented through a case study in the agricultural sector. While the proposed approach needs to be validated through further studies in different contexts, its positive results in performing hazard analysis and risk assessment in a comprehensive and thorough manner can

contribute practically to the scientific knowledge on the application of QFD in design for safety activities.

Keywords: Design for safety, risk assessment, hazard analysis, Quality Function Deployment, fuzzy logic, agricultural machinery.

## **1. Introduction**

The great popularity achieved by the Quality Function Deployment (QFD) method (Akao, 1990; ReVelle et al., 1998) in product development activities is due to its ability to allow engineers to translate customers' need into engineers' metrics effectively. The core of the method is based on the use of the House of Quality (HoQ), and a large number of studies focused on its use in different ambits, as for example (Carnevalli and Miguel, 2008; Shiu et al., 2013; Sivasamy et al., 2016; Vinayak and Kodali, 2012). In recent years, the use of QFD in specific fields of product development and assessment has been augmented, focusing on the solution of specific design problems, such as environmental, ergonomics, reliability, or safety concerns (Fargnoli and Sakao, 2017; Liu and Tsai, 2012; Younesi and Roghanian, 2015; Zhang et al., 2014).

In this study we focused our attention on the application of QFD in the Design for Safety field, where some examples can be found in literature e.g. (Bas, 2014; Fargnoli et al., 2012; Marsot, 2005). In particular, Bas (2014) argued that QFD can be used for risk assessment activities since it allows the definition of weighted importance scores to risks in a step-by-step manner starting from the tasks performed. In this study a three-phase model is proposed to consider the interrelationships between tasks and hazards, hazards and events, as well as events with preventive and protective measures. On one hand, such an approach certainly presents a complete

risk assessment procedure, given that the events' importance factors are computed considering the probability of occurrence and the expected consequences of an event. On the other hand, the validation of this procedure through a real case study was not performed, while the use of the Delphi method (Buckley, 1994) to gather views from different experts, as well as the use of the Fuzzy Logic approach (Temponi et al., 1999) was suggested to augment the model effectiveness. Accordingly, Sadeghi et al. (2016) addressed different types of QFD-based models in a design for safety framework. This analysis focused on the goal of the different approaches of QFD applied in the safety science field, remarking that they generally lack in considering work situations in a proper manner. At a more practical level, such a need has been also remarked by several studies. For example, Gangolells et al. (2010) and Zhou et al. (2015) remarked the lack of construction safety research on the specific working tasks, while similar concerns were addressed in the field of agriculture and forestry activities by (Fargnoli et al., 2010; Poje et al., 2016; Taattola et al., 2012; Fargnoli and Lombardi, 2018). This aspect is particularly relevant when considering the usage of a work equipment, since all the activities related to its use should be analysed during the risk assessment activities (Sadeghi et al., 2017).

On these research hints, the present study proposes a comprehensive design for safety methodology based on the use of QFD, which is aimed at dealing with the above-mentioned shortcomings. More in detail, we tried to augment the framework proposed by Bas (2014) with these goals in mind:

- To develop a procedure able to identify and analyse risks related to a working task (e.g. the use of a work equipment) more effectively, adapting such a framework as to include specific work activities related to such a task;

- To reduce the drawbacks of subjectivity while augmenting the consistency of judgements when performing hazard analysis and risk assessment.

Hence, the remainder of the paper is organized as follows. A background analysis is portrayed in Section 2, while Section 3 presents the main characteristics of the proposed methodology. The effectiveness of such an approach is demonstrated in Section 4 through its application to a real case study. The obtained results are discussed in Section 5, while Section 6 concludes the paper addressing future work.

## **2. Research background and motivations**

### **2.1. Traditional Quality Function Deployment**

Before analyzing the new developments of the method in the ambit of safety research, in this section a brief description of the traditional QFD is given, bringing to light its main characteristics while more detailed information can be found in the plethora of studies presented in literature, e.g. in (Carnevalli and Miguel, 2008; Chan and Wu, 2002; Mehrjerdi, 2010; Vinayak and Kodali, 2013). The core of the method is certainly the so-called “House of Quality” (HoQ), whose innermost part is represented by the relationship matrix (Figure 1), which in the HoQ links customer needs and expectations (i.e. the so-called Customer Requirements (CRs)) to appropriate technical attributes (i.e. the Engineering Characteristics (ECs)), providing their assessment and prioritization (Franceschini and Maisano, 2015).

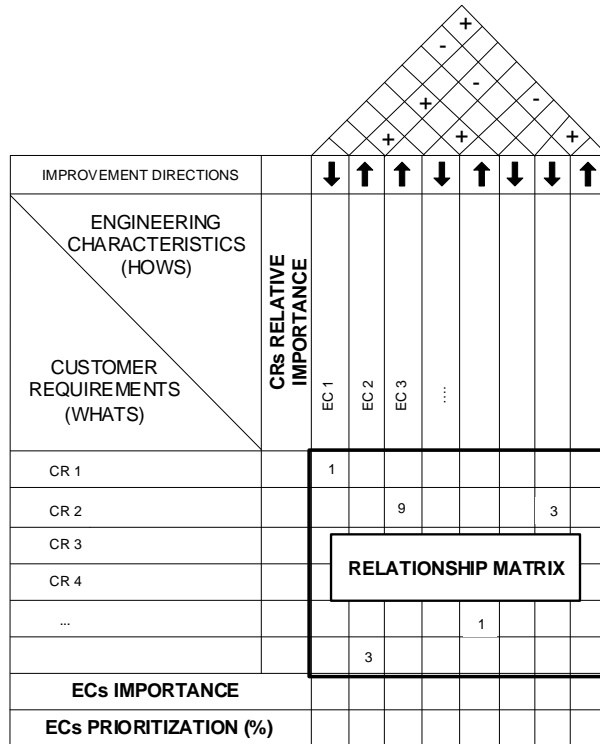


Figure 1. Traditional House of Quality (HoQ).

Based on this, different models of QFD have been proposed, starting from the simplest four-phase model (ReVelle et al. 1998; Shiu et al., 2013), where each step is characterized by a specific House of Quality (HoQ) as shown in Figure 2.

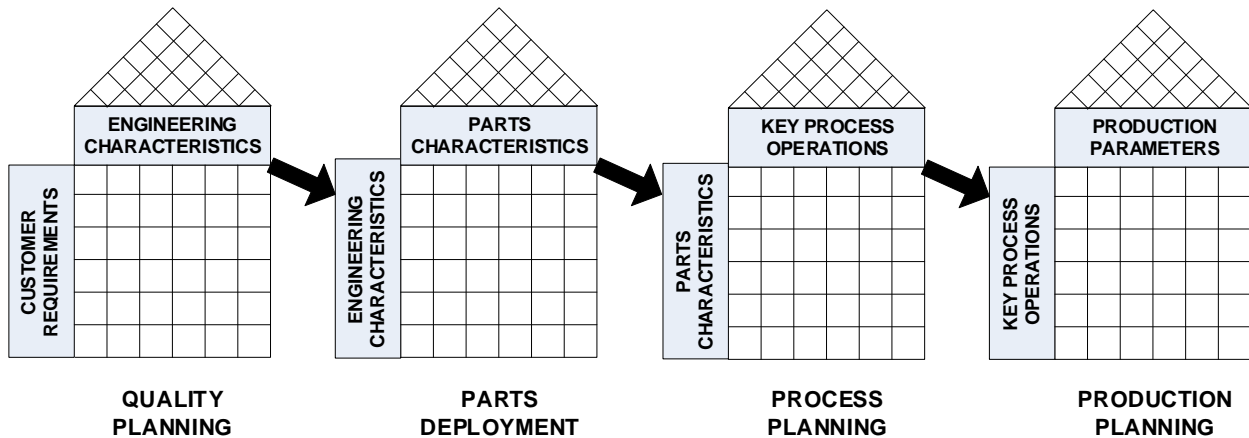


Figure 2. Traditional QFD four-phase model.

Without going into details (due to space constrain and to retain focus), two main aspects can be

underlined when considering the use of QFD. On one hand, the use of the QFD during design activities need to be addressed. In fact, while the traditional approach can follow the phases of a conventional design process (Fargnoli and Sakao 2017), most of applications do not consider all the four phases illustrated in Figure 2, but mainly concern the use of the first HoQ and its extensions at the beginning of the design process (Vinayak and Kodali, 2012), focusing on the identification of customer requirements and their prioritization (Franceschini et al., 2015; Kamvysi et al., 2014).

Secondly, it has to point out that results provided by the HoQ are of a qualitative nature and this can lead to an incorrect assessment of a characteristic/attribute of the system being analysed. Such a limitation concerns both the input data (i.e. the definition of customer needs and their level of importance), as well as the assessment of the ECs (Carnevalli et al., 2010; Franceschini and Maisano, 2015).

To reduce these drawbacks the prevailing literature (i.e. Carnevalli and Miguel 2008; ; Kahraman et al., 2006; Sivasamy et al., 2016; Temponi et al., 1999; Vinayak and Kodali 2013; Zare Mehrjerdi 2010; Zhang et al. 2015), agrees on recognizing that one of the most effective ways to improve the effectiveness of QFD consists in understanding the customers' needs in a more effective manner, as well as in rating the customers' preferences as accurately as possible by means of HoQ's supporting tools, such as:

- The Analytic Hierarchy Process (AHP) and the Analytic Network Process (ANP) methods, which allow the selection of the optimal solution to a complex problem by decomposing it in a systematic and hierarchical manner (Patriarca et al., 2016; Ho, 2012; Saaty, 1990; Saaty and Sodenkamp, 2008).
- The Kano Model to define the requirements that can effectively increase value for

customers (Kano, 1984; Tontini, 2007).

- An ordering based decision making approach based on the Yager’s theory of aggregation to aggregate the CRs’ judgments into a continuous interval scale (Chen et al., 2013; Franceschini and Maisano, 2015; Wang and Tseng, 2011; Yager, 1993; Zheng et al., 2016).
- The Fuzzy logic sets to deal with the uncertainty given by the imprecision and vagueness of the qualitative and subjective definitions of CRs (Abdolshah and Moradi, 2013; Kamvysi et al., 2014; Patriarca et al., 2016).

## 2.2. Quality Function Deployment in safety research

As argued by Fargnoli and Sakao (2017) few studies addressed the use of QFD in safety research, mostly consisting in including safety requirements into customer expectations and needs (Fargnoli et al., 2012; Marsot, 2005). Differently from such a conventional approach, both (Liu and Tsai, 2012) and (Bas, 2014) proposed novel methods based on the “cause-effect” mechanism of the HoQ. The former consists in a two-phase method aimed at assessing the relationships among construction items (first phase), and hazard types and hazard causes (second phase); instead, the latter uses three HoQs to consider the relationships between tasks and hazards, hazards and events, and events compared with preventive and protective measures (Figure 3).

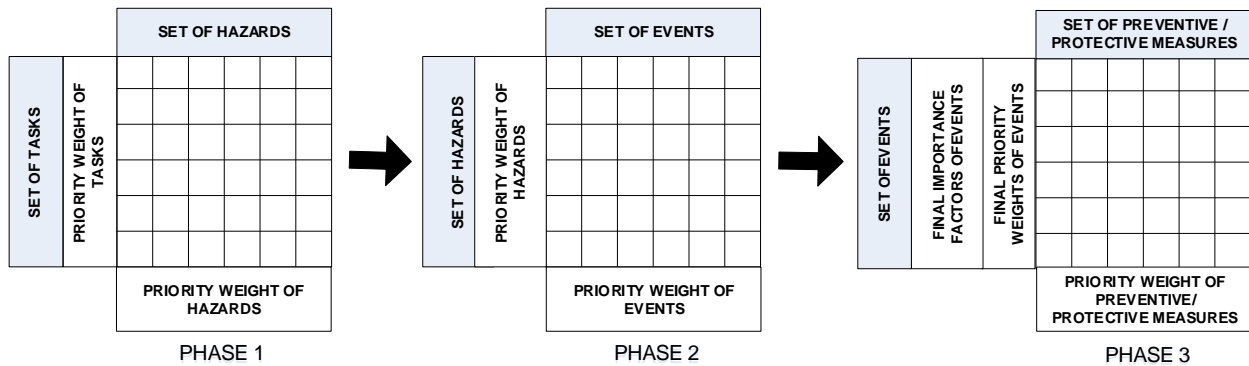


Figure 3. Scheme of the approach proposed by Bas (2014).

More in detail, this framework presents a more complete risk assessment procedure, since:

- It allows the analysis and evaluation of the influence that a certain hazard can have on different types of events, as well as the effect that a preventive/protective measure can have on more than one hazardous event;
- The final priority weight of events (in the third phase) is computed taking into account the probability of occurrence, the expected economic cost of each event, and the expected consequences of events.

Nevertheless, these studies (Liu and Tsai, 2012; Bas 2014) take into account only general tasks while the analysis of specific activities related to a single task (e.g. the use of a work equipment considering all the activities related to its practical utilization) is not included. Hence, they can be used only at a general level, when operations' planning is carried out. In fact, they provide insufficient information to perform risk assessment in a practical context, where work activities need to be evaluated more in detail, especially when the safety level of machinery or work equipment has to be assessed and augmented (Hale, 2007; Rausand and Utne, 2009). Thus, when considering the design activities, they ought to be applied during the detailed design stages of the design process, as suggested by (Sadeghi et al., 2016).

### **2.3. Research issues**

On these considerations, it emerges that the use of a QFD based approach in the design for safety context can be beneficial thanks to its ability in determining cause-effect inter-relationships, and assigning weight to each item when performing risk assessment (Liu et al., 2009). In particular, the framework proposed by Bas (2014) can allow engineers to carry out risk assessment in a thorough manner suggesting them the preventive/protective interventions that have effect on



multiple events. Nevertheless, such an approach lacks in addressing the analysis on specific work situations, considering that to properly enhance the safety level of a work task designers need to focus on what will be performed by the operators (the activities), which is often very different from what they have imagined and stipulated (the task), as stressed by Lux et al. (2016). This is particularly true when considering the use of a work equipment (Hasan et al., 2003; Khanzode et al., 2012; De Galvez et al., 2016).

Hence, to limit the drawbacks discussed in the previous sections, this framework needs to be augmented addressing both: the reduction of the imprecision and vagueness of the qualitative and subjective nature of the HoQ's data, as well as the analysis of detailed work activities, to provide effective information for enhancing the safety level practically.

### **3. Research approach**

With this aim in mind, the proposed methodology relies on the approach proposed by Bas (2014) augmented as showed in Figure 4, where to fulfil the HoQ:

- Interviews with experts and operators are needed to define both the CRs and the ECs.
- The Delphi method is used to collect the scores of the relationships matrix by means of semi-structured questionnaires; the results are then “filtered” by the use of the fuzzy logic.

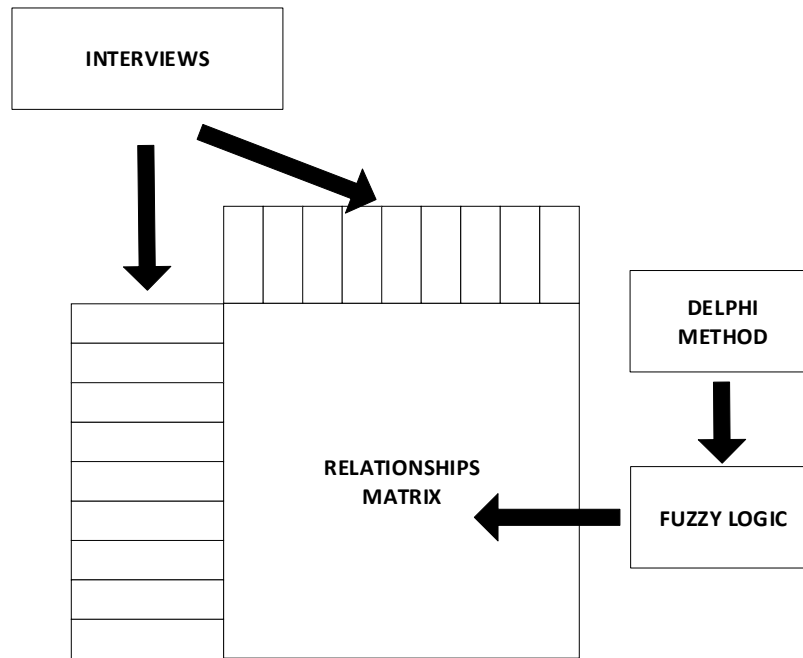


Figure 4. Scheme of the proposed HoQ's assessment approach.

Hence, the method proposed by Bas (2014) was augmented as follows:

- In the first HoQ the specific activities related to a general task are considered: for instance, if the analysis concerns the use of an agricultural tractor, all the work situations related to its use in a specific context should be considered, including the setting and maintenance operations.
- The interviews with experts and operators allows engineers to better define the inputs and outputs of each HoQ, i.e. the list of the activities, of hazards, of hazardous events, as well as of the preventive and protective measures.
- The combined use of the Delphi method and fuzzy logic allows a more objective assessment, reducing imprecisions and vagueness of the scoring system.

As per the scoring system used in the different HoQs, we followed the rules provided by Bas (2014), and in particular:

1. HoQ I (activities and hazards relationships evaluation): 0 (no relationship); 3 (weak relationship); 9 (strong relationship).
2. HoQ II (hazards and events relationships evaluation): 0 (no relationship); 3 (weak relationship); 9 (strong relationship).
3. HoQ III (comparison of the events with the preventive and protective measures): 0 (no relationship); 3 (weak relationship); 6 (medium relationship); 9 (strong relationship).

Consequently, to apply the fuzzy logic for the first two HoQs, we adapted the conversion values proposed by Vinodh et al. (2017) as shown in Table 1. More in detail, to transform the crisp CRs' importance ratings and relationships scores into fuzzy numbers, the use of triangular fuzzy numbers (TFNs) (Kaharaman et al., 2006) was considered. These TFNs are represented by the parameters  $(l, m, u)$ , where, in accordance with (Zaim et al., 2014), they namely refer to the smallest possible value ( $l$ ), the most promising value ( $m$ ), and the largest possible value ( $u$ ).

Table 1. Fuzzy relationship scores for HoQ I and HoQ II (adapted from Vinodh et al., (2017)).

	CRISP SCORE	TRIANGULAR FUZZY NUMBER EQUIVALENT		
		Lower value ( $l$ )	Middle value ( $m$ )	Upper value ( $u$ )
No relationship	0	0	0	0
Weak relationship	3	0.1	0.3	0.5
Strong relationship	9	0.7	1	1

Instead, for the third HoQ the degrees of relationships adopted are depicted in Table 2.

Table 2. Fuzzy relationship scores for HoQ III (adapted from Vinodh et al., (2017)).

	CRISP SCORE	TRIANGULAR FUZZY NUMBER EQUIVALENT		
		Lower value ( <i>l</i> )	Middle value ( <i>m</i> )	Upper value ( <i>u</i> )
No relationship	0	0	0	0
Weak relationship	3	0	0,3	0,5
Medium relationship	6	0.5	0.7	0.9
Strong relationship	9	0.9	1	1

Accordingly, to obtain the final crisp values the equation proposed by Vinodh and Chintla (2011) is used:

$$S_{crisp} = \frac{l+2m+u}{4} \quad (1)$$

Where, as previously discussed, *l*, *m* and *u* are lower, middle and upper limits of the fuzzy score.

#### 4. Case study

To validate such an approach, the methodology was applied in a practical case study concerning the risk assessment of work activities related to the use of a wheeled agricultural tractor and its equipment (e.g. plough, ripper, trailers, etc.). The study was carried out in collaboration with a company that produces barley and wheat and uses a medium sized cabin tractor (80 kW). As for the group of experts who supported us, 10 technicians belonging to the Italian Workers' Compensation Authority (INAIL), the Italian Association of Dealers of Agricultural Machinery (UNACMA), and the Italian Federation of Agro-mechanics and Farmers (CAI-Agromecc) were involved, as well as the company manager and the tractor users.

##### 4.1. Data collection

Interview with experts and users were carried out in order to define the different lists of the activities, hazards, hazardous events, and preventive and protective measures (Table 3 and Table 4).

Table 3. List of the activities (A), hazards (H) and events considered in the analysis.

ACTIVITIES	HAZARDS	EVENTS
A1 - Setting	H1 - Machinery mobility	E1 - Contact with high temperature parts
A2-Trailing	H2 - Moving elements	E2 - Contact with cutting parts
A3- Ripping	H3- Thermal hazards	E3 – Discomfort (muscular problems)
A4 - Plowing	H4 - Stability (machinery)	E4 -Loss of stability
A5 - Tilling	H5 - Environment (dust, heat, gradient)	E5 - Contact with ejected objects
A6 - Shredding	H6 – Noise/Vibrations	E6 - Exposure to noise
A7 -Sowing	H7 - Approach of a moving element to a fixed part	E7 - Exposure to vibrations
A8- Mowing	H8 - Ergonomic (access)	E8 -Slipping, falling
A9- Baling	H9 - Ergonomic (posture, commands)	E9 - Impacts with moving parts
	H10 - Combination (stress)	E10 - Crushing, entanglement
		E11 - Impacts with falling objects

Table 4. List of the preventive and protective measures considered in the analysis.

PREVENTIVE AND PROTECTIVE MEASURES	
P1 - Mower's guards	P11 -Seat's restraint system
P2 - Transmission belt protection	P12 - Mechanical block/unblock of parking
P3 - Protection of the gearbox	P13 - On/Off locking differential system
P4 - Access handles	P14 - Safety instructions (tractor and equipment)
P5 - Roll-over protective structure (ROPS)/cabin	P15 - PPE (Personal protective equipment)
P6 - Anti-vibration seat	P16 – Shredder and other equipment guards
P7 - Adequate muffler	P17 – Power take-off (PTO) protection
P8 - Cabin filters	P18 – Falling object protective structure (FOPS)
P9 - Seat's "dead-man switch"	P19 - Acoustic warning device
P10 - Seat's adjustment leverages	P20 – Information/Instructions

#### 4.2. HoQ I

In this phase the relationships between the work activities (A) and the hazards (H) are evaluated.

It has to point out that, following the procedure proposed by Bas (2014), the importance level of

the activities (e.g. the priority weight) was assumed as  $t = 1/9$  (since 9 different activities were considered) given that all the activities are required to accomplish the overall task, i.e. “use of the tractor”. The output of this phase consists in the evaluation of the priority weight of the hazards, as shown in Table 5.

Table 5. Results of the HoQ I.

	H1			H2			H3			H4			H5			H6			H7			H8			H9			H10		
	<i>l</i>	<i>m</i>	<i>u</i>	<i>l</i>	<i>m</i>	<i>u</i>	<i>l</i>	<i>m</i>	<i>u</i>	<i>l</i>	<i>m</i>	<i>u</i>	<i>l</i>	<i>m</i>	<i>u</i>	<i>l</i>	<i>m</i>	<i>u</i>	<i>l</i>	<i>m</i>	<i>u</i>	<i>l</i>	<i>m</i>	<i>u</i>	<i>l</i>	<i>m</i>	<i>u</i>	<i>l</i>	<i>m</i>	<i>u</i>
<b>A1</b>	0,01	0,04	0,06	0,18	0,39	0,56	0,21	0,36	0,44	0,01	0,04	0,06	0,13	0,24	0,31	0,09	0,13	0,13	0,00	0,00	0,00	0,31	0,53	0,63	0,40	0,65	0,75	0,14	0,28	0,38
<b>A2</b>	0,63	0,91	0,94	0,04	0,11	0,19	0,00	0,00	0,00	0,70	1,00	1,00	0,04	0,11	0,19	0,10	0,30	0,50	0,18	0,39	0,56	0,39	0,61	0,69	0,24	0,44	0,56	0,15	0,31	0,44
<b>A3</b>	0,31	0,53	0,63	0,28	0,41	0,44	0,00	0,00	0,00	0,33	0,56	0,69	0,55	0,83	0,88	0,33	0,56	0,69	0,70	1,00	1,00	0,09	0,26	0,44	0,25	0,48	0,63	0,04	0,11	0,19
<b>A4</b>	0,40	0,65	0,75	0,28	0,41	0,44	0,00	0,00	0,00	0,40	0,65	0,75	0,33	0,56	0,69	0,40	0,65	0,75	0,70	1,00	1,00	0,18	0,39	0,56	0,25	0,48	0,63	0,05	0,15	0,25
<b>A5</b>	0,31	0,53	0,63	0,13	0,24	0,31	0,00	0,00	0,00	0,33	0,56	0,69	0,33	0,56	0,69	0,40	0,65	0,75	0,70	1,00	1,00	0,09	0,26	0,44	0,10	0,30	0,50	0,05	0,15	0,25
<b>A6</b>	0,31	0,53	0,63	0,28	0,41	0,44	0,00	0,00	0,00	0,33	0,56	0,69	0,33	0,56	0,69	0,33	0,56	0,69	0,70	1,00	1,00	0,09	0,26	0,44	0,10	0,30	0,50	0,05	0,15	0,25
<b>A7</b>	0,33	0,56	0,69	0,13	0,24	0,31	0,04	0,11	0,19	0,33	0,56	0,69	0,18	0,39	0,56	0,10	0,30	0,50	0,25	0,48	0,63	0,10	0,30	0,50	0,10	0,30	0,50	0,05	0,15	0,25
<b>A8</b>	0,33	0,56	0,69	0,35	0,50	0,50	0,00	0,00	0,00	0,29	0,45	0,50	0,39	0,61	0,69	0,33	0,56	0,69	0,33	0,56	0,69	0,10	0,30	0,50	0,40	0,65	0,75	0,05	0,15	0,25
<b>A9</b>	0,63	0,91	0,94	0,14	0,28	0,38	0,04	0,11	0,19	0,29	0,45	0,50	0,31	0,53	0,63	0,29	0,45	0,50	0,63	0,91	0,94	0,31	0,53	0,63	0,39	0,61	0,69	0,24	0,44	0,56
<b>Fuzzy Imp.</b>	0,33	0,52	0,59	0,18	0,30	0,36	0,03	0,06	0,08	0,30	0,48	0,56	0,26	0,44	0,53	0,24	0,42	0,52	0,42	0,63	0,68	0,17	0,34	0,48	0,22	0,42	0,55	0,08	0,19	0,28
<b>Crisp Imp.</b>	0,50			0,29			0,06			0,47			0,42			0,40			0,61			0,34			0,41			0,19		
<b>Relative Imp.</b>	13,6%			7,8%			1,6%			12,7%			11,5%			11,0%			16,5%			9,2%			11,1%			5,1%		
<b>Rank</b>	2			8			10			3			4			6			1			7			5			9		

### 4.3. HoQ II

The second HoQ allows the assessment of the relationships between the hazards (H) and the events (E), i.e. the hazardous situations that may occur while operating a tractor, providing the priority weight of the latter. In Table 6 an excerpt of the HoQ II is shown.

Table 6. Excerpt of the HoQ II's relationship matrix.

	E1			E2			E3			E4			E5			E6			E7		
	<i>l</i>	<i>m</i>	<i>u</i>	<i>l</i>	<i>m</i>	<i>u</i>	<i>l</i>	<i>m</i>	<i>u</i>	<i>l</i>	<i>m</i>	<i>u</i>	<i>l</i>	<i>m</i>	<i>u</i>	<i>l</i>	<i>m</i>	<i>u</i>	<i>l</i>	<i>m</i>	<i>u</i>
<b>H1</b>	0,00	0,00	0,00	0,15	0,25	0,35	0,00	0,00	0,00	0,70	1,00	1,00	0,20	0,31	0,39	0,50	0,75	0,85	0,50	0,75	0,85
<b>H2</b>	0,50	0,75	0,85	0,70	1,00	1,00	0,15	0,25	0,35	0,00	0,00	0,00	0,20	0,31	0,39	0,34	0,50	0,55	0,29	0,44	0,51
<b>H3</b>	0,00	0,00	0,00	0,00	0,00	0,00	0,70	1,00	1,00	0,09	0,13	0,13	0,19	0,31	0,44	0,00	0,00	0,00	0,00	0,00	0,00
<b>H4</b>	0,08	0,13	0,18	0,08	0,13	0,18	0,08	0,13	0,18	0,61	0,88	0,88	0,15	0,25	0,35	0,04	0,06	0,09	0,00	0,00	0,00
<b>H5</b>	0,04	0,06	0,09	0,04	0,06	0,09	0,09	0,13	0,13	0,15	0,25	0,35	0,15	0,25	0,35	0,00	0,00	0,00	0,00	0,00	0,00
<b>H6</b>	0,04	0,06	0,09	0,04	0,06	0,09	0,00	0,00	0,00	0,04	0,06	0,09	0,04	0,06	0,09	0,26	0,38	0,38	0,44	0,63	0,63
<b>H7</b>	0,00	0,00	0,00	0,04	0,06	0,09	0,00	0,00	0,00	0,04	0,06	0,09	0,15	0,25	0,35	0,44	0,63	0,63	0,30	0,44	0,46
<b>H8</b>	0,04	0,06	0,09	0,11	0,19	0,26	0,33	0,50	0,60	0,09	0,13	0,13	0,39	0,56	0,59	0,09	0,13	0,13	0,04	0,06	0,09
<b>H9</b>	0,15	0,25	0,35	0,19	0,31	0,44	0,04	0,06	0,09	0,04	0,06	0,09	0,39	0,56	0,59	0,19	0,31	0,44	0,19	0,31	0,44
<b>H10</b>	0,35	0,50	0,50	0,35	0,50	0,50	0,00	0,00	0,00	0,15	0,25	0,35	0,19	0,31	0,44	0,09	0,13	0,13	0,09	0,13	0,13
<b>Fuzzy Imp.</b>	0,20	0,56	0,87	0,32	0,88	1,33	0,15	0,45	0,71	0,51	1,25	1,60	0,44	1,20	1,83	0,57	1,38	1,76	0,52	1,28	1,69
<b>Crisp Imp.</b>	0,55			0,86			0,44			1,18			1,18			1,31			1,22		
<b>Rel. Imp.</b>	0,05			0,07			0,03			0,10			0,10			0,11			0,10		
<b>Rank</b>	10			8			11			6			7			4			5		

### 4.4. HoQ III

The last HoQ provides an evaluation of the preventive and protective measures (Table 7). It has to point out that, differently from Bas (2014), in this phase to calculate the final priority weight of the events  $w_i$ , we adopted a simplified equation:

$$w_i = w_{ei} * (O_{ei} * S_{ei})$$

where:



$o_{ei}$  = probability of occurrence of the event  $e_i$  ;

$s_{ei}$  = expected severity of the event  $e_i$  ;

$w_{ei}$  = priority weight of the event  $e_i$  derived from HoQ II.

In detail, the group of experts was asked to estimate both the probability of occurrence and the expected severity by means of a Likert scale (Likert, 1932) of 1 to 5 as shown in Table 7, where the values for the transformation of crisp numbers into fuzzy triangular numbers are also reported (Vinodh et al., 2017). An excerpt of the HoQ III is reported in Table 8.

Table 7. Crisp to fuzzy conversion (adapted from Vinodh et al. (2017)).

Severity of injuries	Probability (Likelihood level)	LIKERT SCALE	TRIANGULAR FUZZY NUMBER EQUIVALENT		
			Lower value ( <i>l</i> )	Middle value ( <i>m</i> )	Upper value ( <i>u</i> )
Very minor	Very low	1	0	0	0.3
Minor	Low	2	0.1	0.3	0.5
Moderate	Medium	3	0.3	0.5	0.7
Severe	High	4	0.5	0.7	0.9
Unsurvivable	Very high	5	0.7	1	1

Table 8. Excerpt pf the HoQ III's relationship matrix.

	P1			P2			P3			P4			P5		
	<i>l</i>	<i>m</i>	<i>u</i>	<i>l</i>	<i>m</i>	<i>u</i>	<i>l</i>	<i>m</i>	<i>u</i>	<i>l</i>	<i>m</i>	<i>u</i>	<i>l</i>	<i>m</i>	<i>u</i>
<b>E1</b>	0,00	0,00	0,00	0,19	0,26	0,26	0,24	0,34	0,34	0,00	0,08	0,08	0,00	0,00	0,00
<b>E2</b>	0,69	0,80	0,80	0,69	0,80	0,80	0,24	0,34	0,34	0,00	0,00	0,00	0,00	0,00	0,00
<b>E3</b>	0,00	0,00	0,00	0,00	0,00	0,00	0,63	0,71	0,71	0,11	0,13	0,13	0,00	0,04	0,04
<b>E4</b>	0,00	0,00	0,00	0,00	0,00	0,00	0,00	0,00	0,00	0,06	0,16	0,16	0,34	0,53	0,53
<b>E5</b>	0,00	0,00	0,00	0,00	0,00	0,00	0,00	0,00	0,00	0,00	0,00	0,00	0,00	0,15	0,15
<b>E6</b>	0,00	0,00	0,00	0,00	0,00	0,00	0,00	0,04	0,04	0,00	0,00	0,00	0,00	0,04	0,04
<b>E7</b>	0,00	0,00	0,00	0,00	0,00	0,00	0,00	0,04	0,04	0,00	0,00	0,00	0,00	0,04	0,04
<b>E8</b>	0,00	0,00	0,00	0,00	0,00	0,00	0,00	0,04	0,04	0,75	0,89	0,89	0,11	0,13	0,13
<b>E9</b>	0,00	0,00	0,00	0,00	0,00	0,00	0,00	0,00	0,00	0,11	0,20	0,20	0,45	0,50	0,50
<b>E10</b>	0,00	0,00	0,00	0,00	0,00	0,00	0,00	0,00	0,00	0,06	0,09	0,09	0,45	0,61	0,61
<b>E11</b>	0,00	0,00	0,00	0,00	0,00	0,00	0,00	0,00	0,00	0,00	0,00	0,00	0,00	0,19	0,19
<b>Fuzzy Imp.</b>	0,70	2,23	3,37	0,74	2,38	3,60	0,29	1,14	1,73	0,15	0,94	1,22	0,74	2,78	3,57
<b>Crisp Imp.</b>	2,13			2,27			1,08			0,81			2,47		
<b>Rel. Imp.</b>	6,5%			6,9%			3,3%			2,5%			7,5%		
<b>Rank</b>	7			6			11			12			4		

## 5. Discussion of results

The results achieved by means of the proposed procedure are summarized in Figure 5 (where the prioritization of hazards is shown), Figure 6 (concerning the prioritization of events), and Figure 7 (where the relative importance of the preventive and protective measures is shown).

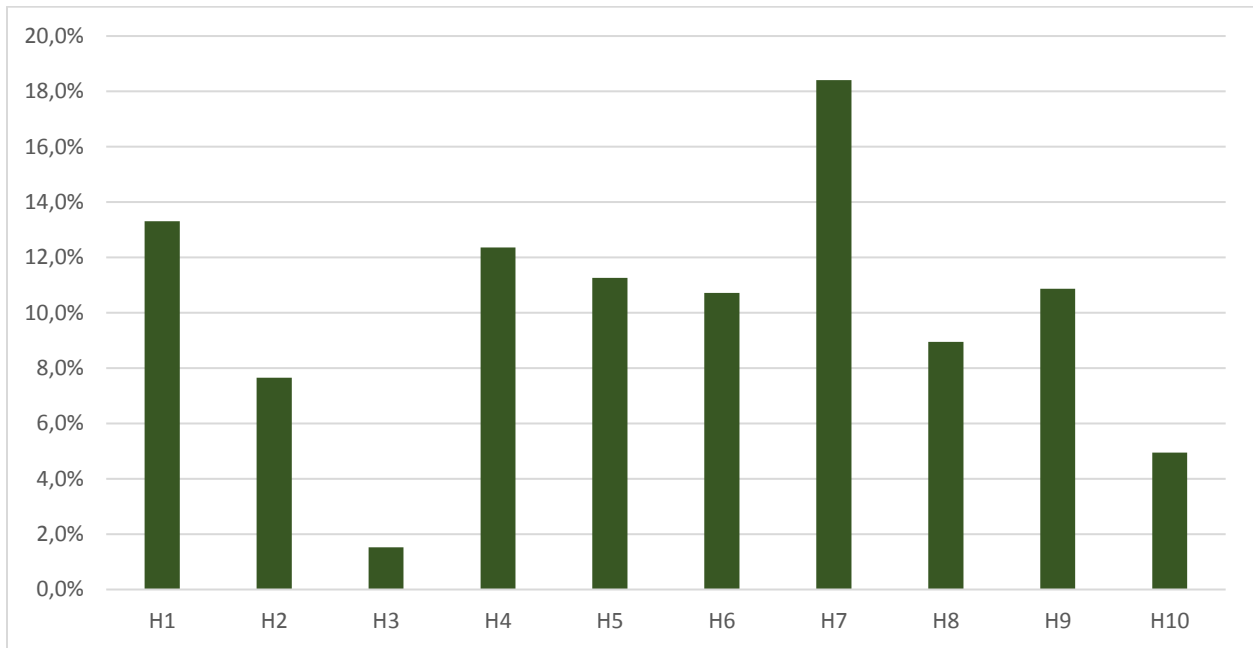


Figure 5. Prioritization of hazards.

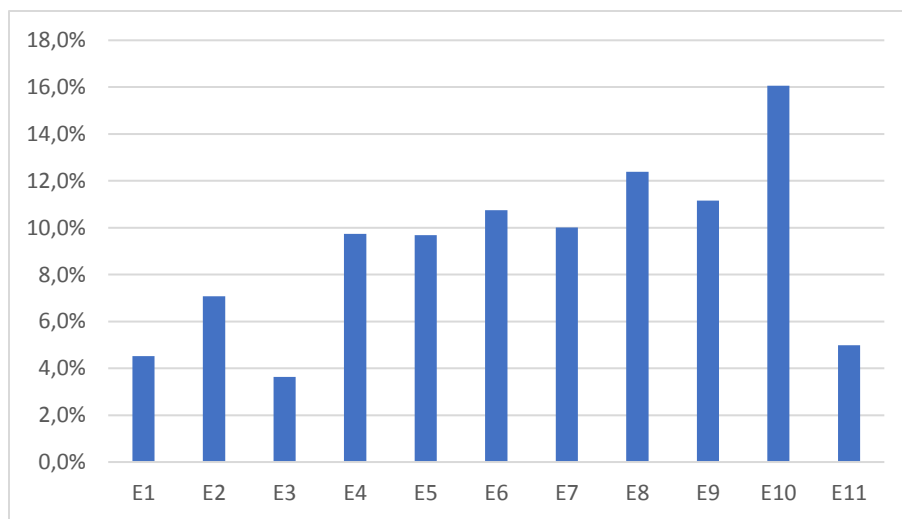


Figure 6. Prioritization of events.

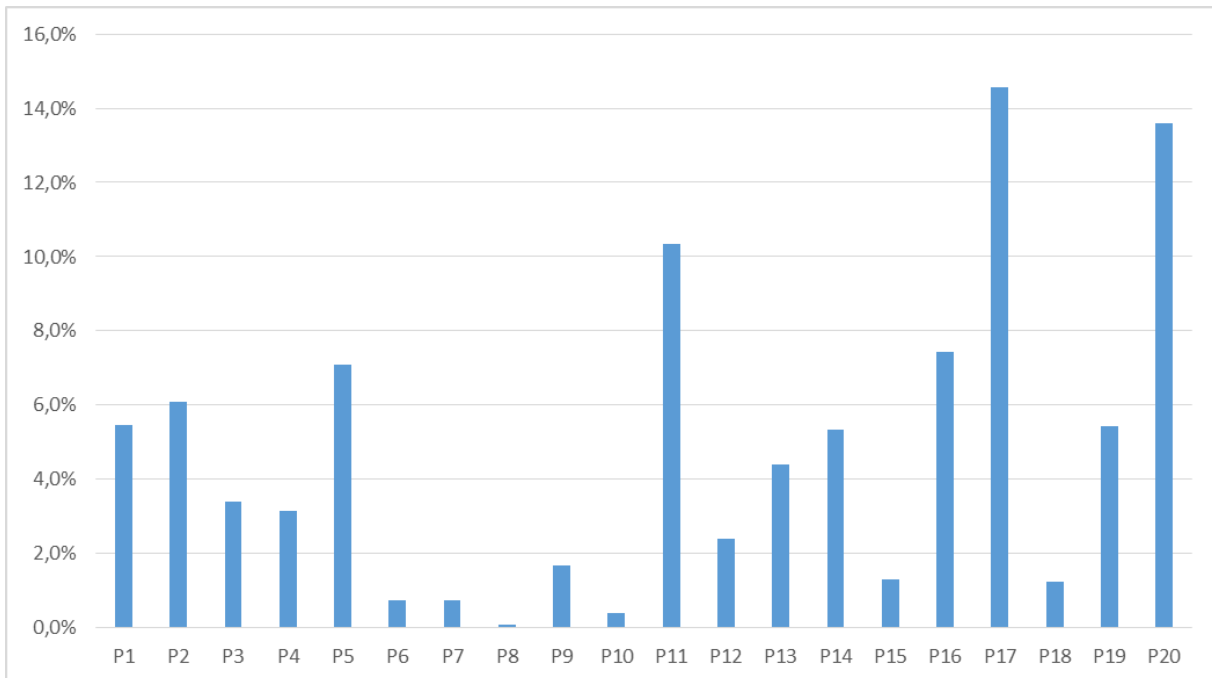


Figure 7. Prioritization of the preventive and protective measures.

From these data, it resulted that the most relevant priorities namely concern:

- The need of a proper protection of the PTO (power take-off) shaft (Figure 8);
- The provision of both safety pictograms and instructions for the tractor and for some equipment;
- The provision of a conformity certificate for the cabin (purchased on the aftermarket) and the ROPS; and
- The provision of seat's belt with a proper anchorage.



Figure 8. Detail of the tractor's PTO.

The priority of interventions reflects the practical safety level of the tractor and other equipment used by the company. In particular, while problems related to the PTO protection, the seat's restraint system and the handles are quite common in this sector (Kumar et al., 2000), the compatibility of the ROPS with the aftermarket cabin, as well as the lack of pictograms and other information systems (especially when connecting the tractor with other equipment) are rarely considered important when performing risk assessment (Caffaro and Cavallo, 2015).

These concerns are also due to the complex legislative framework in this sector (Fagnoli et al., 2010), obliging both designers and safety managers to consider a great number of parameters and constraints. In fact, when performing risk assessment several legislative sources of different nature need to be taken into account (e.g. in the European Union: the “tractor directive” 2003/37/EC (EC 2003) or the Regulation (EU) n. 167/2013 (EU, 2013); the “machinery directive” 2006/42/EC (EC, 2006) for certain requirements of tractors already in use; the “OHS Framework Directive” 89/391/EEC (EEC, 1989) for what concerns safety requirements of work equipment; the OECD Standard Codes for constructive requirements of agricultural and forestry tractors (OECD, 2017)).

Consequently, most of the companies operating in agricultural sector often have problems in the proper management of safety issues due to the lack of sufficient resources (Hasle and Limborg, 2006; Micheli and Cagno, 2010; Fagnoli et al., 2012; Kines et al., 2013; Cavallo et al., 2014).

Moreover, also problems related to hazardous events that might lead to minor injuries emerged from the analysis (for instance “slipping and falling” or “impacts with moving parts”). As in other similar sectors (e.g. the construction industry (Kines et al., 2007; Fagnoli et al., 2011)), accidents with minor consequences are often underestimated or neglected and official accident statistics provide incomplete information on them (Caffaro et al., 2017; Rautiainen et al., 2008). Hence, the results obtained underline the effectiveness of the proposed approach in handling the embedded complexities of risk assessment in this sector, allowing us to analyze in a comprehensive manner safety aspects related to different standpoints.

This output is in line with research clues provided by Underwood and Waterson (2013) and shows that the proposed approach can be considered as a possible answer to the need for a holistic approach to perform risk assessment of activities related to the use of a work equipment, enabling the identification and analysis of the interactions among different agents (operators, technical systems, working environment), as suggested by several authors as for example (Rausand and Utne, 2009; Sadeghi et al., 2016, Fagnoli et al., 2018).

As far as the quality of the results is concerned, although they were obtained by means of a semi-quantitative approach (Liu and Tsai, 2012), according to the group of experts' opinions, the fuzzy logic allowed us to obtain more coherent results, reducing the biasness and imprecisions when using the traditional QFD, in line with findings provided by Abdolshah and Moradi (2013), and Cattaneo (2017) among others. This aspect appears relevant when performing risk assessment

activities, since safety experts tend to use a single crisp value during risk assessments, which may lead to inaccurate assessment results, as stressed by Liu and Tsai (2012).

From a design for safety point of view, the proposed methodology can be considered a useful tool for the enhancement of the safety level of a system considering that the analysis focuses on working activities, following a bottom-up approach for hazard identification and assessment, providing more comprehensive and thorough results than the top-down approach (ISO 14121-2:2012). Thus, it can be applied from the early stages of the design process and in particular when an upgrade is needed, which is a quite common situation in the production of durable goods (Xiong et al., 2016).

Thus, based on the above considerations, we believe that the contributions of this study in the design for safety context can be summarized as follows. The study reviews the recent studies on the use of QFD in the safety research field, providing research clues for the improvement of the existing models and thus contributing to augment the knowledge in such a specific field. In particular, capitalizing the research findings provided by Bas (2014), the proposed procedure on one hand, allows engineers to perform a more practical and thorough hazard analysis and risk assessment, taking into account work activities comprising a specific task, such as the use of a work equipment. On the other hand, the integrated use of the fuzzy logic and the Deplhi method with QFD reduces the drawbacks of subjectivity while augmenting the consistency of judgements that traditionally characterize the latter. The case study results highlight the potential benefits of the proposed approach in enhancing the safety level of a work equipment taking into account operators' practical concerns regarding its usage problems.

Beside these positive aspects, we have to underline that the present study also presents some limitations. Firstly, the proposed procedure does not provide a financial analysis. Costs related to

the implementation of the preventive and protective measure need to be addressed to extend the validity of the proposed research approach (Liu et al., 2004; Hollnagel, 2008; Bas, 2014). Secondly, the use of quantitative tools and statistical data can certainly allow engineers to obtain more accurate data. Nevertheless, we opted for a simpler procedure as to extend its usability. Moreover, the application of other QFD's augmentation tools such as the analytic hierarchy process (AHP) by (Saaty, 2004) or the use of the alpha cuts to augment the fuzzy logic sets (Cattaneo, 2017) can also improve the quality of the results. Finally, the flexibility of the proposed procedure needs to be further verified by means of its application in different contexts and industries to validate the results achieved (Le Dain et al., 2013). In fact, while the use of a single case-study as a research tool for exploratory investigation and to generate new understandings is recognized by several authors (e.g. (Yin, 2003)), the generalization of the above mentioned findings needs to be supported by the application of the proposed approach to different case studies.

## **6. Conclusions**

Following the research clues provided by recent research works on the use of QFD in the design for safety field, the article proposed a practical methodology to support engineers when performing hazard analysis and risk assessment of work activities related to the use of an equipment. Such a procedure is based on the integrated use of QFD with fuzzy logic and the Delphi method, augmenting the effectiveness of the already proposed frameworks (Bas, 2014). In fact, the proposed approach can allow engineers to perform a more practical and thorough analysis, enhancing the safety level of a work equipment taking into account operators' practical concerns regarding its usage problems. The flexibility of the proposed procedure needs to be further verified

by means of its application in different contexts to validate the results achieved. Thus, researchers and practitioners are invited to contribute to its possible development.

**Acknowledgments:** The authors wish to thank Daniele Puri, Leonardo Vita, Davide Gattamelata and Vincenzo Laurendi (INAIL), as well as Roberto Guidotti (CAI-Agromecc) and Rodolfo Catarzi (UNACMA) for their support in the case study.

## References

Abdolshah, M and Moradi, M. (2013) 'Fuzzy quality function deployment: an analytical literature review', *Journal of Industrial Engineering*, Vol. 13, <http://dx.doi.org/10.1155/2013/682532>

Akao, Y. (1990) *Quality Function Deployment: Integrating Customer Requirements into Product Design*, Cambridge, MA: Productivity Press.

Bas, E. (2014) 'An integrated quality function deployment and capital budgeting methodology for occupational safety and health as a systems thinking approach: The case of the construction industry', *Accident Analysis & Prevention*, Vol. 68, pp.42 - 56

Buckley, C.C. (1994) 'Delphi technique supplies the classic result?', *The Australian Library Journal*, Vol. 43 No. 3, pp.158 - 164

Caffaro, F and Cavallo, E. (2015) 'Comprehension of safety pictograms affixed to agricultural machinery: a survey of users', *Journal of Safety Research*, Vol. 55, pp.151 - 158



- Caffaro, F., Roccato, M., Micheletti-Cremasco, M and Cavallo, E. (2017) 'Falls from agricultural machinery: risk factors related to work experience, worked hours, and operators' behavior.' *Human factors*, <https://doi.org/10.1177/0018720817738591> (Accessed November 17 2017)
- Carnevalli, J.A and Miguel, P.A.C. (2008) 'Review, analysis and classification of the literature on QFD-Types of research, difficulties and benefits', *International Journal of Production Economics*, Vol. 114 No. 2, pp.737 - 754.
- Carnevalli, J. A., Miguel, P.A.C and Calarge, F.A. (2010). 'Axiomatic design application for minimizing the difficulties of QFD usage', *International Journal of Production Economics*, Vol. 125 No. 1, pp.1 – 12
- Cattaneo, M. E. (2017). *The Likelihood Interpretation of Fuzzy Data. In Soft Methods for Data Science*. Springer International Publishing, pp.113 - 120.
- Cavallo, E., Ferrari, E., Bollani, L and Coccia, M. (2014) 'Attitudes and behaviour of adopters of technological innovations in agricultural tractors: a case study in Italian agricultural system', *Agricultural Systems*, Vol. 130, pp.44 - 54.
- Chan, L.K and Wu, M.L. (2002) 'Quality function deployment: A literature review', *European Journal of Operational Research*, Vol. 143, pp.463 - 497
- Chen, S., Liu, J., Wang, H and Augusto, J.C. (2013) 'Ordering based decision making - a survey', *Information Fusion*, Vol. 14 No. 4, pp.521 - 531
- De Galvez, N., Marsot, J., Martin, P., Siadat, A and Etienne, A. (2016) 'Proposition of an approach applicable during the design process of working equipment to identify potential hazards for workers', *Procedia CIRP*, Vol. 50, pp.258 - 263

European Economic Community (1989). “Council Directive 89/391/EEC of 12 June 1989 on the introduction of measures to encourage improvements in the safety and health of workers at work”. <http://eur-lex.europa.eu/legal-content/EN/ALL/?uri=CELEX:31989L0391> (accessed 30/11/2017).

European Community (2006). ‘Directive 2003/37/EC of the European Parliament and of the Council of 26 May 2003 on type-approval of agricultural or forestry tractors, their trailers and interchangeable towed machinery, together with their systems, components and separate technical units and repealing Directive 74/150/EEC’. <http://eur-lex.europa.eu/legal-content/EN/TXT/?uri=celex:32003L0037> (accessed 30/11/2017).

European Community (2006). ‘Directive 2006/42/EC of the European Parliament and of the Council of 17 May 2006 on machinery, and amending Directive 95/16/EC’. <http://eur-lex.europa.eu/legal-content/EN/TXT/HTML/?uri=CELEX:32006L0042&from=EN> (accessed 30/11/2017).

European Union (2013). ‘Regulation (EU) No 167/2013 of the European Parliament and of the Council of 5 February 2013 on the approval and market surveillance of agricultural and forestry vehicles’. <http://eur-lex.europa.eu/legal-content/EN/ALL/?uri=CELEX:32013R0167> (accessed 30/11/2017).

Fargnoli, M., Laurendi V. and Tronci, M. (2010) ‘Design for Safety in Agricultural Machinery’ in *DESIGN 2010: Proceedings of the 11th International Design Conference*, pp. 701-710.

Fargnoli, M., De Minicis, M and Di Gravio, G. (2011) ‘Knowledge Management integration in Occupational Health and Safety systems in the construction industry’, *International Journal of Product Development*, Vol. 14 No. 1-4, pp.165-185

Fagnoli, M., Vita, L., Gattamelata, D., Laurendi, V. and Tronci, M. (2012) 'A reverse engineering approach to enhance machinery design for safety', Paper presented at the *12th International Design Conference*. Dubrovnik, Croatia.

Fagnoli, M., De Minicis, M and Tronci, M. (2012) 'Product's life cycle modelling for eco-designing product service systems', In *DS 70: Proc. of DESIGN 2012, the 12th International Design Conference*. Dubrovnik, Croatia.

Fagnoli, M and Sakao, T. (2017) 'Uncovering differences and similarities among Quality Function Deployment based methods in Design for X-benchmarking in different domains', *Quality Engineering*, Vol. 29 No. 4, pp.690 - 712

Fagnoli, M., Lombardi, M., Haber, N., and Puri, D. (2018) 'The Impact of Human Error in the Use of Agricultural Tractors: A Case Study Research in Vineyard Cultivation in Italy', *Agriculture*, Vol. 8 No. 6, pp. 1-21.

Franceschini, F. and Maisano, D. (2015) 'Prioritization of QFD customer requirements based on the law of comparative judgments', *Quality Engineering*, Vol. 27 No. 4, pp.437 – 449

Franceschini, F., Galetto, M., Maisano, D and Mastrogiacomo, L. (2015). 'Prioritisation of engineering characteristics in QFD in the case of customer requirements orderings', *International Journal of Production Research*, Vol. 53 No. 13, pp.3975 - 3988

Gangoellis, M., Casals, M., Forcada N. et al. (2010) 'Mitigating construction safety risks using prevention through design', *Journal of Safety Research*, Vol. 41 No. 2, pp.107 - 122

Hale, A., Kirwan, B and Kjellén, U. (2007) 'Safe by design: where are we now?', *Safety Science*, Vol. 45 No.1, pp.305 - 327

Hasan, R., Bernard, A., Ciccotelli, J and Martin, P. (2003) 'Integrating safety into the design process: elements and concepts relative to the working situation', *Safety Science*, Vol. 41 No. 2, pp.155 - 179

Hasle, P and Limborg, H.J. (2006) 'A review of the literature on preventive occupational health and safety activities in small enterprises', *Industrial health*, Vol. 44 No. 1, pp.6 - 12

Ho, W., Dey, P. K and Lockström, M. (2012) 'Strategic sourcing: a combined QFD and AHP approach in manufacturing', *Supply Chain Management: An International Journal*, Vol. 16 No. 6, pp.446 - 461

Hollnagel, E. (2008) 'Risk + Barriers = Safety?', *Safety Science*, Vol. 46, pp.221 - 229

Houssin, R., Bernard, A., Martin, P., Ris, G and Cherrier, F. (2006) 'Information system based on a working situation model for a new design approach in concurrent engineering', *Journal of Engineering Design*, Vol. 17 No. 1, pp.35 - 54

Houssin, R and Coulibaly, A. (2011) 'An approach to solve contradiction problems for the safety integration in innovative design process', *Computers in Industry*, Vol. 62 No. 4, pp.398 - 406

International Organization for Standardization ISO/TR 14121-2:2012 'Safety of machinery - Risk assessment - Part 2: Practical guidance and examples of methods', Genève.

Kahraman, C., Ertay, T and Buyukozkan, G. (2006) 'A fuzzy optimization model for QFD planning process using analytic network approach', *European Journal of Operational Research*, Vol. 171 No. 2, pp. 390-411.

Kamvysi, K., Gotzamani, K., Andronikidis, A. and Georgiou, A.C. (2014). 'Capturing and prioritizing students' requirements for course design by embedding Fuzzy-AHP and linear

programming in QFD', *European Journal of Operational Research*, Vol. 237 No.3, pp.1083 – 1094.

Kano, N., Seraku, N., Takahashi, F and Tsjui, S. (1984). 'Attractive quality and must-be quality', *Hinshitsu*, Vol. 14 No. 2, pp.147 - 156

Khanzode, V.V., Maiti, J and Ray, P.K. (2012) 'Occupational injury and accident research: A comprehensive review', *Safety Science*, Vol. 50 No. 5, pp.1355 - 1367

Kines, P., Spangenberg, S and Dyreborg, J. (2007) 'Prioritizing occupational injury prevention in the construction industry: Injury severity or absence?', *Journal of Safety Research*, Vol. 38 No. 1, pp.53 - 58.

Kines, P., Andersen, D., Andersen, L.P., Nielsen, K and Pedersen, L. (2013). 'Improving safety in small enterprises through an integrated safety management intervention', *Journal of Safety Research*, Vol. 44, pp.87 - 95

Kumar, A., Varghese, M and Mohan, D. (2000) 'Equipment-related injuries in agriculture: An international perspective', *Injury Control and Safety Promotion*, Vol. 7 No. 3, pp.175 - 186

Le Dain, M. A., Blanco, E and Summers, J.D. (2013) 'Assessing Design Research Quality: Investigating Verification and Validation Criteria' *Proceedings of the ICED13, Seoul, 19-22 August*, Vol. 2, pp.183 - 192.

Liu, J., Yang, J.B., Wang, J and Sii, H.S. (2004) 'A safety-cost based design-decision support framework using fuzzy evidential reasoning approach', In *Intelligent Sensory Evaluation*, Springer Berlin Heidelberg, pp.31-50.

Liu, H.T. and Tsai, Y.L. (2012) 'A fuzzy risk assessment approach for occupational hazards in the construction industry', *Safety Science*, Vol. 50, pp.1067-1078.

Liu, S. F., Y. Lee, and Y. Huang. (2009) 'A brief fatigue inventory of shoulder health developed by quality function deployment technique', *Journal of Shoulder and Elbow Surgery*, Vol. 18 No. 3, pp.418 – 423.

Lombardi, M. and Fagnoli, M. (2018) 'Prioritization of Hazards by means of a QFD-based procedure', *International Journal of Safety and Security Engineering*, Vol. 8 No. 2, pp. 342-353.

Lux, A., Mawo De Bikond, J., Etienne, A and Quillerou-Grivot, E. (2016) 'FMEA and consideration of real work situations for safer design of production systems', *International Journal of Occupational Safety and Ergonomics*, Vol. 22 No. 4, pp.557 - 564

Marsot, J., (2005) 'QFD: a methodological tool for integration of ergonomics at the design stage', *Applied Ergonomics*, Vol. 36, pp.185 - 192

Micheli, G.J and Cagno, E. (2010) 'Dealing with SMEs as a whole in OHS issues: warnings from empirical evidence', *Safety Science*, Vol. 48 No. 6, pp.729 - 733

Organisation for Economic Co-operation and Development (2017): *OECD Standard Codes for the Official Testing of Agricultural and Forestry Tractors – 2017*. <http://www.oecd.org/tad/code/oecd-standard-codes-official-testing-agricultural-forestry-tractors.htm> (accessed 30/11/2017).

Patriarca, R., Di Gravio, G., Mancini, M and Costantino, F. (2016) 'Change management in the ATM system: integrating information in the preliminary system safety assessment', *International Journal of Applied Decision Sciences*, Vol. 9, pp.121 – 138

Poje, A., Potočnik, I., Košir, B and Krč, J. (2016) 'Cutting patterns as a predictor of the odds of accident among professional fellers', *Safety Science*, Vol. 89, pp.158 - 166

Rausand, M and Utne, I.B. (2009) 'Product safety–Principles and practices in a life cycle perspective', *Safety Science*, Vol. 47 No. 7, pp.939 - 947

Rautiainen, R., Lehtola, M.M., Day, L.M., Schonstein, E., Suutarinen, J., Salminen, S. and Verbeek, J.H. (2008) *Interventions for Preventing Injuries in the Agricultural Industry*. The Cochrane Library.

ReVelle, J.B., Moran, J.W. and Cox, C.A. (1998) *The QFD Handbook*, John Wiley and Sons, Inc.

Saaty, T.L. (1990) *Decision making for leaders: the analytic hierarchy process for decisions in a complex world*, RWS Publications.

Saaty, T.L and Sodenkamp, M. (2008) 'Making decisions in hierarchic and network systems', *International Journal of applied Decision Sciences*, Vol. 1 No.1, pp.24 - 39

Sadeghi, L., Dantan, J.Y., Siadat, and Marsot, J. (2016) 'Design for human safety in manufacturing systems: applications of design theories, methodologies, tools and techniques', *Journal of Engineering Design*, Vol. 27 No. 12, pp.844 - 877

Sadeghi, L., Dantan, J.Y., Mathieu, L., Siadat, A and Aghelinejad, M.M. (2017) 'A design approach for safety based on Product-Service Systems and Function–Behavior–Structure', *CIRP Journal of Manufacturing Science and Technology*

Shiu, M.L., Jiang, J.C and Tu, M.H., (2013). *Quality Strategy for Research and Development*, John Wiley and Sons, Hoboken, New Jersey.

Sivasamy, K., Arumugam, C., Devadasan, S.R., Muruges, R and Thilak, V.M.M. (2016) 'Advanced models of quality function deployment: a literature review', *Quality and Quantity*, Vol. 50 No. 3, pp.1399 - 1414

- Taattola, K., Rautiainen, R.H., Karttunen, J.P., Suutarinen, J., Viluksela, M.K., Louhelainen, K and Mäittälä, J. (2012) 'Risk factors for occupational injuries among full-time farmers in Finland', *Journal of Agricultural Safety and Health*, Vol. 18 No. 2, pp.83 - 93
- Temponi, C., Yen, J and Tiao, W.A. (1999) 'House of quality: A fuzzy logic-based requirements analysis', *European Journal of Operational Research*, Vol. 117 No. 2, pp.340 – 354
- Tontini, G. (2007) 'Integrating the Kano model and QFD for designing new products', *Total Quality Management and Business Excellence*, Vol. 18 No. 6, pp.599 - 612
- Underwood, P and Waterson, P. (2013) 'Systemic accident analysis: examining the gap between research and practice', *Accident Analysis and Prevention*, Vol. 55, pp.154 - 164
- Vinayak, K and Kodali, R. (2013) 'Benchmarking the quality function deployment models', *Benchmarking: An International Journal*, Vol. 20 No. 6, pp.825 – 854
- Vinodh, S and Chintha, S.K. (2011) 'Application of fuzzy QFD for enabling leanness in a manufacturing organisation', *International Journal of Production Research*, Vol. 49 No. 6, pp. 1627–1644.
- Vinodh, S., Manjunatheshwara, K.J., Sundaram, S and Kirthivasan, V. (2017) 'Application of fuzzy quality function deployment for sustainable design of consumer electronics products: a case study', *Clean Technologies and Environmental Policy*, Vol. 19, pp.1021 - 1030.
- Wang, Y and Tseng, M.M. (2011) 'Integrating comprehensive customer requirements into product design', *CIRP Annals - Manufacturing Technology*, Vol. 60 No.1, pp.175 - 178



Xiong, Y., Zhao, P., Xiong, Z and Li, G. (2016) 'The impact of product upgrading on the decision of entrance to a secondary market', *European Journal of Operational Research*, Vol. 252 No. 2, pp.443 – 454

Yager, R.R. (1993) 'Non-numeric multi-criteria multi-person decision making', *Group Decision and Negotiation*, Vol. 2, pp.81 - 93

Yin, R. K. (2003). *Case Study Research: Design and Methods (3rd edition)*. Thousand Oaks: Sage.

Younesi, M and Roghanian, E. (2015) 'A framework for sustainable product design: a hybrid fuzzy approach based on Quality Function Deployment for Environment', *Journal of Cleaner Production*, Vol. 108, pp.385 - 394.

Zaim, S., Sevkli, M., Camgöz-Akdağ, H., Demirel, O.F., Yayla, A.Y and Delen, D. (2014) 'Use of ANP weighted crisp and fuzzy QFD for product development', *Expert Systems with Applications*, Vol. 41 No. 9, pp.4464 - 4474

Zare Mehrjerdi, Y. (2010a) 'Applications and extensions of quality function deployment', *Assembly Automation*, Vol. 30 No. 4, pp.388 - 403

Zare Mehrjerdi, Y. (2010b) 'Quality function deployment and its extensions', *International Journal of Quality and Reliability Management*, Vol. 27 No. 6, pp.616 - 640

Zhang, F., Yang, M and Liu, W. (2014) 'Using integrated quality function deployment and theory of innovation problem solving approach for ergonomic product design', *Computers and Industrial Engineering*, Vol. 76, pp.60 - 74.

Zhang, X., Tong, S., Eres, H., Wang, K and Kossmann, M. (2015) 'Towards avoiding the hidden traps in QFD during requirements establishment', *Journal of Systems Science and Systems Engineering*, Vol. 24 No. 4, pp.316 – 336

Zheng, P., Xu, X and Xie, S. (2016) 'A weighted preference graph approach to analyze incomplete customer preference information' in *QFD product planning. Industrial Engineering and Engineering Management (IEEM) IEEE International Conference*, pp.1070 - 1074.

Zhou, Z., Goh, Y.M and Li, Q. (2015), 'Overview and analysis of safety management studies in the construction industry', *Safety Science*, Vol. 72, pp.337 – 350.