



# The urban roots of populism: Mapping and explaining populist strongholds within major Italian cities (2013–2022)

European Urban and Regional Studies  
1–20

© The Author(s) 2023

Article reuse guidelines:

[sagepub.com/journals-permissions](https://sagepub.com/journals-permissions)

DOI: 10.1177/09697764231210800

[journals.sagepub.com/home/eur](https://journals.sagepub.com/home/eur)**Mirko Crulli** 

University of Pisa, Italy

**Gabriele Pinto** 

Sapienza University of Rome, Italy

## Abstract

The impact of local contexts on populist voting patterns is receiving more attention, after being initially underestimated in the research literature. Populist support tends to be concentrated in areas ‘left behind’ or ‘that don’t matter’, but we still lack an accurate understanding of (1) the locations of these places *within* major cities and (2) what characteristics of urban contexts prompt the populist vote. We aim to bridge this gap by analysing precinct-level electoral results of populist parties within six major Italian cities over the 2013–2022 decade. Through novel maps of the within-city populist vote, we identify four types of urban environments: populist strongholds, emerging populist, sporadically populist and never-populist areas. We then investigate how two types of intra-urban factors – compositional and contextual – relate to the formation of populist strongholds and support for populist parties with distinct ideological profiles. The findings improve our comprehension of the urban ‘places of populism’ and highlight the need for the ‘left behind’ thesis to focus more fully on within-city patterns and divides.

## Keywords

Contextual effects, Italian populism, political geography, populist vote, urban politics

## Introduction

Following the European ‘polycrisis’ (Zeitlin et al., 2019), the past decade has seen a surge of populism in the old continent (Hutter and Kriesi, 2019). Although it has been clear from the outset that this ‘populist wave’ tends to be geographically clustered, the pertinent research on the geography of populism (Lizotte, 2019) has mainly focused on national and sub-national determinants. Except for some insightful single case studies (e.g. Essletzbichler and

Forcher, 2022; Pratschke et al., 2021; van Gent et al., 2014), little attention has been paid to the role of *within*-municipality urban contexts in shaping populist support. Even the well-known thesis that populist parties exploit grievances of places ‘left behind’

---

### Corresponding author:

Mirko Crulli, Department of Political Science, University of Pisa,  
Via Serafini 3, 56126 Pisa, Italy.Email: [mirko.crulli@phd.unipi.it](mailto:mirko.crulli@phd.unipi.it)

(Gordon, 2018; McKay, 2019) and ‘that don’t matter’ (Huijsmans, 2023; Rodríguez-Pose, 2018) is based on regional, urban-rural and city-towns comparisons, whereas it disregards *within*-city divides and the existence of populist hotbeds within prosperous cities (Essletzbichler and Forcher, 2022).

Yet, the urban/metropolitan context is not of secondary importance. The metropolitan area has become the main form of human settlement in many countries. Urbanisation levels have been constantly rising in recent decades, and urban population represents the vast majority of the total population of more developed regions, including Europe.<sup>1</sup> The sociopolitical implications of such developments – although still understudied – have not been lost in the pertinent academic literature. Sellers et al. (2013) argued that a ‘metropolitanisation of politics’ is shaping advanced societies, highlighting the growing political significance of within-city fractures compared to traditional regional or urban-rural cleavages.<sup>2</sup> More recent studies have shed further light on substantial electoral and attitudinal divides within contemporary European cities (e.g. Crulli, 2022b, 2023; Maxwell, 2019; Valbruzzi, 2021). Therefore, fine-grained intra-urban distinctions associated with populism need to be explored more in-depth, not only because they have often been overlooked but, above all, because they are increasingly relevant.

Furthermore, based on the rapidly developing body of work on the ‘places of populism’, we are now aware of the usual socioeconomic or *compositional* features of these places: high levels of economic inequality, low levels of education, and an older population (Dijkstra et al., 2020). However, we have a much more limited understanding of the local, and specifically urban, *contextual* factors associated with support for ideologically different populist parties.

We seek to fill these gaps by examining both the intra-urban distribution of the populist vote and the relationship between urban contextual factors and populist support. Three questions guide the research:

**RQ1:** Where are the ‘places of populism’ typically located within cities?

**RQ2:** What are the compositional and contextual factors favouring the formation of populist strongholds within cities?

**RQ3:** What urban compositional and contextual factors explain support for ideologically different populist parties?

We answer these questions by analysing precinct-level electoral results of populist parties within six major Italian cities over the 2013–2022 decade. Italy is a unique breeding ground for populism. Three very different populist parties – *Lega*, *Fratelli d’Italia* (FdI), and *Movimento 5 Stelle* (M5S) – have been major actors in the country’s party system for the last ten years. Moreover, Italy appears an apt case for this study as these ideologically different populisms have achieved success in a variety of territorial contexts (Albertazzi and Zulianello, 2021; Bazzoli and Lello, 2022; Chiamonte and Emanuele, 2018; Crulli, 2022b; Levi and Patriarca, 2020; Valbruzzi, 2021).

To conduct our analysis, we resort to a new geocoded dataset of Italian electoral results at the precinct (*sezioni elettorali*) level (Pinto, 2023). This dataset allows us to examine variations in the intra-urban populist support over time and to account for differences between cities in the North and in the South, or in zones formerly characterised by diverse ‘territorial political subcultures’ (Trigilia, 1981). In addition, the dataset enables us to overcome a common challenge in research on the territorial distribution of the (populist) vote: the lack of geocoded data at proper fine-grained areal units. In fact, the absence of granular-level electoral results has often ‘forced’ researchers interested in local and intra-urban political behaviour to adopt qualitative approaches, such as individual interviews and focus groups (e.g. Bertuzzi et al., 2019; Boswell et al., 2022). Such research can be enlightening, but still, it does not completely fulfil the ‘need to take fine-grained geographical distinctions much more seriously’ (Boswell et al., 2022: 169).

The rest of the article is organised as follows. First, we provide a literature review on the concept of populism and the trajectories of Italian populist parties, expounding on what we already know about

their territorial rootedness. Second, we illustrate our research design, dwelling on the data and methods employed<sup>3</sup> and outlining the research hypotheses. The following empirical analysis is subdivided into three main sections, one for each research question. In the first and more descriptive part, we present our novel maps of the populist vote within selected cities. Here we identify four types of urban precincts – populist strongholds, emerging populist, sporadically populist and never-populist areas – and discuss where each type is located. Second, we employ a spatial regression model to gauge what compositional and contextual factors – including housing market, ethnic structure, access to public services and the Internet – are likely to turn an urban environment into a populist stronghold. Finally, we use spatial regression analysis again to investigate the influence of the same intra-urban compositional and contextual factors on voting for populist parties with distinct ideological profiles. In the conclusion, we summarise how our findings contribute to a deeper understanding of the urban ‘places of populism’ and what factors are most likely to favour the success of different populist parties within cities.

## Populism and the geography of populism(s) in Italy

### *The many populisms of Italian politics*

Since the beginning of the populist wave that has been affecting Europe for 20 years now, several publications have focused on the concept and definition of (different types of) populism (Mudde, 2004, 2007; Rodrik, 2018). A series of approaches to the study of populism – the ‘political-strategic’, the ‘sociocultural’, and the ‘ideational’ ones (Rovira Kaltwasser et al., 2017) – has thus congealed. Nonetheless, the long-running debate about the true meaning of populism seems to have come to a close. A broad consensus among experts has been reached on the strengths of the ‘ideational’ approach, according to which populism is a ‘thin-centred’ ideology based on two pillars: centrality of (the will of) the ‘people’ and anti-elitism (Mudde, 2004: 543).

The ‘thin-centredness’ of the populist ideology implies that it can be adopted by very different political

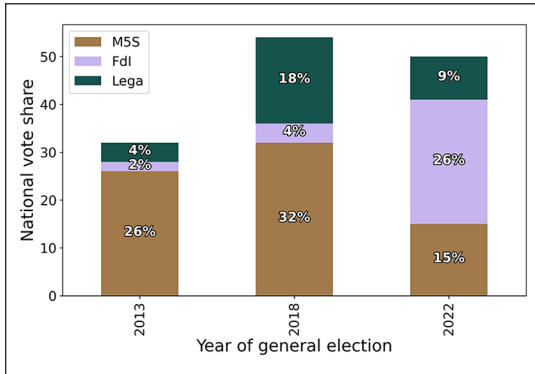
parties. No other European country exemplifies this more clearly than Italy. The country is home to two populist radical right (PRR) parties – Lega and FdI – and the ‘neither left nor right’ M5S. The fundamental ideological tenets of PRR parties are nativism<sup>4</sup> and authoritarianism,<sup>5</sup> in conjunction with populism (Mudde, 2007). Hence, Lega and FdI – partners in the current government – share an ideology characterised by an aversion towards migrants and a traditional view of society. Soft Euroscepticism and sovereignism are other pillars of their political platforms.<sup>6</sup>

M5S’s populism is different from both the right-wing (more cultural) populism that is prevalent in Europe and the left-wing (more economic) populism that is predominant in Latin America (Rodrik, 2018). Due to its chameleonic ideology, M5S has been defined as an ‘eclectic’ (Mosca and Tronconi, 2019), ‘polyvalent’ (Pirro, 2018), or ‘valence’ (Zulianello, 2020) populist party. This means that beyond endorsing the two core elements of populist ideology – ‘people-centrism’ and ‘anti-elitism’ – M5S has primarily focused on non-positional issues. Examples include the fight against corruption, aimed at increasing transparency of institutions, and proposals for democratic renewal, especially through online platforms for political participation. Moreover, the party has changed its position on several issues throughout its history and has governed with very different partners, spanning the entire left-right spectrum.

### *Electoral performances of Italian populist parties*

The Italian party system of the 2000s featured two political poles: the centre-left, since 2007 led by *Partito Democratico* (PD), and the centre-right, led by Berlusconi’s *Forza Italia* (FI). The party system underwent deep transformations in the long period of crises that followed the 2008 Great Recession. Changes were brought by new or transformed populist parties, which have enjoyed high support for the whole 2013–2022 decade, although their electoral fortunes have been swaying (Figure 1).

Born in 2009, M5S became the first party (26%) at its first parliamentary election (2013), causing a political shock by ending the bipolarism of the Second Republic. At that time, FdI had just formed,



**Figure 1.** National vote shares of Italian populist parties over the ‘populist decade’ (2013–2022), general elections.

Notes: Authors’ elaboration on Ministry of the Interior data.

while Lega was an electorally marginal party that reaped one of its worst-ever results. Lega’s growth began after the change in leadership and transformation into a nationalist PRR party by Matteo Salvini, Lega’s leader since 2013 (Albertazzi et al., 2018). Therefore, the 2018 general election witnessed a new turmoil (Chiaromonte and Emanuele, 2018): M5S was confirmed as the first party with over 30 per cent of the votes, but Lega grew the most, exceeding 18 per cent (up from the previous 4%). The cumulative result of Italian populist parties in 2018 remains the best aggregate performance of populist parties in Western Europe from 2010 to the present (Emanuele et al., 2022). An unprecedented, fully populist government was thus formed by M5S and Lega, which, however, lasted only 1 year. Finally, the two PRR parties have met opposite fates in the last 3 years. Lega has sunk while Fdi has surged in the polls, culminating in the September 2022 election, which resulted in Fdi’s resounding victory (26%) and the formation of the Meloni cabinet. Hence, Fdi’s path from the fringe of the political system to nominating the prime minister passed through catching votes from both M5S and, above all, Lega (Chiaromonte et al., 2023: 20). As a result, although M5S remained an important player in Italian politics, the 2022 electoral outcome brought Italy in line with most Western European countries, where the strongest populist party is on the radical right (Crulli and Viviani, 2022).

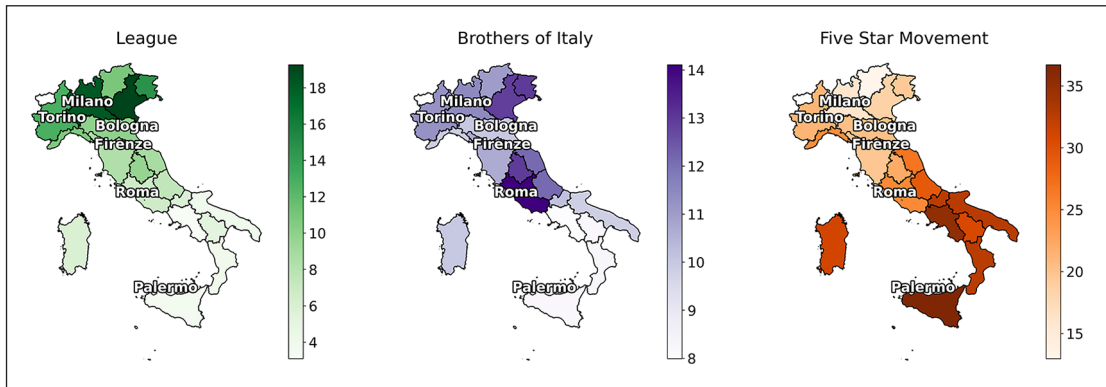
### The geography of Italian populisms

Coming to the geography of populist support in Italy (Figure 2), we know from previous contributions that there are remarkable North-South or inter-regional variations (Albertazzi and Zulianello, 2021; Chiaromonte and Emanuele, 2018), as well as divides between (types of) municipalities (Levi and Patriarca, 2020), between cities and countryside (Bazzoli and Lello, 2022), and between diverse peripheries (Fruncillo and Pratschke, 2020).

For instance, despite its attempt at ‘nationalisation’, Lega remains primarily a party of the North and less densely populated towns. In contrast, M5S reaps most electoral rewards in the South and performs well in large municipalities (Levi and Patriarca, 2020), although with some exceptions (Pratschke et al., 2021). Thanks to its 2022 exploit, Fdi has managed to become highly competitive in many previously unfavourable contexts, but even in this case, there are significant differences between cities in the Centre-North and the South (Improta et al., 2022).

As for the urban-rural cleavage, on the one hand, support for populist parties appears to be only partially related to rural contexts and place peripherality *per se* (Bazzoli and Lello, 2022; Fruncillo and Pratschke, 2020). On the other hand, Lega, in particular, has usually been similarly strong across small towns and suburbs, whereas there is an evident gap between these kinds of places and larger cities (Bazzoli and Lello, 2022: 12–13). By stealing a significant portion of Lega’s electorate, Fdi has also assumed a ‘village-oriented’ profile in 2022 (Chiaromonte et al., 2023), whereas it had previously been stronger in cities (Vampa, 2023).

All these types of territorial rifts associated with the Italian populist vote have been much more investigated than intra-urban divides. This reflects a more general trend. Although some scholars started to uncover patterns of vote ‘metropolitanisation’ a decade ago (Sellers et al., 2013), stressing the relevance of intra-metropolitan electoral heterogeneity and polarisation (Crulli, 2022b), we still know much less about *within*-city divisions than about those between regions or between urban and rural areas. So, whereas there has already been attention to *inter*-cities rifts in Italian populist support in the past



**Figure 2.** Regional vote shares of Italian populist parties: averages of the general elections held over the ‘populist decade’ (2013, 2018, 2022).

Notes: Authors’ elaboration on Ministry of the Interior data.

(Agnew et al., 2002; Shin and Agnew, 2011), only very recently have scholars addressed *intra*-cities divides connected with new political cleavages and the populist vote (Crulli, 2022b; Pratschke et al., 2021; Valbruzzi, 2021). Beyond being still scant and sporadic, most of these studies, as we emphasise in the next section, use territorial areas of analysis that are too large and internally heterogeneous. Hence, there is a need for more in-depth analyses of populist support across fine-grained urban units.

## Research design

### Identifying populist parties

Many studies have classified populist parties in Europe relying on the ideational approach (Meijers and Zaslove, 2021; Rooduijn et al., 2023; Zulianello, 2020). In this article, we use the POPPA Expert Survey developed by Meijers and Zaslove (2021) to justify our selection of Lega, FdI, and M5S as populist parties. The POPPA Expert Survey views populism as a continuous property. It assigns a score ranging from 0 to 10 to each party, with a higher score indicating a greater degree of populism. This is particularly helpful when evaluating contentious cases. M5S and Lega are widely considered populist, but there is less consensus on whether FI and FdI are populist. We define populist parties as those with a POPPA score above 7 and consider M5S, Lega and FdI as populist because they exceed this threshold.<sup>7</sup>

### The dataset: novelty and advantages

To examine the populist vote and its determinants within major Italian cities, we take advantage of a recently constructed dataset of Italian electoral results geocoded at the precinct level: the SEI (*Sezioni Elettorali Italiane*) dataset (Pinto, 2023). The SEI dataset also contains precinct-level sociodemographic and contextual variables calculated with spatial interpolation from ISTAT census data. To gain a more complete understanding of the factors driving within-city populist voting behaviour, we combine these data with other compositional and contextual factors collected from various sources (see Table 1 and Supplemental Appendix I).

To the best of our knowledge, the SEI dataset is the first and only source of geocoded electoral results at such a granular level of aggregation for Italy’s largest cities. Thus far, works providing and analysing sub-municipal electoral results – such as those by the *MappaRoma* project (Lelo et al., 2019) and the *Istituto Cattaneo* (Valbruzzi, 2021) – employed territorial units much broader than the precincts.<sup>8</sup> Precincts are the most granular level for which electoral results can be available, with a size ranging between 500 and 1200 voters in Italy. The availability of precinct-level electoral results, with related compositional and contextual variables, helps to overcome shortcomings of previous studies (e.g. by reducing the risk of incurring ecological fallacy) and enables much more detailed spatial analysis (Pinto, 2023).<sup>9</sup>

**Table 1.** List of compositional and contextual variables.

Compositional variables			Sources
	Under 35	Percentage of population under 35 years	SEI dataset, 2011 census
	Over 75	Percentage of population over 75 years	
	Males	Percentage of male population	
	Graduates	Percentage of population with a degree	
	Unemployed	Percentage of unemployed population over the total workforce	
	Income	Average declared income (€)	MEF, 2011
Contextual variables			Sources
<i>Housing</i>	House prices	Average selling price (€/sq. metre) of residential buildings	OMI, 2014
	Homeowners	Rate of households owning homes on total resident households	SEI dataset, 2011 census
	New buildings	Rate of residential buildings built after 1990 on total residential buildings	
<i>Ethnic structure</i>	Foreigners	Percentage of foreign residents	SEI dataset, 2011 census
	African foreigners	Percentage of African foreign residents	
	Foreigners' change	Percentage difference between foreign residents in 2011 and 1991	
<i>Public services</i>	Schools' density	Density of primary and secondary public schools within a 500-m radius from the precinct's centroid	MIUR, 2022
	Bus stops' density	Density of bus stops (weighted for the number of lines) within a 500-m radius from the precinct's centroid	Local GTFS data by public transit agencies of Italian municipalities, 2022
	Internet access	Maximum Average Download speed (Mbit/s)	AGCOM BroadbandMap, 2019

SEI: Sezioni Elettorali Italiane; MEF: Italian Ministry of Economy and Finance; OMI: Housing Market Observatory of the Italian Revenue Agency; MIUR: Italian Ministry of Education; GTFS: General Transit Feed Specification; AGCOM: Communications Regulatory Authority. Notes: The table reports all the independent variables we used in the regression analysis. All variables are numeric and continuous. We standardised all variables (mean=0; standard deviation=1).

A final advantage of the SEI dataset is that it comprises data for metropolises scattered throughout the country. This allows us to delve into similarities and differences of cities in diverse geo-political areas, which were (Trigilia, 1981) and still are (e.g. Chiaramonte et al., 2023; Improta et al., 2022) characterised by distinct voting patterns. Hence, our sample includes two cities in the North (Milan and Turin), two in the South (Rome and Palermo), and two in the Centre-North (Bologna and Florence),<sup>10</sup> which also corresponds to the former 'Red Zone', the area where the communist subculture was once dominant.

### Approach and methods

In the first part of the empirical analysis, we exploit the fact that the SEI dataset is *geocoded* to construct and discuss new maps of the populist vote within the cities. We classify precincts into four categories.

- *Populist strongholds*: precincts where a populist party has always been the leading party since 2013.
- *Emerging populist*: precincts that became populist in 2018 and remained so in 2022.

- *Sporadically populist*: precincts where a populist party has won the elections at least once during the 2013–2022 decade but not in both 2018 and 2022.<sup>11</sup>
- *Never-populist*: precincts where the leading party has never been a populist one.

In the second part, we move on to consider what compositional and contextual factors predict whether a precinct is a populist stronghold, through a descriptive analysis. We estimate a *probabilistic regression model* with city fixed effects, where the dichotomous outcome variable takes a value of 1 if the precinct is a populist stronghold and 0 otherwise.

In the third part, we turn our attention to electoral support for different populist parties in the 2013, 2018 and 2022 general elections. We estimate separate *linear regression models* – with city and year fixed effects – for each populist party, to examine whether compositional and contextual factors are associated with support for populism in different ways, depending on the specific populist party. Therefore, the dependent variables in this section are continuous, measuring precinct-level vote shares for populist parties.

As a final step, we also briefly investigate *heterogeneity* in terms of city and election. To do this, we run additional separate regression models for each party, city and election.<sup>12</sup>

In all empirical sections, we take into account the spatial dimension of our data by employing *spatial regression techniques*. We incorporate lags of the independent variables and model autocorrelation in the error term using a row-standardised spatial weight matrix of the 8 nearest neighbours.<sup>13</sup>

Before presenting our sets of explanatory factors, we need to acknowledge a limitation of the data at our disposal and, consequently, our approach. Our independent variables were measured at different points in time (Table 1), and we do not have suitable panel data. This means that we are unable to account for changes in the explanatory factors over the decade. Therefore, while conducting our regression analyses, we assume that the relative spatial distribution of the independent variables has not changed significantly.<sup>14</sup>

## Variables and hypotheses

Building on the theoretical framework advanced by Thrift (1983), geographers and social scientists studying territory-based voting trends and attitudes often distinguish between two types of effects: *compositional* and *contextual* (Harteveld et al., 2021; Johnston et al., 2018; Maxwell, 2019). Compositional effects pertain to the characteristics of the people living in a particular place and suggest that their choices and attitudes are primarily (or entirely) determined by their socioeconomic conditions. Contextual effects, on the other hand, suggest that the experience of living in a certain place can influence people's orientations and political choices. While many current studies have focused on the role of compositional factors (Johnston et al., 2018: 3), such as age, education level, and income (Dijkstra et al., 2020: 7), in shaping contemporary political behaviour and the rise of populist and radical right movements, there is also evidence that local contextual factors matter (Harteveld et al., 2021; McKay, 2019; Patana, 2020), meaning that the populist vote cannot be explained by voter composition alone (van Gent et al., 2014). Therefore, we analyse how both compositional and contextual determinants relate to within-city populist support.

As for *compositional* effects, our regression models comprise variables measuring age cohorts, gender compositions, education levels, employment statuses and income levels in the precincts (Table 1). From several cross-national studies analysing populism at either the national or the individual level (e.g. Inglehart and Norris, 2016), we know that populist support is usually stronger among older generations, men, the less educated and the more economically insecure strata of the population. Therefore, we posit that the same empirical relation exists at the level of precincts within cities.

**H1:** Urban precincts composed of a higher proportion of elderly individuals, men, non-graduates, unemployed and less wealthy people are more likely to be populist strongholds, or support populist parties.

The first group of *contextual* predictors of the populist vote that we include in our regression models concerns *housing* (Adler and Ansell, 2020; Ansell et al., 2022; Bertuzzi et al., 2019; Patana, 2022; Waldron, 2021). Adler and Ansell (2020) have been the first to investigate the relationship between housing market trends and populist voting patterns. They discovered that contexts that have seen an increase in property values, such as the centres of major and booming cities, are less likely to support populism, compared to areas affected by house price deflation. This suggests that ‘housing discontent’, or ‘the political expression of latent anxiety regarding housing and place-based precarity’ (Waldron, 2021: 1221), may fuel the populist vote. More recent research has also suggested that, although the effect of housing market dynamics is more evident among homeowners compared to renters, there appears to be a ‘geotropic’ effect that causes both categories to be influenced by (changes in) house prices in a similar way (Ansell et al., 2022; Crulli, 2023).<sup>15</sup> However, these attempts are still relatively rare, and further analyses of the connections between housing systems, place inequalities and populism are needed. Our models comprise three variables related to the housing market: one measures the average house prices, one the rate of homeowners, and another one the rate of new buildings. We also look at the interaction between the ‘house prices’ and ‘homeowners’ variables.<sup>16</sup> We conceive of electoral precincts with higher house prices, and higher proportions of homeowners and old (i.e. more historical) buildings as advantaged. Building on previous contributions, we hypothesise the following:

**H2:** Urban precincts enjoying advantageous housing conditions are less likely to be populist strongholds, or support populist parties.

The second group of contextual predictors regards the *ethnic structure* of precincts. Studies on the relationship between immigration and political behaviour have produced mixed results. Some research has found that a higher number of foreign residents in an area can lead to anti-immigrant attitudes (Schneider, 2008) and support for far or (populist)

radical right parties that campaign against non-natives (Halla et al., 2017). Other studies, however, have suggested the opposite relationship (Alba and Foner, 2017; Pagliacci and Bonacini, 2022; Patana, 2020) or found that the size of the immigrant population has no clear or significant effect (Lucassen and Lubbers, 2012; Rydgren, 2008). In addition, the relationship between foreigners and support for nativist parties can be significantly heterogeneous across space, even in areas that are geographically close to each other (Shin and Agnew, 2011: 69). Therefore, formulating expectations about the ethnic structure of precincts is not straightforward. If the so-called ‘contact hypothesis’ (Alba and Foner, 2017; Allport, 1954; Pagliacci and Bonacini, 2022; Schneider, 2008) holds, living in diverse, multi-ethnic environments with more opportunities for interaction between natives and non-natives can lead to mutual understanding and tolerance – therefore to less support for PRR parties. However, the opposite scenario is also plausible. According to ‘ethnic competition’ (Pagliacci and Bonacini, 2022: 366–367) or ‘ethnic threat’ theories (Harteveld et al., 2021: 5), PRR parties may be stronger in urban places where the greater number of immigrants is seen as a threat by local people. Furthermore, it may be relevant to distinguish between ethnic groups. In fact, Africans are the primary target of Italian PRR parties’ rhetoric, which singles them out as scapegoats for cultural, economic and social issues. Against this backdrop, we formulate two competing hypotheses:

**H3a:** Urban precincts with a higher proportion of foreign residents – especially Africans – are less likely to be populist strongholds and support PRR parties (‘contact hypothesis’).

**H3b:** Urban precincts with a higher proportion of foreign residents – especially Africans – are more likely to be populist strongholds and support PRR parties (‘ethnic threat hypothesis’).

As illustrated in the second section of the article, M5S is ideologically distinct from the two PRR parties, insofar as it is *not* a nativist party and has not strongly politicised the immigration issue as Lega



and FDI have. Consequently, we also hypothesise the following:

**H4:** The ethnic structure of urban precincts has different relationships with the populist vote, depending on the type of populist party.

The third set of contextual factors captures *access to public services*, measured by two proxies: schools' and bus stops' density. It has already been stated that social isolation and lack of public services in local contexts can underlie strong political malaise and a populist orientation (Bertuzzi et al., 2019; Boswell et al., 2022). However, only very recently have scholars started disentangling the links between access to local public services and transport and the populist (radical right) vote, finding that PRR parties perform better in contexts where the lack of these services causes 'residential constraints' (Patana, 2022). After all, transposing to the intra-urban level the thesis that the populist flare-up represents 'the revenge of the places that don't matter' (Rodríguez-Pose, 2018), or lagging places that feel abandoned by policymakers, we may expect the following:

**H5:** Urban precincts that are more isolated in terms of access to schools and public transportation are more likely to be populist strongholds, or support populist parties.

A final contextual predictor included in our regressions<sup>17</sup> is *Internet access*, measured in terms of available Internet speed. Previous research has demonstrated that the expansion of broadband Internet helps explain the success of populist parties in Europe, arguably because the new tools provided by broadband Internet suit populists' communication needs, styles, and strategies (Schaub and Morisi, 2020). Hence, we posit that

**H6:** Urban precincts with better Internet access are more likely to be populist strongholds, or support populist parties.

Online tools have been – and still are – much more relevant for M5S compared to the other Italian

populist parties. The Internet has represented the main organisational resource of M5S right from its inception, and Internet users have always been the 'natural constituency' of the party (Crulli, 2022a: 7). So much so that M5S has been depicted as an example of a 'digital party' (Gerbaudo, 2019). Therefore, we also expect the following:

**H7:** Internet access in urban precincts is more strongly and positively correlated with voting for M5S, compared to other populist parties.

We test these hypotheses in the second and third parts of the next section. First, however, we inspect where within-city populist strongholds lie.

## Results

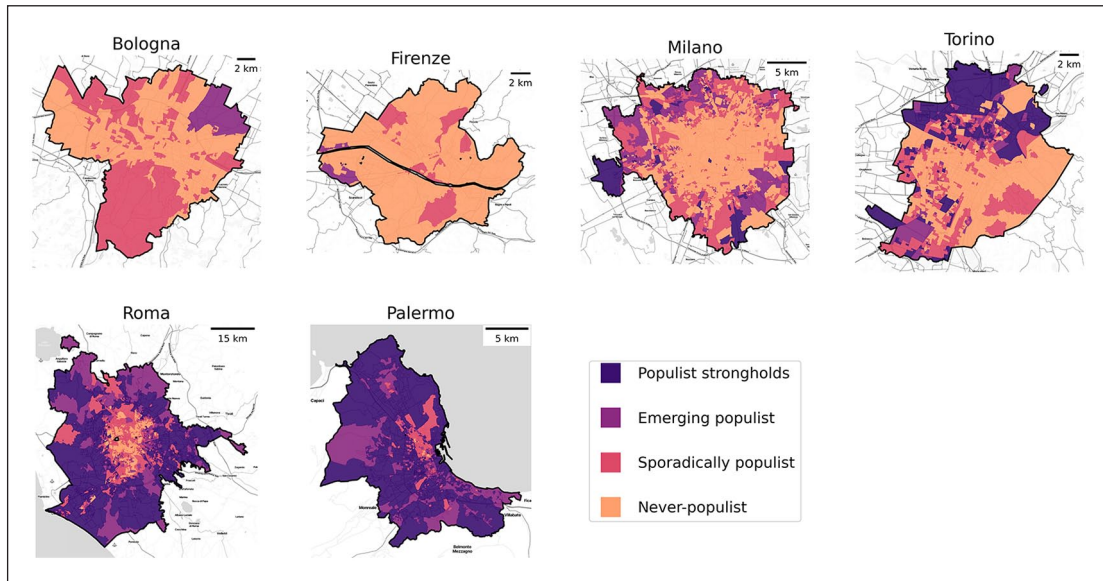
### *Mapping the populist vote within major Italian cities*

A first look at our maps of the urban populist vote points to both similarities and remarkable differences across major Italian cities (Figure 3).

As for similar patterns, *never-populist* precincts are primarily located in inner areas of the cities, which correspond to historical centres. The only exception in this regard is the most southern city of our sample, Palermo, where the never-populist type hardly occurs.

In some metropolises, such as Rome and Turin, the division between never-populist precincts within the conventional city centre and adjacent populist precincts is crystal clear. In the other Northern metropolis, Milan, the never-populist area extends far beyond the historical centre.

The two cities in the Centre-North of Italy appear as a world apart, due to their non-populist electoral behaviour. There are *no populist strongholds* in both Bologna and Florence. Interestingly, these two cities used to belong to the same 'territorial political sub-culture' (Trigilia, 1981) known as the 'Red Zone'. This was the historically left-wing part of the country, where the Italian Communist Party had been dominant throughout the whole First Republic, and its heir, the centre-left PD,<sup>18</sup> has been the leading actor until recent years. Even though PD suffered



**Figure 3.** Mapping the populist vote within six of the major Italian cities: Milan, Turin, Bologna, Florence, Rome and Palermo.

*Notes:* The figure shows the location of the different types of precincts in each city. Populist strongholds: precincts where the leading party has always been a populist one since 2013. Emerging populist: precincts that became populist in 2018 and remained so in 2022. Sporadically populist: precincts where a populist party has won the elections at least once during the 2013–2022 decade but not in both 2018 and 2022. Never-populist: precincts where the leading party has never been a populist one. Map tiles by Stamen Design, CC BY 3.0 – Map data (C) OpenStreetMap contributors.

severe losses in the (former) Red Zone during the last elections (Chiaramonte et al., 2023; Improta et al., 2022), previously, Red cities still stand out from the others for their different voting behaviour. We could thus dare to claim that a territorial political subculture is still in place in such cities: in the past, it was a left-wing subculture; in the present, it is a non-populist one.

On the other hand, an overall populist voting behaviour characterises more southern cities: Rome, and especially Palermo. Populist strongholds represent more than 65 per cent of the total precincts of Sicily's main city (Figure 4). As for Italy's capital, populist precincts are mostly located outside of Rome's centre – and outside of the *Grande Raccordo Anulare*, the highway surrounding the inner urban area of the city. Nonetheless, more than 80 per cent of Rome's precincts are classified as more-or-less populist. The proportion of precincts that are, to a varying degree, populist drops to less than 55 per cent in Turin (which is thus halfway between being

populist and non-populist) and to just above 30 per cent in Milan (which is therefore mostly non-populist).

The picture resulting from this overview is one of fragmentation. If we had looked at the proportions of different precinct types in all cities under examination (upper-left side of Figure 4) instead of conducting a city-by-city exploration, we would have concluded that major Italian cities are quite equally divided between more-or-less populist (60.1%) and never-populist (39.9%) precincts. However, by dwelling on a visual inspection of each case, we discovered a far more nuanced reality. The conventional wisdom that populists are weaker in the central – and usually better off – urban areas holds overall. However, there are both almost entirely populist cities and entirely non-populist ones. Furthermore, some populist strongholds can be found within the central area of otherwise non-populist metropolises (e.g. Milan), and strewn non-populist districts exist within otherwise very populist cities (e.g. Palermo).



**Figure 4.** Proportions of different types of precincts within six of the major Italian cities: Milan, Turin, Bologna, Florence, Rome and Palermo.

Notes: The figure shows the proportions of different types of precincts in each city. Populist strongholds: precincts where the leading party has always been a populist one since 2013. Emerging populist: precincts that became populist in 2018 and remained so in 2022. Sporadically populist: precincts where a populist party has won the elections at least once during the 2013–2022 decade but not in both 2018 and 2022. Never-populist: precincts where the leading party has never been a populist one.

### *Compositional and contextual determinants of populist strongholds*

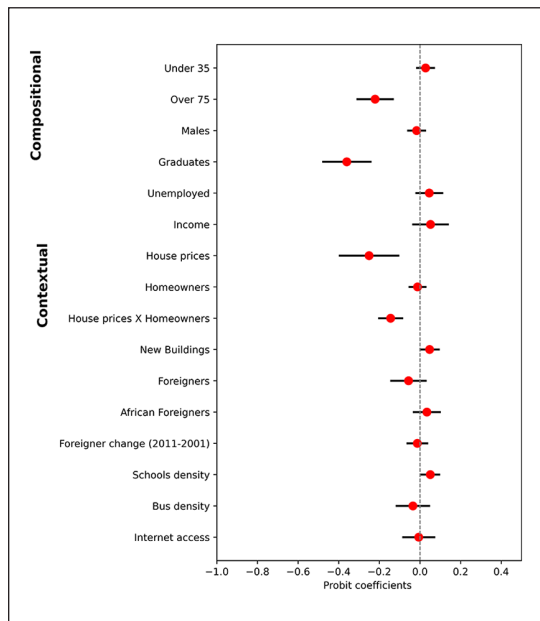
Having illustrated where the populist and non-populist precincts of major Italian cities are, we can move on to the more explanatory parts of our investigation. We start by looking at the results of our spatial probit model predicting the likelihood that a precinct is a populist stronghold (Figure 5).<sup>19</sup>

Our first hypothesis (H1) on compositional effects is met partially. Occupational status and education level show the expected relationship: urban precincts hosting higher proportions of unemployed individuals and non-graduates are more likely to be populist strongholds. Income and gender do not have statistically significant correlations, while the direction of the relationship between age and populist strongholds is opposite of what was hypothesised: urban precincts composed of more elderly people are less likely to be populist strongholds. The next

empirical section will help us disentangle whether such a relationship holds true for all populist parties under consideration.

Our second hypothesis (H2) regarding housing conditions finds strong confirmation. Our model predicts that urban precincts with higher house prices and proportions of historical buildings – which can be seen as advantaged in terms of the housing market – have less probability of being populist strongholds. The coefficient of homeownership, which is almost negligible, becomes negative when interacting with house prices. This suggests that precincts where there are more owners of higher-priced houses are clearly less likely to be populist strongholds. Remarkably, the predictor measuring house prices has the strongest coefficient among all the contextual variables considered.

Comments on the ethnic structure of precincts (H3) are more nuanced. Based on our model, urban precincts with a higher proportion of foreign



**Figure 5.** Coefficient plot of the spatial probit model predicting the likelihood that a precinct is a populist stronghold.

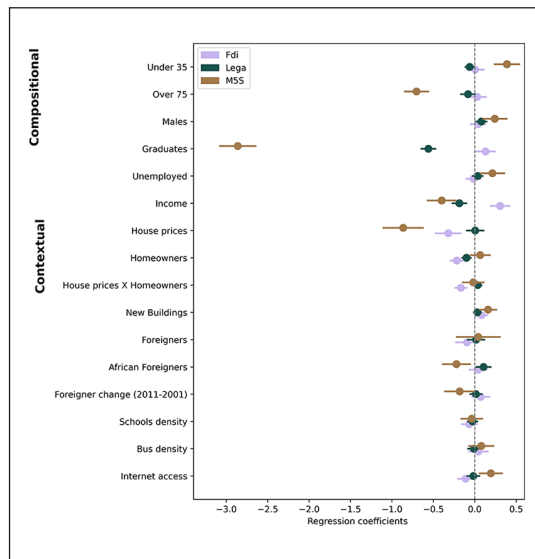
Notes: Spatial lag probit error model coefficients of compositional and contextual variables predicting the likelihood that a precinct is a populist stronghold. 5–95 confidence intervals are displayed. The regression includes a constant, spatial lag of each independent variable, a fixed effect for each city, and a control for distance from the city centre. Standard errors were computed using a row-standardised spatial weight matrix of 8-nearest neighbours. The full regression output – including lagged effects – is reported in Supplemental Appendix III.

residents are less likely to be populist strongholds, but the relationship is not significant.

Hypotheses 5 and 6 concerning public services and Internet access are not supported at this stage, as neither of them relates to populist strongholds in a statistically significant manner.

### *Intra-urban compositional and contextual factors on vote for ideologically distinct populist parties*

We now proceed to address our final research question: What urban compositional and contextual factors explain support for ideologically different populist parties? (Figure 6).



**Figure 6.** Coefficient plots of separate spatial regression models explaining the success of Italian populist parties at the precinct level.

Notes: Regression coefficients of compositional and contextual variables predicting the precinct vote shares of populist parties. 5–95 confidence intervals are displayed. These Spatial Durbin Error models include a constant, spatial lag of each independent variable (except for graduates, income, house prices and foreigners), a fixed effect for each city \* election and a control for distance from the city centre. All independent variables are centred with mean = 0 and standard deviation = 1. The average values of the dependent variables are 6.4 (Lega), 21.7 (M5S), and 10.5 (Fdi). The full regression output – including lagged effects – is reported in Supplemental Appendix III.

First, noteworthy differences emerged in terms of compositional variables. A typical ‘M5S’s urban precinct’ has a higher proportion of males, younger, unemployed, poorer and less educated people. The ‘graduates’ variable has the strongest coefficient: a one standard deviation increase in the proportion of graduates in the precinct predicts a 2.7 percentage points decrease in M5S’s vote share – against the average share of the party of 21.7 per cent. These outcomes largely align with the previously outlined H1, except for the result of age cohorts.<sup>20</sup> A similar remark applies to Lega: support for this party is higher in precincts with less educated and economically disadvantaged people. The profile of ‘Fdi’s urban precincts’, instead, does not match the ideal type of populist place. In fact, our model predicts

higher endorsement for Meloni's party in urban precincts with more educated and affluent individuals. This unexpected outcome merits further investigation. Hence, we will verify in the next subsection whether these positive correlations of graduates and higher incomes with vote for FdI held across cities and elections.

Several contextual factors play a critical role. Urban precincts characterised by higher house prices are clearly less populist, although this relationship is almost negligible for Lega. Vote for the two PRR parties is also weaker in precincts with a higher percentage of homeowners. A higher percentage of new buildings predicts higher electoral strength of all Italian populist parties, although the relationship is non-significant in Lega's model. In short, the idea that populists perform better in urban settings that are more disadvantaged in terms of housing (H2) or where there are more sources of 'housing discontent' (Waldron, 2021) is confirmed.

The ethnic structure of precincts differentiates urban places supporting PRR parties from those voting for M5S in an evident manner (thereby confirming H4). Neither a higher rate nor an increase of foreign residents in the precinct produce significant indications. However, the situation changes as soon as attention shifts to the rate of African foreign residents, whose coefficient is significant and positive for Lega, while negative for M5S. Although the result is non-significant for FdI, this finding supports 'ethnic threat' theories (H3b), revealing that voting for the Italian party historically opposed to migrants is stronger in urban contexts with higher proportions of Africans.

As regards the remaining contextual factors, interesting findings can be gleaned from the 'Internet access' predictor. Internet access is clearly positively correlated with support for M5S, confirming H7 (whereas H5 and H6 are overall rejected). The same variable has a significantly negative coefficient in FdI's model and a non-significant one in Lega's model.

### *Heterogeneity across cities and elections*

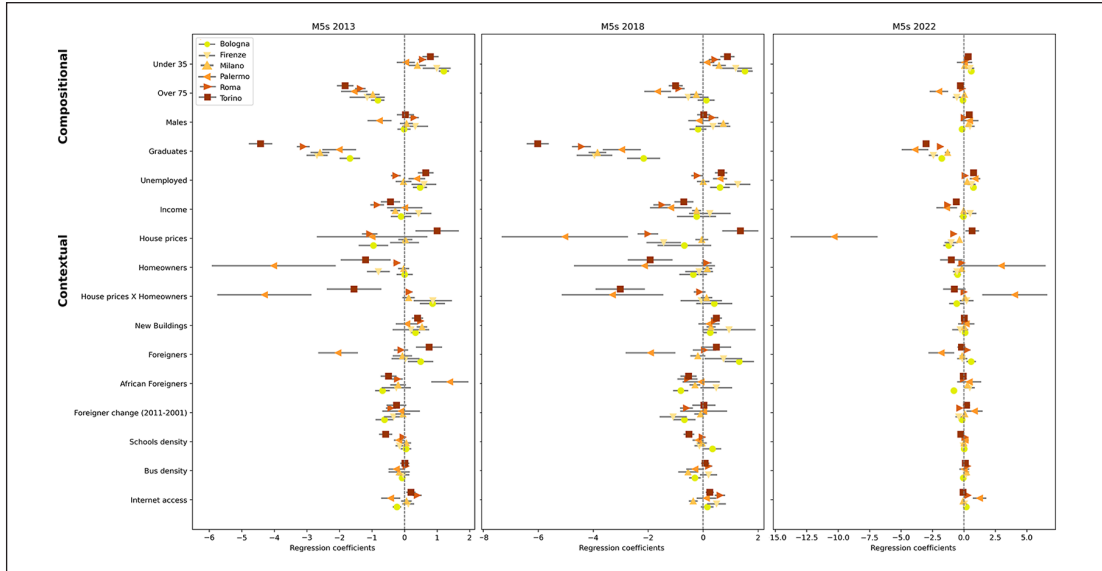
Figure 6 provided a summary picture, pooling data from all cities and elections. However, the size and even direction of relationships may change across

cities and over time. For instance, variables that seem to have no influence on a populist party's vote share across the three elections considered may still be significant in one specific election. Therefore, before outlining our conclusions, we briefly introduce additional separate regression models for each party, city and election, to uncover cross-city and temporal variations in how selected predictors correlate with support for distinct populist parties.

Commenting on every single coefficient reported in Figures 7–9 extends beyond the scope of this article. Hence, we limit ourselves to providing follow-ups to two previously emerged issues.

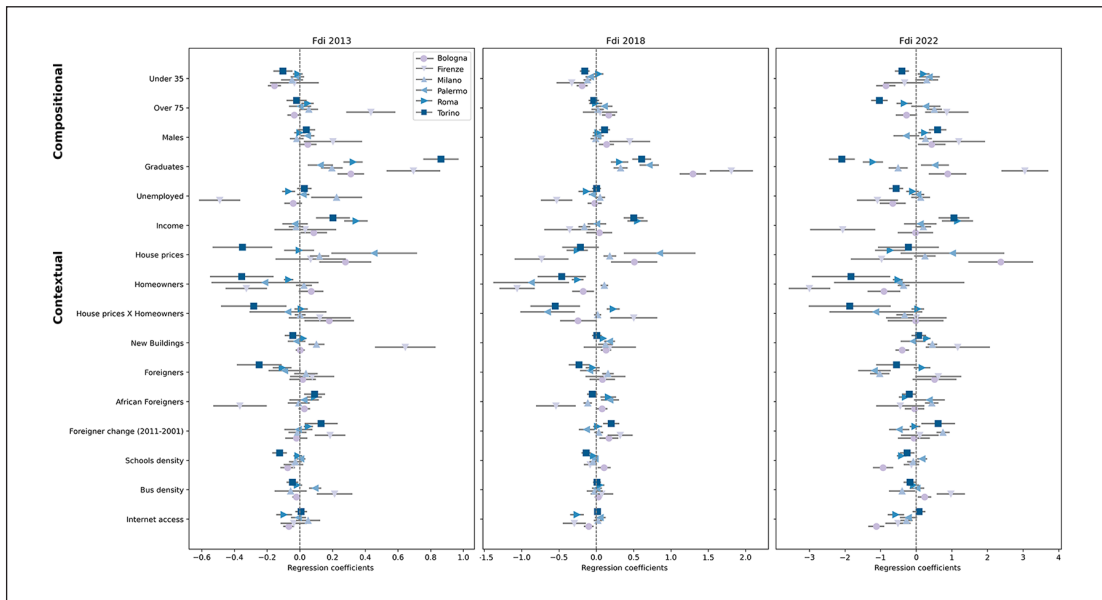
First, one unexpected outcome just commented upon is that higher proportions of graduates and wealthier people correlate with support for FdI. However, these positive correlations might be valid only for some cities or elections, for example, those elections in which the party was still marginal (2013 and 2018). By looking at Figure 8, we can appreciate the following: whereas in 2013 and 2018 correlations between graduates and vote for FdI were positive across all cities, in 2022, they were positive in only half of the cities. Similar observations apply to the relationship between income and vote for Meloni's party, which, however, has always been diversified across cities.<sup>21</sup> Interestingly, the relationship between the proportion of graduates and voting for Lega has also changed in a similar vein: it was positive in most cities back in 2013, whereas it turned out to be negative in five out of six cities in 2022. All in all, these findings suggest that, as FdI and Lega have embraced a PRR platform, their urban social bases have changed too.

Second, we found a positive relationship between the size of African foreigners and support for Lega. Still, we are aware that previous studies, such as the research by Pagliacci and Bonacini (2022) on support for Lega in the 2019 European election, yielded different results. Therefore, we do not convey the message that the relationship between foreigners and support for this PRR party has been positive always and everywhere. On the contrary, Figures 8 and 9 suggest that there is substantial heterogeneity in the relationship between the rate of (African) foreigners and voting for PRR parties across cities and elections.



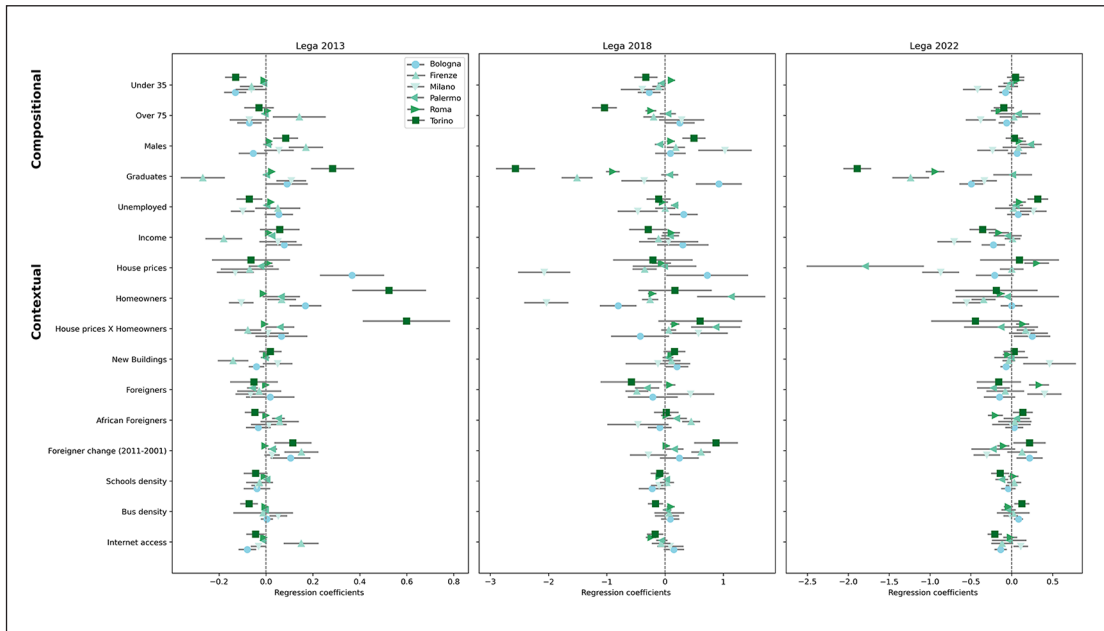
**Figure 7.** Coefficient plots of separate spatial regression models explaining vote for M5S at the precinct level, across cities and general elections.

Notes: Regression coefficients of compositional and contextual variables predicting the precinct vote share of M5S. 5–95 confidence intervals are displayed. These Spatial Durbin Error models include a constant, spatial lag of each independent variable (except for graduates, income, house prices and foreigners), and a control for distance from the city centre.



**Figure 8.** Coefficient plots of separate spatial regression models explaining vote for FdI at the precinct level, across cities and general elections.

Notes: Regression coefficients of compositional and contextual variables predicting the precinct vote share of FdI. 5–95 confidence intervals are displayed. These Spatial Durbin Error models include a constant, spatial lag of each independent variable (except for graduates, income, house prices and foreigners), and a control for distance from the city centre.



**Figure 9.** Coefficient plots of separate spatial regression models explaining vote for Lega at the precinct level, across cities and general elections.

Notes: Regression coefficients of compositional and contextual variables predicting the precinct vote share of Lega. 5–95 confidence intervals are displayed. These Spatial Durbin Error models include a constant, spatial lag of each independent variable (except for graduates, income, house prices and foreigners), and a control for distance from the city centre.

## Conclusion

In the limited but growing strand of research on the geography of populism, the most popular thesis is that of the places ‘left behind’ or ‘that don’t matter’ (Rodríguez-Pose, 2018). According to such interpretation, the success of populist parties represents the electoral revenge of declining towns and regions, which feel neglected by policymakers amid socio-economic transformations induced by globalisation and post-industrialisation. The opposite of such lagging-behind ‘places of populism’ would be large, dynamic and booming cities, allegedly representing bulwarks against populist hordes. Hence, the territorial ‘populist vs non-populist’ divide would resemble that between thriving city regions and struggling towns, peripheral regions and rural areas.

While these arguments are valid, the puzzle of the geography of populism is more complex. In fact, the now-classic thesis of the ‘places that don’t matter’ glosses over relevant *within-city* variations

in populist support. By paying deeper attention to the urban distribution and roots of the populist vote, we discovered that even the centres of dynamic and cosmopolitan cities host populist hotbeds. Roughly 30 and 55 per cent of the precincts of two clearly ‘not left behind’ Italian metropolises – Milan and Turin, respectively – can be considered populist to some extent. Not to mention the case of the country’s capital and largest city, Rome, where never-populist precincts are just a fifth of the total.

Therefore, our analysis of the within-city populist vote stresses the urgency to focus on fine-grained territorial divisions, which are not captured by most geographical accounts of the populist vote. To explore in depth such within-city, fine-grained geographical distinctions associated with the Italian populist vote, we took three main empirical steps. First, we created novel maps of the urban populist vote by introducing a new classification of voting precincts founded on the electoral outcomes of the last ten years. We thus differentiated between

populist strongholds, emerging populist, sporadically populist and never-populist urban contexts. The same criteria can be adopted to investigate within-city populist vote in other European countries (provided that data are available). Our examination of Italian cities showed that while the common belief that populists are stronger in peripheral areas is generally true, there are both fully populist and non-populist cities. There are more variations than similarities among cities, and there are populist enclaves within areas of otherwise non-populist cities, as well as non-populist pockets in otherwise highly populist cities. In addition, the interplay between inter-regional (i.e. North-South) and intra-cities electoral patterns seems decisive for variations in populist support, as showcased by cities of the former 'Red Zone' (Bologna and Florence).

Second, we explored the compositional and contextual determinants of populist strongholds, through a spatial probit model. The most solid and interesting finding of this section is that urban precincts that are worse off in terms of housing conditions are, *ceteris paribus*, much more likely to become populist strongholds.

Finally, we ran a battery of Spatial Durbin Error models to analyse the correlations of urban compositional and contextual effects with votes for the three ideologically different Italian populist parties. It came out that the strength or even direction of some predictors differ considerably depending on the populist party under examination. Most often, the distinction is between populist parties on the radical right – Lega and FdI – and the more chameleonic M5S. For instance, Lega appears to perform better in urban precincts with a higher rate of African foreign residents – which supports 'ethnic threat' theories – whereas the opposite applies to M5S. Nonetheless, when looking at other predictors the distinction between PRR parties and M5S is not explanatory.

By unravelling the substantial within-city-level variation in Italian populist support, our research suggests that the 'places of populism' are not limited to areas that are usually considered to be 'left behind'. This has broader implications for both the literature on populism geography and urban studies. First, the consolidated thesis of the places 'that don't matter' needs revisiting, not because it is not valid, but rather

because it must take the complexity of within-city patterns into account. Populist parties can take root even in some neighbourhoods of the most flourishing metropolises. Second, our results also reinforce the belief that looking at the mere division between cities and towns or non-urban regions is simplistic and inadequate. Thus, metropolitan areas should not be considered as single territorial units in analysing geographical divides associated with the populist wave. Hence, the scope for scholars dealing with urban processes and spaces to contribute to our understanding of the territorial nuances of populism. Finally, beyond paving the way for further research on populism in urban environments, our findings may help policy-makers to better grasp the dynamics of populism in different urban contexts. They suggest that policy-makers should pay attention to local variations within cities when (and if) they endeavour to design targeted policies that address the underlying causes of political malaise, such as underprivileged housing conditions.

### Declaration of conflicting interests

The author(s) declared no potential conflicts of interest with respect to the research, authorship and/or publication of this article.

### Funding

The author(s) received no financial support for the research, authorship and/or publication of this article.

### ORCID iDs

Mirko Crulli  <https://orcid.org/0000-0002-9656-7567>

Gabriele Pinto  <https://orcid.org/0000-0002-1984-9616>

### Supplemental material

Supplemental material for this article is available online.

### Notes

1. According to the 2018 Revision of World Urbanization Prospects by the United Nations Population Division, the urban population accounts for 74.5 per cent of the total population in Europe and 71 per cent in Italy.
2. These authors go as far as to claim that, in countries where most of the voters reside in metropolitan areas, party competition coincides more and more with competition between metropolitan places (Sellers



- et al., 2013).
3. Data, replication material, and interactive maps associated with this article can be accessed at the following link: <https://populiststrongholds.github.io/populist-strongholds/>Please cite this article if you make use of our data or maps.
  4. Defined as ‘the idea that states should be inhabited exclusively by members of the native group (“the nation”) and that nonnative elements (persons and ideas) are fundamentally threatening to the homogeneous nation-state’ (Mudde, 2007: 19).
  5. Defined as ‘the belief in a strictly ordered society, in which infringements of authority are to be punished severely’ (Mudde, 2007: 23).
  6. Lega and FdI have gained prominence after adopting a PRR ideology but have very different legacies. Lega was born as a regionalist populist party and was then transformed into a more canonical PRR party by Matteo Salvini (Albertazzi et al., 2018). FdI is instead a successor of *Alleanza Nazionale*, which itself was the heir of *Movimento Sociale Italiano*, a neo-fascist party of post-war Italy. Despite this continuity with the Italian fascist past, FdI has increasingly attempted to distance itself from fascism (Vampa, 2023). These different legacies imply that, while FdI has always been unabashedly nationalist, only after the PRR turn has Lega become equally nationalist.
  7. M5S=9.46, Lega=8.6, FdI=7.44. We exclude FI due to its POPPA score being below the threshold and close to the middle of the scale (5.56). Of course, the threshold of 7 is, in a way, arbitrary. However, to put this threshold into context, the average POPPA score of all parties included in the expert survey is 4.39, whereas the average of Italian parties is 5.55. Hence, the three selected parties have much higher scores compared to both the European and the Italian averages. Furthermore, dichotomous classifications of populist parties, such as the PopuList (Rooduijn et al., 2023), also consider the three selected parties as populist – and Lega and FdI as PRR.
  8. The *MappaRoma* project focuses almost exclusively on Rome, whereas the recent volume edited by Valbruzzi (2021) explores socioeconomic hardship and voting choices in 14 metropolises during the 2008–2018 decade. A few other works, however, relied on unique datasets comprising precinct-level electoral results to analyse electoral turnout and voting behaviour in *single case studies* (Belletтини et al., 2016; Fruncillo and Pratschke, 2020; Pratschke et al., 2021).
  9. To give just one example, in the case of Rome, both the *MappaRoma* project (Lelo et al., 2019), the *Istituto Cattaneo* (Valbruzzi, 2021) and other research (Crulli, 2022b) relied on data at the 155 *zone urbanistiche* level. By resorting to the SEI dataset, we can increase the level of granularity by almost 17 times, since the precincts of Rome are 2600.
  10. These six are also the largest cities – in terms of population size – for which precinct-level electoral data are available in the SEI dataset.
  11. This is the most variegated category, including precincts where the leading party was a populist one only in 2013 (2%), only in 2018 (47%), only in 2022 (36%), in 2013 and 2018 (13%), in 2013 and 2022 (2%).
  12. In our main analysis, we use city\*year fixed effects. This means that models have a different intercept for each city and election, but slopes do not vary. Conversely, by running separate cross-sectional models – one for each city and election – we estimate a different slope for each city and election.
  13. Specifically, we estimate Spatial Durbin Error models:  $y = X\beta + WX\theta + u, u = \lambda Wu + \varepsilon$ .  $y$  is the dependent variable, that is, either a dummy variable indicating whether the precinct is a populist stronghold (Figure 5) or the precinct-level vote share for the populist party (Figures 6–9);  $X$  is the matrix of compositional and contextual factors;  $\beta$  is the coefficient;  $\theta$  is the lagged coefficient;  $W$  is the spatial weight matrix;  $\lambda$  is the autoregressive component of the error. This specific model was selected following the approach suggested by Anselin (2017). Diagnostics for spatial dependence justifying the adoption of this model are reported in Supplemental Appendix III (Tables 4a–7a). As a robustness check, we compared the outputs obtained using different specifications: a simple OLS, a spatial model with lags only, and the Spatial Durbin Error model with lags of the independent variables *and* in the error term (Table 8a, Supplemental Appendix IV). We implemented our estimations via the Python PYSAL – SPREG module (Rey and Anselin, 2007) and the R spatial probit module (Wilhelm and de Matos, 2013).
  14. For example, we measured schools’ density using 2022 data. Although some schools may have closed and others may have opened in the last decade, we assume that the change in their relative distribution is negligible. In other words, we assume that potential changes in our independent variables pertain to a small fraction of precincts and do not significantly impact the relationship between these variables and our dependent variables.
  15. As Ansell and colleagues explain, low and declining house prices may signal, to both homeowners and non-homeowners, that the market does not value the

place where they live, and by extension, ‘people like them’.

16. Unfortunately, we do not have suitable panel data on house prices and homeowners at our disposal. Hence, we cannot examine the effect of changes in these variables.
17. All models also include a control variable measuring distance from the city centre, so as to make sure that our predictors do not simply capture how peripheral a precinct is.
18. With a score of 2.11, PD is the ‘least populist’ of Italian parties, according to the POPPA Expert Survey.
19. Supplemental Appendix II provides descriptive statistics for all independent variables by precinct type and the correlation matrix. As can be seen from the correlation matrix (Table 2a), some of our independent variables are quite correlated with each other. This raised concerns about multicollinearity, which we assessed using Variance Inflation Factors and Condition Indices (Table 3a). Based on this assessment, we dropped the lagged variables related to graduates, income, house prices and foreigners, which were found to cause multicollinearity issues (though not perfect multicollinearity). Supplemental Appendix III reports the complete outputs of our regression analysis. We ran five separate nested models. Model 1 comprises demographic variables only; we added socioeconomic variables in Model 2, and contextual predictors relating to the housing market and to the ethnic structure in Models 3 and 4, respectively. Model 5 is the full model, corresponding to Figure 5.
20. This suggests that the observed negative relationship between elderly people and populist strongholds may be primarily driven by M5S.
21. For instance, income has always been positively correlated with support for FdI within Rome. In fact, the party has historically maintained a strong constituency in the affluent neighbourhoods of Northern Rome (see, for example, Tomassi, 2018).

## References

- Adler D and Ansell B (2020) Housing and populism. *West European Politics* 43(2): 344–365.
- Agnew J, Shin M and Bettoni G (2002) City versus metropolis: the Northern League in the Milan Metropolitan Area. *International Journal of Urban and Regional Research* 26(2): 266–283.
- Alba R and Foner N (2017) Immigration and the geography of polarization. *City and Community* 16(3): 239–243.
- Albertazzi D and Zulianello M (2021) Populist electoral competition in Italy: the impact of sub-national contextual factors. *Contemporary Italian Politics* 13(1): 4–30.
- Albertazzi D, Giovannini A and Seddone A (2018) ‘No regionalism please, we are Leghisti!’ The transformation of the Italian Lega Nord under the leadership of Matteo Salvini. *Regional and Federal Studies* 28(5): 645–671.
- Allport G (1954) *The Nature of Prejudice*. Boston, MA: Addison-Wesley.
- Anselin L (2017) *Spatial Regression 10. Specification Tests*. Chicago, IL: Center for Spatial Data Science.
- Ansell B, Hjorth F, Nyrup J and Larson MV (2022) Sheltering populists? House prices and the support for populist parties. *Journal of Politics* 84(3): 1420–1436.
- Bazzoli N and Lello E (2022) The neo-populist surge in Italy between territorial and traditional cleavages. *Rural Sociology* 87(S1): 662–691.
- Belletini G, Ceroni CB and Monfardini C (2016) Neighborhood heterogeneity and electoral turnout. *Electoral Studies* 42(6): 146–156.
- Bertuzzi N, Caciagli C and Caruso L (eds) (2019) *Popolo Chi? Classi Popolari, Periferie e Politica in Italia*. Roma: Ediesse.
- Boswell J, Denham J, Furlong J, Killick A, Ndugga P, Rek B, et al. (2022) Place-based politics and nested deprivation in the U.K.: beyond cities-towns, ‘two Englands’ and the ‘left behind’. *Representation* 58(2): 169–190.
- Chiaromonte A and Emanuele V (2018) L’onda sismica non si arresta. Il mutamento del sistema partitico italiano dopo le elezioni 2018. In: Emanuele V and Paparo A (eds) *Gli Sfidanti Al Governo. Disincanto, Nuovi Conflitti e Diverse Strategie Dietro Il Voto Del 4 Marzo 2018*. Roma: LUISS University Press, pp. 143–152.
- Chiaromonte A, Emanuele V, Maggini N and Paparo A (2023) Radical-right surge in a deinstitutionalised party system: the 2022 Italian general election. *South European Society and Politics* 27(3): 329–357.
- Crulli M (2022a) The three faces of a populist party: insights into the organizational evolution of the Five-star Movement. *Contemporary Italian Politics*. Epub ahead of print 12 July. DOI: 10.1080/23248823.2022.2099239.
- Crulli M (2022b) Vote metropolitanization after the transnational cleavage and the suburbanization of radical right populism: the cases of London and Rome. *Italian Journal of Electoral Studies* 85(1): 3–23.
- Crulli M (2023) Contextual factors, transnationalism attitudes, and support for GAL-TAN parties within

- European metropolises: insights from London. *British Journal of Politics and International Relation*. Epub ahead of print August 1. DOI: 10.1177/13691481231189383.
- Crulli M and Viviani L (2022) Turning to the right? The impact of the ‘long crisis decade’ (2008-2019) on right-wing populist vote and attitudes in Europe. *Partecipazione e Conflitto* 15(2): 482–499.
- Dijkstra L, Poelman H and Rodríguez-Pose A (2020) The geography of EU discontent. *Regional Studies* 54(6): 737–753.
- Emanuele V, Mannoni E and Improta M (2022) *La performance elettorale dei populistici potrebbe essere il terzo risultato migliore in Europa dal 2010*. Florence: Italian Center for Electoral Studies.
- Essletzbichler J and Forcher J (2022) ‘Red Vienna’ and the rise of the populist right. *European Urban and Regional Studies* 29(1): 126–141.
- Fruncillo D and Pratschke J (2020) Periferie ed esiti elettorali. Un’analisi territoriale su piccole unità applicata ai risultati delle elezioni 2018 in un’area del Mezzogiorno. *Polis* 35(3): 451–481.
- Gerbaudo P (2019) *The Digital Party: Political Organisation and Online Democracy*. London: Pluto Press.
- Gordon IR (2018) In what sense left behind by globalisation? Looking for a less reductionist geography of the populist surge in Europe. *Cambridge Journal of Regions, Economy and Society* 11(1): 95–113.
- Halla M, Wagner AF and Zweimüller J (2017) Immigration and voting for the far right. *Journal of the European Economic Association* 15(6): 1341–1385.
- Harteveld E, Van Der Brug W, De Lange S and Van Der Meer T (2022) Multiple roots of the populist radical right: support for the Dutch PVV in cities and the countryside. *European Journal of Political Research* 61(2): 440–461.
- Huijsmans T (2023) Place resentment in ‘the places that don’t matter’: explaining the geographic divide in populist and anti-immigration attitudes. *Acta Politica* 58(2): 285–305.
- Hutter S and Kriesi H (eds) (2019) *European Party Politics in Times of Crisis*. Cambridge: Cambridge University Press.
- Improta M, Mannoni E, Marcellino C and Trastulli F. (2022) Voters, issues, and party loyalty: the 2022 Italian election under the magnifying glass. *Italian Journal of Electoral Studies* 85(2): 3–27.
- Inglehart RF and Norris P (2016) *Trump, Brexit, and the rise of populism: economic have-nots and cultural backlash*. HKS faculty research working paper series no. 52, August. Cambridge, MA: Harvard Kennedy School.
- Johnston R, Manley D, Pattie C and Jones K (2018) Geographies of Brexit and its aftermath: voting in England at the 2016 referendum and the 2017 general election. *Space and Polity* 22(2): 162–187.
- Lelo K, Monni S and Tomassi F (2019) *Le Mapped Della Disuguaglianza. Una Geografia Sociale Metropolitana*. Roma: Donzelli.
- Levi E and Patriarca F (2020) An exploratory study of populism: the municipality-level predictors of electoral outcomes in Italy. *Economia Politica* 37(3): 833–875.
- Lizotte CA (2019) Where are the people? Refocusing political geography on populism. *Political Geography* 71(4): 139–141.
- Lucassen G and Lubbers M (2012) Who fears what? Explaining far-right-wing preference in Europe by distinguishing perceived cultural and economic ethnic threats. *Comparative Political Studies* 45(5): 547–574.
- McKay L (2019) ‘Left behind’ people, or places? The role of local economies in perceived community representation. *Electoral Studies* 60(1): 102046.
- Maxwell R (2019) Cosmopolitan immigration attitudes in large European cities: contextual or compositional effects? *American Political Science Review* 113(2): 456–474.
- Meijers MJ and Zaslove A (2021) Measuring populism in political parties: appraisal of a new approach. *Comparative Political Studies* 54(2): 372–407.
- Mosca L and Tronconi F (2019) Beyond left and right: the eclectic populism of the Five Star Movement. *West European Politics* 42(6): 1258–1283.
- Mudde C (2004) The populist zeitgeist. *Government and Opposition* 39(4): 542–563.
- Mudde C (2007) *Populist Radical Right Parties in Europe*. Cambridge: Cambridge University Press.
- Pagliacci F and Bonacini L (2022) Explaining the anti-immigrant sentiment through a spatial analysis: a study of the 2019 European elections in Italy. *Tijdschrift voor Economische en Sociale Geografie* 113(4): 365–381.
- Patana P (2020) Changes in local context and electoral support for the populist radical right: evidence from Finland. *Party Politics* 26(6): 718–729.
- Patana P (2022) Residential constraints and the political geography of the populist radical right: evidence from France. *Perspectives on Politics* 20(3): 842–859.
- Pinto G (2023) Sezioni Elettorali Italiane (SEI): a new database of Italian electoral results geocoded at

- precinct level. *Political Research Exchange* 5(1): 2185158.
- Pirro ALP (2018) The polyvalent populism of the 5 Star Movement. *Journal of Contemporary European Studies* 26(4): 443–458.
- Pratschke J, Vitale T, Morelli N, Cousin B, Piolatto M and Del Fabbro M. (2021) Electoral support for the 5 Star Movement in Milan: an ecological analysis of social and spatial factors. *Journal of Urban Affairs* 45(5): 998–1021.
- Rey SJ and Anselin L (2007) PySAL: a Python library of spatial analytical methods. *Review of Regional Studies* 37(1): 5–27.
- Rodríguez-Pose A (2018) The revenge of the places that don't matter (and what to do about it). *Cambridge Journal of Regions, Economy and Society* 11(1): 189–209.
- Rodrik D (2018) Populism and the economics of globalization. *Journal of International Business Policy* 1(1–2): 12–33.
- Rooduijn M, Pirro ALP, Halikiopoulou D, Froio C, van Kessel S, de Lange SL, et al. (2023) *The PopuList 3.0: An Overview of Populist, Far-Left and Far-Right Parties in Europe*. The PopuList. DOI: 10.17605/OSF.IO/2EWKQ.
- Rovira Kaltwasser C, Taggart PA, Espejo PO and Ostiguy P (eds) (2017) *The Oxford Handbook of Populism*. Oxford: Oxford University Press.
- Rydgren J (2008) Immigration sceptics, xenophobes or racists? Radical right-wing voting in six West European countries. *European Journal of Political Research* 47(6): 737–765.
- Schaub M and Morisi D (2020) Voter mobilisation in the echo chamber: broadband internet and the rise of populism in Europe. *European Journal of Political Research* 59(4): 752–773.
- Schneider SL (2008) Anti-immigrant attitudes in Europe: outgroup size and perceived ethnic threat. *European Sociological Review* 24(1): 53–67.
- Sellers JM, Kübler D, Walter-Rogg M and Walks RA (2013) *The Political Ecology of the Metropolis: Metropolitan Sources of Electoral Behaviour in Eleven Countries*. Colchester: ECPR Press.
- Shin M and Agnew J (2011) Spatial regression for electoral studies: the case of the Italian Lega Nord. In: Warf B and Leib J (eds) *Revitalizing Electoral Geography*. Farnham: Ashgate Publishing, pp. 59–74.
- Thrift NJ (1983) On the determination of social action in space and time. *Environment & Planning D: Society & Space* 1(1): 23–57.
- Tomassi F (2018) Il voto nei quartieri di Roma dal 2000 al 2018. *Italian Journal of Electoral Studies* 80(2): 83–110.
- Trigilia C (1981) Le subculture politiche territoriali. *Quaderni della Fondazione Feltrinelli* 16: 3–171.
- Valbruzzi M (ed.) (2021) *Come Votano Le Periferie. Comportamento Elettorale e Disagio Sociale Nelle Città Italiane*. New York: Il Mulino.
- Vampa D (2023) *Brothers of Italy: A New Populist Wave in an Unstable Party System*. Cham: Palgrave Macmillan.
- van Gent WPC, Jansen EF and Smits JHF (2014) Right-wing radical populism in city and suburbs: an electoral geography of the Partij Voor de Vrijheid in the Netherlands. *Urban Studies* 51(9): 1775–1794.
- Waldron R (2021) Housing, place and populism: towards a research agenda. *Environment and Planning A: Economy and Space* 53(5): 1219–1229.
- Wilhelm S and de Matos MG (2013) Estimating spatial probit models in R. *The R Journal* 5(1): 130–143.
- Zeitlin J, Nicoli F and Laffan B (2019) Introduction: the European Union beyond the polycrisis? Integration and politicization in an age of shifting cleavages. *Journal of European Public Policy* 26(7): 963–976.
- Zulianello M (2020) Varieties of populist parties and party systems in Europe: from state-of-the-art to the application of a novel classification scheme to 66 parties in 33 countries. *Government and Opposition* 55(2): 327–347.