

Circadian Rhythm and Melatonin in Liver Carcinogenesis: Updates on Current Findings

Yuyan Han,^a Lixian Chen,^b Leonardo Baiocchi,^c Ludovica Ceci,^b Shannon Glaser,^d Heather Francis,^{b,e} Gianfranco Alpini,^{b,e,*} & Lindsey Kennedy^{b,e,*}

^aSchool of Biological Sciences, University of Northern Colorado, Greeley, CO; ^bHepatology and Gastroenterology, Medicine, Indiana University School of Medicine, Indianapolis, IN; ^cHepatology Unit, University of Tor Vergata, Rome, Italy; ^dTexas A&M University College of Medicine, Bryan, TX; ^eRichard L. Roudebush VA Medical Center, Indianapolis, IN

*Address all correspondence to: Lindsey Kennedy, PhD, Assistant Research Professor, VA Health Science Specialist, Indiana University School of Medicine, Gastroenterology and Hepatology, Richard L. Roudebush VA Medical Center, Department of Research, 702 Rotary Circle, Rm. 007, Indianapolis, IN 46202; Tel.: +3172784226, E-mail: linkenn@iu.edu; or Gianfranco Alpini, PhD, Professor of Medicine, VA Senior Research Scientist, Hickam Endowed Chaired, Director, Indiana Center for Liver Research, Indiana University School of Medicine, Gastroenterology and Hepatology, Richard L. Roudebush VA Medical Center, Department of Research, 702 Rotary Circle, Rm. 013C, Indianapolis, IN 46202; Tel.: +3172784221, E-mail: galpini@iu.edu

ABSTRACT: Liver cancer, including hepatocellular carcinoma and cholangiocarcinoma, can be devastating if not treated early. The risk factors of liver cancer include alcoholic liver disease, non-alcoholic fatty liver disease, disruption of melatonin levels, and dysregulated circadian rhythm. The circadian rhythm is a 24-hour biological clock that regulates the physiological activities at both central and peripheral levels. Its molecular mechanism exists in every cell in mammals. Disruption of the circadian rhythm has found in liver cancers as an independent risk factor. This review summarized the most recent findings about the molecular mechanisms of circadian rhythm, the crosstalk between core clock genes and melatonin, as well as the role of circadian rhythm and melatonin played in chronic liver diseases and liver cancer. Finally, we discussed the potential clinical application of circadian rhythm and melatonin for the treatment of liver cancer and discussed future perspectives of how understanding the circadian rhythm in liver cancer progression could provide new clinical applications for liver cancer treatment and diagnosis.

KEY WORDS: cholangiocarcinoma, hepatocellular carcinoma, clock genes, melatonin, circadian rhythm

ABBREVIATIONS: AANAT, aralkylamine N-acetyltransferase; ASMT, acetylserotonin O-methyltransferase; **BMAL1**, brain and muscle ARNT-like 1; **CCA**, cholangiocarcinoma; **CCG**, clock-controlled gene; **CLOCK**, circadian locomotor output cycles kaput; **CRY**, cryptochrome; **HBV**, hepatitis B virus; **HCC**, hepatocellular carcinoma; **HCV**, hepatitis C virus; **NAFLD**, non-alcoholic fatty liver disease; **NASH**, non-alcoholic steatohepatitis; **PER**, period; **SCN**, suprachiasmatic nucleus

I. INTRODUCTION

A. Hepatocellular Carcinoma (HCC), Cholangiocarcinoma (CCA), and Chronic Liver Diseases

Worldwide, liver cancer is the sixth most prevalent cancer diagnosis and the fourth leading cause of cancer-related death.¹ Hepatocellular carcinoma (HCC) is the dominant primary liver cancer, which is classified as the sixth most common neoplasm and the third cause of cancer-related death.² HCC incidence in the United States has more than doubled over the past two decades and is anticipated to continue increasing over the next 20 years due to the growing

number of patients with hepatitis C virus (HCV) and/or non-alcoholic fatty liver disease (NAFLD).³ The worldwide incidence is heterogeneous because of the variable prevalence of risk factors and risk varies according to cause, geographic area, sex, age, and degree of liver damage. Patients with cirrhosis of any cause have a risk for developing HCC,⁴ and the major risk factors for HCC development are HBV/HCV infection, heavy alcohol consumption, aflatoxin B1 ingestion, tobacco smoking, and NAFLD caused by obesity and insulin resistance.⁵ Aging is also a strong risk factor; incidence rates of HCC and age are directly correlated until approximately 75 years of age.⁶ The prognosis for HCC is driven by the tumor stage; unfortunately, most

patients are diagnosed at an advanced stage when surgery is not an option.⁷

Cholangiocarcinoma (CCA), also known as bile duct cancer, is an epithelial cell malignancy that has an increasing mortality rate due to increased disease incidence.⁸ CCA is the second most common primary liver cancer accounting for up to 20% and representing 3% of all gastrointestinal neoplasia. CCA can be classified into three types based on anatomic location: intrahepatic CCA (arising from bile ductules); perihilar CCA (also called hilar, emerges in the right and/or left hepatic duct and/or at their junction); and distal CCA (involves the common bile duct).⁹ The risk factors shared by CCA subtypes are associated with chronic inflammation of the biliary epithelium and bile stasis.¹⁰ HCV infection, obesity, NAFLD, and smoking tend to be more common risk factors in intrahepatic CCA.¹¹ Up to 10% of people chronically infected with *O. viverrini* and *C. sinensis* liver flukes (a common risk factor in East Asia) will develop CCA.¹² It has been reported that primary sclerosing cholangitis (PSC) is strongly associated with perihilar CCA in Europe.¹³ Similar to HCC, CCA is characterized by late diagnosis and poor outcomes, being asymptomatic at early stages. Surgery with complete resection represents the only potentially curative management for CCA¹⁴ with only a small percentage of CCA are resectable. Overall, the 5-year survival rate remains low after resection for CCA in clinical settings, reported in the range of 40–60% for intrahepatic CCA, 30–50% for perihilar CCA and 27–37% for distal CCA.¹⁵ Therefore, it is essential to seek potential diagnostic biomarker, therapeutic targets, and understand the molecular mechanisms underlying the progression of CCA.

HCC and CCA can develop from a multistep process involving accumulation of molecular alterations, mediating both genetic and epigenetic events, which promote the formation of dysplastic nodules, which are bona fide preneoplastic lesions. The interaction between molecular and environmental events promotes the dysplastic cells to acquire more proliferative, invasive, and survival characteristics, which allows the complete transition to full-blown liver cancer.¹⁶ Enhanced immune response, angiogenesis, and invasion/metastasis contribute to liver cancer progression, and interestingly these cellular

processes can be modulated by melatonin signaling and melatonin-mediated changes in circadian rhythm.¹⁷ In mouse models, circadian disruption augments liver cancer development and supports mechanisms regulating liver carcinogenesis.¹⁸

As mentioned above, the risk of developing HCC or CCA can be increased due to other liver conditions, including viral hepatitis, NAFLD, alcoholic liver disease (ALD), and PSC (specifically a risk factor for CCA).^{19,20} Highlighting this, it has been reported that 60–80% of patients with chronic liver diseases report poor quality of sleep and insomnia.²¹ Indeed, sleep disturbances are strongly noted in chronic liver diseases, including HCV, primary biliary cholangitis (PBC), Wilson disease and patients with cirrhosis.²² In a small cohort, it was found that (i) chronic liver disease patients with fatigue have increased melatonin levels; (ii) fatigued patients have an altered adrenal circadian rhythm; and (iii) liver enzymes show a circadian rhythm.²³ More importantly, dysregulation of the circadian rhythm is noted in NAFLD, which is a disorder that is associated with cirrhosis and liver cancer development.²² These associations have been demonstrated in mouse models where chronic jet lag altered the circadian oscillation of clock genes, which in turn disrupted lipid metabolism gene expression.²⁴ Obviously, there is an association between sleep and circadian rhythm in the severity and progression of liver disorders. One study found that non-apnea sleep disorders significantly increase the risk of developing liver cancer.²⁵ Similarly, disturbances in circadian rhythm may be associated with poor sleep quality in HCC patients.²⁶ In this review, we will describe HCC and CCA and their association with dysregulated circadian oscillations and disturbances in melatonin signaling, and briefly discuss these mechanisms in chronic liver diseases since they are precursors for liver cancer development.

B. Circadian Rhythm and Melatonin Signaling

Circadian rhythm refers to a 24-hour cycle that regulates behavioral, metabolic and physiological processes. It exists in almost every single cell in mammalian animals.²⁷ The mammalian circadian

system is organized in a strictly regulated hierarchical network, in which the central clock is controlled by the suprachiasmatic nucleus (SCN) in the brain and peripheral clocks. The central clock controls the systemic circadian parameters, such as temperature, melatonin release, and other systemic circadian physiological activities. Furthermore, peripheral clocks exist in the liver, heart, gastrointestinal tract, and other peripheral organs, which is under the coordination of central clock.^{28,29} The entrainment of light stimulates the SCN to synchronize the metabolic activities at the organismal level, while the entrainment of food stimulates the gastrointestinal tract and liver to synchronize the clock genes at local level, which can overcome the coordination from SCN. Therefore, the coordination of external stimulus could produce a coherent rhythm across different organs, while the conflict signal from light and food may cause metabolic disorders in mammalian which are associated with disrupted circadian rhythms.³⁰

As shown in Fig. 1, the molecular clock consists of genes called clock genes that form two different types of feedbacks that drive 24-hour oscillation of the biological activities in cells at the molecular level, which was shared by both the central clock (SCN) and peripheral clock (peripheral organs). During the daytime (with the stimulation of light) in SCN, the primary positive feedback starts with the transcription factor *Brain and Muscle ARNT-Like 1* (BMAL1) and *Circadian Locomotor Output Cycles Kaput* (CLOCK), which consists of basic helix-loop-helix (bHLH) elements. BMAL1 and CLOCK form a heterodimer (BMAL1:CLOCK) that translocates to the nucleus and binds to the E-box elements of the promoter region in the primary core clock genes *Period* (PER) 1/2/3 and *Cryptochrome* (CRY) 1/2, which initiates the expression of PER family and CRY family. The PER family and CRY family reaches peak level in the middle of the night. Following this transcription, the proteins PER1/2/3, Cry1/2 and casein kinase I (CKI) form complex that in turn inhibit the expression of BMAL1:CLOCK, forming a negative feedback loop.³¹ Notice that, the food can also act as the external stimulus and initiate the positive feedback loop. Although circadian rhythm can be synchronized by environmental stimulus (e.g., light or food signals), it can sustain *ex*

in vivo or without stimulus due to the existence of the autonomous molecular circadian clock.³²⁻³⁴ These processes are called transcriptional-translational feedback and are the key basis of the oscillation of clock genes and other genes under transcriptional regulation of the core clock genes.³⁵

Researchers found BMAL1:CLOCK could also activate the orphan receptors retinoic acid receptor-related orphan receptors (ROR) family (α , β and γ) and REV-ERB family (α and β) in a cis-regulatory manner similar to the PER and CRY family. Furthermore, the ROR family activates the transcription of BMAL1³⁶ and REV-ERB family inhibits the transcription of BAML1.^{37,38} In fact, both RORs and REV-ERBs can competitively bind to the elements of a target gene and promote or suppress the translation of the target gene, respectively. The RORs show differential expression in different organ systems. For example, ROR α is highly expressed in the liver, skeletal muscle, lungs, kidney, and brain, ROR β is primarily found in the brain in human, and ROR γ is highly expressed in the immune system. Likewise, the REV-ERB β is highly expressed in the pineal gland, pituitary gland, thyroid, and prefrontal cortex. It is noticeable that REV-ERBs can act as a transcriptional repressor and regulate downstream target genes in a circadian fashion. Knocking out REV-ERB β in mice caused a 30 minutes shorter period of circadian oscillations which was also more sensitive to light-induced phase shifts.^{38,39}

In addition, BMAL1:CLOCK drives the rhythmic transcription of clock-controlled genes (CCGs), which in turn regulates thousands of downstream genes associated with cell cycle, apoptosis, tumor suppression, or oncogenesis. Indeed, others have revealed that about 10% of the transcripts in the liver were rhythmically expressed as demonstrated via next-generation sequencing and microarray analysis.^{40,41}

The circadian rhythm is found interplaying with melatonin (N-acetyl-5-methoxytryptamine), a hormone initially found in the pineal gland, shows peak level in the dark phase and 24-hour oscillation in the blood. The synthesis of melatonin is from serotonin, controlled by two enzymes aralkylamine N-acetyltransferase (AANAT) and acetylserotonin O-methyltransferase (ASMT). Melatonin *per se* showed

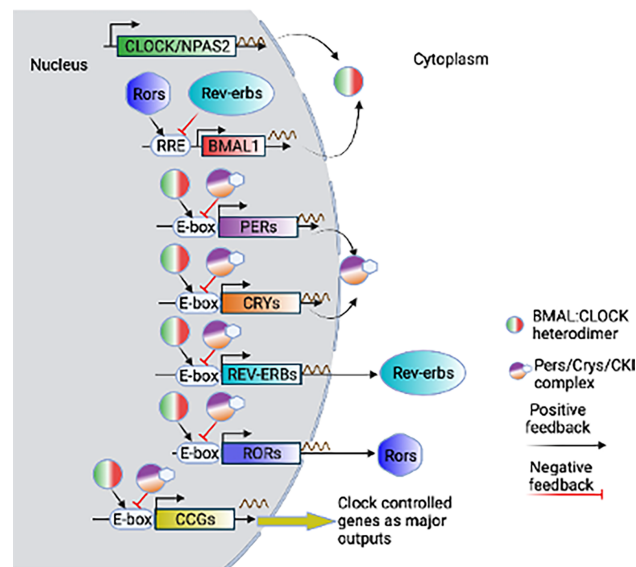


FIG. 1: Molecular clock regulation in humans. The primary positive feedback loop is initiated by the formation of heterodimer of BMAL1 and CLOCK, which acts as a transcription factor to bind to any genes that contains E-box in their promoter region, such as CRYs, PERs, RORs, REV-ERBs and CCGs. The primary negative-feedback loop is initiated by the formation of complex of CRY, PER, and CKI, which acts as an inhibitor to competitively bind to the E-box, thus inhibiting the activation of gene transcription. The other positive and negative feedback loop is involved with the RORs and REV-ERBs, respectively. The RORs and REV-ERBs bind to the RRE (ROR element) in the promoter region of BMAL1, promoting and inhibiting the transcription of BMAL1, respectively. The CCGs are representing thousands of genes that controls cell cycle, lipogenesis, apoptosis, and other essential biological processes. These genes are under the direct control of BMAL1:CLOCK. Image was made with BioRender.

multiple roles in liver cancer, such as anti-inflammation, inhibit cell cycle and proliferation, promote apoptosis, inhibit invasion, migration, angiogenesis and antioxidant effects.⁴² The action of melatonin is through melatonin receptors [melatonin receptor 1 (MT1) and melatonin receptor 2 (MT2)].⁴³ Many studies have shown a strong correlation between melatonin and circadian rhythm. Melatonin's circadian pattern and secretion is controlled by the central clock located at SCN of the hypothalamus.⁴⁴ In addition, melatonin could inhibit the expression of clock genes.⁴⁵ Misalignment of 24-hour melatonin production is correlated with sleep disorder and delayed sleep phase syndrome.⁴⁶ Further, melatonin could inhibit the degradation of the PER and CRY family leading to the stabilization of BMAL1 during the night.⁴⁷

Taken together, the circadian oscillations of core clock genes and the interplay with melatonin could influence the biological activities in both central

nervous system and the local peripheral organs. The crosstalk between the central clock, the peripheral clock and the melatonin regulates the progression of liver cancer.

II. CIRCADIAN RHYTHM AND LIVER DISEASES

A. Circadian Rhythm and Chronic Liver Disease

1. NAFLD

The role of NAFLD in the promotion of liver cancer is becoming an increasing concern. NAFLD can progress to non-alcoholic steatohepatitis (NASH) that is considered one of the main causes of end-stage liver disease, including cancer.^{48,49} Understanding the mechanisms of NAFLD/NASH and finding effective therapeutic targets is necessary considering the global prevalence of NAFLD is ~ 24%.⁴⁸ Sleep

disorders have been associated with NAFLD,⁵⁰ and indeed obstructive sleep apnea (OSA), that can cause restlessness and sleep disturbances, is significantly correlated with steatosis, lobular inflammation and fibrosis in NAFLD patients.⁵¹ Based on this information, changes in circadian rhythm may play a role in NAFLD severity, and in turn liver cancer progression.

At the molecular level, previous work found that the core clock gene *ROR α* can enhance sterol 12 α -hydroxylase (CYP8B1) transcription and subsequent bile acid composition changes and increased cholesterol levels⁵²; however, this work was performed in the context of fasting and is not specifically related to NAFLD/NASH. *CLOCK* mutant (*Clk Δ 19/ Δ 19*) mice present with abnormal circadian rhythms, and eventually develop hepatic steatosis, hyperlipidemia, hyperglycemia and other hallmarks of metabolic syndrome.⁵³ Following this, another paper found unchallenged *Clk Δ 19/ Δ 19* mice develop hepatic steatosis and steatohepatitis, which was accelerated in mice on a Western diet (WD) and further exacerbated in mice fed with WD and injected with lipopolysaccharide.⁵⁴ Another study has found that loss of X-box binding protein 1 (*Xbp1*) disrupts the 12-hour periodic rhythmicity, which in turn perturbs the oscillatory transcription of metabolism genes⁵⁵; however, this study did not find changes in the 24-hour circadian rhythm of clock genes. Interestingly in a model of high sucrose diet fed mice, the amplitude of *ROR γ* , *PER2*, *CRY1* and *CRY2*, and the midline estimating statistic of rhythms (mesors) of *ROR γ* , *PER2* and *CRY1* were enhanced compared with control diet and high-fat diet (HFD) fed mice.⁵⁶ Interestingly, time-restricted feeding (TRF, 8–9 hours of food access during the active phase) prevented increased body weight, inflammation and metabolic disorders in multiple models of obesity, and furthermore temporary interruptions in TRF during the weekend did not disrupt the protective benefits.⁵⁷ Similarly, TRF protected mice from HFD-induced obesity, liver steatosis, inflammation and hyperinsulinemia, and these benefits were mediated by improved circadian oscillations and restoration of the circadian clock and subsequent target genes.⁵⁸ Opposite of this, one study fed mice with a high-fat high-sucrose diet at either the active phase

(night feeding, NF) or the inactive phase (day feeding, DF) to look at changes in associated damage and changes in the circadian clock.⁵⁹ It was noted that DF promoted liver steatosis via upregulation of lipogenesis genes (*Scd-1*, *Acaca*, and *Fasn*) and desynchronization of the hepatic circadian clock; these changes were not noted in NF mice.⁵⁹ These findings identify that feeding time is a significant regulator of liver damage and obesity, which is supported by other work.⁶⁰ In addition, the cannabinoid (CB)-1 receptor can promote hepatocyte lipogenesis through activation of the rhythmically expressed transcription factors SREBP-1c, ChREBP and LXR *in vitro*.⁶¹ Importantly, it was found that histone deacetylase 3 (HDAC-3) is rhythmically expressed and corresponds with the expression of Rev-erb α (a circadian nuclear receptor), and HDAC-3 activity modulates lipid metabolism gene expression to maintain lipid homeostasis.⁶² A thorough and concise review on the link between circadian rhythm and metabolism in NAFLD has been published previously.⁶³

2. ALD

Alcohol consumption increases circulating levels of *PER1* and *CRY1*, along with disturbing *CRY2* oscillation patterns.⁶⁴ Other studies in mice have found that chronic alcohol consumption dysregulates circadian metabolism.⁶⁵ It was also observed that ethanol consumption altered feeding habits in mice, which may in turn perturb circadian clock gene oscillation.⁶⁶ Furthermore, this study found that alcohol altered circadian oscillations of hepatic gene transcription associated with metabolism.⁶⁵ In *Drosophila* models of alcohol exposure, ethanol-induced alterations in circadian rhythm are influenced by sex and age.^{67,68} Similar to this, researchers have discovered that oscillations of both clock genes and CCGs are dysregulated in the livers of mice subjected to chronic ethanol feeding.⁶⁹ Importantly, this study noted that oscillations of hepatic metabolism genes are subjected to the same oscillation alterations following chronic ethanol exposure.⁶⁹ One study found the protective role of circadian rhythm in ethanol-induced liver injury.⁷⁰ Specifically, using liver-specific *Bmal1* knockout (*Bmal1*-LKO) mice subjected to ethanol feeding had exacerbated

liver steatosis and hepatocyte apoptosis by down-regulating de novo lipogenesis and fatty acid oxidation via reduced AKT pathway and ChREBP activity, respectively.⁷⁰ This work is supported by a similar study wherein Bmal1-LKO mice have ethanol-induced hepatic clock disruption and altered rhythmic expression of lipogenesis and fatty acid oxidation genes.⁷¹ Similarly, loss of BMAL1 exacerbated ethanol-induced liver inflammation and disrupted rhythmic expression of glycogen metabolism genes.⁷² Interestingly, one study found that ethanol exposure altered hepatic oscillations of clock genes (BMAL1, CRY1, CRY2, CLOCK, PER1, and PER2) and CCGs; however, these disturbances were not noted in the SCN.⁶⁹ Further work on targeting the circadian rhythm during ALD is necessary.

3. PSC

Little work has been performed to understand changes in clock genes and circadian rhythm during PSC. It was observed an increase of CLOCK, CRY1, BMAL1, and PER1 mRNA expression in the liver of PSC patients compared with control.⁷³ Particularly, cholestatic rats were exposed to light or pinealectomy and had elevated expression of CLOCK, CRY1, BMA1 and PER1 compared with cholestatic rats subjected to a normal 12:12 hour light/dark cycle.⁷³ Opposite of this, the exposure of cholestatic rats to melatonin treatment reduced the expression of PER1, BMAL1, CLOCK and CRY1 compared with cholestatic rats receiving a normal day/night cycle.⁷⁴ These findings show a close association with melatonin signaling, circadian dysregulation and biliary and liver damage in cholestasis, including PSC.

B. Connection between Circadian Rhythm and Liver Cancer

There are a variety of epidemiological and loss-of-function studies that have demonstrated the essential function of core clock genes in reducing cancer risk, including liver cancer. Circadian rhythm disruptions such as jet lag, shifted work, sleep disorders, or shifted light stimulus were found as an independent risk factor for hormone-associated cancer types such

as breast cancer and prostate cancer, as shown by epidemiological studies.^{75,76} Knocking out of CRY1/CRY2 will increase the size of CCA.⁷⁷ Knocking out of PER or CRY would lead to fewer, but larger HCCs, while liver-specific knockout of BMAL1 mice developed a large number, but smaller size, HCCs.⁷⁸ Further, exposing these knockout mice to the chronic jet-lagged condition led to higher tumor incidences and faster tumorigenesis. Figures 2 and 3 described the interaction of circadian rhythm and liver cancer.

Further, studies have shown the direct role of clock genes in tumorigenesis and progression in liver cancer. The core clock gene Neuronal PAS domain protein 2 (NPAS2, analog of CLOCK) was found frequently upregulated in HCC and directly promoted cell survival of HCC via promoting proliferation and inhibiting mitochondria-dependent intrinsic apoptosis. The authors further found this oncogenic role of NPAS2 is promoted by transcriptional activation of Cell Division Cycle 25A (CDC25A).⁷⁹ Further, NPAS2 was able to increase the aerobic glycolysis and suppressed oxidative phosphorylation via hypoxia-inducible factor alpha (HIF-1 α) and peroxisome proliferator-activated receptor gamma coactivator 1 alpha (PGC-1 α) axis.⁸⁰ Another study showed the expression of PER family, CRY2 and Timeless (TIM) was downregulated in HCC. Further, they found the negative correlation of PER2 and PER3 with the tumor size, and that the expression of CCG, WEE1 was downregulated in HCC, while the Cyclin B and CDC2 expressions are upregulated.⁸¹ A loss-of-function study showed chronic jet-lagged mice showed reduced lifespan, and knocking out PER1/PER2, CRY1 and CRY2, or BMAL1 in the liver in chronic jet-lagged mice will cause spontaneous hepatocarcinogenesis, which is mostly due to the disruption of the cholesterol metabolism pathway and bile acid syntheses pathway in the liver.^{78,82}

Although the core clock genes could act as oncogenes or tumor suppressors to promote or inhibit the tumor growth in liver cancer, core clock genes can be transcriptionally regulated by other oncogenes or tumor suppressors in liver cancer.⁸³ MYC proto-oncogene is an important regulator of cell growth and glucose metabolism,⁸⁴ and was

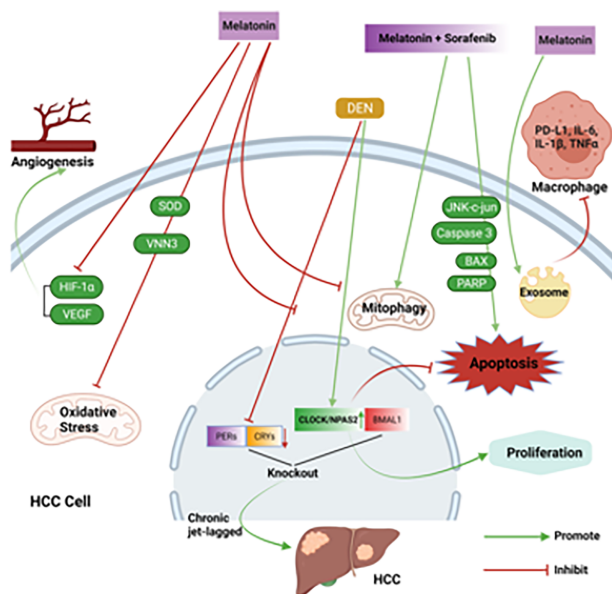


FIG. 2: Melatonin, circadian rhythm, and HCC. Melatonin and sorafenib treatment synergistically promote HCC cell line apoptosis and mitophagy. The expression of angiogenesis biomarkers and oxidative stress were inhibited upon melatonin administration in HCC cell lines. Exosomes derived from HCC with melatonin treatment could lower the PD-L1 levels and the secretion of inflammatory cytokines in macrophages. The core clock gene NPAS2 was upregulated in HCC, which promotes cell proliferation and inhibits apoptosis. Knockout PER1/PER2, CRY1 and CRY2, or BMAL1 in the liver in chronic jet-lagged mice will induce HCC. Melatonin treatment could prevent DEN induced increased expression of clock genes BMAL1, CLOCK and NPAS2, and decreased expression of CRY1 and PERs. Image was made with BioRender.

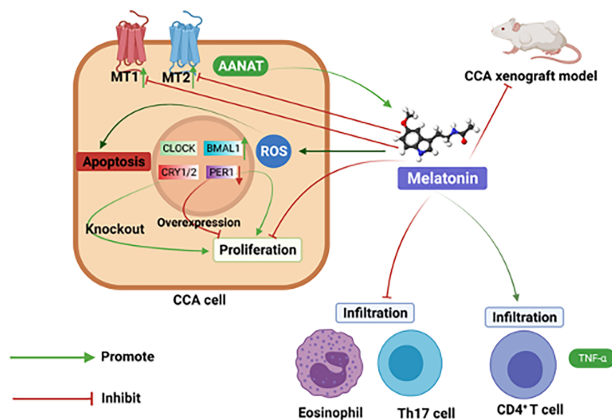


FIG. 3: Melatonin, circadian rhythm, and CCA. Overexpression of AANAT can reduce CCA cell growth. Melatonin treatment inhibits CCA growth in xenograft model and induces CCA apoptosis via activation of ROS pathways. HCC induced increased expression of MT1 and MT2 was suppress by melatonin treatment. The expression of PER1 was decrease in CCA samples, while the expression of BMAL1 was increased. Knocking out of CRY1/CRY2 can promotes CCA growth and overexpression of PER1 inhibits CCA cell growth. Eosinophil and Th17 cell infiltration were reduced in CCA treated with melatonin, while CD4⁺ T cell numbers and TNF- α expression was increased. Image was made with BioRender.

found to be regulated by clock genes,⁸⁵ while in turn being able to directly activate the REV-ERBs and inhibiting BMAL1 expression.⁸⁶ Expression of PER2 could be transcriptionally repressed by P53 to prevent binding to the heterodimer BAML1:-CLOCK. Further, the CCG could epigenetically be regulated by DNA methylation or non-coding RNA, which leads to the regulation of liver cancer-related pathways. miR-34a is a circadian oscillator that directly targets PER1 and inhibits its transcription.⁸⁷ A lncRNA called HULC was also shown to directly target the 5'UTR of CLOCK and promote its expression, thereby enhancing the expression of PER1 and CRY1 in HCC cell lines.⁸⁸ Circadian oscillation of histone modifications often correlated with the transcription of liver CCGs.⁸⁹

Another way that core clock genes regulate liver cancer is through clock output genes. A bioinformatic study reveals many genes that are related to cell cycle, proliferation, apoptosis, metabolism, oncogenesis, and tumor suppression are oscillated under the control of the 24-hour molecular clock.^{90,91} CK1P2 is transcriptionally regulated by REV-ERBs and RORs,⁹¹ and WEE1 is controlled by BAML1:-CLOCK.⁹² MDM2, β -catenin (oncogenes), P53 (tumor suppressor gene), Smad7, Cdk4, and Sox9 were also important and well-known CCGs that mediate tumorigenesis.^{93,94} In addition, the liver, as the major center of the metabolic system, plays a central role in glucose metabolism, fatty acid metabolism, and bile acid synthesis.⁹⁵ These metabolism genes are controlled by the oscillation of the core clock genes. Therefore, disrupted circadian rhythm is also associated with metabolic disorder, especially via nutrient-responsive hormone receptors (NHRs),^{32,96} which could lead to liver cancer.

Limited information about the role of circadian rhythm in CCA is present in the literatures. An early study of circadian rhythm in liver carcinogenesis (HCC/CCA mixed) found that disruptions of circadian oscillations via altered sleep patterns enhanced liver carcinogenesis in mice compared with mice with normal sleep cycles.⁹⁷ When looking at specific clock genes, *Cry1*^{-/-} and *Cry2*^{-/-} mice subjected to toxin-induced CCA developed more pronounced liver damage and had a higher incidence of tumorigenesis.⁷⁷ Moreover, human CCA samples have

reduced PER1, increased BMAL1, but no change in CLOCK or CRY1; loss of PER1 was noted in all CCA cell lines with varying changes of expression of other clock genes.⁸⁷ Importantly, the 24 hour oscillations of CLOCK, CRY1, PER1, and BMAL1 were all altered in human CCA cell lines, validating the fact that core clock signaling is disrupted in CCA.⁸⁷ Since PER1 loss was strong and found in all CCA cell lines, the overexpression of this clock gene was evaluated for CCA therapy. Overexpression of PER1 inhibited CCA cell growth, migration and invasion, and enhanced apoptosis both *in vitro* and *in vivo*.⁸⁷ One study found that PER1 alters the sensitivity of lung cancer cells to chemotherapeutic treatment,⁹⁸ whereas another study found that overexpression of PER1 inhibits glycolysis and cell proliferation in oral squamous cell carcinoma.⁹⁹ Few studies have been performed to evaluate circadian oscillation and CCA etiopathogenesis; therefore, this is an area of research that needs to be expanded.

III. MELATONIN, CIRCADIAN RHYTHM, AND LIVER CANCER

A. Melatonin, Circadian Rhythm, and Chronic Liver Disease

1. NAFLD

As mentioned in previous sessions, chronic liver conditions contribute to the progression of HCC and CCA. Studies have shown crosstalk of melatonin and circadian rhythm in these chronic liver diseases. Multiple studies have identified the protective role of melatonin intake in NAFLD and NASH models. Earlier studies indicated that melatonin treatment reduced hepatic steatosis and inflammation in rats fed with HFD, which was contributed to enhanced antioxidant activities.¹⁰⁰ One study found that melatonin administration was able to reduce body weight, hepatic steatosis, steatohepatitis and liver fibrosis in an HFD-induced model of NAFLD via reduced activation of tumor necrosis factor receptor-associated factors (TRAFs).¹⁰¹ Similarly, it was observed that melatonin treatment reduced hepatic steatosis and fibrosis in an HFD-fed mouse model via enhanced mitochondrial function.¹⁰² In hamsters

fed HFD, melatonin was shown to reduce hepatic steatosis via decreased lipogenesis pathway activity.¹⁰³ Lastly, melatonin treatment reversed hepatic steatosis, inflammation, ET stress and mitochondrial dysfunction and promoted autophagy via reduced miR-34a and sterol regulatory element-binding protein (SREBP1) expression in the presence of silent information regulator 1 (SIRT1) signaling.¹⁰⁴ These findings are important considering the link between melatonin, miR-34a and Per1 in the context of CCA.⁸⁷

2. ALD

Although much work on melatonin in NAFLD/NASH has been performed, little is known about the impact of melatonin on ALD. Interestingly, circadian misalignment in night shift workers may increase the risk of developing alcohol-associated liver damage.⁶⁴ One study found that those with alcohol use disorders have severely impaired sleep along with significantly reduced serum melatonin levels.¹⁰⁵ Melatonin treatment has been shown to reduce alcohol-induced hepatocyte damage, inflammation and immune cell infiltration in mice.¹⁰⁶ Similarly, it is found that melatonin reduced lipid peroxidation in other chronic ethanol fed murine ALD models.¹⁰⁷

3. PSC

Much work has been done to evaluate changes in melatonin signaling in models of PSC. It was demonstrated that melatonin was able to reduce cholangiocyte proliferation in a rodent model of cholestasis, which is important since hyperplastic growth of cholangiocytes can occur during PSC.⁴⁵ Furthermore, the effects of melatonin on cholangiocyte growth are mediated by binding to the MT1, but not the MT2, melatonin receptor.⁴⁵ These findings were confirmed in a rat model of obstructive cholestasis that was subjected to complete darkness (to increase pineal gland melatonin synthesis), wherein dark therapy reduced biliary hyperplasia, as well as liver fibrosis.⁷⁴ At last, the *Mdr2*^{-/-} mouse (murine model of PSC) have reduction of both biliary proliferation and angiogenesis after dark and/or melatonin treatment; this suggested that modulation of melatonin

therapy could be a therapeutic option for PSC.¹⁰⁸ To further validate these findings, one study found that chronic light exposure or pinealectomy (to reduce melatonin levels) exacerbated biliary proliferation and subsequent liver fibrosis in cholestatic rats.⁷³

B. Melatonin, Circadian Rhythm, and HCC

In the liver, melatonin showed a beneficial role in HCC as anti-proliferation, antioxidant, inhibition of invasion, reducing angiogenesis and promoting apoptosis.¹⁰⁹ Sorafenib is the first-line chemotherapy drug to treat advanced HCC¹¹⁰; however, patients often develop chemo-resistance during the therapy leading to the failure of treatment.¹¹¹ Therefore, seeking options to increase the sensitivity to sorafenib will be important in clinical settings. Melatonin and sorafenib treatment synergistically inhibit HuH-7 cell growth via promoting the apoptosis and activation of caspase-3 and JNK-c-jun pathway.¹¹² Another study showed melatonin increased the sensitivity of HCC cells to the sorafenib in two different cell lines, HepG2 and HuH7. Further, melatonin was found to induce susceptibility to the sorafenib in HepG3 accompanied by enhanced PARP hydrolysis expression and BAX and mitophagy when melatonin co-administrated with sorafenib.¹¹³ The interplay among melatonin, circadian rhythm, and CCA is shown in Fig. 2.

Resistance to apoptosis is one of the strategies for HCC progression, evidenced by the upregulation of inhibitor of apoptosis proteins (IAPs).¹¹⁴ Melatonin administration could inhibit the expression of Survivin and X-linked inhibitor of apoptosis proteins (XIAP) in HCC cell lines.¹¹⁴ Further, melatonin also inhibits angiogenesis, proliferation and oxidative stress. For example, the expression of angiogenesis biomarkers (VEGF and HIF-1 α), cell proliferation, invasion, and migration were inhibited in HCC cell lines.¹¹⁵ Another study showed that oxidative stress was inhibited upon melatonin administration in HCC cell lines as indicated by the enhanced gene expression of anti-oxidative stress biomarkers superoxide dismutase and vascular non-inflammatory molecule 3.¹¹⁶ Interestingly, in HCC patients lower one-year survival following liver transplantation is associated with lower serum melatonin levels prior

to transplant.¹¹⁷ Moreover, single nucleotide polymorphisms in the MT1 are associated with increased risk of HCC development.¹¹⁸

Immunotherapy has recently become one of the promising methods for treating HCC. It refers to any treatment that modulates the immunity, which could be a relatively safe option for treating patients who failed to respond to the chemotherapy drugs.¹¹⁹ The PD-L1 level was found correlated with the HCC recurrence. It is noticeable that melatonin treatment-derived exosomes could lower the PD-L1 levels and the secretion of inflammatory cytokines [interleukin (IL)-6 to IL-10, IL-1 β , and tumor necrosis factor alpha (TNF- α)] in macrophages when treated in HCC *in vitro* and *in vivo*.¹²⁰ Furthermore, the study found that this modulation of immunity was through inhibition of STAT2 pathway in macrophages.¹²⁰

Conversely, melatonin was found to modulate the clock gene expression that was disrupted in an HCC rodent model. This study showed enhanced expression of core clock genes BMAL1, CLOCK, NPAS2, RORs, and Sirt1 but decreased expression of CRY1, PERs, and CK1 ϵ in DEN-induced mice model.¹²¹ However, the melatonin treatment could prevent this dysregulation induced by DEN via up-regulation of the MT1 receptor.

C. Melatonin, Circadian Rhythm, and CCA

Considering the close association between melatonin, circadian oscillation and liver damage in different chronic liver diseases that increase the risk of CCA development, understanding disturbances in melatonin/circadian rhythm in CCA is warranted. The interplay between melatonin, circadian rhythm and the CCA is shown in Fig. 3. One study has found that melatonin serum levels, as well as biliary expression of AANAT (synthesizes melatonin) are significantly reduced in human CCA samples compared with control.⁷⁴ These findings were validated in human CCA cell lines.⁷⁴ The overexpression of AANAT in CCA cell lines were able to reduce cell growth, demonstrating an autocrine role for melatonin in modulation of CCA outcomes.⁷⁴ Furthermore, CCA growth was reduced with melatonin treatment in xenograft models.⁷⁴ In line with this,

others have demonstrated that melatonin induces CCA apoptosis via activation of reactive oxygen species pathways.¹²² Another study noted that melatonin treatment reduced tumor size in hamster through increased mitochondrial antioxidant activity.¹²³ These findings are unsurprising considering the largely known impact on antioxidant activity of melatonin. In line with melatonin prevention of CCA progression, another study evaluated melatonin's immunomodulatory effect. Melatonin treatment reduced eosinophil and Th17 cell infiltration in CCA, and further reduced Foxp3 expression in a hamster model of CCA.¹²⁴ In this same study, melatonin enhanced CD4⁺ T cell numbers and TNF- α expression suggesting that melatonin may be therapeutic for CCA treatment via immunomodulatory events.¹²⁴

Melatonin is able to signal through its receptors, MT1 and MT2. It was noted that both MT1 and MT2 expression increased in human CCA cell lines and human biopsy samples, and melatonin treatment was able to suppress the expression of these receptors.¹²⁵ However, this study did not evaluate changes in the downstream mechanisms of MT1/MT2 in CCA. Although modulation of MT1/MT2 has been noted in models of biliary hyperplasia, the impact of targeting these receptors in CCA is unknown. Considering that MT1 and MT2 can have differential effects on damage, understanding their distinct mechanisms in CCA is needed.

IV. TREATMENTS RELATED TO CIRCADIAN RHYTHM AND MELATONIN

The possible modulation of melatonin axis for cancer treatment in humans has been postulated and suggested by several experimental data. For instance, changes of urinary levels of melatonin metabolites or its peak blood levels have been associated with the risk of breast cancer.¹²⁶ On the other hand, some data suggests a possible relationship between circadian rhythm derangement (such as that occurring in night shift workers) and tumor onset, despite the findings seeming controversial.^{127,128} As reported in the previous paragraphs the main primary liver cancers in humans are HCC and CCA, and both are recognized as relevant risk factors

chronic liver diseases.¹²⁹ Therefore, the attenuation or healing of underlying liver disease may possibly reduce hepatic cancer development. In this perspective a study based on 30 NASH patients treated with a 12-week course of melatonin (10 mg/day orally) are encouraging results since a significant decrease of liver enzymes was observed.¹³⁰ Possible effects of melatonin on persistent liver damage also came from a trial examining melatonin treatment (at the same dosage) in subjects with chronic statin-induced liver toxicity.¹³¹ Again, administration of this neurohormone determined a reduction of transaminase levels of nearly one half. With regard to liver injury, another study focused on its high-dose administration (50 mg/kg body weight) in patients undergoing liver resection.¹³² Results evidenced reduced levels of liver enzymes and intensive care unit (ICU) stay with the use of melatonin; however, these differences did not reach statistical significance. Clinical observations on melatonin and HCC come from two studies.^{133,134} In the first, a basket trial comprising 35 patients with advanced cancer of digestive system, six patients with HCC were included. Treatment schedule included melatonin (50 mg/day) and IL-2 (3 million IU/day subcutaneously), and just one HCC patient had disease progression during treatment. More interestingly, in the same group, one subject exhibited a complete response.¹³⁴ A following study examined the possible beneficial effects of melatonin in patients undergoing TACE for HCC.¹³³ Melatonin therapy (20 mg/day) improved TACE efficacy and its two-year survival rate (40% melatonin vs. 26% control; $p < 0.05$). Finally, a more recent case report described the treatment with IL-2, Bacillus Calmette Guerin (BCG), and melatonin (20 mg/day) in a woman with HCC.¹³⁵ After a prolonged course of these drugs this patient exhibited vanishing of tumors and a decrease of α -fetoprotein to normal value. No other clinical attempts have been reported so far in HCC, as well as in CCA. In conclusion, several preclinical data together with the good safety of melatonin treatment may suggest its testing and possible use in liver cancers. Moreover, the most effective drugs employed for HCC systemic therapy are those (such as sorafenib, regorafenib, lenvatinib and so on) that inhibit neoangiogenic cancer processes. In this perspective, melatonin has been

demonstrated to impair vascular growth in several tumor models including HCC which underscores its therapeutic potential for treating liver cancer.¹³⁶ Another approach may be represented by chronotherapy since several clock genes regulate liver biological activities including those possibly related to primary liver cancers development.¹³⁷ In a human study on 24 subjects with metabolic syndrome, the effect of a restricted food intake time (< 10 hours) to adapt to biological clock was endorsed.¹³⁸ There was a significant improvement in all major metabolic indicators (blood pressure, BMI, blood lipid levels and others) after a 12-week course of this restriction. Unfortunately, liver injury was not examined in this cohort of patients, but it is possible to speculate that this manipulation might also attenuate other metabolic syndrome complications such as NAFLD and NASH. Chrono-chemotherapy consisting in delivery of drugs according to particular biologic clock phases is also an approach under evaluation. A phase I study in the early 90s restricted traditional chemotherapy (cisplatin and oxaliplatin) according to circadian rhythm in (a 16-hour slot daily) in comparison with continuous infusion. Nine patients with HCC and two with CCA were included in the study. An improved outcome was not observed; however, administration according to circadian phases was associated to a decrease in adverse effects (neutropenia, paresthesia and vomiting) also allowing an increase of the oxaliplatin dose administered.¹³⁹

A further experience on HCC has been published in abstract form.¹⁴⁰ Twenty-one patients with this primary tumor were divided in two groups. All received a regimen based on the administration of liposome coated cisplatin, but one group received the drug according to daily peak of DNA methyl transferase gene expression while the remnants followed the standard time schedule. Despite the limited number of patients in the study, subjects following a chronotherapy approach had improved results (more frequent and relevant decrease of tumor size and α fetoprotein serum levels). There is no further experience published on primary liver tumors so far; however, at present level of our knowledge and despite some positive results, the chrono-chemotherapy approach has not been demonstrated to significantly improve cancer outcomes in human.¹⁴¹

V. CONCLUSION AND FUTURE PERSPECTIVES

Liver cancer is challenging to treat and highly related to circadian rhythm disturbances. Understanding circadian rhythm and its molecular mechanisms have provided strong implications for the relationship between circadian rhythm, melatonin, and liver cancer. Further, the crosstalk between core clock genes and their upstream and downstream regulators gives us a broader view of the more complicated yet profound effects of circadian clocks on liver cancer. Additionally, the increasing incidence of NAFLD globally alludes to the need to seek more connections between the nutrition homeostasis pathway and the circadian clock, which provides promising future directions to help relieve the burden of public health and eventually decrease the incidence of HCC and CCA. Indeed, the interplay between feeding time, metabolic change, gut microbiota, metabolism, and the circadian rhythm has played a pivotal role in alleviating NAFLD-related hepatic inflammation and fibrosis. Finally, the chronotherapy and circadian rhythm-based clinical application showed us great potential for the impact of circadian research in liver cancer. The circadian-related studies changed our mindset for medical practice, making both the physician consider the fact of light, feeding time and how to take advantage of circadian intervention to maximize the effects of treatment. In the future, more applications from the bench to the bedside are expected to see to improve the patient's life, and novel target or candidate pathways crosstalk with circadian regulation are expected to uncover when elucidating the tumorigenesis and progression of cancer.

ACKNOWLEDGMENTS

This work was supported by a Hickam Endowed Chair, Gastroenterology, Medicine, Indiana University; the Indiana University Health – Indiana University School of Medicine Strategic Research Initiative; the SRCS and RCS Awards and VA Merit Awards to G.A. (5I01BX000574) and H.F. (1I01BX003031), and a VA CDA-2 Award to L.K. (1IK2BX005306) from the U.S. Department of Veteran's Affairs, Biomedical Laboratory Research and Development

Service; NIH grants DK108959 and DK119421 to H.F.; NIH grants DK054811, DK115184, DK076898, DK107310, DK110035, DK062975 and AA028711 to S.G. and G.A.; the PSC Partners Seeking a Cure to G.A.; and the AASLD Foundation Autoimmune Liver Disease Pilot Award to L.K. This material is the result of work supported by resources at Richard L. Roudebush VA Medical Center, Indianapolis, IN. The content is the responsibility of the author(s) alone and does not necessarily reflect the views or policies of the Department of Veterans Affairs or the United States Government.

REFERENCES

1. Arnold M, Abnet CC, Neale RE, Vignat J, Giovannucci EL, McGlynn KA, Bray F. Global burden of 5 major types of gastrointestinal cancer. *Gastroenterology*. 2020 1;159(1):335–49.
2. Forner A, Reig M, Bruix J. Hepatocellular carcinoma. *Lancet*. 2018;391(10127):1301–14.
3. Bray F, Ferlay J, Soerjomataram I, Siegel RL, Torre LA, Jemal A. Global cancer statistics 2018: GLOBOCAN estimates of incidence and mortality worldwide for 36 cancers in 185 countries. *CA Cancer J Clin*. 2018;68(6):394–424.
4. Llovet JM, Zucman-Rossi J, Pikarsky E, Sangro B, Schwartz M, Sherman M, Gores G. Hepatocellular carcinoma. *Nat Rev Dis Primers*. 2016;2:16018.
5. Kim E, Viatour P. Hepatocellular carcinoma: Old friends and new tricks. *Exp Mol Med*. 2020;52(12):1898–1907.
6. Rich NE, Yopp AC, Singal AG, Murphy CC. Hepatocellular carcinoma incidence is decreasing among younger adults in the United States. *Clin Gastroenterol Hepatol*. 2020;18(1):242–8.e245.
7. Prieto-Dominguez N, Mendez-Blanco C, Carbajo-Pescador S, Fondevila F, Garcia-Palomo A, Gonzalez-Gallego J, Mauriz JL. Melatonin enhances sorafenib actions in human hepatocarcinoma cells by inhibiting mTORC1/p70S6K/HIF-1 α and hypoxia-mediated mitophagy. *Oncotarget*. 2017;8(53):91402–14.
8. Razumilava N, Gores GJ. Cholangiocarcinoma. *Lancet*. 2014;383(9935):2168–79.
9. Bridgewater J, Galle PR, Khan SA, Llovet JM, Park JW, Patel T, Pawlik TM, Gores GJ. Guidelines for the diagnosis and management of intrahepatic cholangiocarcinoma. *J Hepatol*. 2014;60(6):1268–89.
10. Khan SA, Tavolari S, Brandi G. Cholangiocarcinoma: Epidemiology and risk factors. *Liver Int*. 2019;39(Suppl 1):19–31.
11. Krasinskas AM. Cholangiocarcinoma. *Surg Pathol Clin*. 2018;11(2):403–29.
12. Dodson RM, Weiss MJ, Cosgrove D, Herman JM, Kamel

- I, Anders R, Geschwind JF, Pawlik TM. Intrahepatic cholangiocarcinoma: Management options and emerging therapies. *J Am Coll Surg*. 2013;217(4):736–50.e734.
13. Burak K, Angulo P, Pasha TM, Egan K, Petz J, Lindor KD. Incidence and risk factors for cholangiocarcinoma in primary sclerosing cholangitis. *Am J Gastroenterol*. 2004;99(3):523–6.
 14. Nathan H, Pawlik TM, Wolfgang CL, Choti MA, Cameron JL, Schulick RD. Trends in survival after surgery for cholangiocarcinoma: A 30-year population-based SEER database analysis. *J Gastrointest Surg*. 2007;11(11):1488–96; discussion 1496–7.
 15. Buckholz AP, Brown RS Jr. Cholangiocarcinoma: Diagnosis and management. *Clin Liver Dis*. 2020;24(3):421–36.
 16. Villanueva A. Hepatocellular Carcinoma. *N Engl J Med*. 2019;380(15):1450–62.
 17. Fernandez-Palanca P, Mendez-Blanco C, Fondevila F, Tunon MJ, Reiter RJ, Mauriz JL, Gonzalez-Gallego J. Melatonin as an antitumor agent against liver cancer: An updated systematic review. *Antioxidants*. 2021;10(1):103.
 18. Guerreiro AS, Neves BC, Quina MG. Omeprazole in the treatment of peptic ulcers resistant to H2-receptor antagonists. *Aliment Pharmacol Ther*. 1990;4(3):309–13.
 19. Tyson GL, El-Serag HB. Risk factors for cholangiocarcinoma. *Hepatology*. 2011;54(1):173–84.
 20. McGlynn KA, Petrick JL, El-Serag HB. Epidemiology of hepatocellular carcinoma. *Hepatology*. 2021;73(Suppl 1):4–13.
 21. Shah NM, Malhotra AM, Kaltsakas G. Sleep disorder in patients with chronic liver disease: A narrative review. *J Thorac Dis*. 2020;12(Suppl 2):S248–60.
 22. De Cruz S, Espiritu JR, Zeidler M, Wang TS. Sleep disorders in chronic liver disease. *Semin Respir Crit Care Med*. 2012;33(1):26–35.
 23. Tana MM, Alao H, Morris N, Bernstein S, Hattenbach J, Rehman RB, Brychta R, Sarkar S, Zhao X, Walter M, Buckley A, Chen K, Rotman Y. Fatigued patients with chronic liver disease have subtle aberrations of sleep, melatonin and cortisol circadian rhythms. *Fatigue*. 2018;6(1):5–19.
 24. Xie X, Guo A, Wu T, Hu Q, Huang L, Yao C, Zhao B, Zhang W, Chi B, Lu P, Zhao Z, Fu Z. Preventive effect of L-carnitine on the disorder of lipid metabolism and circadian clock of mice subjected to chronic jet-lag. *Physiol Res*. 2017;66(5):801–10.
 25. Liang JA, Sun LM, Muo CH, Sung FC, Chang SN, Kao CH. Non-apnea sleep disorders will increase subsequent liver cancer risk—a nationwide population-based cohort study. *Sleep Med*. 2012;13(7):869–74.
 26. Huang TW, Cheung DST, Xu X, Loh EW, Lai JH, Su WW, Wu SS, Lin CC. Relationship between diurnal cortisol profile and sleep quality in patients with hepatocellular carcinoma. *Biol Res Nurs*. 2020;22(1):139–47.
 27. Balsalobre A, Brown SA, Marcacci L, Tronche F, Kellendonk C, Reichardt HM, Schutz G, Schibler U. Resetting of circadian time in peripheral tissues by glucocorticoid signaling. *Science*. 2000;289(5488):2344–7.
 28. Mohawk JA, Green CB, Takahashi JS. Central and peripheral circadian clocks in mammals. *Annu Rev Neurosci*. 2012;35:445–62.
 29. Plano SA, Casiraghi LP, Garcia Moro P, Paladino N, Golombek DA, Chiesa JJ. Circadian and metabolic effects of light: Implications in weight homeostasis and health. *Front Neurol*. 2017;8:558.
 30. Segers A, Depoortere I. Circadian clocks in the digestive system. *Nat Rev Gastroenterol Hepatol*. 2021;18(4):239–51.
 31. von Schantz M, Archer SN. Clocks, genes and sleep. *J R Soc Med*. 2003;96(10):486–9.
 32. Reinke H, Asher G. Crosstalk between metabolism and circadian clocks. *Nat Rev Mol Cell Biol*. 2019;20(4):227–41.
 33. Patke A, Young MW, Axelrod S. Molecular mechanisms and physiological importance of circadian rhythms. *Nat Rev Mol Cell Biol*. 2020;21(2):67–84.
 34. Tahara Y, Shibata S. Circadian rhythms of liver physiology and disease: Experimental and clinical evidence. *Nat Rev Gastroenterol Hepatol*. 2016;13(4):217–26.
 35. Ko CH, Takahashi JS. Molecular components of the mammalian circadian clock. *Hum Mol Genet*. 2006;15 Spec No 2:R271–7.
 36. Akashi M, Takumi T. The orphan nuclear receptor ROR α regulates circadian transcription of the mammalian core-clock Bmal1. *Nat Struct Mol Biol*. 2005;12(5):441–8.
 37. Guillaumond F, Dardente H, Giguere V, Cermakian N. Differential control of Bmal1 circadian transcription by REV-ERB and ROR nuclear receptors. *J Biol Rhythms*. 2005;20(5):391–403.
 38. Preitner N, Damiola F, Lopez-Molina L, Zakany J, Duboule D, Albrecht U, Schibler U. The orphan nuclear receptor REV-ERB α controls circadian transcription within the positive limb of the mammalian circadian oscillator. *Cell*. 2002;110(2):251–60.
 39. Solt LA, Kojetin DJ, Burris TP. The REV-ERBs and RORs: Molecular links between circadian rhythms and lipid homeostasis. *Future Med Chem*. 2011;3(5):623–38.
 40. Gutierrez RA, Ewing RM, Cherry JM, Green PJ. Identification of unstable transcripts in Arabidopsis by cDNA microarray analysis: Rapid decay is associated with a group of touch- and specific clock-controlled genes. *Proc Natl Acad Sci U S A*. 2002;99(17):11513–8.
 41. Mure LS, Le HD, Benegiamo G, Chang MW, Rios L, Jillani N, Ngotho M, Kariuki T, Dkhissi-Benyahya O, Cooper HM, Panda S. Diurnal transcriptome atlas of a primate across major neural and peripheral tissues. *Science*. 2018;359(6381):eaa0318.
 42. Bonmati-Carrion MA, Tomas-Loba A. Melatonin and cancer: A polyhedral network where the source matters. *Antioxidants*. 2021;10(2):210.
 43. Reppert SM. Melatonin receptors: Molecular biology

- of a new family of G protein-coupled receptors. *J Biol Rhythms*. 1997;12(6):528–31.
44. Doghramji K. Melatonin and its receptors: A new class of sleep-promoting agents. *J Clin Sleep Med*. 2007;3(Suppl 5):S17–23.
 45. Renzi A, Glaser S, Demorrow S, Mancinelli R, Meng F, Franchitto A, Venter J, White M, Francis H, Han Y, Alvaro D, Gaudio E, Carpino G, Ueno Y, Onori P, Alpini G. Melatonin inhibits cholangiocyte hyperplasia in cholestatic rats by interaction with MT1 but not MT2 melatonin receptors. *Am J Physiol Gastrointest Liver Physiol*. 2011;301(4):G634–43.
 46. Skene DJ, Arendt J. Circadian rhythm sleep disorders in the blind and their treatment with melatonin. *Sleep Med*. 2007;8(6):651–5.
 47. Vriend J, Reiter RJ. Melatonin feedback on clock genes: A theory involving the proteasome. *J Pineal Res*. 2015;58(1):1–11.
 48. Younossi Z, Anstee QM, Marietti M, Hardy T, Henry L, Eslam M, George J, Bugianesi E. Global burden of NAFLD and NASH: Trends, predictions, risk factors and prevention. *Nat Rev Gastroenterol Hepatol*. 2018;15(1):11–20.
 49. Younossi Z, Stepanova M, Ong JP, Jacobson IM, Bugianesi E, Duseja A, Eguchi Y, Wong VW, Negro F, Yilmaz Y, Romero-Gomez M, George J, Ahmed A, Wong R, Younossi I, Ziaee M, Afendy A, Global Nonalcoholic Steatohepatitis Council. Nonalcoholic steatohepatitis is the fastest growing cause of hepatocellular carcinoma in liver transplant candidates. *Clin Gastroenterol Hepatol*. 2019;17(4):748–55.e743.
 50. Vernia F, Di Ruscio M, Ciccone A, Viscido A, Frieri G, Stefanelli G, Latella G. Sleep disorders related to nutrition and digestive diseases: A neglected clinical condition. *Int J Med Sci*. 2021;18(3):593–603.
 51. Jin S, Jiang S, Hu A. Association between obstructive sleep apnea and non-alcoholic fatty liver disease: A systematic review and meta-analysis. *Sleep Breath*. 2018;22(3):841–51.
 52. Pathak P, Li T, Chiang JY. Retinoic acid-related orphan receptor alpha regulates diurnal rhythm and fasting induction of sterol 12alpha-hydroxylase in bile acid synthesis. *J Biol Chem*. 2013;288(52):37154–65.
 53. Turek FW, Joshu C, Kohsaka A, Lin E, Ivanova G, McDearmon E, Laposky A, Losee-Olson S, Easton A, Jensen DR, Eckel RH, Takahashi JS, Bass J. Obesity and metabolic syndrome in circadian Clock mutant mice. *Science*. 2005;308(5724):1043–5.
 54. Pan X, Queiroz J, Hussain MM. Nonalcoholic fatty liver disease in CLOCK mutant mice. *J Clin Invest*. 2020;130(8):4282–300.
 55. Meng H, Gonzales NM, Lonard DM, Putluri N, Zhu B, Dacso CC, York B, O'Malley BW. XBP1 links the 12-hour clock to NAFLD and regulation of membrane fluidity and lipid homeostasis. *Nat Commun*. 2020;11(1):6215.
 56. Li D, Ikaga R, Ogawa H, Yamazaki T. Different expressions of clock genes in fatty liver induced by high-sucrose and high-fat diets. *Chronobiol Int*. 2021;38(5):762–78.
 57. Chaix A, Zarrinpar A, Miu P, Panda S. Time-restricted feeding is a preventative and therapeutic intervention against diverse nutritional challenges. *Cell Metab*. 2014;20(6):991–1005.
 58. Hatori M, Vollmers C, Zarrinpar A, DiTacchio L, Bushong EA, Gill S, Leblanc M, Chaix A, Joens M, Fitzpatrick JA, Ellisman MH, Panda S. Time-restricted feeding without reducing caloric intake prevents metabolic diseases in mice fed a high-fat diet. *Cell Metab*. 2012;15(6):848–60.
 59. Yasumoto Y, Hashimoto C, Nakao R, Yamazaki H, Hiroyama H, Nemoto T, Yamamoto S, Sakurai M, Oike H, Wada N, Yoshida-Noro C, Oishi K. Short-term feeding at the wrong time is sufficient to desynchronize peripheral clocks and induce obesity with hyperphagia, physical inactivity and metabolic disorders in mice. *Metabolism*. 2016;65(5):714–27.
 60. Okauchi H, Hashimoto C, Nakao R, Oishi K. Timing of food intake is more potent than habitual voluntary exercise to prevent diet-induced obesity in mice. *Chronobiol Int*. 2019;36(1):57–74.
 61. Shi D, Zhan X, Yu X, Jia M, Zhang Y, Yao J, Hu X, Bao Z. Inhibiting CB1 receptors improves lipogenesis in an in vitro non-alcoholic fatty liver disease model. *Lipids Health Dis*. 2014;13:173.
 62. Feng D, Liu T, Sun Z, Bugge A, Mullican SE, Alenghat T, Liu XS, Lazar MA. A circadian rhythm orchestrated by histone deacetylase 3 controls hepatic lipid metabolism. *Science*. 2011;331(6022):1315–9.
 63. Shi D, Chen J, Wang J, Yao J, Huang Y, Zhang G, Bao Z. Circadian clock genes in the metabolism of non-alcoholic fatty liver disease. *Front Physiol*. 2019;10:423.
 64. Swanson GR, Gorenz A, Shaikh M, Desai V, Kaminsky T, Van Den Berg J, Murphy T, Raeisi S, Fogg L, Vitaterna MH, Forsyth C, Turek F, Burgess HJ, Keshavarzian A. Night workers with circadian misalignment are susceptible to alcohol-induced intestinal hyperpermeability with social drinking. *Am J Physiol Gastrointest Liver Physiol*. 2016;311(1):G192–201.
 65. Gaucher J, Kinouchi K, Ceglia N, Montellier E, Peleg S, Greco CM, Schmidt A, Forne I, Masri S, Baldi P, Imhof A, Sassone-Corsi P. Distinct metabolic adaptation of liver circadian pathways to acute and chronic patterns of alcohol intake. *Proc Natl Acad Sci U S A*. 2019;116(50):25250–9.
 66. Zhou P, Werner JH, Lee D, Sheppard AD, Liangpunsakul S, Duffield GE. Dissociation between diurnal cycles in locomotor activity, feeding behavior and hepatic PERIOD2 expression in chronic alcohol-fed mice. *Alcohol*. 2015;49(4):399–408.
 67. De Nobrega AK, Mellers AP, Lyons LC. Aging and circadian dysfunction increase alcohol sensitivity and exacerbate mortality in *Drosophila melanogaster*. *Exp Gerontol*. 2017;97:49–59.
 68. De Nobrega AK, Lyons LC. Circadian modulation of

- alcohol-induced sedation and recovery in male and female *Drosophila*. *J Biol Rhythms*. 2016;31(2):142–60.
69. Filiano AN, Millender-Swain T, Johnson R Jr, Young ME, Gamble KL, Bailey SM. Chronic ethanol consumption disrupts the core molecular clock and diurnal rhythms of metabolic genes in the liver without affecting the suprachiasmatic nucleus. *PLoS One*. 2013;8(8):e71684.
 70. Zhang D, Tong X, Nelson BB, Jin E, Sit J, Charney N, Yang M, Omary MB, Yin L. The hepatic BMAL1/AKT/lipogenesis axis protects against alcoholic liver disease in mice via promoting PPARalpha pathway. *Hepatology*. 2018;68(3):883–96.
 71. Valcin JA, Udoh US, Swain TM, Andringa KK, Patel CR, Al Diffalha S, Baker PRS, Gamble KL, Bailey SM. Alcohol and liver clock disruption increase small droplet macrosteatosis, alter lipid metabolism and clock gene mRNA rhythms, and remodel the triglyceride lipidome in mouse liver. *Front Physiol*. 2020;11:1048.
 72. Udoh US, Valcin JA, Swain TM, Filiano AN, Gamble KL, Young ME, Bailey SM. Genetic deletion of the circadian clock transcription factor BMAL1 and chronic alcohol consumption differentially alter hepatic glycogen in mice. *Am J Physiol Gastrointest Liver Physiol*. 2018;314(3):G431–47.
 73. Chen L, Zhou T, Wu N, O'Brien A, Venter J, Ceci L, Kyritsi K, Onori P, Gaudio E, Sybenga A, Xie L, Wu C, Fabris L, Invernizzi P, Zawieja D, Liangpunsakul S, Meng F, Francis H, Alpini G, Huang Q, Glaser S. Pinealectomy or light exposure exacerbates biliary damage and liver fibrosis in cholestatic rats through decreased melatonin synthesis. *Biochim Biophys Acta Mol Basis Dis*. 2019;1865(6):1525–39.
 74. Han Y, Onori P, Meng F, DeMorrow S, Venter J, Francis H, Franchitto A, Ray D, Kennedy L, Greene J, Renzi A, Mancinelli R, Gaudio E, Glaser S, Alpini G. Prolonged exposure of cholestatic rats to complete dark inhibits biliary hyperplasia and liver fibrosis. *Am J Physiol Gastrointest Liver Physiol*. 2014;307(9):G894–904.
 75. Wendeu-Foyet MG, Menegaux F. Circadian disruption and prostate cancer risk: An updated review of epidemiological evidences. *Cancer Epidemiol Biomarkers Prev*. 2017;26(7):985–91.
 76. Leonardi GC, Rapisarda V, Marconi A, Scalisi A, Catalano F, Proietti L, Travali S, Libra M, Fenga C. Correlation of the risk of breast cancer and disruption of the circadian rhythm (Review). *Oncol Rep*. 2012;28(2):418–28.
 77. Mteyrek A, Filipinski E, Guettier C, Oklejewicz M, van der Horst GT, Okyar A, Levi F. Critical cholangiocarcinogenesis control by cryptochrome clock genes. *Int J Cancer*. 2017;140(11):2473–83.
 78. Kettner NM, Voicu H, Finegold MJ, Coarfa C, Sreekumar A, Putluri N, Katchy CA, Lee C, Moore DD, Fu L. Circadian homeostasis of liver metabolism suppresses hepatocarcinogenesis. *Cancer Cell*. 2016;30(6):909–24.
 79. Yuan P, Li J, Zhou F, Huang Q, Zhang J, Guo X, Lyu Z, Zhang H, Xing J. NPAS2 promotes cell survival of hepatocellular carcinoma by transactivating CDC25A. *Cell Death Dis*. 2017;8(3):e2704.
 80. Yuan P, Yang T, Mu J, Zhao J, Yang Y, Yan Z, Hou Y, Chen C, Xing J, Zhang H, Li J. Circadian clock gene NPAS2 promotes reprogramming of glucose metabolism in hepatocellular carcinoma cells. *Cancer Lett*. 2020;469:498–509.
 81. Lin YM, Chang JH, Yeh KT, Yang MY, Liu TC, Lin SF, Su WW, Chang JG. Disturbance of circadian gene expression in hepatocellular carcinoma. *Mol Carcinog*. 2008;47(12):925–33.
 82. Lee S, Donehower LA, Herron AJ, Moore DD, Fu L. Disrupting circadian homeostasis of sympathetic signaling promotes tumor development in mice. *PLoS One*. 2010;5(6):e10995.
 83. Fekry B, Ribas-Latre A, Baumgartner C, Deans JR, Kwok C, Patel P, Fu L, Berdeaux R, Sun K, Kolonin MG, Wang SH, Yoo SH, Sladek FM, Eckel-Mahan K. Incompatibility of the circadian protein BMAL1 and HNF4alpha in hepatocellular carcinoma. *Nat Commun*. 2018;9(1):4349.
 84. Stine ZE, Walton ZE, Altman BJ, Hsieh AL, Dang CV. MYC, metabolism, and cancer. *Cancer Discov*. 2015;5(10):1024–39.
 85. Fu L, Pelicano H, Liu J, Huang P, Lee C. The circadian gene *Period2* plays an important role in tumor suppression and DNA damage response in vivo. *Cell*. 2002;111(1):41–50.
 86. Altman BJ, Hsieh AL, Sengupta A, Krishnanaiyah SY, Stine ZE, Walton ZE, Gouw AM, Venkataraman A, Li B, Goraksha-Hicks P, Diskin SJ, Bellovin DI, Simon MC, Rathmell JC, Lazar MA, Maris JM, Felsher DW, Hogenesch JB, Weljie AM, Dang CV. MYC disrupts the circadian clock and metabolism in cancer cells. *Cell Metab*. 2015;22(6):1009–19.
 87. Han Y, Meng F, Venter J, Wu N, Wan Y, Standeford H, Francis H, Meininger C, Greene J Jr, Trzeciakowski JP, Ehrlich L, Glaser S, Alpini G. miR-34a-dependent overexpression of *Per1* decreases cholangiocarcinoma growth. *J Hepatol*. 2016;64(6):1295–304.
 88. Cui M, Zheng M, Sun B, Wang Y, Ye L, Zhang X. A long noncoding RNA perturbs the circadian rhythm of hepatoma cells to facilitate hepatocarcinogenesis. *Neoplasia*. 2015;17(1):79–88.
 89. Vollmers C, Schmitz RJ, Nathanson J, Yeo G, Ecker JR, Panda S. Circadian oscillations of protein-coding and regulatory RNAs in a highly dynamic mammalian liver epigenome. *Cell Metab*. 2012;16(6):833–45.
 90. Feillet C, van der Horst GT, Levi F, Rand DA, Delaunay F. Coupling between the circadian clock and cell cycle oscillators: Implication for healthy cells and malignant growth. *Front Neurol*. 2015;6:96.
 91. Grechez-Cassiau A, Rayet B, Guillaumond F, Teboul M, Delaunay F. The circadian clock component BMAL1 is a critical regulator of p21WAF1/CIP1 expression and hepatocyte proliferation. *J Biol Chem*. 2008;283(8):4535–42.
 92. Matsuo T, Yamaguchi S, Mitsui S, Emi A, Shimoda

- F, Okamura H. Control mechanism of the circadian clock for timing of cell division in vivo. *Science*. 2003;302(5643):255–9.
93. Fu L, Kettner NM. The circadian clock in cancer development and therapy. *Prog Mol Biol Transl Sci*. 2013;119:221–82.
 94. Storch KF, Lipan O, Leykin I, Viswanathan N, Davis FC, Wong WH, Weitz CJ. Extensive and divergent circadian gene expression in liver and heart. *Nature*. 2002;417(6884):78–83.
 95. Feng D, Lazar MA. Clocks, metabolism, and the epigenome. *Mol Cell*. 2012;47(2):158–67.
 96. Reinke H, Asher G. Circadian clock control of liver metabolic functions. *Gastroenterology*. 2016;150(3):574–80.
 97. Filipski E, Subramanian P, Carriere J, Guettier C, Barbaçon H, Levi F. Circadian disruption accelerates liver carcinogenesis in mice. *Mutat Res*. 2009;680(1-2):95–105.
 98. Bellet MM, Stincardini C, Costantini C, Gargaro M, Pieroni S, Castelli M, Piobbico D, Sassone-Corsi P, Della-Fazia MA, Romani L, Servillo G. The circadian protein PER1 modulates the cellular response to anticancer treatments. *Int J Mol Sci*. 2021;22(6):2974.
 99. Gong X, Tang H, Yang K. PER1 suppresses glycolysis and cell proliferation in oral squamous cell carcinoma via the PER1/RACK1/PI3K signaling complex. *Cell Death Dis*. 2021;12(3):276.
 100. Pan M, Song YL, Xu JM, Gan HZ. Melatonin ameliorates nonalcoholic fatty liver induced by high-fat diet in rats. *J Pineal Res*. 2006;41(1):79–84.
 101. Li DJ, Tong J, Li YH, Meng HB, Ji QX, Zhang GY, Zhu JH, Zhang WJ, Zeng FY, Huang G, Hua X, Shen FM, Wang P. Melatonin safeguards against fatty liver by antagonizing TRAFs-mediated ASK1 deubiquitination and stabilization in a beta-arrestin-1 dependent manner. *J Pineal Res*. 2019;67(4):e12611.
 102. Zhou H, Du W, Li Y, Shi C, Hu N, Ma S, Wang W, Ren J. Effects of melatonin on fatty liver disease: The role of NR4A1/DNA-PKcs/p53 pathway, mitochondrial fission, and mitophagy. *J Pineal Res*. 2018;64(1):12450.
 103. Ou TH, Tung YT, Yang TH, Chien YW. Melatonin improves fatty liver syndrome by inhibiting the lipogenesis pathway in hamsters with high-fat diet-induced hyperlipidemia. *Nutrients*. 2019;11(4):748.
 104. Stacchiotti A, Grossi I, Garcia-Gomez R, Patel GA, Salvi A, Lavazza A, De Petro G, Monsalve M, Rezzani R. Melatonin effects on non-alcoholic fatty liver disease are related to microRNA-34a-5p/Sirt1 axis and autophagy. *Cells*. 2019;8(9):1053.
 105. Swanson GR, Gorenz A, Shaikh M, Desai V, Forsyth C, Fogg L, Burgess HJ, Keshavarzian A. Decreased melatonin secretion is associated with increased intestinal permeability and marker of endotoxemia in alcoholics. *Am J Physiol Gastrointest Liver Physiol*. 2015;308(12):G1004–11.
 106. Hu S, Yin S, Jiang X, Huang D, Shen G. Melatonin protects against alcoholic liver injury by attenuating oxidative stress, inflammatory response, and apoptosis. *Eur J Pharmacol*. 2009;616(1-3):287–92.
 107. El-Sokkary GH, Reiter RJ, Tan DX, Kim SJ, Cabrera J. Inhibitory effect of melatonin on products of lipid peroxidation resulting from chronic ethanol administration. *Alcohol Alcohol*. 1999;34(6):842–50.
 108. Wu N, Meng F, Zhou T, Han Y, Kennedy L, Venter J, Francis H, DeMorrow S, Onori P, Invernizzi P, Bernuzzi F, Mancinelli R, Gaudio E, Franchitto A, Glaser S, Alpini G. Prolonged darkness reduces liver fibrosis in a mouse model of primary sclerosing cholangitis by miR-200b down-regulation. *FASEB J*. 2017;31(10):4305–24.
 109. Mortezaee K. Human hepatocellular carcinoma: Protection by melatonin. *J Cell Physiol*. 2018;233(10):6486–508.
 110. Raoul JL, Adhoue X, Penaranda G, Perrier H, Castellani P, Oules V, Bourliere M. Sorafenib: Experience and better management of side effects improve overall survival in hepatocellular carcinoma patients: A real-life retrospective analysis. *Liver Cancer*. 2019;8(6):457–67.
 111. Cabral LKD, Tiribelli C, Sukowati CHC. Sorafenib resistance in hepatocellular carcinoma: The relevance of genetic heterogeneity. *Cancers*. 2020;12(6):1576.
 112. Lin S, Hoffmann K, Gao C, Petruionis M, Herr I, Schemmer P. Melatonin promotes sorafenib-induced apoptosis through synergistic activation of JNK/c-jun pathway in human hepatocellular carcinoma. *J Pineal Res*. 2017;62(3):12398.
 113. Prieto-Dominguez N, Ordonez R, Fernandez A, Mendez-Blanco C, Baulies A, Garcia-Ruiz C, Fernandez-Checa JC, Mauriz JL, Gonzalez-Gallego J. Melatonin-induced increase in sensitivity of human hepatocellular carcinoma cells to sorafenib is associated with reactive oxygen species production and mitophagy. *J Pineal Res*. 2016;61(3):396–407.
 114. Fan L, Sun G, Ma T, Zhong F, Wei W. Melatonin overcomes apoptosis resistance in human hepatocellular carcinoma by targeting survivin and XIAP. *J Pineal Res*. 2013;55(2):174–83.
 115. Colombo J, Maciel JM, Ferreira LC, RF DAS, Zuccari DA. Effects of melatonin on HIF-1 α and VEGF expression and on the invasive properties of hepatocarcinoma cells. *Oncol Lett*. 2016;12(1):231–7.
 116. Lin ZY, Chuang WL. Pharmacologic concentrations of melatonin have diverse influence on differential expressions of angiogenic chemokine genes in different hepatocellular carcinoma cell lines. *Biomed Pharmacother*. 2010;64(10):659–62.
 117. Lorente L, Rodriguez ST, Sanz P, Abreu-Gonzalez P, Gonzalez-Rivero AF, Perez-Cejas A, Padilla J, Diaz D, Gonzalez A, Martin MM, Jimenez A, Cerro P, Portero J, Barrera MA. Low serum melatonin levels prior to liver transplantation in patients with hepatocellular carcinoma are associated with lower survival after liver transplantation. *Int J Mol Sci*. 2019;20(7):1696.
 118. Su SC, Ho YC, Liu YF, Reiter RJ, Chou CH, Yeh CM, Lee

- HL, Chung WH, Hsieh MJ, Yang SF. Association of melatonin membrane receptor 1A/1B gene polymorphisms with the occurrence and metastasis of hepatocellular carcinoma. *Oncotarget*. 2017;8(49):85655–69.
119. Ghavimi S, Apfel T, Azimi H, Persaud A, Pysopoulos NT. Management and treatment of hepatocellular carcinoma with immunotherapy: A review of current and future options. *J Clin Transl Hepatol*. 2020;8(2):168–76.
 120. Cheng L, Liu J, Liu Q, Liu Y, Fan L, Wang F, Yu H, Li Y, Bu L, Li X, Wei W, Wang H, Sun G. Exosomes from melatonin treated hepatocellular carcinoma cells alter the immunosuppression status through STAT3 pathway in macrophages. *Int J Biol Sci*. 2017;13(6):723–34.
 121. Sanchez DI, Gonzalez-Fernandez B, Crespo I, San-Miguel B, Alvarez M, Gonzalez-Gallego J, Tunon MJ. Melatonin modulates dysregulated circadian clocks in mice with diethylnitrosamine-induced hepatocellular carcinoma. *J Pineal Res*. 2018;65(3):e12506.
 122. Laothong U, Hiraku Y, Oikawa S, Intuyod K, Murata M, Pinlaor S. Melatonin induces apoptosis in cholangiocarcinoma cell lines by activating the reactive oxygen species-mediated mitochondrial pathway. *Oncol Rep*. 2015;33(3):1443–9.
 123. Laothong U, Pinlaor P, Boonsiri P, Pairojkul C, Priprem A, Johns NP, Charoensuk L, Intuyod K, Pinlaor S. Melatonin inhibits cholangiocarcinoma and reduces liver injury in *Opisthorchis viverrini*-infected and N-nitrosodimethylamine-treated hamsters. *J Pineal Res*. 2013;55(3):257–66.
 124. Wongsena W, Charoensuk L, Dangtakot R, Pinlaor P, Intuyod K, Pinlaor S. Melatonin suppresses eosinophils and Th17 cells in hamsters treated with a combination of human liver fluke infection and a chemical carcinogen. *Pharmacol Rep*. 2018;70(1):98–105.
 125. Han Y, Demorrow S, Invernizzi P, Jing Q, Glaser S, Renzi A, Meng F, Venter J, Bernuzzi F, White M, Francis H, Lleo A, Marziani M, Onori P, Alvaro D, Torzilli G, Gaudio E, Alpini G. Melatonin exerts by an autocrine loop antiproliferative effects in cholangiocarcinoma: Its synthesis is reduced favoring cholangiocarcinoma growth. *Am J Physiol Gastrointest Liver Physiol*. 2011;301(4):G623–33.
 126. Kubatka P, Zubor P, Busselberg D, Kwon TK, Adamek M, Petrovic D, Opatrilova R, Gazdikova K, Caprnda M, Rodrigo L, Danko J, Kruzliak P. Melatonin and breast cancer: Evidences from preclinical and human studies. *Crit Rev Oncol Hematol*. 2018;122:133–43.
 127. Dun A, Zhao X, Jin X, Wei T, Gao X, Wang Y, Hou H. Association between night-shift work and cancer risk: Updated systematic review and meta-analysis. *Front Oncol*. 2020;10:1006.
 128. Zhang Y, Papantoniou K. Night shift work and its carcinogenicity. *Lancet Oncol*. 2019;20(10):e550.
 129. Shiani A, Narayanan S, Pena L, Friedman M. The role of diagnosis and treatment of underlying liver disease for the prognosis of primary liver cancer. *Cancer Control*. 2017;24(3):1073274817729240.
 130. Gonciarz M, Gonciarz Z, Bielanski W, Mularczyk A, Konturek PC, Brzozowski T, Konturek SJ. The effects of long-term melatonin treatment on plasma liver enzymes levels and plasma concentrations of lipids and melatonin in patients with nonalcoholic steatohepatitis: A pilot study. *J Physiol Pharmacol*. 2012;63(1):35–40.
 131. Chojnacki C, Blonska A, Chojnacki J. The effects of melatonin on elevated liver enzymes during statin treatment. *Biomed Res Int*. 2017;2017:3204504.
 132. Nickkholgh A, Schneider H, Sobirey M, Venetz WP, Hinz U, Pelzl le H, Gotthardt DN, Cekauskas A, Manikas M, Mikalauskas S, Mikalauskene L, Bruns H, Zorn M, Weigand MA, Buchler MW, Schemmer P. The use of high-dose melatonin in liver resection is safe: First clinical experience. *J Pineal Res*. 2011;50(4):381–8.
 133. Yan JJ, Shen F, Wang K, Wu MC. Patients with advanced primary hepatocellular carcinoma treated by melatonin and transcatheter arterial chemoembolization: A prospective study. *Hepatobiliary Pancreat Dis Int*. 2002;1(2):183–6.
 134. Lissoni P, Barni S, Tancini G, Ardizzoia A, Rovelli F, Cazzaniga M, Brivio F, Piperno A, Aldeghi R, Fossati D, Characiejus D. Immunotherapy with subcutaneous low-dose interleukin-2 and the pineal indole melatonin as a new effective therapy in advanced cancers of the digestive tract. *Br J Cancer*. 1993;67(6):1404–7.
 135. Katsilabros L. Effects of instillation of paraffins in tissues. *Lancet*. 1973;1(7817):1452.
 136. Carbajo-Pescador S, Ordóñez R, Benet M, Jover R, Garcia-Palomo A, Mauriz JL, Gonzalez-Gallego J. Inhibition of VEGF expression through blockade of Hif1alpha and STAT3 signalling mediates the anti-angiogenic effect of melatonin in HepG2 liver cancer cells. *Br J Cancer*. 2013;109(1):83–91.
 137. Mazzoccoli G, Miele L, Marrone G, Mazza T, Vinciguerra M, Grieco A. A role for the biological clock in liver cancer. *Cancers*. 2019;11(11):1778.
 138. Wilkinson MJ, Manoogian ENC, Zadorian A, Lo H, Fakhour S, Shoghi A, Wang X, Fleischer JG, Navlakha S, Panda S, Taub PR. Ten-hour time-restricted eating reduces weight, blood pressure, and atherogenic lipids in patients with metabolic syndrome. *Cell Metab*. 2020;31(1):92–104.e105.
 139. Caussanel JP, Levi F, Brienza S, Misset JL, Itzhaki M, Adam R, Milano G, Hecquet B, Mathe G. Phase I trial of 5-day continuous venous infusion of oxaliplatin at circadian rhythm-modulated rate compared with constant rate. *J Natl Cancer Inst*. 1990;82(12):1046–50.
 140. Tavartkiladze L, Tavartkiladze A, Sordia T, Gvajaia A. Chronotherapeutic regimen with liposomal cisplatin for systemic treatment of primary liver cancer. *J Clin Oncol*. 2019;37(Suppl 15):e15678.
 141. Sancar A, Van Gelder RN. Clocks, cancer, and chronochemotherapy. *Science*. 2021;371(6524):eabb0738.

