



Identification of novel *BRCA1* large genomic rearrangements by a computational algorithm of amplicon-based Next-Generation Sequencing data

Arianna Nicolussi¹, Francesca Belardinilli², Valentina Silvestri², Yasaman Mahdavian², Virginia Valentini², Sonia D'Inzeo³, Marialaura Petroni⁴, Massimo Zani², Sergio Ferraro², Stefano Di Giulio², Francesca Fabretti², Beatrice Fratini¹, Angela Gradilone², Laura Ottini², Giuseppe Giannini^{2,5}, Anna Coppa¹ and Carlo Capalbo²

¹ Department of Experimental Medicine, University of Roma "La Sapienza", Roma, Italy

² Department of Molecular Medicine, University of Roma "La Sapienza", Roma, Italy

³ U.O.C. Microbiology and Virology Laboratory, A.O. San Camillo Forlanini, Roma, Italy

⁴ Istituto Italiano di Tecnologia, Center for Life Nano Science @ Sapienza, Roma, Italy

⁵ Istituto Pasteur-Fondazione Cenci Bolognetti, Roma, Italy

ABSTRACT

Background. Genetic testing for *BRCA1/2* germline mutations in hereditary breast/ovarian cancer patients requires screening for single nucleotide variants, small insertions/deletions and large genomic rearrangements (LGRs). These studies have long been run by Sanger sequencing and multiplex ligation-dependent probe amplification (MLPA). The recent introduction of next-generation sequencing (NGS) platforms dramatically improved the speed and the efficiency of DNA testing for nucleotide variants, while the possibility to correctly detect LGRs by this mean is still debated. The purpose of this study was to establish whether and to which extent the development of an analytical algorithm could help us translating NGS sequencing via an Ion Torrent PGM platform into a tool suitable to identify LGRs in hereditary breast-ovarian cancer patients.

Methods. We first used NGS data of a group of three patients (training set), previously screened in our laboratory by conventional methods, to develop an algorithm for the calculation of the dosage quotient (DQ) to be compared with the Ion Reporter (IR) analysis. Then, we tested the optimized pipeline with a consecutive cohort of 85 uncharacterized probands (validation set) also subjected to MLPA analysis. Characterization of the breakpoints of three novel *BRCA1* LGRs was obtained via long-range PCR and direct sequencing of the DNA products.

Results. In our cohort, the newly defined DQ-based algorithm detected 3/3 *BRCA1* LGRs, demonstrating 100% sensitivity and 100% negative predictive value (NPV) (95% CI [87.6–99.9]) compared to 2/3 cases detected by IR (66.7% sensitivity and 98.2% NPV (95% CI [85.6–99.9])). Interestingly, DQ and IR shared 12 positive results, but exons deletion calls matched only in five cases, two of which confirmed by MLPA. The

Submitted 29 August 2019
Accepted 1 October 2019
Published 15 November 2019

Corresponding authors
Giuseppe Giannini,
giuseppe.giannini@uniroma1.it
Anna Coppa,
anna.coppa@uniroma1.it

Academic editor
D. Gareth Evans

Additional Information and
Declarations can be found on
page 15

DOI 10.7717/peerj.7972

© Copyright
2019 Nicolussi et al.

Distributed under
Creative Commons CC-BY 4.0

OPEN ACCESS

breakpoints of the 3 novel *BRCA1* deletions, involving exons 16–17, 21–22 and 20, have been characterized.

Conclusions. Our study defined a DQ-based algorithm to identify *BRCA1* LGRs using NGS data. Whether confirmed on larger data sets, this tool could guide the selection of samples to be subjected to MLPA analysis, leading to significant savings in time and money.

Subjects Bioinformatics, Oncology

Keywords *BRCA1* LGRs, NGS, Deep coverage, Analytical validation, DQ analysis, MLPA

BACKGROUND

Hereditary breast and ovarian cancer syndrome, caused by germline pathogenic mutations in the *BRCA1* (MIM#113705) or *BRCA2* (MIM#600185) genes, is characterized by an increased risk for breast, ovarian, pancreatic and other cancers (*Palma et al., 2006*). It has been recently estimated that the cumulative risks of breast cancer to age 80 years was 72% for *BRCA1* and 69% for *BRCA2* carriers (*Kuchenbaecker et al., 2017*). Differences in mutation type and site may at least partially impact on cancer risk definition (*Rebbeck et al., 2015; Coppa et al., 2018; Rebbeck et al., 2018*). *BRCA1* and *BRCA2* gene mutations are typically found in 25–30% of the breast cancer families subjected to genetic testing (*Giannini et al., 2006; Economopoulou, Dimitriadis & Psyrris, 2015*). The relatively low rate of success in finding relevant pathogenic mutations in this settings is likely due to the contribution of other moderate-to-high penetrance breast cancer susceptibility genes (i.e., *PALB2, ATM, CHK2*) (*Economopoulou, Dimitriadis & Psyrris, 2015; Coppa et al., 2018*), or to the influence of low penetrance and risk-modifying alleles (*Couch et al., 2012; Ottini et al., 2013; Kuchenbaecker et al., 2014; Peterlongo et al., 2015*), all of which needs to be taken into account for a more appropriate assessment of individual cancer risk. For quite some time, the use of classical qualitative PCR-based techniques incapable of detecting large genomic rearrangements (LGRs) also contributed to failures in the identification of *BRCA* mutation carriers. Interestingly, the prevalence of *BRCA1/BRCA2* LGRs varies greatly among different populations ranging from 0 to 27% of mutation positive families in Iranian/French, Canadian, Dutch, Spanish, German, French and South Africa populations (*Gad et al., 2002; Hogervorst et al., 2003; Hartmann et al., 2004; Pietschmann et al., 2005; Moisan et al., 2006; La Hoya de et al., 2006; Sluiter & Van Rensburg, 2011*). Relevant differences in the frequency of *BRCA1* LGRs have also been reported within the Italian population (*Montagna et al., 2003; Buffone et al., 2007*). In general, *BRCA2* LGRs are less frequent (*Woodward et al., 2005; Agata et al., 2005; Buffone et al., 2007*), probably due to the lower density of Alu sequences compared to *BRCA1*, which are involved in the genesis of LGRs (*Smith et al., 1996*). Multiplex ligation-dependent probe amplification (MLPA) is the most commonly used technique for the detection of large deletions/duplications in *BRCA1/2* genes.

The recent advances in sequencing technologies have increased the speed and efficiency of DNA testing and the emergence of benchtop next-generation sequencing (NGS) instruments are becoming the standard in molecular genetic diagnosis

(Feliubadalo *et al.*, 2013; Trujillano *et al.*, 2015). NGS is capable of sensitive detection of sequence variants, but may also be used for detection of LGRs by the evaluation of Copy Number Variations (CNVs) (Tarabeux *et al.*, 2014; Enyedi *et al.*, 2016; Schenkel *et al.*, 2016; Schmidt *et al.*, 2017). The CNVs assessment is mainly performed using the sequencing read depth (RD) assessment approach, whose assumption is that the RD signal is proportional to the number of copies of chromosomal segments present in that specimen (Tan *et al.*, 2014). The ability to detect CNVs from NGS multigene panel largely, but not uniquely, depends on the library preparation, and target enrichment approaches based on hybridization and capture seem to have better performances compared to amplicon-based methods. In general, NGS data are not routinely used for CNVs detection in clinical settings for BRCA mutation screenings, due to concerns related to library preparation protocols, normalization procedures and employed software (Feliubadalo *et al.*, 2013; Wallace, 2016). Recently, we adopted the NGS Ion AmpliSeq™ BRCA1 and BRCA2 Panel to perform routine BRCA1/2 mutation screening on the Ion PGM platform (Nicolussi *et al.*, 2019). Here, we aimed at establishing whether sequencing data generated by this approach could be processed by a computational algorithm to efficiently predict the presence of LGRs, based on the dosage quotient (DQ) calculation and the Ion Reporter (IR) analysis.

METHODS

Patients and DNA

Families putatively affected by hereditary breast/ovarian cancer syndrome were recruited at the Hereditary Tumors section of Policlinico Umberto I, University La Sapienza, between July 2015 and September 2017 and selected as previously described (Capalbo *et al.*, 2006b; Capalbo *et al.*, 2006a; Coppa *et al.*, 2014). Comprehensive pre-test counseling was offered to all probands and their family members and informed consent was obtained. For each study participant, samples of blood or DNA from peripheral blood leukocytes were collected. DNA from blood samples was extracted and quantified as described by Nicolussi *et al.* (2019). All investigations were approved by Ethics Committee of the University of Roma “La Sapienza” (Prot.: 88/18; RIF.CE:4903, 31-01-2018) and conducted according to the principles outlined in the declaration of Helsinki.

A retrospective group of 3 DNA samples, previously found positive for BRCA1 LGRs by MLPA was used as a training set (TS). LGRs in the TS were as follows: sample BR59, BRCA1 exon 23–24 deletion (c.5407-?(1_?)del); sample BR328, BRCA1 exon 18-19 deletion (c.5075-?_5193+?del)(Buffone *et al.*, 2007) and sample BR409, NBR2 exon1 and BRCA1 exon 1-2 deletion (NBR2del EX1_BRCA1 delEX1-2) (Coppa *et al.*, 2018) (Table 1).

For NGS-based LGR analysis, a consecutive group of 127 NGS/MPLA negative samples have been used to create a baseline and a prospective consecutive cohort of 85 uncharacterized probands, validation set (VS), was studied.

Ion torrent PGM sequencing

The target regions in the BRCA1 and BRCA2 genes were amplified using the Ion AmpliSeq™ BRCA1 and BRCA2 Panel (Life Technologies) according to the manufacturers’

Table 1 LGRs in TS and VS.

	Sample Id	Genomic variant	Exon deletion	Ref
TS	BR59	c.5407-?(1?)del	exon 23-24 del	<i>Buffone et al. (2007)</i>
	BR328	c.5075-?_5193+?del	exon 18-19 del	<i>Buffone et al. (2007)</i>
	BR409	NBR2delEX1_BRCA1delEX1-2	exon 1 NBR2 del exon 1-2 BRCA1 del	<i>Coppa et al. (2018)</i>
VS	BR963	NG_005905.2: g.163181_169408del6228	exon 21-22 del	/
	BR1154	NG_005905.2: g.160396_164568del4173	exon 20 del	/
	BR1379	NG_005905.2:g.145185_151339del6155	exon 16-17 del	/

procedures and processed as previously described (*Belardinilli et al., 2015; Nicolussi et al., 2019*).

Sanger sequencing

All clinical samples were sequenced for the entire coding regions by Sanger sequencing, using an ABI PRISM DyeDeoxy Terminator Cycle Sequencing Kit and an ABI 3100 Genetic Analyzer (Applied Biosystems, Warrington, UK). Reference sequence for *BRCA1* was Genbank, [NM_007294.3](#), and reference sequence for *BRCA2* was Genebank, [NM_000059.3](#).

MLPA analyses

MLPA methodology (*Schouten et al., 2002*) was performed, according to the manufacturer's instructions (MRC–Holland, Amsterdam, the Netherlands), to identify *BRCA1/2* genomic rearrangements. For the statistical analysis we transferred the size and the peak areas of each sample to an Excel file. The peak areas of the expected MLPA products were evaluated by comparison with a normal control and by cumulative comparison of all samples within the same experiment (*Buffone et al., 2007; Coppa et al., 2018*).

NGS-based LGRs analysis

LGRs in *BRCA1* gene were studied by two distinct approaches: the manual calculation of the DQ and the IR platform. In the manual approach, DQ for each sample was calculated as follows: amplicon read count normalized on the *BRCA1* and *BRCA2* total reads/average of normalized amplicon read counts obtained from all samples. Specifically, we referred to DQA when amplicon counts were normalized vs. the coverage data of all samples run on the same single chip, and to DQB when amplicon counts were normalized vs. coverage data obtained from a baseline built from 127 LGRs negative samples. In addition, DQB has been alternatively obtained either considering together all amplicons of the Ion AmpliSeq™ *BRCA1* and *BRCA2* Panel (DQB1) or by separately considering the three different pools of amplicons (DQB2). DQ value higher than mean plus two standard deviations (SD) was considered indicative of a duplication; DQ value lower than mean minus 2 SD was considered indicative of a deletion. Particular attention has been also paid to reduction of multiple consecutive amplicons, even when they failed to trespass the above defined thresholds.

In the IR approach, we create a user-defined CNV detection workflow by a tunable Ion Reporter™ Software algorithm based on Hidden Markov Model (HMM), that utilize

normalized read coverage across amplicons to predict the copy number or ploidy (<https://assets.thermofisher.com/TFS-Assets/LSG/brochures/CNV-Detection-by-Ion.pdf>). The data coverage of 20 mutation-negative patients has been used as CNV baseline to analyze the samples of both TS and VS. We detected no *BRCA2* LGR in both the TS and VS. Thus, our analysis is necessarily limited to *BRCA1* LGRs.

DNA breakpoint analysis

Newly discovered *BRCA1* large deletions were validated by characterization of the genomic breakpoints. Long-range PCR was performed according to the manufacturer's instructions using the kit Platinum Taq DNA polymerases High Fidelity (Thermo Fisher) with the primers sitting on closer undeleted exons as described in [Table S2](#). PCR products were purified with ExoSAP-IT (USB Corp., Cleveland, USA) according to the manufacturer's instructions and sequenced using the ABI PRISM DyeDeoxy Terminator Cycle Sequencing Kit and an ABI 3100 Genetic Analyzer (Applied Biosystems, Warrington, UK). Reference sequences for *BRCA1* and *BRCA2* are in GenBank; [NM_007294.3](#) and [NM_000059.3](#), respectively.

Statistical analysis

Validation metrics were defined as: Accuracy = $(TP + TN)/(TP + FP + TN + FN)$; Sensitivity = $TP/(TP + FN)$; Specificity = $TN/(TN + FP)$; Negative Predictive Value = $TN/(TN + FN)$, where TP = true positives, TN = true negatives, FP = false positives, FN = false negatives. The confidence intervals (CIs) were calculated by the method of [Wilson \(1927\)](#).

RESULTS

NGS-dependent LGR analyses

To establish whether the data obtained by NGS via Ion AmpliSeq™ *BRCA1* and *BRCA2* Panel were suitable to identify copy number alterations in *BRCA1*, we used data from three samples (TS), already characterized in our laboratory for the presence of *BRCA1* LGRs by MLPA ([Table 1](#)). The sequencing data of the TS were analyzed by a locally devised algorithm for the calculation of the DQ and by our custom modified IR analysis, as described in materials and methods. The intrarun DQ calculation (DQA), which includes normalization based on the coverage data of the samples sequenced in the same chip, was always included to monitor the variability eventually due to different batches of reagents or to time-related variables. In general, however, we thought we could get improved resolution and reduced numbers of CNV false calls by normalizing the coverage data of all amplicons of each sample vs. those obtained from a reference set of 127 MLPA negative samples selected on the basis of their quality and uniformity of the coverage (DQB analysis). This baseline has been used to perform two DQB calculations, considering either all amplicons contained in the Ion AmpliSeq™ *BRCA1* and *BRCA2* Panel (DQB1) or dividing them into the three subsets identified by the amplification primer pools (DQB2).

As shown in [Fig. 1A](#), the DQA plot of the TS samples revealed the presence of peaks below the thresholds, in samples BR328 and BR409 (corresponding to deletions of *BRCA1*

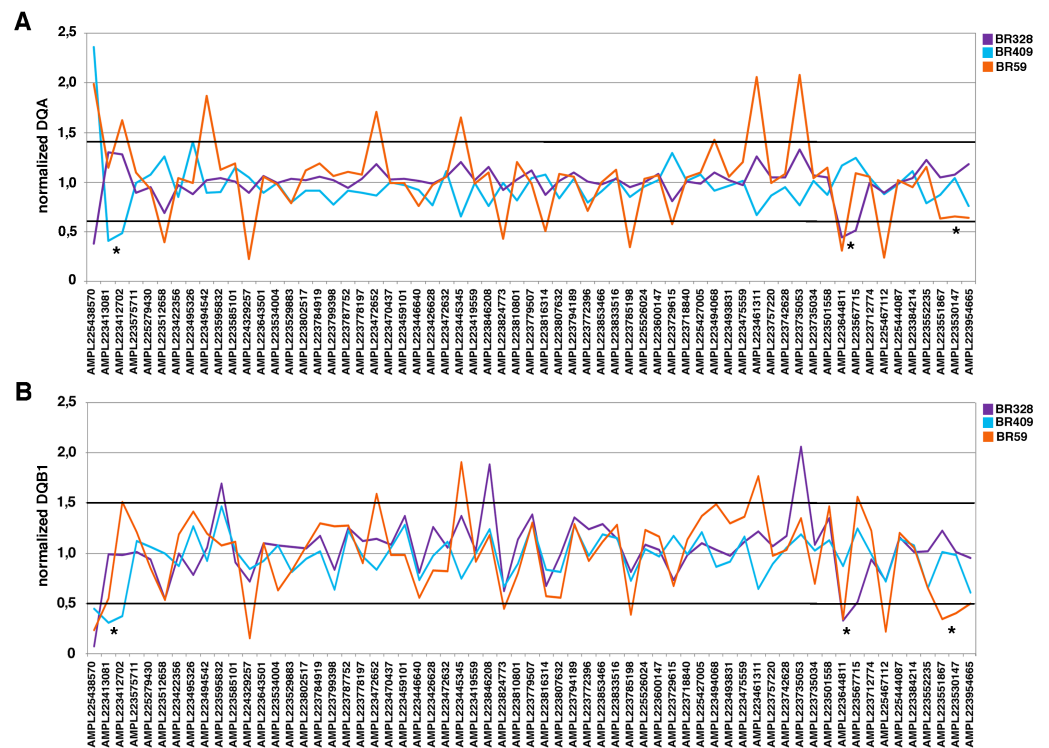


Figure 1 DQ analyses for TS samples. (A) For each sample, every peak represents the ratio of the amplicon read count normalized on *BRCA1/BRCA2* total reads and the average of normalized amplicon read counts from all samples on a single chip (DQA). (B) For each sample, every peak represents the ratio of the amplicon read count normalized on *BRCA1/BRCA2* total reads and the average of the coverage data of a baseline built from 127 LGRs negative samples (DQB1). The threshold = mean \pm 2 SD. Value $>$ mean \pm 2 SD is indicative of a duplication; Value $<$ mean \pm 2 SD is indicative of a deletion. * indicated the amplicons included in the region involved in the rearrangement as confirmed by MLPA analysis.

Full-size [DOI: 10.7717/peerj.7972/fig-1](https://doi.org/10.7717/peerj.7972/fig-1)

exons 18-19 and 1-2, respectively, in agreement with MLPA results). The DNA quality of BR59 sample was rather low, as evidenced by the many peaks out of the threshold. Nevertheless, the DQB1 analysis evidenced values below the threshold for 3 consecutive amplicons (AMPL22351867, 223530147 and 223954665), identifying *BRCA1* exon 23-24 deletion (Fig. 1B), already discovered by MLPA analysis. Although they fail to trespass the threshold, the same consecutive amplicons showed strongly reduced values also at DQA evaluation (Fig. 1A). Hence, the careful examination of the two DQ calculations allowed us to identify all three *BRCA1* LGRs in the TS. Also, the analysis performed by IR software detected the presence of CNV (CNV = 1) in the proper regions in all three TS samples (Table 2). On this basis, we extended DQA, DQB and IR analysis to a group of 85 consecutive samples (VS) negative for *BRCA1/2* pathogenic variants at NGS analysis and compared it with MLPA results. Overall, DQA and DQB analysis resulted in detection of positive calls in 33/85 (39%) samples, while IR analysis detected CNVs in 29/85 (34%) (Table 3). Interestingly, DQ and IR evaluation only shared 12 positive results, with exon calls being not coincident in seven of them and with a rather precise, although imperfect, indication of the exons involved in the remaining five (Table S1). MLPA confirmed *BRCA1*

LGRs in 3/85 samples (Fig. 2): BR963 and BR1379, belonging to the small group of five DQ/IR double positive samples, and BR1154 resulted DQ positive-IR negative. Therefore, DQ calculation resulted 100% sensitive and displayed a 100% NPV (95% CI [87.6–99.9]) (Table 3) in our VS, values not reached by IR analysis, which failed in the identification of BR1154 (Table 2). Within DQ analysis, the correct calls were more clearly defined by the DQB2 calculation (Figs. 3A–3C). The appropriateness of the deletions calls of DQ, IR and MLPA evaluations were confirmed by the molecular characterization of the breakpoints, as described below.

Characterization of LGRs

Identification of the breakpoints characterizing the LGRs is important for several reasons, including the possibility to develop diagnostic assays for segregation analyses in relatives. For different reasons DQ, IR and MLPA analyses are not able to provide such detailed molecular characterization of LGR. To define the breakpoints of the newly identified *BRCA1* LGRs, PCR amplification of genomic DNA from the three samples and direct sequencing were performed.

As shown in Fig. 4A, PCR amplification of genomic DNA from the BR963 patient resulted in an aberrant fragment of approximately 1,353 bp, whose direct sequencing confirmed loss of *BRCA1* exons 21 and 22, possibly originating from an erroneous homologous recombination process between an AluSq2 (Alu family, SINE class; chr17:41206762-41207066) and an AluSz (Alu family, SINE class; chr17:41200521-41200834) motifs. The rearrangement involved a perfectly repeated stretch of 24 bases and resulted in the deletion of 6228 nucleotides encompassing part of IVS20, exons 21–22 and IVS22 (Figs. 4B and 4C). The BR963 proband was affected with breast cancer at age 40 and belonged to HBC family. Segregation analysis demonstrated that the mutation came from the maternal lineage (Fig. 5A). PCR amplification of genomic DNA from BR1154 patient resulted in an aberrant fragment of approximately 872 bp (also present in her mother, sample BR1148), whose direct sequencing confirmed loss of *BRCA1* exons 20, possibly originating from an erroneous homologous recombination process between an AluY (Alu family, SINE class; chr17:41205398-41205698) and an AluY (Alu family, SINE class; chr17:41205398-41205698) motifs. The rearrangement involved a perfectly repeated stretch of 11 bases and resulted in the deletion of 4173 nucleotides encompassing part of IVS19, exon 20 and IVS20 (Figs. 4D–4F). The BR1154 proband was affected with ovarian cancer at age 52 and belonged to a HBOC family (Fig. 5B). The segregation analysis demonstrated that the mutation originating from the maternal lineage segregated in three individuals (Fig. 5B). Finally, PCR amplification of genomic DNA from BR1379 patient, resulted in an aberrant fragment of approximately 2,027 bp, whose direct sequencing confirmed loss of *BRCA1* exons 16 and 17, possibly originated from an erroneous homologous recombination process between an AluSp (Alu family, SINE class; chr17:41224585-41224884) and an AluSg (Alu family, SINE class; chr17:41218424-41218724) motif. The rearrangement involved a perfectly repeated stretch of 16 bases and resulted in the deletion of 6155 nucleotides encompassing part of IVS15, exons 16-17 and IVS17 (Figs. 4G–4I). The BR1379 proband

Table 2 CNVs prediction by IR software algorithm in TS and VS. The confidence score is the probability that the number of copies of the region of interest is different from 2, which is the normal value, while the precision score indicates how much the algorithm is certain of the accuracy of the number of copies estimated by the analysis.

	Sample ID	Locus	Type	Genes	Location	Length	Copy number	CytoBand	CNV confidence	CNV precision
TS	BR59	chr17:41197602	CNV	BRCA1	exon 23-24	2.138 kb	1	17q21.31 (41197602–41199740) × 1	5.66	5.66
	BR328	chr17:41215277	CNV	BRCA1	exon 18-19	749 kb	1	17q21.31 (41215277–41216026) × 1	13.05	13.05
	BR409	chr17:41275973	CNV	BRCA1	exon 2	275 kb	1	17q21.31 (41275973-41276248) × 1	1.14	1.14
VS	BR963	chr17:41201074	CNV	BRCA1	exon 21-22	2.18 kb	1	17q21.31 (41201074–41203254) × 1	9.14	9.14
	BR1379	chr17:41215855	CNV	BRCA1	exon 16-18	7.44kb	1	17q21.31 (41215855–41223295) × 1	5.11	5.11

Table 3 Performance of NGS-dependent LGRs analysis.

		Tot	MLPA		Results
			LGR	No LGR	
DQ	LGR	33	3	30	64.7% accuracy (95% CI [50.6–76.7]) 100% sensitivity (95% CI [22.8–98.4])
	No LGR	52	0	52	63.4% specificity (95% CI [49–75.8]) 100% NPV (95% CI [87.6–99.9])
IR	LGR	29	2	27	67.1% accuracy (95% CI [52.9–78.7]) 66.7% sensitivity (95% CI [8.9–98.8])
	No LGR	56	1	55	67.1% specificity (95% CI [52.7–78.9]) 98.2% NPV (95% CI [85.6–99.9])

Notes.

Validation metrics were defined as: Accuracy = $(TP + TN)/(TP + FP + TN + FN)$; Sensitivity = $TP/(TP + FN)$; Specificity = $TN/(TN + FP)$; Negative Predictive Value = $TN/(TN + FN)$, where TP, true positives; TN, true negatives; FP, false positives; FN, false negatives.

was affected with bilateral breast cancer at age 42 and 58 and belonged to a family with colon cancer and hepatomas cases (Fig. 5C).

In conclusion, our results in the VS allow us to propose an operative algorithm which uses DQ calculation and IR analysis to select samples to be subjected to MLPA analysis, as indicated in Fig. 6. Indeed, all DQ positive samples should be subjected to MLPA, while DQ and IR double positive samples, sharing calls in the same regions, could be directly subjected to second level confirmation assay or directly to breakpoint characterization. In principle, all DQ negative samples (52 sample out of 85 in our VS) could be considered negative for LGRs, thus completing the analysis at this step.

DISCUSSION

A complete clinical level analysis of *BRCA1* and *BRCA2* in hereditary breast/ovarian cancer includes the study of LGRs. Many methods have been used to identify LGRs, such as fluorescent *in-situ* hybridization (FISH) and microarrays (Xia et al., 2018), Southern blot, long-range PCR, quantitative multiplex PCR of short fragments (QMPSF) (Ewald et al., 2009), semiquantitative multiplex PCR, real-time PCR, restriction analysis and sequencing (Armour et al., 2002). All these methods are limited by their low throughput, time consuming, large amounts of high molecular weight DNA request and several false negative results (Ewald et al., 2009). More recently a multiplex PCR-based method that allows the determination of copy number status of multiple loci in a single assay, has been developed by Multiplicom (<http://www.multiplicom.com>) and described as a valid method (Concolino et al., 2014). However, the MLPA represents the most widely used approach to scan for LGRs in *BRCA1/2* genes (Ruiz de Garibay et al., 2012). The simultaneous detection of mutations and copy number alterations is an attractive and useful prospect for clinical settings. In the last years the NGS-based approaches for genetic testing offered a powerful alternative for *BRCA1/2* mutation detection. However, the specificity of this approach is still considered not completely satisfactory for a correct LGRs detection. One of the most relevant aspects concerns the library preparation method, with the amplicon-based

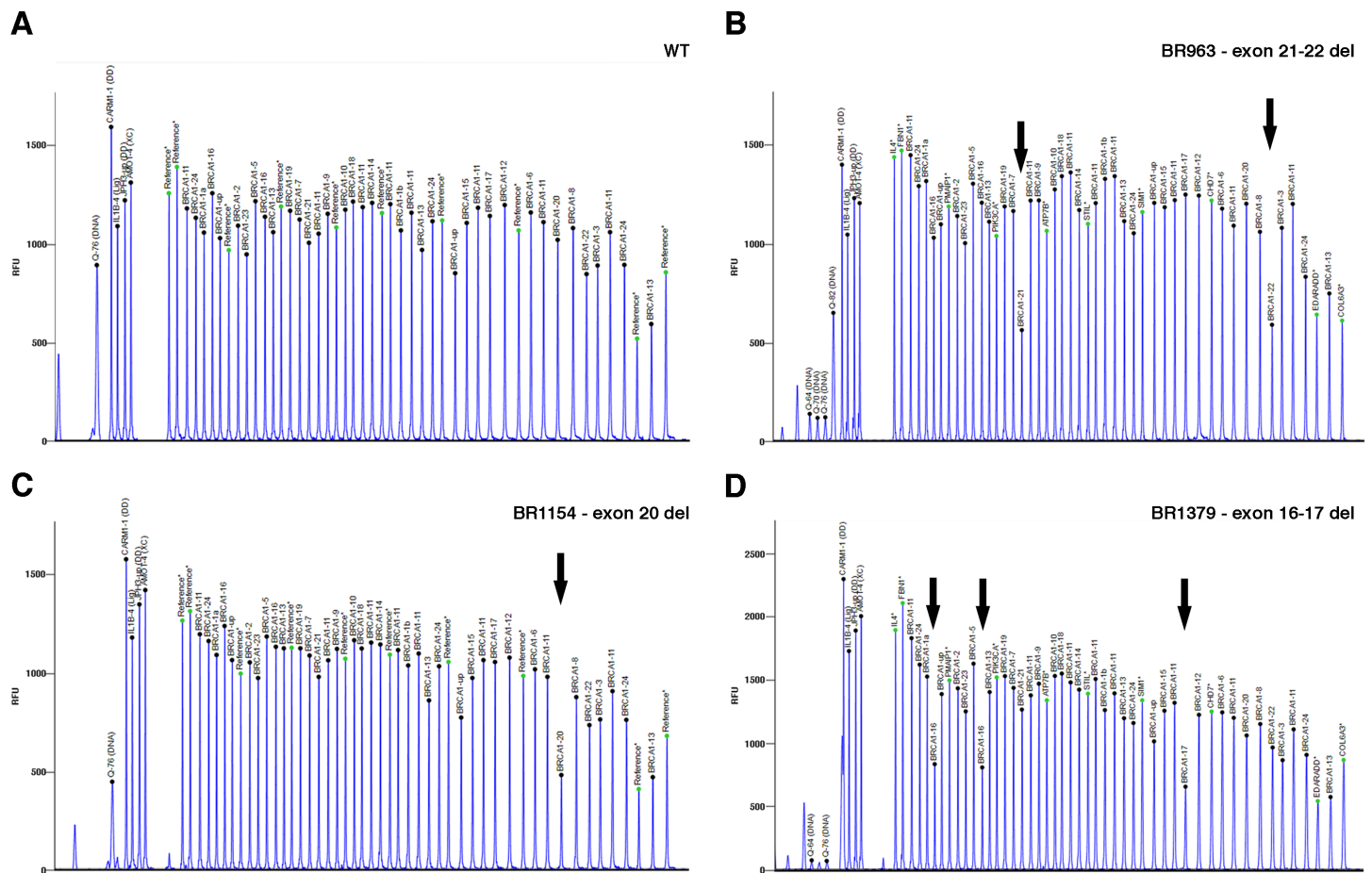


Figure 2 BRCA1 MLPA electropherogram showing aberrant profiles in BR963, BR1154, and BR1379 patients. (A) Wild-type sample (WT). Black arrows indicate the deletion of (B) *BRCA1* exons 21-22 (BR963), (C) *BRCA1* exon 20 (BR1154), (D) *BRCA1* exons 16-17 (BR1379).

Full-size [DOI: 10.7717/peerj.7972/fig-2](https://doi.org/10.7717/peerj.7972/fig-2)

approach having a lower specificity compared to target enrichment approaches (*Apressos et al., 2018*). Here we reported the definition of an operative algorithm to use amplicon-based Ion-PGM/Ampliseq *BRCA1/BRCA2* sequencing data to efficiently predict the occurrence of *BRCA1* LGRs. By comparison of the results obtained with DQ and IR analyses, we demonstrate that DQ had 100% sensitivity and 100% NPV, at variance with IR analysis, which failed in the identification of a *BRCA1* exon 20 deletion. This result is consistent with one known limitation of the IR software, able to detect CNVs only if the region of interest is covered by more than one amplicon (<https://assets.thermofisher.com/TFS-Assets/LSG/brochures/CNV-Detection-by-Ion.pdf>). Indeed, *BRCA1* exon 20, deleted in BR1154 sample, is covered by only one amplicon in the Ion AmpliSeq™ *BRCA1* and *BRCA2* Panel, making IR incapable of calling this CNV.

Of course, a major caveat deals with the limited specificity and accuracy of our approach, which could not overcome the limitations also reported by other groups (*Feliubadalo et al., 2013; Pilato et al., 2016*). Thus, although our operative algorithm cannot fully substitute for MLPA analysis, and if our data will be confirmed in larger data sets, we suggest that

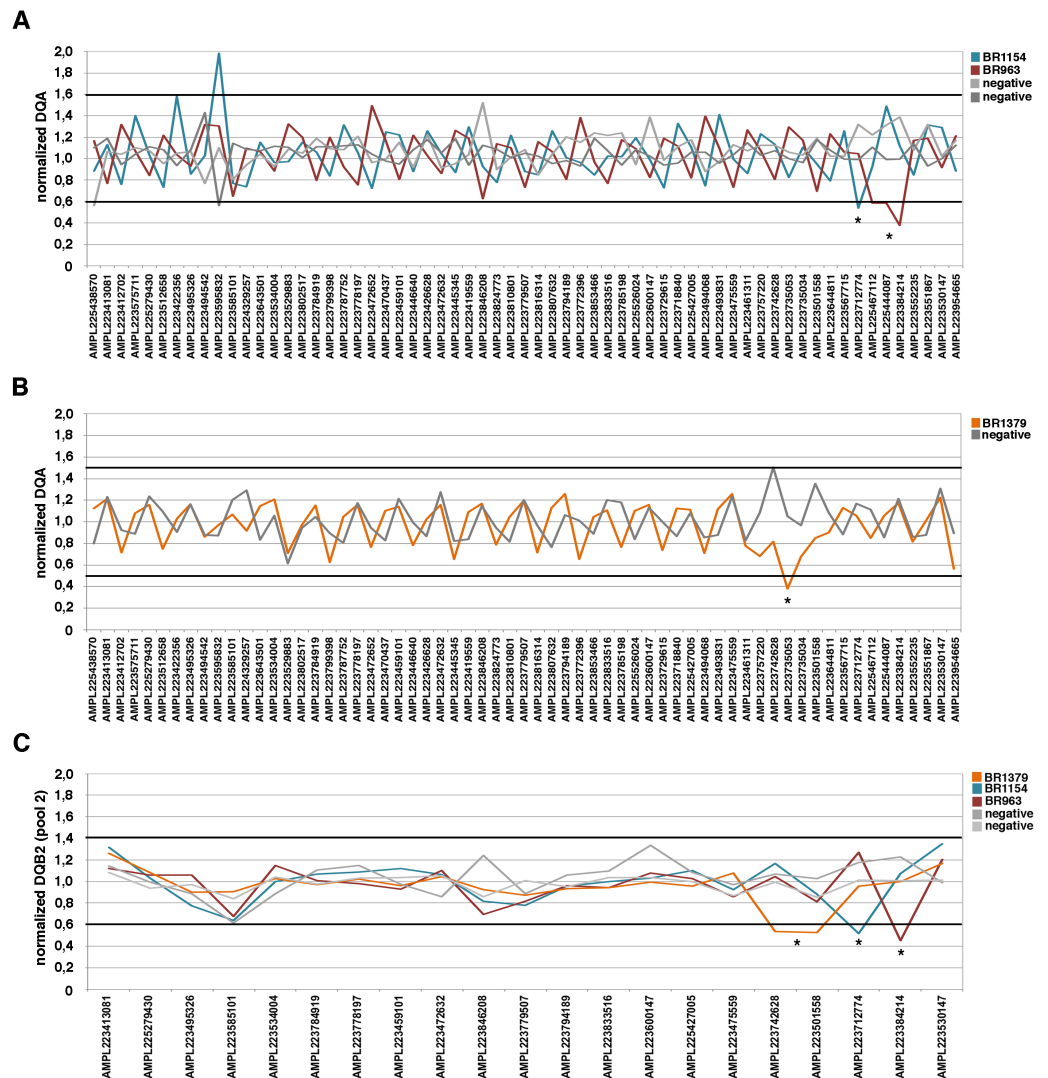


Figure 3 DQ analyses for the representative samples for VS. (A) and (B) for each sample, every peak represents the ratio of the amplicon read count normalized on *BRCA1/BRCA2* total reads and the average of normalized amplicon read counts from all samples on a single chip (DQA). (C) for each sample, every peak represents the ratio of the amplicon read count normalized on *BRCA1/BRCA2* total reads and the average of the coverage data of a baseline built from 127 LGRs negative samples considering separately the amplicon pools (DQB2, pool 2). The threshold = mean \pm 2 SD. Value > mean \pm 2 SD is indicative of a duplication; Value < mean \pm 2 SD is indicative of a deletion. * indicated the amplicons included in the region involved in the rearrangement as confirmed by MLPA analysis.

Full-size [DOI: 10.7717/peerj.7972/fig-3](https://doi.org/10.7717/peerj.7972/fig-3)

combined DQ and IR analyses could be used for selecting samples to be subjected to MLPA analysis following the flow chart depicted in Fig. 4, with significant savings in time and money.

Another important contribution of this paper is the molecular characterization of the three novel *BRCA1* rearrangements up to providing their unique breakpoint coordinates. Deletion of exons 21 and 22 causing damage to the C-terminal BRCT domain of the

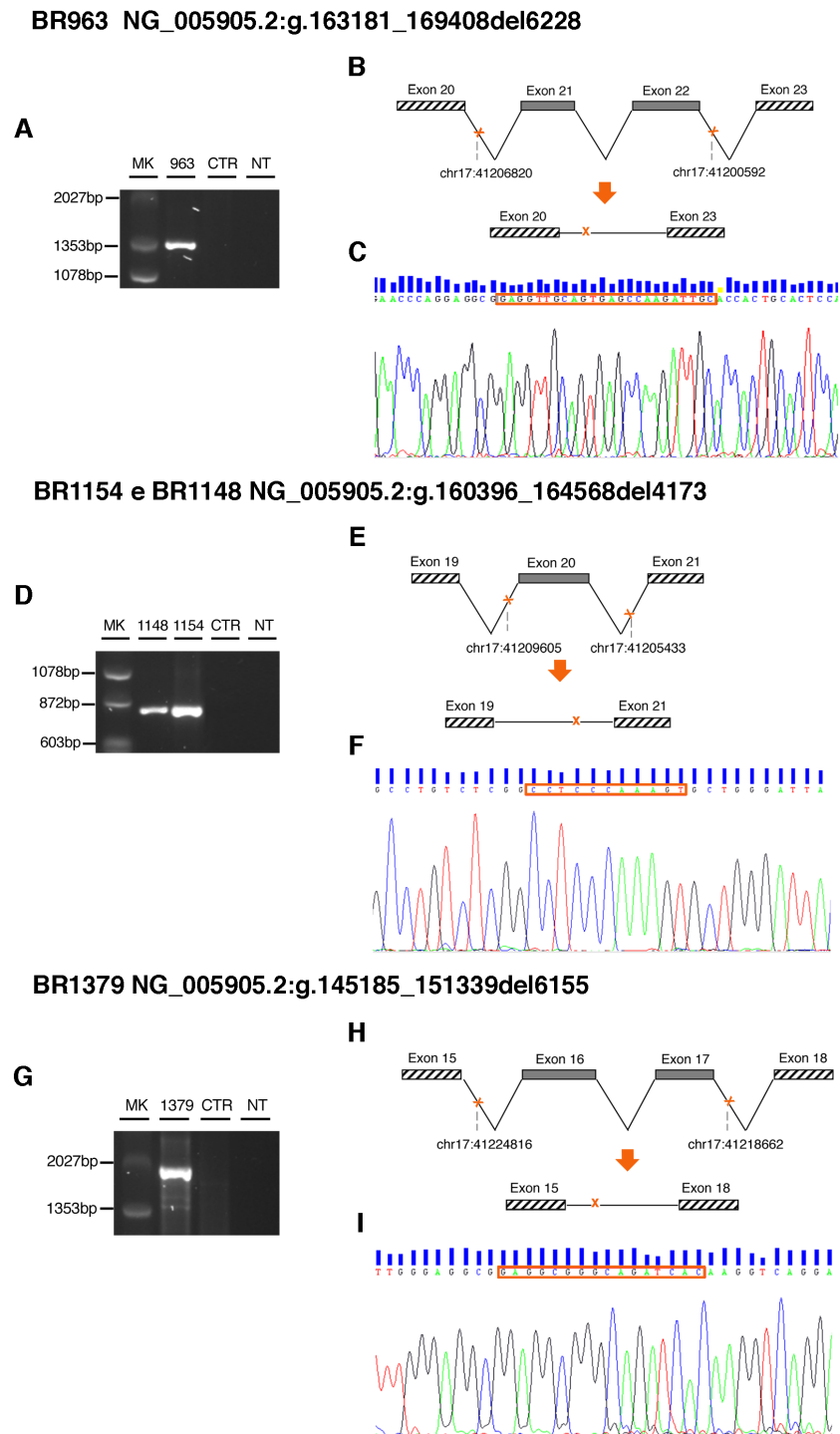


Figure 4 Characterization of *BRCA1* LGRs. (A) Gel image of PCR products. PCR amplification of the genomic region spanning the *BRCA1* rearrangement resulted in a fragment of approximately 1,353 bp present only in the proband BR963. (B) and (C) schematic representation and electropherogram showing the *BRCA1* exons 21 and 22 deletion. (continued on next page...)

Full-size DOI: 10.7717/peerj.7972/fig-4

Figure 4 (...continued)

The variant arose from an erroneous homologous recombination process between an AluSq2 (Alu family, SINE class; chr17:41206762-41207066) and an AluSz (Alu family, SINE class; chr17:41200521-41200834) motif, and it involved a perfectly repeated stretch of 24 bp. (D) Gel image of PCR products. PCR amplification of the genomic region spanning the *BRCA1* rearrangement resulted in a fragment of approximately 872 bp present in the proband BR1154 and in her mother BR1148. (E) and (F) schematic representation and electropherogram showing the *BRCA1* exon 20 deletion. The variant arose from an erroneous homologous recombination process between two AluY motif at chr17:41205398-41205698 and chr17:41205398-41205698, respectively, and it involved a perfectly repeated stretch of 11 bp. (G) Gel image of PCR products. PCR amplification of the genomic region spanning the *BRCA1* rearrangement resulted in a fragment of approximately 2027 bp present only in the proband BR1379. (H) and (I) schematic representation and electropherogram showing the *BRCA1* exons 16 and 17 deletion. The variant arose from an erroneous homologous recombination process between an AluSp motif (Alu family, SINE class; chr17:41224585-41224884) and an AluSg (Alu family, SINE class; chr17:41218424-41218724) motif, and it involved a perfectly repeated stretch of 16 bp. MK, marker; NT, no template; CTR healthy individual DNA.

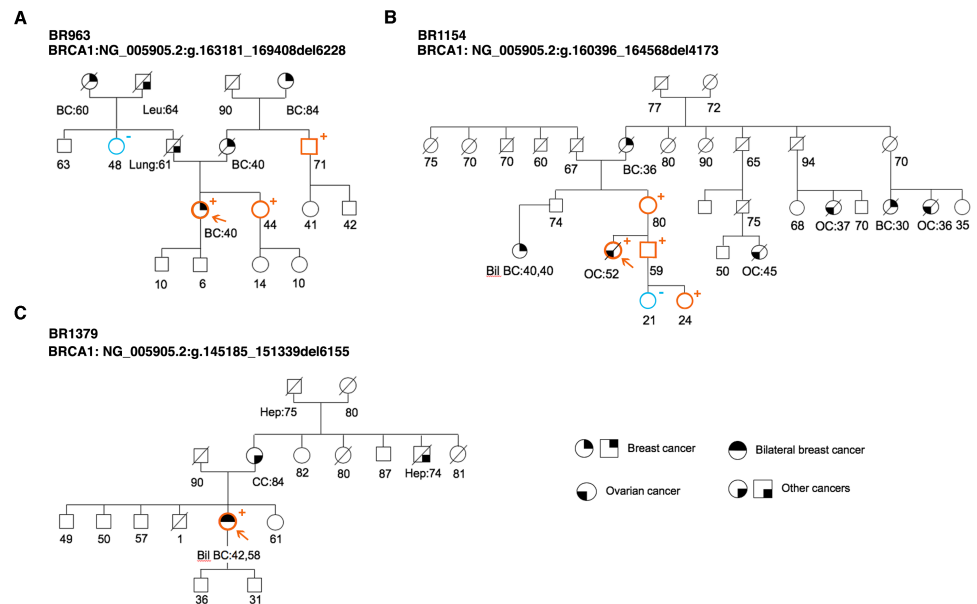


Figure 5 Pedigree of the HBC or HBOC family carriers of *BRCA1* novel LGRs. (A) Exons 21–22 deletion (BR963). (B) Exon 20 deletion (BR1154). (C) Exons 16–17 deletion (BR1379). Probands are indicated with an arrow. Cancer type and age at diagnosis are reported and described as: BC, breast cancer; Pan, pancreas; Leu, leukemia; Lung; bil BC, bilateral breast cancer; OC, ovarian cancer; Hep, hepatoma; CC, colon cancer.

Full-size DOI: 10.7717/peerj.7972/fig-5

BRCA1 protein has been reported and characterized in Czech (Vasickova et al., 2007; Ticha et al., 2010) and Malay population (Hasmad et al., 2015), but with different breakpoints. *BRCA1* exon 20 deletion has been described in Italian and Greek population (Montagna et al., 2003; Belogianni et al., 2004; Armaou et al., 2007) but all different from each other and from our own, with respect to their breakpoints. The *BRCA1* exons 16–17 deletion, responsible of *BRCA1* loss of function (Carvalho et al., 2009), has been reported in Latin America/Caribbean population, but the breakpoints were not provided by the authors (Judkins et al., 2012). Similar to many other cases (Mazoyer, 2005; Buffone et al., 2007;

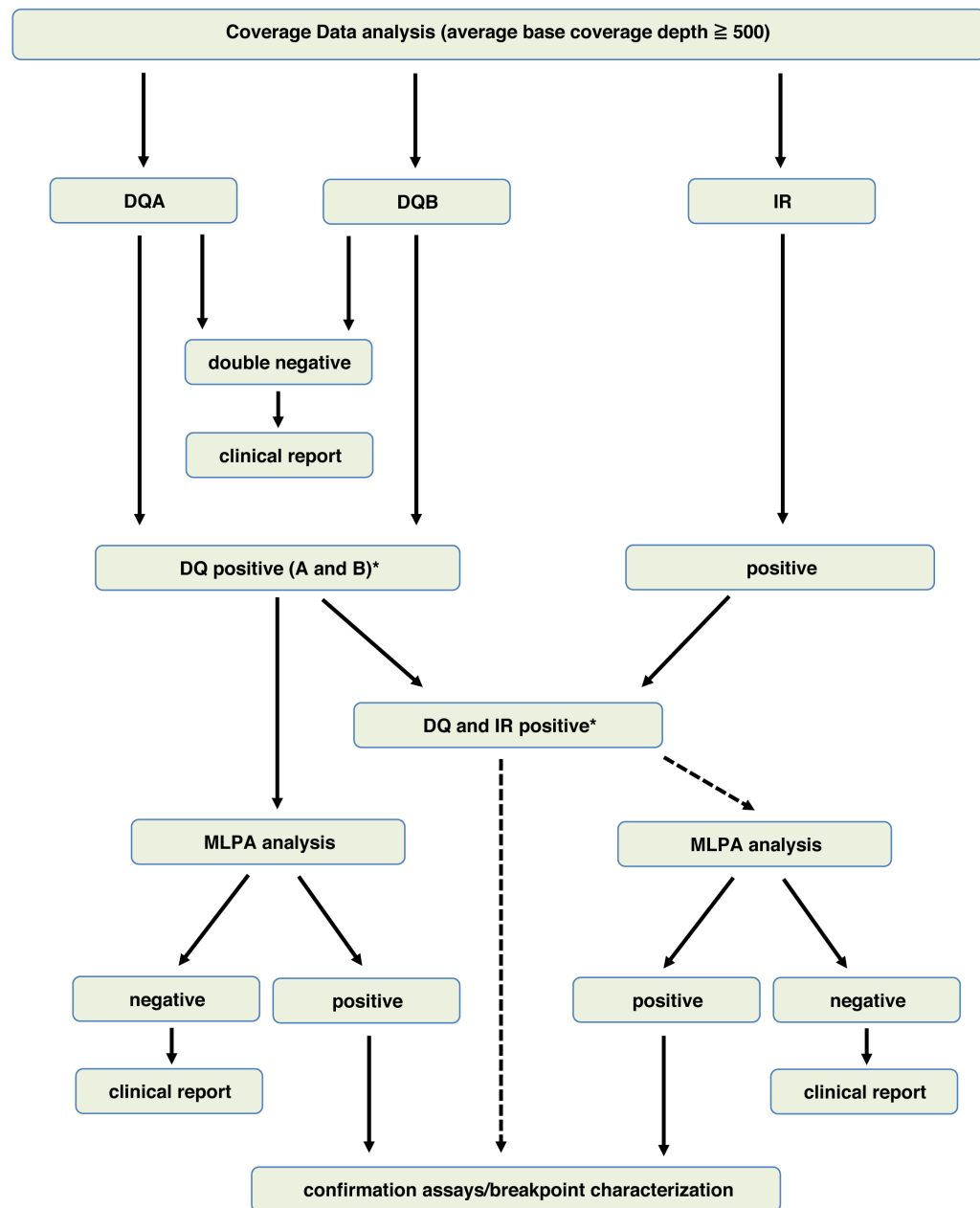


Figure 6 Operative algorithm to select samples for MLPA analysis.

Full-size  DOI: [10.7717/peerj.7972/fig-6](https://doi.org/10.7717/peerj.7972/fig-6)

Ewald et al., 2009), all three novel rearrangements described here, are likely to be due to an erroneous homologous recombination event between perfectly matching Alu repeats.

CONCLUSION

In conclusion, here we described a simple approach that require the use of a basic statistical package such as Microsoft Excel, to predict the occurrence of LGRs by the analysis of NGS data designed for Ion AmpliSeq™ BRCA1 and BRCA2 Panel/IT-PGM platform, applicable

to all NGS platforms in use to reduce the number of samples to be subjected to MLPA analysis. We also characterized for the first time the breakpoints of three novel *BRCA1* LGRs.

ACKNOWLEDGEMENTS

The authors would like to thank Dr. Alessandro Albiero for advice on data analysis.

ADDITIONAL INFORMATION AND DECLARATIONS

Funding

This work was supported by the Italian Ministry of Education, Universities and Research—Dipartimenti di Eccellenza—L. 232/2016; Associazione Italiana per la Ricerca sul Cancro (AIRC) grant IG17734, Italian Ministry of University and Research, PRIN projects, and Istituto Pasteur-Fondazione Cenci Bolognetti (to Giuseppe Giannini); Francesca Fabretti is the recipient of a fellowship of the PhD Programme in Tecnologie Biomediche in Medicina Clinica, University La Sapienza. The funders had no role in study design, data collection and analysis, decision to publish, or preparation of the manuscript.

Grant Disclosures

The following grant information was disclosed by the authors:

Italian Ministry of Education, Universities and Research—Dipartimenti di Eccellenza: L. 232/2016.

Associazione Italiana per la Ricerca sul Cancro (AIRC): IG17734.

Italian Ministry of University and Research.

PRIN projects.

Istituto Pasteur-Fondazione Cenci Bolognetti (to Giuseppe Giannini).

Tecnologie Biomediche in Medicina Clinica, University La Sapienza.

Competing Interests

The authors declare there are no competing interests.

Author Contributions

- Arianna Nicolussi conceived and designed the experiments, performed the experiments, analyzed the data, prepared figures and/or tables, authored or reviewed drafts of the paper, approved the final draft.
- Francesca Belardinilli, Yasaman Mahdavian, Virginia Valentini and Sonia D’Inzeo performed the experiments, prepared figures and/or tables, approved the final draft.
- Valentina Silvestri analyzed the data, contributed reagents/materials/analysis tools, authored or reviewed drafts of the paper, approved the final draft.
- Marialaura Petroni, Massimo Zani, Sergio Ferraro, Stefano Di Giulio and Francesca Fabretti performed the experiments, contributed reagents/materials/analysis tools, prepared figures and/or tables, approved the final draft.
- Beatrice Fratini, Angela Gradilone analyzed the data, contributed reagents/materials/analysis tools, prepared figures and/or tables, approved the final draft.

- Laura Ottini, Giuseppe Giannini conceived and designed the experiments, authored or reviewed drafts of the paper, approved the final draft.
- Anna Coppa and Carlo Capalbo conceived and designed the experiments, analyzed the data, authored or reviewed drafts of the paper, approved the final draft.

Human Ethics

The following information was supplied relating to ethical approvals (i.e., approving body and any reference numbers):

The Ethics Committee of the University of Roma “La Sapienza” approved this research (Prot.: 88/18; RIF.CE:4903, 31-01-2018).

DNA Deposition

The following information was supplied regarding the deposition of DNA sequences:

The following LGRs are available at ClinVar:

NG_005905.2:g.163181_169408del6228: ClinVar; Variation ID 598936;
NG_005905.2:g.145185_151339del6155: ClinVar; Variation ID 598935;
NG_005905.2:g.160396_164568del4173: ClinVar; Variation ID 598937

Data Availability

The following information was supplied regarding data availability:

The raw measurements are available in the [Supplemental Files](#).

Supplemental Information

Supplemental information for this article can be found online at <http://dx.doi.org/10.7717/peerj.7972#supplemental-information>.

REFERENCES

- Agata S, Dalla Palma M, Callegaro M, Scaini MC, Menin C, Ghiotto C, Nicoletto O, Zavagno G, Chieco-Bianchi L, D’Andrea E, Montagna M. 2005. Large genomic deletions inactivate the *BRCA2* gene in breast cancer families. *Journal of medical genetics* 42:e64 DOI 10.1136/jmg.2005.032789.
- Apeessos A, Agiannitopoulos K, Pepe G, Tsaousis GN, Papadopoulou E, Metaxa-Mariatou V, Tsirigoti A, Efstathiadou C, Markopoulos C, Xepapadakis G, Venizelos V, Tsiftoglou A, Natsiopoulos I, Nasioulas G. 2018. Comprehensive *BRCA* mutation analysis in the Greek population. Experience from a single clinical diagnostic center. *Cancer Genetics* 220:1–12 DOI 10.1016/j.cancergen.2017.10.002.
- Armaou S, Konstantopoulou I, Anagnostopoulos T, Razis E, Boukovinas I, Xenidis N, Fountzilias G, Yannoukakos D. 2007. Novel genomic rearrangements in the *BRCA1* gene detected in Greek breast/ovarian cancer patients. *European Journal of Cancer* 43:443–453 DOI 10.1016/j.ejca.2006.09.021.
- Armour JAL, Barton DE, Cockburn DJ, Taylor GR. 2002. The detection of large deletions or duplications in genomic DNA. *Human Mutation* 20:325–337 DOI 10.1002/humu.10133.

- Belardinilli F, Capalbo C, Buffone A, Petroni M, Colicchia V, Ferraro S, Zani M, Nicolussi A, D'Inzeo S, Coppa A, Screpanti I, Gulino A, Giannini G. 2015. Validation of the Ion Torrent PGM sequencing for the prospective routine molecular diagnostic of colorectal cancer. *Clinical Biochemistry* 48:908–910 DOI 10.1016/j.clinbiochem.2015.04.003.
- Belogianni I, Apessos A, Mihalatos M, Razi E, Labropoulos S, Petounis A, Gaki V, Keramopoulos A, Pandis N, Kyriacou K, Hadjisavvas A, Kosmidis P, Yannoukakos D, Nasioulas G. 2004. Characterization of a novel large deletion and single point mutations in the *BRCA1* gene in a Greek cohort of families with suspected hereditary breast cancer. *BMC Cancer* 4:61 DOI 10.1186/1471-2407-4-61.
- Buffone A, Capalbo C, Ricevuto E, Sidoni T, Ottini L, Falchetti M, Cortesi E, Marchetti P, Scambia G, Tomao S, Rinaldi C, Zani M, Ferraro S, Frati L, Screpanti I, Gulino A, Giannini G. 2007. Prevalence of *BRCA1* and *BRCA2* genomic rearrangements in a cohort of consecutive Italian breast and/or ovarian cancer families. *Breast Cancer Research and Treatment* 106:289–296 DOI 10.1007/s10549-007-9499-6.
- Capalbo C, Ricevuto E, Vestri A, Ristori E, Sidoni T, Buffone O, Adamo B, Cortesi E, Marchetti P, Scambia G, Tomao S, Rinaldi C, Zani M, Ferraro S, Frati L, Screpanti I, Gulino A, Giannini G. 2006a. *BRCA1* and *BRCA2* genetic testing in Italian breast and/or ovarian cancer families: mutation spectrum and prevalence and analysis of mutation prediction models. *Annals of Oncology: Official Journal of the European Society for Medical Oncology* 17(Suppl 7):vii34–vii40 DOI 10.1093/annonc/mdl947.
- Capalbo C, Ricevuto E, Vestri A, Sidoni T, Buffone A, Cortesi E, Marchetti P, Scambia G, Tomao S, Rinaldi C, Zani M, Ferraro S, Frati L, Screpanti I, Gulino A, Giannini G. 2006b. Improving the accuracy of *BRCA1/2* mutation prediction: validation of the novel country-customized IC software. *European Journal of Human Genetics* 14:49–54 DOI 10.1038/sj.ejhg.5201511.
- Carvalho M, Pino MA, Karchin R, Beddor J, Godinho-Netto M, Mesquita RD, Rodarte RS, Vaz DC, Monteiro VA, Manoukian S, Colombo M, Ripamonti CB, Rosenquist R, Suthers G, Borg A, Radice P, Grist SA, Monteiro ANA, Billack B. 2009. Analysis of a set of missense, frameshift, and in-frame deletion variants of *BRCA1*. *Mutation Research* 660:1–11 DOI 10.1016/j.mrfmmm.2008.09.017.
- Concolino P, Mello E, Minucci A, Santonocito C, Scambia G, Giardina B, Capoluongo E. 2014. Advanced tools for *BRCA1/2* mutational screening: comparison between two methods for large genomic rearrangements (LGRs) detection. *Clinical Chemistry and Laboratory Medicine* 52:1119–1127 DOI 10.1515/cclm-2013-1114.
- Coppa A, Buffone A, Capalbo C, Nicolussi A, D'Inzeo S, Belardinilli F, Colicchia V, Petroni M, Granato T, Midulla C, Zani M, Ferraro S, Screpanti I, Gulino A, Giannini G. 2014. Novel and recurrent *BRCA2* mutations in Italian breast/ovarian cancer families widen the ovarian cancer cluster region boundaries to exons 13 and 14. *Breast Cancer Research and Treatment* 148:629–635 DOI 10.1007/s10549-014-3196.
- Coppa A, Nicolussi A, D'Inzeo S, Capalbo C, Belardinilli F, Colicchia V, Petroni M, Zani M, Ferraro S, Rinaldi C, Buffone A, Bartolazzi A, Screpanti I, Ottini L, Giannini G. 2018. Optimizing the identification of risk-relevant mutations by

multigene panel testing in selected hereditary breast/ovarian cancer families. *Cancer Medicine* 7:46–55 DOI 10.1002/cam4.1251.

- Couch FJ, Antoniou AC, Ramus SJ, Kuchenbaecker KB, Soucy P, Beesley J, Chen X, Wang X, Kirchoff T, McGuffog L, Barrowdale D, Lee A, Healey S, Sinilnikova OM, Andrulis IL, for OCGN, Ozelik H, Mulligan AM, Thomassen M, Gerdes A-M, Skytte A-B, Kruse TA, Caligo MA, Wachenfeldt von A, Barbany-Bustinza G, Loman N, Soller M, Ehrencrona H, Karlsson P, for SWE-BRCA, Nathanson KL, Domchek SM, Jakubowska A, Lubinski J, Jaworska K, Durda K, Zlowocka E, Huzarski T, Byrski T, Gronwald J, Cybulski C, Górski B, Osorio A, Durán M, Tejada MI, Benítez J, Hamann U, for HEBON, Van Os TA, Van Leeuwen FE, Meijers-Heijboer HEJ, Wijnen J, Blok MJ, Kets M, Hooning MJ, Oldenburg RA, Peock S, Frost D, Ellis SD, Platte R, Fineberg E, Evans DG, Jacobs C, Eeles RA, Adlard J, Davidson R, Cole T, Cook J, Paterson J, Brewer C, Douglas F, Hodgson SV, Morrison PJ, Walker L, Porteous ME, Kennedy MJ, for EMBRACE, Bove B, Godwin AK, Stoppa-Lyonnet D, for GEMO Study Collaborators, Fassy-Colcombet M, Castera L, Cornelis F, Mazoyer S, Léoné M, Boutry-Kryza N, Bressac-de Paillerets B, Caron O, Pujol P, Coupier I, Delnatte C, Akloul L, Lynch HT, Snyder CL, Buys SS, Daly MB, Terry M, Chung WK, John EM, Miron A, Southey MC, Hopper JL, Goldgar DE, Singer CF, Tea M-KM, Fink-Retter A, Nielsen FC, Arason A, Shah S, Sarrel K, Robson ME, Piedmonte M, Phillips K, Basil J, Rubinstein WS, Boggess J, Wakeley K, Ewart-Toland A, Montagna M, Isaacs C, Lazaro C, Blanco I, Feliubadalo L, Brunet J, Gayther SA, Pharoah PPD, Odunsi KO, Karlan BY, Walsh CS, Olah E, Teo SH, Ganz PA, Beattie MS, Dorfling CM, Díez O, Kwong A, Schmutzler RK, Engel C, Meindl A, Ditsch N, Arnold N, Heidemann S, Niederacher D, Preisler-Adams S, Gadzicki D, Varon-Mateeva R, Deissler H, Gehrig A, Sutter C, Kast K, Fiebig B, Heinritz W, Caldés T, La Hoya de M, Muranen TA, Nevanlinna H, Tischkowitz MD, Spurdle AB, Neuhausen SL, Ding YC, Lindor NM, Fredericksen Z, Pankratz VS, Peterlongo P, Manoukian S, Peissel B, Zaffaroni D, Bernard L, Viel A, Giannini G, Varesco L, Radice P, Greene MH, Easton DF, Chenevix-Trench G, Offit K, Simard J, on behalf of the Consortium of Investigators of Modifiers of BRCA1/2. 2012. Common variants at the 19p131 and *ZNF365* loci are associated with ER subtypes of breast cancer and ovarian cancer risk in *BRCA1* and *BRCA2* mutation carriers. *Cancer Epidemiology, Biomarkers & Prevention* 21(4):645–657 DOI 10.1158/1055-9965.EPI-11-0888.
- Economopoulou P, Dimitriadis G, Psyrris A. 2015. Beyond *BRCA*: new hereditary breast cancer susceptibility genes. *Cancer Treatment Reviews* 41:1–8 DOI 10.1016/j.ctrv.2014.10.008.
- Enyedi MZ, Jaksa G, Pintér L, Sükösd F, Gyuris Z, Hajdu A, Határvolgyi E, Priskin K, Haracska L. 2016. Simultaneous detection of *BRCA* mutations and large genomic rearrangements in germline DNA and FFPE tumor samples. *Oncotarget* 7(38):61845–61859 DOI 10.18632/oncotarget.11259.

- Ewald IP, Ribeiro PLI, Palmero EI, Cossio SL, Giugliani R, Ashton-Prolla P. 2009. Genomic rearrangements in *BRCA1* and *BRCA2*: a literature review. *Genetics and Molecular Biology* 32:437–446 DOI 10.1590/S1415-47572009005000049.
- Feliubadalo L, Lopez-Doriga A, Castellsagué E, Del Valle J, Menéndez M, Tornero E, Montes E, Cuesta R, Gómez C, Campos O, Pineda M, González S, Moreno V, Brunet J, Blanco I, Serra E, Capellá G, Lazaro C. 2013. Next-generation sequencing meets genetic diagnostics: development of a comprehensive workflow for the analysis of *BRCA1* and *BRCA2* genes. *European Journal of Human Genetics* 21:864–870 DOI 10.1038/ejhg.2012.270.
- Gad S, Caux-Moncoutier V, Pages-Berhouet S, Gauthier-Villars M, Coupier I, Pujol P, Frenay M, Gilbert B, Maugard C, Bignon Y-J, Chevrier A, Rossi A, Fricker J-P, Nguyen TD, Demange L, Aurias A, Bensimon A, Stoppa-Lyonnet D. 2002. Significant contribution of large *BRCA1* gene rearrangements in 120 French breast and ovarian cancer families. *Oncogene* 21:6841–6847 DOI 10.1038/sj.onc.1205685.
- Giannini G, Capalbo C, Ristori E, Ricevuto E, Sidoni T, Buffone A, Cortesi E, Marchetti P, Scambia G, Tomao S, Rinaldi C, Zani M, Ferraro S, Frati L, Screpanti I, Gulino A. 2006. Novel *BRCA1* and *BRCA2* germline mutations and assessment of mutation spectrum and prevalence in Italian breast and/or ovarian cancer families. *Breast Cancer Research and Treatment* 100:83–91 DOI 10.1007/s10549-006-9225-9.
- Hartmann C, John AL, Klaes R, Hofmann W, Bielen R, Koehler R, Janssen B, Bartram CR, Arnold N, Zschocke J. 2004. Large *BRCA1* gene deletions are found in 3% of German high-risk breast cancer families. *Human Mutation* 24:534 DOI 10.1002/humu.9291.
- Hasmad HN, Sivanandan K, Lee V, Yip CH, Mohd Taib NA, Teo SH. 2015. Identification of a recurrent *BRCA1* exon 21-22 genomic rearrangement in Malay breast cancer patients. *Clinical Genetics* 87:392–394 DOI 10.1111/cge.12451.
- Hogervorst FBL, Nederlof PM, Gille JJP, McElgunn CJ, Grippeling M, Pruntel R, Regnerus R, Van Welsem T, Van Spaendonk R, Menko FH, Kluijt I, Dommering C, Verhoef S, Schouten JP, Van't Veer LJ, Pals G. 2003. Large genomic deletions and duplications in the *BRCA1* gene identified by a novel quantitative method. *Cancer Research* 63:1449–1453.
- Judkins T, Rosenthal E, Arnell C, Burbidge LA, Geary W, Barrus T, Schoenberger J, Trost J, Wenstrup RJ, Roa BB. 2012. Clinical significance of large rearrangements in *BRCA1* and *BRCA2*. *Cancer* 118:5210–5216 DOI 10.1002/ncr.27556.
- Kuchenbaecker KB, Hopper JL, Barnes DR, Phillips K-A, Mooij TM, Roos-Blom M-J, Jervis S, Van Leeuwen FE, Milne RL, Andrieu N, Goldgar DE, Terry MB, Rookus MA, Easton DF, Antoniou AC, BRCA1 and BRCA2 Cohort Consortium, McGuffog L, Evans DG, Barrowdale D, Frost D, Adlard J, Ong K-R, Izatt L, Tischkowitz M, Eeles R, Davidson R, Hodgson S, Ellis S, Nogues C, Lasset C, Stoppa-Lyonnet D, Fricker J-P, Faivre L, Berthet P, Hooning MJ, Van der Kolk LE, Kets CM, Adank MA, John EM, Chung WK, Andrulis IL, Southey M, Daly MB, Buys SS, Osorio A, Engel C, Kast K, Schmutzler RK, Caldés T, Jakubowska A, Simard J, Friedlander ML, McLachlan S-A, Machackova E, Foretova L, Tan YY, Singer CF, Olah E, Gerdes

A-M, Arver B, Olsson H. 2017. Risks of breast, ovarian, and contralateral breast cancer for *BRCA1* and *BRCA2* mutation carriers. *The Journal of the American Medical Association* 317:2402–2416 DOI [10.1001/jama.2017.7112](https://doi.org/10.1001/jama.2017.7112).

Kuchenbaecker KB, Neuhausen SL, Robson M, Barrowdale D, McGuffog L, Mulligan AM, Andrulis IL, Spurdle AB, Schmidt MK, Schmutzler RK, Engel C, Wappenschmidt B, Nevanlinna H, Thomassen M, Southey M, Radice P, Ramus SJ, Domchek SM, Nathanson KL, Lee A, Healey S, Nussbaum RL, Rebbeck TR, Arun BK, James P, Karlan BY, Lester J, Cass I, Breast Cancer Family Registry, Terry MB, Daly MB, Goldgar DE, Buys SS, Janavicius R, Tihomirova L, Tung N, Dorfling CM, Van Rensburg EJ, Steele L, O Hansen von T, Ejlertsen B, Gerdes A-M, Nielsen FC, Dennis J, Cunningham J, Hart S, Slager S, Osorio A, Benítez J, Durán M, Weitzel JN, Tafur I, Hander M, Peterlongo P, Manoukian S, Peissel B, Roversi G, Scuvera G, Bonanni B, Mariani P, Volorio S, Dolcetti R, Varesco L, Papi L, Tibiletti MG, Giannini G, Fostira F, Konstantopoulou I, Garber J, Hamann U, Donaldson A, Brewer C, Foo C, Evans DG, Frost D, Eccles D, EMBRACE Study, Douglas F, Brady A, Cook J, Tischkowitz M, Adlard J, Barwell J, Ong K-R, Walker L, Izatt L, Side LE, Kennedy MJ, Rogers MT, Porteous ME, Morrison PJ, Platte R, Eeles R, Davidson R, Hodgson S, Ellis S, Godwin AK, Rhiem K, Meindl A, Ditsch N, Arnold N, Plendl H, Niederacher D, Sutter C, Steinemann D, Bogdanova-Markov N, Kast K, Varon-Mateeva R, Wang-Gohrke S, Gehrig A, Markiefka B, Buecher B, Lefol C, Stoppa-Lyonnet D, Rouleau E, Prieur F, Damiola F, GEMO Study Collaborators, Barjhoux L, Faivre L, Longy M, Sevenet N, Sinilnikova OM, Mazoyer S, Bonadona V, Caux-Moncoutier V, Isaacs C, Van Maerken T, Claes K, Piedmonte M, Andrews L, Hays J, Rodriguez GC, Caldés T, La Hoya de M, Khan S, Hogervorst FBL, Aalfs CM, De Lange JL, Meijers-Heijboer HEJ, Van der Hout AH, Wijnen JT, Van Roozendaal KEP, Mensenkamp AR, Van den Ouweland AMW, Van Deurzen CHM, Van der Luijt RB, HEBON, Olah E, Díez O, Lazaro C, Blanco I, Teulé A, Menéndez M, Jakubowska A, Lubinski J, Cybulski C, Gronwald J, Jaworska-Bieniek K, Durda K, Arason A, Maugard C, Soucy P, Montagna M, Agata S, Teixeira MR, Olswold C, Lindor N, Pankratz VS, Hallberg E, Wang X, Szabo CI, Vijai J, Jacobs L, Corines M, Lincoln A, Berger A, Fink-Retter A, Singer CF, Rappaport C, Kaulich DG, Pfeiler G, Tea M-K, Phelan CM, Mai PL, Greene MH, Rennert G, Imyanitov EN, Glendon G, Toland AE, Bojesen A, Pedersen IS, Jensen UB, Caligo MA, Friedman E, Berger R, Laitman Y, Rantala J, Arver B, Loman N, Borg A, Ehrencrona H, Olopade OI, Simard J, Easton DF, Chenevix-Trench G, Offit K, Couch FJ, Antoniou AC, CIMBA. 2014. Associations of common breast cancer susceptibility alleles with risk of breast cancer subtypes in *BRCA1* and *BRCA2* mutation carriers. *Breast Cancer Research* 16:3416–3442 DOI [10.1186/s13058-014-0492-9](https://doi.org/10.1186/s13058-014-0492-9).

La Hoya de M, Gutiérrez-Enríquez S, Velasco E, Osorio A, Sánchez de Abajo A, Vega A, Salazar R, Esteban E, Llorca G, González-Sarmiento R, Á Carracedo, Benítez J, Miner C, Díez O, Díaz-Rubio E, Caldés T. 2006. Genomic rearrangements at the *BRCA1* locus in Spanish families with breast/ovarian cancer. *Clinical Chemistry* 52:1480–1485 DOI [10.1373/clinchem.2006.070110](https://doi.org/10.1373/clinchem.2006.070110).

- Mazoyer S. 2005.** Genomic rearrangements in the *BRCA1* and *BRCA2* genes. *Human Mutation* 25:415–422 DOI 10.1002/humu.20169.
- Moisan A-M, Fortin J, Dumont M, Samson C, Bessette P, Chiquette J, Laframboise R, Lépine J, Lespérance B, Pichette R, Plante M, Provencher L, Voyer P, Goldgar D, Bridge P, Simard J. 2006.** No evidence of *BRCA1/2* genomic rearrangements in high-risk French-Canadian breast/ovarian cancer families. *Genetic Testing* 10:104–115 DOI 10.1089/gte.2006.10.104.
- Montagna M, Dalla Palma M, Menin C, Agata S, De Nicolo A, Chieco-Bianchi L, D'Andrea E. 2003.** Genomic rearrangements account for more than one-third of the *BRCA1* mutations in northern Italian breast/ovarian cancer families. *Human Molecular Genetics* 12:1055–1061 DOI 10.1093/hmg/ddg120.
- Nicolussi A, Belardinilli F, Mahdavian Y, Colicchia V, D'Inzeo S, Petroni M, Zani M, Ferraro S, Valentini V, Ottini L, Giannini G, Capalbo C, Coppa A. 2019.** Next-generation sequencing of *BRCA1* and *BRCA2* genes for rapid detection of germline mutations in hereditary breast/ovarian cancer. *PeerJ* 7:e6661 DOI 10.7717/peerj.6661.
- Ottini L, Silvestri V, Saieva C, Rizzolo P, Zanna I, Falchetti M, Masala G, Navazio AS, Graziano V, Bianchi S, Manoukian S, Barile M, Peterlongo P, D'Amico C, Varesco L, Tommasi S, Russo A, Giannini G, Cortesi L, Viel A, Montagna M, Radice P, Palli D. 2013.** Association of low-penetrance alleles with male breast cancer risk and clinicopathological characteristics: results from a multicenter study in Italy. *Breast Cancer Research and Treatment* 138:861–868 DOI 10.1007/s10549-013-2459-4.
- Palma M, Ristori E, Ricevuto E, Giannini G, Gulino A. 2006.** *BRCA1* and *BRCA2*: the genetic testing and the current management options for mutation carriers. *Critical Reviews in Oncology/Hematology* 57:1–23 DOI 10.1016/j.critrevonc.2005.05.003.
- Peterlongo P, Chang-Claude J, Moysich KB, Rudolph A, Schmutzler RK, Simard J, Soucy P, Eeles RA, Easton DF, Hamann U, Wilkening S, Chen B, Rookus MA, Schmidt MK, Van der Baan FH, Spurdle AB, Walker LC, Lose F, Maia A-T, Montagna M, Matricardi L, Lubinski J, Jakubowska A, Gómez Garcia EB, Olopade OI, Nussbaum RL, Nathanson KL, Domchek SM, Rebbeck TR, Arun BK, Karlan BY, Orsulic S, Lester J, Chung WK, Miron A, Southey MC, Goldgar DE, Buys SS, Janavicius R, Dorfling CM, Van Rensburg EJ, Ding YC, Neuhausen SL, Hansen TVO, Gerdes A-M, Ejlersen B, Jønson L, Osorio A, Martínez-Bouzas C, Benítez J, Conway EE, Blazer KR, Weitzel JN, Manoukian S, Peissel B, Zaffaroni D, Scuvera G, Barile M, Ficarazzi F, Mariette F, Fortuzzi S, Viel A, Giannini G, Papi L, Martayan A, Tibiletti MG, Radice P, Vratimos A, Fostira F, Garber JE, Donaldson A, Brewer C, Foo C, Evans DGR, Frost D, Eccles D, Brady A, Cook J, Tischkowitz M, Adlard J, Barwell J, Walker L, Izatt L, Side LE, Kennedy MJ, Rogers MT, Porteous ME, Morrison PJ, Platte R, Davidson R, Hodgson SV, Ellis S, Cole T, EMBRACE, Godwin AK, Claes K, Van Maerken T, Meindl A, Gehrig A, Sutter C, Engel C, Niederacher D, Steinemann D, Plendl H, Kast K, Rhiem K, Ditsch N, Arnold N, Varon-Mateeva R, Wappenschmidt B, Wang-Gohrke S, Bressac-de Paillerets B, Buecher B, Delnatte C, Houdayer C, Stoppa-Lyonnet**

D, Damiola F, Coupier I, Barjhoux L, Venat-Bouvet L, Golmard L, Boutry-Kryza N, Sinilnikova OM, Caron O, Pujol P, Mazoyer S, Belotti M, GEMO Study Collaborators, Piedmonte M, Friedlander ML, Rodriguez GC, Copeland LJ, La Hoya de M, Segura PP, Nevanlinna H, Aittomaki K, Van Os TAM, Meijers-Heijboer HEJ, Van der Hout AH, Vreeswijk MPG, Hoogerbrugge N, Ausems MGEM, Van Doorn HC, Collée JM, HEBON, Olah E, Díez O, Blanco I, Lazaro C, Brunet J, Feliubadalo L, Cybulski C, Gronwald J, Durda K, Jaworska-Bieniek K, Sukiennicki G, Arason A, Chiquette J, Teixeira MR, kConFab Investigators, Olswold C, Couch FJ, Lindor NM, Wang X, Szabo CI, Offit K, Corines M, Jacobs L, Robson ME, Zhang L, Joseph V, Berger A, Singer CF, Rappaport C, Kaulich DG, Pfeiler G, Tea M-KM, Phelan CM, Greene MH, Mai PL, Rennert G, Mulligan AM, Glendon G, Tchatchou S, Andrulis IL, Toland AE, Bojesen A, Pedersen IS, Thomassen M, Jensen UB, Laitman Y, Rantala J, Wachenfeldt von A, Ehrencrona H, Askmalms MS, Borg A, Kuchenbaecker KB, McGuffog L, Barrowdale D, Healey S, Lee A, Pharoah PDP, Chenevix-Trench G, kConFab Investigators, Antoniou AC. 2015. Candidate genetic modifiers for breast and ovarian cancer risk in *BRCA1* and *BRCA2* mutation carriers. *Cancer Epidemiology, Biomarkers & Prevention* 24:308–316 DOI 10.1158/1055-9965.EPI-14-0532.

Pietschmann A, Mehdipour P, Atri M, Hofmann W, Hosseini-Asl SS, Scherneck S, Mundlos S, Peters H. 2005. Mutation analysis of *BRCA1* and *BRCA2* genes in Iranian high risk breast cancer families. *Journal of Cancer Research and Clinical Oncology* 131:552–558 DOI 10.1007/s00432-005-0678-8.

Pilato B, Pinto R, De Summa S, Petriella D, Lacalamita R, Danza K, Paradiso A, Tommasi S. 2016. *BRCA1-2* diagnostic workflow from next-generation sequencing technologies to variant identification and final report. *Genes, Chromosomes & Cancer* 55:803–813 DOI 10.1002/gcc.22383.

Rebbeck TR, Friebel TM, Friedman E, Hamann U, Huo D, Kwong A, Olah E, Olopade OI, Solano AR, Teo SH, Thomassen M, Weitzel JN, Chan TL, Couch FJ, Goldgar DE, Kruse TA, Palmero EI, Park SK, Torres D, Van Rensburg EJ, McGuffog L, Parsons MT, Leslie G, Aalfs CM, Abugattas J, Adlard J, Agata S, Aittomaki K, Andrews L, Andrulis IL, Arason A, Arnold N, Arun BK, Asseryanis E, Auerbach L, Azzollini J, Balmaña J, Barile M, Barkardottir RB, Barrowdale D, Benítez J, Berger A, Berger R, Blanco AM, Blazer KR, Blok MJ, Bonadona V, Bonanni B, Bradbury AR, Brewer C, Buecher B, Buys SS, Caldés T, Caliebe A, Caligo MA, Campbell I, Caputo SM, Chiquette J, Chung WK, Claes KBM, Collée JM, Cook J, Davidson R, La Hoya de M, De Leeneer K, De Pauw A, Delnatte C, Díez O, Ding YC, Ditsch N, Domchek SM, Dorfling CM, Velazquez C, Dworniczak B, Eason J, Easton DF, Eeles R, Ehrencrona H, Ejlersen B, EMBRACE, Engel C, Engert S, Evans DG, Faivre L, Feliubadalo L, Ferrer SF, Foretova L, Fowler J, Frost D, Galvão HCR, Ganz PA, Garber J, Gauthier-Villars M, Gehrige A, GEMO Study Collaborators, Gerdes A-M, Gesta P, Giannini G, Giraud S, Glendon G, Godwin AK, Greene MH, Gronwald J, Gutierrez-Barrera A, Hahnen E, Hauke J, HEBON, Henderson A, Hentschel J, Hogervorst FBL, Honisch E, Imyanitov EN, Isaacs C, Izatt L, Izquierdo A,

- Jakubowska A, James P, Janavicius R, Jensen UB, John EM, Vijai J, Kaczmarek K, Karlan BY, Kast K, Investigators K, Kim S-W, Konstantopoulou I, Korach J, Laitman Y, Lasa A, Lasset C, Lazaro C, Lee A, Lee MH, Lester J, Lesueur F, Liljegren A, Lindor NM, Longy M, Loud JT, Lu KH, Lubinski J, Machackova E, Manoukian S, Mari V, Martínez-Bouzas C, Matrai Z, Mebirouk N, Meijers-Heijboer HEJ, Meindl A, Mensenkamp AR, Mickys U, Miller A, Montagna M, Moysich KB, Mulligan AM, Musinsky J, Neuhausen SL, Nevanlinna H, Ngeow J, Nguyen HP, Niederacher D, Nielsen HR, Nielsen FC, Nussbaum RL, Offit K, Öfverholm A, Ong K-R, Osorio A, Papi L, Papp J, Pasini B, Pedersen IS, Peixoto A, Peruga N, Peterlongo P, Pohl E, Pradhan N, Prajzendanc K, Prieur F, Pujol P, Radice P, Ramus SJ, Rantala J, Rashid MU, Rhiem K, Robson M, Rodriguez GC, Rogers MT, Rudaitis V, Schmidt AY, Schmutzler RK, Senter L, Shah PD, Sharma P, Side LE, Simard J, Singer CF, Skytte A-B, Slavin TP, Snape K, Sobol H, Southey M, Steele L. 2018. Mutational spectrum in a worldwide study of 29,700 families with *BRCA1* or *BRCA2* mutations. *Human Mutation* 39:593–620 DOI 10.1002/humu.23406.
- Rebbeck TR, Mitra N, Wan F, Sinilnikova OM, Healey S, McGuffog L, Mazoyer S, Chenevix-Trench G, Easton DF, Antoniou AC, Nathanson KL, CIMBA Consortium. 2015. Association of type and location of *BRCA1* and *BRCA2* mutations with risk of breast and ovarian cancer. *The Journal of the American Medical Association* 313:1347–1361 DOI 10.1001/jama.2014.5985.
- Ruiz de Garibay G, Gutiérrez-Enríquez S, Garre P, Bonache S, Romero A, Palomo L, Sánchez de Abajo A, Benítez J, Balmaña J, Pérez-Segura P, Díaz-Rubio E, Díez O, Caldés T, Hoya M. 2012. Characterization of four novel *BRCA2* large genomic rearrangements in Spanish breast/ovarian cancer families: review of the literature, and reevaluation of the genetic mechanisms involved in their origin. *Breast Cancer Research and Treatment* DOI 10.1007/s10549-011-1909-0.
- Schenkel LC, Kerkhof J, Stuart A, Reilly J, Eng B, Woodside C, Levstik A, Howlett CJ, Rupar AC, Knoll JHM, Ainsworth P, Wayne JS, Sadikovic B. 2016. Clinical next-generation sequencing pipeline outperforms a combined approach using sanger sequencing and multiplex ligation-dependent probe amplification in targeted gene panel analysis. *The Journal of Molecular Diagnostics* 18:657–667 DOI 10.1016/j.jmoldx.2016.04.002.
- Schmidt AY, Hansen TVO, Ahlborn LB, Jønson L, Yde CW, Nielsen FC. 2017. Next-generation sequencing-based detection of germline copy number variations in *BRCA1/BRCA2*: validation of a one-step diagnostic workflow. *The Journal of Molecular Diagnostics* 19:809–816 DOI 10.1016/j.jmoldx.2017.07.003.
- Schouten JP, McElgunn CJ, Waaijer R, Zwiijnenburg D, Diepvens F, Pals G. 2002. Relative quantification of 40 nucleic acid sequences by multiplex ligation-dependent probe amplification. *Nucleic Acids Research* 30:e57 DOI 10.1093/nar/gnf056.
- Sluiter MD, Van Rensburg EJ. 2011. Large genomic rearrangements of the *BRCA1* and *BRCA2* genes: review of the literature and report of a novel *BRCA1* mutation. *Breast Cancer Research and Treatment* 125:325–349 DOI 10.1007/s10549-010-0817.

- Smith TM, Lee MK, Szabo CI, Jerome N, McEuen M, Taylor M, Hood L, King MC. 1996.** Complete genomic sequence and analysis of 117 kb of human DNA containing the gene *BRCA1*. *Genome Research* **6**:1029–1049 DOI [10.1101/gr.6.11.1029](https://doi.org/10.1101/gr.6.11.1029).
- Tan R, Wang Y, Kleinstein SE, Liu Y, Zhu X, Guo H, Jiang Q, Allen AS, Zhu M. 2014.** An evaluation of copy number variation detection tools from whole-exome sequencing data. *Human Mutation* **35**:899–907 DOI [10.1002/humu.22537](https://doi.org/10.1002/humu.22537).
- Tarabeux J, Zeitouni B, Moncoutier V, Tenreiro H, Abidallah K, Lair S, Legoix-Né P, Leroy Q, Rouleau E, Golmard L, Barillot E, Stern M-H, Rio-Frio T, Stoppa-Lyonnet D, Houdayer C. 2014.** Streamlined ion torrent PGM-based diagnostics: *BRCA1* and *BRCA2* genes as a model. *European Journal of Human Genetics* **22**:535–541 DOI [10.1038/ejhg.2013.181](https://doi.org/10.1038/ejhg.2013.181).
- Ticha I, Kleibl Z, Stribrna J, Kotlas J, Zimovjanova M, Mateju M, Zikan M, Pohlreich P. 2010.** Screening for genomic rearrangements in *BRCA1* and *BRCA2* genes in Czech high-risk breast/ovarian cancer patients: high proportion of population specific alterations in *BRCA1* gene. *Breast Cancer Research and Treatment* **124**:337–347.
- Trujillano D, Weiss MER, Schneider J, Köster J, Papachristos EB, Saviouk V, Zakharkina T, Nahavandi N, Kovacevic L, Rolfs A. 2015.** Next-generation sequencing of the *BRCA1* and *BRCA2* genes for the genetic diagnostics of hereditary breast and/or ovarian cancer. *The Journal of Molecular Diagnostics* **17**:162–170 DOI [10.1016/j.jmoldx.2014.11.004](https://doi.org/10.1016/j.jmoldx.2014.11.004).
- Vasickova P, Machackova E, Lukesova M, Damborsky J, Horky O, Pavlu H, Kuklova J, Kosinova V, Navratilova M, Foretova L. 2007.** High occurrence of *BRCA1* intragenic rearrangements in hereditary breast and ovarian cancer syndrome in the Czech Republic. *BMC Medical Genetics* **8**:32 DOI [10.1186/1471-2350-8-32](https://doi.org/10.1186/1471-2350-8-32).
- Wallace AJ. 2016.** New challenges for BRCA testing: a view from the diagnostic laboratory. *European Journal of Human Genetics* **24**(Suppl 1):S10–8 DOI [10.1038/ejhg.2016.94](https://doi.org/10.1038/ejhg.2016.94).
- Wilson EB. 1927.** Probable inference, the law of succession, and statistical inference. *Journal of the American Statistical Association* **22**:209–212 DOI [10.1080/01621459.1927.10502953](https://doi.org/10.1080/01621459.1927.10502953).
- Woodward AM, Davis TA, Silva AGS, Kirk JA, Leary JA, kConFab Investigators. 2005.** Large genomic rearrangements of both *BRCA2* and *BRCA1* are a feature of the inherited breast/ovarian cancer phenotype in selected families. *Journal of Medical Genetics* **42**:1–4 DOI [10.1136/jmg.2004.027961](https://doi.org/10.1136/jmg.2004.027961).
- Xia LC, Bell JM, Wood-Bouwens C, Chen JJ, Zhang NR, Ji HP. 2018.** Identification of large rearrangements in cancer genomes with barcode linked reads. *Nucleic Acids Research* **46**:1–12 DOI [10.1093/nar/gkx1193](https://doi.org/10.1093/nar/gkx1193).